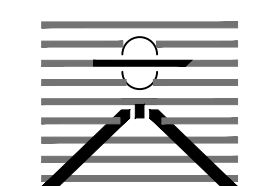


PREPARED BY:

DREXEL, BARRELL & CO.
 Engineers • Surveyors
 3 SOUTH 7TH STREET
 COLORADO SPGS, COLORADO 80905
 CONTACT: TIM D. MCCONNELL, P.E.
 (719) 260-0887
 BOULDER • COLORADO SPRINGS • GREELEY

CLIENT:
 4164 AUSTIN BLUFFS PKWY, #361
 COLORADO SPRINGS, CO 80918
 (719) 200-9594
 CONTACT: JAMES TODD STEVENS

**WINDERMERE
 PRELIMINARY PLAN**
 N. MARKSHEFFEL ROAD
 EL PASO COUNTY, COLORADO

ISSUE	DATE
INITIAL ISSUE	2/21/19
LATEST ISSUE	1/14/21

DESIGNED BY: GES
 DRAWN BY: GES
 CHECKED BY: TDM
 FILE NAME: 21187-01EC1

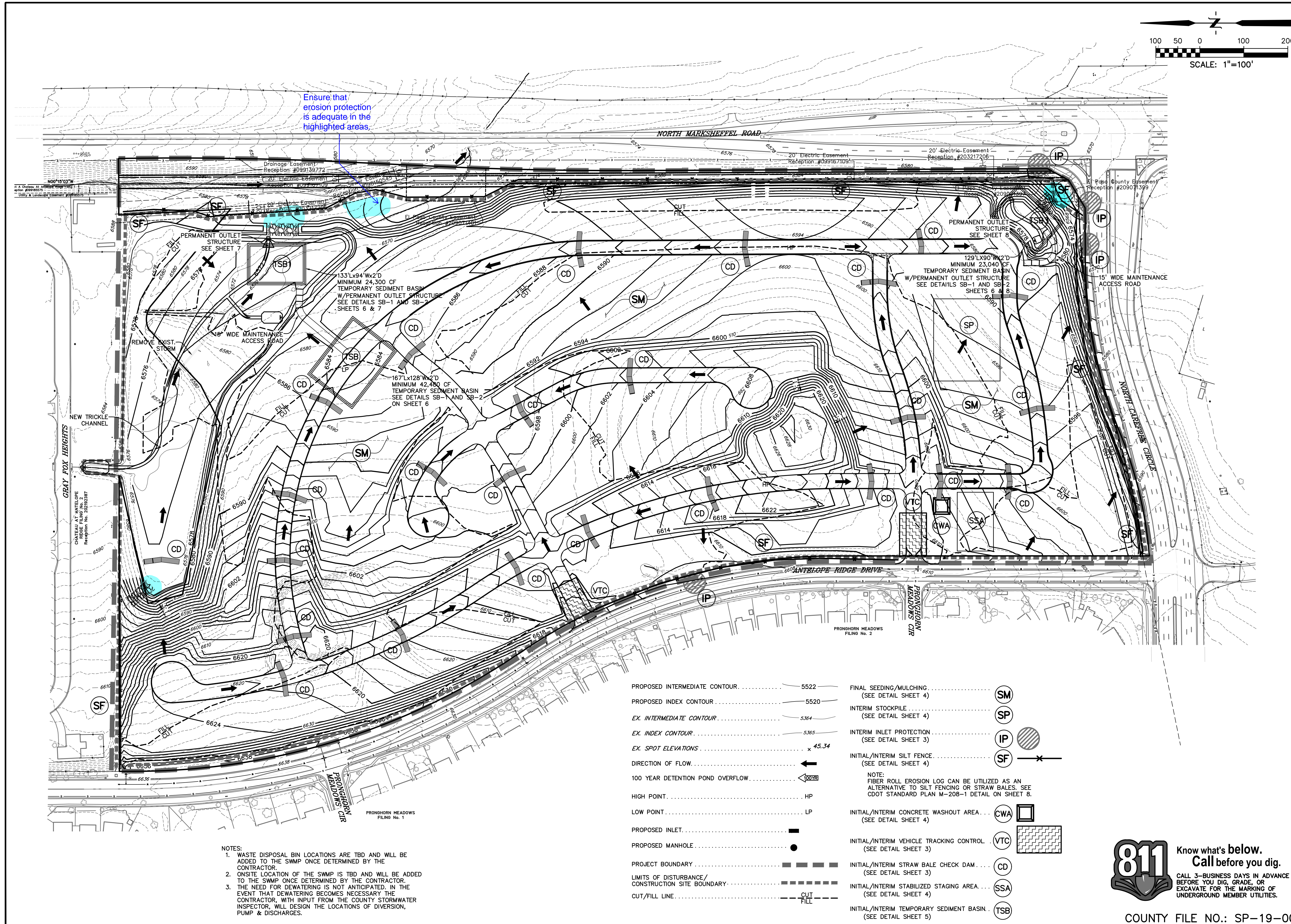
PREPARED UNDER MY DIRECT SUPERVISION FOR AND ON BEHALF OF DREXEL, BARRELL & CO.

DRAWING SCALE:
 HORIZONTAL: 1" = 100'
 VERTICAL: N/A

**INITIAL/INTERIM
 EROSION CONTROL
 PLAN**

PROJECT NO. 21187-01CSCV
 DRAWING NO.

EC03



Ensure that erosion protection is adequate in the highlighted areas.

- | | | | |
|--|---------------------|---|-----|
| PROPOSED INTERMEDIATE CONTOUR | 5522 | FINAL SEEDING/MULCHING | SM |
| PROPOSED INDEX CONTOUR | 5520 | (SEE DETAIL SHEET 4) | |
| EX. INTERMEDIATE CONTOUR | 5364 | INTERIM STOCKPILE | SP |
| EX. INDEX CONTOUR | 5365 | (SEE DETAIL SHEET 4) | |
| EX. SPOT ELEVATIONS | x 45.34 | INTERIM INLET PROTECTION | IP |
| DIRECTION OF FLOW | ← | (SEE DETAIL SHEET 3) | |
| 100 YEAR DETENTION POND OVERFLOW | ← 100YR | INITIAL/INTERIM SILT FENCE | SF |
| HIGH POINT | HP | (SEE DETAIL SHEET 4) | |
| LOW POINT | LP | NOTE:
FIBER ROLL EROSION LOG CAN BE UTILIZED AS AN ALTERNATIVE TO SILT FENCING OR STRAW BALES. SEE CDOT STANDARD PLAN M-208-1 DETAIL ON SHEET 8. | |
| PROPOSED INLET | ■ | INITIAL/INTERIM CONCRETE WASHOUT AREA | CWA |
| PROPOSED MANHOLE | ● | (SEE DETAIL SHEET 4) | |
| PROJECT BOUNDARY | — — — — — | INITIAL/INTERIM VEHICLE TRACKING CONTROL | VTC |
| LIMITS OF DISTURBANCE/
CONSTRUCTION SITE BOUNDARY | — — — — — | (SEE DETAIL SHEET 3) | |
| CUT/FILL LINE | — CUT —
— FILL — | INITIAL/INTERIM STRAW BALE CHECK DAM | CD |
| | | (SEE DETAIL SHEET 3) | |
| | | INITIAL/INTERIM STABILIZED STAGING AREA | SSA |
| | | (SEE DETAIL SHEET 4) | |
| | | INITIAL/INTERIM TEMPORARY SEDIMENT BASIN | TSB |
| | | (SEE DETAIL SHEET 5) | |

- NOTES:
1. WASTE DISPOSAL BIN LOCATIONS ARE TBD AND WILL BE ADDED TO THE SWMP ONCE DETERMINED BY THE CONTRACTOR.
 2. ONSITE LOCATION OF THE SWMP IS TBD AND WILL BE ADDED TO THE SWMP ONCE DETERMINED BY THE CONTRACTOR.
 3. THE NEED FOR DEWATERING IS NOT ANTICIPATED. IN THE EVENT THAT DEWATERING BECOMES NECESSARY THE CONTRACTOR, WITH INPUT FROM THE COUNTY STORMWATER INSPECTOR, WILL DESIGN THE LOCATIONS OF DIVERSION, PUMP & DISCHARGES.

811 Know what's below.
 Call before you dig.
 CALL 3-BUSINESS DAYS IN ADVANCE BEFORE YOU DIG, GRADE, OR EXCAVATE FOR THE MARKING OF UNDERGROUND MEMBER UTILITIES.