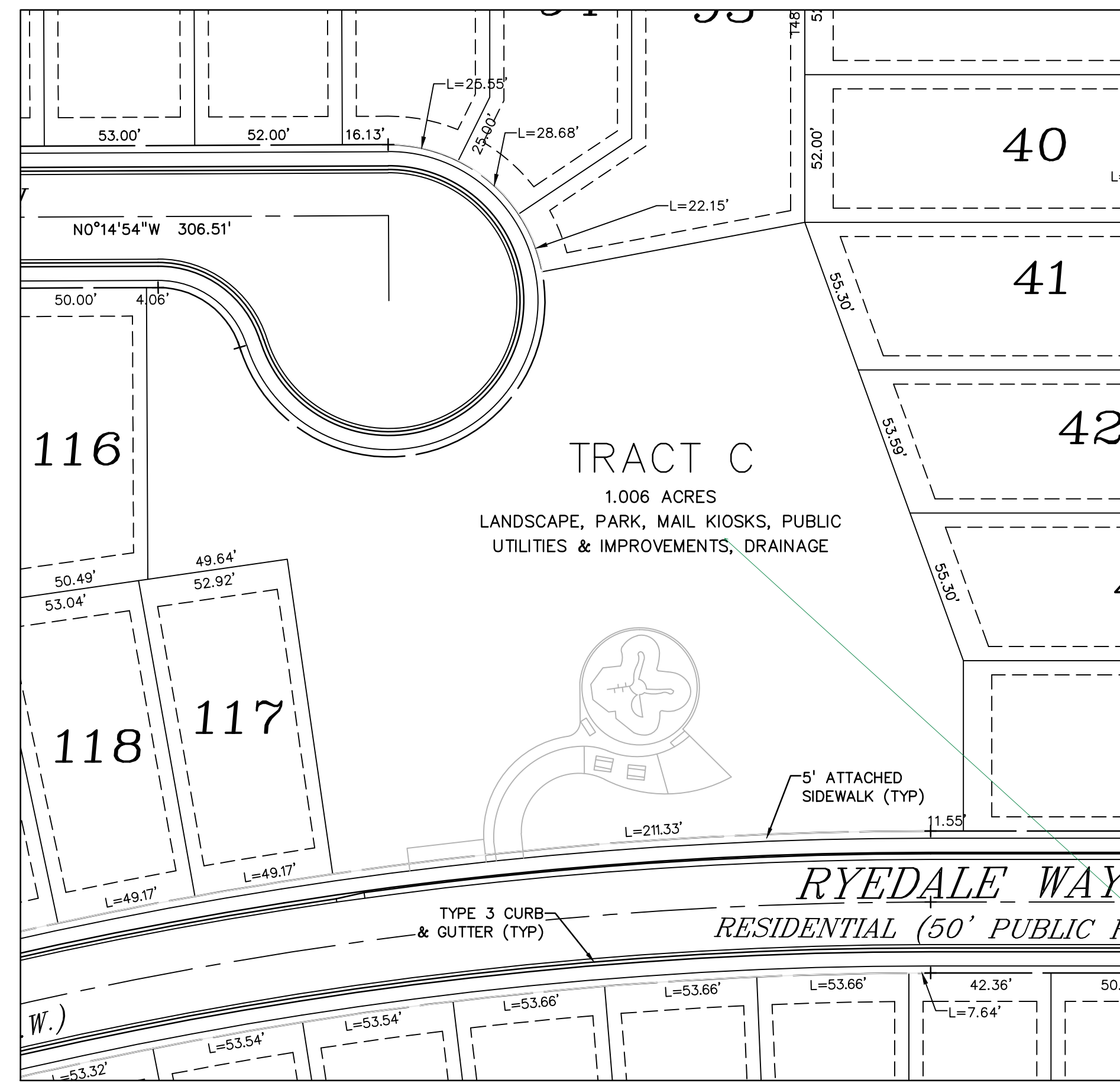
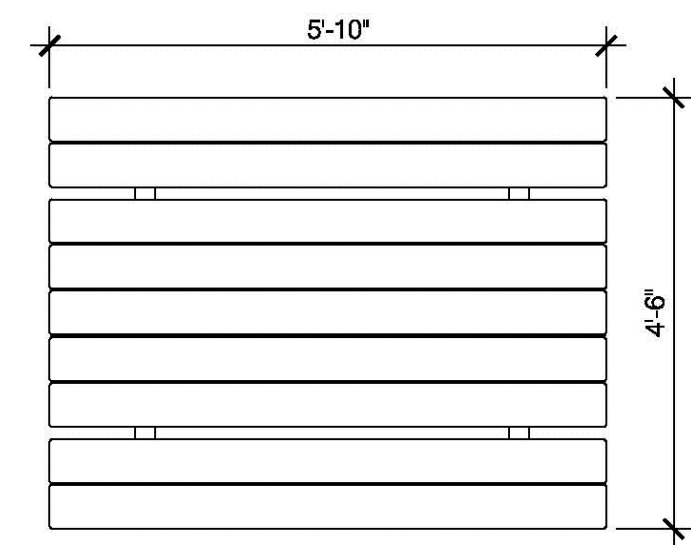


# WINDERMERE PRELIMINARY PLAN

E 1/2 OF SECTION 29, T13S, R65W OF THE 6TH T13M  
EL PASO COUNTY, COLORADO

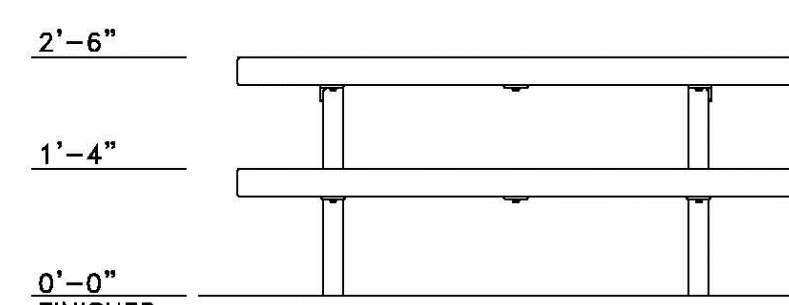


PLAYGROUND SITE PLAN  
1" = 40'

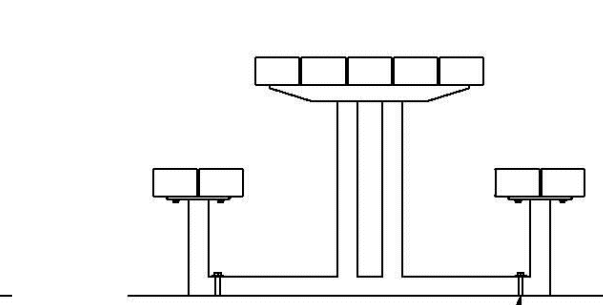


COLUMBIA CASCADE  
TIMBERFORM GREENWAY  
PICNIC TABLE WITH SEATS  
MODEL NO. 2168-6-E  
5'-10" LENGTH

TOP VIEW



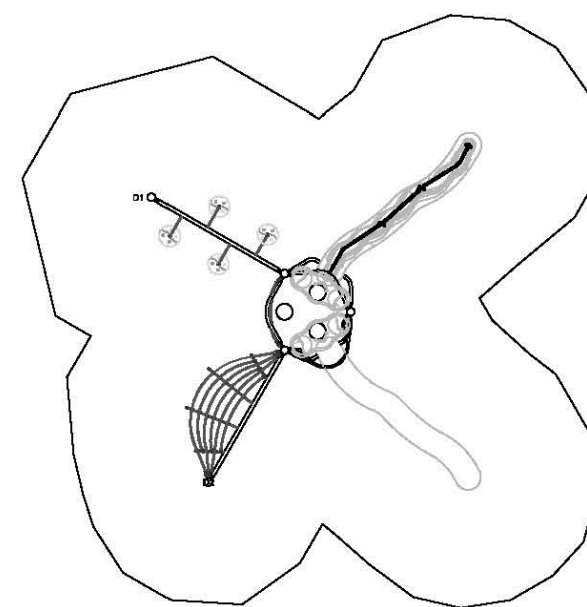
FRONT VIEW



END VIEW

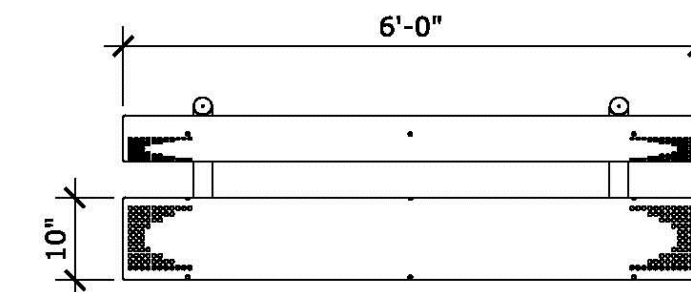
4 PLAYGROUND  
1" = 2'-0"

BURKE PREMIER PLAY ENVIRONMENTS  
MODEL NO. IN-1348



2 PLAYGROUND  
PLAN  
1" = 10'-0"

BURKE PREMIER PLAY ENVIRONMENTS  
6' TRADITIONAL SERIES  
MODEL NO. 580-0172

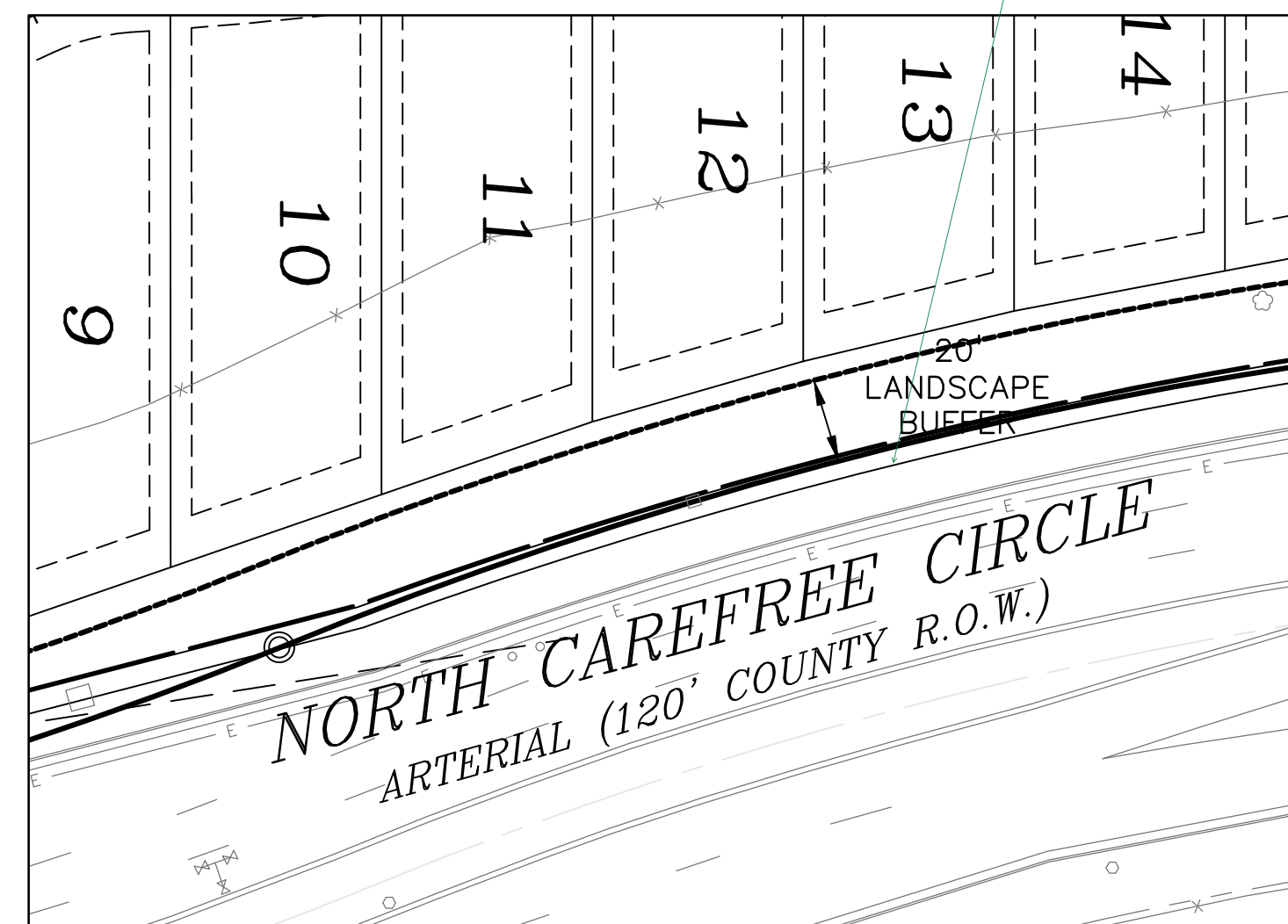


3 BENCH  
PLAN  
1" = 2'-0"

you can always use  
the plant species list  
and detail from  
Falcon Marketplace if  
your at a lost and in  
a hurry with a note  
plant species may  
change with final plat  
and final landscape  
plan.

you will be very tight  
here due to electric  
lines; they wont let  
you place trees there  
so where will you put  
them? Between the  
sound barrier and lot  
line? You will need 6  
feet at least to plan  
B&B 2.5# caliper...  
Show-

add tree symbols and  
species



LANDSCAPE BUFFER  
1" = 40'

**NOTES**

PER EL PASO COUNTY LAND DEVELOPMENT CODE THE FOLLOWING ROADWAY  
LANDSCAPING IS REQUIRED:

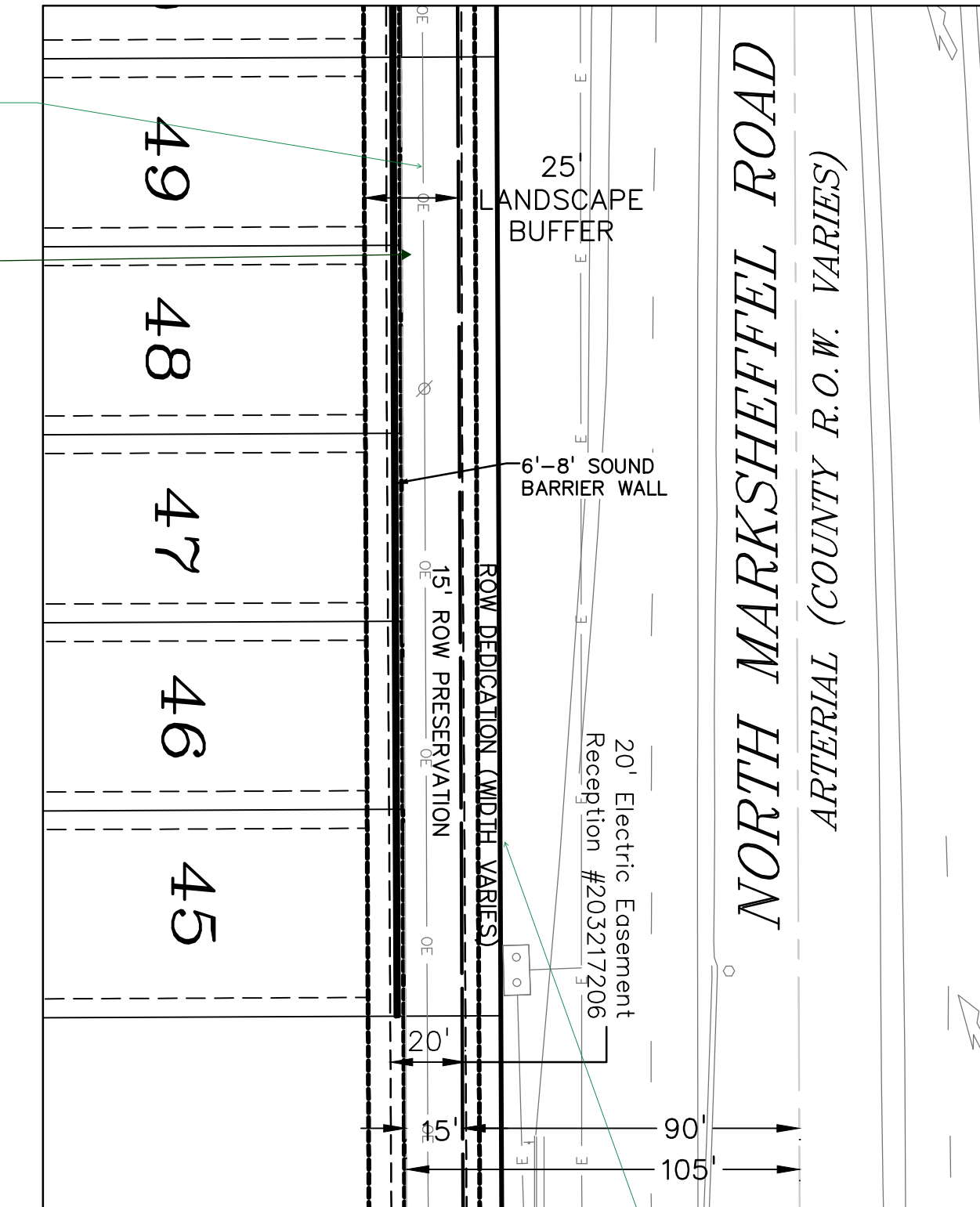
**N. MARKSHEFFEL ROAD (PRINCIPAL ARTERIAL)**  
DEPTH OF ROADWAY BUFFER: 25 FEET  
REQUIRED TREES/LINEAR FOOTAGE OF FRONTAGE: 1 PER 20 FEET

**N. CAREFREE CIRCLE ROAD (MINOR ARTERIAL)**  
DEPTH OF ROADWAY BUFFER: 20 FEET  
REQUIRED TREES/LINEAR FOOTAGE OF FRONTAGE: 1 PER 25 FEET

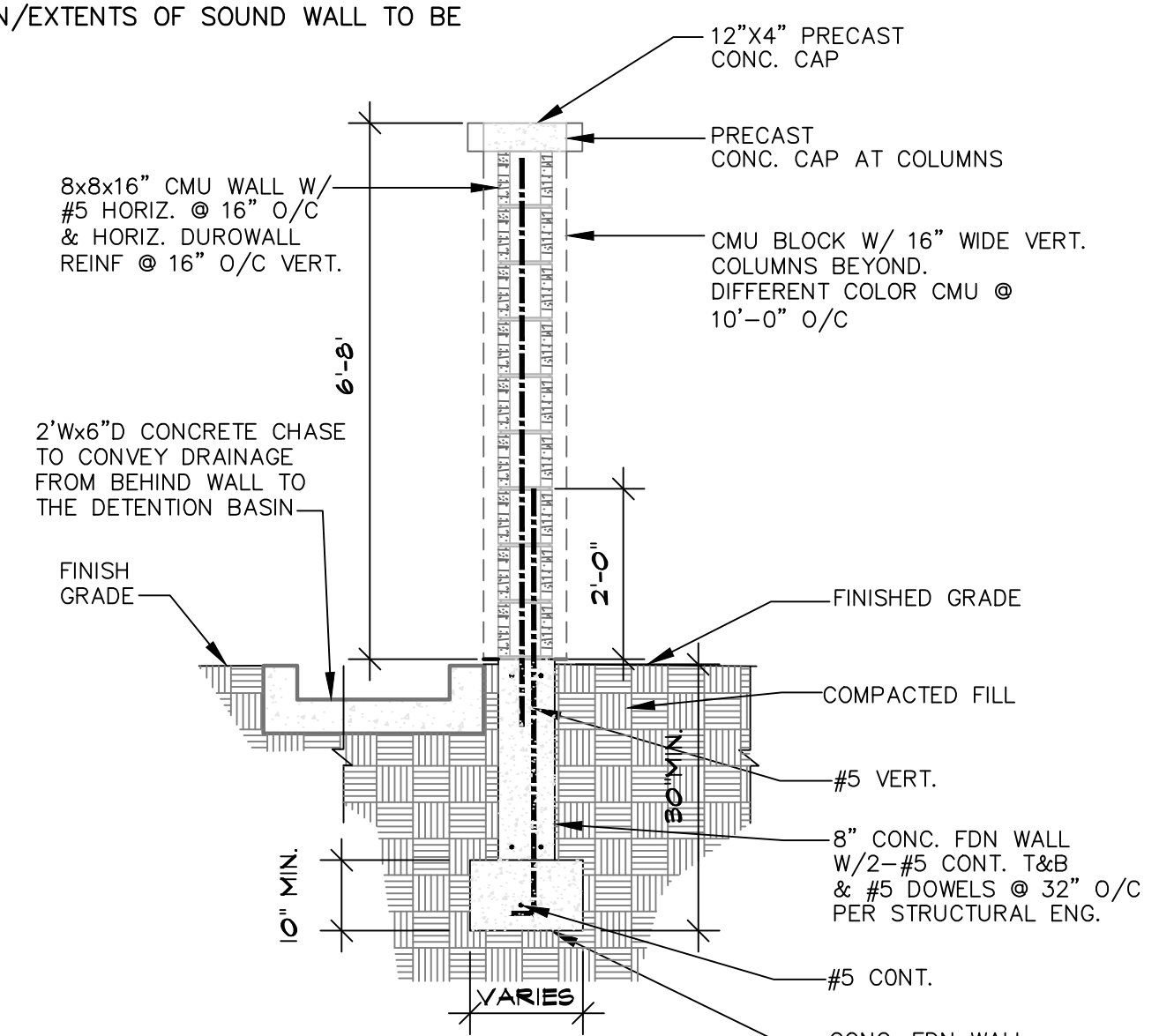
FINAL LANDSCAPING PLAN AND LOCATION/EXTENTS OF SOUND WALL TO BE  
PROVIDED AT FINAL PLAT

provide length of  
each linear footage  
and amount of trees  
required of those the  
evergreen required  
per table in Chapter  
6

any trees here?



enlarge details so we  
can see plants



SOUND BARRIER WALL  
NTS

PREPARED BY:

DREXEL, BARRELL & CO.  
Engineers • Surveyors  
3 SOUTH 7TH STREET  
COLORADO SPGS, COLORADO 80905  
CONTACT: TIM D. McCONNELL, P.E.  
(719)260-0887  
BOULDER • COLORADO SPRINGS • GREELEY

CLIENT:

4164 AUSTIN BLUFFS PKWY, #361  
COLORADO SPRINGS, CO 80918  
(719) 200-9594  
CONTACT: JAMES TODD STEVENS

WINDERMERE  
PRELIMINARY PLAN  
N. MARKSHEFFEL ROAD  
EL PASO COUNTY, COLORADO

ISSUE	DATE
INITIAL ISSUE	2/3/21

DESIGNED BY: SBN  
DRAWN BY: SBN  
CHECKED BY: TDM  
FILE NAME: 21187-01LS1

PREPARED UNDER MY DIRECT  
SUPERVISION FOR AND ON  
BEHALF OF  
DREXEL, BARRELL & CO.

DRAWING SCALE:  
HORIZONTAL: 1" = 40'  
VERTICAL: N/A

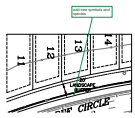
PRELIMINARY  
LANDSCAPE  
EXHIBIT

PROJECT NO. 21187-01CSCV  
DRAWING NO.

**LS01**

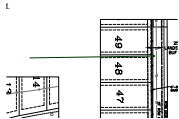
# LS V\_4.pdf Markup Summary 2-3-2021

dsdparsons (7)

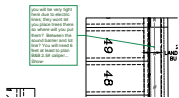


**Subject:** Callout  
**Page Label:** [1] LS1 (2)  
**Author:** dsdparsons  
**Date:** 2/3/2021 12:30:57 PM  
**Status:**  
**Color:** ■  
**Layer:**  
**Space:**

add tree symbols and species

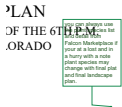


**Subject:** Arrow  
**Page Label:** [1] LS1 (2)  
**Author:** dsdparsons  
**Date:** 2/3/2021 12:31:33 PM  
**Status:**  
**Color:** ■  
**Layer:**  
**Space:**



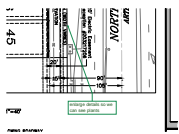
**Subject:** Callout  
**Page Label:** [1] LS1 (2)  
**Author:** dsdparsons  
**Date:** 2/3/2021 12:33:18 PM  
**Status:**  
**Color:** ■  
**Layer:**  
**Space:**

you will be very tight here due to electric lines; they wont let you place trees there so where will you put them? Between the sound barrier and lot line? You will need 6 feet at least to plan B&B 2.5# caliber... Show-



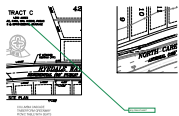
**Subject:** Callout  
**Page Label:** [1] LS1 (2)  
**Author:** dsdparsons  
**Date:** 2/3/2021 12:34:24 PM  
**Status:**  
**Color:** ■  
**Layer:**  
**Space:**

you can always use the plant species list and detail from Falcon Marketplace if your at a lost and in a hurry with a note plant species may change with final plat and final landscape plan.



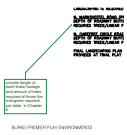
**Subject:** Callout  
**Page Label:** [1] LS1 (2)  
**Author:** dsdparsons  
**Date:** 2/3/2021 12:34:36 PM  
**Status:**  
**Color:** ■  
**Layer:**  
**Space:**

enlarge details so we can see plants



**Subject:** Callout  
**Page Label:** [1] LS1 (2)  
**Author:** dsdparsons  
**Date:** 2/3/2021 12:35:26 PM  
**Status:**  
**Color:** ■  
**Layer:**  
**Space:**

any trees here?



**Subject:** Callout  
**Page Label:** [1] LS1 (2)  
**Author:** dsdparsons  
**Date:** 2/3/2021 12:36:45 PM  
**Status:**  
**Color:** ■  
**Layer:**  
**Space:**

provide length of each linear footage and amount of trees required of those the evergreen required per table in Chapter 6