

OWNER/DEVELOPER STATEMENT
 I, THE OWNER/DEVELOPER HAVE READ AND WILL COMPLY WITH THE REQUIREMENTS OF THE GRADING AND EROSION CONTROL PLAN.

John Helmick 5/15/24
 JOHN HELMICK DATE

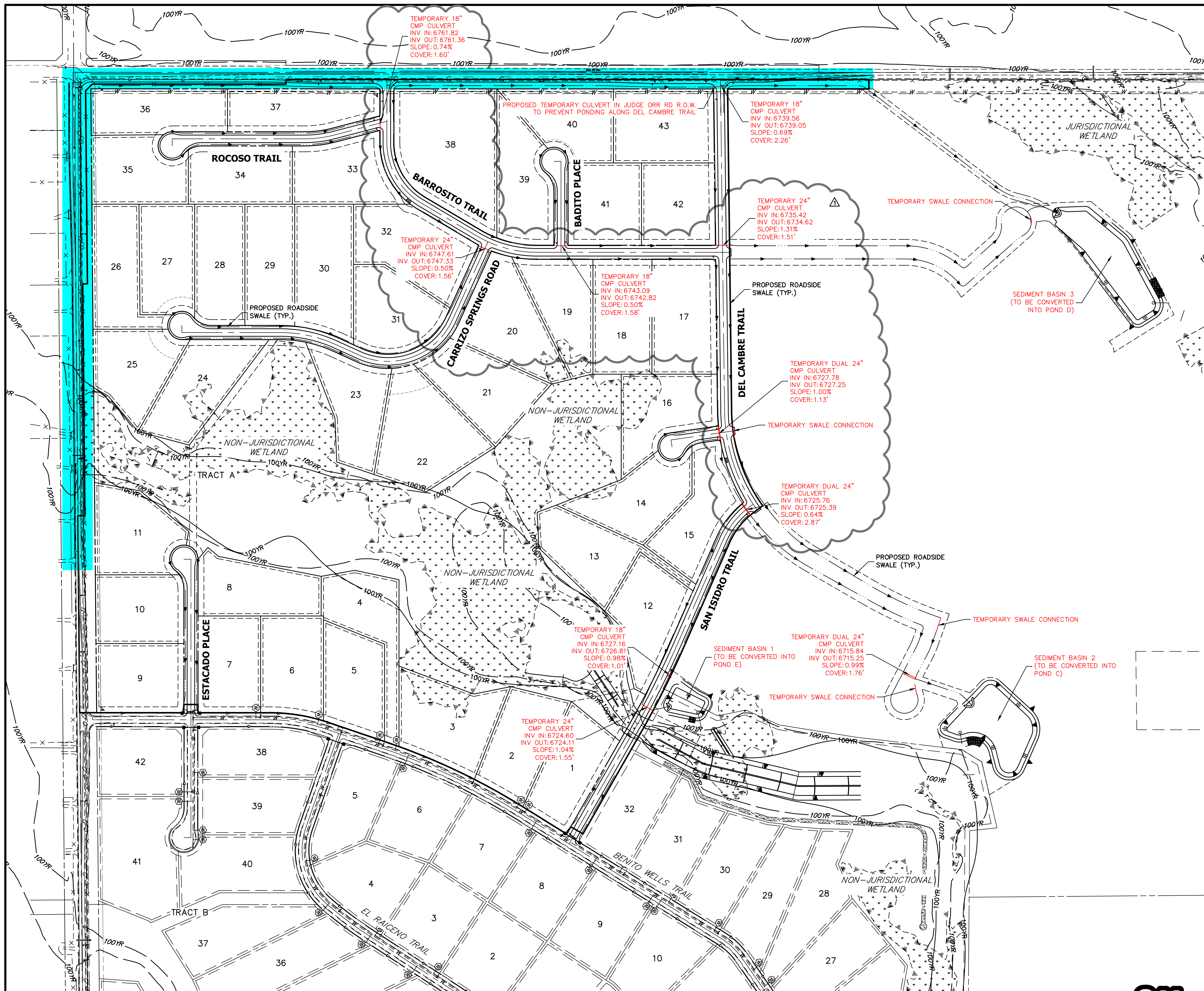
GORILLA CAPITAL CO SADDLEHORN RANCH, LLC
 1342 HIGH STREET
 EUGENE, OR 97401

ENGINEER'S STATEMENT
 THIS GRADING AND EROSION CONTROL PLAN WAS PREPARED UNDER MY DIRECTION AND SUPERVISION AND IS CORRECT TO THE BEST OF MY KNOWLEDGE AND BELIEF. SAID PLAN HAS BEEN PREPARED ACCORDING TO THE CRITERIA ESTABLISHED BY THE COUNTY FOR GRADING AND EROSION CONTROL PLANS. I ACCEPT RESPONSIBILITY FOR ANY LIABILITY CAUSED BY ANY NEGLIGENT ACTS, ERRORS OR OMISSIONS ON MY PART IN PREPARING THIS PLANS.

Bryan T. Law 5/15/24
 BRYAN T. LAW, P.E. DATE
 COLORADO P.E. 25043
 FOR AND ON BEHALF OF JR ENGINEERING, LLC

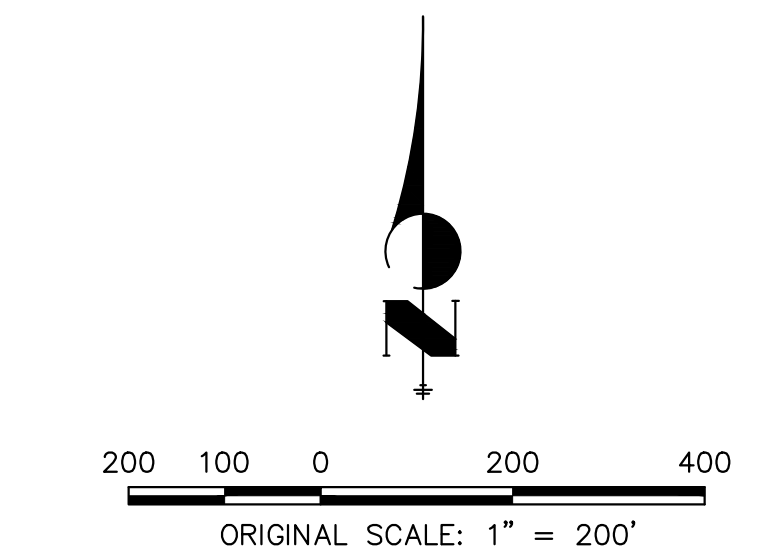


UNTIL SUCH TIME AS THESE DRAWINGS ARE APPROVED BY THE APPROPRIATE REVIEWING AGENCIES, OR ENGINEERING APPROVES THEIR USE, THESE DRAWINGS ARE DESIGNATED BY WRITTEN AUTHORIZATION.			
PREPARED FOR ROI PROPERTY GROUP, LLC 2495 RIGDON STREET NAPA, CALIFORNIA (707) 365-6891 BRADY WILLIAMS -----			
 J.R. ENGINEERING <small>A Westman Company</small> Centennial 303-740-9888 • Colorado Springs 719-588-2583 Fort Collins 970-491-9888 • www.jrengineering.com			
BY	DATE		
No.	REVISION		
H-SCALE	1"=350'	V-SCALE	N/A
DATE	5/15/24	DESIGNED BY	GVT
DRAWN BY	GVT	CHECKED BY	GVT
SADDLEHORN RANCH - FILING 3 OVERALL SITE MAP		SHEET 4 OF 13	JOB NO. 25142.05



LEGEND

- EARLY GRADING TEMPORARY IMPROVEMENTS
- EARLY GRADING EXCLUDED AREAS



OWNER/DEVELOPER STATEMENT

I, THE OWNER/DEVELOPER HAVE READ AND WILL COMPLY WITH THE REQUIREMENTS OF THE GRADING AND EROSION CONTROL PLAN.

John Helmick 2/16/23
 JOHN HELMICK DATE

GORILLA CAPITAL CO SADDLEHORN RANCH, LLC
 1342 HIGH STREET
 EUGENE, OR 97401

ENGINEER'S STATEMENT

THIS GRADING AND EROSION CONTROL PLAN WAS PREPARED UNDER MY DIRECTION AND SUPERVISION AND IS CORRECT TO THE BEST OF MY KNOWLEDGE AND BELIEF. SAID PLAN HAS BEEN PREPARED ACCORDING TO THE CRITERIA ESTABLISHED BY THE COUNTY FOR GRADING AND EROSION CONTROL PLANS. I ACCEPT RESPONSIBILITY FOR ANY LIABILITY CAUSED BY ANY NEGLIGENT ACTS, ERRORS OR OMISSIONS ON MY PART IN PREPARING THIS PLANS.

Bryan T. Law 2/14/23
 BRYAN T. LAW, P.E. DATE
 COLORADO P.E. 25043

FOR AND ON BEHALF OF JR ENGINEERING, LLC



Know what's below.
 Call before you dig.

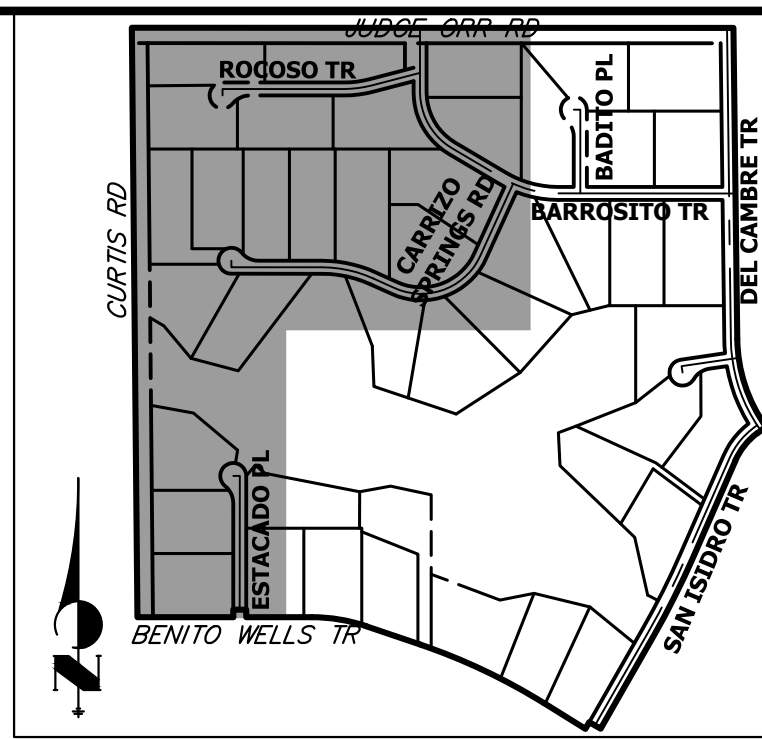
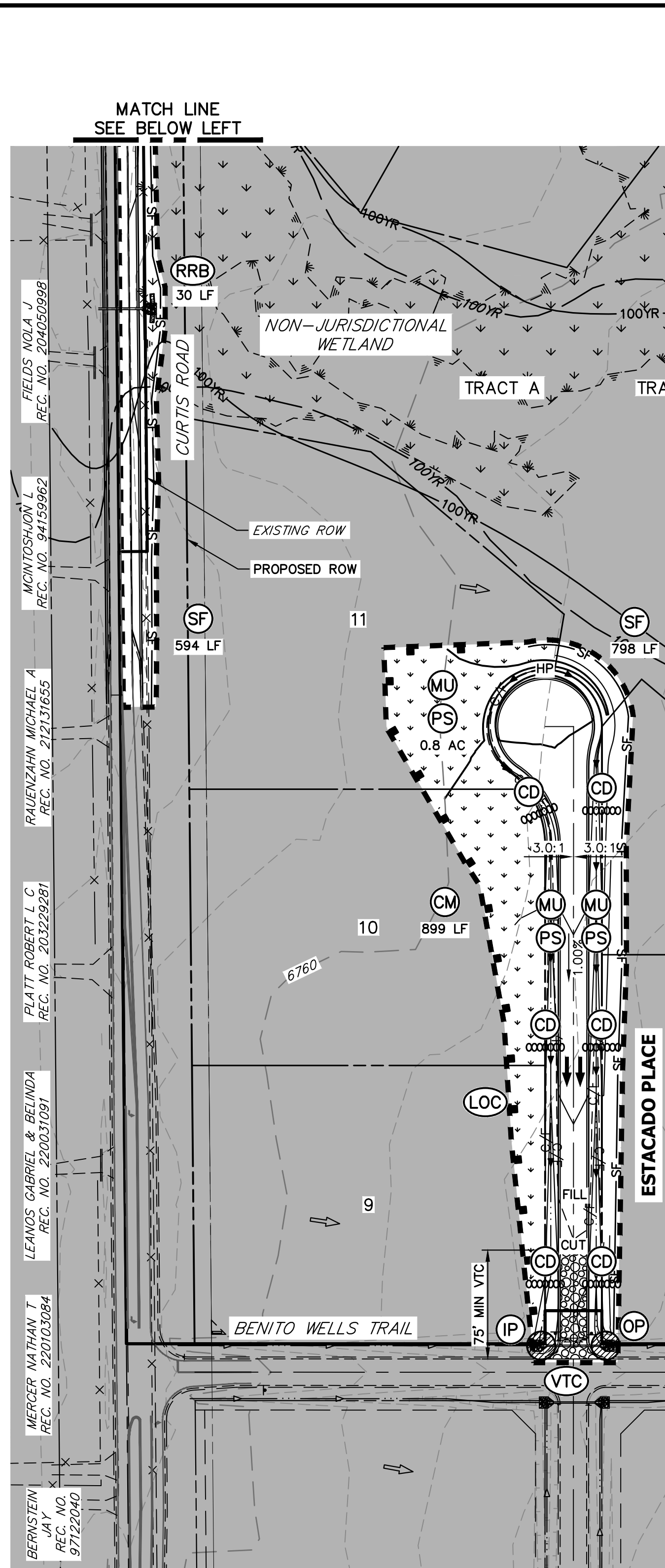
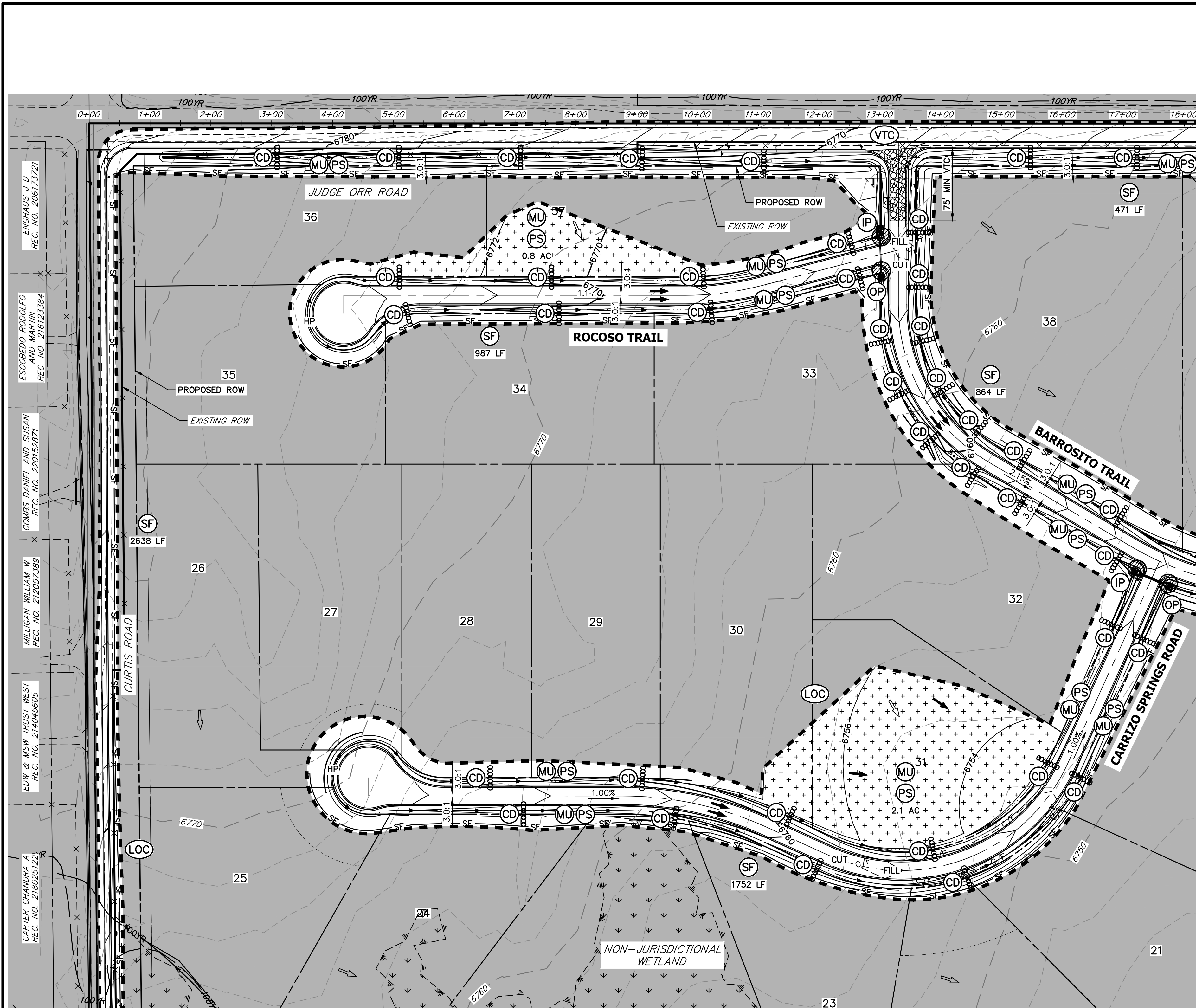
UNTIL SUCH TIME AS THESE DRAWINGS ARE APPROVED BY THE APPROPRIATE REVIEWING AGENCIES, OR ENGINEERING APPROVES THEIR USE, THESE DRAWINGS ARE DESIGNATED BY WRITTEN AUTHORIZATION.

PREPARED FOR
 ROI PROPERTY GROUP, LLC
 2495 RIDGON STREET
 NAPA, CALIFORNIA
 (707) 365-6891
 BRADY WILLIAMS

J.R. ENGINEERING
 A Westman Company
 Centennial 303-740-9888 • Colorado Springs 719-588-2583
 Fort Collins 970-491-9888 • www.jrengineering.com

NO.	REVISION	BY	DATE
1	GRADING CHANGES FROM PROFILE SHIFTS	AM	12/18/23

H-SCALE	1"=200'	DESIGNED BY	SWW
V-SCALE	N/A	DRAWN BY	WKN
DATE	5/15/24	CHECKED BY	
SADDLEHORN RANCH - FILING 3			
EARLY GRADING IMPROVEMENTS			
SHEET 4.1 OF 13			
JOB NO. 25142.05			



LEGEND

SEDIMENT BASIN	SB	TOE	TOE
SILT FENCE	SF	TOP	TOP
STABILIZED STAGING AREA	SSA		
CONSTRUCTION MARKER	CM		
VEHICLE TRACKING CONTROL	VTC		
TEMPORARY STOCK PILE	TSP		
EROSION CONTROL BLANKET	ECB		
TURF REINFORCEMENT MAT	TRM		
INLET PROTECTION	IP		
OUTLET PROTECTION	OP		
DIVERSION DITCH AND DIKE, TEMPORARY	DD		
CUT AND FILL LINE	C/F		
LIMITS OF CONSTRUCTION/DISTURBANCE	LOC		
CONCRETE WASHOUT AREA	CWA		
MULCHING & PERMANENT SEEDING	MU PS		
TEMPORARY SLOPE DRAIN	TSD		
REINFORCED ROCK BERM	RRB		
CHECK DAM	CD		
ROCK SOCK	RS		
EXISTING DRAINAGE ARROW			
PROPOSED DRAINAGE ARROW			

MATCH LINE
SEE ABOVE RIGHT

MATCH LINE
SEE BELOW LEFT

Saddlehorn Filing 3 Earthwork Summary Table

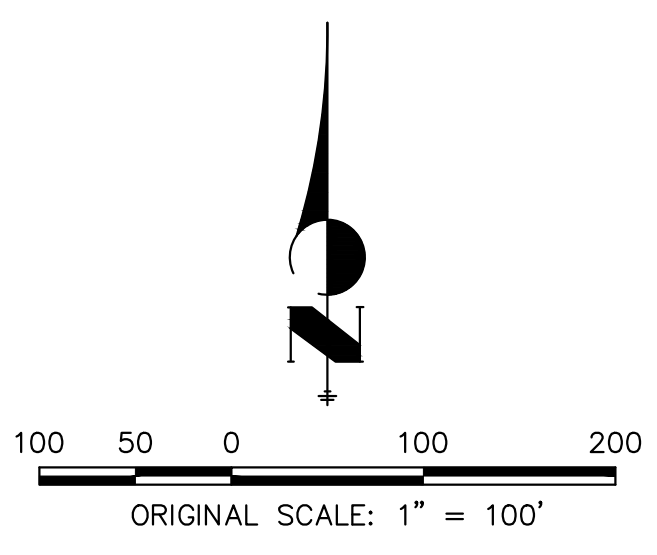
Extraneous Strippings (4") (CY)	8,904
Total Cut (CY)	133,924
Total Fill (CY)	68,382
Excess Cut (CY)	65,542

NOTES

- REFER TO THE STORMWATER MANAGEMENT PLAN (SWMP) FOR A DETAILED DESCRIPTION OF THE MAINTENANCE PROGRAMS FOR EROSION CONTROL FACILITIES.
- SEE SHEET 3 FOR SWALE TYPICAL CROSS SECTIONS THAT INCLUDES SWALE LINING DETAIL.
- ALL DISTURBED AREAS NOT TO BE PAVED SHALL BE PERMANENTLY SEEDED PER THE PAWNEE BUTTES SEED INC - "LOW GROW NATIVE MIX" OR APPROVED EQUAL. SEE SHEET 3 FOR SEED MIX DETAILS. 12.7 TOTAL ACRES OF SEEDING ESTIMATED.
- P.I.E = PUBLIC IMPROVEMENTS EASEMENT
- EXISTING VEGETATION CONSISTS OF NATIVE MEADOW GRASSES (APPROX. 70% COVERAGE) DETERMINED THROUGH A COMBINATION OF FIELD VERIFICATION AND AERIAL INSPECTION.
- NO BATCH PLANTS WILL BE UTILIZED ON SITE.
- DETENTION POND DETAILS ARE PROVIDED IN THE CONSTRUCTION DRAWINGS.
- SILT FENCES THAT ARE NOT PARALLEL TO CONTOURS MUST BE INSTALLED WITH J-HOOK.

BMP PHASING

- INITIAL:**
- INSTALL VTC
 - INSTALL CWA
 - ESTABLISH SSA
 - INSTALL CONSTRUCTION MARKERS
 - INSTALL SILT FENCE
 - INSTALL SEDIMENT BASINS
 - INSTALL DIVERSION DITCHES
- INTERIM:**
- LOCATE/INSTALL TEMPORARY STOCKPILE
 - MAINTAIN ALL BMPs
 - INSTALL RRBs
 - INSTALL INLET AND OUTLET PROTECTION
 - INSTALL EROSION CONTROL BLANKETS
- FINAL:**
- INSTALL MULCH AND PERMANENT SEEDING IN ALL DISTURBED AREAS
 - REMOVE SILT FENCE AFTER STABILIZED, INLET & OUTLET PROTECTION, RRBs, EROSION CONTROL BLANKETS, VTC, CWA, CONSTRUCTION MARKERS, SEDIMENT BASINS, DIVERSION DITCHES, SSA, AND TEMPORARY STOCKPILES



OWNER/DEVELOPER STATEMENT

I, THE OWNER/DEVELOPER HAVE READ AND WILL COMPLY WITH THE REQUIREMENTS OF THE GRADING AND EROSION CONTROL PLAN.

John Helmick 5/15/24
DATE

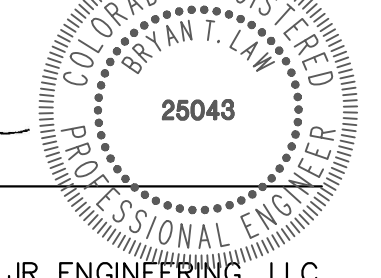
GORILLA CAPITAL CO SADDLEHORN RANCH, LLC
1342 HIGH STREET
EUGENE, OR 97401

ENGINEER'S STATEMENT

THIS GRADING AND EROSION CONTROL PLAN WAS PREPARED UNDER MY DIRECTION AND SUPERVISION AND IS CORRECT TO THE BEST OF MY KNOWLEDGE AND BELIEF. SAID PLAN HAS BEEN PREPARED ACCORDING TO THE CRITERIA ESTABLISHED BY THE COUNTY FOR GRADING AND EROSION CONTROL PLANS. I ACCEPT RESPONSIBILITY FOR ANY LIABILITY CAUSED BY ANY NEGLIGENT ACTS, ERRORS OR OMISSIONS ON MY PART IN PREPARING THIS PLANS.

Bryan T. Law 5/15/24
DATE

BRYAN T. LAW, P.E.
COLORADO P.E. 25043
FOR AND ON BEHALF OF JR ENGINEERING, LLC



UNTIL SUCH TIME AS THESE DRAWINGS ARE APPROVED BY THE AGENCIES, OR ENGINEERING APPROVES THEIR USE, THESE DRAWINGS ARE DESIGNATED BY WRITTEN AUTHORIZATION.

PREPARED FOR
ROI PROPERTY GROUP, LLC
2495 RIGDON STREET
NAPA, CALIFORNIA
(707) 365-6891
BRADY WILLIAMS

J.R. ENGINEERING
A Westman Company
Central 303-740-9888 • Colorado Springs 719-588-2683
Fort Collins 970-491-9888 • www.jrengineering.com

BY	DATE	No.	REVISION

SADDLEHORN RANCH - FILING 3
GRADING & EROSION CONTROL PLANS

SHEET 5 OF 13
JOB NO. 25142.05

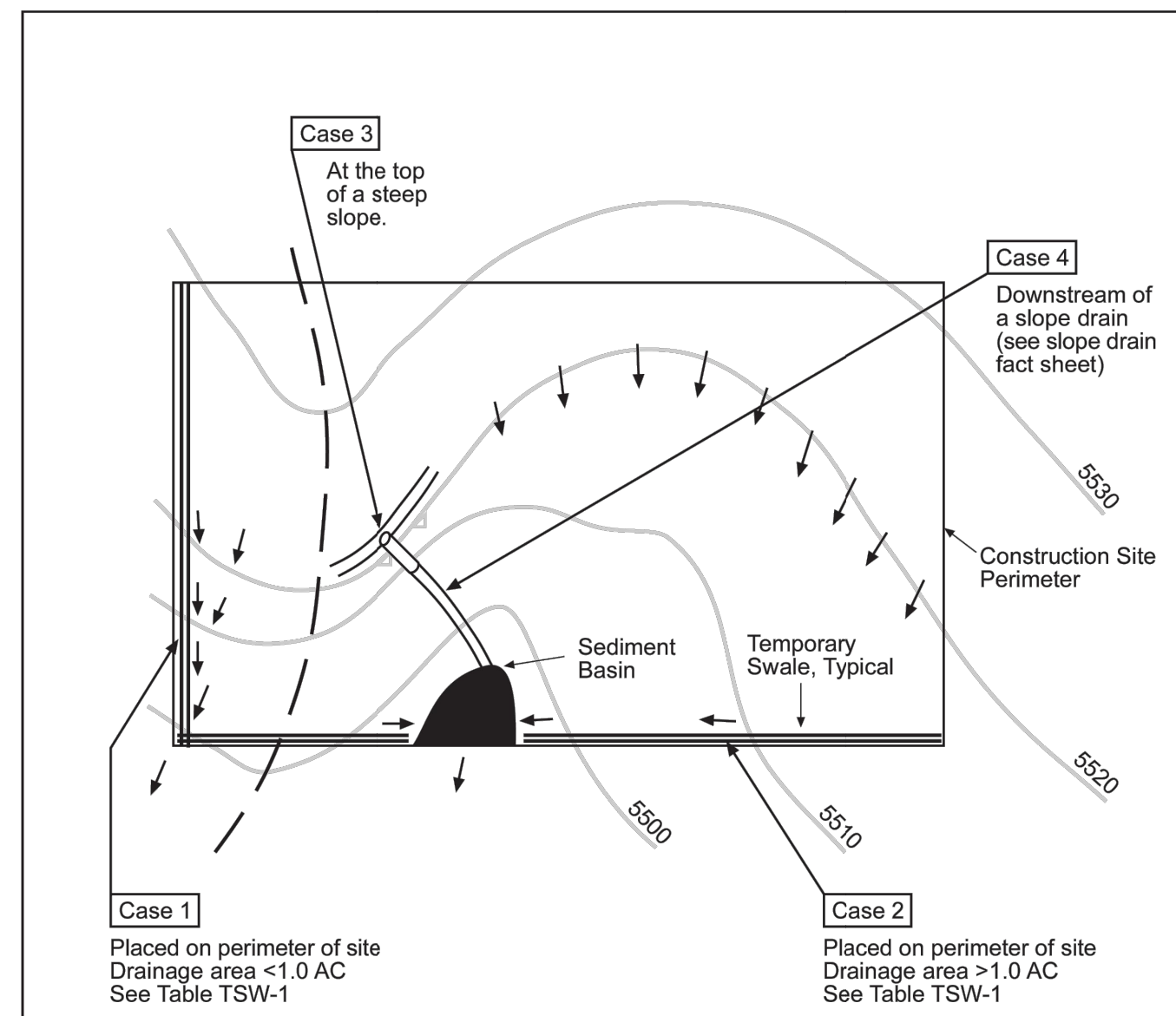


Table TSW-1

Temporary Swale Used as Perimeter Control	Case 1 DA < 1.0 AC	Case 2 DA > 1.0 AC
Continuous Grade	OK ⁽¹⁾	OK ⁽¹⁾
Area of Concentrated Flow	NO ⁽³⁾	NO ⁽²⁾

(1) Silt Fence or Straw Bale Barrier may be used as alternative to a Temporary Swale.
 (2) With Temporary Swales Sediment Basin is required for concentrated flow from drainage areas > 1.0 AC.
 (3) Check Dam is required at concentrated flow for drainage areas > 1.0 acres.

City of Colorado Springs
Storm Water Quality

Figure TSW-1
Temporary Swale
Application Examples

DENM153722.CS.CBfigTSW-19-99

3-49

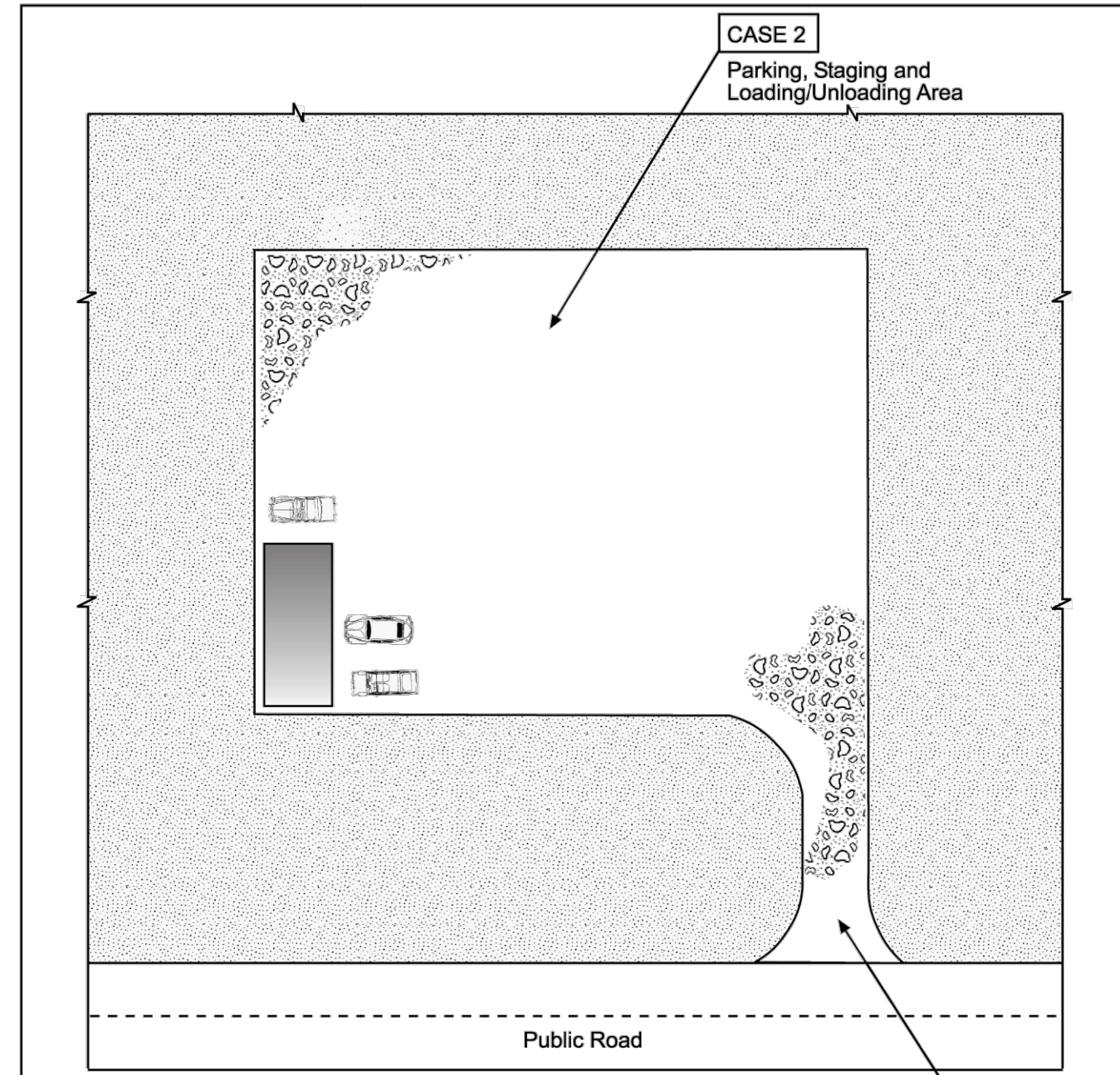


Table VT-1

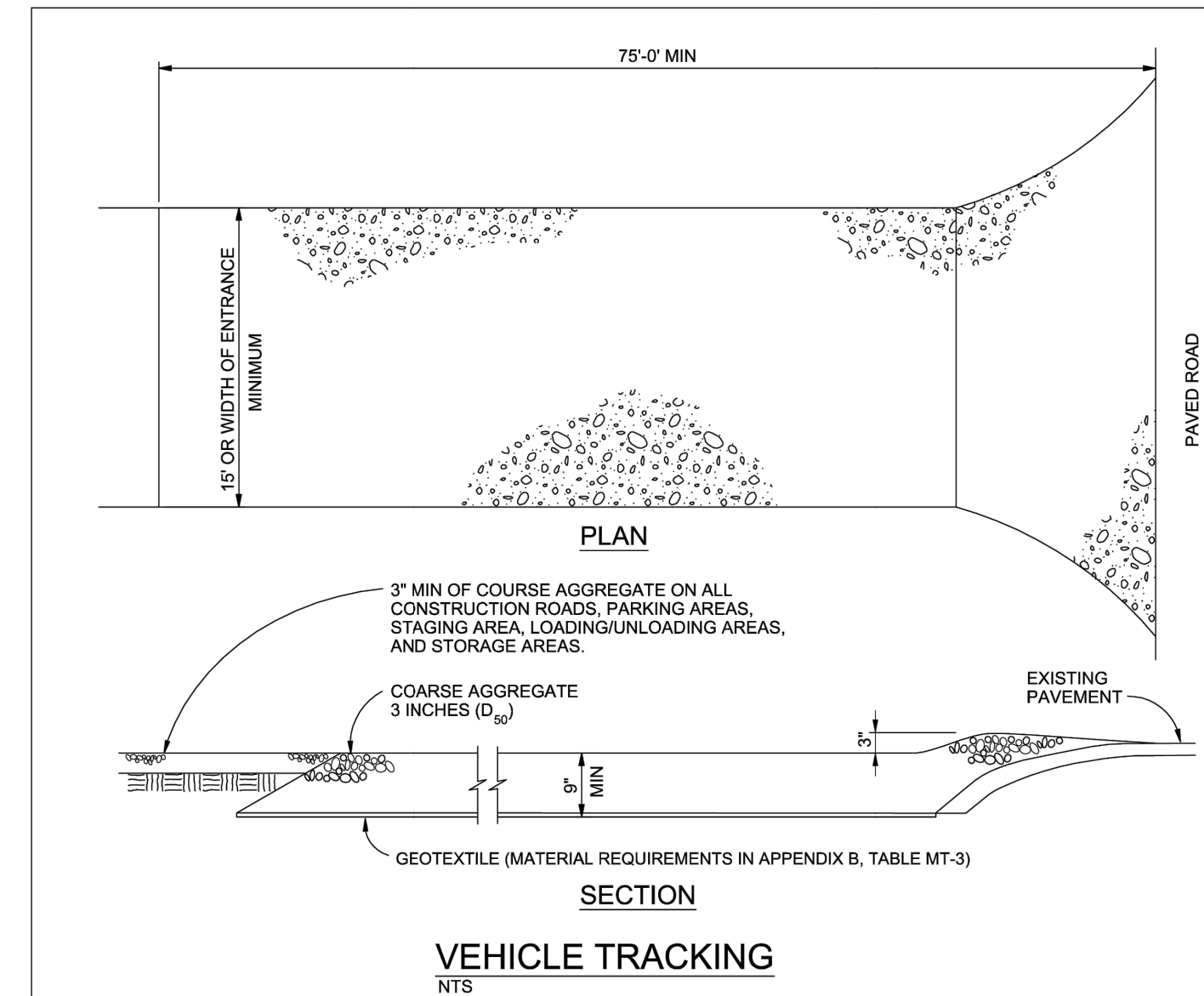
	Case 1	Case 2
Gravel Thickness	9"	3"
Filter Fabric	YES	NO

City of Colorado Springs
Storm Water Quality

Figure VT-1
Vehicle Tracking
Application Examples

DENM153722.CS.CBfigVT-19-99

3-53



VEHICLE TRACKING NOTES

INSTALLATION REQUIREMENTS

- ALL ENTRANCES TO THE CONSTRUCTION SITE ARE TO BE STABILIZED PRIOR TO CONSTRUCTION BEGINNING.
- CONSTRUCTION ENTRANCES ARE TO BE BUILT WITH AN APRON TO ALLOW FOR TURNING TRAFFIC, BUT SHOULD NOT BE BUILT OVER EXISTING PAVEMENT EXCEPT FOR A SLIGHT OVERLAP.
- AREAS TO BE STABILIZED ARE TO BE PROPERLY GRADED AND COMPACTED PRIOR TO LAYING DOWN GEOTEXTILE AND STONE.
- CONSTRUCTION ROADS, PARKING AREAS, LOADING/UNLOADING ZONES, STORAGE AREAS, AND STAGING AREAS ARE TO BE STABILIZED.
- CONSTRUCTION ROADS ARE TO BE BUILT TO CONFORM TO SITE GRADES, BUT SHOULD NOT HAVE SIDE SLOPES OR ROAD GRADES THAT ARE EXCESSIVELY STEEP.

MAINTENANCE REQUIREMENTS

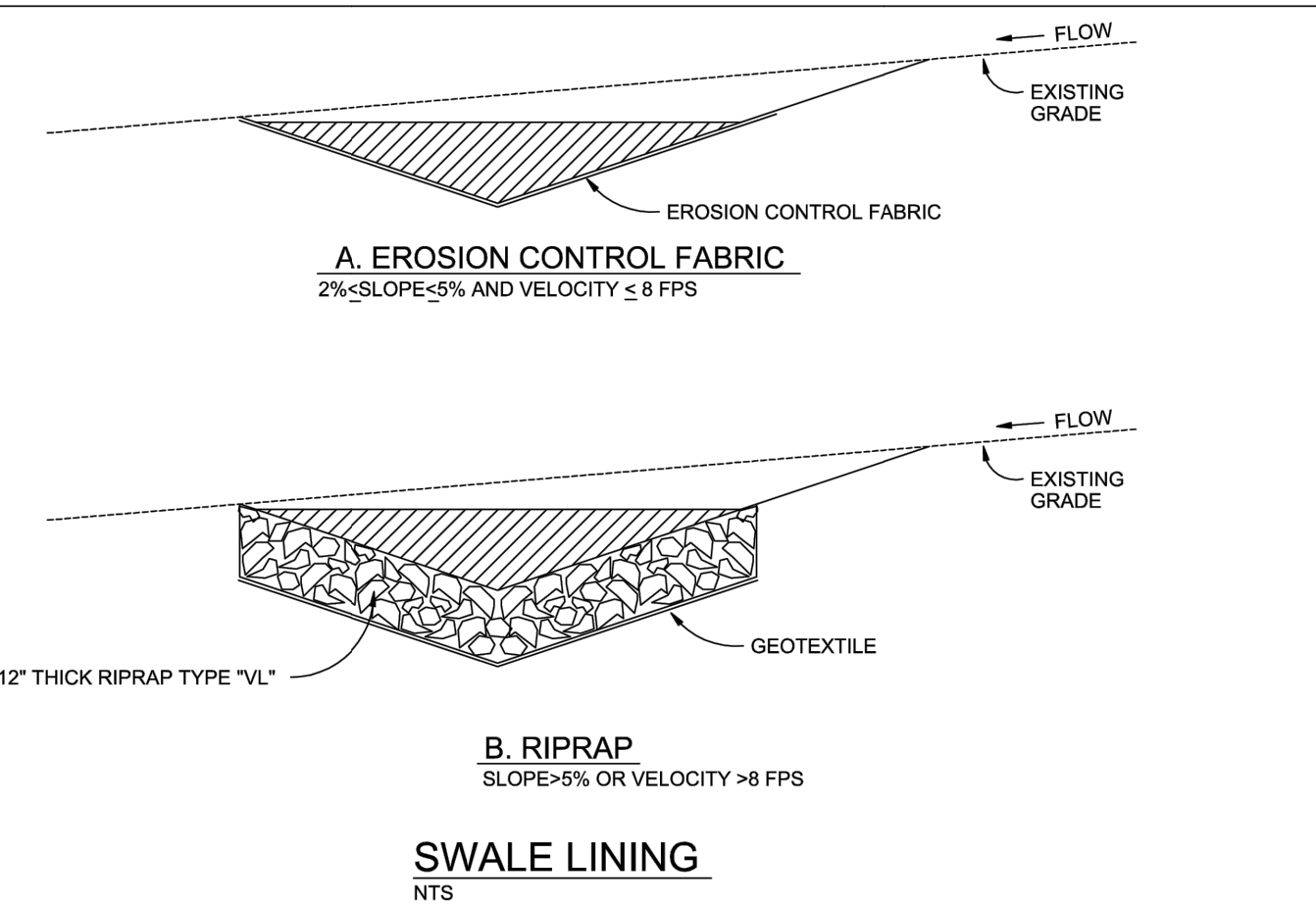
- REGULAR INSPECTIONS ARE TO BE MADE OF ALL STABILIZED AREAS, ESPECIALLY AFTER STORM EVENTS.
- STONES ARE TO BE REAPPLIED PERIODICALLY AND WHEN REPAIR IS NECESSARY.
- SEDIMENT TRACKED ONTO PAVED ROADS IS TO BE REMOVED DAILY BY SHOVELING OR SWEEPING. SEDIMENT IS NOT TO BE WASHED DOWN STORM SEWER DRAINS.
- STORM SEWER INLET PROTECTION IS TO BE IN PLACE, INSPECTED, AND CLEANED IF NECESSARY.
- OTHER ASSOCIATED SEDIMENT CONTROL MEASURES ARE TO BE INSPECTED TO ENSURE GOOD WORKING CONDITION.

City of Colorado Springs
Stormwater Quality

Figure VT-2
Vehicle Tracking
Application Examples

DENM153722.CS.CBfigVT-29-99

3-54



SWALE LINING NOTES

INSTALLATION REQUIREMENTS

- REFER TO THE EROSION CONTROL BLANKETS FACTSHEET FOR PROPER INSTALLATION OF EROSION CONTROL FABRIC LINING.
- SWALES WITH EASILY ERODIBLE SOILS AND SLOPES LESS THAN 2% SHALL BE LINED WITH EROSION CONTROL FABRIC.
- VELOCITIES FOR EROSION CONTROL FABRICS SHALL NOT EXCEED 8 FPS. SWALES WITH VELOCITIES GREATER THAN 8 FPS SHALL BE LINED WITH RIP RAP.

MAINTENANCE REQUIREMENTS

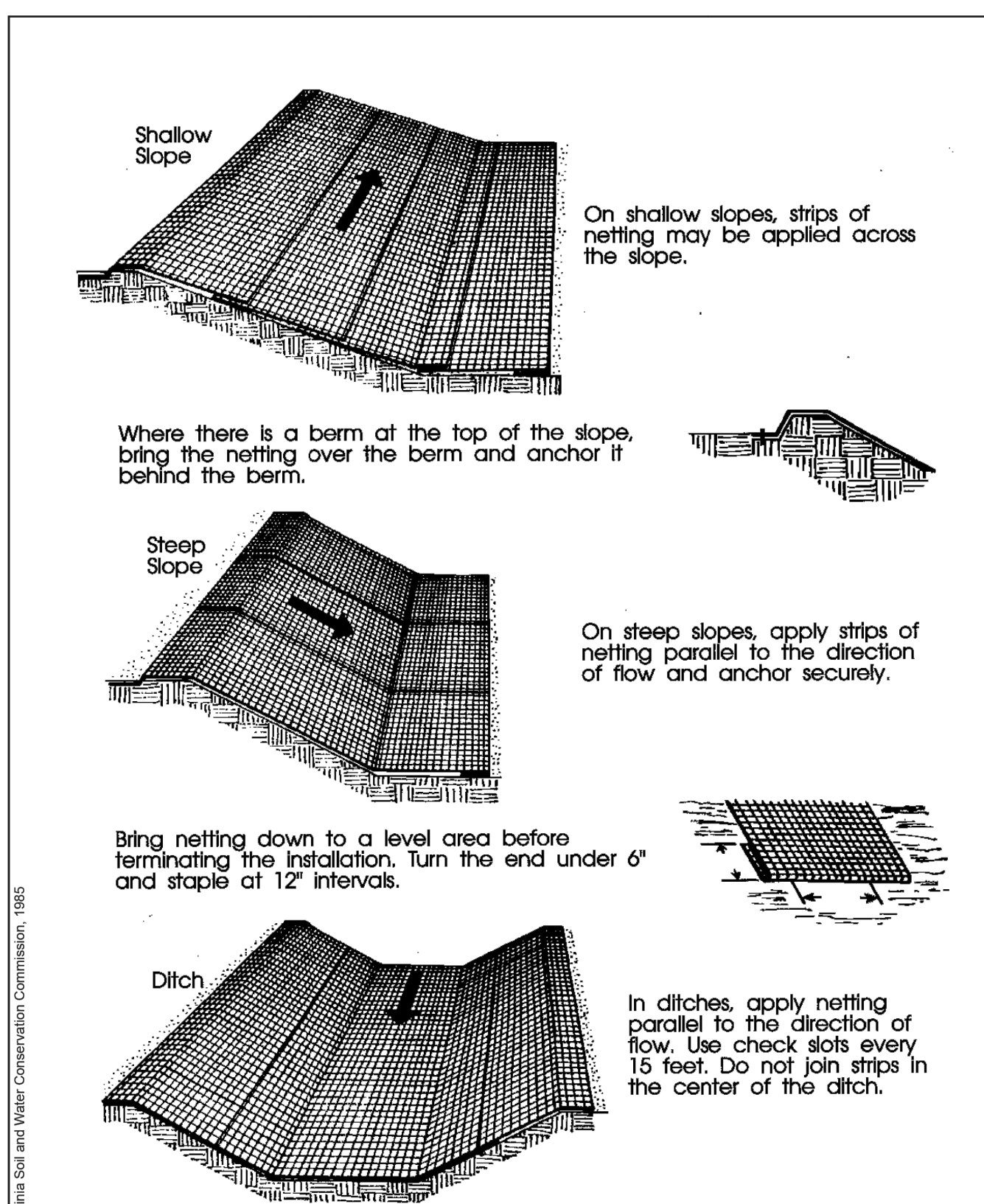
- CONTRACTOR SHALL INSPECT SWALE LININGS AFTER EACH RAINFALL, AT LEAST DAILY DURING PROLONGED RAINFALL AND WEEKLY DURING PERIODS OF NO RAINFALL.
- DAMAGED LININGS SHALL IMMEDIATELY BE REPAIRED.
- REFER TO THE EROSION CONTROL BLANKETS FACTSHEET FOR PROPER MAINTENANCE.
- DISPLACED RIPRAP OR COARSE AGGREGATE IS TO BE REPLACED AS SOON AS POSSIBLE.
- SWALE LININGS ARE TO REMAIN IN PLACE AND BE PROPERLY MAINTAINED UNTIL THE TEMPORARY SWALE IS REMOVED.

City of Colorado Springs
Stormwater Quality

Figure TSW-3
Swale Linings
Construction Detail and Maintenance

DENM153722.CS.CBfigTSW-39-99

3-51

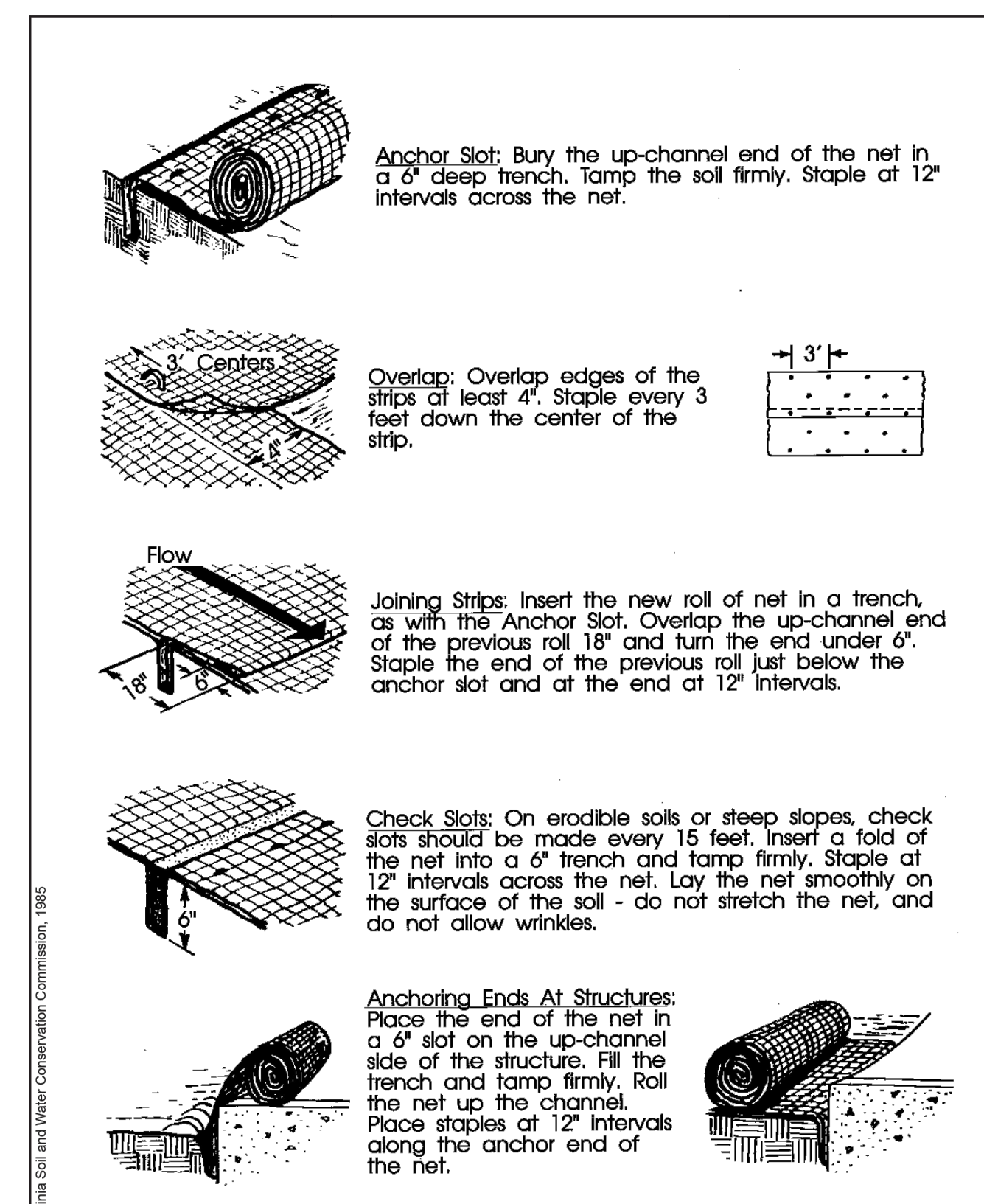


City of Colorado Springs
Storm Water Quality

Figure ECB-1
Erosion Control Blanket
Application Examples

DENM153722.CS.CBfigECB-19-99

3-22



City of Colorado Springs
Storm Water Quality

Figure ECB-2
Erosion Control Blanket
Installation Requirements

DENM153722.CS.CBfigECB-29-99

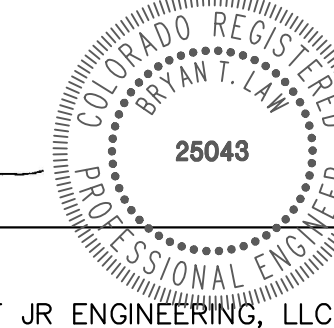
3-23



ENGINEER'S STATEMENT

THIS GRADING AND EROSION CONTROL PLAN WAS PREPARED UNDER MY DIRECTION AND SUPERVISION AND IS CORRECT TO THE BEST OF MY KNOWLEDGE AND BELIEF. SAID PLAN HAS BEEN PREPARED ACCORDING TO THE CRITERIA ESTABLISHED BY THE COUNTY FOR GRADING AND EROSION CONTROL PLANS. I ACCEPT RESPONSIBILITY FOR ANY LIABILITY CAUSED BY ANY NEGLIGENT ACTS, ERRORS OR OMISSIONS ON MY PART IN PREPARING THIS PLANS.

Bryan T. Law, P.E.
 COLORADO P.E. 25043
 FOR AND ON BEHALF OF JR ENGINEERING, LLC



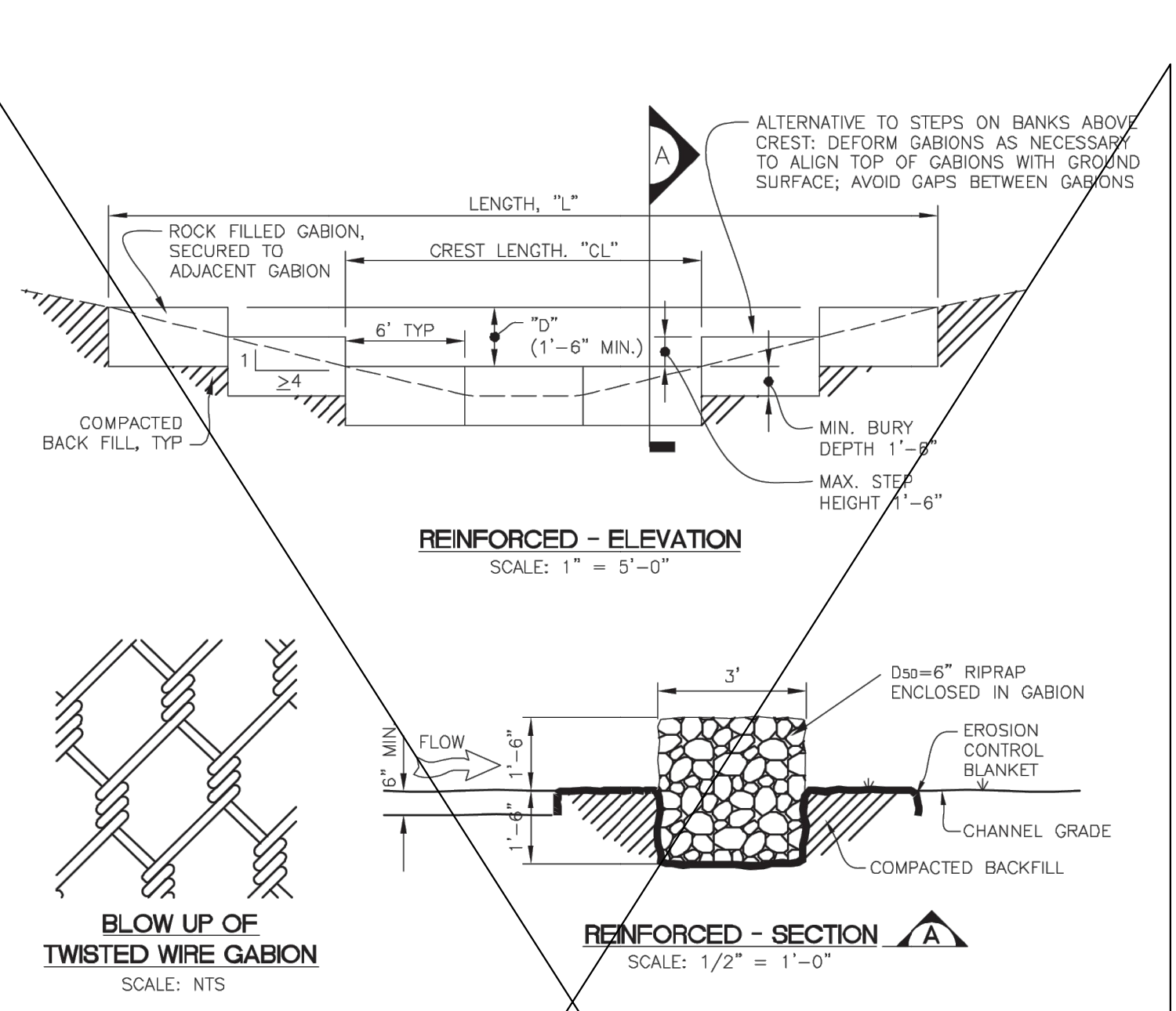
5/15/24
DATE

BY	DATE	No.	REVISION	H-SCALE	N/A	V-SCALE	N/A	DESIGNED BY	SWW	DRAWN BY	SWW	CHECKED BY

SADDLEHORN RANCH - FILING 3
 GRADING & EROSION CONTROL DETAILS

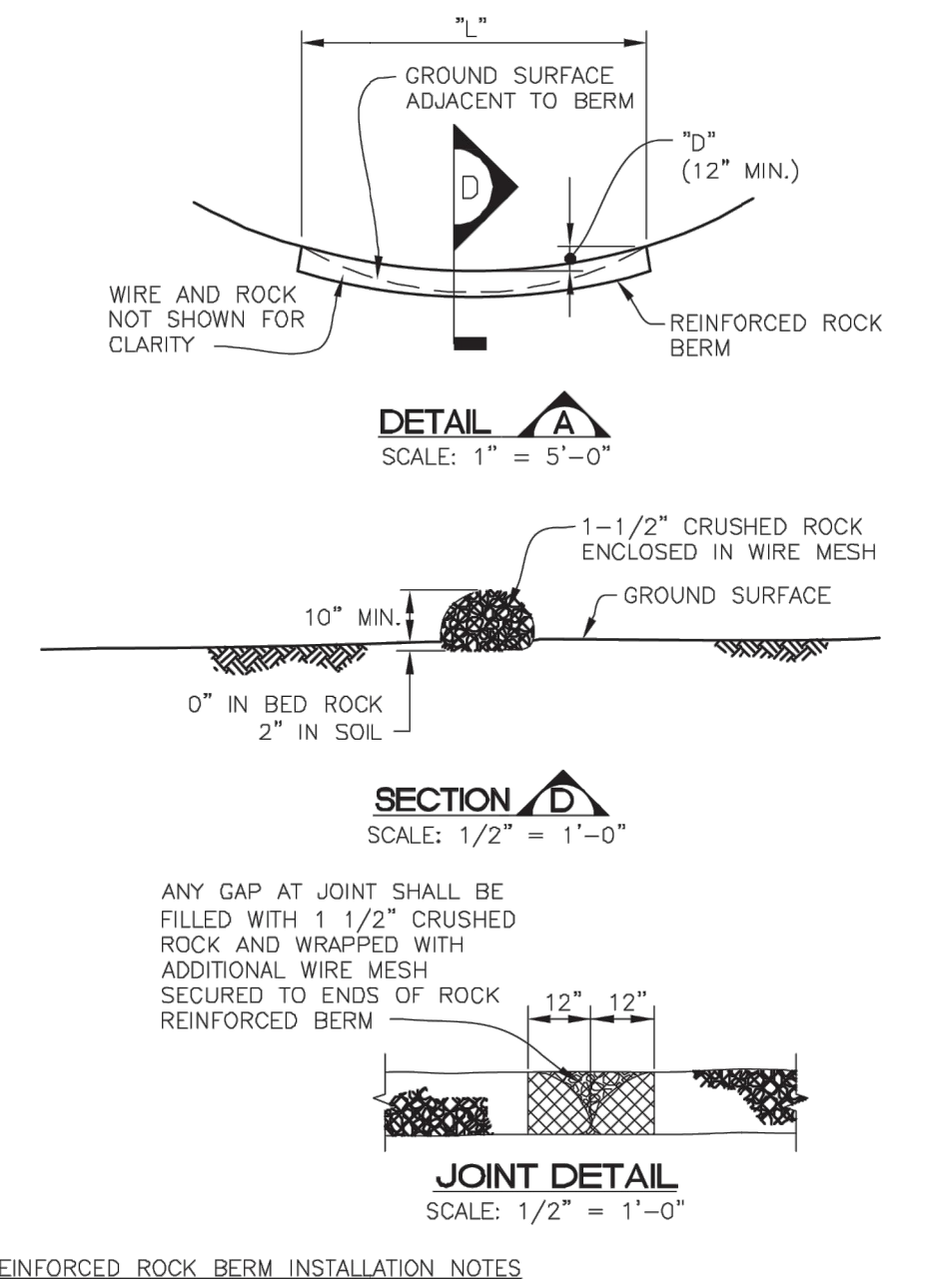
UNLESS SUCH TIME AS THESE DRAWINGS ARE APPROVED BY THE AGENCIES, OR ENGINEERING APPROVES THEIR USE, THESE DRAWINGS ARE DESIGNATED BY WRITTEN AUTHORIZATION.
 PREPARED FOR
 ROI PROPERTY GROUP, LLC
 2495 RIGDON STREET
 NAPA, CALIFORNIA
 (707) 365-6891
 BRADY WILLIAMS

J.R. ENGINEERING
 A Westman Company
 Centennial 303-740-9383 • Colorado Springs 719-583-2583
 Fort Collins 970-491-9888 • www.jrengineering.com



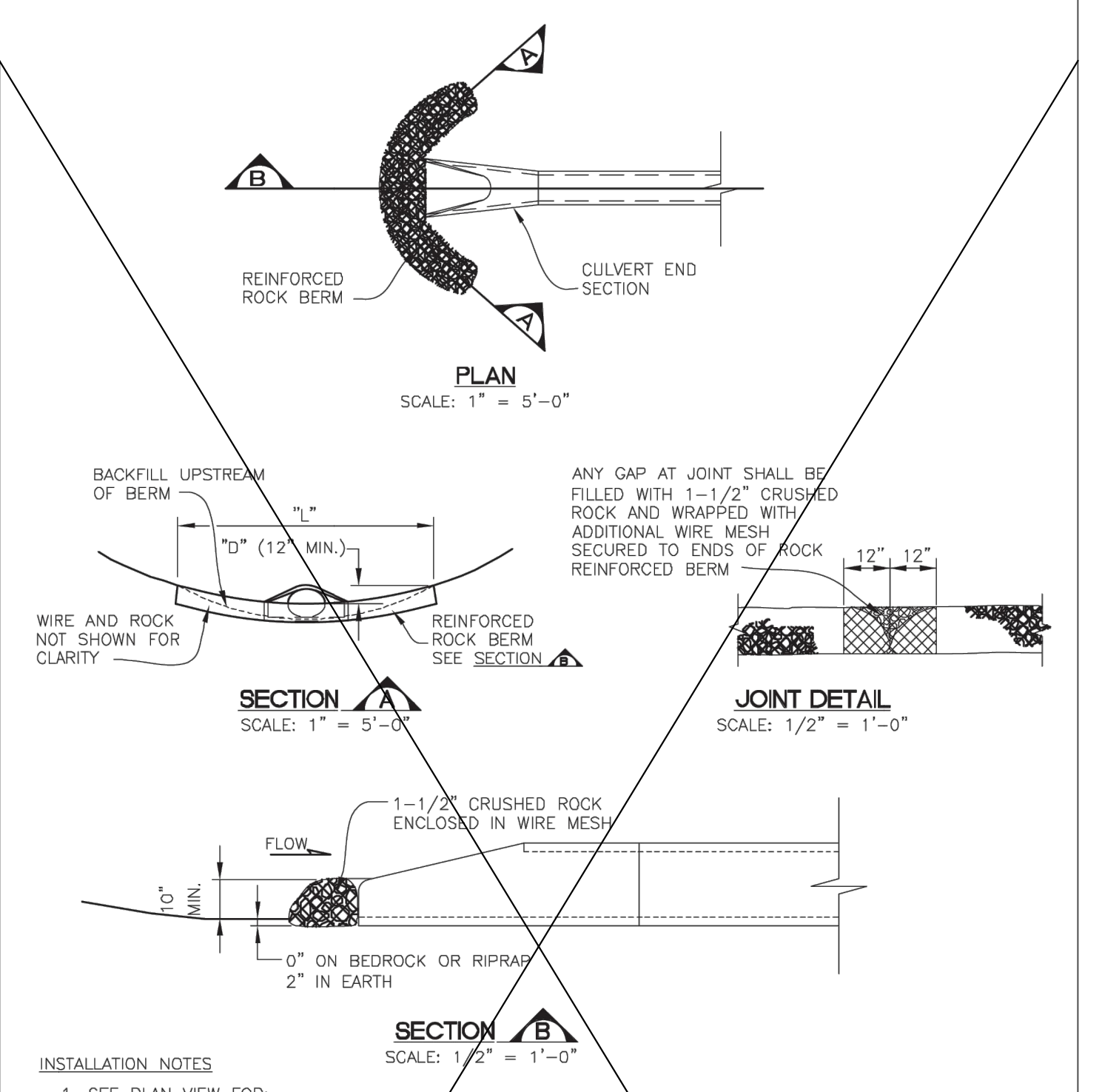
- REINFORCED CHECK DAM INSTALLATION NOTES**
- SEE PLAN VIEW FOR:
 - LOCATIONS OF CHECK DAMS.
 - CHECK DAM TYPE (CHECK DAM OR REINFORCED CHECK DAM).
 - LENGTH, "L", CREST LENGTH, "CL", AND DEPTH, "D".
 - CHECK DAMS INDICATED ON INITIAL GESC PLAN SHALL BE INSTALLED AFTER CONSTRUCTION FENCE, BUT PRIOR TO ANY UPSTREAM LAND-DISTURBING ACTIVITIES.
 - REINFORCED CHECK DAMS, GABIONS SHALL HAVE GALVANIZED TWISTED WIRE NETTING WITH A MAXIMUM OPENING DIMENSION OF 4-1/2" AND A MINIMUM WIRE THICKNESS OF 0.10". WIRE "HOG RINGS" AT 4" SPACING OR OTHER APPROVED MEANS SHALL BE USED AT ALL GABION SEAMS AND TO SECURE THE GABION TO THE ADJACENT GABION.
 - RIPRAP UTILIZED FOR CHECK DAMS SHALL HAVE A D₅₀ MEDIAN STONE SIZE OF 6".
 - THE CHECK DAM SHALL BE TRENCHED INTO THE GROUND A MINIMUM OF 1'-6".
 - EROSION BLANKET SHALL BE PLACED IN THE REINFORCED CHECK DAM TRENCH EXTENDING A MINIMUM OF 1'-6" ON BOTH THE UPSTREAM AND DOWNSTREAM SIDES OF THE REINFORCED CHECK DAM.

- REINFORCED CHECK DAM MAINTENANCE NOTES**
- THE GESC MANAGER SHALL INSPECT CHECK DAMS WEEKLY, DURING AND AFTER ANY STORM EVENT AND MAKE REPAIRS OR CLEAN OUT AS NECESSARY.
 - SEDIMENT ACCUMULATED UPSTREAM OF CHECK DAMS SHALL BE REMOVED WHEN THE SEDIMENT DEPTH UPSTREAM OF CHECK DAM IS WITHIN 1/2 OF THE HEIGHT OF THE CREST.
 - CHECK DAMS ARE TO REMAIN IN PLACE UNTIL THE UPSTREAM DISTURBED AREA IS STABILIZED AND GRASS COVER IS APPROVED BY THE TOWN.
 - WHEN CHECK DAMS ARE REMOVED, EXCAVATIONS SHALL BE FILLED WITH SUITABLE COMPACTED BACK FILL. ANY DISTURBED AREA SHALL BE DRILL SEEDED AND CRIMP MULCHED AND COVERED WITH EROSION CONTROL BLANKET OR OTHERWISE STABILIZED IN A MANNER APPROVED BY THE TOWN.



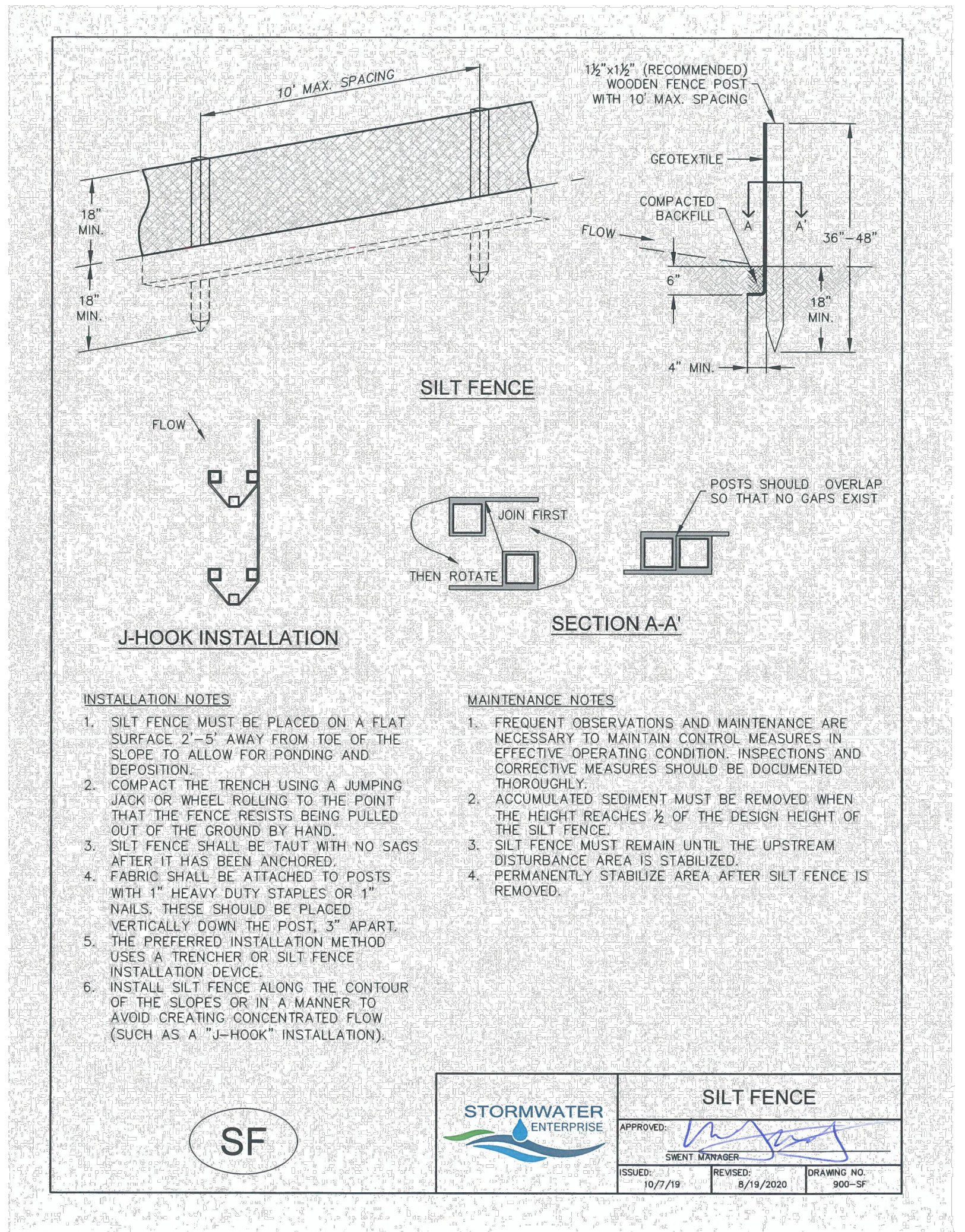
- REINFORCED ROCK BERM INSTALLATION NOTES**
- SEE PLAN VIEW FOR:
 - LOCATIONS OF REINFORCED ROCK BERMS.
 - LENGTH, "L", AND DEPTH, "D" DIMENSIONS.
 - REINFORCED ROCK BERM SECTION APPLIES TO CULVERT INLET FILTER AND INLET PROTECTION.
 - CRUSHED ROCK SHALL BE FRACTURED FACE (ALL SIDES) AND SHALL COMPLY WITH GRADATION SHOWN ON SHEET 14 (1-1/2" MINUS). RECYCLED CONCRETE MEETING THIS GRADATION MAY BE USED.
 - WIRE MESH SHALL BE FABRICATED OF 10 GAUGE WIRE TWISTED INTO A MESH WITH A MAXIMUM OPENING OF 1.0 INCH (COMMONLY TERMED "CHICKEN WIRE"). ROLL WIDTH SHALL BE 48-INCHES.
 - WIRE MESH SHALL BE SECURED USING "HOG RINGS" OR WIRE TIES AT 6-INCH CENTERS ALONG ALL JOINTS AND AT 2-INCH CENTERS ON ENDS OF BERM.
 - FOR CONCENTRATED FLOW AREAS THE ENDS OF THE REINFORCED ROCK BERM SHALL BE 12" HIGHER THAN THE CENTER OF THE BERM.

- REINFORCED ROCK BERM MAINTENANCE NOTES**
- THE GESC MANAGER SHALL INSPECT REINFORCED ROCK BERM WEEKLY, DURING AND AFTER ANY STORM EVENT AND MAKE REPAIRS OR CLEAN OUT AS NECESSARY.
 - SEDIMENT ACCUMULATED UPSTREAM OF REINFORCED ROCK BERM SHALL BE REMOVED WHEN THE SEDIMENT DEPTH UPSTREAM OF FILTER IS WITHIN 5 INCHES OF THE CREST.
 - REINFORCED ROCK BERMS ARE TO REMAIN IN PLACE UNTIL THE UPSTREAM DISTURBED AREA IS STABILIZED AND GRASS COVER IS APPROVED.
 - WHEN REINFORCED ROCK BERMS ARE REMOVED, ANY DISTURBED AREA SHALL BE DRILL SEEDED AND CRIMP MULCHED OR OTHERWISE STABILIZED IN A MANNER APPROVED BY THE TOWN.



- RRB FOR CULVERT PROTECTION INSTALLATION NOTES**
- SEE PLAN VIEW FOR:
 - LOCATIONS OF CULVERT INLET FILTERS.
 - LENGTH, "L", AND DEPTH, "D".
 - CRUSHED ROCK SHALL BE FRACTURED FACE (ALL SIDES) AND SHALL COMPLY WITH GRADATION SHOWN ON SHEET 14 (1-1/2" MINUS). RECYCLED CONCRETE MEETING THIS GRADATION MAY BE USED.
 - WIRE MESH SHALL BE FABRICATED OF 10 GAUGE WIRE TWISTED INTO A MESH WITH A MAXIMUM OPENING OF 1.0 INCH (COMMONLY TERMED "CHICKEN WIRE").
 - WIRE MESH SHALL BE SECURED USING "HOG RINGS" OR WIRE TIES AT 6-INCH CENTERS ALONG ALL JOINTS AND AT 2-INCH CENTERS ON ENDS OF BERM.
 - THE ENDS OF THE REINFORCED ROCK BERM SHALL BE 12" HIGHER THAN THE CENTER OF THE BERM.

- RRB FOR CULVERT PROTECTION MAINTENANCE NOTES**
- THE GESC MANAGER SHALL INSPECT CULVERT INLET FILTER WEEKLY, DURING AND AFTER ANY STORM EVENT AND MAKE REPAIRS OR CLEAN OUT AS NECESSARY.
 - SEDIMENT ACCUMULATED UPSTREAM OF CULVERT INLET FILTER SHALL BE REMOVED WHEN THE SEDIMENT DEPTH UPSTREAM OF FILTER IS 1/2 THE HEIGHT OF THE REINFORCED ROCK BERM.
 - RRB FOR CULVERT PROTECTION ARE TO REMAIN IN PLACE UNTIL THE UPSTREAM DISTURBED AREA IS STABILIZED AND GRASS COVER IS APPROVED BY THE TOWN.
 - WHEN CULVERT INLET FILTERS ARE REMOVED, ANY DISTURBED AREA SHALL BE DRILL SEEDED AND CRIMP MULCHED OR OTHERWISE STABILIZED IN A MANNER APPROVED BY THE TOWN.



- INSTALLATION NOTES**
- SILT FENCE MUST BE PLACED ON A FLAT SURFACE 2'-5" AWAY FROM TOE OF THE SLOPE TO ALLOW FOR PONDING AND DEPOSITION.
 - COMPACT THE TRENCH USING A JUMPING JACK OR WHEEL ROLLING TO THE POINT THAT THE FENCE RESISTS BEING PULLED OUT OF THE GROUND BY HAND.
 - SILT FENCE SHALL BE TAUT WITH NO SAGS AFTER IT HAS BEEN ANCHORED.
 - FABRIC SHALL BE ATTACHED TO POSTS WITH 1" HEAVY DUTY STAPLES OR 1" NAILS. THESE SHOULD BE PLACED VERTICALLY DOWN THE POST, 3" APART.
 - THE PREFERRED INSTALLATION METHOD USES A TRENCHER OR SILT FENCE INSTALLATION DEVICE.
 - INSTALL SILT FENCE ALONG THE CONTOUR OF THE SLOPE OR IN A MANNER TO AVOID CREATING CONCENTRATED FLOW (SUCH AS A "J-HOOK" INSTALLATION).
- MAINTENANCE NOTES**
- FREQUENT OBSERVATIONS AND MAINTENANCE ARE NECESSARY TO MAINTAIN CONTROL MEASURES IN EFFECTIVE OPERATING CONDITION. INSPECTIONS AND CORRECTIVE MEASURES SHOULD BE DOCUMENTED THOROUGHLY.
 - ACCUMULATED SEDIMENT MUST BE REMOVED WHEN THE HEIGHT REACHES 1/2 OF THE DESIGN HEIGHT OF THE SILT FENCE.
 - SILT FENCE MUST REMAIN UNTIL THE UPSTREAM DISTURBANCE AREA IS STABILIZED.
 - PERMANENTLY STABILIZE AREA AFTER SILT FENCE IS REMOVED.

REV	DATE	DESCRIPTION	BY
R1	3/11	GESC MANUAL UPDATES	DVD
R2	5/15	GESC MANUAL UPDATES	DVD

NOTE: SCALES SHOWN ARE FOR 22"x34" SHEETS; ADJUST ACCORDINGLY FOR 11"x17" SHEETS.

UTILITIES DEPARTMENT
Stormwater Engineering Division

GESC GRADING, EROSION, AND SEDIMENT CONTROL

GESC PLAN STANDARD NOTES AND DETAILS
SHEET 7 OF 14

ENGINEER'S STATEMENT

THIS GRADING AND EROSION CONTROL PLAN WAS PREPARED UNDER MY DIRECTION AND SUPERVISION AND IS CORRECT TO THE BEST OF MY KNOWLEDGE AND BELIEF. SAID PLAN HAS BEEN PREPARED ACCORDING TO THE CRITERIA ESTABLISHED BY THE COUNTY FOR GRADING AND EROSION CONTROL PLANS. I ACCEPT RESPONSIBILITY FOR ANY LIABILITY CAUSED BY ANY NEGLIGENT ACTS, ERRORS OR OMISSIONS ON MY PART IN PREPARING THIS PLANS.

Bryan T. Law
BRYAN T. LAW, P.E.
COLORADO P.E. 25043
FOR AND ON BEHALF OF JR ENGINEERING, LLC

5/15/24
DATE



UNTIL SUCH TIME AS THESE DRAWINGS ARE APPROVED BY THE APPROPRIATE REVIEWING AGENCIES, OR ENGINEERING APPROVES THEIR USE, THESE DRAWINGS ARE DESIGNATED BY WRITTEN AUTHORIZATION.

PREPARED FOR
ROI PROPERTY GROUP, LLC
2495 RIGDON STREET
NAPA, CALIFORNIA
(707) 365-6891
BRADY WILLIAMS

J.R. ENGINEERING
A Westman Company
Central 303-740-9888 • Colorado Springs 719-588-2583
Fort Collins 970-491-9888 • www.jrengineering.com

BY	DATE	REVISION

SADDLEHORN RANCH - FILING 3
GRADING & EROSION CONTROL DETAILS

SHEET 13 OF 13
JOB NO. 25142.05