

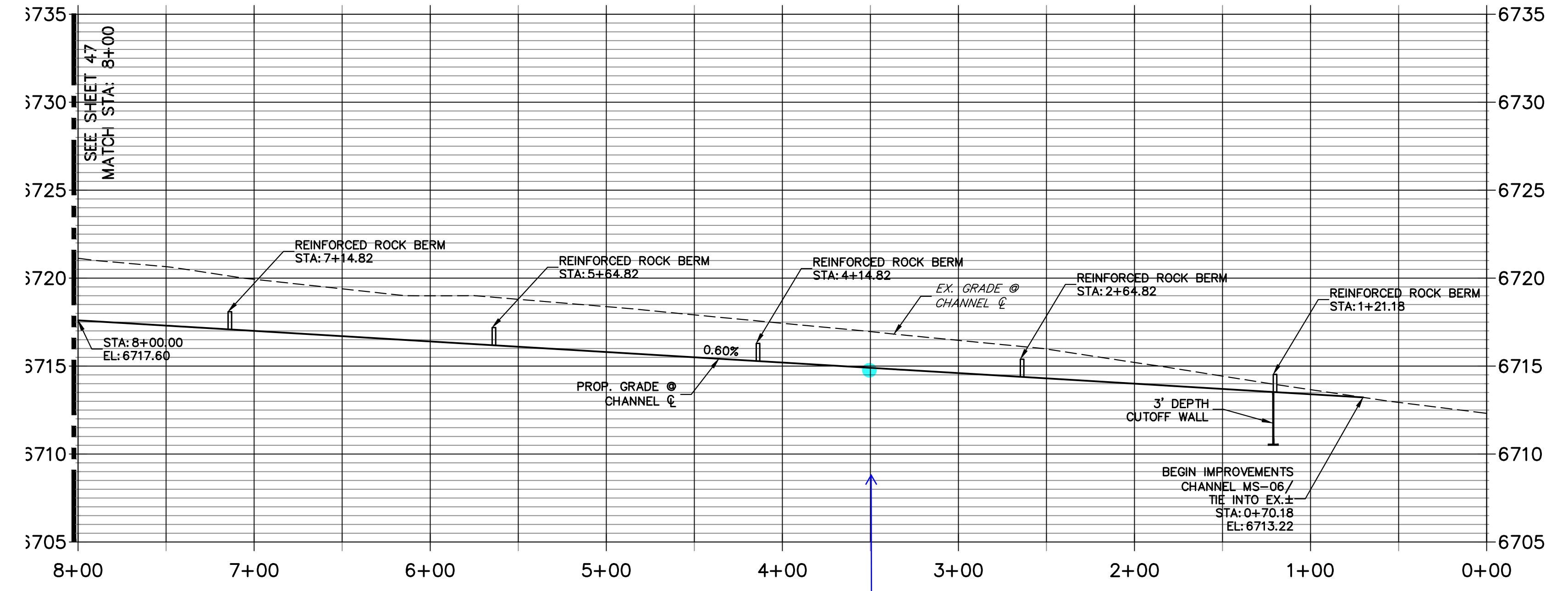
MS-06 CHANNEL IMPROVEMENTS - TYPICAL SECTION

SCALE: 1"=10'
 TYPICAL SECTION FOR CHANNEL EAST OF SAN ISIDRO TRAIL
 CHANNEL SEED MIX: EROSION CONTROL BLANKET WITH PAWNEE BUTTES SEED INC. - "LOW GROW NATIVE MIX"
 -IDAHO FESCUE
 -SANDBERG BLUEGRASS
 -ROCKY MOUNTAIN FESCUE
 -BIG BLUEGRASS

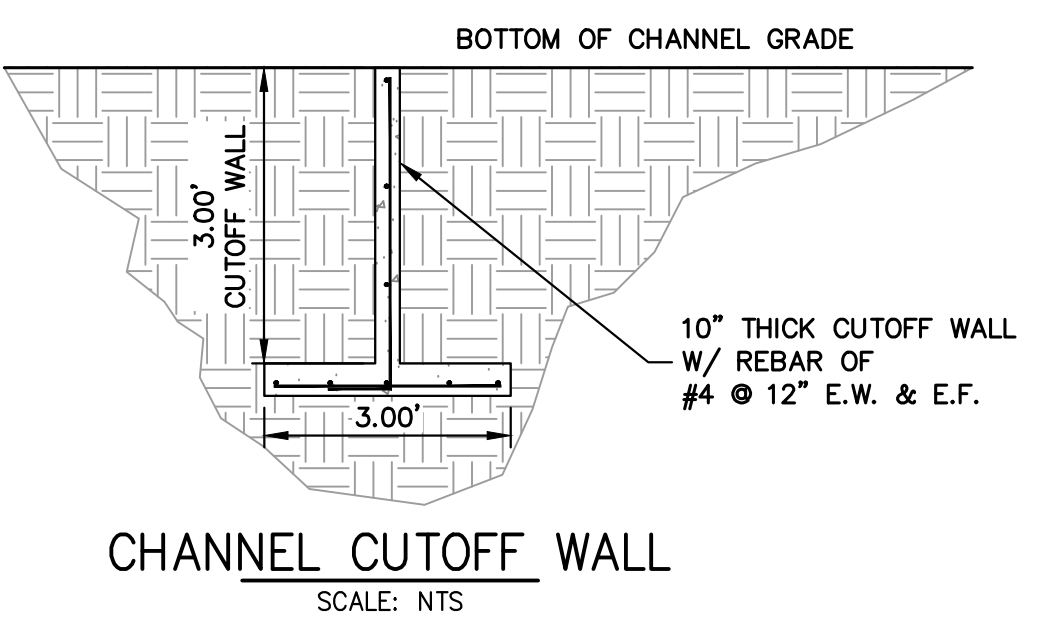
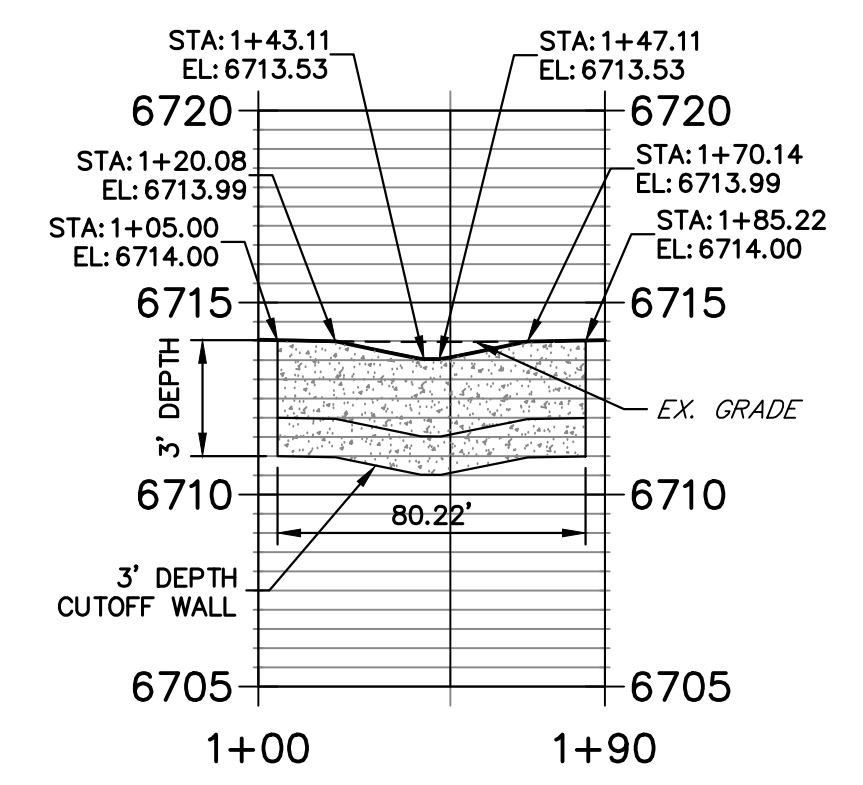
NOTES

- TURF REINFORCING MATS (TRM) PER URBAN STORM DRAINAGE CRITERIA MANUAL (USDGM) VOLUME 3 CRITERIA FOR ROLLED EROSION CONTROL PRODUCTS (RECP), EC-6, TABLE RECP-2.
- DETAILS FOR THE ECB & TRM MEASURES CAN BE FOUND ON SHEET 64

**MS-06 PROFILE
 STA 0+00.00 TO 8+00.00**



**CUTOFF WALL 3 PROFILE
 STA 1+00.00 TO 1+90.22**

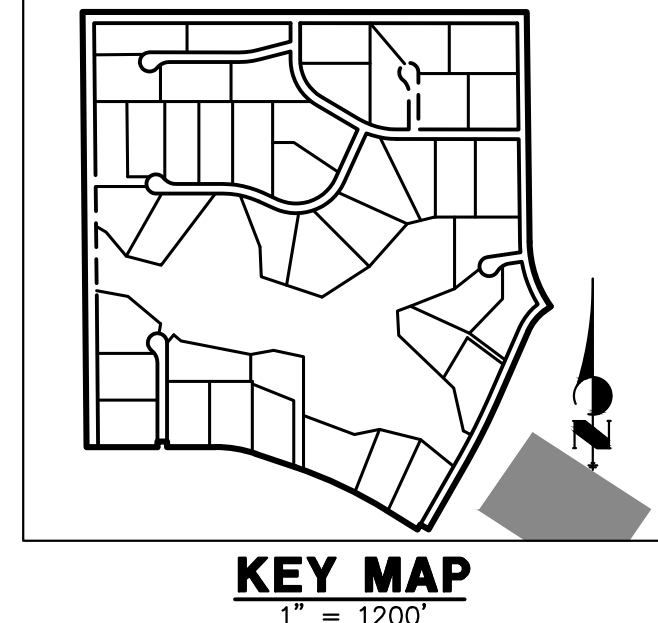


811 Know what's below. Call before you dig.

HORIZONTAL ORIGINAL SCALE: 1" = 50'
 VERTICAL ORIGINAL SCALE: 1" = 5'

ENGINEER'S STATEMENT
 PREPARED UNDER MY DIRECT SUPERVISION AND ON BEHALF OF JR ENGINEERING
 BRYAN T. LAW, P.E.
 COLORADO P.E. 25043
 FOR AND ON BEHALF OF JR ENGINEERING, LLC

DATE: 4/22/24



UNTIL SUCH TIME AS THESE DRAWINGS ARE APPROVED BY THE APPROPRIATE REVIEWING AGENCIES, JR ENGINEERING APPROVES THEIR USE AS DESIGNATED BY WRITTEN AUTHORIZATION.

PREPARED FOR
ROI PROPERTY GROUP, LLC
 2495 RIGDON STREET
 NAPA, CALIFORNIA
 (707) 365-6891
 BRADY WILLIAMS

J.R. ENGINEERING
 A Westman Company
 Centennial 300-740-9888 • Colorado Springs 719-588-2583
 Fort Collins 970-491-9888 • www.jrengineering.com

No.	REVISION	BY	DATE