

**GENERAL NOTES**

- A. IF ANY UTILITY LINES, PIPELINES, OR UNDERGROUND UTILITY LINES ARE SHOWN ON THESE DRAWINGS, THEY ARE SHOWN IN APPROXIMATE MANNER ONLY, AND SUCH LINES MAY EXIST WHERE NONE ARE SHOWN. IF ANY SUCH EXISTING LINES ARE SHOWN, THE LOCATION IS BASED UPON INFORMATION PROVIDED BY THE UTILITY OR PIPELINE COMPANY, THE OWNER, OR BY OTHERS, AND THE INFORMATION MAY BE INCOMPLETE, OR BE OBSOLETE BY THE TIME CONSTRUCTION COMMENCES.
- B. THE ENGINEER HAS UNDERTAKEN NO FIELD VERIFICATION OF THE LOCATION, DEPTH, SIZE, OR TYPE OF EXISTING UTILITY LINES, PIPELINES, OR UNDERGROUND UTILITY LINES, MAKES NO REPRESENTATION PERTAINING THERETO, AND ASSUMES NO RESPONSIBILITY OR LIABILITY THEREFOR. THE CONTRACTOR SHALL INFORM ITSELF OF THE LOCATION OF ANY UTILITY LINE, PIPELINE, OR UNDERGROUND UTILITY LINE IN OR NEAR THE AREA OF WORK IN ADVANCE OF ANY DURING EXCAVATION WORK. THE CONTRACTOR IS FULLY RESPONSIBLE FOR ANY AND ALL DAMAGE CAUSED BY ITS FAILURE TO LOCATE, IDENTIFY AND PRESERVE ANY AND ALL EXISTING UTILITIES, PIPELINES, AND UNDERGROUND UTILITY LINES. THE CONTRACTOR SHALL COMPLY WITH STATE STATUTES, MUNICIPAL, AND LOCAL ORDINANCES, RULES AND REGULATIONS, IF ANY, PERTAINING TO THE LOCATION OF THESE LINES AND FACILITIES, IN PLANNING AND CONDUCTING EXCAVATION, WHETHER BY CALLING OR NOTIFYING THE UTILITIES, COMPLYING WITH "BLUE STAKES" PROCEDURES, OTHERWISE.

**SHEET KEYED NOTES**

1. EXISTING 40 FOOT POLE WITH FOUR LIGHT FIXTURES CONTAINING HIGH PRESSURE SODIUM LAMPS.
2. EXISTING 40 FOOT POLE WITH TWO LIGHT FIXTURES CONTAINING METAL HALIDE LAMPS.
3. EXISTING 20 FOOT POLE WITH TWO LIGHT FIXTURES CONTAINING HIGH PRESSURE SODIUM LAMPS.

CONSULTANTS

ROCKY TOP RESOURCES

**PHOTOMETRIC DOCUMENT**

MARCH 21, 2019

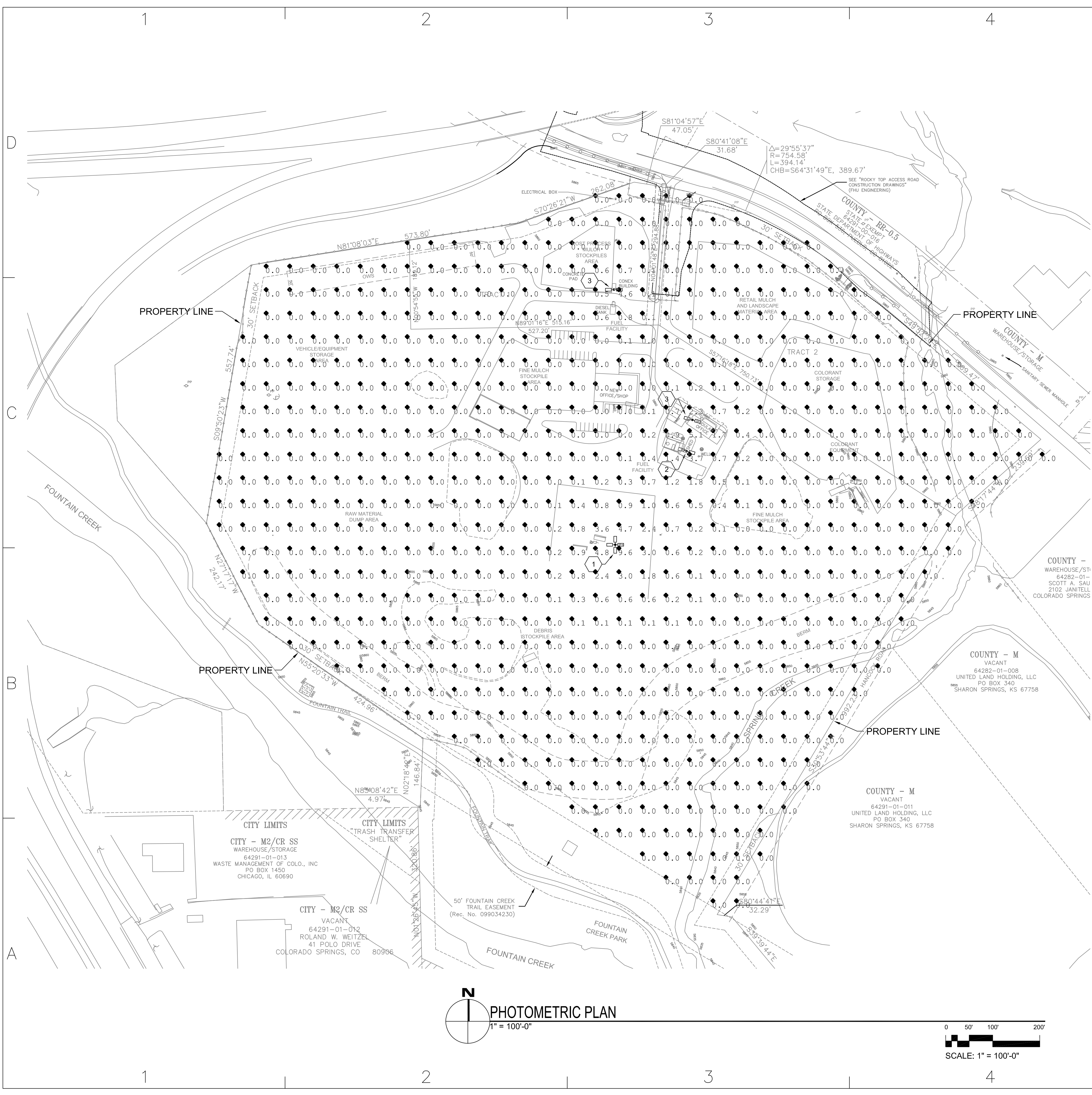
MARK	DATE	DESCRIPTION

PROJECT NO: 8037  
 CAD FILE NAME: 8037\_E1.0.DWG  
 DRAWN BY: RJO  
 CHK'D BY: WMB  
 SHEET TITLE

**ELECTRICAL SITE  
 PHOTOMETRIC PLAN**

E1.0

SHEET - OF -



**PHOTOMETRIC PLAN**  
 1" = 100'-0"

