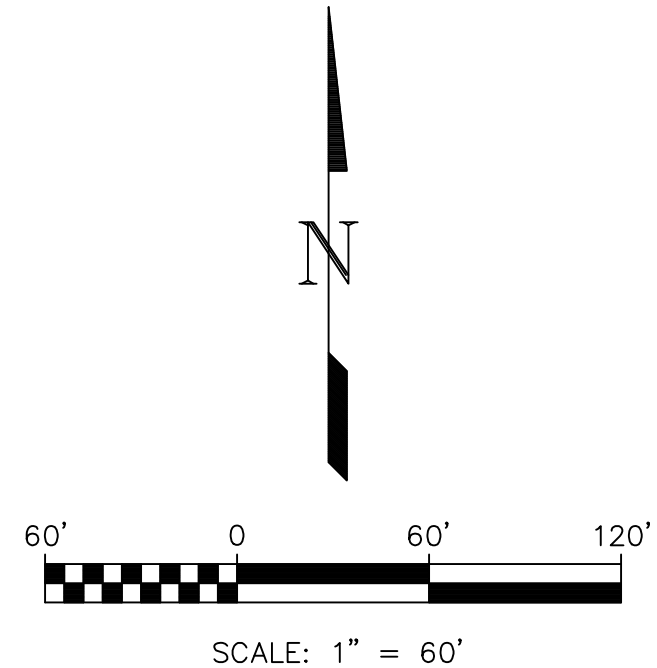
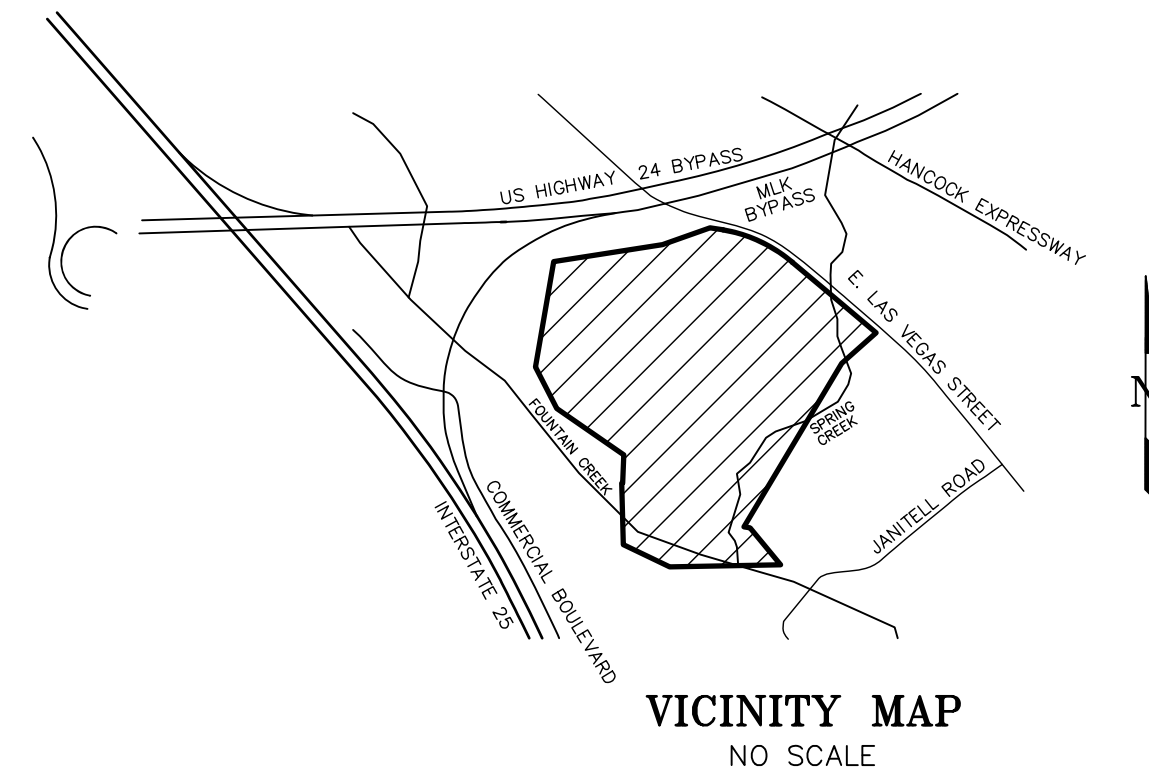
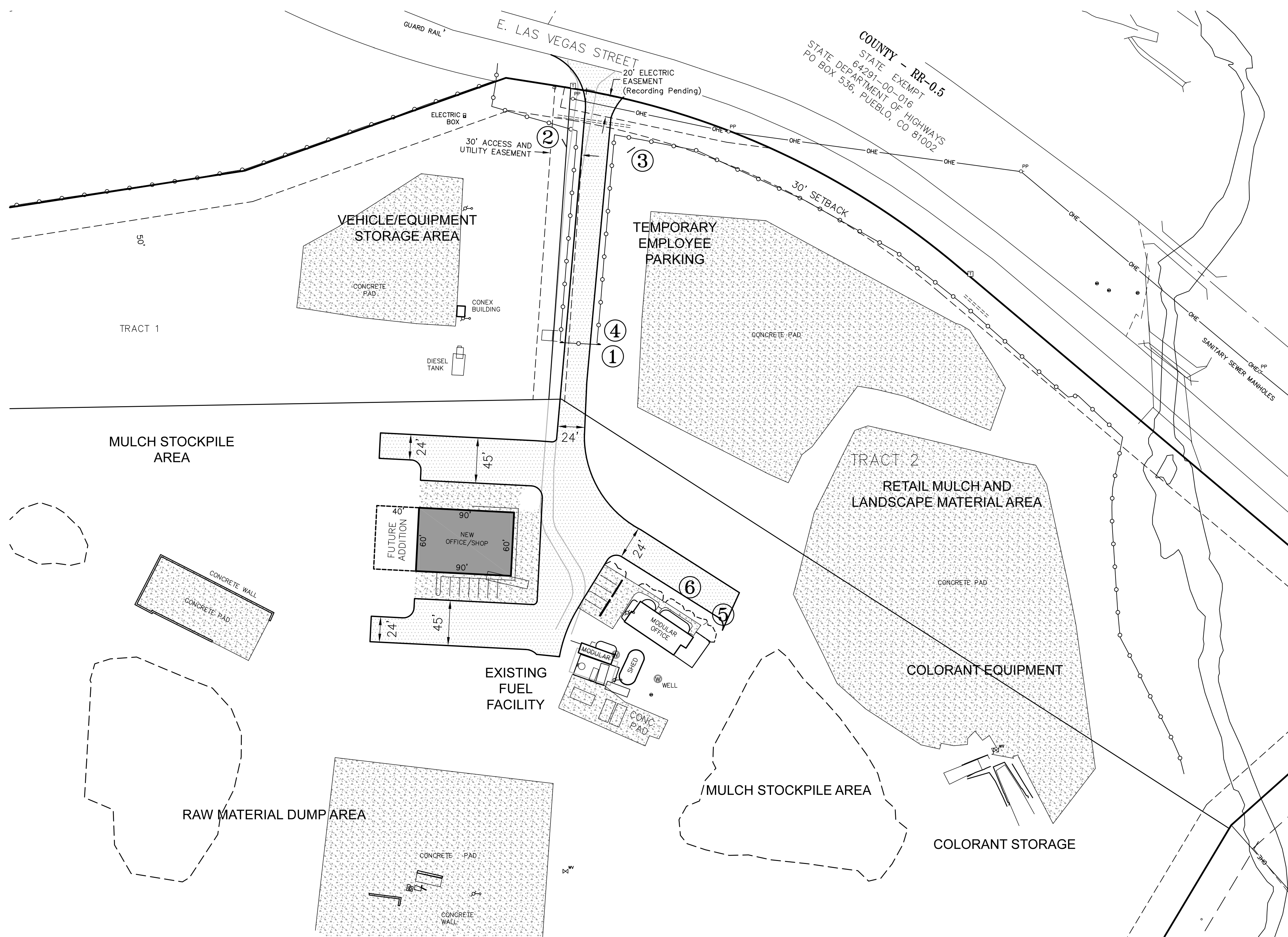


ROCKY TOP RESOURCES

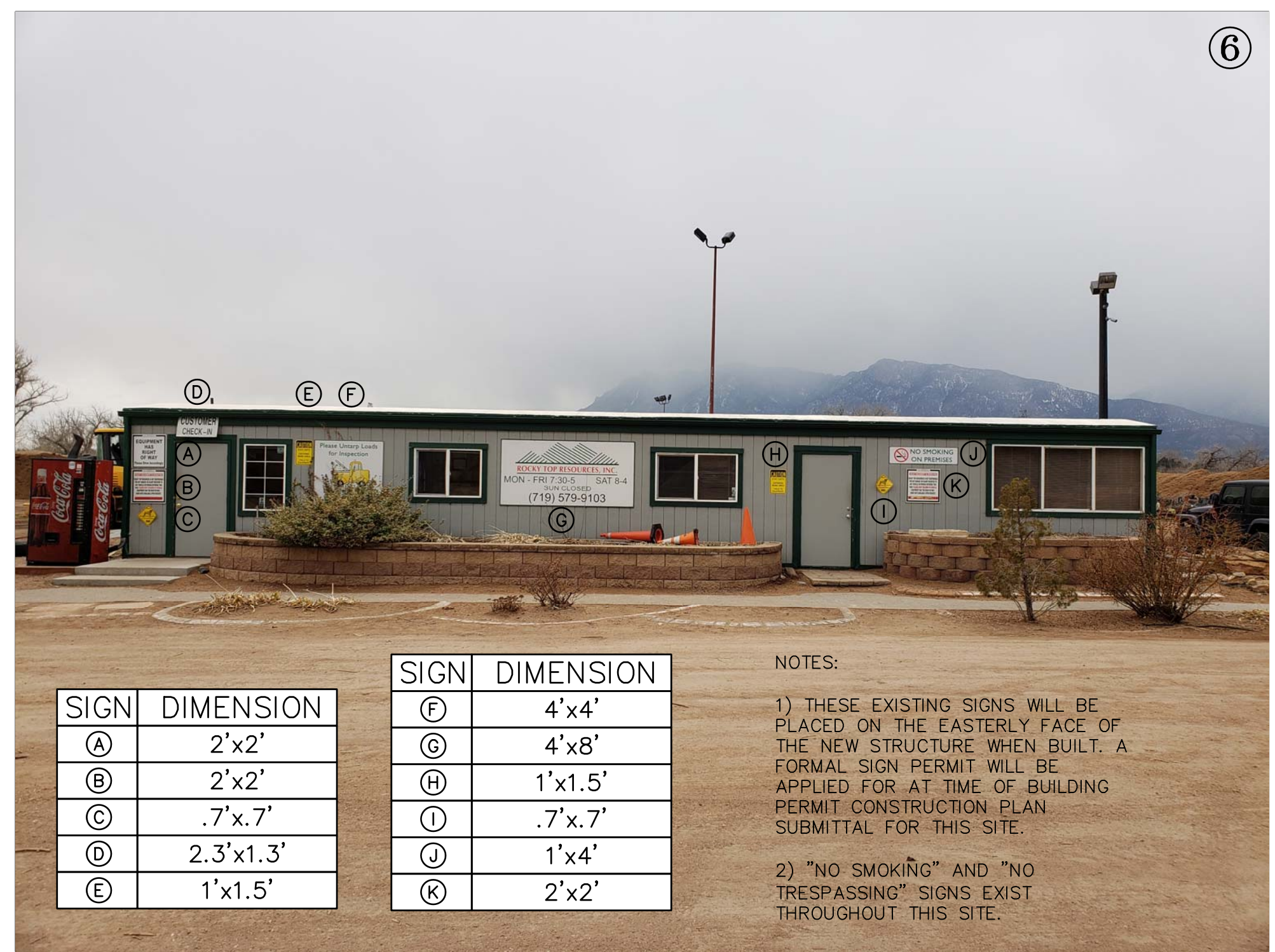
SIGN PLAN

1755 E. LAS VEGAS STREET, COLORADO SPRINGS, EL PASO COUNTY, COLORADO



OWNER/DEVELOPER:
 ROCKY TOP RESOURCES, INC.
 ATTN: FREDRICK D. MARTIN
 1755 E. LAS VEGAS STREET
 COLORADO SPRINGS, CO 80903-4323
 (719) 579-9103

PLANNING CONSULTANT:
 LAND DEVELOPMENT CONSULTANTS, INC.
 ATTN: DAVID V. HOSTETLER
 3898 MAZELAND ROAD
 COLORADO SPRINGS, CO 80909
 (719) 528-6133



SIGN	DIMENSION	SIGN	DIMENSION
A	2'x2'	F	4'x4'
B	2'x2'	G	4'x8'
C	.7'x.7'	H	1'x1.5'
D	2.3'x1.3'	I	.7'x.7'
E	1'x1.5'	J	1'x4'
		K	2'x2'

NOTES:
 1) THESE EXISTING SIGNS WILL BE PLACED ON THE EASTERLY FACE OF THE NEW STRUCTURE WHEN BUILT. A FORMAL SIGN PERMIT WILL BE APPLIED FOR AT TIME OF BUILDING PERMIT CONSTRUCTION PLAN SUBMITTAL FOR THIS SITE.
 2) "NO SMOKING" AND "NO TRESPASSING" SIGNS EXIST THROUGHOUT THIS SITE.



CALL BEFORE YOU DIG ...

811 DIAL 811

48 HOURS BEFORE YOU DIG, CALL UTILITY LOCATORS FOR LOCATING AND MARKING GAS, ELECTRIC, WATER AND FIBER OPTIC.

REVISIONS	No.	Description	Date
	1	DATA CLARIFICATION	06/29/19

H Scale: 1" = 100'
 V Scale: N/A
 Designed By: N/A
 Drawn By: SLG
 Checked By: DVH
 Date: 02/26/2019

Land Development Consultants, Inc.
 PLANNING · SURVEYING

www ldc inc com · TEL: (719) 528-6133 · FAX: (719) 528-8848
 3898 MAZELAND ROAD · COLORADO SPRINGS, CO 80909

ROCKY TOP RESOURCES SIGN PLAN

PORTIONS OF THE EAST HALF OF THE NORTHEAST QUARTER OF SECTION 29 AND THE WEST HALF OF SECTION 28, TOWNSHIP 14 SOUTH, RANGE 66 WEST OF THE 6TH P.M., EL PASO COUNTY, COLORADO

Project No.: 04048
 Sheet: 1 of 1

F:\04048\04048 - Rocky Top Resources\04048 - SIGN PLAN 05-25-19.dwg