



CORE
ENGINEERING GROUP

September 2, 2020

El Paso County
Planning & Community Development
2880 International Circle, Suite 110
Colorado Springs, CO 80910

Attn.: Project Manager

RE: Creekside at Lorson Ranch Filing No. 1 (SF 19-013)
Private Detention/Stormwater Quality Ponds CR-1, CR2, CR3
As-built Certification

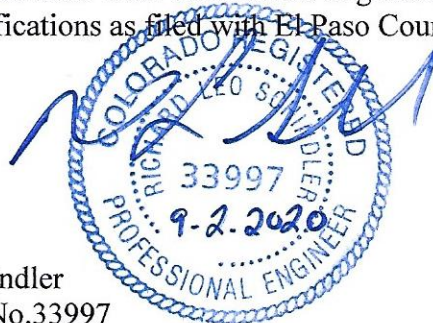
Dear Project Manager:

Per the approved construction drawings for Creekside at Lorson Ranch Filing No. 1 (SF 19-013), improvements were made to construct a full spectrum detention pond including water quality facility in compliance with the current El Paso County Drainage Criteria and the approved Final Drainage Report for this project.

Based upon this information and periodic site visits by field personnel to the project during significant/key phases of the stormwater BMP installation, Core Engineering Group, LLC is of the opinion that the detention and stormwater BMPs have been constructed in general compliance with the approved design plans and specifications as filed with El Paso County.

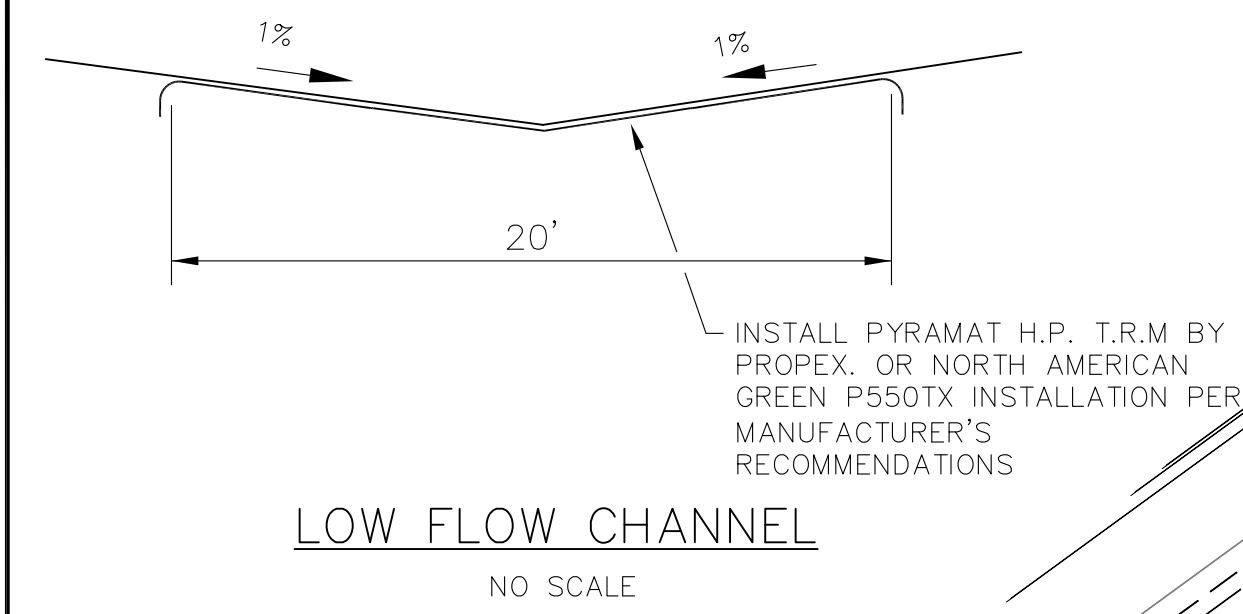
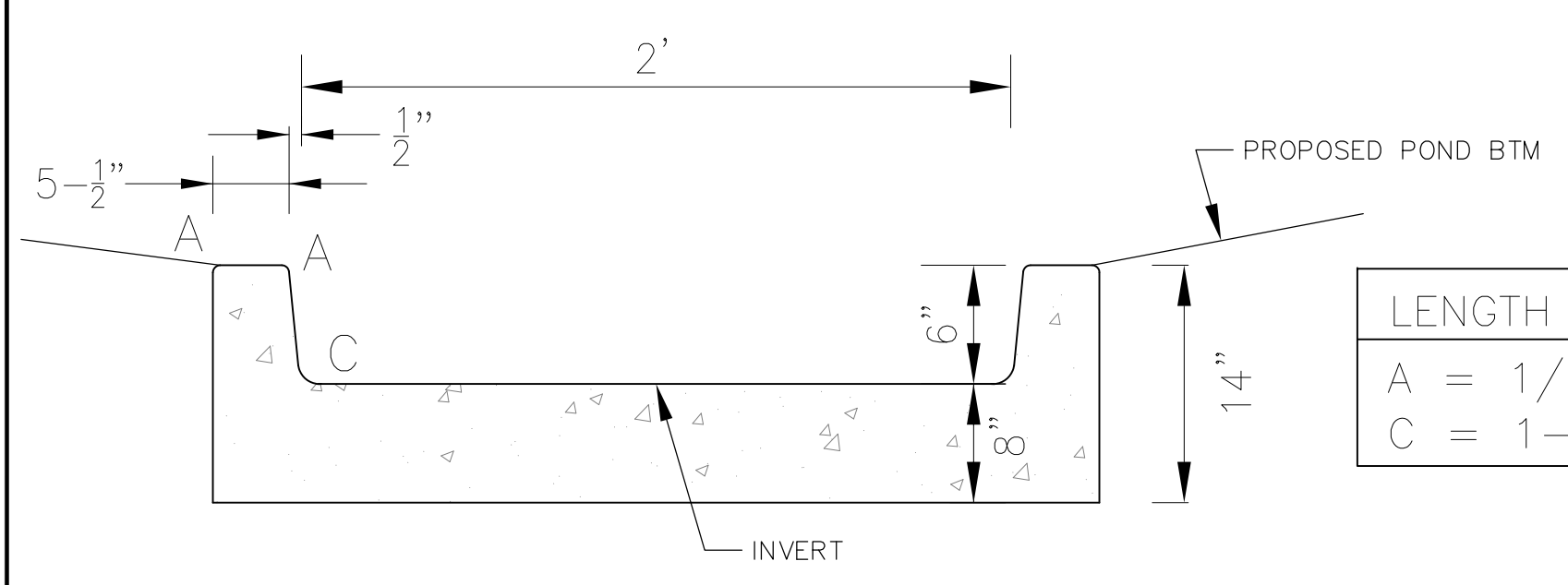
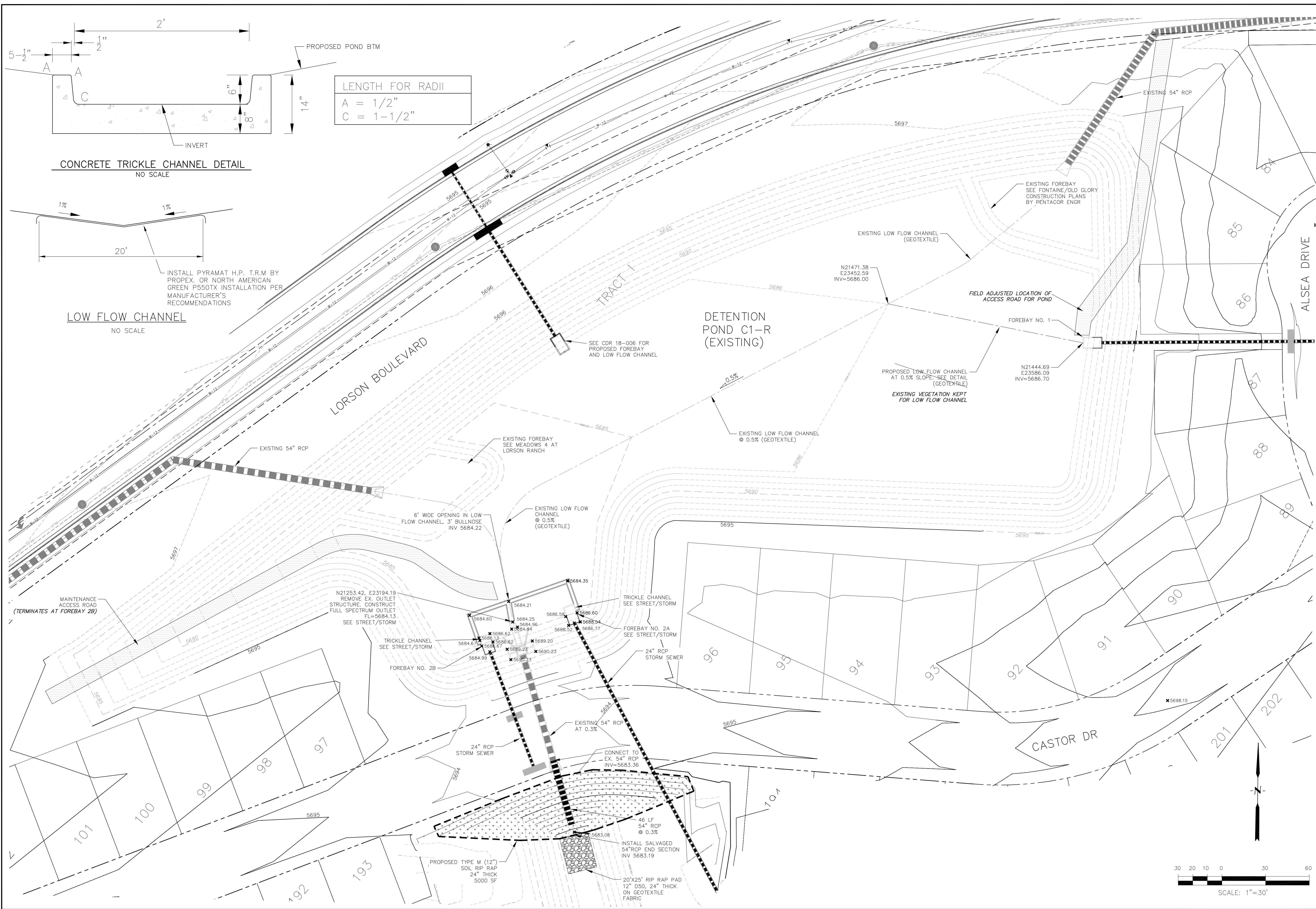
Statement Of Engineer of Record

To the best of my knowledge, information and belief, for the referenced project above, the improvements have been constructed in general compliance with the approved design plans and specifications as filed with El Paso County.



Richard L. Schindler
Colorado P.E. No.33997
For and on behalf of Core Engineering Group, LLC

Attachments: Pond CR-1, CR2, CR3 As-Built Drawings



LENGTH FOR RADII
 A = 1/2"
 C = 1-1/2"

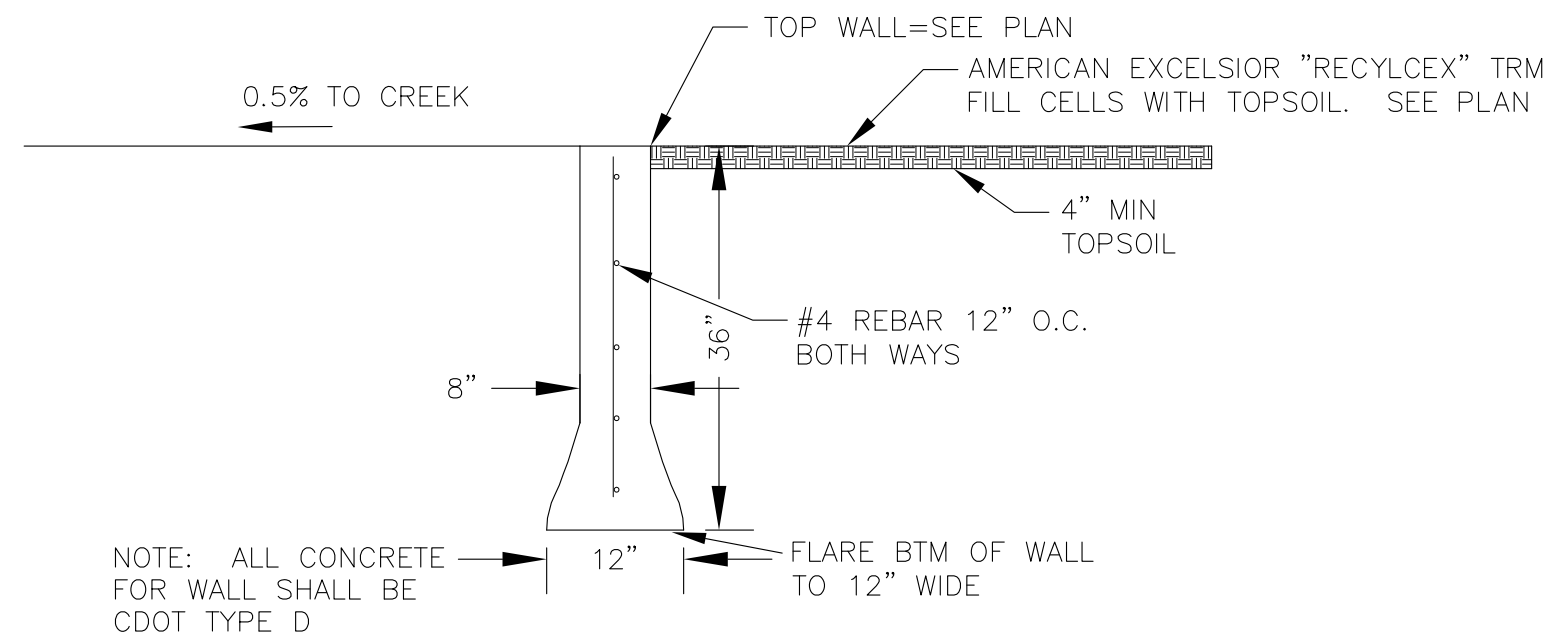
CORE
ENGINEERING GROUP
 15004 1ST AVENUE S.
 BLDG 100
 PHO: 719.570.1100
 CONTACT: RICHARD L. SCHINDLER, P.E.
 EMAIL: Rich@cegi.com

DATE: _____
 DESCRIPTION: _____
 NO: _____
 PREPARED FOR: **LOLORSON, LLC**
 212 N. WAHSATCH AVE, SUITE 301
 COLORADO SPRINGS, COLORADO 80903
 PROJECT: **CREEKSIDE AT LORSON RANCH**
 FILING NO. 1
 LORSON BLVD-OLD GLORY DR.
 COLORADO SPRINGS, COLORADO
 CONTACT: JEFF MARK

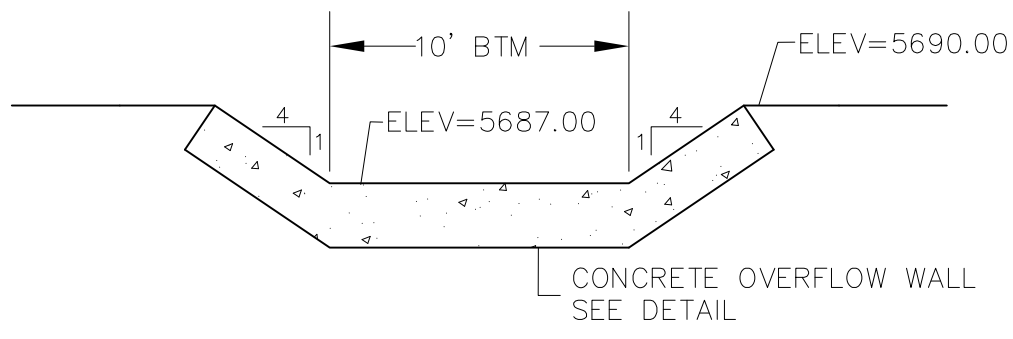
DRAWN: RLS
 DESIGNED: RLS
 CHECKED: RLS

CREEKSIDE AT LORSON RANCH FIL. 1
EXISTING DETENTION POND C1-R
AS-BUILT

DATE: SEPT 2, 2020
 PROJECT NO. 100.045
 SHEET NUMBER **AB1**
 TOTAL SHEETS: X

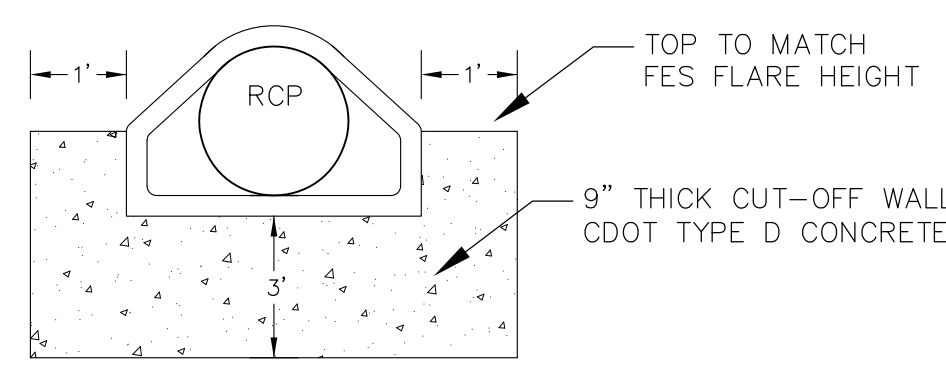


POND CONCRETE OVERFLOW WALL
NO SCALE

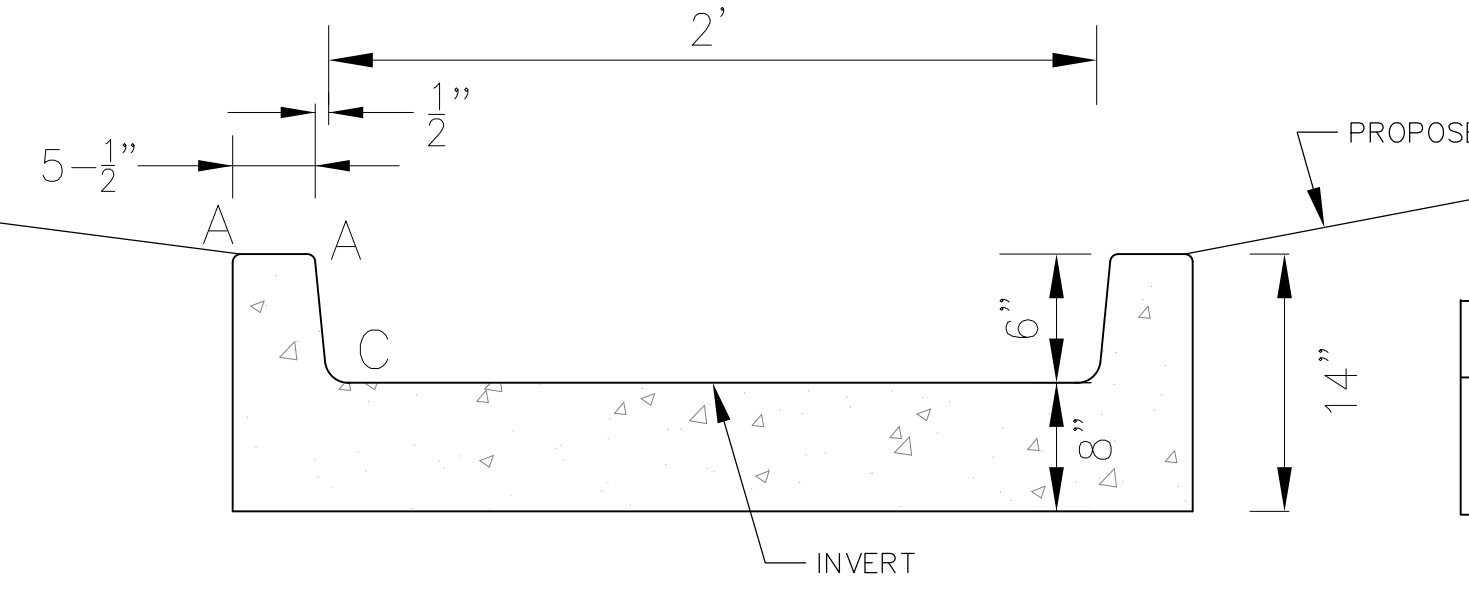
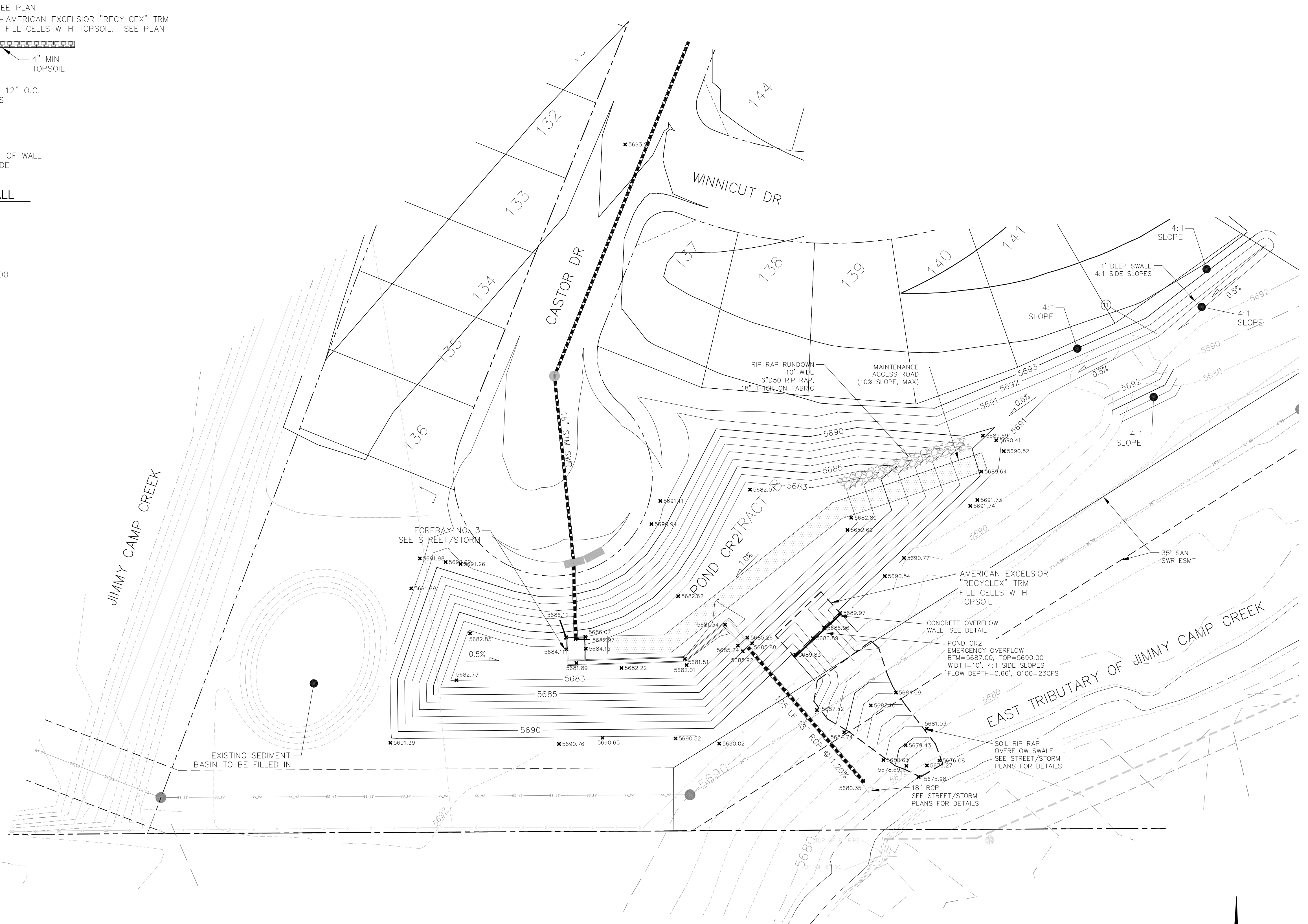


POND CR2 EMERGENCY OVERFLOW PROFILE
SCALE: NTS

- NOTE:**
1. POND SLOPES SHALL BE 4:1 UNLESS OTHERWISE NOTED
 2. STRAW ECB SHALL BE PLACED ON ALL POND SIDE SLOPES UNLESS NOTED OTHERWISE

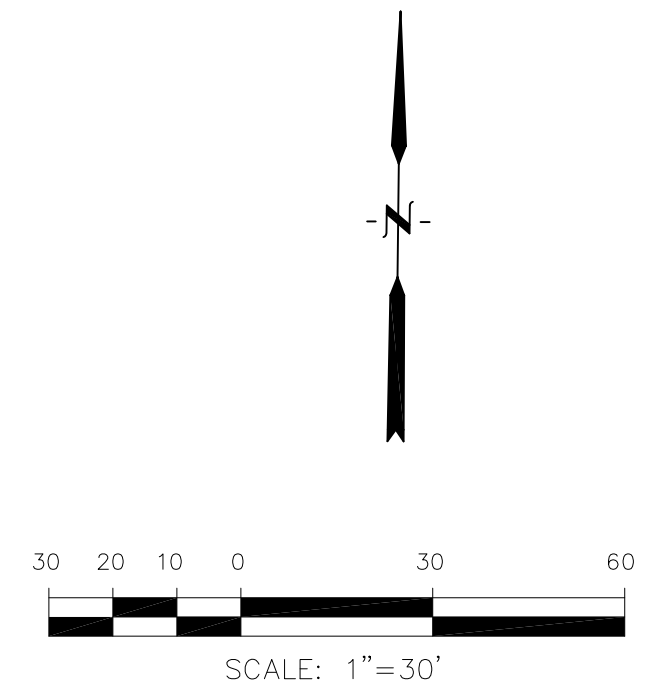


CONCRETE CUT-OFF WALL
N.T.S.



CONCRETE TRICKLE CHANNEL DETAIL
NO SCALE

LENGTH FOR RADII	
A	= 1/2"
C	= 1-1/2"



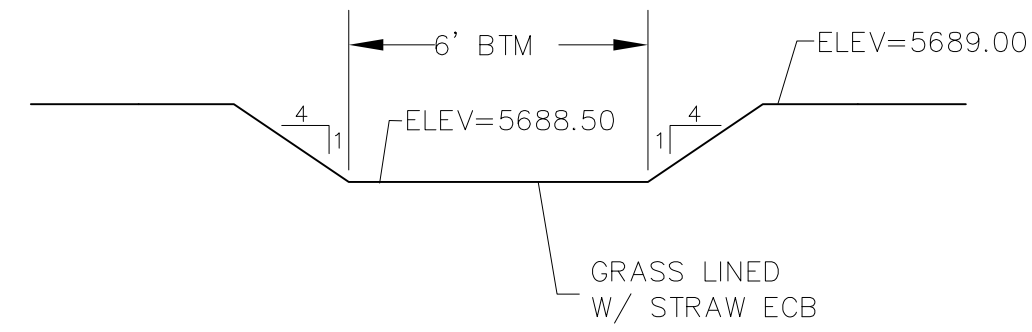
CORE ENGINEERING GROUP
15004 1ST AVENUE S.
DENVER, CO 80202
PH: 719.570.1100
CONTACT: RICHARD L. SCHINDLER, P.E.
EMAIL: Rich@ceg1.com

DATE: _____
DESCRIPTION: _____
NO: _____
PREPARED FOR: **LORSON, LLC**
212 N. WAHSATCH AVE, SUITE 301
COLORADO SPRINGS, COLORADO 80903
PROJECT: **CREEKSIDE AT LORSON RANCH FILING NO. 1**
LORSON BLVD-OLD GLODY DR
COLORADO SPRINGS, COLORADO
CONTACT: JEFF MARK

DRAWN: RLS
DESIGNED: RLS
CHECKED: RLS

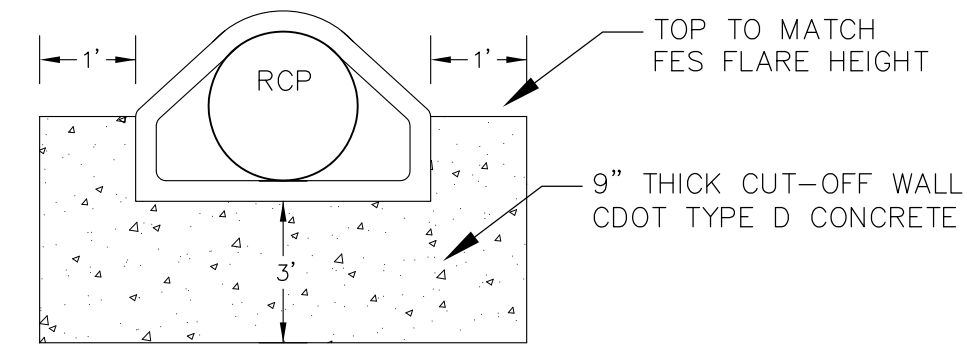
CREEKSIDE AT LORSON RANCH FIL. 1
FULL SPECTRUM DETENTION POND CR2
AS-BUILT

DATE: SEPT 2, 2020
PROJECT NO. 100.045
SHEET NUMBER **AB2**
TOTAL SHEETS: X



POND CR3 SECONDARY EMERGENCY OVERFLOW

SCALE: NTS

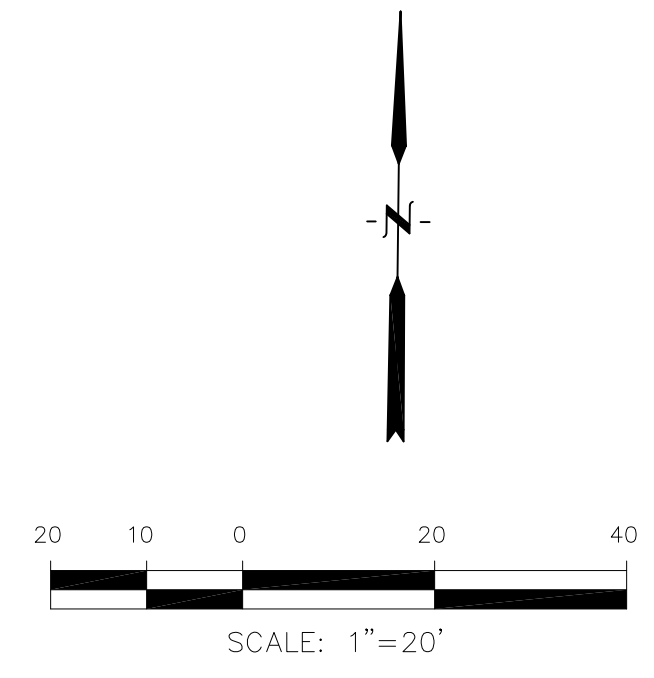
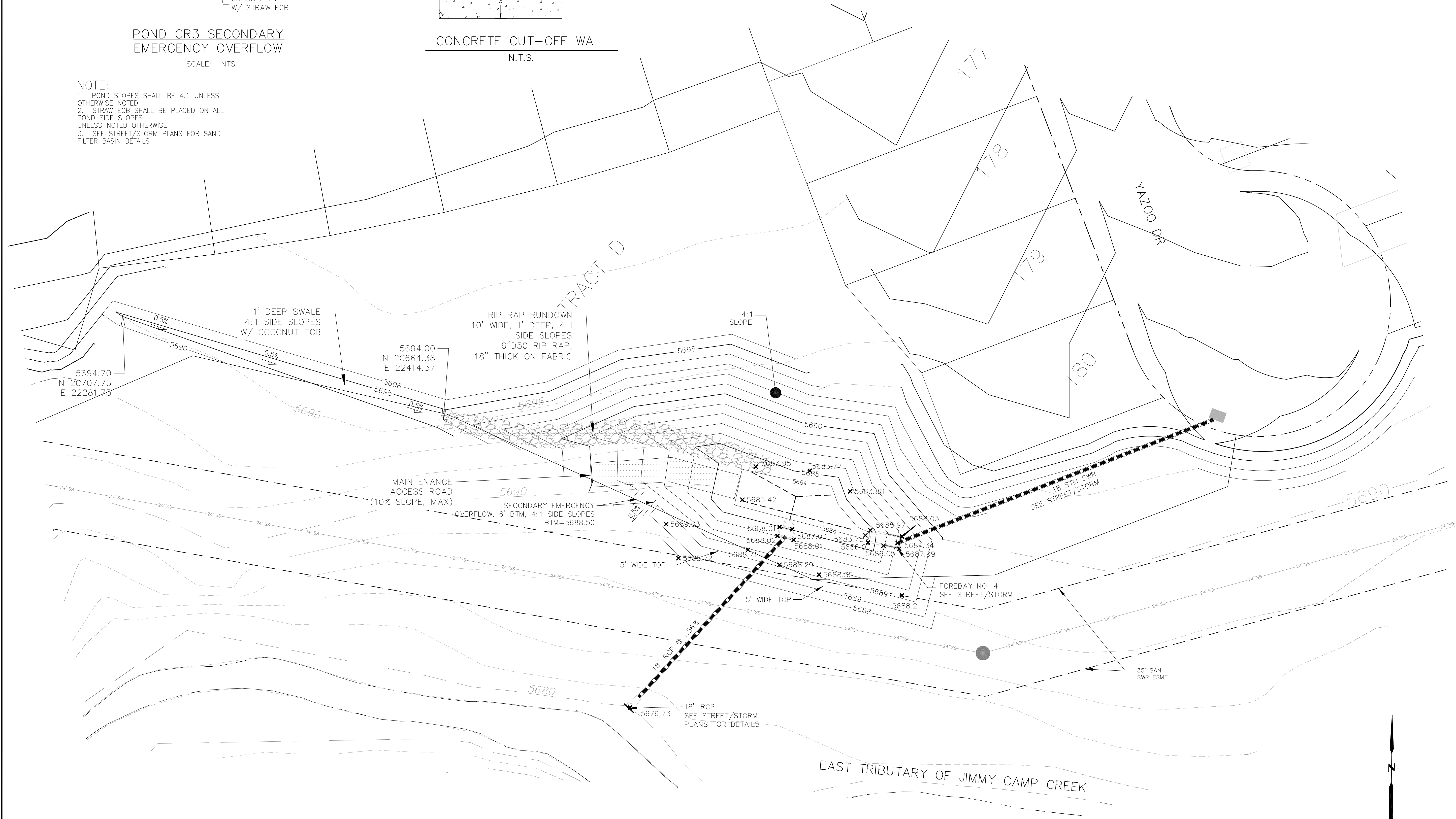


CONCRETE CUT-OFF WALL

N.T.S.

NOTE:

1. POND SLOPES SHALL BE 4:1 UNLESS OTHERWISE NOTED
2. STRAW ECB SHALL BE PLACED ON ALL POND SIDE SLOPES UNLESS NOTED OTHERWISE
3. SEE STREET/STORM PLANS FOR SAND FILTER BASIN DETAILS



CORE ENGINEERING GROUP
 15004 1ST AVENUE S.
 SUITE 100
 BLDG 719 #710
 PHOENIX, AZ 85006
 CONTACT: RICHARD L. SCHINDLER, P.E.
 EMAIL: Rich@cegi.com

DATE: _____
 DESCRIPTION: _____
 NO: _____
 PREPARED FOR: **LORSON, LLC**
 212 N. WAHSATCH AVE, SUITE 301
 COLORADO SPRINGS, COLORADO 80903
 CONTACT: JEFF MARK
 PROJECT: **CREEKSIDE AT LORSON RANCH FILING NO. 1**
 LORSON BLVD-OLD GLORY DR. COLORADO SPRINGS, COLORADO

DRAWN: RLS
 DESIGNED: RLS
 CHECKED: RLS

**CREEKSIDE AT LORSON RANCH FIL. 1
 DETENTION POND CR3 (SFB)
 AS-BUILT**

DATE: SEPT 2, 2020
 PROJECT NO. 100.045
 SHEET NUMBER **AB3**
 TOTAL SHEETS: X