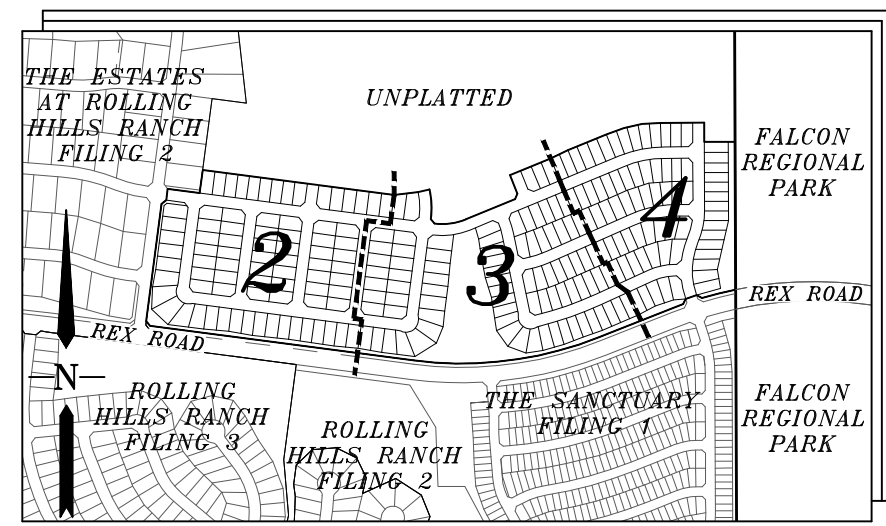


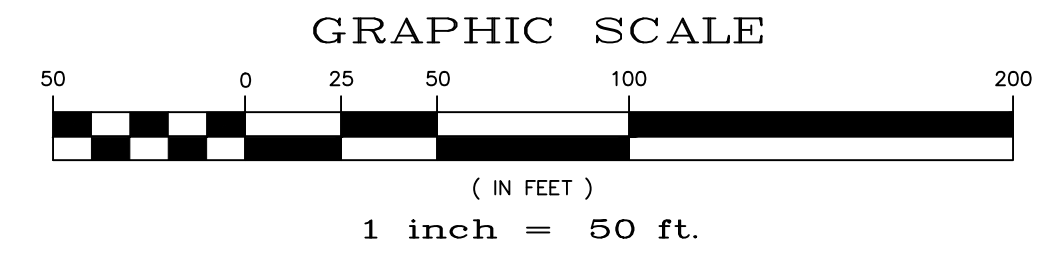


# ROLLING HILLS RANCH NORTH FILING NO. 1 AT MERIDIAN RANCH

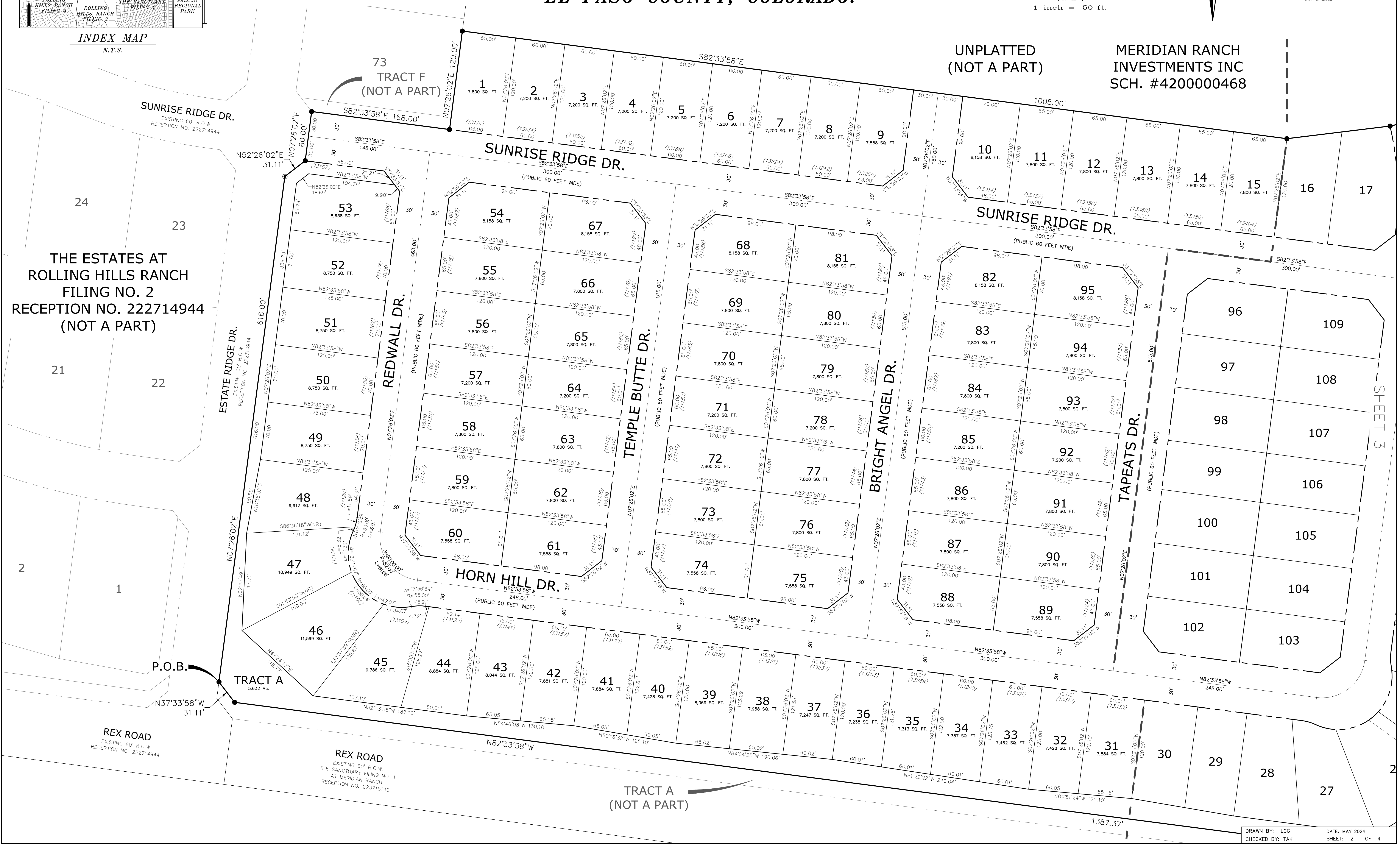
A PARCEL OF LAND LOCATED IN THE NORTH HALF OF SECTION 20, IN TOWNSHIP 12 SOUTH,  
RANGE 64 WEST OF THE 6TH PRINCIPAL MERIDIAN  
EL PASO COUNTY, COLORADO.



INDEX MAP  
N.T.S.

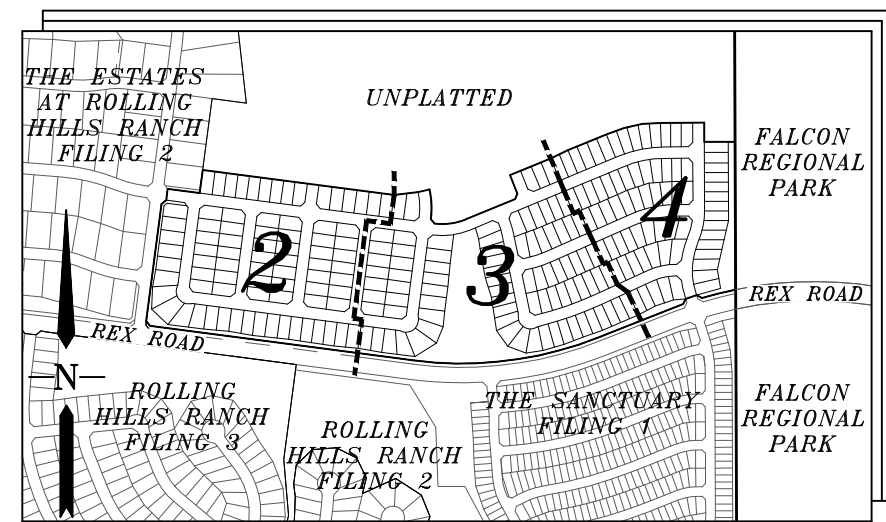


- LEGEND**
- = FOUND NAIL AND WASHER  
PLS 34583
  - = SET #4 REBAR W/CAP  
PLS 34583
  - NR = NON-RADIAL BEARING  
(82.62') = EASEMENT OR NO-BUILD DIM.  
(12.345) = ADDRESS
  - = MATCHLINE



# ROLLING HILLS RANCH NORTH FILING NO. 1 AT MERIDIAN RANCH

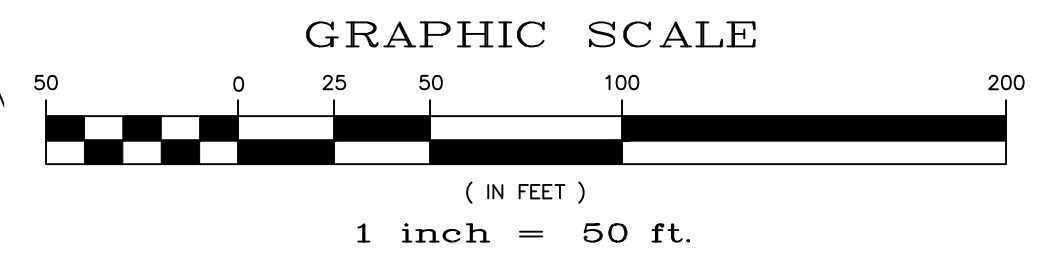
A PARCEL OF LAND LOCATED IN THE NORTH HALF OF SECTION 20, IN TOWNSHIP 12 SOUTH,  
RANGE 64 WEST OF THE 6TH PRINCIPAL MERIDIAN  
EL PASO COUNTY, COLORADO.



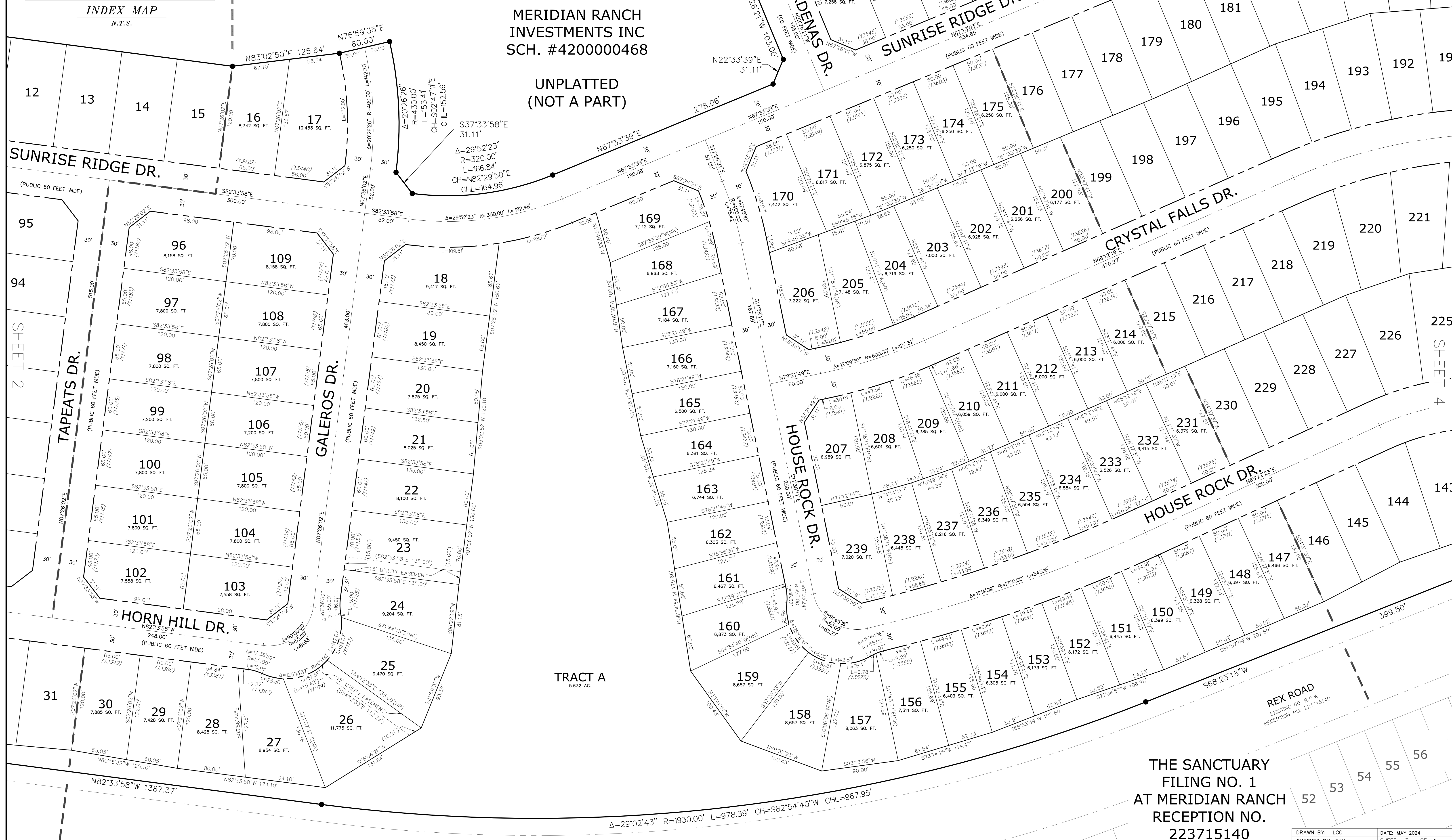
INDEX MAP  
N.T.S.

MERIDIAN RANCH INVESTMENTS INC  
SCH. #4200000468

UNPLATTED  
(NOT A PART)



- LEGEND
- - FOUND NAIL AND WASHER PLS 34583
  - - SET #4 REBAR W/CAP PLS 34583
  - NR - NON-RADIAL BEARING
  - (82.62) - EASEMENT OR NO-BUILD DIM.
  - (12.345) - ADDRESS
  - MATCHLINE

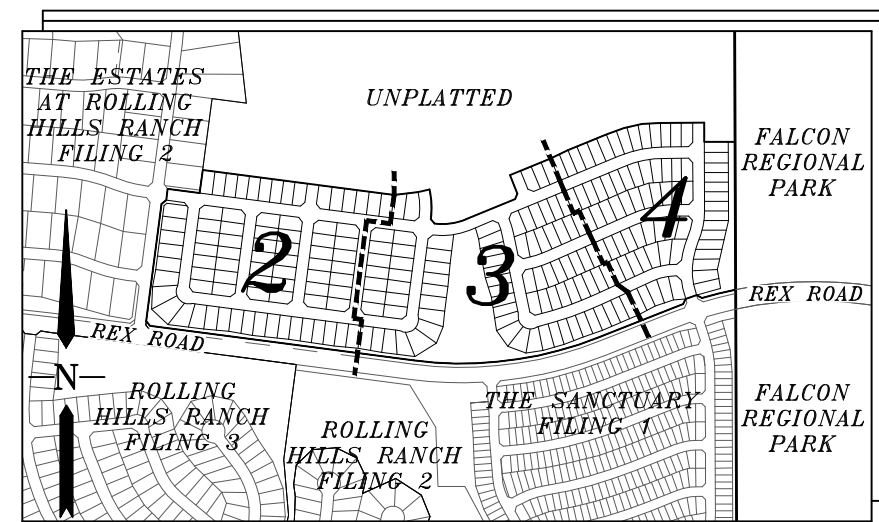


THE SANCTUARY  
FILING NO. 1  
AT MERIDIAN RANCH  
RECEPTION NO.  
223715140

DRAWN BY: LCC	DATE: MAY 2024
CHECKED BY: TAK	SHEET: 3 OF 4
PCD PROJECT NO. SF2411	

# ROLLING HILLS RANCH NORTH FILING NO. 1 AT MERIDIAN RANCH

A PARCEL OF LAND LOCATED IN THE NORTH HALF OF SECTION 20, IN TOWNSHIP 12 SOUTH,  
RANGE 64 WEST OF THE 6TH PRINCIPAL MERIDIAN  
**EL PASO COUNTY, COLORADO.**

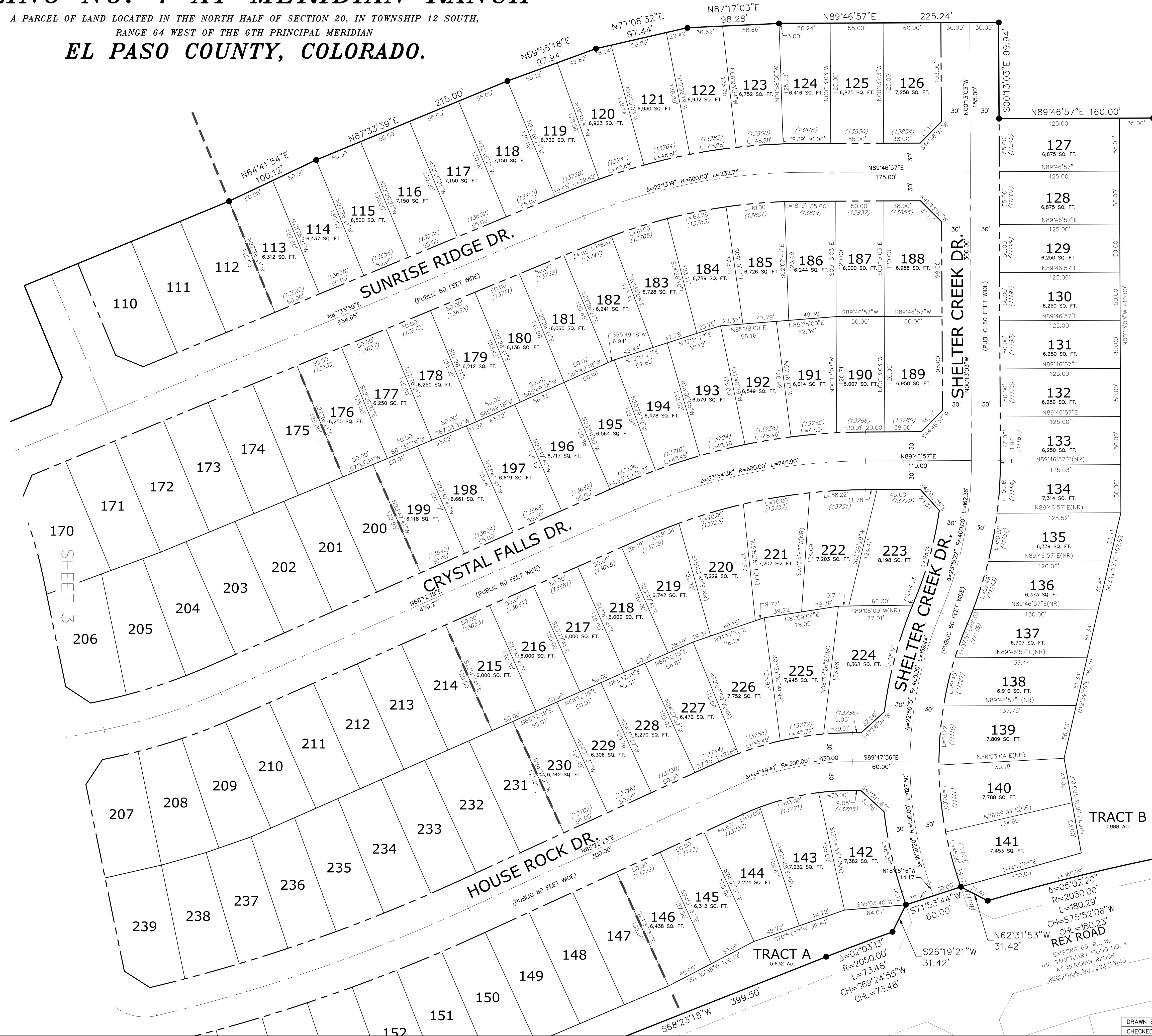
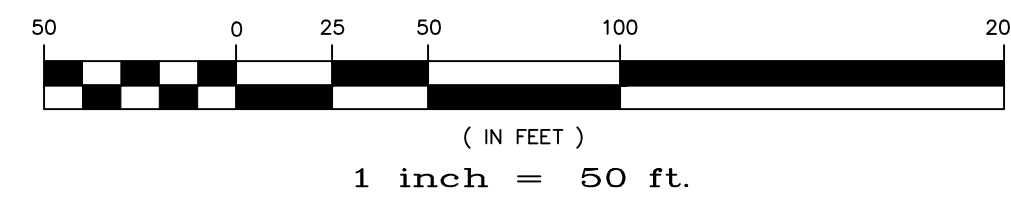


**INDEX MAP**  
N.T.S.

- LEGEND**
- = FOUND NAIL AND WASHER  
PLS 34583
  - = SET #4 REBAR W/CAP  
PLS 34583
  - NR = NON-RADIAL BEARING
  - (E2.62) = EASEMENT OR NO-BUILD DIM.
  - (12345) = ADDRESS
  - = MATCHLINE



**GRAPHIC SCALE**



S0013'03"E 769.32'

UNPLATTED

FALCON  
REGIONAL  
PARK  
RECEPTION NO.  
214096227  
(NOT A PART)

TRACT A  
5.632 Ac.  
TRACT B  
0.988 Ac.

EXISTING 60' R.O.W.  
THE SANCTUARY FILING NO. 1  
AT MERIDIAN RANCH  
RECEPTION NO. 223215140