

# TRAILS AT ASPEN RIDGE

EL PASO COUNTY, CO

## PRE-DEVELOPMENT GRADING & EROSION CONTROL PLAN

AUGUST, 2019



Know what's below.  
Call before you dig.

### TRAILS AT ASPEN RIDGE

EL PASO COUNTY, COLORADO  
**PRE-DEVELOPMENT GRADING &  
EROSION CONTROL PLAN**

CONSULTANT:

PLANNER/ LANDSCAPE ARCHITECT:



2435 Research Parkway, Suite 300  
Colorado Springs, CO 80920  
Phone 719-575-0100  
Fax 719-575-0208

CIVIL ENGINEER:

Stantec  
5725 Mark Dabling Blvd, Suite 190  
Colorado Springs, CO 80919  
Phone 719-227-7388

PROJECT:

**TRAILS AT ASPEN RIDGE**

EL PASO COUNTY  
AUGUST, 2019

OWNER:

**COLA, LLC**  
555 MIDDLE CREEK PKWY, SUITE 380  
COLORADO SPRINGS, CO 80921  
(719) 382-9433

DEVELOPER:

**COLA, LLC**  
555 MIDDLE CREEK PKWY, SUITE 380  
COLORADO SPRINGS, CO 80921  
(719) 382-9433

ISSUE: SEPTEMBER, 2019

DRAWING INFORMATION:

PROJECT NO: 19.886.008

DRAWN BY: LUKE BONNER

CHECKED BY: NICOLE SCHANEL

APPROVED BY: NICOLE SCHANEL

SHEET TITLE:

**TITLE SHEET**

**TS01**

**SHEET 1 OF 8**

#### INDEX OF SHEETS

|             |                                | SHEET No. |
|-------------|--------------------------------|-----------|
| TS01        | TITLE SHEET                    | 1         |
| GEN01       | LEGEND & ABBREVIATION NOTES    | 2         |
| GN01        | GENERAL NOTES                  | 3         |
| GEC01-GEC03 | GRADING & EROSION CONTROL PLAN | 4 - 6     |
| ECN01-ECN02 | EROSION CONTROL DETAILS        | 7 - 8     |

THIS IS AN OVERLOT GRADING AND EROSION CONTROL PLAN ONLY. THIS PLAN DOES NOT REFLECT DETAILED/FINE GRADING ELEMENTS THAT WILL BE PART OF FINAL CONSTRUCTION DOCUMENTS FOR SITE DEVELOPMENT, PAVING OPERATIONS, PLACEMENT OF CURB & GUTTER, AND LANDSCAPING. BUILDING AND PARKING LOT LOCATIONS ARE PROVIDED FOR REFERENCE ONLY AND ARE SUBJECT TO CHANGE.

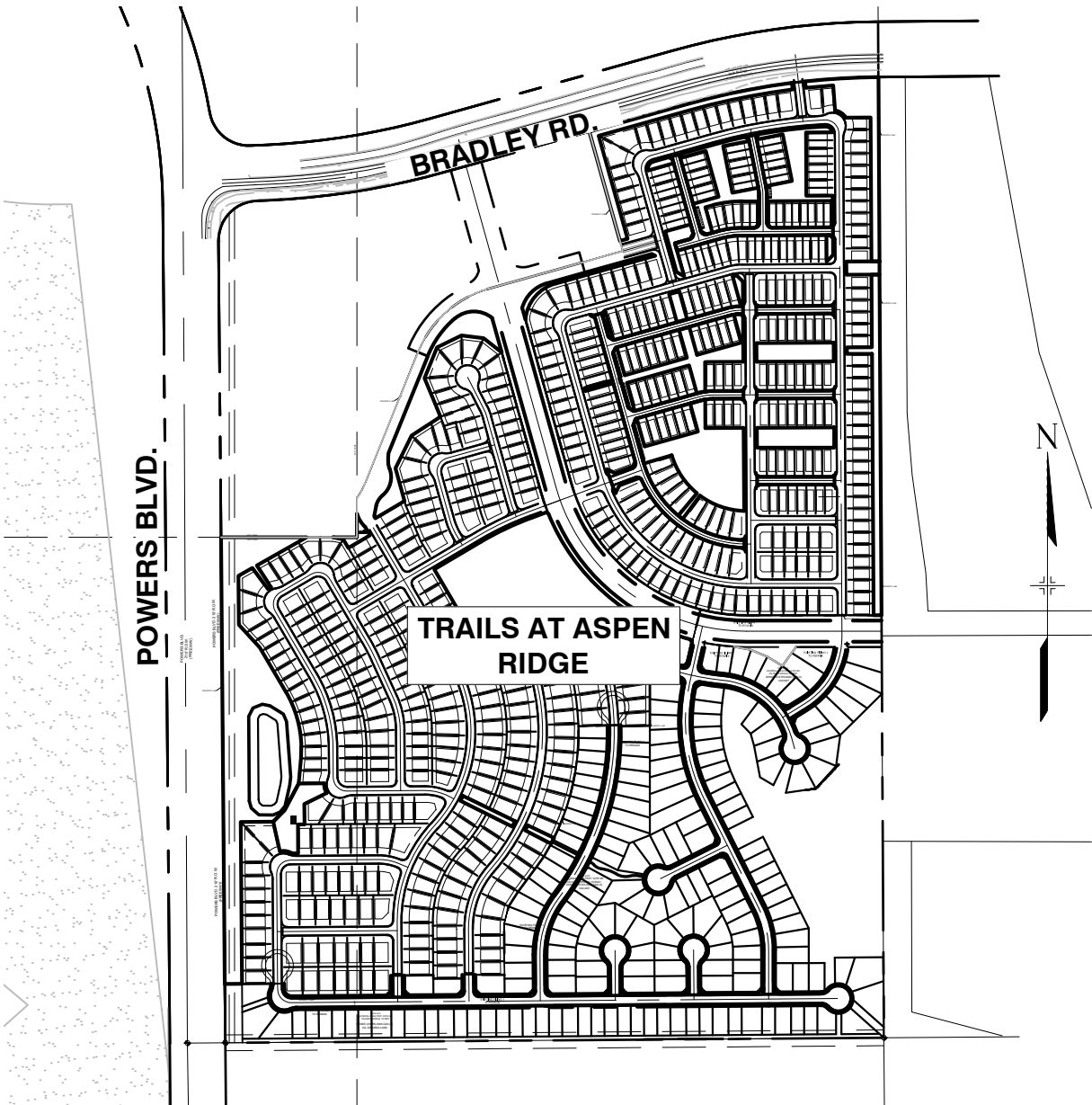
|                        |  |
|------------------------|--|
| OWNER/DEVELOPER        | COLA, LLC<br>555 MIDDLE CREEK PARKWAY, SUITE 380<br>COLORADO SPRINGS, CO 80921   |
| CIVIL ENGINEER         | MATRIX DESIGN GROUP<br>2435 RESEARCH PARKWAY, SUITE 300<br>COLORADO SPRINGS, CO 80920  |
| WATER & SANITARY SEWER | WIDEFIELD WATER AND SANITATION DISTRICT<br>8495 FONTAINE BOULEVARD<br>COLORADO SPRINGS, CO 80925<br>ROBERT BANNISTER, (719) 390-7111 |
| ELECTRIC               | MOUNTAINVIEW ELECTRIC ASSOCIATION<br>(719) 495-2283  |
| GAS                    | COLORADO SPRINGS UTILITIES<br>1521 HANCOCK EXPRESSWAY<br>COLORADO SPRINGS, CO<br>MARY HOAGLUND (719) 668-4083                        |
| STREET                 | EL PASO COUNTY PUBLIC SERVICES DEPARTMENT<br>(719) 520-6460  |
| DRAINAGE               | EL PASO COUNTY PUBLIC SERVICES DEPARTMENT<br>(719) 520-6460  |
| FIRE DEPARTMENT        | SECURITY FIRE DEPARTMENT<br>400 SECURITY BOULEVARD<br>SECURITY, CO 80911<br>(719) 392-7121   |

#### BENCHMARK

A COLORADO SPRINGS UTILITIES (FIMS) MONUMENT DESIGNATED "BG-14" BEING THE NORTH ANCHOR BOLT OF ELECTRIC TRANSMISSION TOWER #BGKC4 BEING THE THIRD TOWER NORTH OF THE ELECTRIC SUBSTATION NORTHWESTERLY OF POWERS BOULEVARD AND WOODMEN ROAD. HAVING A PUBLISHED ELEVATION OF 6861.21 FEET NGVD 1929.

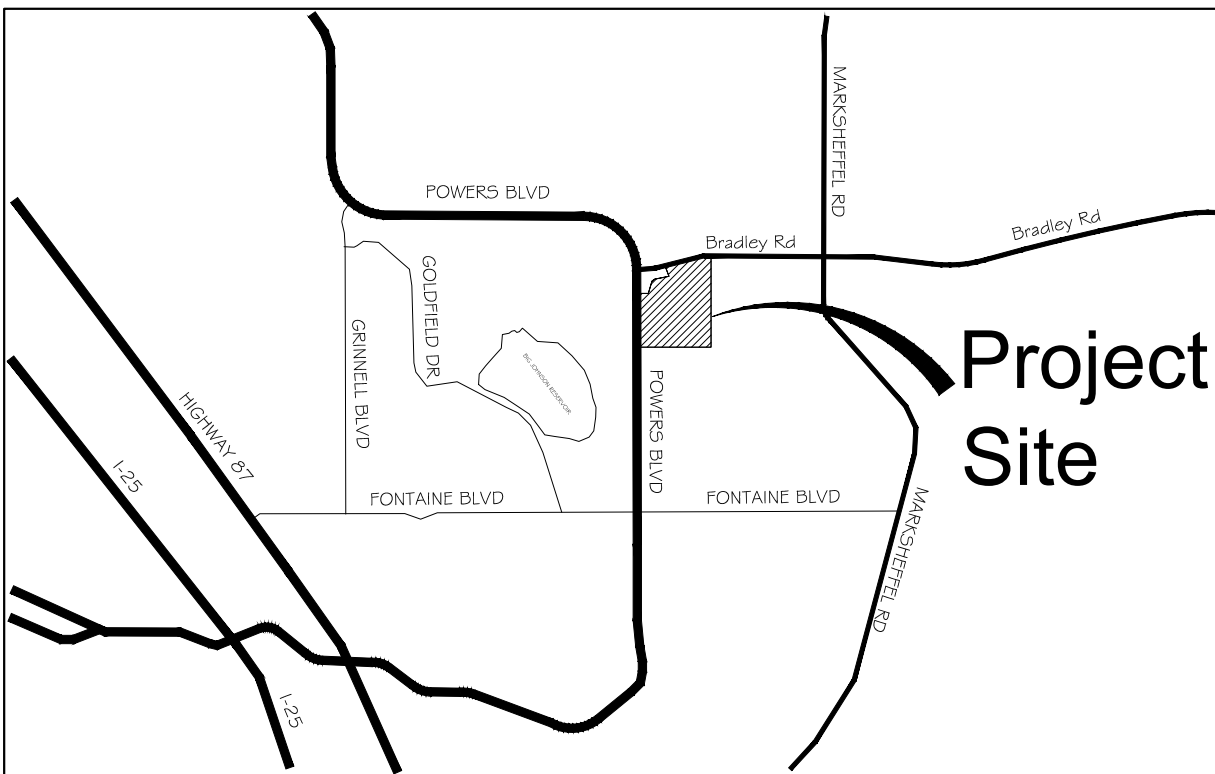
#### BASIS OF BEARING

THE BASIS OF BEARINGS FOR THIS MAP IS THE EAST LINE OF MARKSHEFFEL ROAD RIGHT-OF-WAY AS SHOWN ON THE PLAT OF SHILOH MESA FILING NO. 1 RECORDED ON MAY 19, 2016 IN THE OFFICE OF THE EL PASO COUNTY CLERK AND RECORDER UNDER RECEPTION NUMBER 216713770; MONUMENTED ON BOTH ENDS BY A FOUND REBAR AND 1" ORANGE PLASTIC CAP AND "PLS 38141"; BEARING NORTH 03°49'17" EAST 285.38 FEET.



#### SITE MAP

N.T.S.



#### VICINITY MAP

N.T.S.

#### OWNER'S STATEMENT:

THE OWNER WILL COMPLY WITH THE REQUIREMENTS OF THE GRADING AND EROSION CONTROL PLAN.

RANDY O'LEARY, PRESIDENT \_\_\_\_\_ DATE

#### ENGINEER'S STATEMENT:

THIS GRADING AND EROSION CONTROL PLAN WAS PREPARED UNDER MY DIRECTION AND SUPERVISION AND IS CORRECT TO THE BEST OF MY KNOWLEDGE AND BELIEF. SAID PLAN HAS BEEN PREPARED ACCORDING TO THE CRITERIA ESTABLISHED BY THE COUNTY FOR GRADING AND EROSION CONTROL PLANS. I ACCEPT RESPONSIBILITY FOR ANY LIABILITY CAUSED BY ANY NEGLIGENT ACTS, ERRORS OR OMISSIONS ON MY PART IN PREPARING THIS REPORT.

NICOLE SCHANEL, PE #52434 \_\_\_\_\_ DATE

#### EL PASO COUNTY:

COUNTY PLAN REVIEW IS PROVIDED ONLY FOR GENERAL CONFORMANCE WITH COUNTY DESIGN CRITERIA. THE COUNTY IS NOT RESPONSIBLE FOR THE ACCURACY AND ADEQUACY OF THE DESIGN, DIMENSIONS, AND/OR ELEVATIONS WHICH SHALL BE CONFIRMED AT THE JOB SITE. THE COUNTY THROUGH THE APPROVAL OF THIS DOCUMENT ASSUMES NO RESPONSIBILITY FOR COMPLETENESS AND/ OR ACCURACY OF THIS DOCUMENT.

FILED IN ACCORDANCE WITH THE REQUIREMENTS OF THE EL PASO COUNTY LAND DEVELOPMENT CODE, DRAINAGE CRITERIA MANUAL, VOLUMES 1 AND 2, AND ENGINEERING CRITERIA MANUAL AS AMENDED.

IN ACCORDANCE WITH ECM SECTION 1.12, THESE CONSTRUCTION DOCUMENTS WILL BE VALID FOR CONSTRUCTION FOR A PERIOD OF 2 YEARS FROM THE DATE SIGNED BY THE EL PASO COUNTY ENGINEER. IF CONSTRUCTION HAS NOT STARTED WITHIN THOSE 2 YEARS, THE PLANS WILL NEED TO BE RESUBMITTED FOR APPROVAL, INCLUDING PAYMENT OF REVIEW FEES AT THE PLANNING AND COMMUNITY DEVELOPMENT DIRECTORS DISCRETION.

JENNIFER IRVINE, P.E. \_\_\_\_\_ DATE  
COUNTY ENGINEER / ECM ADMINISTRATOR



ABBREVIATIONS

|             |   |           |   |
|-------------|---|-----------|---|
| ASSY        | ASSEMBLY                                  | MAX       | MAXIMUM                                       |
| ASTM        | AMERICAN SOCIETY OF TESTING AND MATERIALS | MH        | MANHOLE                                       |
| APPROX      | APPROXIMATE or APPROXIMATELY              | MIN       | MINIMUM                                       |
| AVE         | AVENUE                                    | MJ        | MECHANICAL JOINT                              |
| AVG         | AVERAGE                                   | NTS       | NOT TO SCALE                                  |
| BLVD        | BOULEVARD                                 | O/S       | OFFSET  |
| BTM         | BOTTOM                                    | PR        | PROPOSED                                      |
| CDOT        | COLORADO DEPARTMENT OF TRANSPORTATION     | PC        | POINT OF CURVATURE                            |
| CEN         | CENTER                                    | PCC       | POINT OF COMPOUND CURVE                       |
| C or CL     | CENTERLINE                                | PCR       | POINT OF CURB RETURN                          |
| CFS         | CUBIC FEET PER SECOND                     | P or P/L  | PROPERTY LINE                                 |
| CONC        | CONCRETE                                  | PRC       | POINT OF REVERSE CURVE                        |
| CONST       | CONSTRUCTION                              | PT        | POINT OF TANGENCY                             |
| CONT        | CONTINUOUS                                | PVC       | POINT OF VERTICAL CURVE or POLYVINYL CHLORIDE |
| DIA         | DIAMETER                                  | PVI       | POINT OF VERTICAL INTERSECTION                |
| DWG         | DRAWING                                   | PVMT      | PAVEMENT                                      |
| EA          | EACH                                      | PVT       | POINT OF VERTICAL TANGENT                     |
| EGL         | ENERGY GRADE LINE                         | RCP       | REINFORCED CONCRETE PIPE                      |
| ELEV or EL  | ELEVATION                                 | RED       | REDUCER                                       |
| ESMT        | EASEMENT                                  | REF       | REFERENCE                                     |
| EX or EXIST | EXISTING                                  | REQ       | REQUIRED                                      |
| FES         | FLARED END SECTION                        | REV       | REVISION                                      |
| F or FL     | FLOWLINE                                  | ROW       | RIGHT-OF-WAY                                  |
| FLG         | FLANGE                                    | RT        | RIGHT   |
| FT          | FOOT/FEET                                 | SD        | STORM SEWER                                   |
| HGL         | HYDRAULIC GRADE LINE                      | ST        | STREET  |
| HP          | HIGH POINT                                | STA       | STATION                                       |
| HORIZ       | HORIZONTAL                                | STD       | STANDARD                                      |
| HCL         | HORIZONTAL CONTROL LINE                   | SS        | SANITARY SEWER                                |
| INV         | INVERT                                    | SW or S/W | SIDEWALK                                      |
|             | VERTICAL CURVE FACTOR                     | TAN       | TANGENT                                       |
| LF          | LINEAR FEET                               | TBC       | TOP BACK OF CURB                              |
| LN          | LANE                                      | TYP       | TYPICAL                                       |
| LP          | LOW POINT                                 | UG        | UNDERGROUND                                   |
| LT          | LEFT                                      | UTIL      | UTILITY                                       |
|             |   | VERT      | VERTICAL                                      |
|             |   | W         | WIDTH   |
|             |   | w/        | WITH  |

SYMBOLS

|  |                              |  |                            |
|--|------------------------------|--|----------------------------|
|  | PROPOSED CENTERLINE          |  | PROPOSED MANHOLE           |
|  | EXISTING PAVED ROAD          |  | EXISTING POWER POLE        |
|  | EXISTING UNDERGROUND UTILITY |  | THRUST BLOCK               |
|  | PROPOSED UNDERGROUND UTILITY |  | FIRE HYDRANT               |
|  | RIGHT OF WAY                 |  | EXISTING WATER VALVE       |
|  | EASEMENT                     |  | PROPOSED WATER VALVE       |
|  | EXISTING CURB & GUTTER       |  | WATER FITTINGS             |
|  | PROPOSED CURB & GUTTER       |  | EXISTING STORM INLET       |
|  | EXISTING CONTOUR             |  | PROPOSED STORM DRAIN/INLET |
|  | PROPOSED CONTOUR             |  | PLUG PIPE                  |
|  | LIMITS OF CONSTRUCTION       |  | PROPOSED SIGN              |
|  |                              |  | EXISTING SIGN              |



TRAILS AT ASPEN RIDGE

EL PASO COUNTY, COLORADO  
**PRE-DEVELOPMENT GRADING & EROSION CONTROL PLAN**

CONSULTANT:

PLANNER/ LANDSCAPE ARCHITECT:



2435 Research Parkway, Suite 300  
Colorado Springs, CO 80920  
Phone 719-575-0100  
Fax 719-575-0208

CIVIL ENGINEER:

Stantec  
5725 Mark Dabling Blvd, Suite 190  
Colorado Springs, CO 80919  
Phone 719-227-7388

PROJECT:

TRAILS AT ASPEN RIDGE

EL PASO COUNTY  
AUGUST, 2019

OWNER:

COLA, LLC  
555 MIDDLE CREEK PKWY, SUITE 380  
COLORADO SPRINGS, CO 80921  
(719) 382-9433

DEVELOPER:

COLA, LLC  
555 MIDDLE CREEK PKWY, SUITE 380  
COLORADO SPRINGS, CO 80921  
(719) 382-9433

ISSUE: SEPTEMBER, 2019

DRAWING INFORMATION:

PROJECT NO: 19.886.008

DRAWN BY: LUKE BONNER

CHECKED BY: NICOLE SCHANEL

APPROVED BY: NICOLE SCHANEL

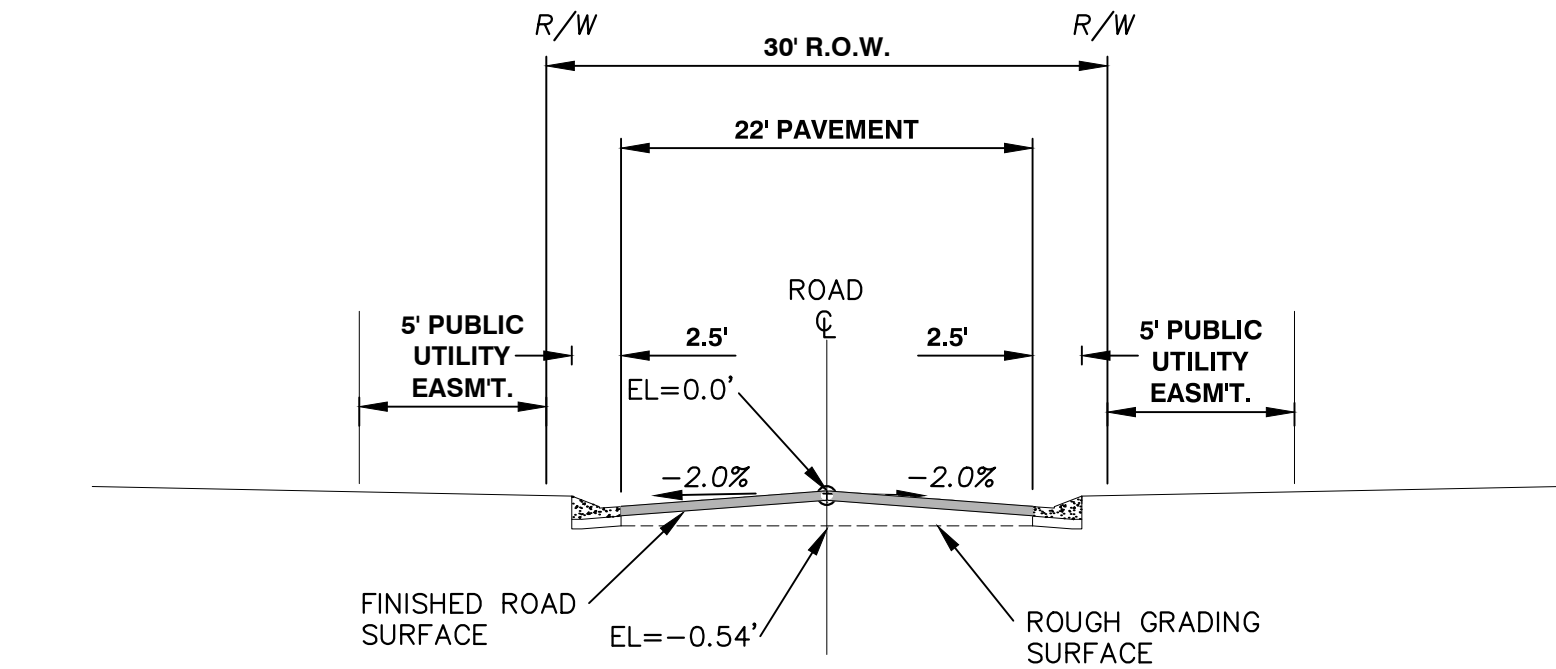
SHEET TITLE:

LEGEND &  
ABBREVIATION  
NOTES

GEN01

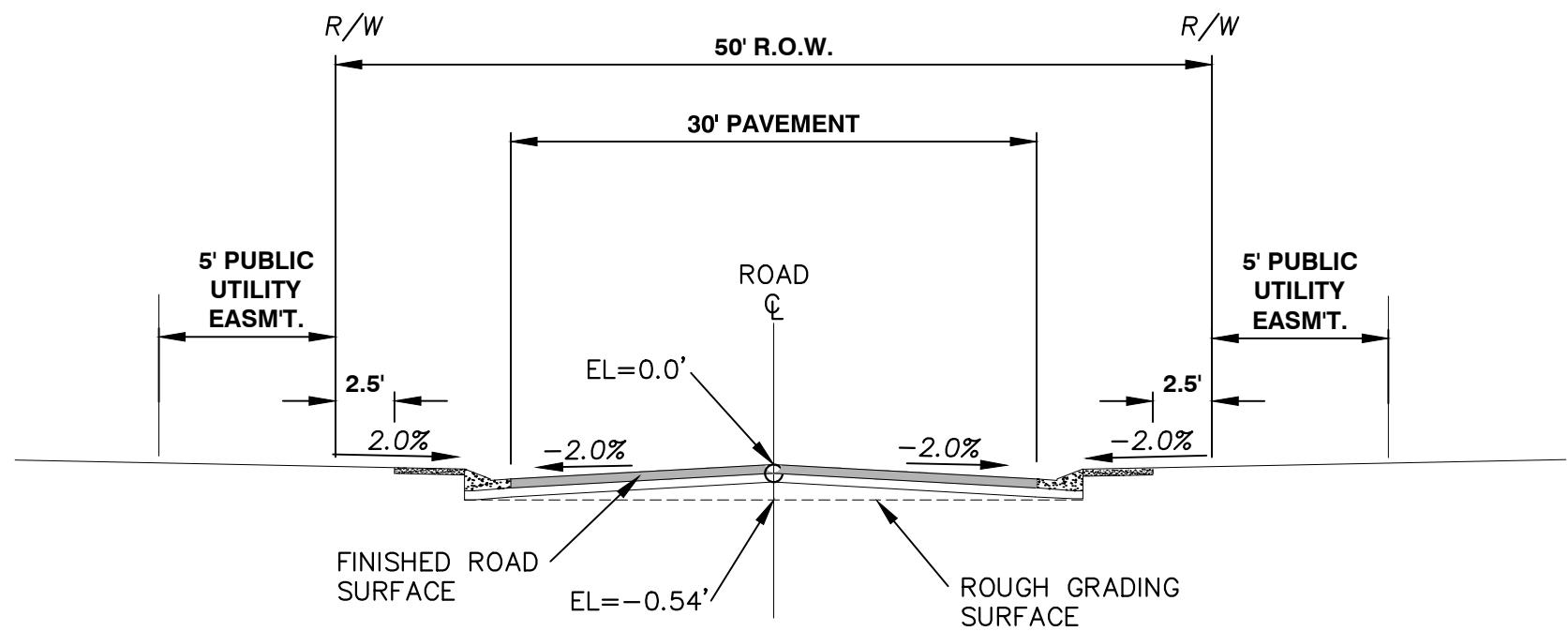
SHEET 2 OF 8

PCD FILE: PUDSP-191



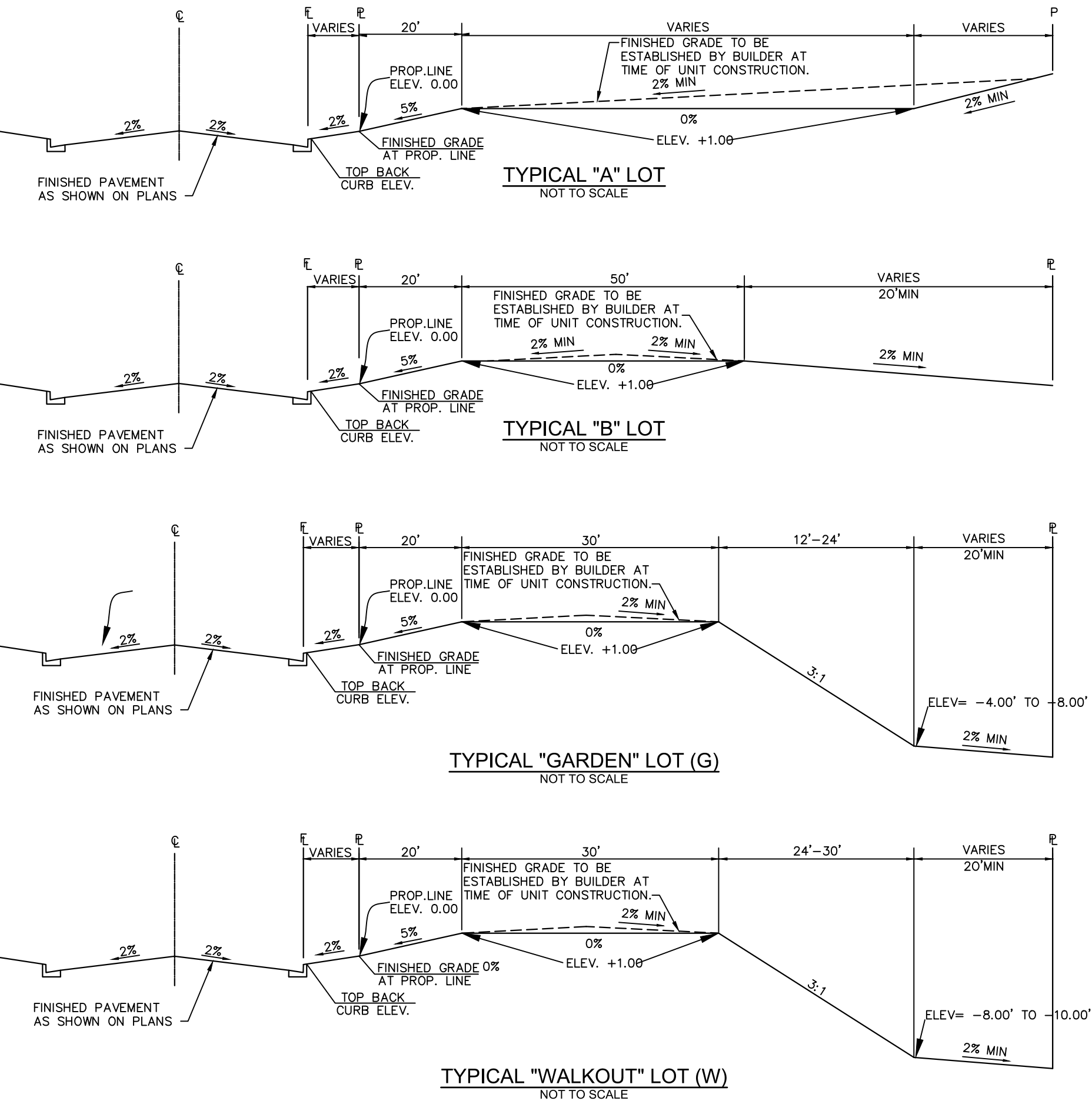
TYPICAL SECTION  
(PRIVATE ROADWAY)

SCALE : N.T.S.



TYPICAL SECTION  
(URBAN LOCAL ROADWAY)

SCALE : N.T.S.





STANDARD NOTES FOR EL PASO COUNTY GRADING & EROSION CONTROL PLANS:

1. STORMWATER DISCHARGES FROM CONSTRUCTION SITES SHALL NOT CAUSE OR THREATEN TO CAUSE POLLUTION, CONTAMINATION, OR DEGRADATION OF STATE WATERS. ALL WORK AND EARTH DISTURBANCE SHALL BE DONE IN A MANNER THAT MINIMIZES POLLUTION OF ANY ON-SITE OR OFF SITE WATERS, INCLUDING WETLANDS.
2. NOTWITHSTANDING ANYTHING DEPICTED IN THESE PLANS IN WORDS OR GRAPHIC REPRESENTATION, ALL EROSION AND CONSTRUCTION RELATED TO ROADS, STORM DRAINAGE AND EROSION CONTROL SHALL CONFORM TO THE STANDARDS AND REQUIREMENTS OF THE MOST RECENT VERSION OF THE RELEVANT ADOPTED EL PASO COUNTY STANDARDS, INCLUDING THE LAND DEVELOPMENT CODE, THE ENGINEERING CRITERIA MANUAL, THE DRAINAGE CRITERIA MANUAL, AND THE DRAINAGE CRITERIA MANUAL VOLUME 2. ANY DEVIATIONS TO REGULATIONS AND STANDARDS MUST BE REQUESTED, AND APPROVED, IN WRITING.
3. A SEPARATE STORMWATER MANAGEMENT PLAN (SWMP) FOR THIS PROJECT SHALL BE COMPLETED AND AN EROSION AND STORMWATER QUALITY CONTROL PERMIT (ESQCP) ISSUED PRIOR TO COMMENCING CONSTRUCTION. DURING CONSTRUCTION THE SWMP IS THE RESPONSIBILITY OF THE DESIGNATED STORMWATER MANAGER, SHALL BE LOCATED ON SITE AT ALL TIMES AND SHALL BE KEPT UP TO DATE WITH WORK PROGRESS AND CHANGES IN THE FIELD.
4. ONCE THE ESQCP HAS BEEN ISSUED, THE CONTRACTOR MAY INSTALL THE INITIAL STAGE EROSION AND SEDIMENT CONTROL BMPS AS INDICATED ON THE GEC. A PRECONSTRUCTION MEETING BETWEEN THE CONTRACTOR, ENGINEER, AND EL PASO COUNTY WILL BE HELD PRIOR TO ANY CONSTRUCTION. IT IS THE RESPONSIBILITY OF THE APPLICANT TO COORDINATE THE MEETING TIME AND PLACE WITH COUNTY PCD INSPECTIONS STAFF.
5. CONTROL MEASURES MUST BE INSTALLED PRIOR TO COMMENCEMENT OF ACTIVITIES THAT COULD CONTRIBUTE POLLUTANTS TO STORMWATER. CONTROL MEASURES FOR ALL SLOPES, CHANNELS, DITCHES, AND DISTURBED LAND AREAS SHALL BE INSTALLED IMMEDIATELY UPON COMPLETION OF THE DISTURBANCE.
6. ALL TEMPORARY SEDIMENT AND EROSION CONTROL MEASURES SHALL BE MAINTAINED AND REMAIN IN EFFECTIVE OPERATING CONDITION UNTIL PERMANENT SOIL EROSION CONTROL MEASURES ARE IMPLEMENTED AND FINAL STABILIZATION IS ESTABLISHED. ALL PERSONS ENGAGED IN LAND DISTURBANCE ACTIVITIES SHALL ASSESS THE ADEQUACY OF CONTROL MEASURES AT THE SITE AND IDENTIFY IF CHANGES TO THOSE CONTROL MEASURES ARE NEEDED TO ENSURE THE CONTINUED EFFECTIVE PERFORMANCE OF THE CONTROL MEASURES. ALL CHANGES TO TEMPORARY SEDIMENT AND EROSION CONTROL MEASURES MUST BE INCORPORATED INTO THE STORMWATER MANAGEMENT PLAN.
7. TEMPORARY STABILIZATION SHALL BE IMPLEMENTED ON DISTURBED AREAS AND STOCKPILES WHERE GROUND DISTURBING CONSTRUCTION ACTIVITY HAS PERMANENTLY CEASED OR TEMPORARILY CEASED FOR LONGER THAN 14 DAYS.
8. FINAL STABILIZATION MUST BE IMPLEMENTED AT ALL APPLICABLE CONSTRUCTION SITES. FINAL STABILIZATION IS ACHIEVED WHEN ALL GROUND DISTURBING ACTIVITIES ARE COMPLETE AND ALL DISTURBED AREAS EITHER HAVE A UNIFORM VEGETATIVE COVER WITH INDIVIDUAL PLANT DENSITY OF 70 PERCENT OF PRE-DISTURBANCE LEVELS ESTABLISHED OR EQUIVALENT PERMANENT ALTERNATIVE STABILIZATION METHOD IS IMPLEMENTED. ALL TEMPORARY SEDIMENT AND EROSION CONTROL MEASURES SHALL BE REMOVED UPON FINAL STABILIZATION AND BEFORE PERMIT CLOSURE.
9. ALL PERMANENT STORMWATER MANAGEMENT FACILITIES SHALL BE INSTALLED AS DESIGNED IN THE APPROVED PLANS. ANY PROPOSED CHANGES THAT EFFECT THE DESIGN OR FUNCTION OF PERMANENT STORMWATER MANAGEMENT STRUCTURES MUST BE APPROVED BY THE ECM ADMINISTRATOR PRIOR TO IMPLEMENTATION.
10. EARTH DISTURBANCES SHALL BE CONDUCTED IN SUCH A MANNER SO AS TO EFFECTIVELY MINIMIZE ACCELERATED SOIL EROSION AND RESULTING SEDIMENTATION. ALL DISTURBANCES SHALL BE DESIGNED, CONSTRUCTED, AND COMPLETED SO THAT THE EXPOSED AREA OF ANY DISTURBED LAND SHALL BE LIMITED TO THE SHORTEST PRACTICAL PERIOD OF TIME. PRE-EXISTING VEGETATION SHALL BE PROTECTED AND MAINTAINED WITHIN 50 HORIZONTAL FEET OF A WATERS OF THE STATE UNLESS SHOWN TO BE INFEASIBLE AND SPECIFICALLY REQUESTED AND APPROVED.
11. COMPACTION OF SOIL MUST BE PREVENTED IN AREAS DESIGNATED FOR INFILTRATION CONTROL MEASURES OR WHERE FINAL STABILIZATION WILL BE ACHIEVED BY VEGETATIVE COVER. AREAS DESIGNATED FOR INFILTRATION CONTROL MEASURES SHALL ALSO BE PROTECTED FROM SEDIMENTATION DURING CONSTRUCTION UNTIL FINAL STABILIZATION IS ACHIEVED. IF COMPACTION PREVENTION IS NOT FEASIBLE DUE TO SITE CONSTRAINTS, ALL AREAS DESIGNATED FOR INFILTRATION AND VEGETATION CONTROL MEASURES MUST BE LOOSENED PRIOR TO INSTALLATION OF THE CONTROL MEASURE(S).
12. ANY TEMPORARY OR PERMANENT FACILITY DESIGNED AND CONSTRUCTED FOR THE CONVEYANCE OF STORMWATER AROUND, THROUGH, OR FROM THE EARTH DISTURBANCE AREA SHALL BE A STABILIZED CONVEYANCE DESIGNED TO MINIMIZE EROSION AND THE DISCHARGE OF SEDIMENT OFF SITE.
13. CONCRETE WASH WATER SHALL BE CONTAINED AND DISPOSED OF IN ACCORDANCE WITH THE SWMP. NO WASH WATER SHALL BE DISCHARGED TO OR ALLOWED TO RUNOFF TO STATE WATERS, INCLUDING ANY SURFACE OR SUBSURFACE STORM DRAINAGE SYSTEM OR FACILITIES.
14. DURING DEWATERING OPERATIONS OF UNCONTAMINATED GROUND WATER MAY BE DISCHARGED ON SITE, BUT SHALL NOT LEAVE THE SITE IN THE FORM OF SURFACE RUNOFF UNLESS AN APPROVED STATE DEWATERING PERMIT IS IN PLACE.
15. EROSION CONTROL BLANKETING IS TO BE USED ON SLOPES STEEPER THAN 3:1.
16. CONTRACTOR SHALL BE RESPONSIBLE FOR THE REMOVAL OF ALL WASTES FROM THE CONSTRUCTION SITE FOR DISPOSAL IN ACCORDANCE WITH LOCAL AND STATE REGULATORY REQUIREMENTS. NO CONSTRUCTION DEBRIS, TREE SLASH, BUILDING MATERIAL WASTES OR UNUSED BUILDING MATERIALS SHALL BE BURIED, DUMPED, OR DISCHARGED AT THE SITE.
17. WASTE MATERIALS SHALL NOT BE TEMPORARILY PLACED OR STORED IN THE STREET, ALLEY, OR OTHER PUBLIC WAY, UNLESS IN ACCORDANCE WITH AN APPROVED TRAFFIC CONTROL PLAN. CONTROL MEASURES MAY BE REQUIRED BY EL PASO COUNTY ENGINEERING IF DEEMED NECESSARY, BASED ON SPECIFIC CONDITIONS AND CIRCUMSTANCES.
18. TRACKING OF SOILS AND CONSTRUCTION DEBRIS OFF-SITE SHALL BE MINIMIZED. MATERIALS TRACKED OFF-SITE SHALL BE CLEANED UP AND PROPERLY DISPOSED OF IMMEDIATELY.
19. THE OWNER/DEVELOPER SHALL BE RESPONSIBLE FOR THE REMOVAL OF ALL CONSTRUCTION DEBRIS, DIRT, TRASH, ROCK, SEDIMENT, SOIL, AND SAND THAT MAY ACCUMULATE IN ROADS, STORM DRAINS AND OTHER DRAINAGE CONVEYANCE SYSTEMS AND STORMWATER APPURTENANCES AS A RESULT OF SITE DEVELOPMENT.

STANDARD NOTES FOR EL PASO COUNTY GRADING & EROSION CONTROL PLANS (CONT.):

20. THE QUANTITY OF MATERIALS STORED ON THE PROJECT SITE SHALL BE LIMITED, AS MUCH AS PRACTICAL, TO THAT QUANTITY REQUIRED TO PERFORM THE WORK IN AN ORDERLY SEQUENCE. ALL MATERIALS STORED ON-SITE SHALL BE STORED IN A NEAT, ORDERLY MANNER, IN THEIR ORIGINAL CONTAINERS, WITH ORIGINAL MANUFACTURER'S LABELS.
21. NO CHEMICAL(S) HAVING THE POTENTIAL TO BE RELEASED IN STORMWATER ARE TO BE STORED OR USED ONSITE UNLESS PERMISSION FOR THE USE OF SUCH CHEMICAL(S) IS GRANTED IN WRITING BY THE ECM ADMINISTRATOR. IN GRANTING APPROVAL FOR THE USE OF SUCH CHEMICAL(S), SPECIAL CONDITIONS AND MONITORING MAY BE REQUIRED.
22. BULK STORAGE OF ALLOWED PETROLEUM PRODUCTS OR OTHER ALLOWED LIQUID CHEMICALS IN EXCESS OF 55 GALLONS SHALL REQUIRE ADEQUATE SECONDARY CONTAINMENT PROTECTION TO CONTAIN ALL SPILLS ONSITE AND TO PREVENT ANY SPILLED MATERIALS FROM ENTERING STATE WATERS, ANY SURFACE OR SUBSURFACE STORM DRAINAGE SYSTEM OR OTHER FACILITIES.
23. NO PERSON SHALL CAUSE THE IMPEDIMENT OF STORMWATER FLOW IN THE CURB AND GUTTER OR DITCH EXCEPT WITH APPROVED SEDIMENT CONTROL MEASURES.
24. OWNER/DEVELOPER AND THEIR AGENTS SHALL COMPLY WITH THE "COLORADO WATER QUALITY CONTROL ACT" (TITLE 25, ARTICLE 8, CRS), AND THE "CLEAN WATER ACT" (33 USC 1344), IN ADDITION TO THE REQUIREMENTS OF THE LAND DEVELOPMENT CODE, DCM VOLUME II AND THE ECM APPENDIX I. ALL APPROPRIATE PERMITS MUST BE OBTAINED BY THE CONTRACTOR PRIOR TO CONSTRUCTION (1041, NPDES, FLOODPLAIN, 404, FUGITIVE DUST, ETC.). IN THE EVENT OF CONFLICTS BETWEEN THESE REQUIREMENTS AND OTHER LAWS, RULES, OR REGULATIONS OF OTHER FEDERAL, STATE, LOCAL, OR COUNTY AGENCIES, THE MOST ESTRICTIVE LAWS, RULES, OR REGULATIONS SHALL APPLY.
25. ALL CONSTRUCTION TRAFFIC MUST ENTER/EXIT THE SITE ONLY AT APPROVED CONSTRUCTION ACCESS POINTS.
26. PRIOR TO CONSTRUCTION THE PERMITTEE SHALL VERIFY THE LOCATION OF EXISTING UTILITIES.
27. A WATER SOURCE SHALL BE AVAILABLE ON SITE DURING EARTHWORK OPERATIONS AND SHALL BE UTILIZED AS EQUIURED TO MINIMIZE DUST FROM EARTHWORK EQUIPMENT AND WIND.
28. THE SOILS REPORT FOR THIS SITE HAS BEEN PREPARED BY ENTECH ENGINEERING, INC. DATED APRIL, 2019 AND SHALL BE CONSIDERED A PART OF THESE PLANS.
29. AT LEAST TEN DAYS PRIOR TO THE ANTICIPATED START OF CONSTRUCTION, FOR PROJECTS THAT WILL DISTURB 1 ACRE OR MORE, THE OWNER OR OPERATOR OF CONSTRUCTION ACTIVITY SHALL SUBMIT A PERMIT APPLICATION FOR STORMWATER DISCHARGE TO THE COLORADO DEPARTMENT OF PUBLIC HEALTH AND ENVIRONMENT, WATER QUALITY DIVISION. THE APPLICATION CONTAINS CERTIFICATION OF COMPLETION OF A STORMWATER MANAGEMENT PLAN (SWMP), OF WHICH THIS GRADING AND EROSION CONTROL PLAN MAY BE A PART. FOR INFORMATION OR APPLICATION MATERIALS CONTACT:

COLORADO DEPARTMENT OF PUBLIC HEALTH AND ENVIRONMENT  
WATER QUALITY CONTROL DIVISION  
WQCD - PERMITS  
4300 CHERRY CREEK DRIVE SOUTH  
DENVER, CO 80246-1530  
ATTN: PERMITS UNIT

NRCS SOIL SURVEY FOR EL PASO COUNTY

| SOIL ID NO. | SOIL TYPE  | HYDROLOGIC CLASSIFICATION |
|-------------|--|---------------------------|
| 8           | BLAKELAND LOAMY SAND<br>(1%-9% SLOPES)           | A                         |
| 52          | MANZANST CLAY LOAM<br>(0%-3% SLOPES)             | C                         |
| 56          | NELSON-TASSEL FINE SANDY LOAM<br>(3%-18% SLOPES) | B                         |
| 86          | STONEHAM SANDY LOAM<br>(3%-8% SLOPES)            | B                         |
| 108         | WILEY SILT LOAM<br>(3%-9% SLOPES)                | B                         |

TIMING

ANTICIPATED STARTING AND COMPLETION TIME PERIOD OF SITE GRADING:  
SEPTEMBER 2019 THRU SEPTEMBER 2020

EXPECTED DATE ON WHICH THE FINAL STABILIZATION WILL BE COMPLETED:  
SEPTEMBER 2020

AREAS

TOTAL AREA: 166.88 ACRES

RECEIVING WATERS

NAME OF RECEIVING WATERS  
FOUNTAIN CREEK (ULTIMATE)



Know what's below.  
Call before you dig.

NPDES NOTES:

1. THE CONTRACTOR SHALL REMOVE ALL SEDIMENT, MUD, AND CONSTRUCTION DEBRIS THAT MAY ACCUMULATE IN THE FLOWLINES AND PUBLIC RIGHTS OF WAYS AS A RESULT OF THIS CONSTRUCTION PROJECT. SAID REMOVAL SHALL BE CONDUCTED IN A TIMELY MANNER, OR AS DIRECTED BY THE ENGINEER.
2. THIS CONSTRUCTION ACTIVITIES STORMWATER MANAGEMENT PLAN (SWMP) HAS BEEN SUBMITTED AS PART OF AN APPLICATION FOR AN EROSION AND SEDIMENT CONTROL PERMIT FILED WITH THE CITY OF COLORADO SPRINGS AND AS INCLUSION BY REFERENCE TO THE CDPHE CONSTRUCTION ACTIVITY PERMIT. THE SWMP IS A LIVING DOCUMENT AND ADDITIONAL EROSION AND SEDIMENT CONTROL MEASURES MAY BE REQUIRED OF THE CONTRACTOR DUE TO UNFORESEEN EROSION PROBLEMS OR IF THE SUBMITTED PLAN DOES NOT FUNCTION AS INTENDED. THE REQUIREMENTS OF THIS PLAN SHALL BE THE OBLIGATION OF THE LAND OWNER AND/OR HIS SUCCESSORS OR HEIRS; UNTIL SUCH TIME AS THE PLAN IS PROPERLY COMPLETED, MODIFIED, OR VOIDED.
3. THE CONTRACTOR SHALL BE HELD RESPONSIBLE FOR REMEDIATION OF ANY ADVERSE IMPACTS TO ADJACENT WATERWAYS, WETLANDS, ETC., RESULTING FROM WORK DONE AS PART OF THIS PROJECT.
4. THE CONTRACTOR SHALL PREVENT SEDIMENT, DEBRIS AND ALL OTHER POLLUTANTS FROM ENTERING THE STORM SEWER SYSTEM DURING ALL DEMOLITION, EXCAVATION, TRENCHING, BORING, GRADING OR OTHER CONSTRUCTION OPERATIONS THAT ARE PART OF THIS PROJECT.
5. A LAYER OF SUITABLE MULCH SHALL BE APPLIED TO ALL DISTURBED PORTIONS OF THE SITE WITHIN 21 DAYS OF THE COMPLETION OF GRADING. SAID MULCH SHALL BE APPLIED AT A RATE OF 2 TONS PER ACRE AND SHALL BE TACKED OR FASTENED BY AN APPROVED METHOD SUITABLE FOR THE TYPE OF MULCH USED. ROUGH-CUT STREETS SHALL BE MULCHED UNLESS A LAYER OF AGGREGATE ROAD BASE OR ASPHALT PAVING IS TO BE APPLIED TO SAID ROUGH-CUT STREETS WITHIN THE 21 DAY PERIOD AFTER COMPLETION OF OVERLOT GRADING. AN AREA THAT IS GOING TO REMAIN IN AN INTERIM STATE FOR MORE THEN SIXTY (60) DAYS SHALL ALSO BE SEEDED. ALL TEMPORARY SOIL EROSION CONTROL MEASURES AND BMP'S SHALL BE MAINTAINED UNTIL PERMANENT SOIL EROSION CONTROL MEASURES ARE IMPLEMENTED.
6. THE CONTRACTOR SHALL LOCATE, INSTALL, AND MAINTAIN ALL EROSION CONTROL AND WATER QUALITY "BEST MANAGEMENT PRACTICES" AS INDICATED IN THE APPROVED CONSTRUCTION ACTIVITIES STORMWATER MANAGEMENT PLAN. BMP'S SHALL BE MAINTAINED AND KEPT IN GOOD REPAIR FOR THE DURATION OF THIS PROJECT.
7. AT A MINIMUM, THE CONTRACTOR SHALL INSPECT, AND KEEP A LOG OF, ALL BMP'S WEEKLY AND AFTER SIGNIFICANT PRECIPITATION EVENTS. ALL NECESSARY MAINTENANCE AND REPAIR SHALL BE COMPLETED IN A TIMELY MANNER. ACCUMULATED SEDIMENT AND DEBRIS SHALL BE REMOVED FROM A BMP WHEN THE SEDIMENT LEVEL REACHES ONE-HALF THE HEIGHT OF THE BMP, OR, AT ANY TIME THAT SEDIMENT OR DEBRIS ADVERSELY IMPACTS THE FUNCTIONING OF THE BMP.
8. THE CONTRACTOR SHALL PROPERLY COVER ALL LOADS OF CUT AND FILL MATERIAL IMPORTED TO OR EXPORTED FROM THIS SITE TO PREVENT LOSS OF THE MATERIAL DURING TRANSPORT WITHIN PUBLIC RIGHTS OF WAY.
9. THE USE OF REBAR, STEEL STAKES, OR STEEL FENCE POSTS TO STAKE DOWN STRAW OR HAY BALES; OR TO SUPPORT SILT FENCING USED AS AN EROSION CONTROL MEASURE; IS PROHIBITED. THE USE OF OSHA APPROVED COLORED WARNING CAPS ON REBAR OR FENCE POSTS USED WITH EROSION CONTROL MEASURES IS NOT ACCEPTABLE.
10. SOILS THAT WILL BE STOCKPILED FOR MORE THAN 30 DAYS SHALL BE MULCHED AND SEEDED WITH A TEMPORARY OR PERMANENT GRASS COVER WITHIN 21 DAYS OF STOCKPILE CONSTRUCTION. IF STOCKPILES ARE LOCATED WITHIN 100 FEET OF A DRAINAGEWAY, ADDITIONAL SEDIMENT CONTROLS SUCH AS TEMPORARY DIKES OR SILT FENCE SHALL BE REQUIRED.
11. MODIFICATION OF AN ACTIVE EROSION AND SEDIMENT CONTROL PERMIT BY THE CONTRACTOR SHALL REQUIRE TIMELY NOTIFICATION OF AND APPROVAL BY THE CITY OF COLORADO SPRINGS. TERMINATION OF AN ACTIVE EROSION AND SEDIMENT CONTROL PERMIT UPON COMPLETION OF THE PROJECT REQUIRES NOTIFICATION OF AND APPROVAL BY THE CITY OF COLORADO SPRINGS.
12. UNLESS CONFINED IN A PREDEFINED, BERMED CONTAINMENT AREA, THE CLEANING OF CONCRETE TRUCK DELIVERY CHUTES IS PROHIBITED AT THE JOB SITE. THE DISCHARGE OF WATER CONTAINING WASTE CEMENT TO THE STORM SEWER SYSTEM IS PROHIBITED.
13. THE CONTRACTOR SHALL PROTECT ALL STORM SEWER FACILITIES ADJACENT TO ANY LOCATION WHERE PAVEMENT CUTTING OPERATIONS INVOLVING WHEEL CUTTING, SAW CUTTING OR ABRASIVE WATER JET CUTTING ARE TO TAKE PLACE. THE DISCHARGE OF ANY WATER CONTAMINATED BY WASTE PRODUCTS FROM CUTTING OPERATIONS TO THE STORM SEWER SYSTEM IS PROHIBITED. THE CONTRACTOR SHALL REMOVE AND PROPERLY DISPOSE OF ALL WASTE PRODUCTS GENERATED BY SAID CUTTING OPERATIONS ON A DAILY BASIS.
14. LOCATION OF STAGING, STORAGE, EQUIPMENT MAINTENANCE, TEMPORARY DISPOSAL, VEHICLE TRACKING CONTROL AND CONCRETE TRUCK WASHOUT AREAS WILL BE DETERMINED IN THE FIELD AT THE START OF CONSTRUCTION ACTIVITY AND DELINEATED ON THIS PLAN.

TRAILS AT ASPEN RIDGE

EL PASO COUNTY, COLORADO  
PRE-DEVELOPMENT GRADING &  
EROSION CONTROL PLAN

CONSULTANT:

PLANNER/ LANDSCAPE ARCHITECT:



2435 Research Parkway, Suite 300  
Colorado Springs, CO 80920  
Phone 719-575-0100  
Fax 719-575-0208

CIVIL ENGINEER:

Stantec  
5725 Mark Dabling Blvd, Suite 190  
Colorado Springs, CO 80919  
Phone 719-227-7388

PROJECT:

TRAILS AT ASPEN RIDGE

EL PASO COUNTY  
AUGUST, 2019

OWNER:

COLA, LLC  
555 MIDDLE CREEK PKWY, SUITE 380  
COLORADO SPRINGS, CO 80921  
(719) 382-9433

DEVELOPER:

COLA, LLC  
555 MIDDLE CREEK PKWY, SUITE 380  
COLORADO SPRINGS, CO 80921  
(719) 382-9433

ISSUE: SEPTEMBER, 2019

DRAWING INFORMATION:

PROJECT NO: 19.886.008

DRAWN BY: LUKE BONNER

CHECKED BY: NICOLE SCHANEL

APPROVED BY: NICOLE SCHANEL

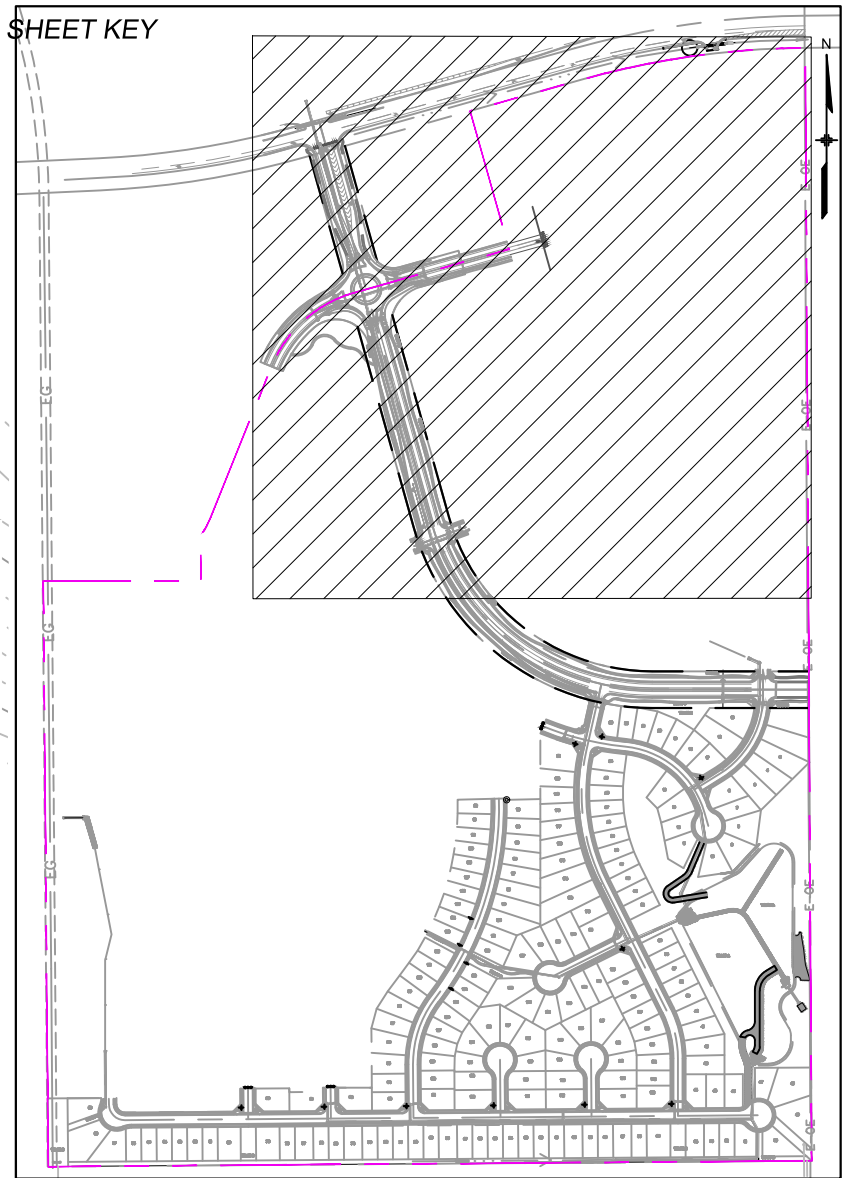
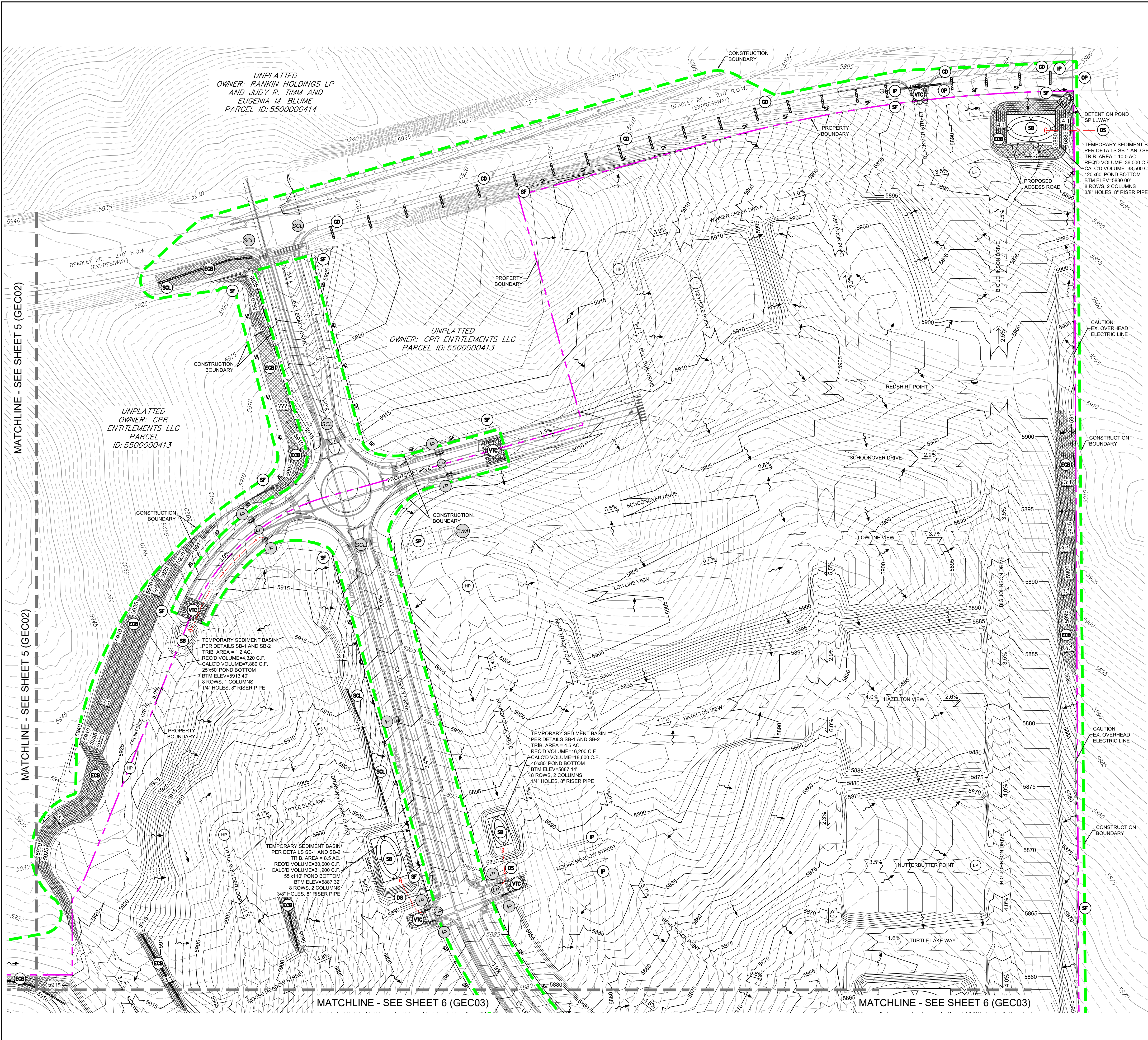
SHEET TITLE:

GENERAL  
NOTES

GN01

SHEET 3 OF 8





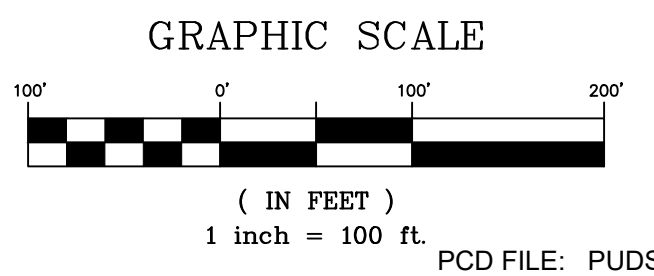
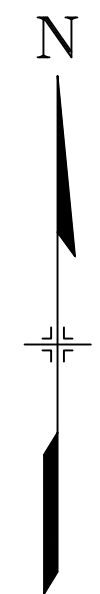
| BMP SEQUENCING |  |
|----------------|--|
| INITIAL        | SILT FENCE, CONSTRUCTION FENCE, VEHICLE TRACKING   |
| INTERIM        | SEDIMENT CONTROL LOGS, CHECK DAMS, TEMP SEDIMENT BASINS, INLET PROTECTION, STOCKPILES, STAGING |
| FINAL          | EROSION CONTROL BLANKETS, SEEDING & MULCHING   |

- EXISTING BMP INSTALLED DURING THE CONSTRUCTION OF FILING NO. 1
- TEMPORARY DRAINAGE SWALE TO BE CONSTRUCTED BY CONTRACTOR DURING OVERLOT GRADING
- EROSION CONTROL BLANKET
- SEDIMENT CONTROL LOG
- CHECK DAMS
- VEHICLE TRACKING CONTROL
- SEDIMENT BASIN
- STOCKPILE/STAGING AREA
- INLET PROTECTION
- OUTLET PROTECTION

- PROPOSED CONTOURS
- EXISTING CONTOURS
- SLOPE DIRECTION
- CUT/FILL LINE

- PROPERTY BOUNDARY
- CONSTRUCTION BOUNDARY LINE

- LOT DRAINS TO STREET
- LOT DRAINS TO STREET & REAR OF LOT
- LOT DRAINAGE VARIES
- GARDEN LEVEL BASEMENT
- WALK OUT BASEMENT



# TRAILS AT ASPEN RIDGE

EL PASO COUNTY, COLORADO  
PRE-DEVELOPMENT GRADING & EROSION CONTROL PLAN

CONSULTANT:  
PLANNER/ LANDSCAPE ARCHITECT:



2435 Research Parkway, Suite 300  
Colorado Springs, CO 80920  
Phone 719-575-0100  
Fax 719-575-0208

CIVIL ENGINEER:  
Stantec  
5725 Mark Dabbling Blvd, Suite 190  
Colorado Springs, CO 80919  
Phone 719-227-7388

PROJECT:  
TRAILS AT ASPEN RIDGE

EL PASO COUNTY  
AUGUST, 2019

OWNER:  
COLA, LLC  
555 MIDDLE CREEK PKWY, SUITE 380  
COLORADO SPRINGS, CO 80921  
(719) 382-9433

DEVELOPER:  
COLA, LLC  
555 MIDDLE CREEK PKWY, SUITE 380  
COLORADO SPRINGS, CO 80921  
(719) 382-9433

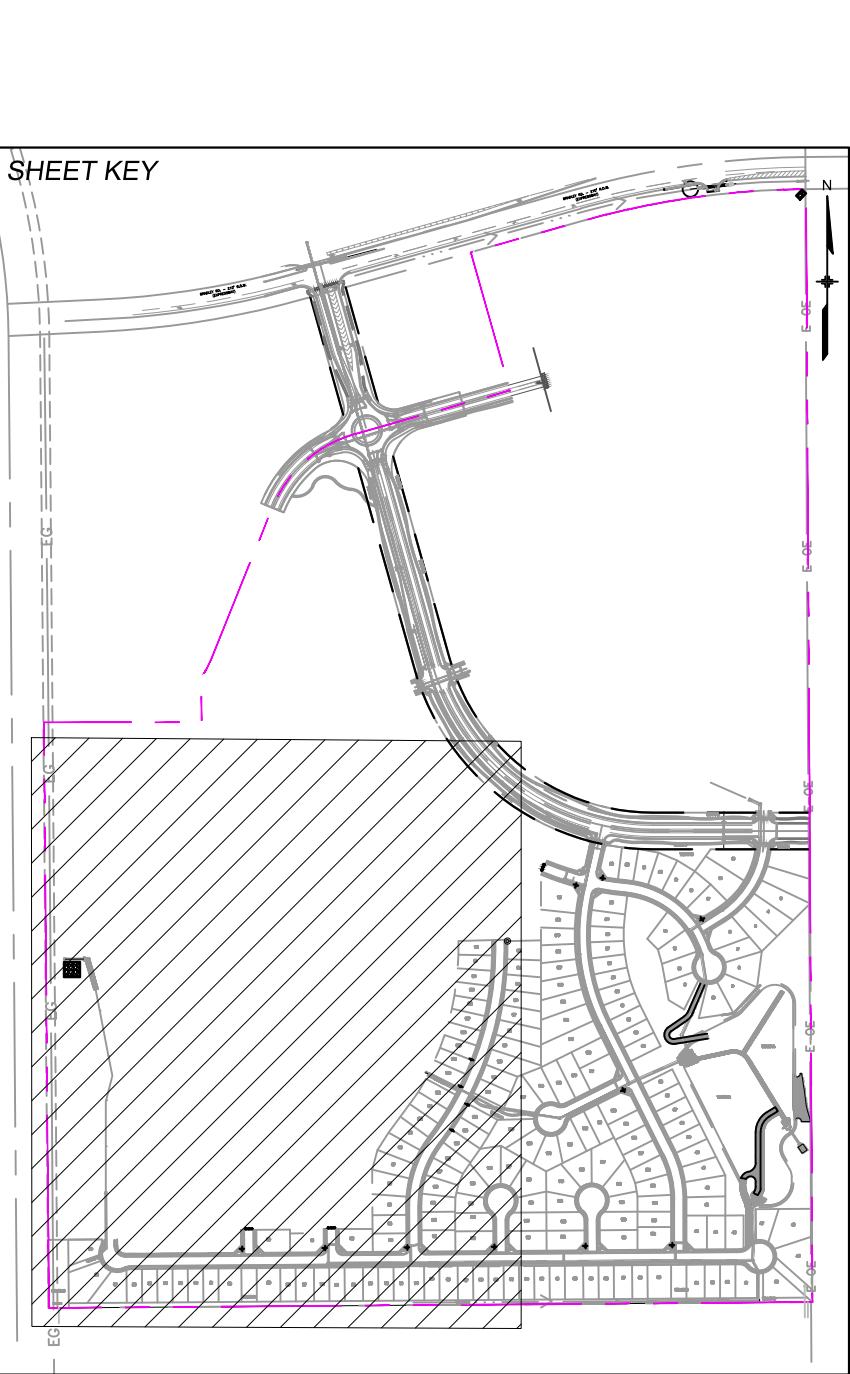
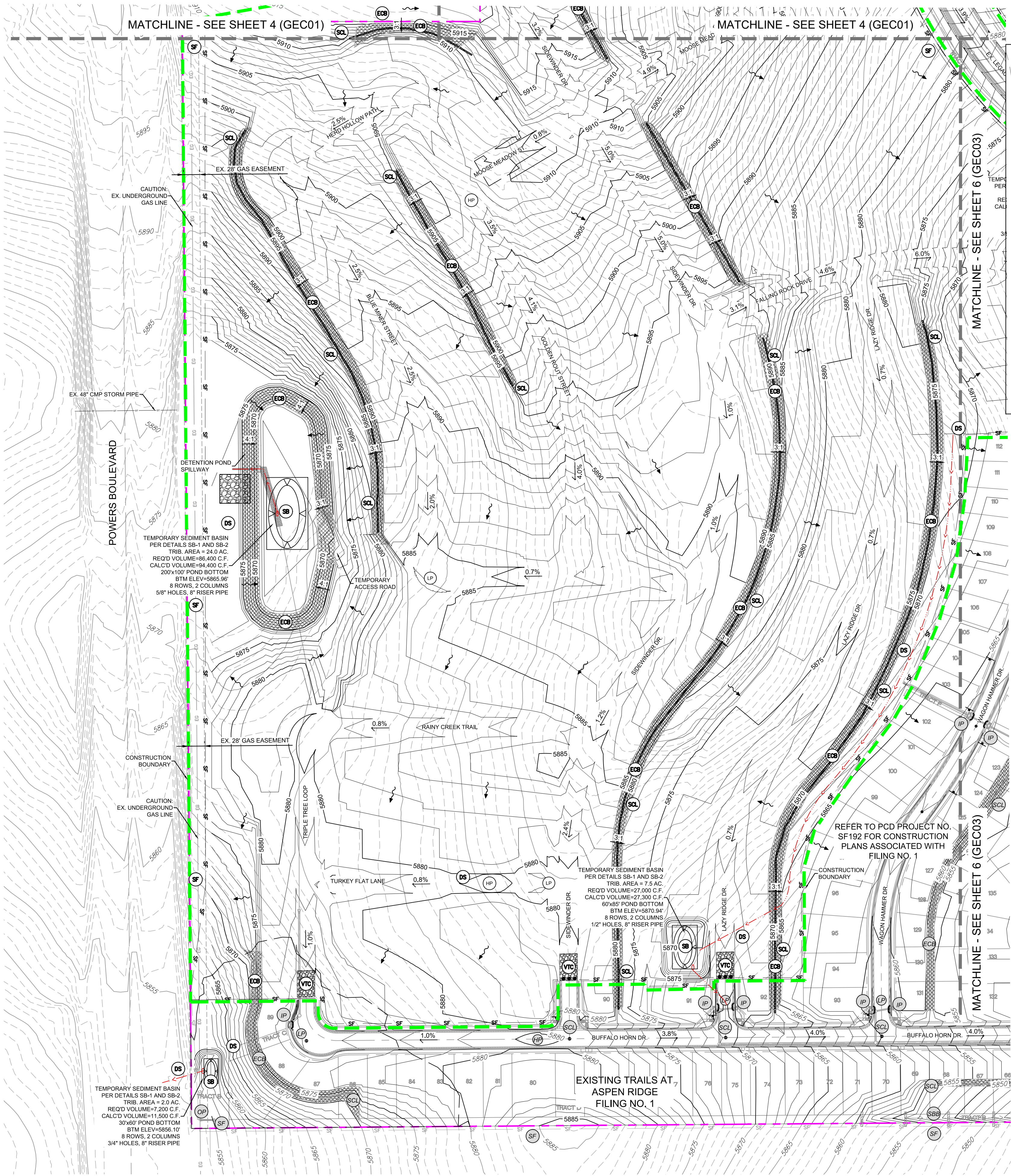
ISSUE: SEPTEMBER, 2019

| DRAWING INFORMATION: |                |
|----------------------|----------------|
| PROJECT NO:          | 19.886.008     |
| DRAWN BY:            | LUKE BONNER    |
| CHECKED BY:          | NICOLE SCHANEL |
| APPROVED BY:         | NICOLE SCHANEL |

## GRADING & EROSION CONTROL PLAN

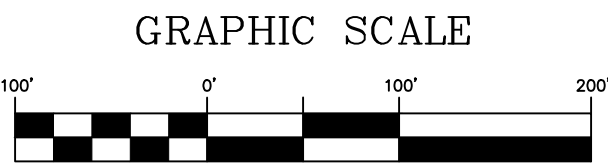
GEC01  
SHEET 4 OF 8





| BMP SEQUENCING |  |
|----------------|--|
| INITIAL        | SILT FENCE, CONSTRUCTION FENCE, VEHICLE TRACKING   |
| INTERIM        | SEDIMENT CONTROL LOGS, CHECK DAMS, TEMP SEDIMENT BASINS, INLET PROTECTION, STOCKPILES, STAGING |
| FINAL          | EROSION CONTROL BLANKETS, SEEDING & MULCHING   |

- 811**  
Know what's below.  
Call before you dig.
- ECB** **SCL** **IP** EXISTING BMP INSTALLED DURING THE CONSTRUCTION OF FILING NO. 1
- DS** TEMPORARY DRAINAGE SWALE TO BE CONSTRUCTED BY CONTRACTOR DURING OVERLOT GRADING
- ECB** EROSION CONTROL BLANKET
- SCL** SEDIMENT CONTROL LOG
- SBB** STRAW BALE BARRIER
- VTC** VEHICLE TRACKING CONTROL
- SB** SEDIMENT BASIN
- CWA** CONTRACTOR TO COORDINATE LOCATIONS OF CONCRETE WASHOUTS, STOCKPILES, AND STAGING AREAS WITH ADJACENT TRAILS AT ASPEN RIDGE FILINGS
- IP** INLET PROTECTION
- OP** OUTLET PROTECTION
- PROPOSED CONTOURS**
- EXISTING CONTOURS**
- SLOPE DIRECTION**
- LIMITS OF DISTURBANCE & CONSTRUCTION SITE BOUNDARY**
- CONSTRUCTION SITE BOUNDARY**
- 100-YR FLOODPLAIN**
- STREAMSIDE OVERLAY**
- PROPERTY LINE**
- CUT/FILL LINE**
- PROPERTY BOUNDARY**
- CONSTRUCTION BOUNDARY LINE**
- A** LOT DRAINS TO STREET
- B** LOT DRAINS TO STREET & REAR OF LOT
- T** LOT DRAINAGE VARIES
- G** GARDEN LEVEL BASEMENT
- W** WALK OUT BASEMENT



PCD FILE: PUDSP-191

## TRAILS AT ASPEN RIDGE

EL PASO COUNTY, COLORADO  
PRE-DEVELOPMENT GRADING & EROSION CONTROL PLAN

CONSULTANT:

PLANNER/ LANDSCAPE ARCHITECT:



2435 Research Parkway, Suite 300  
Colorado Springs, CO 80920  
Phone 719-575-0100  
Fax 719-575-0208

CIVIL ENGINEER:

Stantec  
5725 Mark Dabbling Blvd, Suite 190  
Colorado Springs, CO 80919  
Phone 719-227-7388

PROJECT:

TRAILS AT ASPEN RIDGE

EL PASO COUNTY  
AUGUST, 2019

OWNER:

COLA, LLC  
555 MIDDLE CREEK PKWY, SUITE 380  
COLORADO SPRINGS, CO 80921  
(719) 382-9433

DEVELOPER:

COLA, LLC  
555 MIDDLE CREEK PKWY, SUITE 380  
COLORADO SPRINGS, CO 80921  
(719) 382-9433

ISSUE: SEPTEMBER, 2019

DRAWING INFORMATION:

PROJECT NO: 19.886.008

DRAWN BY: LUKE BONNER

CHECKED BY: NICOLE SCHANEL

APPROVED BY: NICOLE SCHANEL

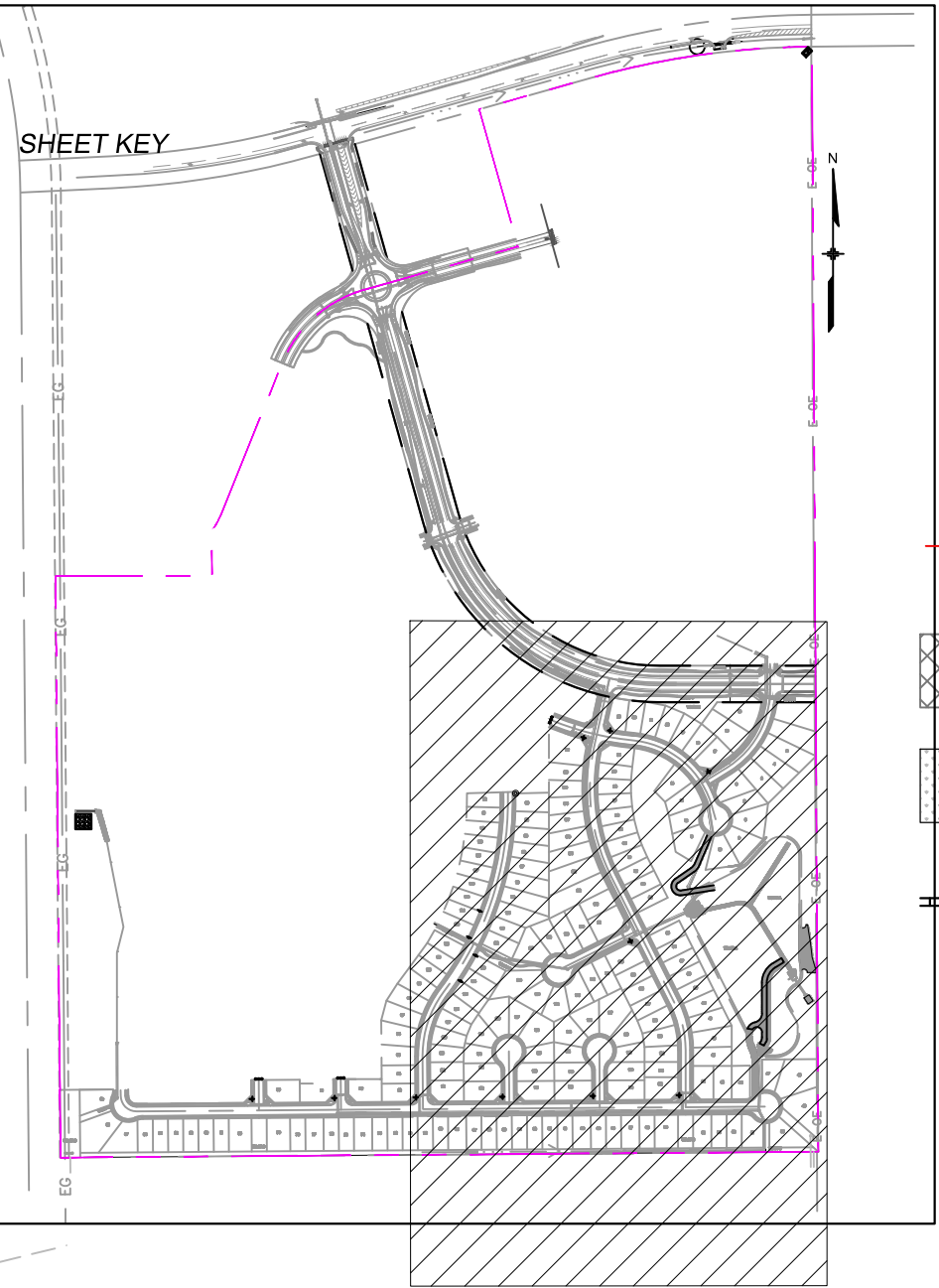
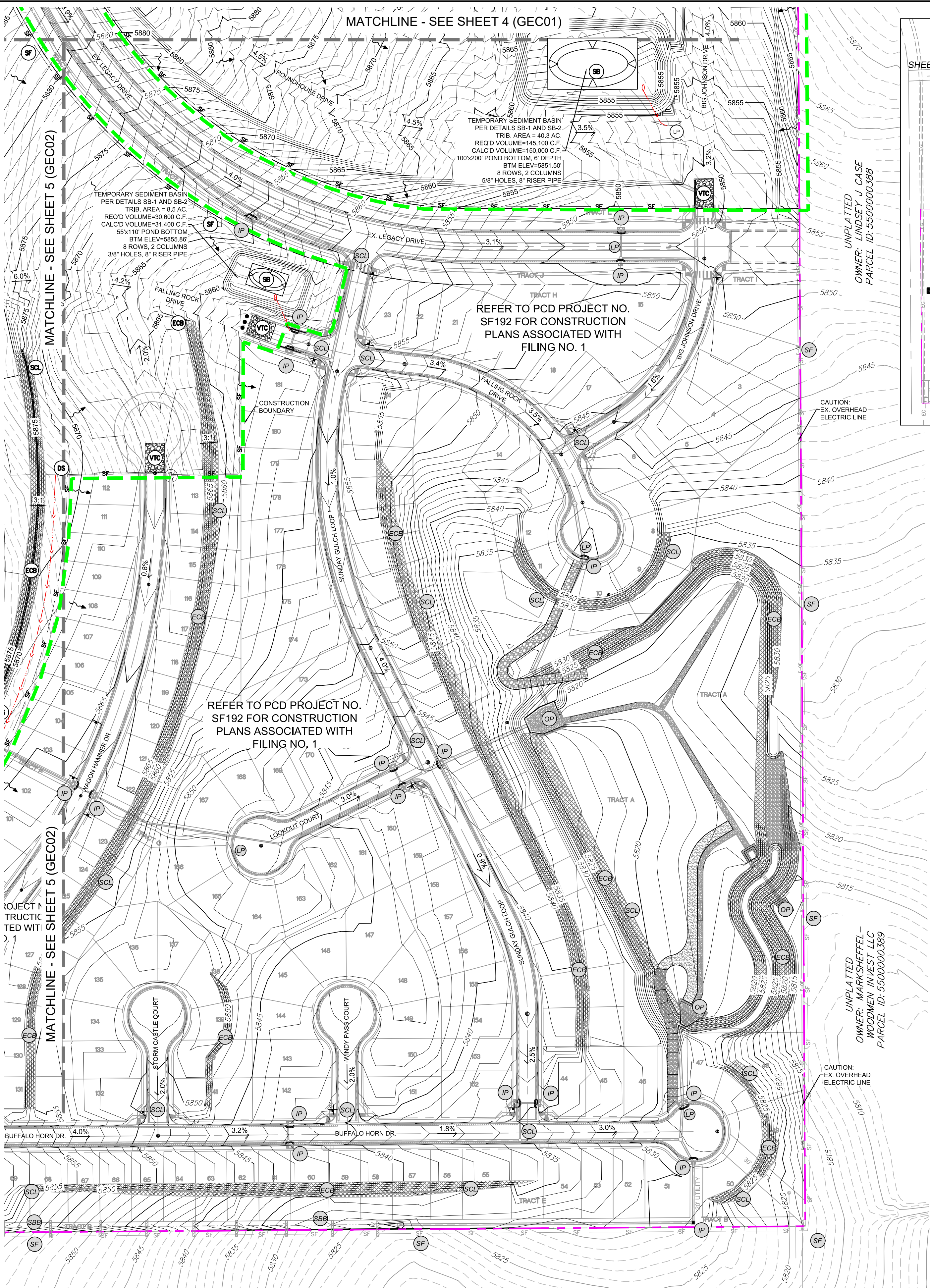
SHEET TITLE:

## GRADING & EROSION CONTROL PLAN


GEC02

SHEET 5 OF 8





| BMP SEQUENCING |  |
|----------------|--|
| INITIAL        | SILT FENCE, CONSTRUCTION FENCE, VEHICLE TRACKING   |
| INTERIM        | SEDIMENT CONTROL LOGS, CHECK DAMS, TEMP SEDIMENT BASINS, INLET PROTECTION, STOCKPILES, STAGING |
| FINAL          | EROSION CONTROL BLANKETS, SEEDING & MULCHING   |

- 

Know what's below.  
Call before you dig.
- EXISTING BMP INSTALLED DURING THE CONSTRUCTION OF FILING NO. 1

TEMPORARY DRAINAGE SWALE TO BE CONSTRUCTED BY CONTRACTOR DURING OVERLOT GRADING

EROSION CONTROL BLANKET

TEMPORARY MULCHING AND SEEDING

SEDIMENT CONTROL LOG

STRAW BALE BARRIER

VEHICLE TRACKING CONTROL

SEDIMENT BASIN

CONTRACTOR TO COORDINATE LOCATIONS OF CONCRETE WASHOUTS, STOCKPILES, AND STAGING AREAS WITH ADJACENT TRAILS AT ASPEN RIDGE FILINGS

INLET PROTECTION

OUTLET PROTECTION

PROPOSED CONTOURS

EXISTING CONTOURS

SLOPE DIRECTION

LIMITS OF DISTURBANCE & CONSTRUCTION SITE BOUNDARY

CONSTRUCTION SITE BOUNDARY

100-YR FLOODPLAIN

STREAMSIDE OVERLAY

PROPERTY LINE

CUT/FILL LINE

PROPERTY BOUNDARY

CONSTRUCTION BOUNDARY LINE

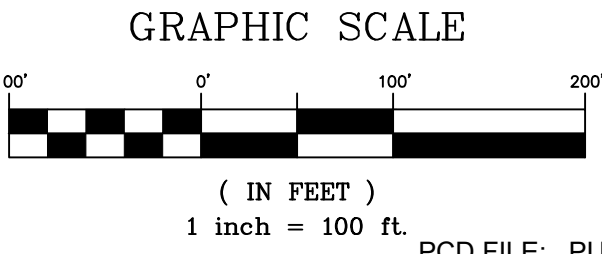
LOT DRAINS TO STREET

LOT DRAINS TO STREET & REAR OF LOT

LOT DRAINAGE VARIES

GARDEN LEVEL BASEMENT

WALK OUT BASEMENT



GRAPHIC SCALE

PCD FILE: PUDSP-191

## TRAILS AT ASPEN RIDGE

EL PASO COUNTY, COLORADO  
PRE-DEVELOPMENT GRADING & EROSION CONTROL PLAN

CONSULTANT:  
PLANNER/ LANDSCAPE ARCHITECT:  
**Matrix**  
DESIGN GROUP  
2435 Research Parkway, Suite 300  
Colorado Springs, CO 80920  
Phone 719-575-0100  
Fax 719-575-0208

CIVIL ENGINEER:  
Stantec  
5725 Mark Dabling Blvd, Suite 190  
Colorado Springs, CO 80919  
Phone 719-227-7388

PROJECT:  
**TRAILS AT ASPEN RIDGE**

EL PASO COUNTY  
AUGUST, 2019

OWNER:  
**COLA, LLC**  
555 MIDDLE CREEK PKWY, SUITE 380  
COLORADO SPRINGS, CO 80921  
(719) 382-9433

DEVELOPER:  
**COLA, LLC**  
555 MIDDLE CREEK PKWY, SUITE 380  
COLORADO SPRINGS, CO 80921  
(719) 382-9433

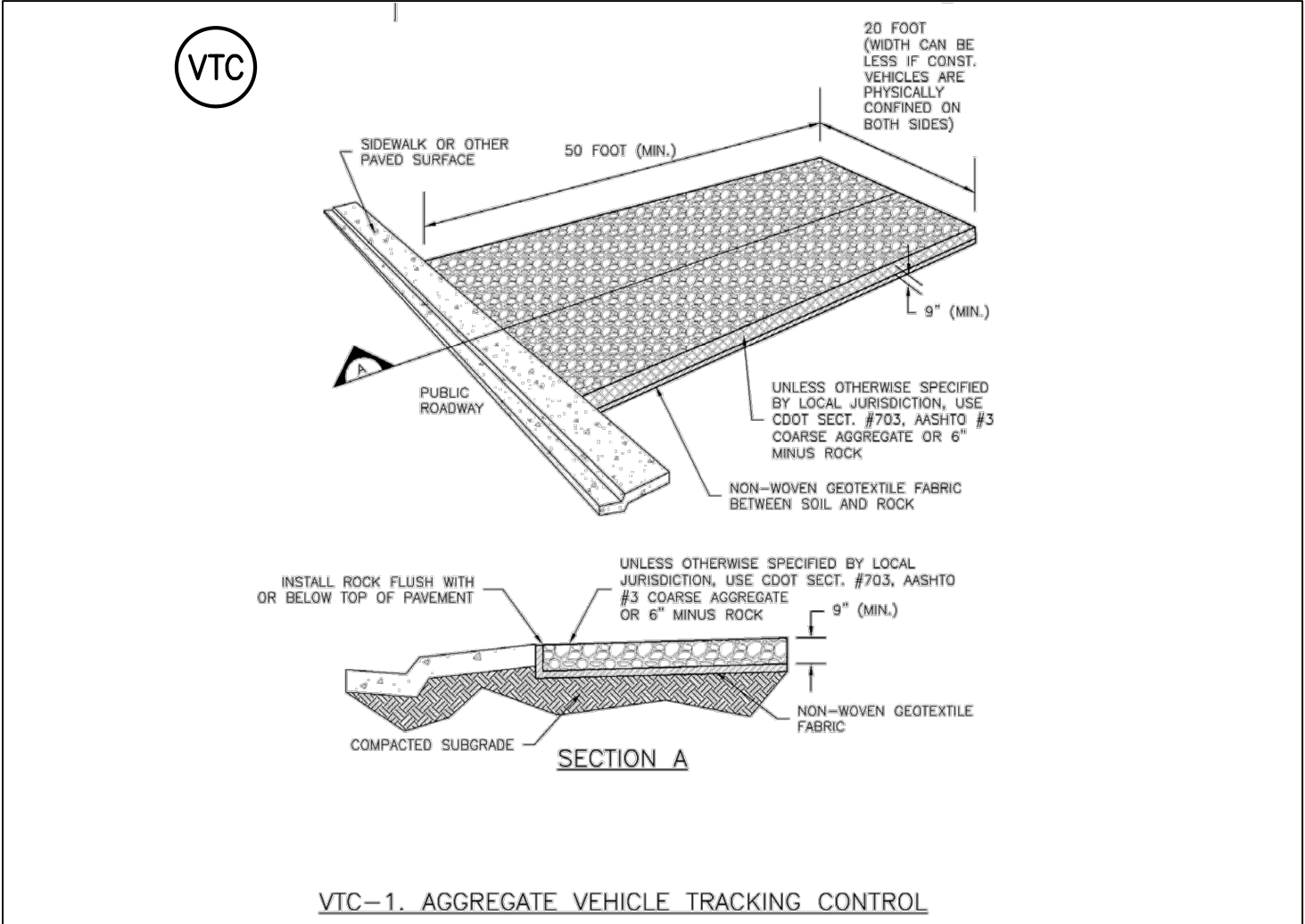
ISSUE: SEPTEMBER, 2019

| DRAWING INFORMATION: |                |
|----------------------|----------------|
| PROJECT NO:          | 19.886.008     |
| DRAWN BY:            | LUKE BONNER    |
| CHECKED BY:          | NICOLE SCHANEL |
| APPROVED BY:         | NICOLE SCHANEL |
| SHEET TITLE:         |                |

## GRADING & EROSION CONTROL PLAN

GEC03  
SHEET 6 OF 8



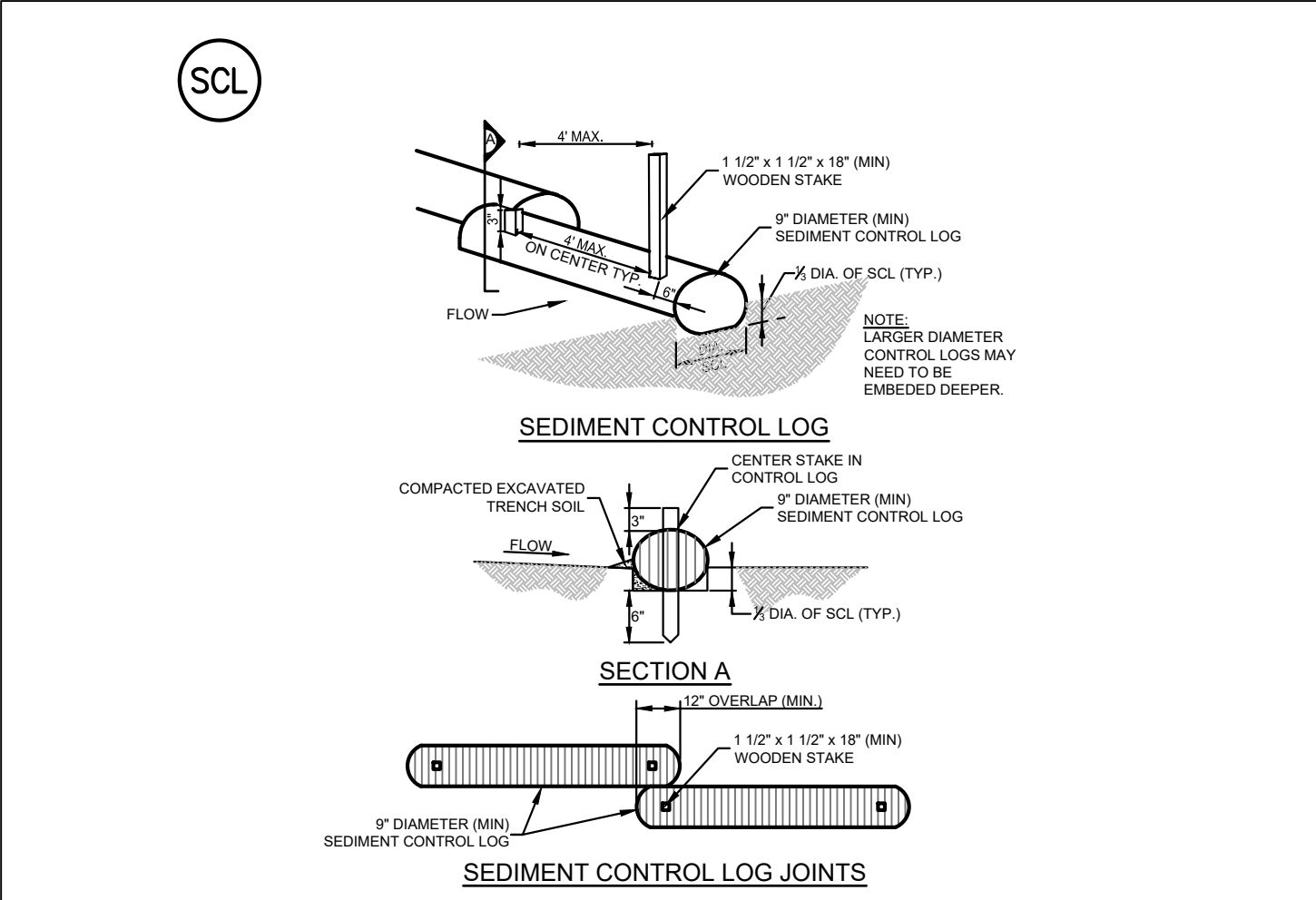


VTC-1. AGGREGATE VEHICLE TRACKING CONTROL

### STABILIZED CONSTRUCTION ENTRANCE/EXIT

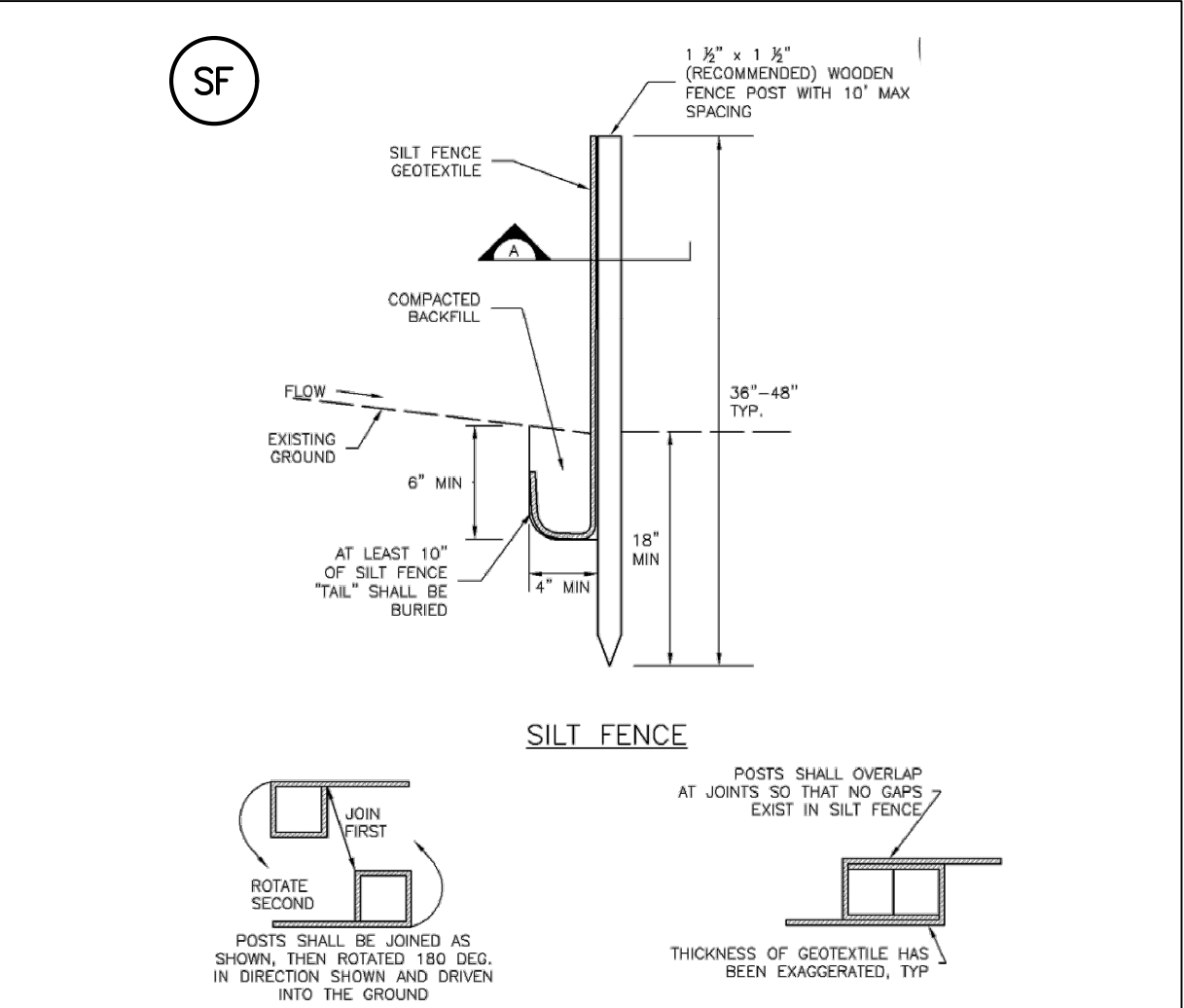
- INSTALLATION NOTES:**
  - SEE PLAN VIEW FOR:
    - LOCATION OF CONSTRUCTION ENTRANCE/EXIT.
    - TYPE OF CONSTRUCTION ENTRANCE/EXIT WITH/WITHOUT WHEEL WASH, CONSTRUCTION MAT OR TRIM.
  - CONSTRUCTION MAT OR TRIM STABILIZED CONSTRUCTION ENTRANCES ARE ONLY TO BE USED ON SHORT DURATION PROJECTS (TYPICALLY RANGING FROM A WEEK TO A MONTH) WHERE THERE WILL BE LIMITED VEHICULAR ACCESS.
  - A STABILIZED CONSTRUCTION ENTRANCE/EXIT SHALL BE LOCATED AT ALL ACCESS POINTS WHERE VEHICLES ACCESS THE CONSTRUCTION SITE FROM PAVED RIGHT-OF-WAYS.
  - STABILIZED CONSTRUCTION ENTRANCE/EXIT SHALL BE INSTALLED PRIOR TO ANY LAND DISTURBING ACTIVITIES.
  - A NON-WOVEN GEOTEXTILE FABRIC SHALL BE PLACED UNDER STABILIZED CONSTRUCTION ENTRANCE/EXIT PRIOR TO PLACEMENT OF ROCK.
  - UNLESS OTHERWISE SPECIFIED BY LOCAL JURISDICTION, ROCK SHALL CONSIST OF DOT SECTION # 703, AASHTO #3 COARSE AGGREGATE OR 6" (MINUS) ROCK.
- MAINTENANCE NOTES:**
  - INSPECT BMPs EACH WORKDAY, AND MAINTAIN THEM IN EFFECTIVE OPERATING CONDITION. MAINTENANCE OF BMPs SHOULD BE PROACTIVE, NOT REACTIVE. INSPECT BMPs AS SOON AS POSSIBLE (AND ALWAYS WITHIN 24 HOURS) FOLLOWING A STORM THAT CAUSES SURFACE EROSION, AND PERFORM NECESSARY MAINTENANCE.
  - FREQUENT OBSERVATIONS AND MAINTENANCE ARE NECESSARY TO MAINTAIN BMPs IN EFFECTIVE OPERATING CONDITION. INSPECTIONS AND CORRECTIVE MEASURES SHOULD BE DOCUMENTED THOROUGHLY.
  - WHERE BMPs HAVE FAILED, REPAIR OR REPLACEMENT SHOULD BE INITIATED UPON DISCOVERY OF THE FAILURE.
  - ROCK SHALL BE REPLACED OR REGRADED AS NECESSARY TO THE STABILIZED ENTRANCE/EXIT TO MAINTAIN CONSISTENT DEPTH.
  - SEDIMENT TRACKED ONTO PAVED ROADS IS TO BE REMOVED THROUGHOUT THE DAY AND THE END OF THE DAY BY SHOVELING OR SWEEPING. SEDIMENT MAY NOT BE WASHED DOWN THE STORM SEWER DRAINS.

Figure SM-4  
Vehicle Tracking Control  
Urban Drainage and Flood Control District  
Urban Storm Drainage Criteria Manual Volume 3



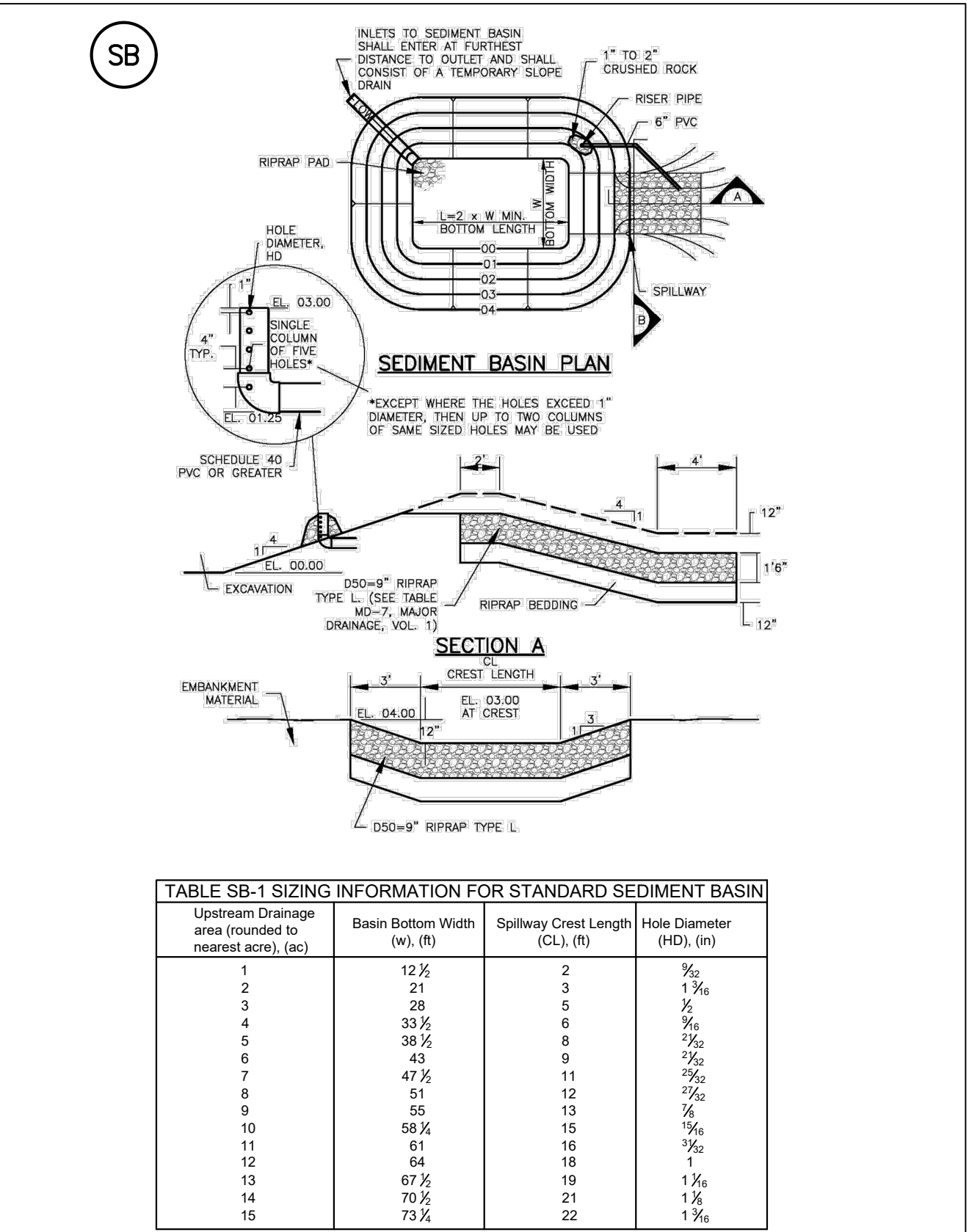
- INSTALLATION NOTES:**
  - SEE PLAN VIEW FOR LOCATION AND LENGTH OF SEDIMENT CONTROL LOGS.
  - SEDIMENT CONTROL LOGS THAT ACT AS PERIMETER CONTROL SHALL BE INSTALLED PRIOR TO ANY UPGRADE/IMPROVEMENT LAND-DISTURBING ACTIVITIES.
  - SEDIMENT CONTROL LOGS SHALL CONSIST OF STRAW, COMPOST, EXCLESIOR OR COCONUT FIBER, AND SHALL BE FREE OF ANY NOXIOUS WEED SEEDS OR DEFECTS INCLUDING RIPS, HOLES AND OBVIOUS WEAR.
  - SEDIMENT CONTROL LOGS MAY BE USED AS SMALL CHECK DAMS IN DITCHES AND SWALES. HOWEVER, THEY SHOULD NOT BE USED IN PERENNIAL STREAMS OR HIGH VELOCITY DRAINAGE WAYS.
  - IT IS RECOMMENDED THAT SEDIMENT CONTROL LOGS BE TRENCHED INTO THE GROUND TO A DEPTH OF APPROXIMATELY 1/3 THE DIAMETER OF THE LOG. IF TRENCHING TO THIS DEPTH IS NOT FEASIBLE AND/OR DESIRABLE (SHORT TERM INSTALLATION WITH DESIRE NOT TO DAMAGE LANDSCAPE) A LESSER TRENCHING DEPTH MAY BE ACCEPTABLE WITH MORE ROBUST STAKING.
  - THE UPHILL SIDE OF THE SEDIMENT CONTROL LOG SHALL BE BACKFILLED WITH SOIL THAT IS FREE OF ROCKS AND DEBRIS. THE SOIL SHALL BE TIGHTLY COMPACTED INTO THE SHAPE OF A RIGHT TRIANGLE USING A SHOVEL OR WEIGHTED LAWN ROLLER.
  - FOLLOW MANUFACTURERS' GUIDANCE FOR STAKING. IF MANUFACTURERS' INSTRUCTIONS DO NOT SPECIFY SPACING, STAKES SHALL BE PLACED ON 4' CENTERS AND EMBEDDED A MINIMUM OF 6" INTO THE GROUND. 3" OF THE STAKE SHALL PROTRUDE FROM THE TOP OF THE LOG. STAKES THAT ARE BROKEN PRIOR TO INSTALLATION SHALL BE REPLACED.
- MAINTENANCE NOTES:**
  - INSPECT BMPs EACH WORKDAY, AND MAINTAIN THEM IN EFFECTIVE OPERATING CONDITION. MAINTENANCE OF BMPs SHOULD BE PROACTIVE, NOT REACTIVE. INSPECT BMPs AS SOON AS POSSIBLE (AND ALWAYS WITHIN 24 HOURS) FOLLOWING A STORM THAT CAUSES SURFACE EROSION, AND PERFORM NECESSARY MAINTENANCE.
  - FREQUENT OBSERVATIONS AND MAINTENANCE ARE NECESSARY TO MAINTAIN BMPs IN EFFECTIVE OPERATING CONDITION. INSPECTIONS AND CORRECTIVE MEASURES SHOULD BE DOCUMENTED THOROUGHLY.
  - WHERE BMPs HAVE FAILED, REPAIR OR REPLACEMENT SHOULD BE INITIATED UPON DISCOVERY OF THE FAILURE.
  - SEDIMENT ACCUMULATED UPSTREAM OF SEDIMENT CONTROL LOG SHALL BE REMOVED AS NEEDED TO MAINTAIN FUNCTIONALITY OF THE BMP. TYPICALLY WHEN DEPTH OF ACCUMULATED SEDIMENTS IS APPROXIMATELY 1/2 OF THE HEIGHT OF THE SEDIMENT CONTROL LOG.
  - SEDIMENT CONTROL LOG SHALL BE REMOVED AT THE END OF CONSTRUCTION. IF DISTURBED AREAS EXIST AFTER REMOVAL, THEY SHALL BE COVERED WITH TOP SOIL, SEEDED AND MULCHED OR OTHERWISE STABILIZED IN A MANNER APPROVED BY THE LOCAL JURISDICTION.

Figure SC-2  
Sediment Control Log  
Urban Drainage and Flood Control District  
Urban Storm Drainage Criteria Manual Volume 3



- SECTION A  
SILT FENCE NOTES**
- SILT FENCE INSTALLATION NOTES:**
  - SILT FENCE MUST BE PLACED AWAY FROM THE TOE OF THE SLOPE TO ALLOW FOR WATER PONDING. SILT FENCE AT TOP OF A SLOPE SHOULD BE INSTALLED IN A FLAT LOCATION AT LEAST SEVERAL FEET (2-5 FT) FROM THE TOE OF THE SLOPE TO ALLOW ROOM FOR PONDING AND DEPOSITION.
  - A UNIFORM 6" x 4" ANCHOR TRENCH SHALL BE EXCAVATED USING TRENCHER OR SILT FENCE INSTALLATION DEVICE. NO ROAD GRADERS, BACKHOES, OR SIMILAR EQUIPMENT SHALL BE USED.
  - COMPACT ANCHOR TRENCH BY HAND OR WITH A "JUMPING JACK" OR BY WHEEL ROLLING COMPACTION SHALL BE SUCH THAT SILT FENCE RESISTS BEING PULLED OUT OF ANCHOR TRENCH BY HAND.
  - SILT FENCE SHALL BE PULLED TIGHT AS IT IS ANCHORED TO THE STAKES. THERE SHOULD BE NO NOTICEABLE SAG BETWEEN STAKES AFTER IT HAS BEEN ANCHORED TO THE STAKES.
  - SILT FENCE FABRIC SHALL BE ANCHORED TO THE STAKES USING 1" HEAVY DUTY STAPLES OR NAILS WITH 1" HEADS. STAPLES AND NAILS SHOULD BE PLACED 3" ALONG THE FABRIC DOWN THE STAKE.
  - AT THE END OF A RUN OF SILT FENCE ALONG A CONTOUR, THE SILT FENCE SHOULD BE TURNED PERPENDICULAR TO THE CONTOUR TO CREATE A "J-HOOK". THE "J-HOOK" EXTENDING PERPENDICULAR TO THE CONTOUR SHOULD BE OF SUFFICIENT LENGTH TO KEEP RUNOFF FROM FLOWING AROUND THE END OF THE SILT FENCE (TYPICALLY 10' - 20').
  - SILT FENCE SHALL BE IN STALLED PRIOR TO ANY LAND DISTURBING ACTIVITIES.
- SILT FENCE MAINTENANCE NOTES:**
  - INSPECT BMPs EACH WORKDAY, AND MAINTAIN THEM IN EFFECTIVE OPERATING CONDITION. MAINTENANCE OF BMPs SHOULD BE PROACTIVE, NOT REACTIVE. INSPECT BMPs AS SOON AS POSSIBLE (AND ALWAYS WITHIN 24 HOURS) FOLLOWING A STORM THAT CAUSES SURFACE EROSION, AND PERFORM NECESSARY MAINTENANCE.
  - FREQUENT OBSERVATIONS AND MAINTENANCE ARE NECESSARY TO MAINTAIN BMPs IN EFFECTIVE OPERATING CONDITION. INSPECTIONS AND CORRECTIVE MEASURES SHOULD BE DOCUMENTED THOROUGHLY.
  - WHERE BMPs HAVE FAILED, REPAIR OR REPLACEMENT SHOULD BE INITIATED UPON DISCOVERY OF THE FAILURE.
  - SEDIMENT ACCUMULATED UPSTREAM OF THE SILT FENCE SHALL BE REMOVED AS NEEDED TO MAINTAIN FUNCTIONALITY OF THE BMP. TYPICALLY WHEN DEPTH OF ACCUMULATED SEDIMENTS IS APPROXIMATELY 6".
  - REPAIR OR REPLACE SILT FENCE WHEN THERE ARE SIGN OF WEAR, SUCH AS SAGGING, TEARING, OR COLLAPSE.
  - SILT FENCE IS TO REMAIN IN PLACE UNTIL THE UPSTREAM DISTURBED AREA IS STABILIZED AND APPROVED BY THE LOCAL JURISDICTION, OR IS REPLACED BY AN EQUIVALENT PERIMETER SEDIMENT CONTROL BMP.
  - WHEN SILT FENCE IS REMOVED, ALL DISTURBED AREAS SHALL BE COVERED WITH TOP SOIL, SEEDED AND MULCHED OR OTHERWISE STABILIZED AS APPROVED BY LOCAL JURISDICTION.

Figure SC-1  
Silt Fence  
Urban Drainage and Flood Control District  
Urban Storm Drainage Criteria Manual Volume 3



| TABLE SB-1 SIZING INFORMATION FOR STANDARD SEDIMENT BASIN |                              |                                  |                          |
|---|------------------------------|----------------------------------|--------------------------|
| Upstream Drainage area (rounded to nearest acre), (ac)    | Basin Bottom Width (w), (ft) | Spillway Crest Length (CL), (ft) | Hole Diameter (HD), (in) |
| 1   | 12 1/2                       | 2                                | 3/8                      |
| 2   | 21                           | 3                                | 1/2                      |
| 3   | 28                           | 5                                | 1 1/8                    |
| 4   | 33 1/2                       | 6                                | 3/4                      |
| 5   | 38 1/2                       | 8                                | 1 1/4                    |
| 6   | 43                           | 9                                | 1 1/2                    |
| 7   | 47 1/2                       | 11                               | 1 3/4                    |
| 8   | 51                           | 12                               | 1 7/8                    |
| 9   | 55                           | 13                               | 2                        |
| 10  | 58 1/2                       | 15                               | 2 1/8                    |
| 11  | 61                           | 16                               | 2 1/4                    |
| 12  | 64                           | 18                               | 2 1/2                    |
| 13  | 67 1/2                       | 19                               | 2 3/4                    |
| 14  | 70 1/2                       | 21                               | 2 7/8                    |
| 15  | 73 1/2                       | 22                               | 3                        |

### SEDIMENT BASIN

- SEDIMENT BASIN INSTALLATION NOTES:**
  - SEE PLAN VIEW FOR:
    - LOCATION OF SEDIMENT BASIN.
    - TYPE OF BASIN (STANDARD BASIN OR NONSTANDARD BASIN).
    - FOR STANDARD BASIN, BOTTOM WIDTH W, CREST LENGTH CL, AND HOLE DIAMETER, HD.
    - FOR NONSTANDARD BASIN, SEE CONSTRUCTION DRAWINGS FOR DESIGN OF BASIN INCLUDING RISER HEIGHT H, NUMBER OF COLUMNS N, HOLE DIAMETER HD AND PIPE DIAMETER D.
  - FOR STANDARD BASIN, BOTTOM DIMENSION MAY BE MODIFIED AS LONG AS BOTTOM AREA IS NOT REDUCED.
  - SEDIMENT BASINS INSTALLED PRIOR TO ANY OTHER LAND-DISTURBING ACTIVITY THAT RELIES ON BASINS AS A STORMWATER CONTROL.
  - EMBANKMENT MATERIAL SHALL CONSIST OF SOIL FREE OF DEBRIS, ORGANIC MATERIAL, AND ROCKS OR CONCRETE GREATER THAN 3 INCHES AND SHALL HAVE A MINIMUM OF 15 PERCENT BY WEIGHT PASSING THE NO. 200 SIEVE.
  - EMBANKMENT MATERIAL SHALL BE COMPACTED TO AT LEAST 95 PERCENT OF MAXIMUM DENSITY IN ACCORDANCE WITH ASTM D698.
  - PIPE SCH 40 OR GREATER SHALL BE USED.
  - THE DETAILS SHOWN ON THESE SHEETS PERTAIN TO STANDARD SEDIMENT BASINS FOR DRAINAGE AREAS LESS THAN 15 ACRES. SEE CONSTRUCTION DRAWINGS FOR EMBANKMENT, STORAGE VOLUME, SPILLWAY, OUTLET, AND OUTLET PROTECTION DETAILS FOR ANY SEDIMENT BASINS THAT HAVE BEEN INDIVIDUALLY DESIGNED FOR DRAINAGE AREAS.
- SEDIMENT BASIN MAINTENANCE NOTES:**
  - INSPECT BMPs EACH WORKDAY, AND MAINTAIN THEM IN EFFECTIVE OPERATING CONDITION. MAINTENANCE OF BMPs SHOULD BE PROACTIVE, NOT REACTIVE. INSPECT BMPs AS SOON AS POSSIBLE (AND ALWAYS WITHIN 24 HOURS) FOLLOWING A STORM THAT CAUSES SURFACE EROSION, AND PERFORM NECESSARY MAINTENANCE.
  - FREQUENT OBSERVATIONS AND MAINTENANCE ARE NECESSARY TO MAINTAIN BMPs IN EFFECTIVE OPERATING CONDITION. INSPECTIONS AND CORRECTIVE MEASURES SHOULD BE DOCUMENTED THOROUGHLY.
  - WHERE BMPs HAVE FAILED, REPAIR OR REPLACEMENT SHOULD BE INITIATED UPON DISCOVERY OF THE FAILURE.
  - SEDIMENT ACCUMULATED IN BASIN SHALL BE REMOVED AS NEEDED TO MAINTAIN BMP EFFECTIVENESS. TYPICALLY WHEN SEDIMENT DEPTH REACHES ONE FOOT (I.E., TWO FEET BELOW THE SPILLWAY CREST).
  - SEDIMENT BASINS ARE TO REMAIN IN PLACE UNTIL THE UPSTREAM DISTURBED AREA IS STABILIZED AND GRASS COVER IS ACCEPTED BY THE LOCAL JURISDICTION.
  - WHEN SEDIMENT BASINS ARE REMOVED, ALL DISTURBED AREAS SHALL BE COVERED WITH TOPSOIL, SEEDED AND MULCHED OR OTHERWISE STABILIZED AS APPROVED BY LOCAL JURISDICTION.

Figure SC-7  
Sediment Basin  
Urban Drainage and Flood Control District  
Urban Storm Drainage Criteria Manual Volume 3



Know what's below.  
Call before you dig.

### TRAILS AT ASPEN RIDGE

EL PASO COUNTY, COLORADO  
PRE-DEVELOPMENT GRADING &  
EROSION CONTROL PLAN

CONSULTANT:

PLANNER/ LANDSCAPE ARCHITECT:



2435 Research Parkway, Suite 300  
Colorado Springs, CO 80920  
Phone 719-575-0100  
Fax 719-575-0208

CIVIL ENGINEER:

Stantec  
5725 Mark Dabling Blvd, Suite 190  
Colorado Springs, CO 80919  
Phone 719-227-7388

PROJECT:

TRAILS AT ASPEN RIDGE

EL PASO COUNTY

AUGUST, 2019

OWNER:

COLA, LLC  
555 MIDDLE CREEK PKWY, SUITE 380  
COLORADO SPRINGS, CO 80921  
(719) 382-9433

DEVELOPER:

COLA, LLC  
555 MIDDLE CREEK PKWY, SUITE 380  
COLORADO SPRINGS, CO 80921  
(719) 382-9433

ISSUE: SEPTEMBER, 2019

DRAWING INFORMATION:

PROJECT NO: 19.886.008

DRAWN BY: LUKE BONNER

CHECKED BY: NICOLE SCHANEL

APPROVED BY: NICOLE SCHANEL

SHEET TITLE:

## EROSION CONTROL NOTES

ECN01

SHEET 7 OF 8





Know what's below.  
Call before you dig.

TRAILS AT ASPEN RIDGE

EL PASO COUNTY, COLORADO  
PRE-DEVELOPMENT GRADING &  
EROSION CONTROL PLAN

CONSULTANT:

PLANNER/ LANDSCAPE ARCHITECT:



2435 Research Parkway, Suite 300  
Colorado Springs, CO 80920  
Phone 719-575-0100  
Fax 719-575-0208

CIVIL ENGINEER:

Stantec  
5725 Mark Dabling Blvd, Suite 190  
Colorado Springs, CO 80919  
Phone 719-227-7388

PROJECT:

TRAILS AT ASPEN RIDGE

EL PASO COUNTY  
AUGUST, 2019

OWNER:

COLA, LLC  
555 MIDDLE CREEK PKWY, SUITE 380  
COLORADO SPRINGS, CO 80921  
(719) 382-9433

DEVELOPER:

COLA, LLC  
555 MIDDLE CREEK PKWY, SUITE 380  
COLORADO SPRINGS, CO 80921  
(719) 382-9433

ISSUE: SEPTEMBER, 2019

DRAWING INFORMATION:

PROJECT NO: 19.886.008

DRAWN BY: LUKE BONNER

CHECKED BY: NICOLE SCHANEL

APPROVED BY: NICOLE SCHANEL

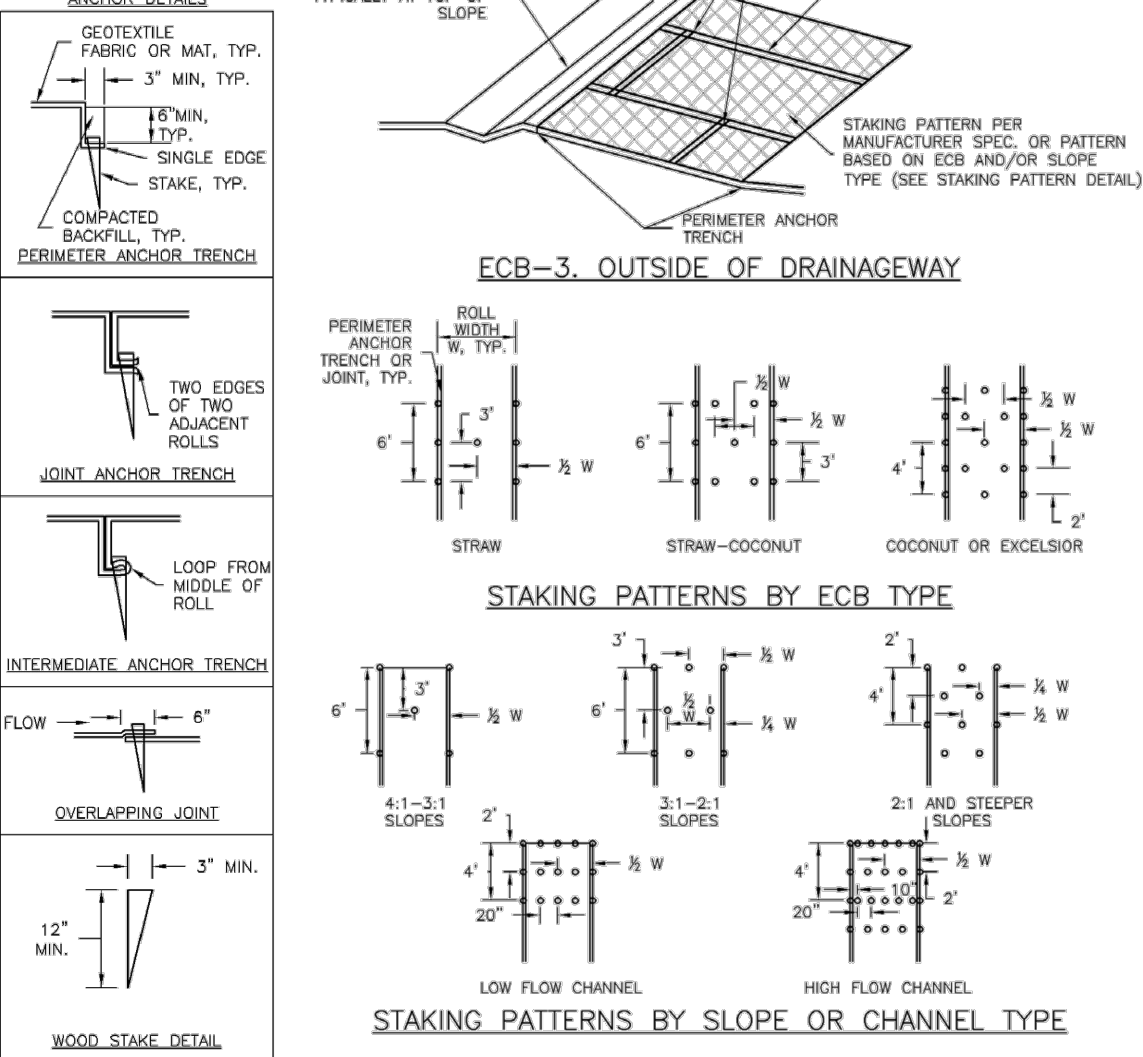
SHEET TITLE:

EROSION  
CONTROL  
NOTES

ECN02

SHEET 8 OF 8

ECB



| TABLE ECB-1, ECB MATERIAL SPECIFICATIONS |                 |               |                   |                        |
|--|-----------------|---------------|-------------------|------------------------|
| TYPE                                     | COCONUT CONTENT | STRAW CONTENT | EXCELSIOR CONTENT | RECOMMENDED NETTING ** |
| STRAW *                                  | -               | 100%          | -                 | DOUBLE/ NATURAL        |
| STRAW-COCONUT                            | 30% MIN         | 70% MAX       | -                 | DOUBLE/ NATURAL        |
| COCONUT                                  | 100%            | -             | -                 | DOUBLE/ NATURAL        |
| EXCELSIOR                                | -               | -             | 100%              | DOUBLE/ NATURAL        |

\* STRAW ECBs MAY ONLY BE USED OUTSIDE OF STREAMS AND DRAINAGE CHANNELS.  
\*\* ALTERNATE NETTING MAY BE ACCEPTABLE IN SOME JURISDICTIONS.

EROSION CONTROL BLANKET

INSTALLATION NOTES:

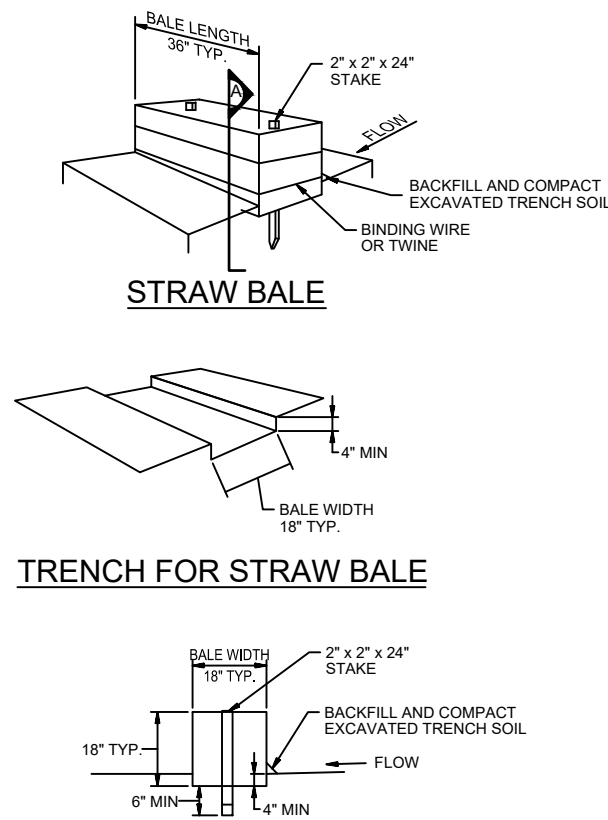
- SEE PLAN VIEW FOR:  
- LOCATION OF ECB  
- TYPE OF ECB (STRAW, STRAW-COCONUT, COCONUT, EXCELSIOR)  
- AREA, A, IN SQUARE YARDS OF EACH TYPE OF ECB.
- 100% NATURAL AND BIODEGRADABLE MATERIALS ARE PREFERRED FOR RECPs. ALTHOUGH SOME JURISDICTIONS MAY ALLOW OTHER MATERIALS IN SOME APPLICATIONS.
- IN AREAS WHERE ECBs ARE SHOWN ON THE PLANS, THE PERMITTEE SHALL PLACE TOPSOIL AND PERFORM FINAL GRADING, SURFACE PREPARATION, AND SEEDING AND MULCHING. SUBGRADE SHALL BE SMOOTH AND MOIST PRIOR TO ECB INSTALLATION AND THE ECB SHALL BE IN FULL CONTACT WITH SUBGRADE. NO GAPS OR VOIDS SHALL EXIST UNDER THE BLANKET.
- PERIMETER ANCHOR TRENCH SHALL BE USED ALONG THE OUTSIDE PERIMETER OF ALL BLANKET AREAS.
- JOINT ANCHOR TRENCH SHALL BE USED TO JOIN ROLLS OF ECBs TOGETHER LONGITUDINALLY AND TRANSVERSELY FOR ALL ECBs EXCEPT STRAW WHICH MAY USE AN OVERLAPPING JOINT.
- INTERMEDIATE ANCHOR TRENCH SHALL BE USED AT SPACINGS OF ONE-HALF ROLL LENGTH FOR COCONUT AND EXCELSIOR ECBs.
- OVERLAPPING JOINT DETAIL SHALL BE USED TO JOIN ROLLS OF ECBs TOGETHER FOR ECBs ON SLOPES.
- MATERIAL SPECIFICATIONS OF ECBs SHALL CONFORM TO TABLE ECB-1.
- ANY AREAS OF SEEDING AND MULCHING DISTURBED IN THE PROCESS OF INSTALLING ECBs SHALL BE RESEEDED AND MULCHED.
- DETAILS ON DESIGN PLAND FOR MAJOR DRAINAGEWAY STABILIZATION WILL GOVERN IF DIFFERENT FROM THOSE SHOWN HERE.

MAINTENANCE NOTES:

- INSPECT BMPs EACH WORKDAY, AND MAINTAIN THEM IN EFFECTIVE OPERATING CONDITION. MAINTENANCE OF BMPs SHOULD BE PROACTIVE, NOT REACTIVE. INSPECT BMPs AS SOON AS POSSIBLE (AND ALWAYS WITHIN 24 HOURS) FOLLOWING A STORM THAT CAUSES SURFACE EROSION, AND PERFORM NECESSARY MAINTENANCE.
- FREQUENT OBSERVATIONS AND MAINTENANCE ARE NECESSARY TO MAINTAIN BMPs IN EFFECTIVE OPERATING CONDITION. INSPECTIONS AND CORRECTIVE MEASURES SHOULD BE DOCUMENTED THOROUGHLY.
- WHERE BMPs HAVE FAILED, REPAIR OR REPLACEMENT SHOULD BE INITIATED UPON DISCOVERY OF THE FAILURE.
- ECBs SHALL BE LEFT IN PLACE TO EVENTUALLY BIODEGRADE, UNLESS REQUESTED TO BE REMOVED BY THE LOCAL JURISDICTION.
- ANY ECB PULLED OUT, TORN, OR OTHERWISE DAMAGED SHALL BE REPAIRED OR REINSTALLED. ANY SUBGRADE AREAS BELOW THE GEOTEXTILE THAT HAVE ERODED TO CREATED A VOID UNDER THE BLANKET, OR THAT REMAIN DEVOID OF GRASS SHALL BE REPAIRED, RESEEDED AND MULCHED AND THE ECB REINSTALLED.

Figure EC-6  
Rolled Erosion Control Product  
Urban Drainage and Flood Control District  
Urban Storm Drainage Criteria Manual Volume 3

SBB



STRAW BALE BARRIER NOTES:

STRAW BALE INSTALLATION NOTES:

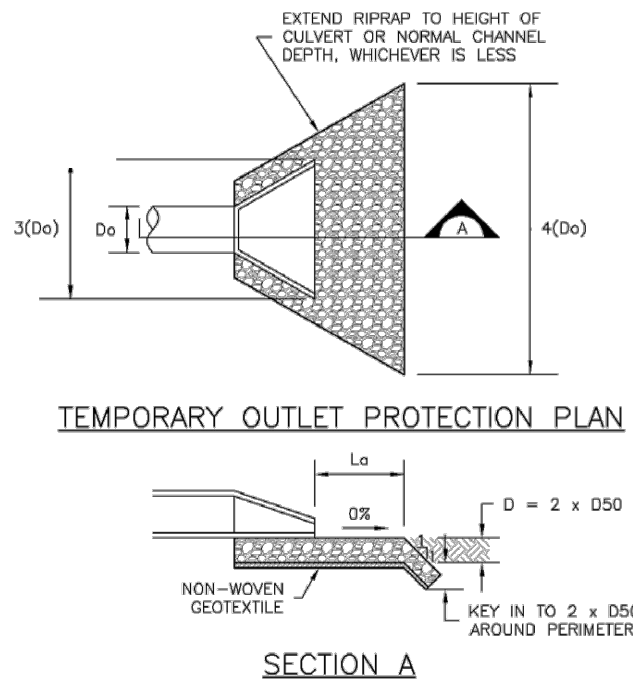
- SEE PLAN VIEW FOR:  
- LOCATION(S) OF STRAW BALES.
- STRAW BALES SHALL CONSIST OF CERTIFIED WEED FREE STRAW OR HAY. LOCAL JURISDICTIONS MAY REQUIRE PROOF THAT BALES ARE WEED FREE.
- STRAW BALES SHALL CONSIST OF APPROXIMATELY 5 CUBIC FEET OF STRAW OR HAY AND WEIGH NOT LESS THAN 35 POUNDS.
- WHEN STRAW BALES ARE USED IN A SERIES AS A BARRIER, THE END OF EACH BALE SHALL BE TIGHTLY ABUTTING ON ANOTHER.
- STRAW BALE DIMENSIONS SHALL BE APPROXIMATELY 36"x18"x18".
- A UNIFORM ANCHOR TRENCH SHALL BE EXCAVATED TO A DEPTH OF 4". STRAW BALES SHALL BE PLACED SO THAT BINDING TWINE IS ENCOMPASSING THE VERTICAL SIDES OF THE BALE(S). ALL EXCAVATED SOIL SHALL BE PLACED ON THE UPHILL SIDE OF THE STRAW BALE(S) AND COMPACTED.
- TWO (2) WOODEN STAKES SHALL BE USED TO HOLD EACH BALE IN PLACE. WOODEN STAKES SHALL BE 2"x2"x24". WOODEN STAKES SHALL BE DRIVEN 6" INTO THE GROUND.

STRAW BALE MAINTENANCE NOTES:

- INSPECT BMPs EACH WORKDAY, AND MAINTAIN THEM IN EFFECTIVE OPERATING CONDITION. MAINTENANCE OF BMPs SHOULD BE PROACTIVE, NOT REACTIVE. INSPECT BMPs AS SOON AS POSSIBLE (AND ALWAYS WITHIN 24 HOURS) FOLLOWING A STORM THAT CAUSES SURFACE EROSION, AND PERFORM NECESSARY MAINTENANCE.
- FREQUENT OBSERVATIONS AND MAINTENANCE ARE NECESSARY TO MAINTAIN BMPs IN EFFECTIVE OPERATING CONDITION. INSPECTIONS AND CORRECTIVE MEASURES SHOULD BE DOCUMENTED THOROUGHLY.
- WHERE BMPs HAVE FAILED, REPAIR OR REPLACEMENT SHOULD BE INITIATED UPON DISCOVERY OF THE FAILURE.
- STRAW BALES SHALL BE REPLACED IF THEY BECOME HEAVILY SOILED, ROTTEN, OR DAMAGED BEYOND REPAIR.
- SEDIMENT ACCUMULATED UPSTREAM OF STRAW BALE BARRIER SHALL BE REMOVED AS NEEDED TO MAINTAIN FUNCTIONALITY OF THE BMP. TYPICALLY WHEN DEPTH OF ACCUMULATED SEDIMENTS IS APPROXIMATELY 1/4 OF THE HEIGHT OF THE STRAW BARRIER BALE.
- STRAW BALES ARE TO REMAIN IN PLACE UNTIL THE UPSTREAM DISTURBED AREA IS STABILIZED AND APPROVED BY THE LOCAL JURISDICTION.
- WHEN THE STRAW BALES ARE REMOVED, ALL DISTURBED AREAS SHALL BE COVERED WITH TOP SOIL, SEEDED AND MULCHED OR OTHERWISE STABILIZED AS APPROVED BY LOCAL JURISDICTION.

Figure SC-3  
Straw Bale Barrier  
Urban Drainage and Flood Control District  
Urban Storm Drainage Criteria Manual Volume 3

OP



| PIPE DIAMETER, D <sub>p</sub> (INCHES) | DISCHARGE, Q (CFS)   | APRON LENGTH, L <sub>a</sub> (FT) | RIPRAP D <sub>50</sub> DIAMETER MIN. (INCHES) |
|--|----------------------|-----------------------------------|---|
| 8                                      | 2.5<br>5             | 5<br>10                           | 4<br>6  |
| 12                                     | 5<br>10              | 10<br>13                          | 4<br>6  |
| 18                                     | 10<br>20<br>30<br>40 | 10<br>16<br>23<br>26              | 6<br>9<br>12<br>16                            |
| 24                                     | 30<br>40<br>50<br>60 | 16<br>26<br>26<br>30              | 9<br>9<br>12<br>16                            |

TEMPORARY OUTLET PROTECTION

INSTALLATION NOTES:

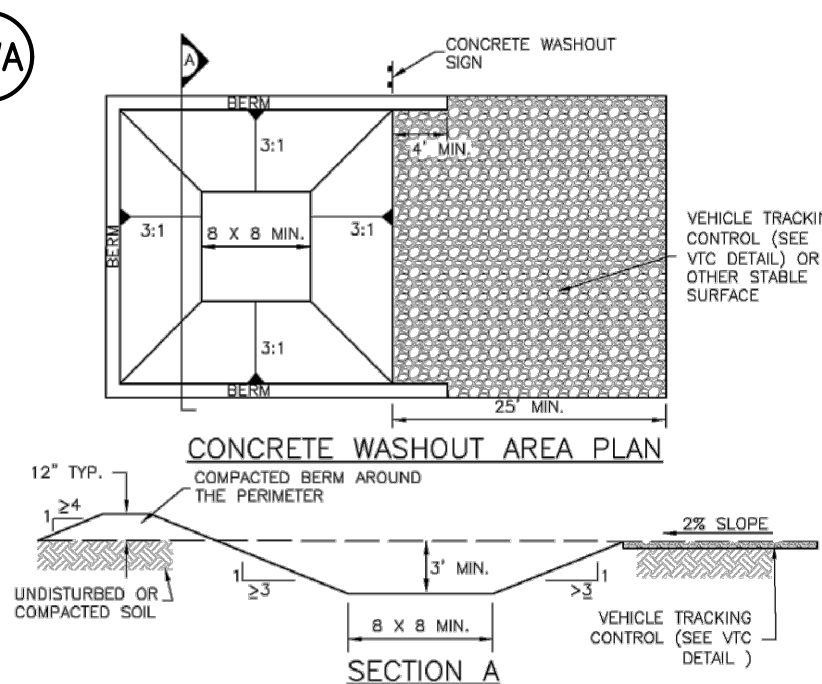
- SEE PLAN VIEW FOR:  
- LOCATION OF OUTLET PROTECTION  
- DIMENSIONS OF OUTLET PROTECTION
- DETAIL IS INTENDED FOR PIPES WITH SLOPE  $\leq$  10%. ADDITIONAL EVALUATION OF RIPRAP SIZING AND OUTLET PROTECTION DIMENSIONS REQUIRED FOR STEEPER SLOPES.
- TEMPORARY OUTLET PROTECTION INFORMATION IS FOR OUTLETS INTENDED TO BE UTILIZED LESS THAN 2 YEARS.

MAINTENANCE NOTES:

- INSPECT BMPs EACH WORKDAY, AND MAINTAIN THEM IN EFFECTIVE OPERATING CONDITION. MAINTENANCE OF BMPs SHOULD BE PROACTIVE, NOT REACTIVE. INSPECT BMPs AS SOON AS POSSIBLE (AND ALWAYS WITHIN 24 HOURS) FOLLOWING A STORM THAT CAUSES SURFACE EROSION, AND PERFORM NECESSARY MAINTENANCE.
- FREQUENT OBSERVATIONS AND MAINTENANCE ARE NECESSARY TO MAINTAIN BMPs IN EFFECTIVE OPERATING CONDITION. INSPECTIONS AND CORRECTIVE MEASURES SHOULD BE DOCUMENTED THOROUGHLY.
- WHERE BMPs HAVE FAILED, REPAIR OR REPLACEMENT SHOULD BE INITIATED UPON DISCOVERY OF THE FAILURE.

Figure EC-8  
Temporary Outlet Protection  
Urban Drainage and Flood Control District  
Urban Storm Drainage Criteria Manual Volume 3

CWA



CONCRETE WASHOUT AREA

CWA INSTALLATION NOTES:

- SEE PLAN VIEW FOR:  
- CWA INSTALLATION LOCATION
- DO NOT LOCATE AN UNLINED CWA WITHIN 400' OF ANY NATURAL DRAINAGE PATHWAY OR WATER BODY. DO NOT LOCATE WITHIN 1000' OF ANY WELLS OR DRINKING WATER SOURCES. IF SITE CONSTRAINTS MAKE THIS INFEASIBLE, OR IF HIGHLY PERMEABLE SOILS EXIST ON SITE, THE CWA MUST BE INSTALLED WITH AN IMPERMEABLE LINER (16 MIL MIN. THICKNESS) OR SURFACE STORAGE ALTERNATIVES USING PREFABRICATED CONCRETE WASHOUT DEVICES OR A LINED ABOVE GROUND STORAGE AREA SHOULD BE USED.
- THE CWA SHALL BE INSTALLED PRIOR TO CONCRETE PLACEMENT ON SITE.
- THE CWA SHALL INCLUDE A FLAT SUBSURFACE PIT THAT IS AT LEAST 8' BY 8'. SLOPES LEADING OUT OF THE SUBSURFACE PIT SHALL BE 3:1 OR FLATTER. THE PIT SHALL BE AT LEAST 3' DEEP.
- BERM SURROUNDING SIDES AND BACK OF THE CWA SHALL HAVE A MINIMUM HEIGHT OF 1'.
- VEHICLE TRACKING PAD SHALL BE SLOPED 2% TOWARDS THE CWA.
- SIGNS SHALL BE PLACED AT THE CONSTRUCTION ENTRANCE, AT THE CWA, AND ELSEWHERE AS NECESSARY TO CLEARLY INDICATE THE LOCATION OF THE CWA TO OPERATORS OF CONCRETE TRUCKS AND PUMP RIGS.
- USE EXCAVATED MATERIAL FOR PERIMETER BERM CONSTRUCTION.

Figure CWA-3  
Concrete Washout Area  
Urban Drainage and Flood Control District  
Urban Storm Drainage Criteria Manual Volume 3