

R:\35059 Orton Pit Drainage Report\Drawings\Construction Documents\35059 GEC1-Batch.dwg, 9/12/2022 6:41:12 AM, Sean Callahan

GRADING AND EROSION CONTROL PLAN ROCK CREEK CANYON PLANT SITE

LOCATED IN THE SOUTHEAST 1/4 OF SECTION 36,
TOWNSHIP 15 SOUTH, RANGE 67 WEST OF THE 6th PRINCIPAL MERIDIAN
EL PASO COUNTY, COLORADO

STANDARD NOTES FOR EL PASO COUNTY GRADING AND EROSION CONTROL PLANS

REVISED JULY 2019

1. STORMWATER DISCHARGES FROM CONSTRUCTION SITES SHALL NOT CAUSE OR THREATEN TO CAUSE POLLUTION, CONTAMINATION, OR DEGRADATION OF STATE WATERS. ALL WORK AND EARTH DISTURBANCE SHALL BE DONE IN A MANNER THAT MINIMIZES POLLUTION OF ANY ON-SITE OR OFFSITE WATERS, INCLUDING WETLANDS.
2. NOTWITHSTANDING ANYTHING DEPICTED IN THESE PLANS IN WORDS OR GRAPHIC REPRESENTATION, ALL DESIGN AND CONSTRUCTION RELATED TO ROADS, STORM DRAINAGE AND EROSION CONTROL SHALL CONFORM TO THE STANDARDS AND REQUIREMENTS OF THE MOST RECENT VERSION OF THE RELEVANT ADOPTED EL PASO COUNTY STANDARDS, INCLUDING THE LAND DEVELOPMENT CODE, THE ENGINEERING CRITERIA MANUAL, THE DRAINAGE CRITERIA MANUAL, AND THE DRAINAGE CRITERIA MANUAL VOLUME 2. ANY DEVIATIONS TO REGULATIONS AND STANDARDS MUST BE REQUESTED, AND APPROVED, IN WRITING.
3. A SEPARATE STORMWATER MANAGEMENT PLAN (SWMP) FOR THIS PROJECT SHALL BE COMPLETED AND AN EROSION AND STORMWATER QUALITY CONTROL PERMIT (ESQCP) ISSUED PRIOR TO COMMENCING CONSTRUCTION. DURING CONSTRUCTION THE SWMP IS THE RESPONSIBILITY OF THE DESIGNATED QUALIFIED STORMWATER MANAGER OR CERTIFIED EROSION CONTROL INSPECTOR AND SHALL BE LOCATED ON SITE AT ALL TIMES DURING CONSTRUCTION AND SHALL BE KEPT UP TO DATE WITH WORK PROGRESS AND CHANGES IN THE FIELD.
4. ONCE THE ESQCP IS APPROVED AND A NOTICE TO PROCEED HAS BEEN ISSUED, THE CONTRACTOR MAY INSTALL THE INITIAL STAGE EROSION AND SEDIMENT CONTROL MEASURES AS INDICATED ON THE APPROVED GEC. A PRECONSTRUCTION MEETING BETWEEN THE CONTRACTOR, ENGINEER, AND EL PASO COUNTY WILL BE HELD PRIOR TO ANY CONSTRUCTION. IT IS THE RESPONSIBILITY OF THE APPLICANT TO COORDINATE THE MEETING TIME AND PLACE WITH COUNTY STAFF.
5. CONTROL MEASURES MUST BE INSTALLED PRIOR TO COMMENCEMENT OF ACTIVITIES THAT MAY CONTRIBUTE POLLUTANTS TO STORMWATER. TEMPORARY SEDIMENT AND EROSION CONTROL MEASURES FOR ALL SLOPES, CHANNELS, DITCHES, OR ANY DISTURBED LAND AREA SHALL BE COMPLETED IMMEDIATELY UPON COMPLETION OF THE DISTURBANCE.
6. ALL TEMPORARY SEDIMENT AND EROSION CONTROL MEASURES SHALL BE MAINTAINED AND REMAIN IN EFFECTIVE OPERATING CONDITION UNTIL PERMANENT SOIL EROSION CONTROL MEASURES ARE IMPLEMENTED AND FINAL STABILIZATION IS ESTABLISHED. ALL PERSONS ENGAGED IN LAND DISTURBANCE ACTIVITIES SHALL ASSESS THE ADEQUACY OF CONTROL MEASURES AT THE SITE AND IDENTIFY IF CHANGES TO THOSE CONTROL MEASURES IS NEEDED TO ENSURE THE CONTINUED EFFECTIVE PERFORMANCE OF THE CONTROL MEASURES. ALL CHANGES TO TEMPORARY SEDIMENT AND EROSION CONTROL MEASURES MUST BE INCORPORATED INTO THE STORMWATER MANAGEMENT PLAN PRIOR TO IMPLEMENTATION.
7. TEMPORARY STABILIZATION SHALL BE IMPLEMENTED ON DISTURBED AREAS AND STOCKPILES WHERE GROUND DISTURBING CONSTRUCTION ACTIVITY HAS PERMANENTLY CEASED OR TEMPORARILY CEASED FOR LONGER THAN 14 DAYS. AN AREA THAT IS GOING TO REMAIN IN AN INTERIM STATE FOR MORE THAN 60 DAYS SHALL ALSO BE STABILIZED.
8. FINAL STABILIZATION MUST BE IMPLEMENTED AT ALL APPLICABLE CONSTRUCTION SITES. FINAL STABILIZATION IS ACHIEVED WHEN ALL GROUND DISTURBING ACTIVITIES ARE COMPLETE AND ALL DISTURBED AREAS EITHER HAVE A UNIFORM VEGETATIVE COVER WITH INDIVIDUAL PLAN DENSITY OF 70 PERCENT OF PRE-DISTURBANCE LEVELS ESTABLISHED OR EQUIVALENT PERMANENT ALTERNATIVE STABILIZATION METHOD IS IMPLEMENTED. ALL TEMPORARY SEDIMENT AND EROSION CONTROL MEASURES SHALL BE REMOVED UPON FINAL STABILIZATION AND BEFORE PERMIT CLOSURE.
9. ALL PERMANENT STORMWATER MANAGEMENT FACILITIES SHALL BE INSTALLED AS DEFINED IN THE APPROVED PLANS. ANY PROPOSED CHANGES THAT EFFECT THE HYDROLOGY OR HYDRAULICS OF A PERMANENT STORMWATER MANAGEMENT STRUCTURES MUST BE APPROVED BY THE ECM ADMINISTRATOR PRIOR TO IMPLEMENTATION.
10. ANY EARTH DISTURBANCE SHALL BE CONDUCTED IN SUCH A MANNER SO AS TO EFFECTIVELY MINIMIZE ACCELERATED SOIL EROSION AND RESULTING SEDIMENTATION. ALL DISTURBANCES SHALL BE DESIGNED, CONSTRUCTED, AND COMPLETED SO THAT THE EXPOSED AREA OF ANY DISTURBED LAND SHALL BE LIMITED TO THE SHORTEST PRACTICAL PERIOD OF TIME. PRE-EXISTING VEGETATION SHALL BE PROTECTED AND MAINTAINED WITHIN 50 HORIZONTAL FEET OF A WATERS OF THE STATE, UNLESS INFEASIBLE.
11. COMPACTION OF SOIL MUST BE PREVENTED IN AREAS DESIGNATED FOR INFILTRATION CONTROL MEASURES OR WHERE FINAL STABILIZATION WILL BE ACHIEVED BY VEGETATIVE COVER. AREAS DESIGNATED FOR INFILTRATION CONTROL SHALL ALSO BE PROTECTED FROM SEDIMENTATION DURING CONSTRUCTION UNTIL FINAL STABILIZATION IS ACHIEVED.
12. ANY TEMPORARY OR PERMANENT FACILITY DESIGNED AND CONSTRUCTED FOR THE CONVEYANCE OF STORMWATER AROUND, THROUGH, OR FROM THE EARTH DISTURBANCE AREA SHALL BE A STABILIZED CONVEYANCE DESIGNED TO MINIMIZE EROSION AND THE DISCHARGE OF SEDIMENT OFF SITE.
13. CONCRETE WASH WATER SHALL BE CONTAINED AND DISPOSED OF IN ACCORDANCE WITH THE NO WASH WATER SHALL BE DISCHARGED TO OR ALLOWED TO RUNOFF TO STATE WATERS, INCLUDING ANY SURFACE OR SUBSURFACE STORM DRAINAGE SYSTEM OR FACILITIES. CONCRETE WASHOUT SHALL NOT BE LOCATED IN AN AREA WHERE SHALLOW GROUNDWATER MAY BE PRESENT, OR WITHIN 50 FEET OF A SURFACE WATER BODY.
14. DEWATERING OPERATIONS: UNCONTAMINATED GROUND WATER MAY BE DISCHARGED ON SITE, BUT MAY NOT LEAVE THE SITE IN THE FORM OF SURFACE RUNOFF.
15. EROSION CONTROL BLANKETING IS TO BE USED ON SLOPES STEEPER THAN 3:1.
16. CONTRACTOR SHALL BE RESPONSIBLE FOR THE REMOVAL OF ALL WASTE FROM THE CONSTRUCTION SITE FOR DISPOSAL IN ACCORDANCE WITH LOCAL AND STATE REGULATORY REQUIREMENTS. NO CONSTRUCTION DEBRIS, TREE SLASH, BUILDING MATERIAL WASTES OR UNUSED BUILDING MATERIALS SHALL BE BURIED, DUMPED, OR DISCHARGED AT THE SITE.
17. WASTE MATERIALS SHALL NOT BE TEMPORARILY PLACED OR STORED IN THE STREET, ALLEY, OR OTHER PUBLIC WAY, UNLESS IN ACCORDANCE WITH AN APPROVED TRAFFIC CONTROL PLAN. CONTROL MEASURES MAY BE REQUIRED BY EL PASO COUNTY ENGINEERING IF DEEMED NECESSARY, BASED ON SPECIFIC CONDITIONS AND CIRCUMSTANCES.
18. TRACKING OF SOILS AND CONSTRUCTION DEBRIS OFF-SITE SHALL BE MINIMIZED. MATERIALS TRACKED OFF-SITE SHALL BE CLEANED UP AND PROPERLY DISPOSED OF IMMEDIATELY.
19. THE OWNER/DEVELOPER SHALL BE RESPONSIBLE FOR THE REMOVAL OF ALL CONSTRUCTION DEBRIS, DIRT, TRASH, ROCK, SEDIMENT, SOIL, AND SAND THAT MAY ACCUMULATE IN ROADS, STORM DRAINS AND OTHER DRAINAGE CONVEYANCE SYSTEMS AND STORMWATER APPURTENANCES AS A RESULT OF SITE DEVELOPMENT.
20. THE QUANTITY OF MATERIALS STORED ON THE PROJECT SITE SHALL BE LIMITED, AS MUCH AS PRACTICAL, TO THAT QUANTITY REQUIRED TO PERFORM THE WORK IN AN ORDERLY SEQUENCE. ALL MATERIALS STORED ON-SITE SHALL BE STORED IN A NEAT, ORDERLY MANNER, IN THEIR ORIGINAL CONTAINERS, WITH ORIGINAL MANUFACTURER'S LABELS.
21. NO CHEMICALS ARE TO BE USED BY THE CONTRACTOR, WHICH HAVE THE POTENTIAL TO BE RELEASED IN STORMWATER UNLESS PERMISSION FOR THE USE OF A SPECIFIC CHEMICAL IS GRANTED IN WRITING BY THE ECM ADMINISTRATOR. IN GRANTING THE USE OF SUCH CHEMICALS, SPECIAL CONDITIONS AND MONITORING MAY BE REQUIRED.
22. BULK STORAGE OF PETROLEUM PRODUCTS OR OTHER LIQUID CHEMICALS IN EXCESS OF 55 GALLONS SHALL HAVE ADEQUATE SECONDARY CONTAINMENT PROTECTION TO CONTAIN ALL SPILLS AND PREVENT ANY SPILLED MATERIAL FROM ENTERING STATE WATERS, INCLUDING ANY SURFACE OR SUBSURFACE STORM DRAINAGE SYSTEM OR FACILITIES.
23. NO PERSON SHALL CAUSE THE IMPEDIMENT OF STORMWATER FLOW IN THE FLOW LINE OF THE CURB AND GUTTER OR IN THE DITCH FLOW LINE.
24. INDIVIDUALS SHALL COMPLY WITH THE "COLORADO WATER QUALITY CONTROL ACT" (TITLE 25, ARTICLE 8, CRS), AND THE "CLEAN WATER ACT" (33 USC 1344), IN ADDITION TO THE REQUIREMENTS INCLUDED IN THE DCM VOLUME II AND THE ECM APPENDIX I. ALL APPROPRIATE PERMITS MUST BE OBTAINED BY THE CONTRACTOR PRIOR TO CONSTRUCTION (NPDES, FLOODPLAIN, 404, FUGITIVE DUST, ETC.). IN THE EVENT OF CONFLICTS BETWEEN THESE REQUIREMENTS AND LAWS, RULES, OR REGULATIONS OF OTHER FEDERAL, STATE, OR COUNTY AGENCIES, THE MORE RESTRICTIVE LAWS, RULES, OR REGULATIONS SHALL APPLY.
25. ALL CONSTRUCTION TRAFFIC MUST ENTER/EXIT THE SITE AT APPROVED CONSTRUCTION ACCESS POINTS.
26. PRIOR TO ACTUAL CONSTRUCTION THE PERMITEE SHALL VERIFY THE LOCATION OF EXISTING UTILITIES.
27. A WATER SOURCE SHALL BE AVAILABLE ON SITE DURING EARTHWORK OPERATIONS AND UTILIZED AS REQUIRED TO MINIMIZE DUST FROM EARTHWORK EQUIPMENT AND WIND.
28. THE SOILS REPORT FOR THIS SITE HAS BEEN PREPARED BY TRAVIS BELL (CRC OF COLO LLC) IN COOPERATION WITH GROUND ENGINEERING DATED 5/24/22 AND SHALL BE CONSIDERED A PART OF THESE PLANS.
29. AT LEAST TEN (10) DAYS PRIOR TO THE ANTICIPATED START OF CONSTRUCTION, FOR PROJECTS THAT WILL DISTURB 1 ACRE OR MORE, THE OWNER OR OPERATOR OF CONSTRUCTION ACTIVITY SHALL SUBMIT A PERMIT APPLICATION FOR STORMWATER DISCHARGE TO THE COLORADO DEPARTMENT OF PUBLIC HEALTH AND ENVIRONMENT, WATER QUALITY DIVISION. THE APPLICATION CONTAINS CERTIFICATION OF COMPLETION OF A STORMWATER MANAGEMENT PLAN (SWMP), OF WHICH THIS GRADING AND EROSION CONTROL PLAN MAY BE A PART. FOR INFORMATION OR APPLICATION MATERIALS CONTACT:

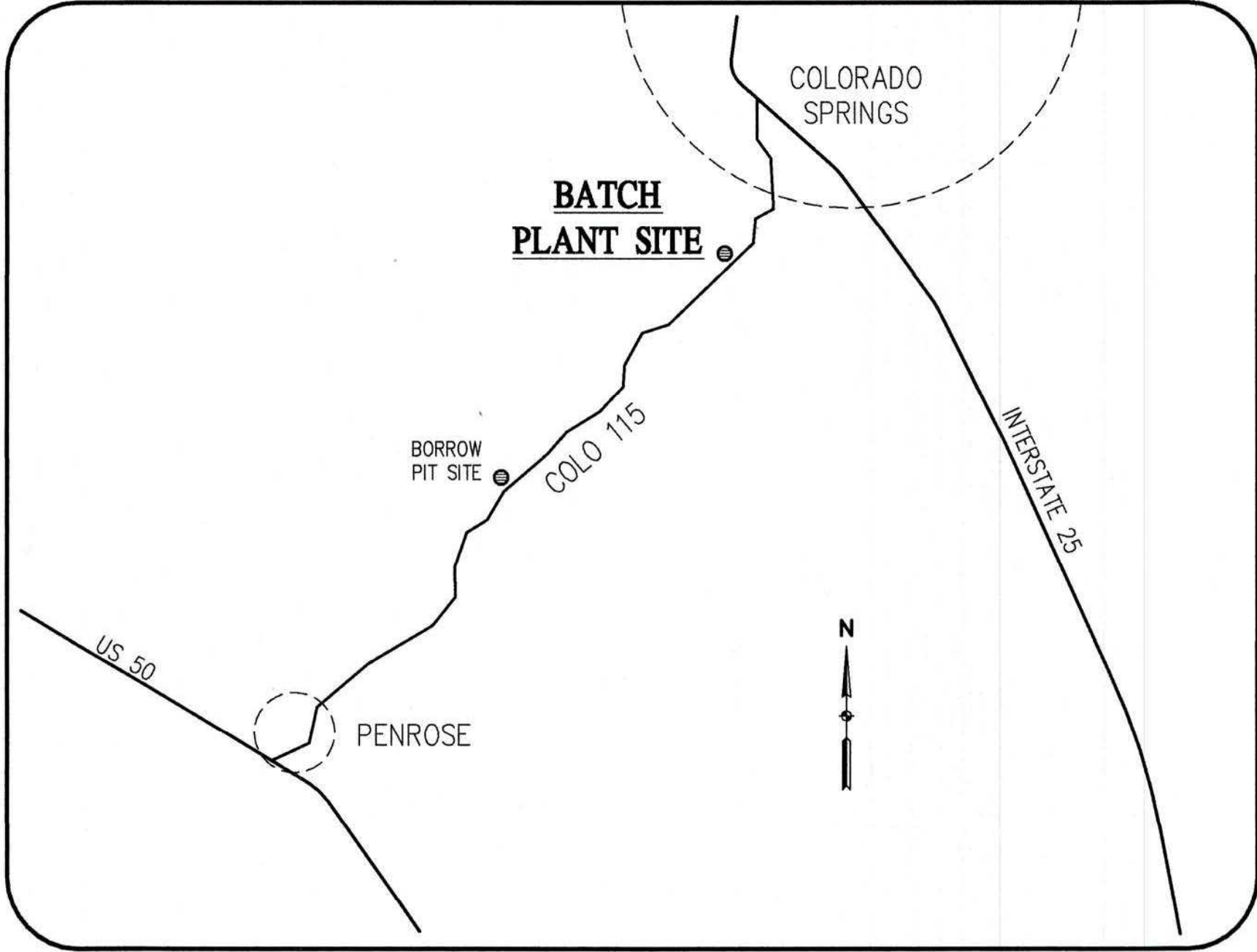
COLORADO DEPARTMENT OF PUBLIC HEALTH AND ENVIRONMENT
WATER QUALITY CONTROL DIVISION
WOOD - PERMITS
4300 CHERRY CREEK DRIVE SOUTH
DENVER, CO 80246-1530
ATTN: PERMITS UNIT



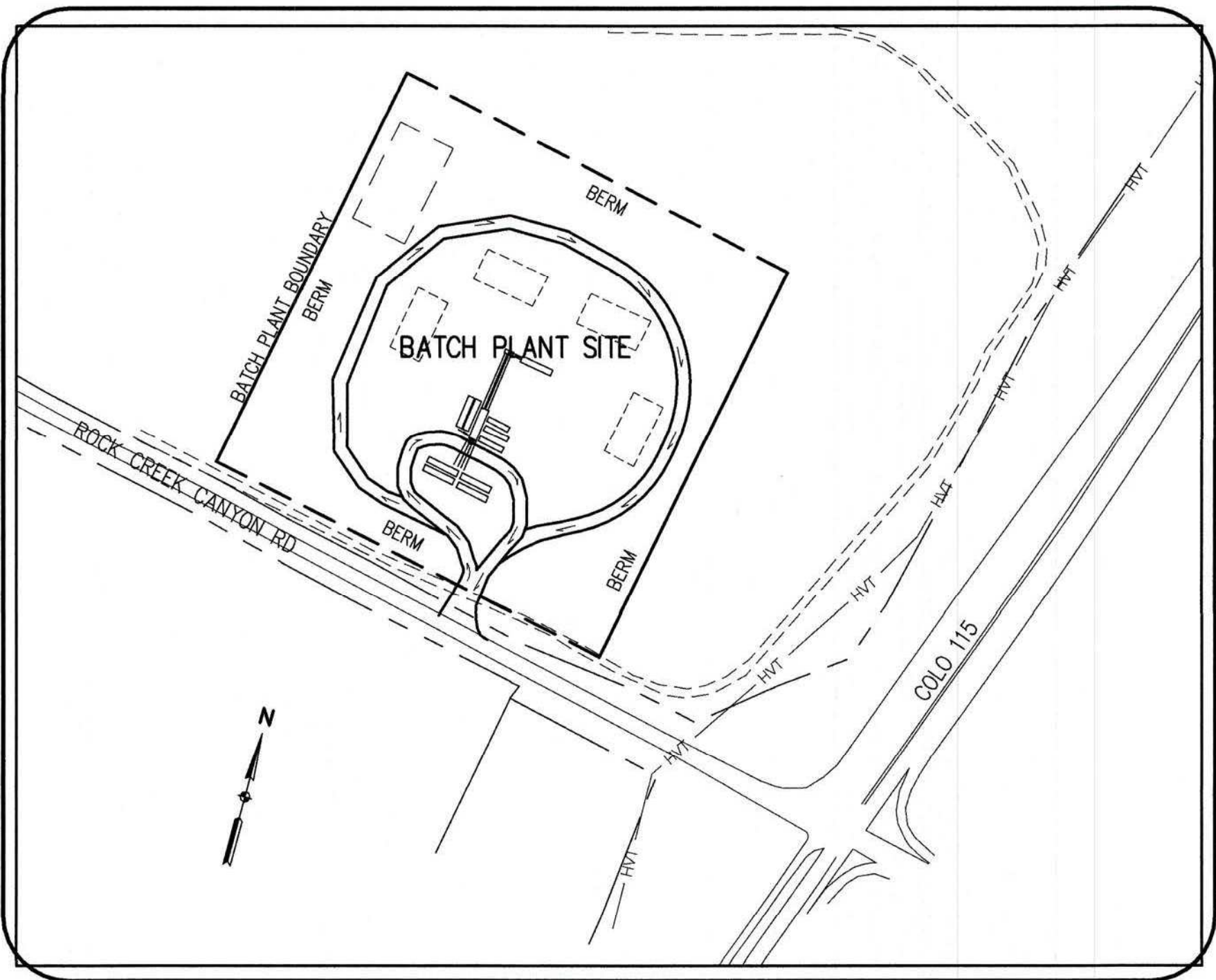
Know what's below.
Call before you dig.

SHEET INDEX

- | | |
|-------|--------------------|
| GEC-1 | COVER SHEET |
| GEC-2 | INITIAL PHASE PLAN |
| GEC-3 | INTERIM PHASE PLAN |
| GEC-4 | FINAL PHASE PLAN |
| GEC-5 | DETAILS |

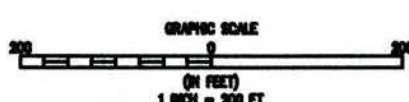


VICINITY MAP
NOT TO SCALE



SITE MAP

SCALE: 1" = 200'



PROJECT CONTACTS

OWNER:
GOLDEN EAGLE RANCH, LLC
710 ROCK CREEK CANYON RD
COLORADO SPRINGS, CO 80926-9800

APPLICANT:
CASTLE ROCK CONSTRUCTION OF COLORADO, LLC
6374 S. RACINE CIRCLE
CENTENNIAL, CO 80111
ATTN: TRAVIS BELL
303-688-6611
TBELL@CRCCLLC.COM

ENGINEER:
BASELINE ENGINEERING CORPORATION
1046 ELKTON DRIVE
COLORADO SPRINGS, CO 80907
ATTN: STEVEN BAGGS, P.E.
719-531-6200
STEVEN.BAGGS@BASELINECORP.COM

ENGINEER'S STATEMENT

THIS GRADING AND EROSION CONTROL PLAN WAS PREPARED UNDER MY DIRECTION AND SUPERVISION AND IS CORRECT TO THE BEST OF MY KNOWLEDGE AND BELIEF. SAID PLAN HAS BEEN PREPARED ACCORDING TO THE CRITERIA ESTABLISHED BY THE COUNTY FOR GRADING AND EROSION CONTROL PLANS. I ACCEPT RESPONSIBILITY FOR ANY LIABILITY CAUSED BY ANY NEGLIGENT ACTS, ERRORS OR OMISSIONS ON MY PART IN PREPARING THIS PLAN.

STEVEN G. BAGGS, P.E.
COLO PE NO. 26020
DATE 10/19/22

OWNER/DEVELOPER STATEMENT

I, THE OWNER/DEVELOPER, HAVE READ AND WILL COMPLY WITH THE REQUIREMENTS OF THE GRADING AND EROSION CONTROL PLAN.

Travis Bell
OWNER SIGNATURE
DATE

EL PASO COUNTY

COUNTY PLAN REVIEW IS PROVIDED ONLY FOR GENERAL CONFORMANCE WITH THE COUNTY DESIGN CRITERIA. THE COUNTY IS NOT RESPONSIBLE FOR THE ACCURACY AND ADEQUACY OF THE DESIGN, AND/OR ELEVATIONS WHICH SHALL BE CONFIRMED AT THE JOB SITE. THE COUNTY THROUGH THE APPROVAL OF THIS DOCUMENT ASSUMES NO RESPONSIBILITY FOR COMPLETENESS AND/OR ACCURACY OF THIS DOCUMENT. FILED IN ACCORDANCE WITH THE REQUIREMENTS OF THE EL PASO COUNTY LAND DEVELOPMENT CODE, DRAINAGE CRITERIA MANUAL VOLUMES 1 AND 2, AND ENGINEERING CRITERIA MANUAL AS AMENDED.

IN ACCORDANCE WITH ECM SECTION 1.12, THESE CONSTRUCTION DOCUMENTS WILL BE VALID FOR CONSTRUCTION FOR A PERIOD OF 2 YEARS FROM THE DATE SIGNED BY THE EL PASO COUNTY ENGINEER. IF CONSTRUCTION HAS NOT STARTED WITHIN THOSE 2 YEARS, THE PLANS WILL NEED TO BE RESUBMITTED FOR APPROVAL, INCLUDING PAYMENT OF REVIEW FEES AT THE PLANNING AND COMMUNITY DEVELOPMENT DIRECTOR'S DISCRETION.

APPROVED
Engineering Department
10/31/2022 9:46:29 AM

JOSHUA PALMER, P.E.
COUNTY ENGINEER/ECM ADMINISTRATOR
EPC Planning & Community Development Department

BASELINE

Engineering - Planning - Surveying

1046 ELKTON DRIVE - COLORADO SPRINGS, COLORADO 80907
P: 719.531.6200 • F: 719.531.6206 • www.baselinecorp.com

DESIGNED BY SPC
DRAWN BY SPC
CHECKED BY SGB

DATE 09/09/2022

PREPARED BY SPC

REVISION DESCRIPTION
REVISED PER COUNTY COMMENTS

CASTLE ROCK CONSTRUCTION COMPANY
UNINCORPORATED
EL PASO COUNTY
GRADING AND EROSION CONTROL PLAN
ROCK CREEK CANYON BATCH SITE - 710 ROCK CREEK CANYON RD
COVER SHEET

PREPARED UNDER THE DIRECT SUPERVISION OF



FOR AND ON BEHALF OF
BASELINE CORPORATION

INITIAL SUBMITTAL 07/12/22

DRAWING SIZE 24" X 36"

SURVEY FIRM SURVEY DATE

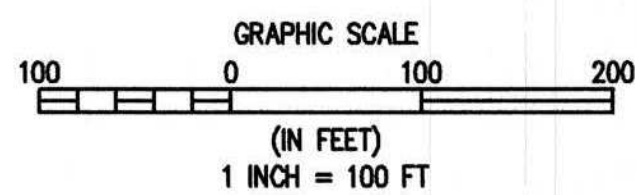
UNKNOWN

JOB NO. 35059

DRAWING NAME 35059 GEC1-Batch.dwg

SHEET 1 OF 5

GEC-1



(LOC)	LIMITS OF CONSTRUCTION/DISTURBANCE
(VTC)	VEHICLE TRACKING CONTROL
(CWA)	CONCRETE WASHOUT
(SF)	SILT FENCE
(ED)	EARTH DIKE
(SP)	STOCKPILE PROTECTION
(TSB)	TEMP. SEDIMENT BASIN
(SSA)	STABILIZED STAGING AREA
(RS)	ROCK SOCK
(SM)	NATIVE SEEDING & MULCHING

1046 ELKTON DRIVE • COLORADO SPRINGS, COLORADO 80901
P: 719.5316200 • F: 719.5316266 • www.baselinerecorp.com

GE

EPC 10/31/2022



LEGEND

EXISTING LINETYPES

Legend for existing linetypes:

- Solid black line
- Long dashed black line
- Short dashed black line with "81" in the center
- Long dashed black line with "5280" in the center
- Dashed black line
- Dashed black line
- Line with "x" markers
- Thick dashed black line
- Line with "HVT" labels

PROPOSED LINETYPES

Legend for proposed linetypes:

- Dashed black line
- Long dashed black line
- Short dashed black line with "81" in the center
- Long dashed black line with "5280" in the center
- Dashed black line
- Dashed black line
- Line with "x" markers
- Thick dashed black line
- Line with "HVT" labels

PROPERTY BOUNDARY

RIGHT-OF-WAY

MINOR CONTOUR (2' INTERVAL)

MAJOR CONTOUR (10' INTERVAL)

EDGE OF ASPHALT

EDGE OF GRAVEL

WIRE FENCE

LIMITS OF CONSTRUCTION

HIGH VOLTAGE TRANSMISSION

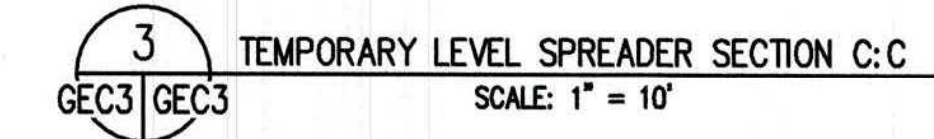
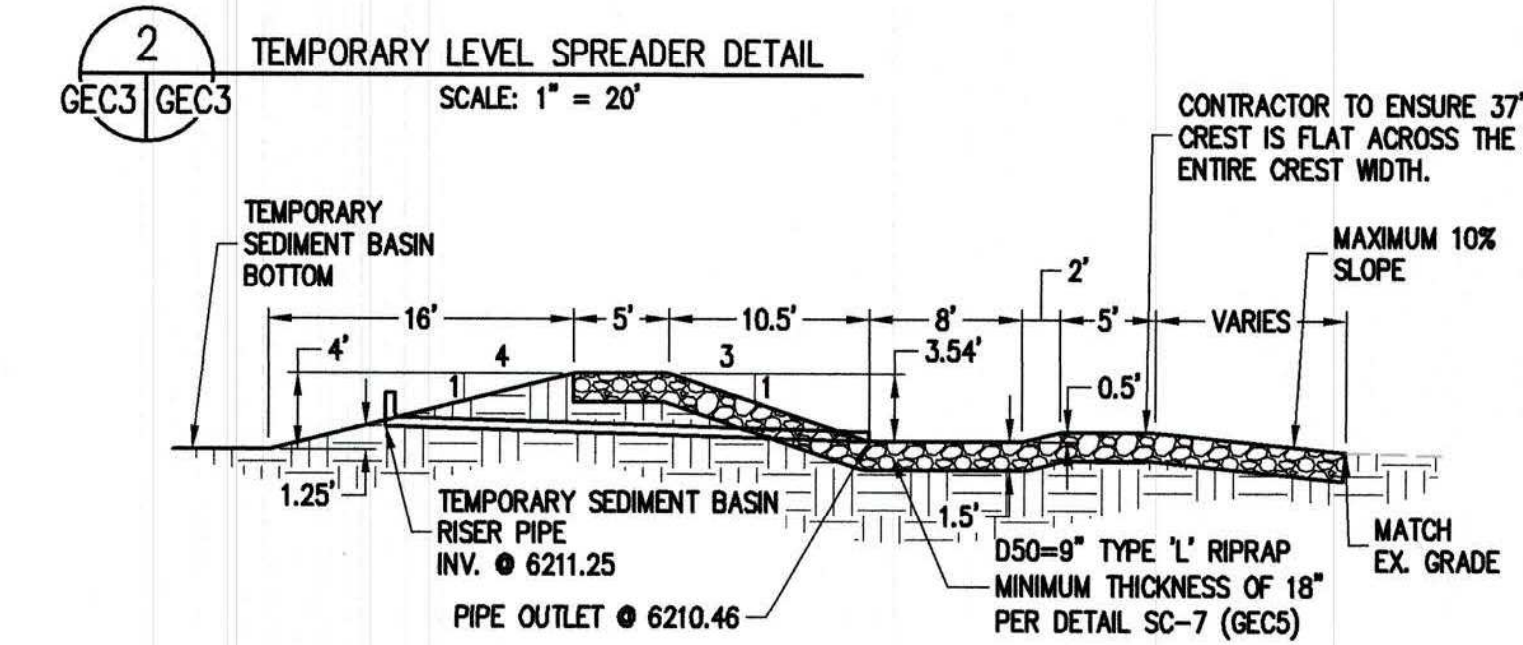
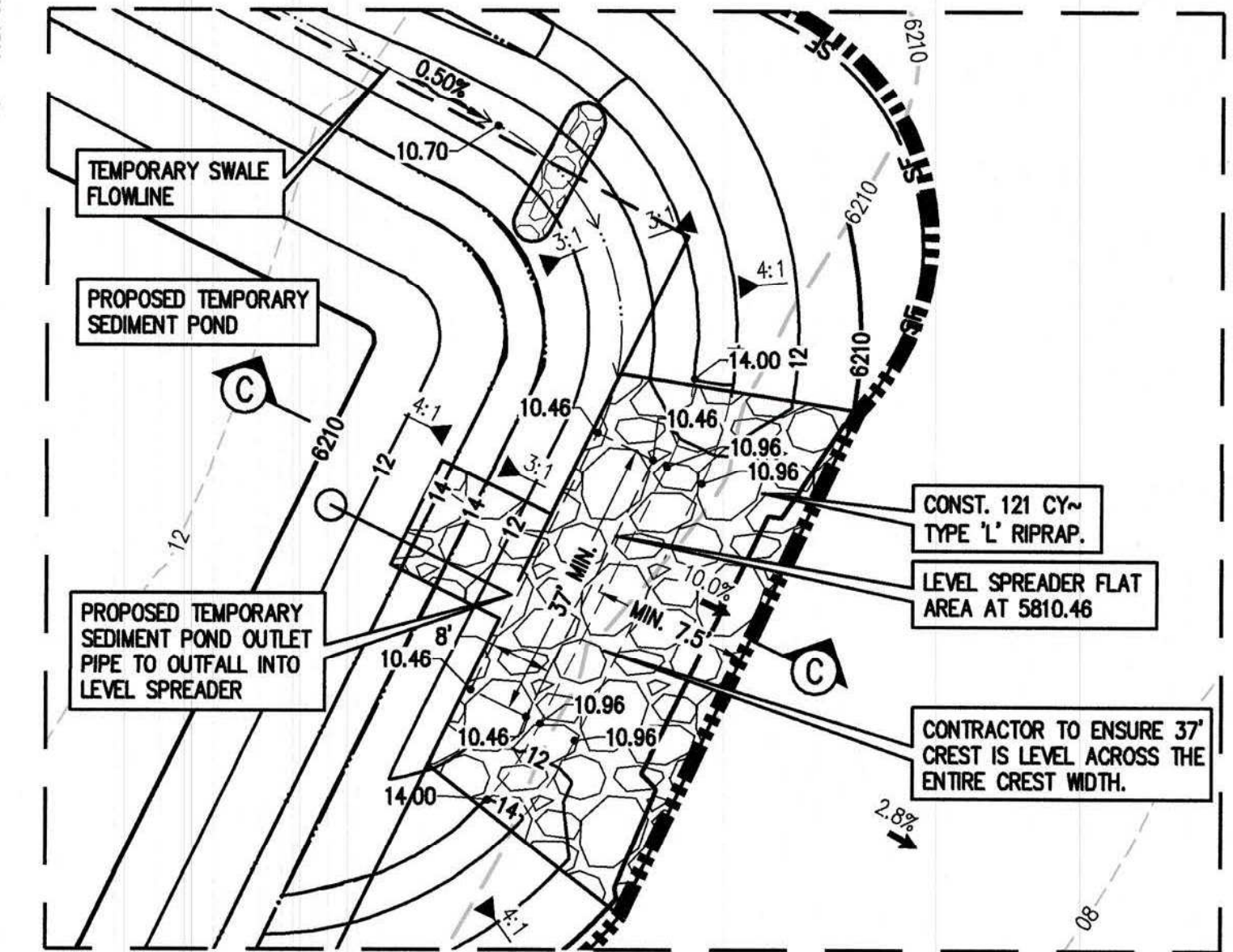
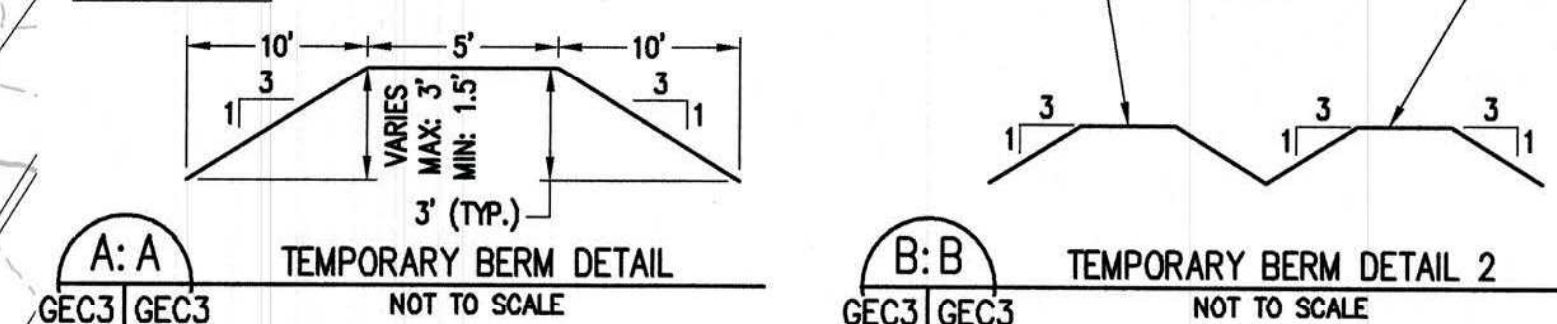
EXISTING SYMBOLS

PROPOSED SYMBOLS

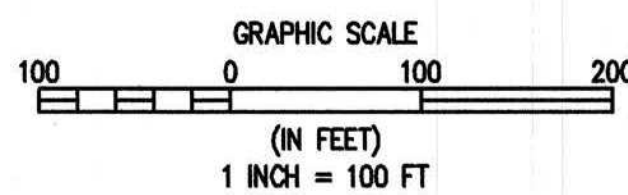
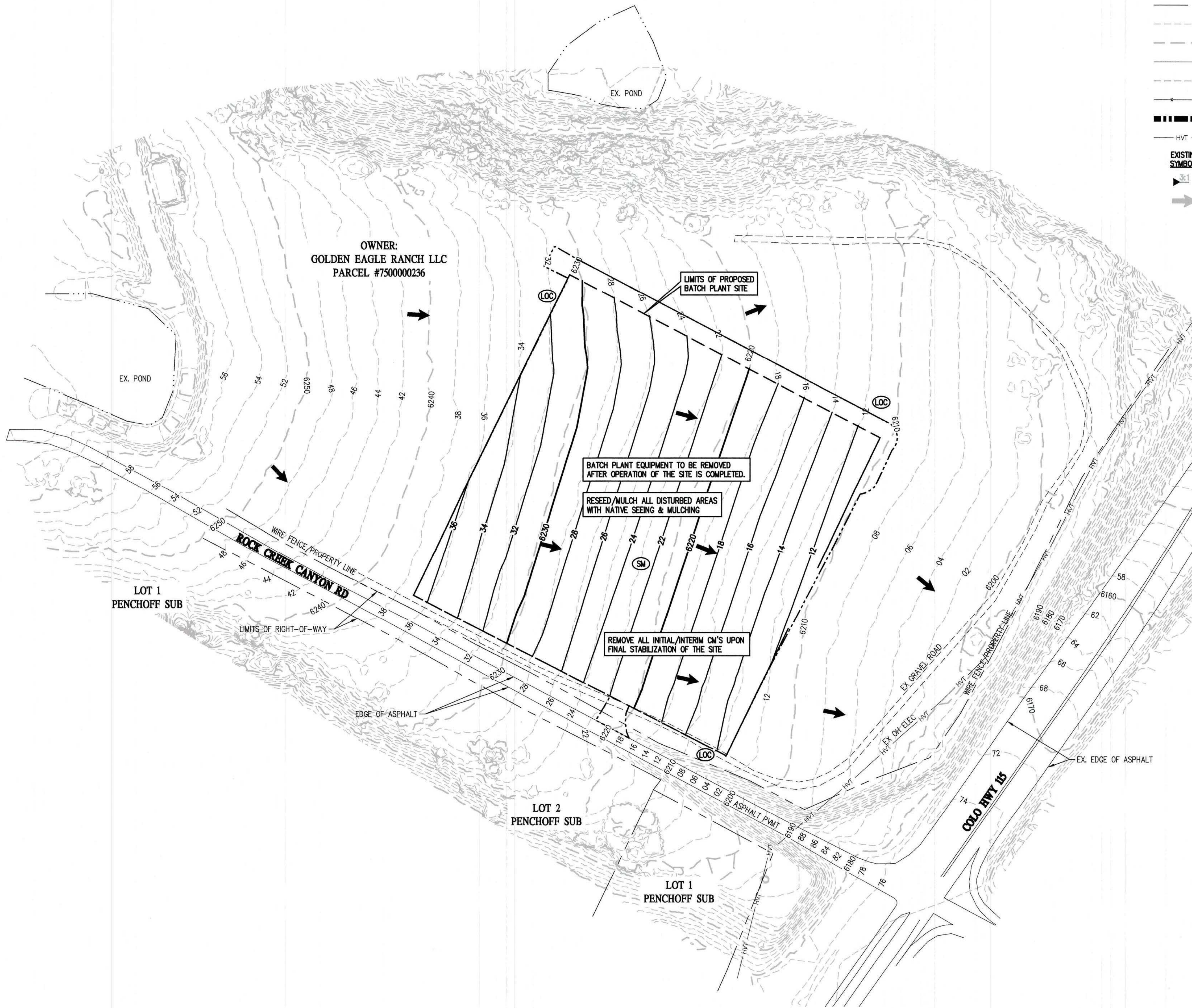
NOMINAL SLOPE ON CUT OR FILL

FLOW DIRECTION, TYPICALLY ON PAVED SURFACES

PHASE	PROPOSED SYMBOLS	
INITIAL/INTERIM		(LOC) LIMITS OF CONSTRUCTION/DISTURBANCE
INITIAL/INTERIM		(VTC) VEHICLE TRACKING CONTROL
INITIAL/INTERIM		(CWA) CONCRETE WASHOUT
INITIAL/INTERIM		(SF) SILT FENCE
INITIAL/INTERIM		(ED) EARTH DIKE
INITIAL/INTERIM		(SP) STOCKPILE PROTECTION
INITIAL/INTERIM		(TSB) TEMP. SEDIMENT BASIN
INITIAL/INTERIM		(SSA) STABILIZED STAGING AREA
INITIAL/INTERIM		(RS) ROCK SOCK
FINAL		(SM) NATIVE SEEDING & MULCHING



EPC 10/31/2022



1
GEC4 GEC4

FINAL PHASE

LEGEND

EXISTING LINETYPES		PROPOSED LINETYPES		
				PROPERTY BOUNDARY
	81		81	RIGHT-OF-WAY
	5280		5280	MINOR CONTOUR (2' INTERVAL)
				MAJOR CONTOUR (10' INTERVAL)
				EDGE OF ASPHALT
				EDGE OF GRAVEL
				WIRE FENCE
				LIMITS OF CONSTRUCTION
	HVT		HVT	HIGH VOLTAGE TRANSMISSION
	3:1		3:1	NOMINAL SLOPE ON CUT OR FILL
				FLOW DIRECTION, TYPICALLY ON PAVED SURFACES

GEC LEGEND

PHASE	PROPOSED SYMBOLS	
INITIAL/INTERIM		LOC LIMITS OF CONSTRUCTION/DISTURBANCE
INITIAL/INTERIM		VTC VEHICLE TRACKING CONTROL
INITIAL/INTERIM		CWA CONCRETE WASHOUT
INITIAL/INTERIM		SF SILT FENCE
INITIAL/INTERIM		ED EARTH DIKE
INITIAL/INTERIM		SP STOCKPILE PROTECTION
INITIAL/INTERIM		TSB TEMP. SEDIMENT BASIN
INITIAL/INTERIM		SSA STABILIZED STAGING AREA
INITIAL/INTERIM		RS ROCK SOCK
INITIAL/INTERIM		SM NATIVE SEEDING & MULCHING
FINAL		

BASELINE

Engineering - Planning - Surveying
1946 ELKTON DRIVE - COLORADO SPRINGS, COLORADO 80907
P: 719.531.6266 F: 719.531.6266

DESIGNED BY SPC
DRAWN BY SPC
CHECKED BY SGB

DATE 09/09/2022

PREPARED BY SPC

REVISION DESCRIPTION
REVISED PER COUNTY COMMENTS

EL PASO COUNTY

UNINCORPORATED

GRADING AND EROSION CONTROL PLAN

ROCK CREEK CANYON BATCH SITE - 710 ROCK CREEK CANYON RD

FINAL PHASE

FOR AND ON BEHALF OF
BASELINE CORPORATION

INITIAL SUBMITTAL 07/12/22

DRAWING SIZE 24" X 36"

SURVEY FIRM UNKNOWN

SURVEY DATE UNKNOWN

JOB NO. 35059

DRAWING NAME GEC2-5 Batch.dwg

SHEET 4 OF 5

GEC4

