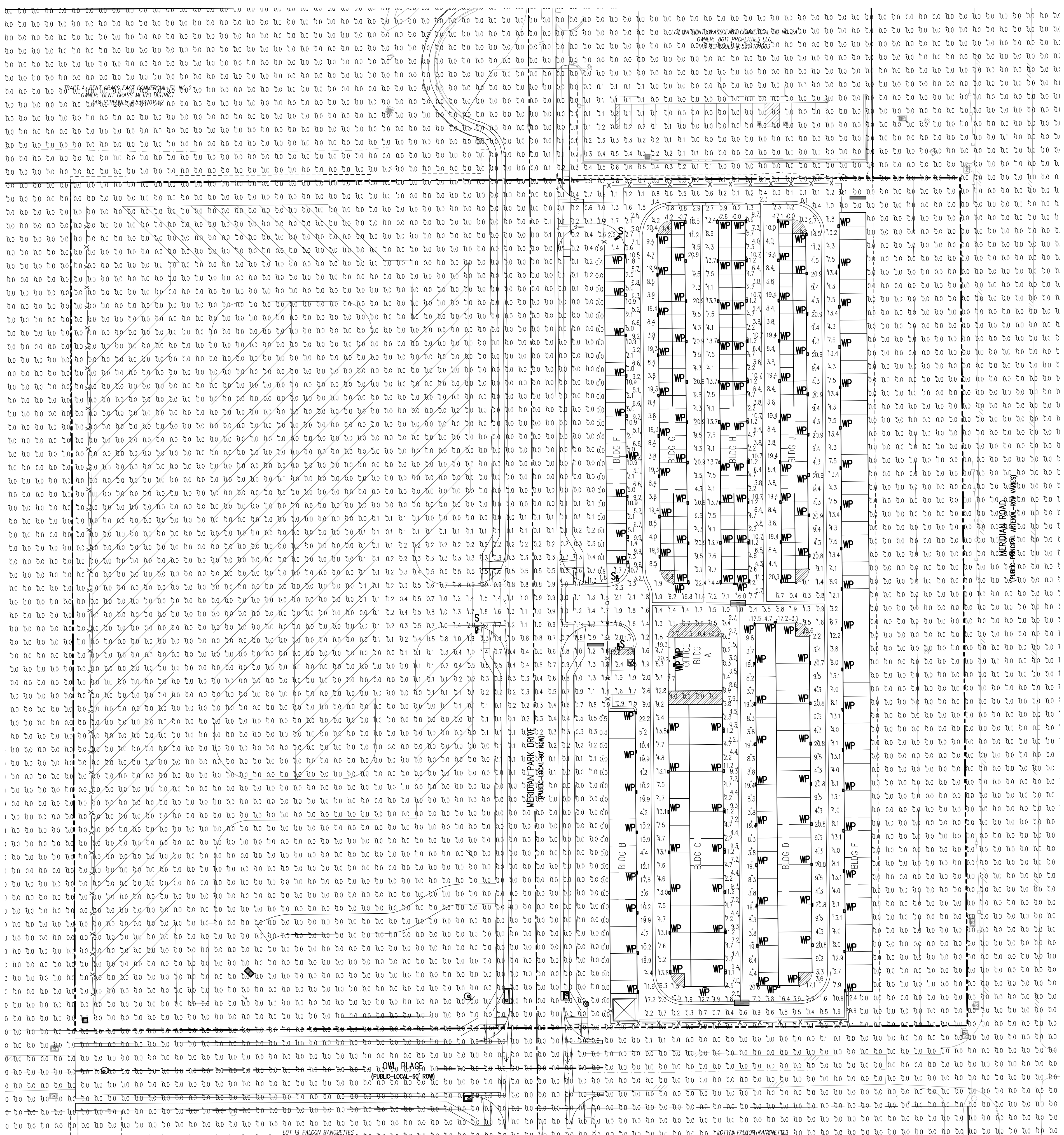




Table with 4 columns: #, Date, Issue / Description, Init.

Project No: MRS01
Drawn By: ASA
Checked By: BAS
Date: 09/08/2023

PHOTOMETRIC PLAN AND
DETAILS



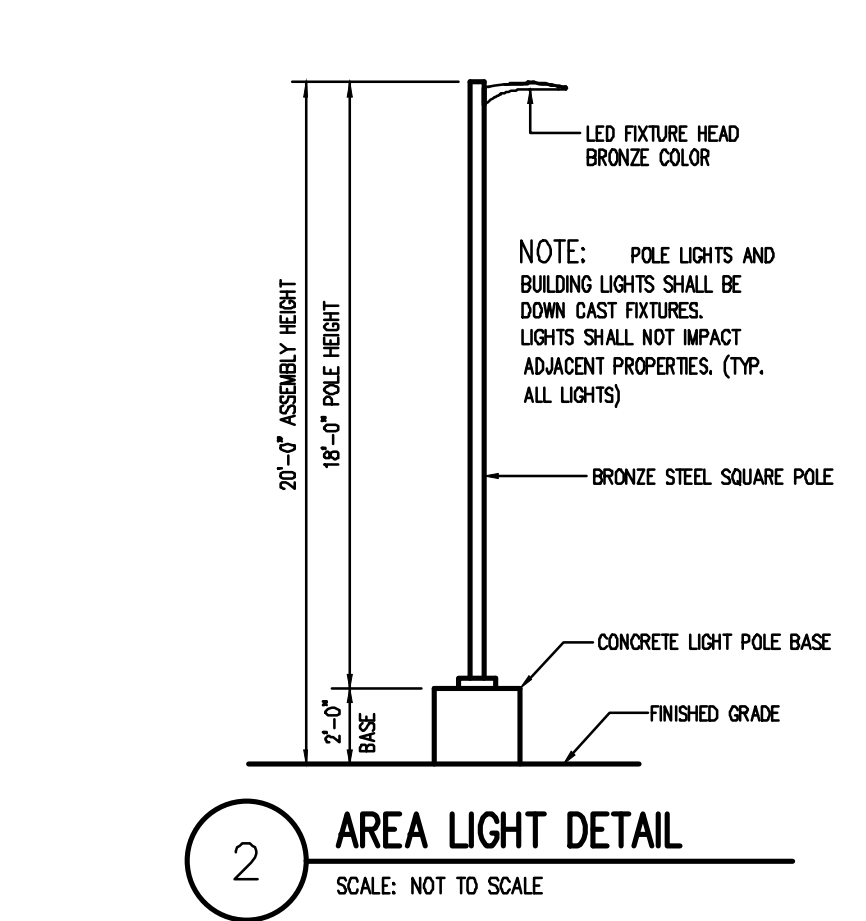
D-Series Size 0 LED Area Luminaire
Specifications: Length: 6.54 ft, Width: 26.18", Height: 14.58", Weight: 23.38 lbs.
Introduction: The modern styling of the D-Series features a highly refined aesthetic that blends seamlessly with any environment.

WST LED Architectural Wall Scape
Specifications: Length: 6.52", Width: 17", Height: 10.54", Weight: 20 lbs.
Introduction: The WST LED is designed with the grid-in mind. The traditional, recessed shape offers a soft, non-glaring light source for ambient visual comfort.

Ordering Information table with columns: Item, Qty, Description, Unit, Price, Total Price.

Ordering Information table with columns: Item, Qty, Description, Unit, Price, Total Price.

LUMINAIRE SCHEDULE table with columns: MARK, QTY, LABEL, MOUNTING, ARRANGEMENT, LLF, CATALOG NUMBER, DESCRIPTION, LUMENS, WATTS.



Freestanding light poles shall only be 20 ft tall when in parking lots, are these associated within parking lots?