



YOW Architects PC

Architecture & Planning

115 S. Weber Colorado Springs, Colorado 719-475-8133

Revision Schedule

NOT FOR CONSTRUCTION

Meridian Self Storage Facility -
TYPICAL EXTERIOR BUILDING

DEVELOPMENT PLAN

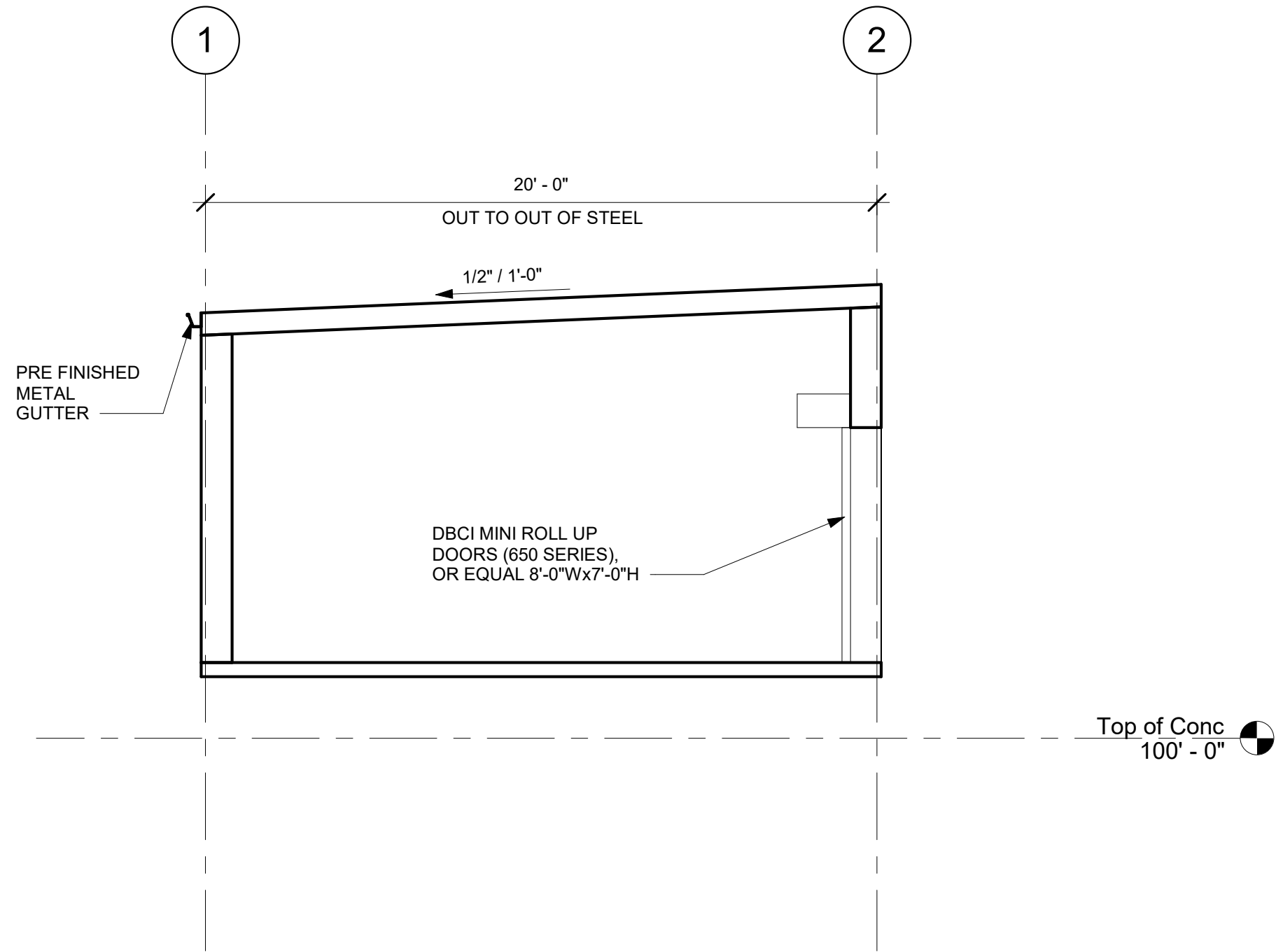
Project Number
23.071

Date
9.7.2023

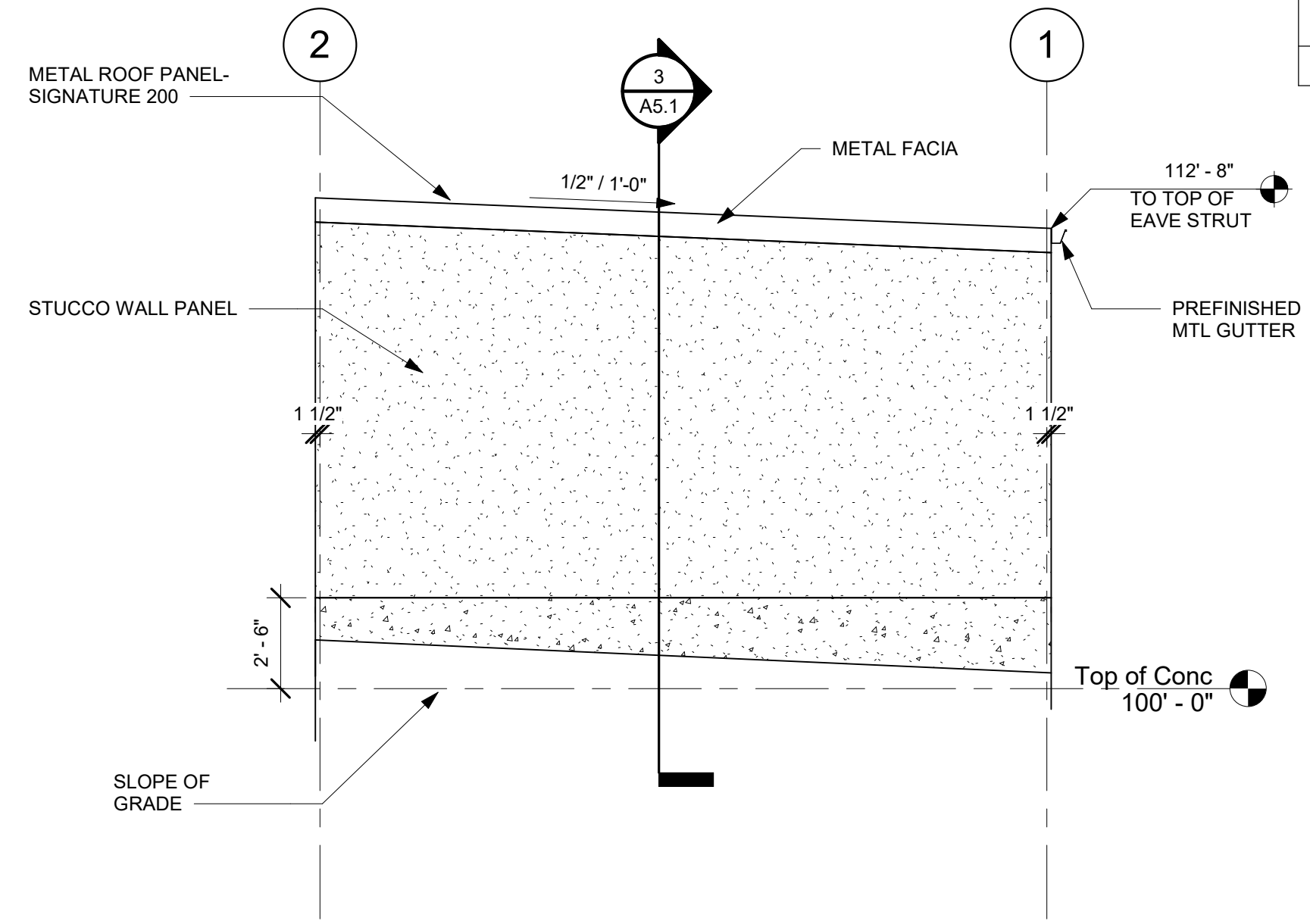
Drawn By
JB/ATT
Checked By
YOW

A5.1
Building Elevations & Sections
Scale
As indicated

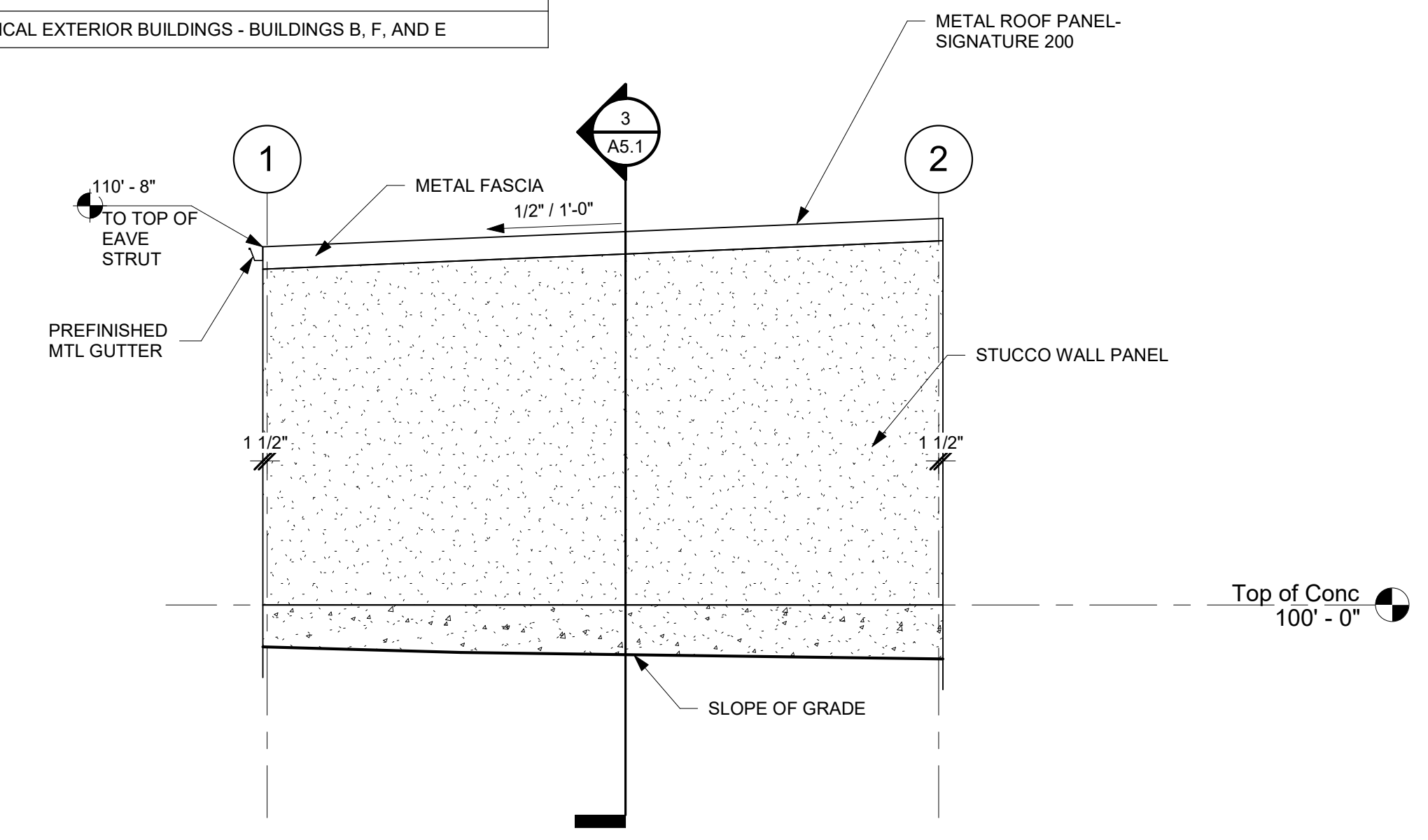
| MATERIAL COLOR PALETTE | |
|--|--|
| - WALL PANEL - WILL BE A STUCCO FINISH PANEL FROM THE P.E.M.B. SUPPLIER IN TAN/BEIGE COLOR RANGE | |
| - METAL ROOF PANEL - DARK TAN/BEIGE COLOR RANGE | |
| - METAL TRIM - DARK TAN COLOR RANGE | |
| - GARAGE DOORS - RED | |
| - ROOF METAL PANELS - SIGNATURE 200 METAL PANEL BY P.E.M.B. | |
| - WALL PANELS - STUCCO FINISH PANEL BY P.E.M.B. | |
| TYPICAL EXTERIOR BUILDINGS - BUILDINGS B, F, AND E | |



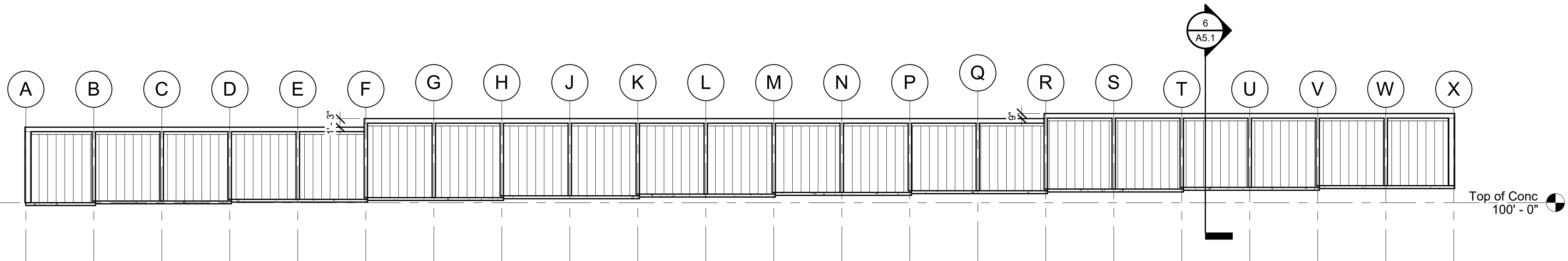
6 Building Section
1/4" = 1'-0"



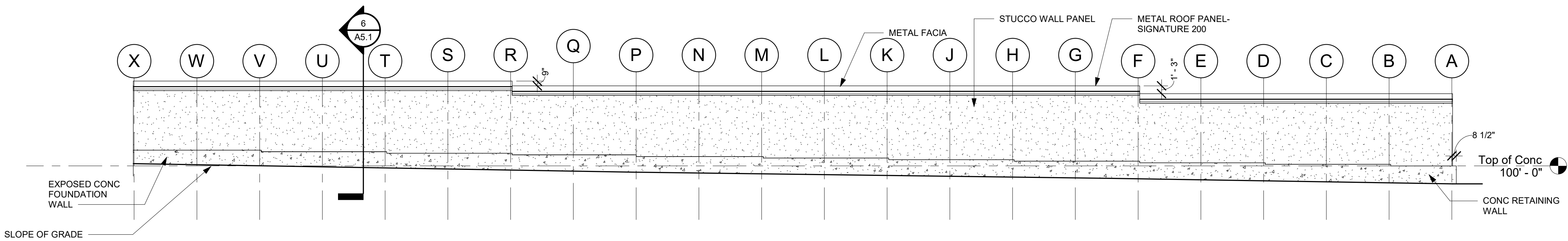
5 Side Wall Elevation - North
1/4" = 1'-0"



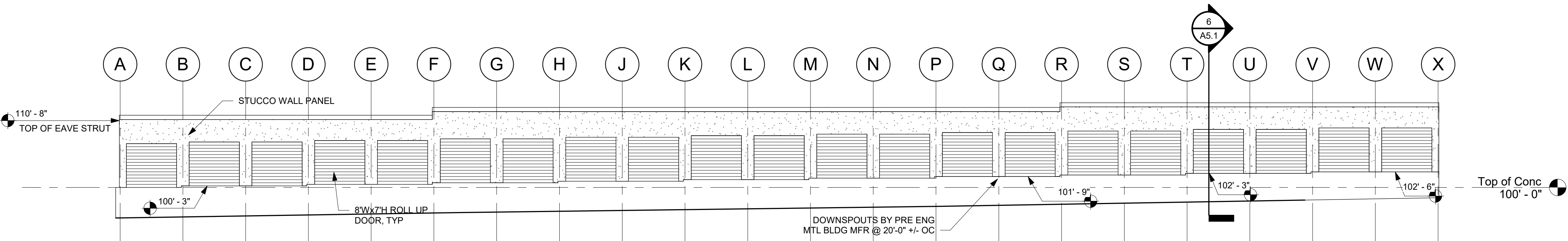
4 Side Wall Elevation - South
1/4" = 1'-0"



3 Building Section 1
3/32" = 1'-0"



2 Back Wall Elevation - Northwest
3/32" = 1'-0"



1 Front Wall Elevation - Southeast
3/32" = 1'-0"

9/7/2023 3:43:36 PM



YOW Architects PC
 Architecture & Planning
 115 S. Weber Colorado Springs, Colorado 719-475-8133

NOT FOR CONSTRUCTION

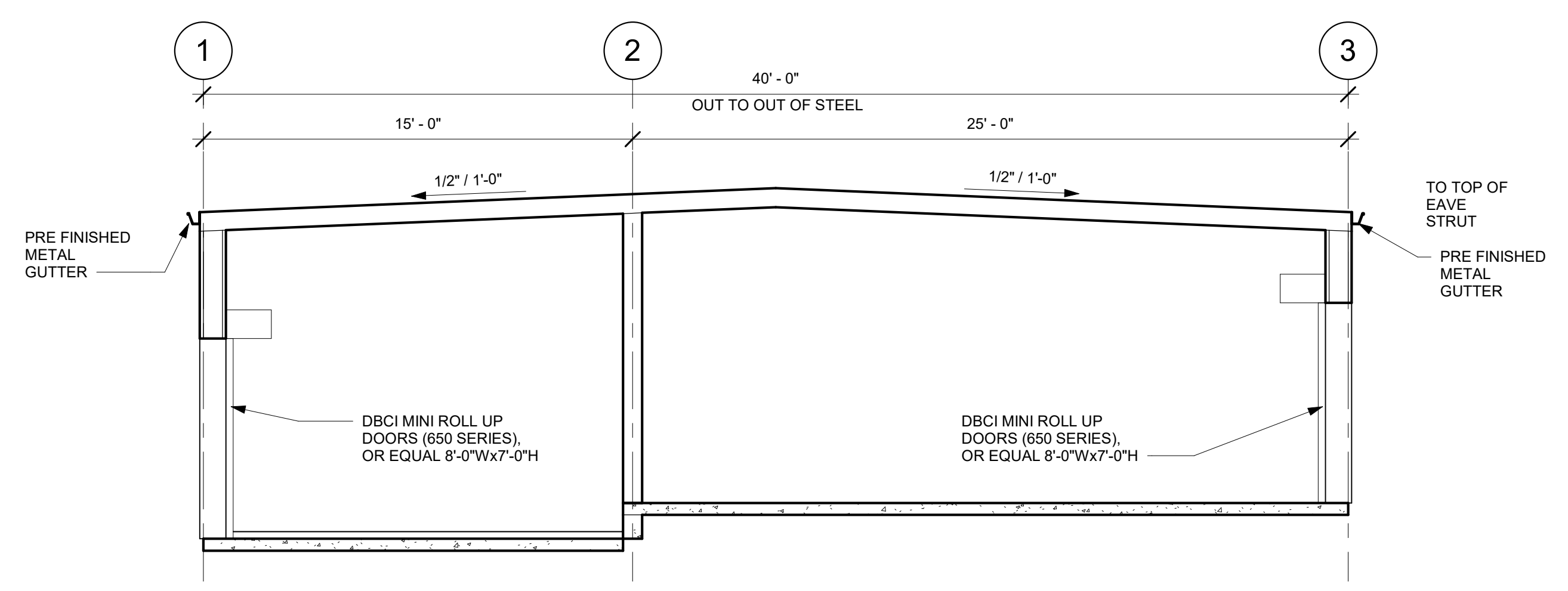
Meridian Self Storage Facility -
 TYPICAL INTERIOR BUILDING
 DEVELOPMENT PLAN

Project Number
23.071
 Date
 9.7.2023
 Revisions

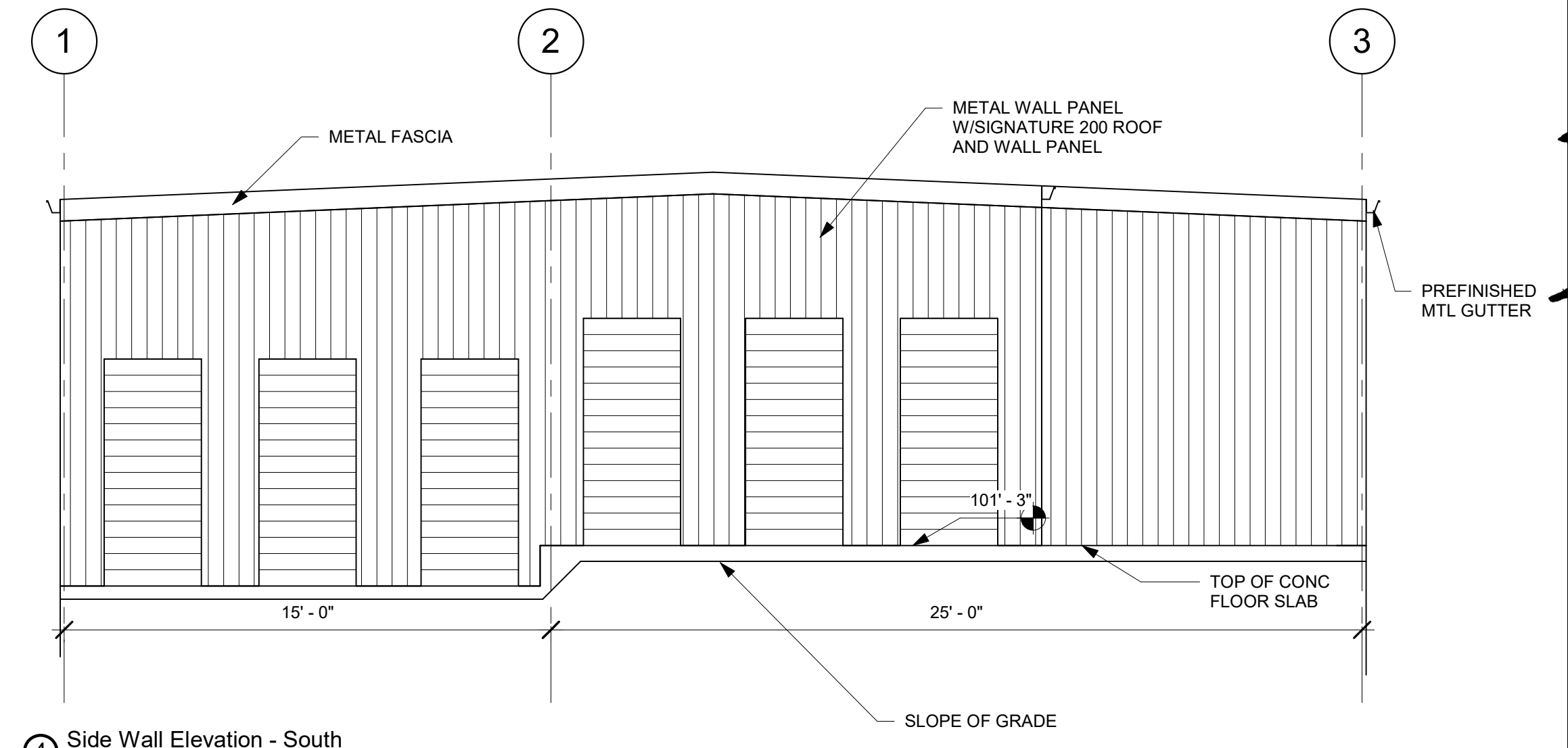
Drawn By
 ATT
 Checked By
 YOW

A5.1
 Building Elevations & Sections
 Scale
 As Indicated

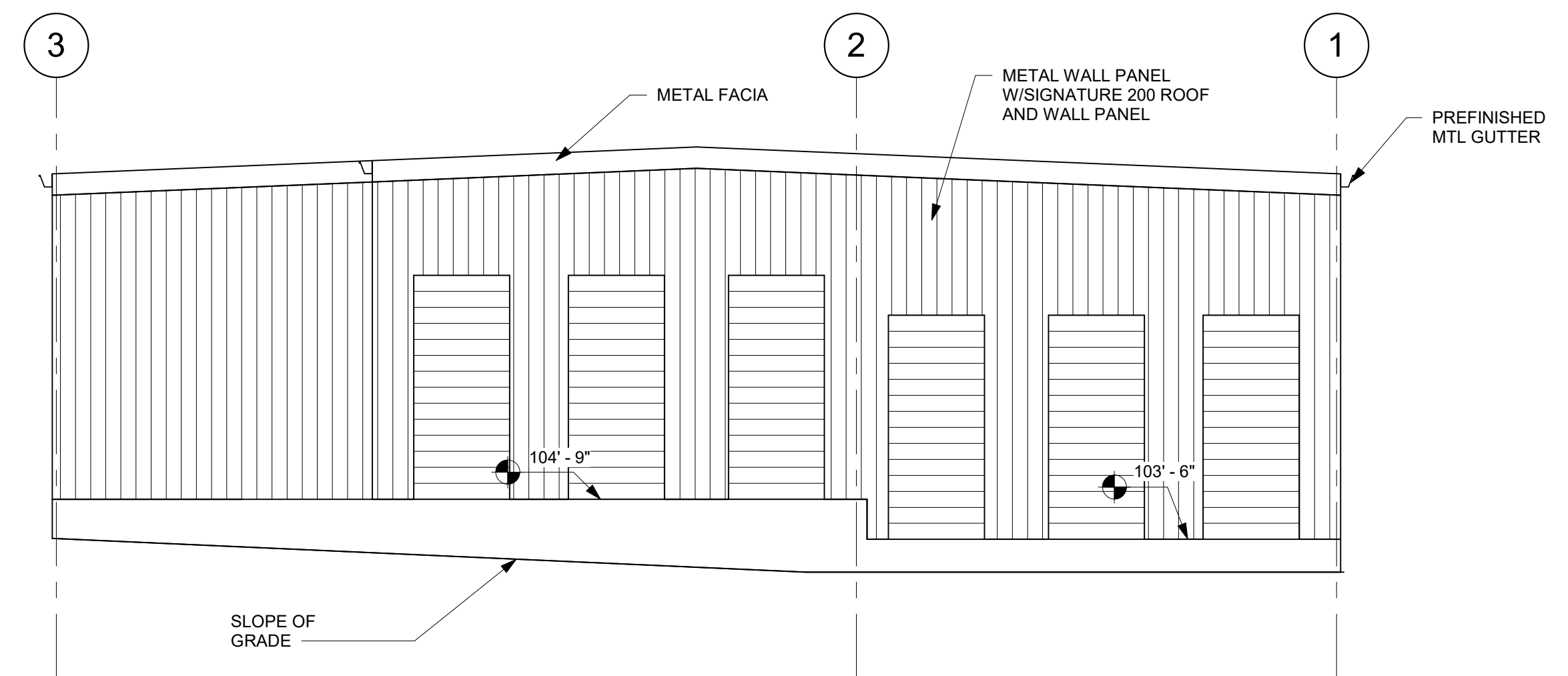
| MATERIAL COLOR PALETTE | |
|--|--|
| - METAL WALL PANEL - TAN/BEIGE COLOR RANGE | |
| - METAL ROOF PANEL - DARK TAN/BEIGE COLOR RANGE | |
| - METAL TRIM - DARK TAN COLOR RANGE | |
| - GARAGE DOORS - RED | |
| - ROOF AND WALL PANELS - SIGNATURE 200 METAL PANEL BY P.E.M.B. | |
| TYPICAL INTERIOR BUILDINGS - BUILDINGS C, D, G, H AND J | |



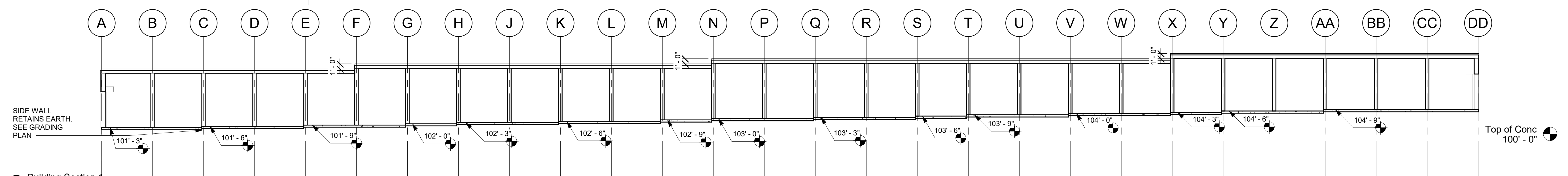
Section 1
 1/4" = 1'-0"



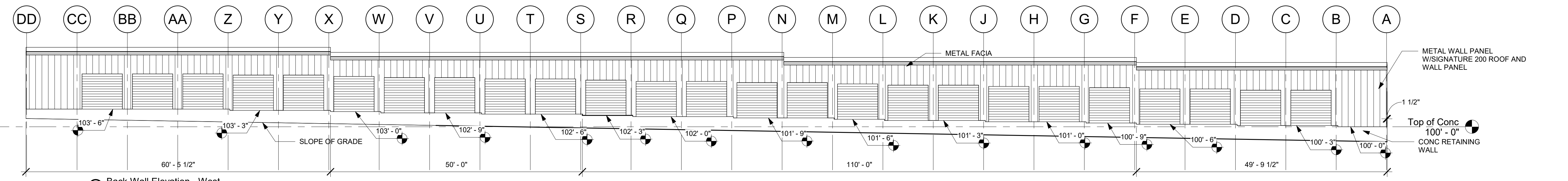
Side Wall Elevation - South
 1/4" = 1'-0"



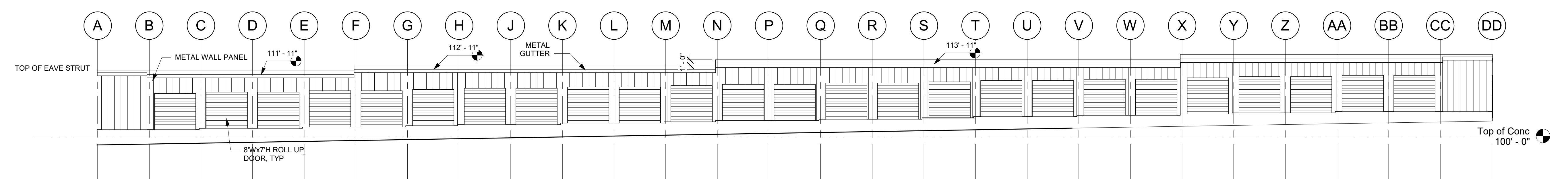
Side Wall Elevation - North
 1/4" = 1'-0"



Building Section 1
 3/32" = 1'-0"



Back Wall Elevation - West
 3/32" = 1'-0"



Front Wall Elevation - East
 3/32" = 1'-0"

9/7/2023 3:13:33 PM

