

EL PASO COUNTY

COLORADO

*Copied 8/25/21
mailed 8/26/21
KH*

COMMISSIONERS:
STAN VANDERWERF (CHAIR)
LONGINOS GONZALEZ, JR. (VICE-CHAIR)

HOLLY WILLIAMS
CARRIE GEITNER
CAMI BREMER

PLANNING AND COMMUNITY DEVELOPMENT DEPARTMENT
CRAIG DOSSEY, EXECUTIVE DIRECTOR

8/24/2021

RE: Walters OS Re-Plat – Final Plat

File: SF-20-031

Parcel ID Nos.: 7123102049, 7124103028, 7124201001, 7124201003, 7124202236
7124204023, 7124204029

To Whom It May Concern:

This letter is to inform property owners adjacent to the property located at parcel numbers 7123102049, 7124103028, 7124201001, 7124201003, 7124202236, 7124204023, 7124204029 that the applicant, WOSC, has requested approval of an application for a Final Plat to combine five existing tracts for open space within an existing subdivision.

The Planning and Community Development Director may make a formal decision regarding the Final Plat application on 9/7/2021. Any comments or questions may be forwarded to me prior to that decision. Administrative approval by the Planning and Community Development Director is subject to the appeal provisions of the Land Development Code.

You may view the application documents online at www.epcdevplanreview.com. Please feel free to contact me with any questions, comments, or concerns you may have prior to the decision.

Respectfully,

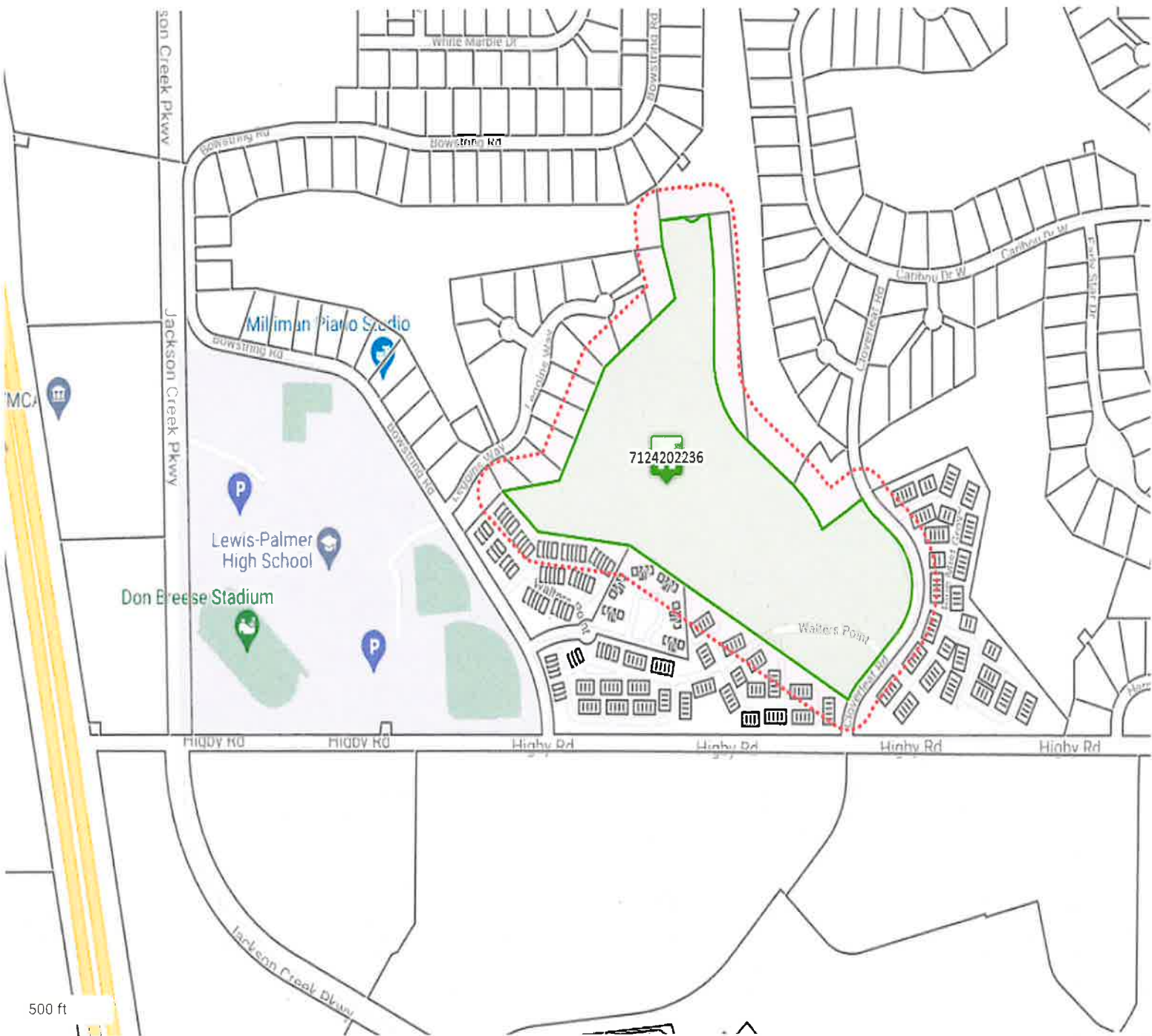
John Green
El Paso County Planning and Community Development
719-520-6442
johnngreen@elpasoco.com

2880 INTERNATIONAL CIRCLE, SUITE 110
PHONE: (719) 520-6300



COLORADO SPRINGS, CO 80910-3127
FAX: (719) 520-6695

WWW.ELPASOCO.COM



LOVERLEAF RD

No Photo Available



7124202236
PT CLOVERLEAF LLC

Market Value \$28,500

Disclaimer

We have made a good-faith effort to provide you with the most recent and most accurate information available. However, if you need to use this information in any legal or official venue, you will need to obtain official copies from the Assessor's Office. Do be aware that this data is subject to change on a daily basis. If you believe that any of this information is incorrect, please call us at (719) 520-6600.

WOSC LLC
902 CARIBOU DR W
MONUMENT CO 80132

BRG 2013 LLC
9741 ABINGTON CT
FAIRFAX VA 22032

HARVEY ROBERT C
17325 LEGGINS WAY
MONUMENT CO 80132-8586

CAMPBELL STACY
17285 LEGGINS WAY
MONUMENT CO 80132-8586

BEDOYA ANDREI
17265 LEGGINS WAY
MONUMENT CO 80132-8586

HOLLINGSWORTH BRIAN K
17245 LEGGINS WAY
MONUMENT CO 80132-8586

COLEMAN BRAD A
17235 LEGGINS WAY
MONUMENT CO 80132-8586

PT CLOVERLEAF LLC
1846 WOODMOOR DR STE 100
MONUMENT CO 80132

TAYLOR CAMERON W
17205 LEGGINS WAY
MONUMENT CO 80132-8586

NASH PETER B
17380 LEGGINS WAY
MONUMENT CO 80132-8586

SINK KEVIN H JR
17375 LEGGINS WAY
MONUMENT CO 80132-8586

KIRBY STEVEN C
1120 MAGIC LAMP WAY APT A
MONUMENT CO 80132-8584

BAUTH VICKIE
1120 MAGIC LAMP WAY UNIT 2
MONUMENT CO 80132-8584

COUNTRY RIDGE ESTATES RENTALS
LLC
100 FILLMORE ST 5TH FLOOR
DENVER CO 80206-4916

HARNES WENDY S
1120 MAGIC LAMP WAY UNIT 6
MONUMENT CO 80132-8584

FREETON HOLDING LLC
834-F S PERRY ST #336
CASTLE ROCK CO 80104

REED DAVID B
1120 MAGIC LAMP WAY UNIT 4
MONUMENT CO 80132-8584

HAU LIHN NGOC
790 WINDING HILLS RD
MONUMENT CO 80132-9440

ZAHL BRENDAN
17310 COLONIAL PARK
MONUMENT CO 80132-8491

COUNTRY RIDGE ESTATES RENTALS
LLC
100 FILLMORE ST 5TH FLOOR
DENVER CO 80206-4916

MORRELL MARY
1050 MAGIC LAMP WAY UNIT E
MONUMENT CO 80132

VON SEGGERN YOMBA A
834-F S PERRY ST PMB 336
CASTLE ROCK CO 80104

FOLEY JOHN WILLIAM
2060 SILKWOOD DR
COLORADO SPRINGS CO 80920

MAESTAS LINDA B
1050 MAGIC LAMP WAY UNIT D
MONUMENT CO 80132-8546

1030 MAGIC LAMP WAY UNIT B LLC
820 S MONACO PKWY #183
DENVER CO 80224-3703

IOZZI DOLORES E
1030 MAGIC LAMP WAY UNIT 5C
MONUMENT CO 80132-8585

NELSON SPENCER T
1030 MAGIC LAMP WAY UNIT 5D
MONUMENT CO 80132-8585

ENOCHS BRETT EDWARD
13737 W AMHERST WAY
DENVER CO 80228-4965

COUNTRY RIDGE ESTATES RENTALS
LLC
100 FILLMORE ST 5TH FLOOR
DENVER CO 80206-4916

ELLIS MERRILEE
1352 WALTERS PT
MONUMENT CO 80132-8633

NOLT ALAINE K
1346 WALTERS PT
MONUMENT CO 80132-8633

WHITSON KATHRYN L
1340 WALTERS PT
MONUMENT CO 80132-8633

ROUNTREE THOMAS
1334 WALTERS PT
MONUMENT CO 80132-8633

LEGACY INVESTMENTS LLC
405 SAINT MORITZ WAY
MONUMENT CO 80132-8045

LANG ARIANNA L
1322 WALTERS PT
MONUMENT CO 80132-8633

THEKEN NANCY
9439 BANDLEY DR
FOUNTAIN CO 80817-2609

GIDEON LANCE
1310 WALTERS PT
MONUMENT CO 80132-8633

NEDBALSKI ASHLEY E
1304 WALTERS PT
MONUMENT CO 80132-8633

WAY DANIEL C
1296 TIMBER RUN HEIGHTS
MONUMENT CO 80132-8634

NAJDZION MATTHEW D
1290 TIMBER RUN HTS
MONUMENT CO 80132-8634

1284 TIMBER RUN HEIGHTS
545 3RD ST # 2302
MONUMENT CO 80132-4594

DUFFY PAMELA S
1278 TIMBER RUN HTS
MONUMENT CO 80132-8634

SOWLES REVOCABLE LIVING TRUST
42335 WASHINGTON ST STE F
PALM DESERT CA 92211-8031

DENNERT DRAKE W
629 FOREST VIEW WAY
MONUMENT CO 80132-8267

BOTVINIK REBECCA M
1350 BOWSTRING RD
MONUMENT CO 80132

AUNG LU MIN
1254 TIMBER RUN HTS
MONUMENT CO 80132-8634

PATTI CHARLES A
1248 TIMBER RUN HTS
MONUMENT CO 80132-8634

ALLEN WILLIAM R
1242 TIMBER RUN HTS
MONUMENT CO 80132-8634

FLINK ARI J
6558 JEREMIE CT
SAN JOSE CA 95120-5530

RAYNER JAMES R
5930 THURBER DR
COLORADO SPRINGS CO 80924-2046

KENEFICK JOHN J
1224 TIMBER RUN HTS
MONUMENT CO 80132-8634

TALBOTT MARTHA A
1218 TIMBER RUN HTS
MONUMENT CO 80132-8634

DITTMER STEVAN W
1017 BURNING BUSH PT
MONUMENT CO 80132-8653

JONES TIMOTHY D
1021 BURNING BUSH PT
MONUMENT CO 80132-8653

STEFFEL AMY MICHELLE
1025 BURNING BUSH PT
MONUMENT CO 80132-8653

GUERRERO ROSALIE M
1029 BURNING BUSH PT
MONUMENT CO 80132-8653

PLEASANT PROPERTIES LLC
3303 SW 77TH ST
LINCOLN NE 68532

MORENO DOLORES KYLE
1058 WALTERS PT
MONUMENT CO 80132-8646

HESS AMANDA K
1052 WALTERS PT
MONUMENT CO 80132-8646

BECK RACHEL
1046 WALTERS PT
MONUMENT CO 80132-8646

STUMPF JEFFREY M
1040 WALTERS PT
MONUMENT CO 80132-8646

SIDNEY MANAGEMENT LLC
1286 KENASHA DR
LARKSPUR CO 80118-8760

HERNANDO & JEANNETTE
HERNANDEZ
1053 WALTERS PT
MONUMENT CO 80132-8646

CARLSEN JAMES RICHARD
1047 WALTERS PT
MONUMENT CO 80132-8646

PERKIN VALERIE L
1041 WALTERS PT
MONUMENT CO 80132-8646

2002 MUNCEY FAMILY TRUST
1918 DIAMOND CREEK
COLORADO SPRINGS CO 80921-2982

SMITH MARIETTA S
17022 CROSS TIMBERS GRV
MONUMENT CO 80132-8654

LINDSTROM IMA R
17018 CROSS TIMBERS GRV
MONUMENT CO 80132-8654

WHELAN RICHARD W
4954 MUSHROOM ROCK CT
COLORADO SPRINGS CO 80924

FAMIGLIETTI DAVID G
17010 CROSS TIMBERS GRV
MONUMENT CO 80132-8654

CASTLEBERRY LACEY
940 BURNING BUSH PT
MONUMENT CO 80132

JONES KATHRYN ANN TRUST
8653 W MELINDA LN
PEORIA AZ 85382-2498

BREESE DEWAYNE D
932 BURNING BUSH PT
MONUMENT CO 80132

FRIEDERICKS DIANE JOY
928 BURNING BUSH PT
MONUMENT CO 80132

BURNING BUSH POINT LLC
15025 BRONCO DR
COLORADO SPRINGS CO 80921

CALLAN JAMES
905 BURNING BUSH PT
MONUMENT CO 80132-8652

MAHDER MITCHELL
909 BURNING BUSH PT
MONUMENT CO 80132-8652

BLOOM JAMES C
1813 EDWARD WAY
PITTSBURGH PA 15203-1806

KING JOSEPH E
917 BURNING BUSH PT
MONUMENT CO 80132-8652

GUZMAN REBEKAH J
921 BURNING BUSH PT
MONUMENT CO 80132-8652

WOODMOOR PARK HOMEOWNERS
1975 RESEARCH PKWY STE 320
COLORADO SPRINGS CO 80920-1055

WOODMOOR PARK HOMEOWNERS
4325 N NEVADA AVE #100
COLORADO SPRINGS CO 80907-4318

PT CLOVERLEAF LLC
1846 WOODMOOR DR STE 100
MONUMENT CO 80132

PT CLOVERLEAF LLC
1836 WOODMOOR DR STE 100
MONUMENT CO 80132

WOSC LLC
902 CARIBOU DR W
MONUMENT CO 80132

PT CLOVERLEAF LLC
1836 WOODMOOR DR STE 100
MONUMENT CO 80132

WOSC LLC
902 CARIBOU DR W
MONUMENT CO 80132

LAANSMA JAN E
17167 BLUE MIST GRV
MONUMENT CO 80132-8640

GIBSON TODD J
3780 HIGHVIEW DR
COLORADO SPRINGS CO 80908-1307

LITTRELL GLENN L SR
17004 BLUE MIST GRV
MONUMENT CO 80132-8639

CHAU WAIFU
17008 BLUE MIST GRV
MONUMENT CO 80132-8639

CARLSON NANCY
17012 BLUE MIST GRV
MONUMENT CO 80132-8639

TATE GREGORY TRUST
1497 WISHING WELL VW
MONUMENT CO 80132-8957

DEMARCO ANTHONY ALLAN
17020 BLUE MIST GRV
MONUMENT CO 80132-8639

COWLISHAW RONNETTE L
17024 BLUE MIST GRV
MONUMENT CO 80132

KLEIST ROBERT C JR
17028 BLUE MIST GRV
MONUMENT CO 80132-8639

NOULEKOUN SENA B
17032 BLUE MIST GRV
MONUMENT CO 80132-8639

BOWEN TIA J LIVING TRUST
17036 BLUE MIST GRV
MONUMENT CO 80132-8639

MCDANIEL JAMES E
17040 BLUE MIST GRV
MONUMENT CO 80132-8639

DENGLER KARL A
17044 BLUE MIST GRV
MONUMENT CO 80132-8639

SITTNER JAMES A
PO BOX 1008
MONUMENT CO 80132

SHERRY CHARLES L
17052 BLUE MIST GRV
MONUMENT CO 80132-8639

LARSEN MARGARET
17056 BLUE MIST GRV
MONUMENT CO 80132-8639

WIEROK PROPERTIES LLC
16930 OLD BOROUGH
MONUMENT CO 80132-8390

MEIFERT FAMILY TRUST
13524 E CEDARPINE LN
MOORPARK CA 93021-2861

JONES DAVID
17068 BLUE MIST GRV
MONUMENT CO 80132-8639

AMIDEI IVALENE
17072 BLUE MIST GRV
MONUMENT CO 80132-8639

JAYNAN LLC
3980 FOXCHASE WAY
COLORADO SPRINGS CO 80908-7118

DE BORD TIMOTHY L
5420 MOUNT DR
SCHERERVILLE IN 46375-3376

COX DARREN
15714 BLUE PEARL CT
MONUMENT CO 80132

JENSEN NICHOLAS FRASER
17164 BLUE MIST GRV
MONUMENT CO 80132-8640

BOPP RICHARD N JR
1140 GENERALS HWY
CROWNSVILLE MD 21032

WOODMOOR PARK HOMEWONERS
ASSN INC
10 N MEADE AVE
COLORADO SPRINGS CO 80909-5654