

MEMORANDUM

To: El Paso County

From: Sean Hays, PE
Kimley-Horn and Associates, Inc.

Date: September 9, 2022

Subject: Design Documentation - Proposed Roundabout at Constitution Ave and Akers Dr

A new roundabout is proposed at the intersection of Akers Dr and Access Rd in El Paso County, Colorado. This memo summarizes the design criteria and critical design parameters for the proposed roundabout.

The design of this roundabout is based upon the criteria established in the Wisconsin Department of Transportation Facilities Development Manual, Chapter 11 Section 26 (Wisconsin DOT FDM 11-26).

Lane Configuration and Geometrics

The Citizen on Constitution Traffic Study Letter (dated 4-8-2022) prepared by Kimley-Horn recommends a roundabout with a single circulatory lane and one lane entering on each approach at the project intersection. The report shows that the roundabout will operate at a Level of Service (LOS) of A in design year 2045. Refer to the traffic impact study for additional details.

To meet the criteria in the Wisconsin DOT FDM 11-26, the proposed roundabout was designed with the geometry displayed in Table 1. A graphical representation of the roundabout with supporting dimensions, is included as Exhibit 2 at the end of this memo.

TABLE 1 ROUNDABOUT GEOMETRICS

Inscribed Circle Diameter (ICD)	120 feet
Minimum Lane Width (on approach)	16 feet
Entry Width	19 feet
Circulatory Roadway Width	20 feet
Truck Apron Width	15.5 feet
SB Entry Angle, PHI	16.2 deg
WB Entry Angle, PHI	24.7 deg
NB Entry Angle, PHI	17.3 deg

Fastest Path Speeds

Fastest path performance is an evaluation of the geometric elements that control driver negotiation speeds. Two primary elements were evaluated to determine the fastest path speed:

- Estimated vehicle speeds at critical path radii on the fastest path
- Speed consistency between the critical path radii

Fastest paths were reviewed in CADD with spline curves based on a technique described in the Wisconsin DOT FDM 11-26 Attachment 50.2.

Estimated vehicle speeds for entry, circulating, exit, left turn and right turn paths were calculated using standard estimation of +2%/-2% cross slope / superelevations for vehicles traveling on the estimated fastest path.

Graphical representations of the estimated fastest paths and the locations of the critical path radius used to calculate R1 thru R5 speeds, are included as Exhibits 16-18 at the end of this memo.

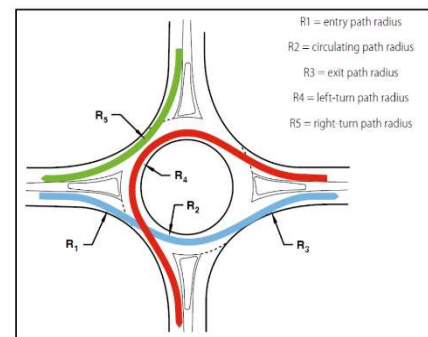
Table 2 below summarizes the results of the fastest path evaluation. Table 3 and Figure 1 provide additional information on the design criteria used for the calculation of the fastest paths.

TABLE 2 – FASTEST PATH RESULTS

	LEG 1 SB		LEG 2 WB		LEG 3 NB	
R_1 , Radius/Speed, FT/MPH	135	23	NA	NA	108	22
R_2 , Radius/Speed, FT/MPH	150	24	NA	NA	105	21
R_4 , Radius/Speed, FT/MPH	42	14	43	14	NA	NA
R_5 , Radius/Speed, FT/MPH	NA	NA	83	20	68	18

TABLE 3 FASTEST PATH PERFORMANCE CRITERIA

Path offset from curb face	5 feet
Path offset from centerline	5 feet
Path offset from painted edge of travel way	3 feet
Single lane entry (maximum)	25 mph
Speed consistency	10-15 mph



Design Vehicle

Design vehicle paths were evaluated for likely design vehicles and their associated path required to navigate the roundabout. Vehicle profile, path and tire tracking offsets are shown in Exhibits 5-18 included at the end of this memo. The following design vehicles and design criteria were used to evaluate the tire tracking offsets:

Vehicle	Category	Notes
WB-50	Design – North/South Accommodate - West	Full Access
SU-40	Design	Full Access
WB-67	Accommodate – North/South	North and South Legs
Snow Plow	Design	Navigate with Plow Down

Category and case shown above refer to criteria established in the Wisconsin DOT FDM 11-26. Information is provided below on the criteria. For additional details refer to the Wisconsin DOT FDM 11-26.

- Category – Accommodate: is used for low percentage of design vehicles of this type. Preferable in low speed, urban environments where pedestrian and bike traffic is prevalent. The vehicle will be able to navigate the roundabout but may do so at reduced speeds and/or encroach on the gutter. Tire tracking offsets should not encroach on non-mountable curb.
- Category – Design: is used for higher percentages of design vehicles of this type. The vehicle will be able to navigate the roundabout without encroaching on the gutter. Tire tracking offset should not encroach on gutter pan, or non-mountable curb.

The southbound U-Turn maneuver was evaluated for all design vehicles in the event that a driver mistakenly turns from Constitution Ave onto Akers Dr. All design vehicle are able to make this maneuver within the limits of the proposed roundabout with use of the truck apron, and at reduced speeds.

Sight Distance

Sight line determination is an evaluation of the driver's sight line to navigate the roundabout. Per Wisconsin DOT FDM 11-26 guidance the distance for approach and conflicting vehicles are calculated using fast path and posted design speed. Table 5 below summarizes the minimum sight parameters as defined by AASHTO and NCHRP 672. Sight lines are broken into the following components:

Stopping Sight Distance (SSD)

SSD is evaluated for approach speeds to the pedestrian crosswalk and critical path speeds for circulating vehicles. SSD distances are based on the current American Association of State Highway and Transportation Officials (AASHTO) Green Book recommendations. See Exhibits 25 and 26 for approximate location of sight lines for SSD, for the circulatory roadway and pedestrian crosswalk.

Intersection Sight Distance (ISD)

ISD is evaluated for the critical path speeds to a vehicle stopped behind the pedestrian crosswalks for each approach. ISD distances are based on the recommendations in NCHRP 672, which includes evaluating the sight distance for vehicles entering and circulating within the roundabout. Entering sight distance (d1) is provided for the southbound and westbound legs as these legs have adjacent entries.

The northbound leg does not have an adjacent entry and was not evaluated for entering sight distance. Circulating sight distance (d2) is provided for all legs of the roundabout. See Exhibits 22-24 for approximate location of sight lines for ISD.

Circulating Sight Distance

Circulating sight distance was evaluated for vehicles circulating through the roundabout to evaluate drivers ability to see other vehicles circulating roundabout. See Exhibit 27 for approximate location of sight lines for circulating vehicles.

Composite Sight Distance

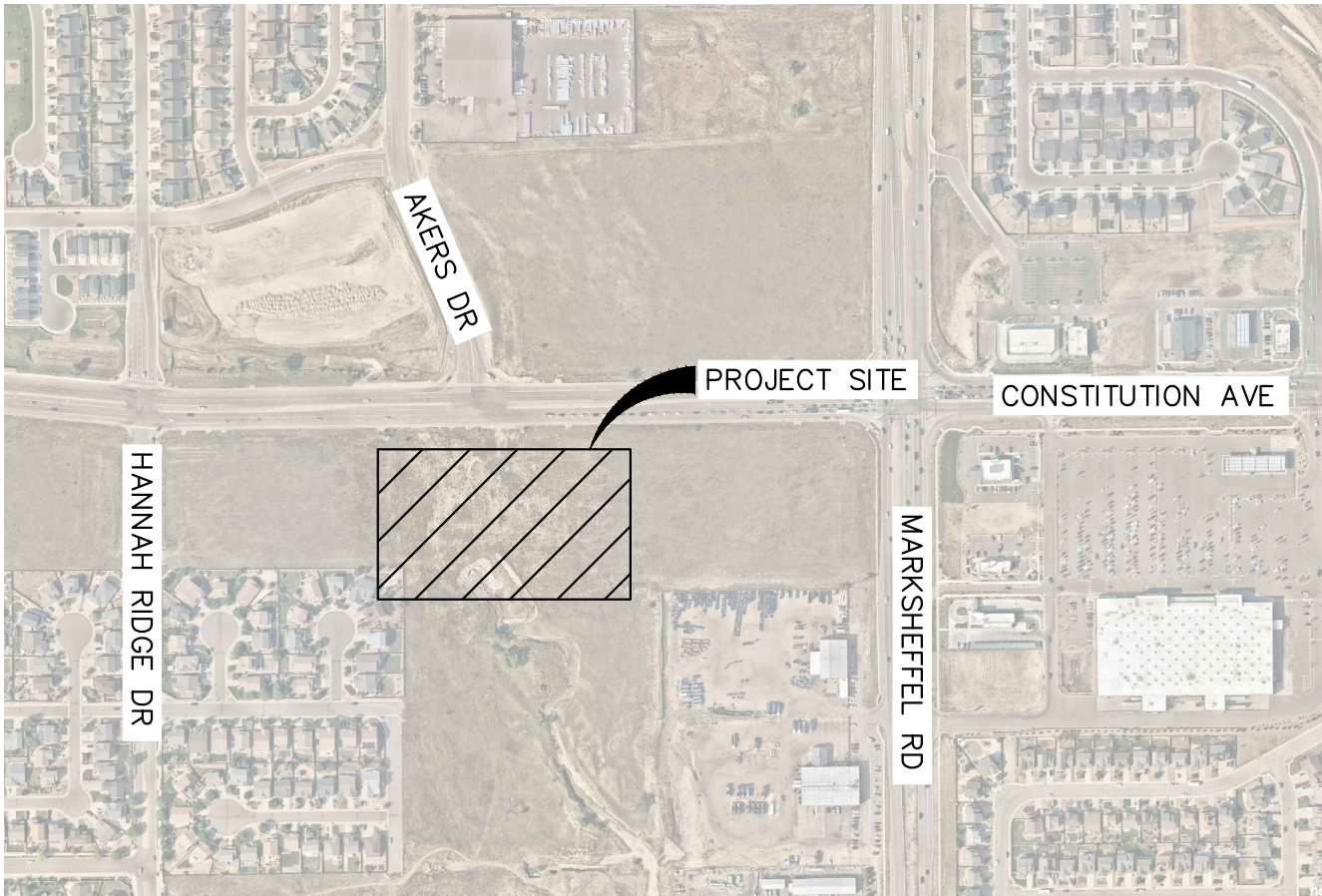
Exhibit 28 illustrates the composite of sight lines calculated for SSD, ISD, and circulating sight distance. Areas indicated as low growth landscaping should be free from vertical obstructions greater than 30" that may hinder the ability for a driver to recognize an obstruction and stop. Considerations should be given to limit the driver sight lines in areas outside those identified as low growth.

TABLE 5 – MINIMUM SIGHT PARAMETERS	LEG 1		LEG 2		LEG 3	
	SB		WB		NB	
Intersection Sight Distance (MPH/FT) (d1, Entering)	25	185	25	185	--	--
Intersection Sight Distance (MPH/FT) (d2, Circulating)	14	105	14	105	14	105
Stopping Sight Distance – Ped Crossing (MPH/FT)	40	305	25	155	40	305
Circulating Sight Distance – Circulating Roadway (MPH/FT)	14	115	14	115	14	115

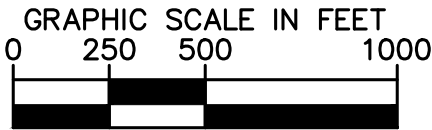
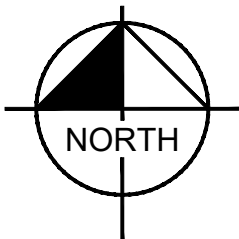
AKERS DR & ACCESS RD ROUNDABOUT

EL PASO COUNTY, COLORADO

September 9, 2022

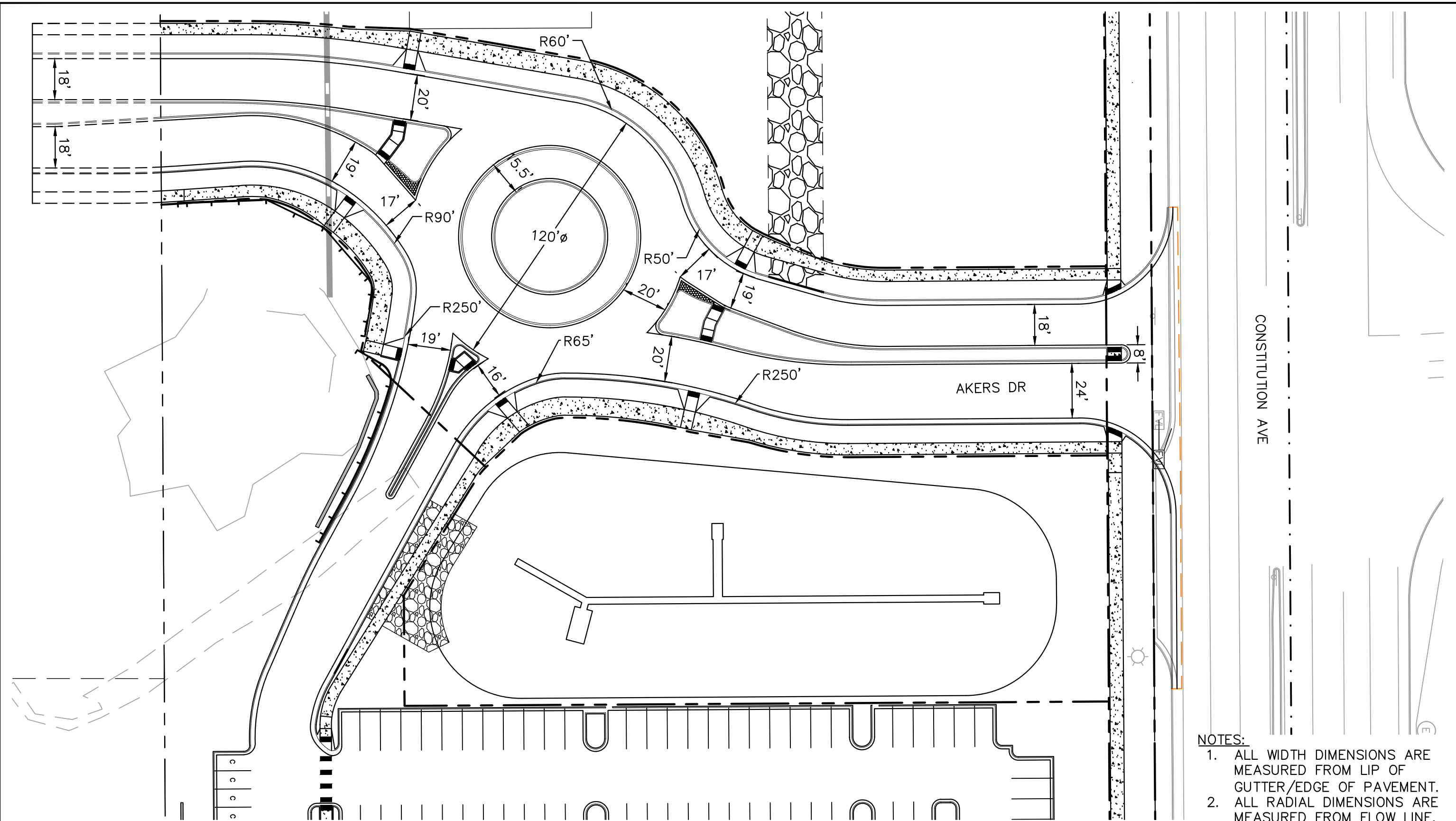


LOCATION MAP



INDEX

1	<u>TITLE SHEET</u>
2	<u>ROUNDABOUT LAYOUT</u>
3	<u>TYPICAL SECTIONS</u>
4	<u>TYPICAL SECTIONS</u>
5	<u>VEHICLE PATH - DESIGN VEHICLE SU-40</u>
6	<u>VEHICLE PATH - DESIGN VEHICLE SU-40</u>
7	<u>VEHICLE PATH - DESIGN VEHICLE SU-40</u>
8	<u>VEHICLE PATH - DESIGN VEHICLE SU-40</u>
9	<u>VEHICLE PATH - DESIGN VEHICLE WB-50</u>
10	<u>VEHICLE PATH - DESIGN VEHICLE WB-50</u>
11	<u>VEHICLE PATH - DESIGN VEHICLE WB-50</u>
12	<u>VEHICLE PATH - DESIGN VEHICLE WB-50</u>
13	<u>VEHICLE PATH - DESIGN VEHICLE WB-67</u>
14	<u>VEHICLE PATH - DESIGN VEHICLE WB-67</u>
15	<u>VEHICLE PATH - DESIGN VEHICLE SNOWPLOW</u>
16	<u>VEHICLE PATH - DESIGN VEHICLE SNOWPLOW</u>
17	<u>VEHICLE PATH - DESIGN VEHICLE SNOWPLOW</u>
18	<u>VEHICLE PATH - DESIGN VEHICLE SNOWPLOW</u>
19	<u>LEG 1 - SB FASTEST PATH</u>
20	<u>LEG 2 - WB FASTEST PATH</u>
21	<u>LEG 3 - NB FASTEST PATH</u>
22	<u>SB INTERSECTION SIGHT DISTANCE</u>
23	<u>WB INTERSECTION SIGHT DISTANCE</u>
24	<u>NB INTERSECTION SIGHT DISTANCE</u>
25	<u>STOPPING SIGHT DISTANCE</u>
26	<u>STOPPING SIGHT DISTANCE</u>
27	<u>CIRCULATING SIGHT DISTANCE</u>
28	<u>COMPOSITE SIGHT DISTANCE</u>



- NOTES:
1. ALL WIDTH DIMENSIONS ARE MEASURED FROM LIP OF GUTTER/EDGE OF PAVEMENT.
 2. ALL RADIAL DIMENSIONS ARE MEASURED FROM FLOW LINE.

Kimley»Horn

© 2020 KIMLEY-HORN AND ASSOCIATES, INC.
4582 SOUTH ULSTER STREET, SUITE 1500, DENVER, CO 80237
PHONE: 303-228-2300

AKERS DR & ACCESS RD ROUNDABOUT

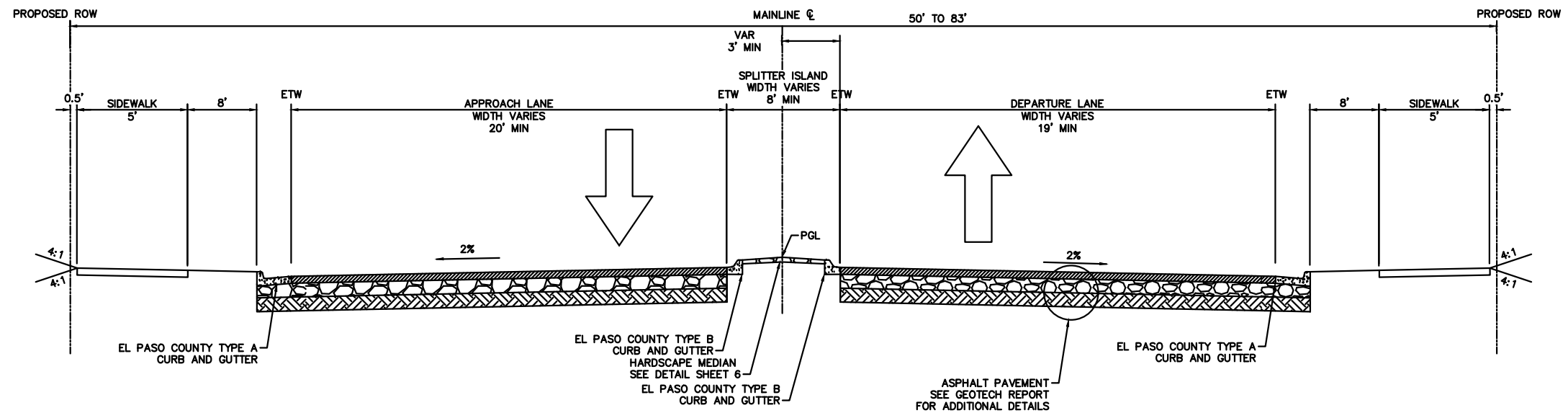
ROUNDABOUT OVERVIEW

GRAPHIC SCALE IN FEET
0 10 20 40

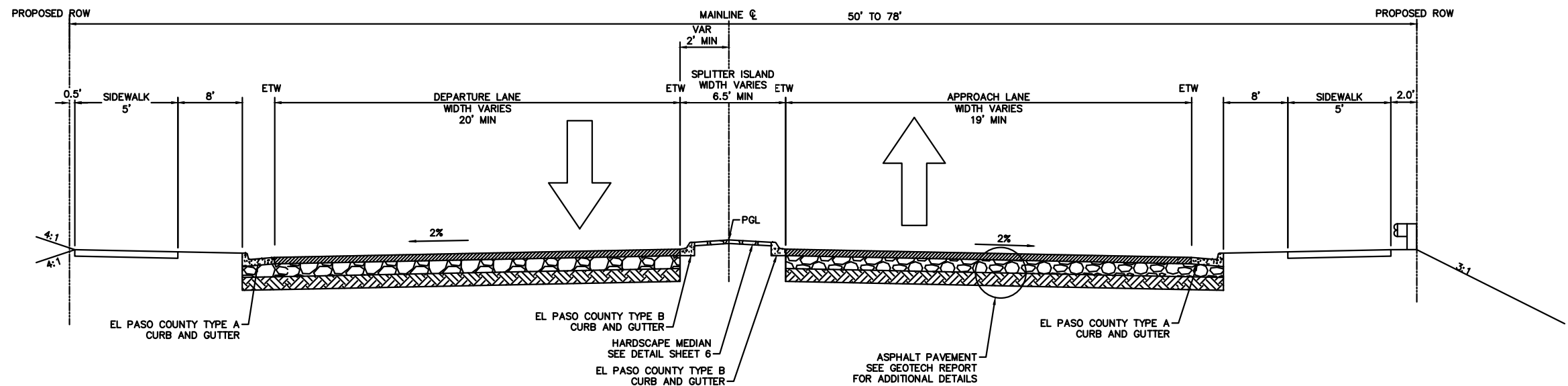


EXHIBIT:

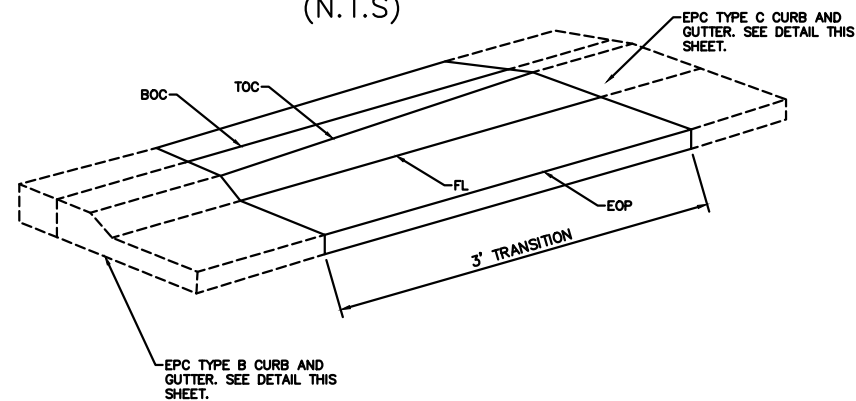
2

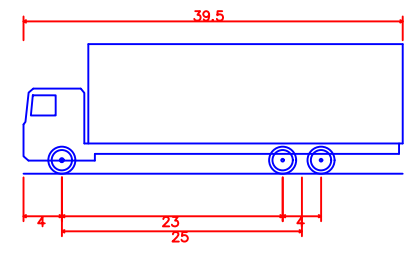
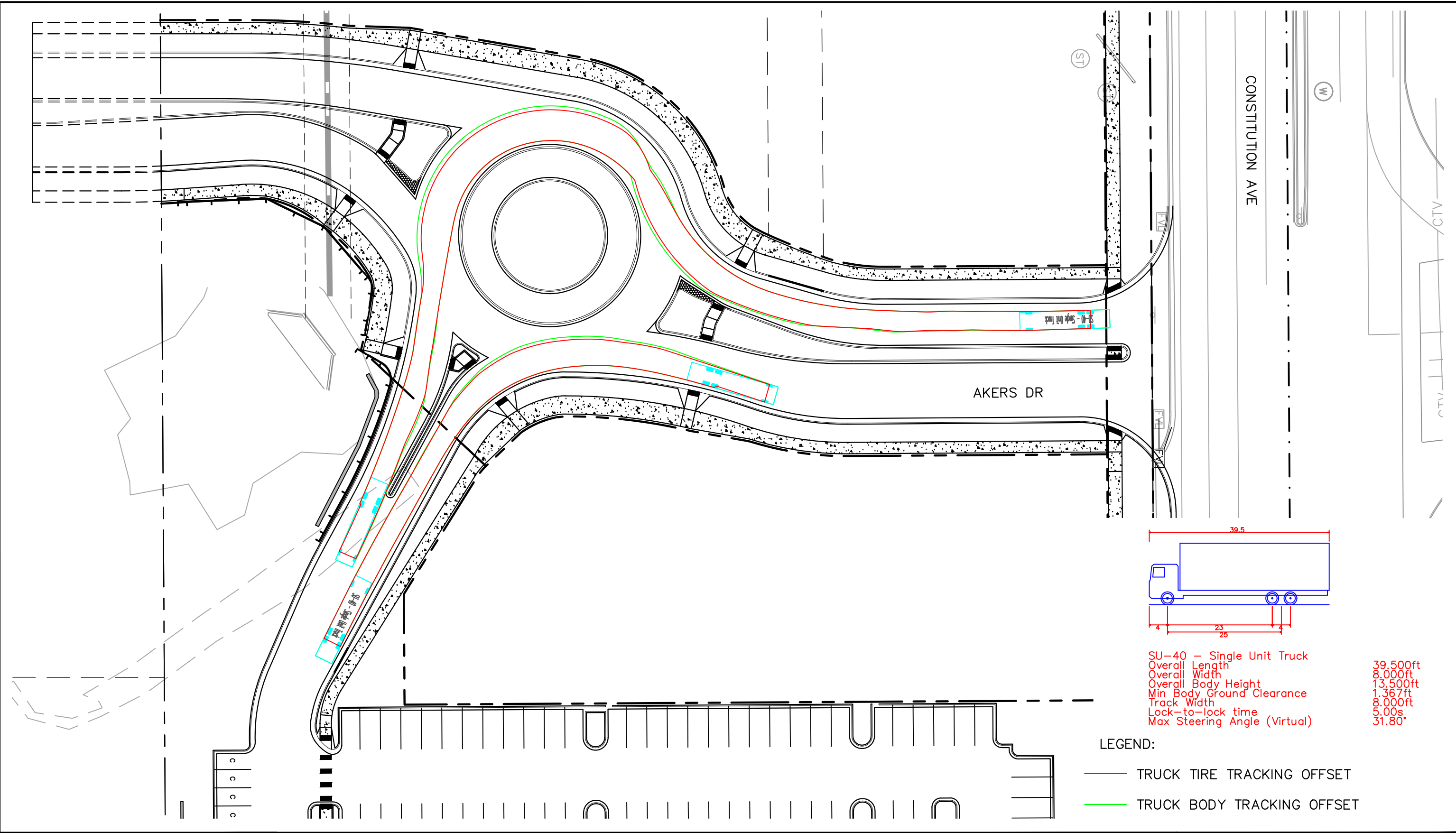


NORTH LEG TYPICAL SECTION APPROACH



SOUTH LEG TYPICAL SECTION APPROACH

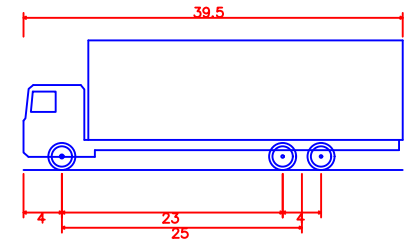
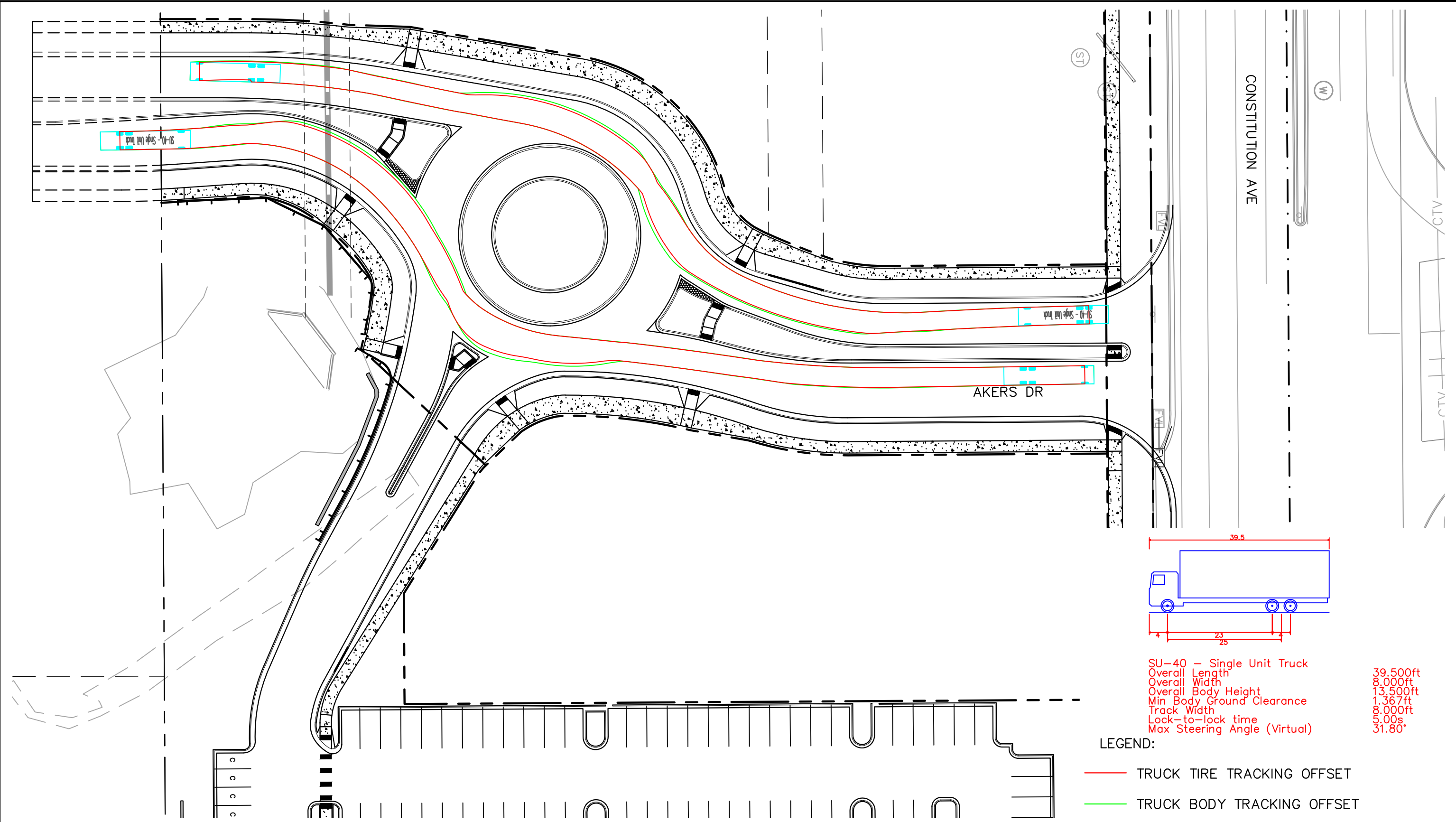




SU-40 - Single Unit Truck
 Overall Length 39.500ft
 Overall Width 8.000ft
 Overall Body Height 13.500ft
 Min Body Ground Clearance 1.367ft
 Track Width 8.000ft
 Lock-to-lock time 5.00s
 Max Steering Angle (Virtual) 31.80°

LEGEND:

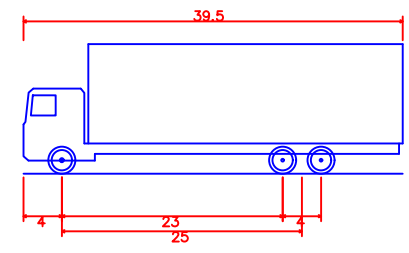
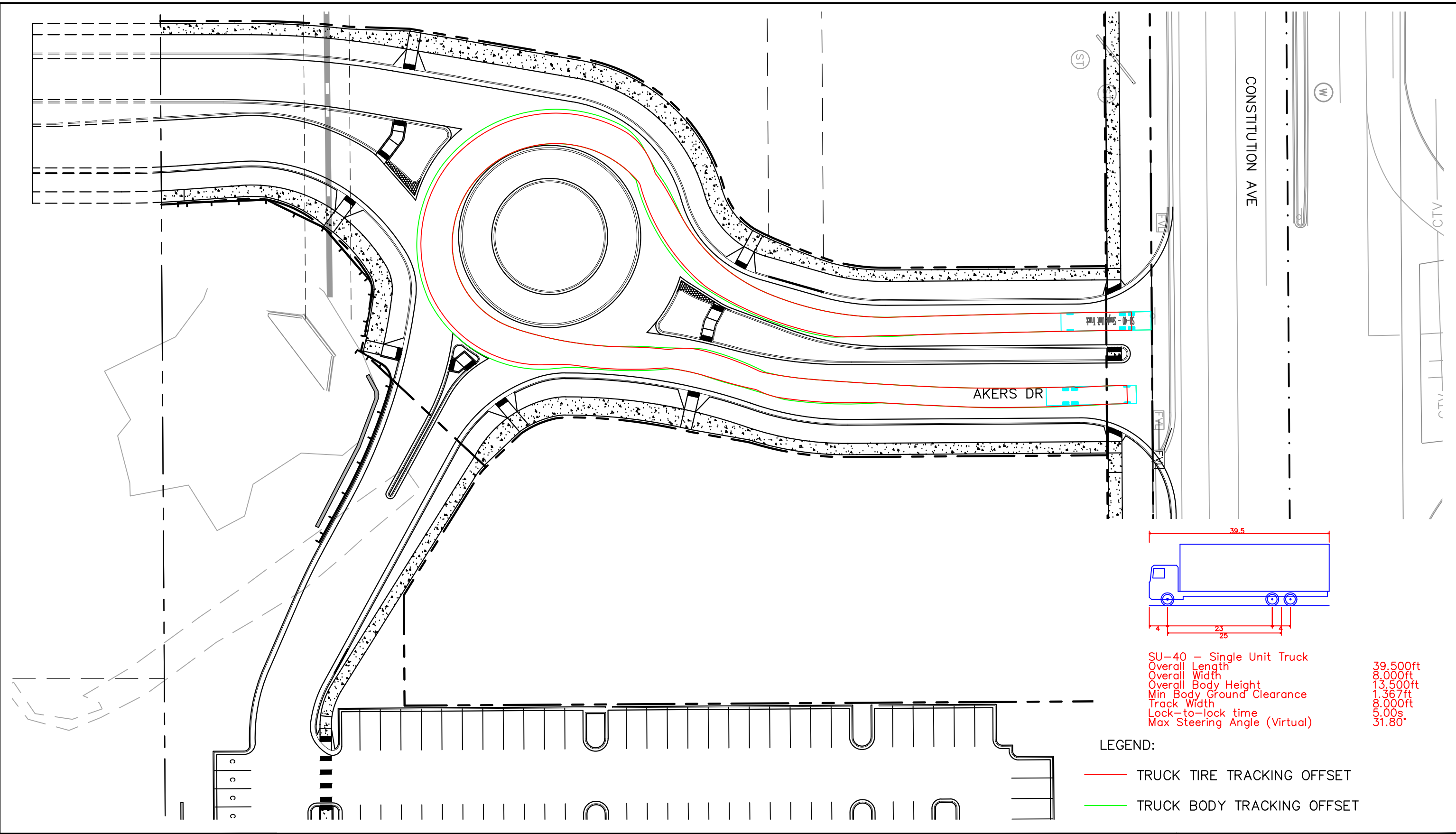
- TRUCK TIRE TRACKING OFFSET
- TRUCK BODY TRACKING OFFSET



SU-40 - Single Unit Truck	
Overall Length	39.500ft
Overall Width	8.000ft
Overall Body Height	13.500ft
Min Body Ground Clearance	1.367ft
Track Width	8.000ft
Lock-to-lock time	9.00s
Max Steering Angle (Virtual)	31.80°

LEGEND:

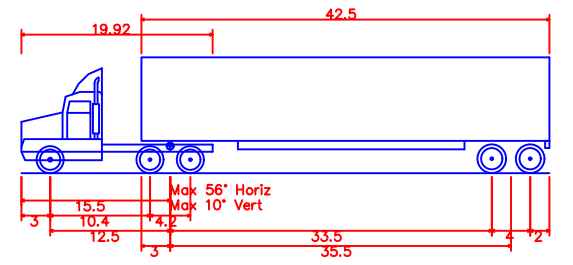
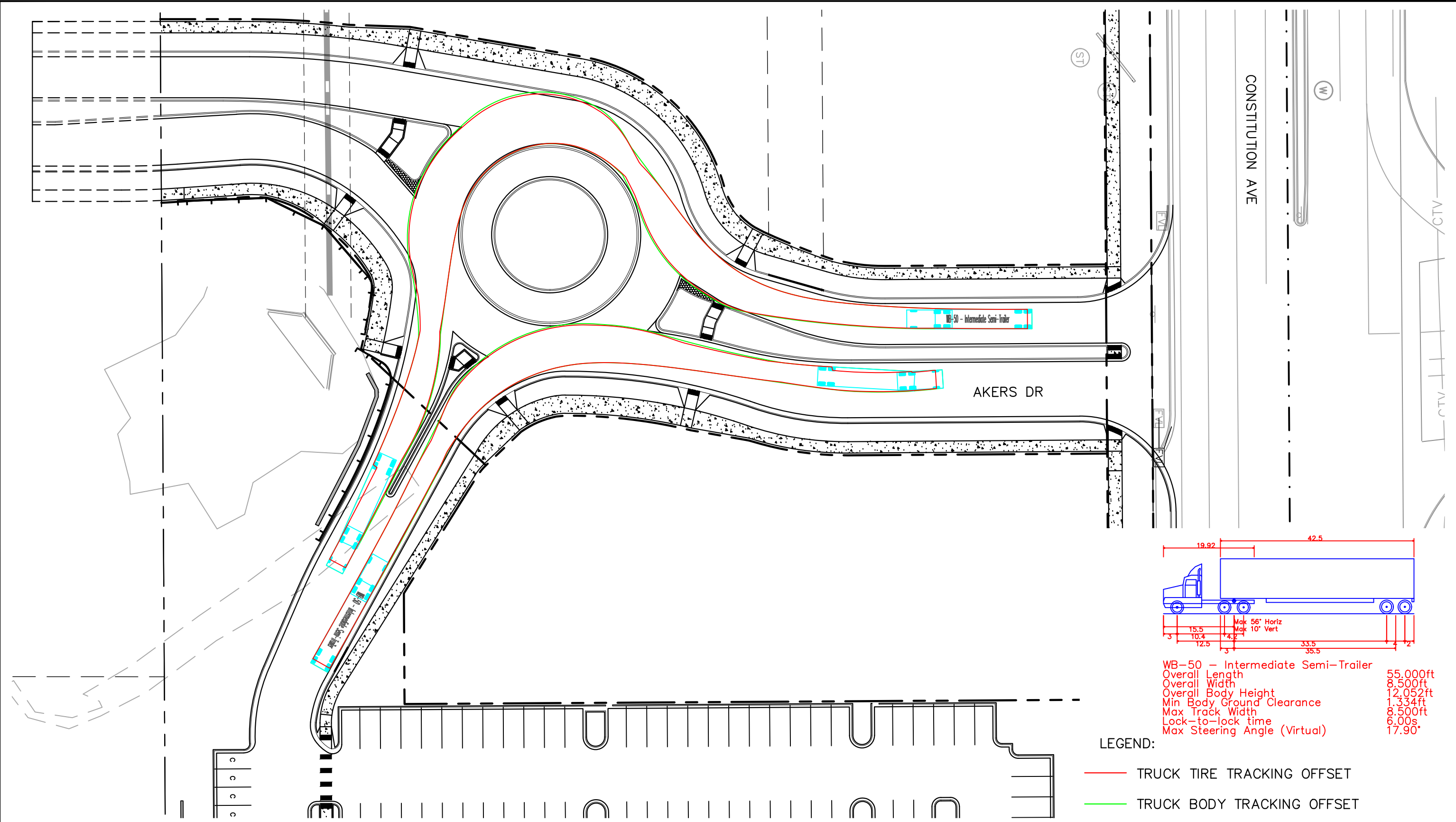
- TRUCK TIRE TRACKING OFFSET
- TRUCK BODY TRACKING OFFSET



SU-40 - Single Unit Truck
Overall Length 39.500ft
Overall Width 8.000ft
Overall Body Height 13.500ft
Min Body Ground Clearance 1.367ft
Track Width 8.000ft
Lock-to-lock time 5.00s
Max Steering Angle (Virtual) 31.80°

LEGEND:

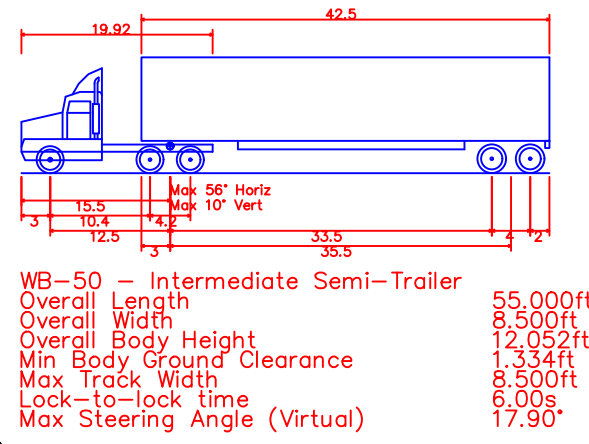
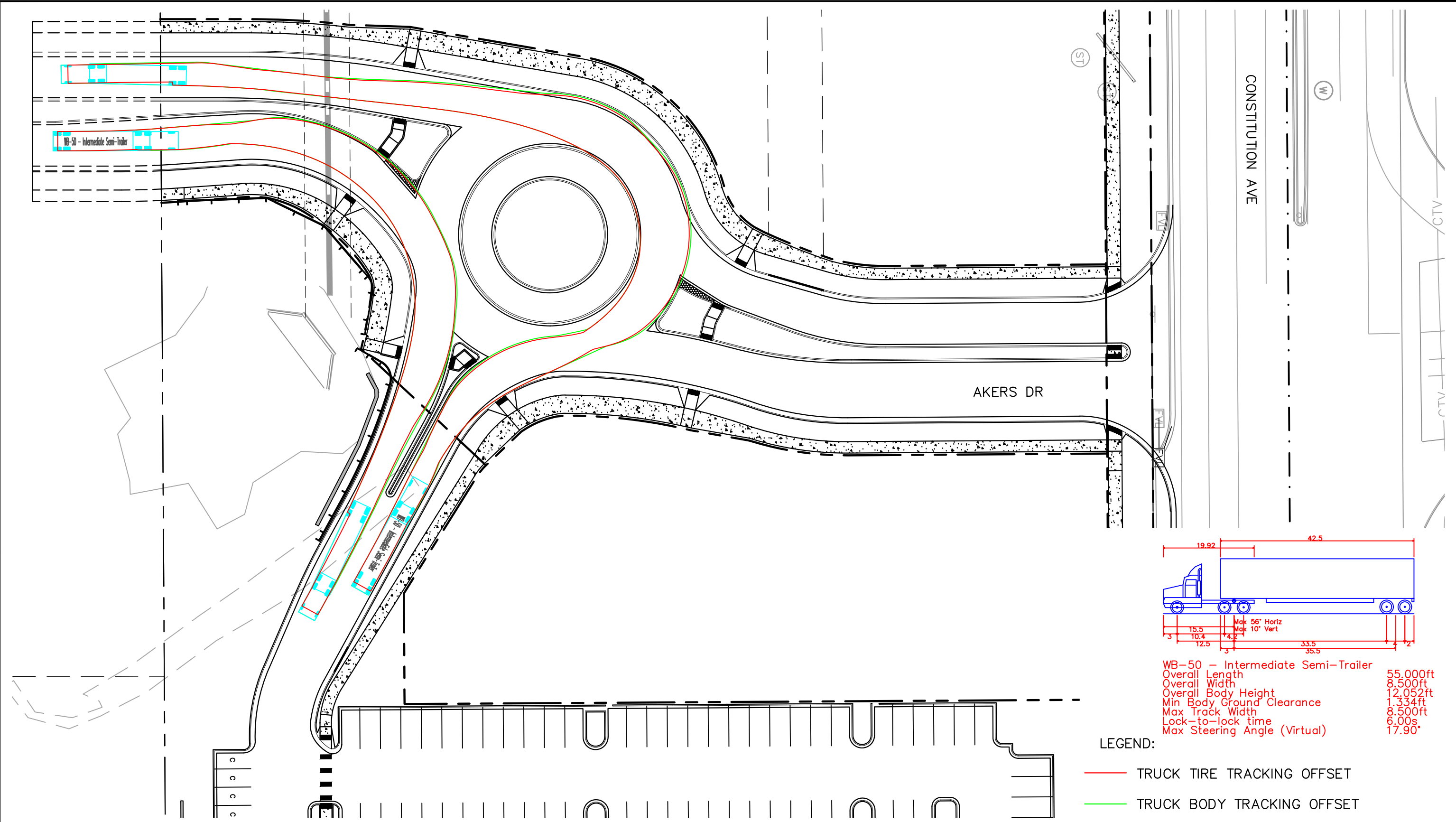
- TRUCK TIRE TRACKING OFFSET
- TRUCK BODY TRACKING OFFSET



WB-50 - Intermediate Semi-Trailer	
Overall Length	55.00ft
Overall Width	8.50ft
Overall Body Height	12.05ft
Min Body Ground Clearance	1.33ft
Max Track Width	8.50ft
Lock-to-lock time	6.00s
Max Steering Angle (Virtual)	17.90°

LEGEND:

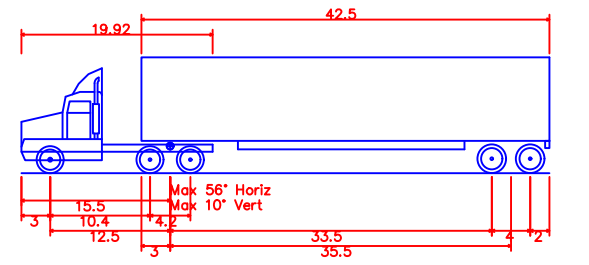
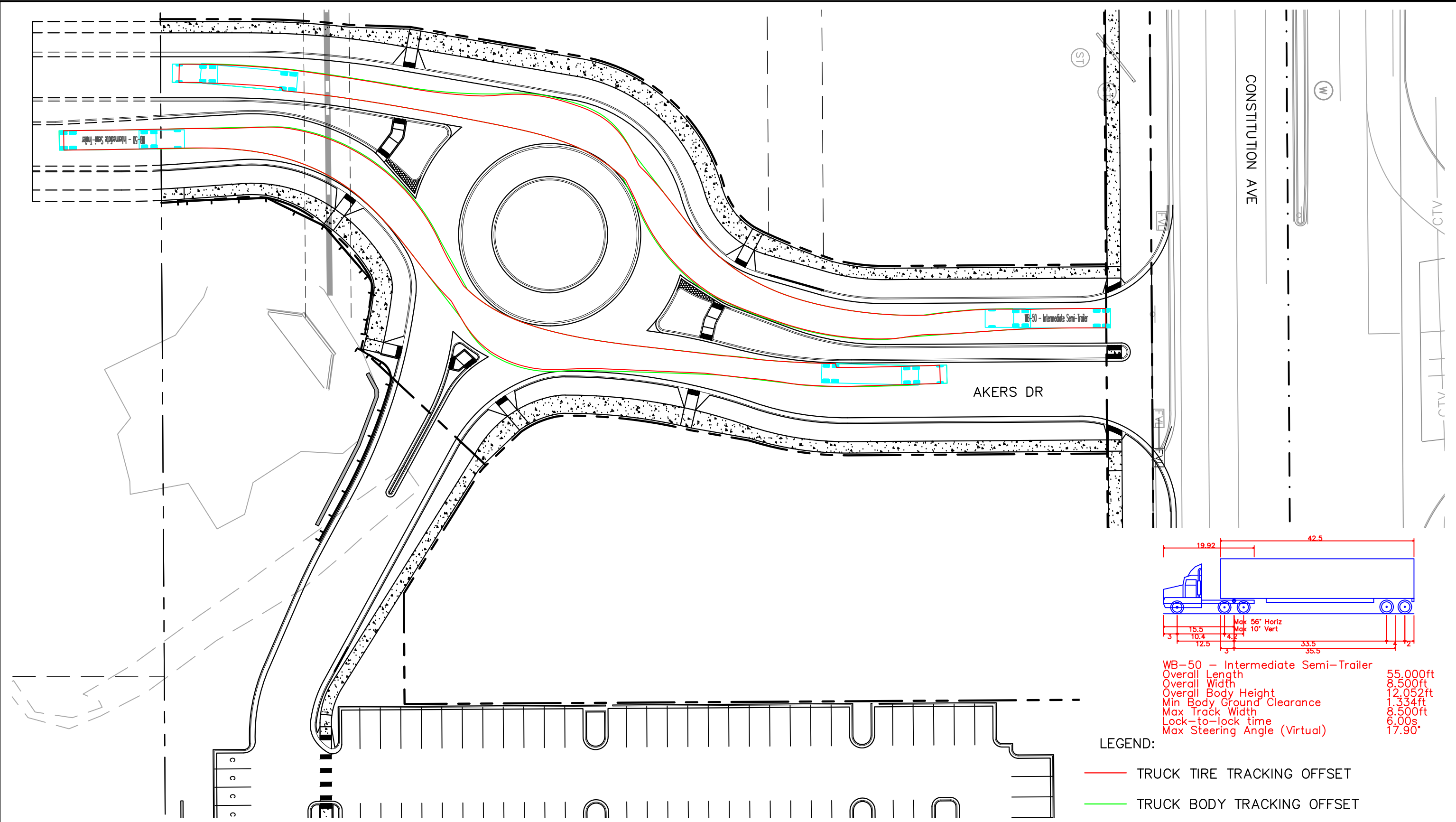
- TRUCK TIRE TRACKING OFFSET
- TRUCK BODY TRACKING OFFSET



LEGEND:

— TRUCK TIRE TRACKING OFFSET

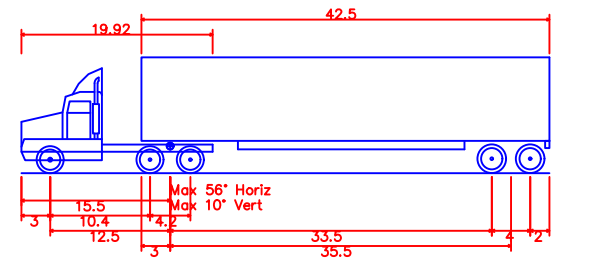
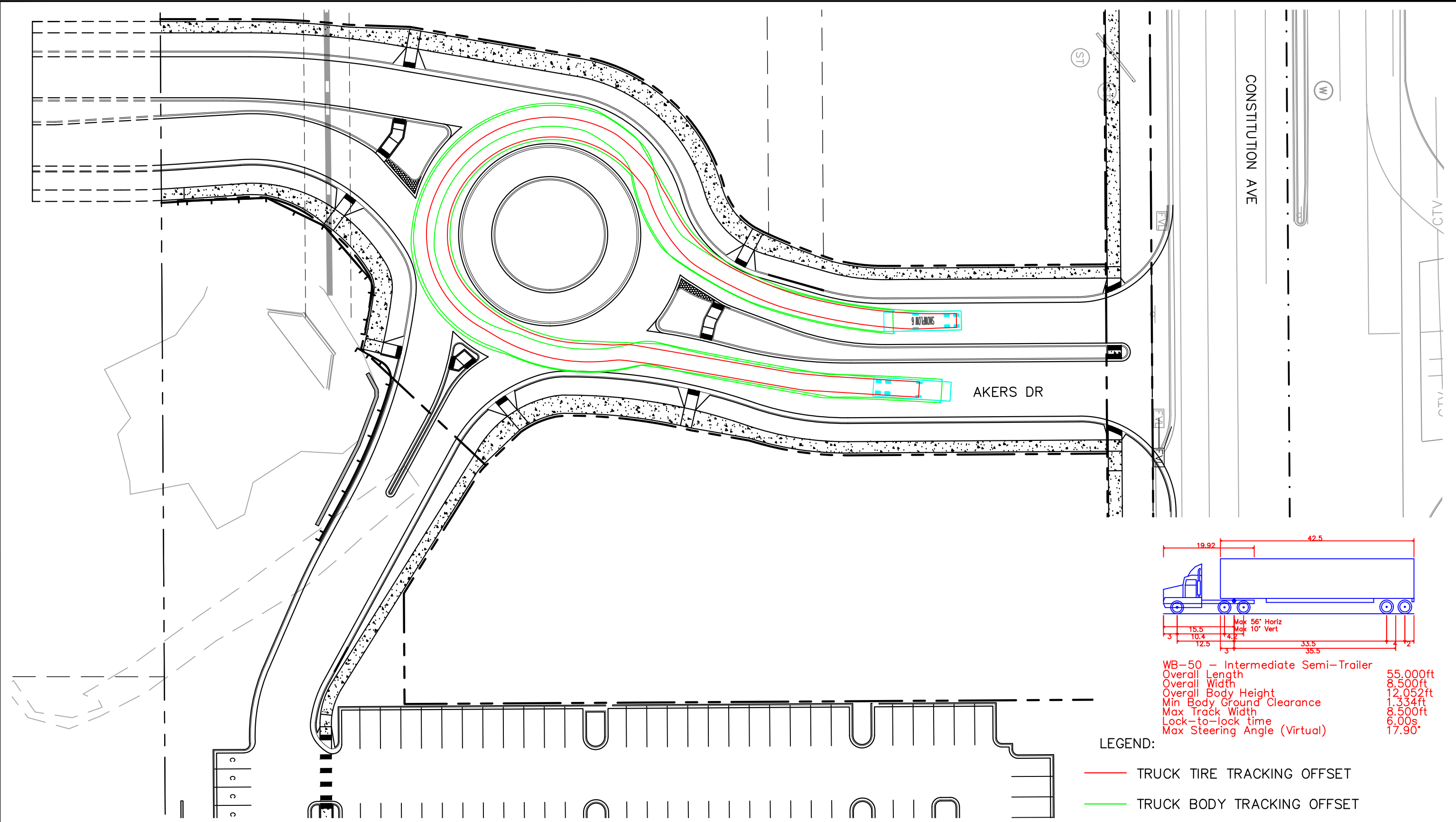
— TRUCK BODY TRACKING OFFSET



WB-50 - Intermediate Semi-Trailer	
Overall Length	55.00ft
Overall Width	8.50ft
Overall Body Height	12.05ft
Min Body Ground Clearance	1.33ft
Max Track Width	8.50ft
Lock-to-lock time	6.00s
Max Steering Angle (Virtual)	17.90°

LEGEND:

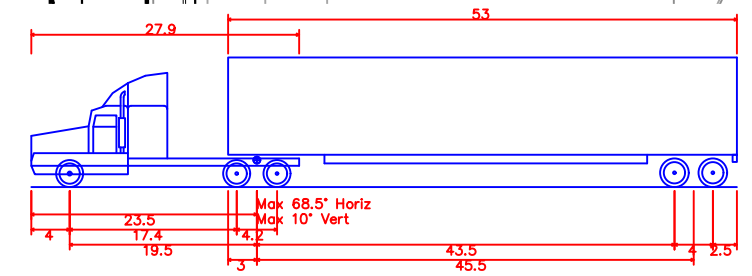
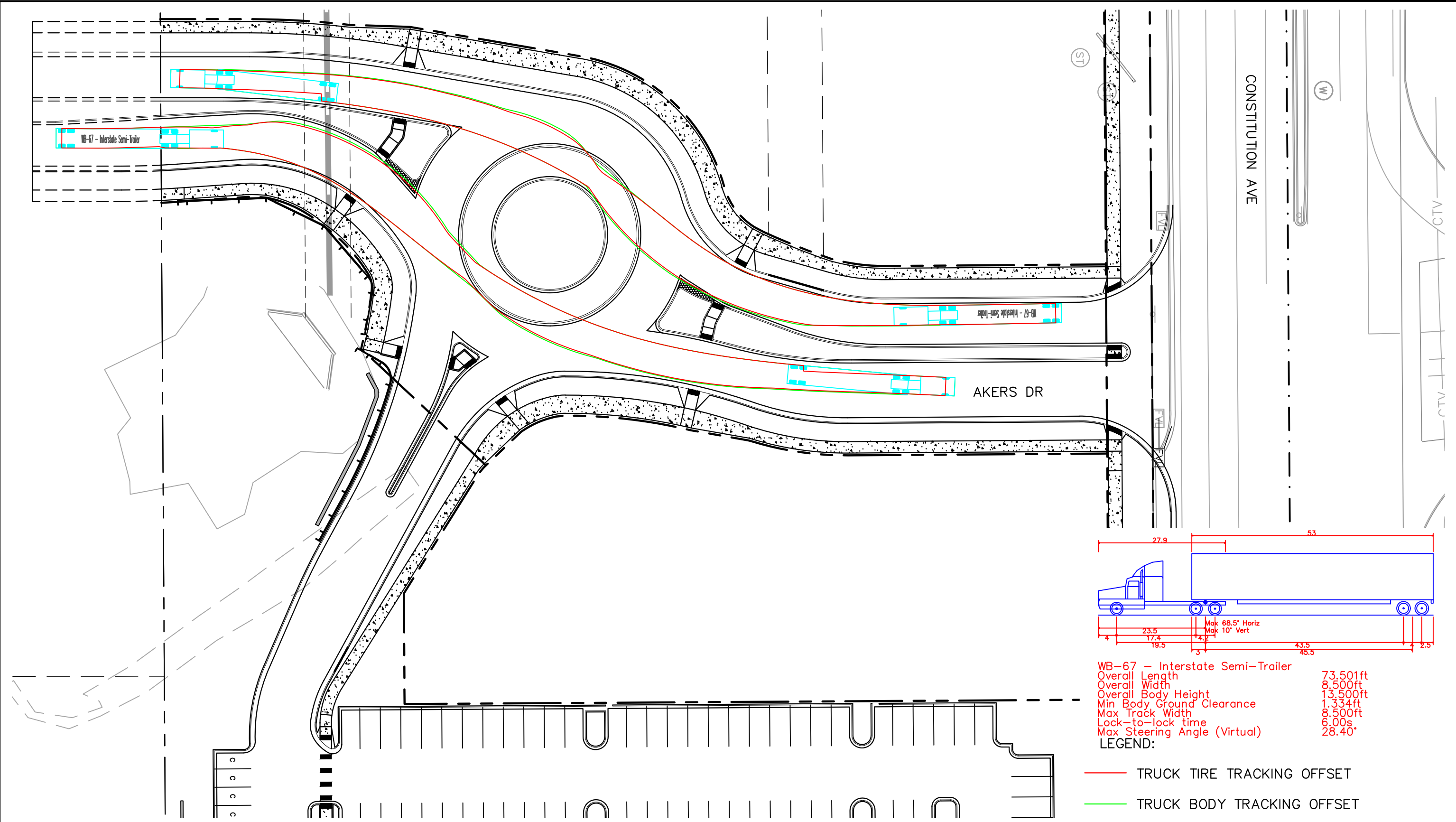
- TRUCK TIRE TRACKING OFFSET
- TRUCK BODY TRACKING OFFSET



WB-50 - Intermediate Semi-Trailer	
Overall Length	55.00ft
Overall Width	8.500ft
Overall Body Height	12.052ft
Min Body Ground Clearance	1.334ft
Max Track Width	8.500ft
Lock-to-lock time	6.00s
Max Steering Angle (Virtual)	17.90°

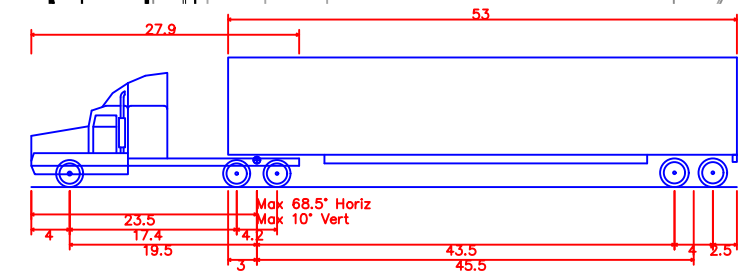
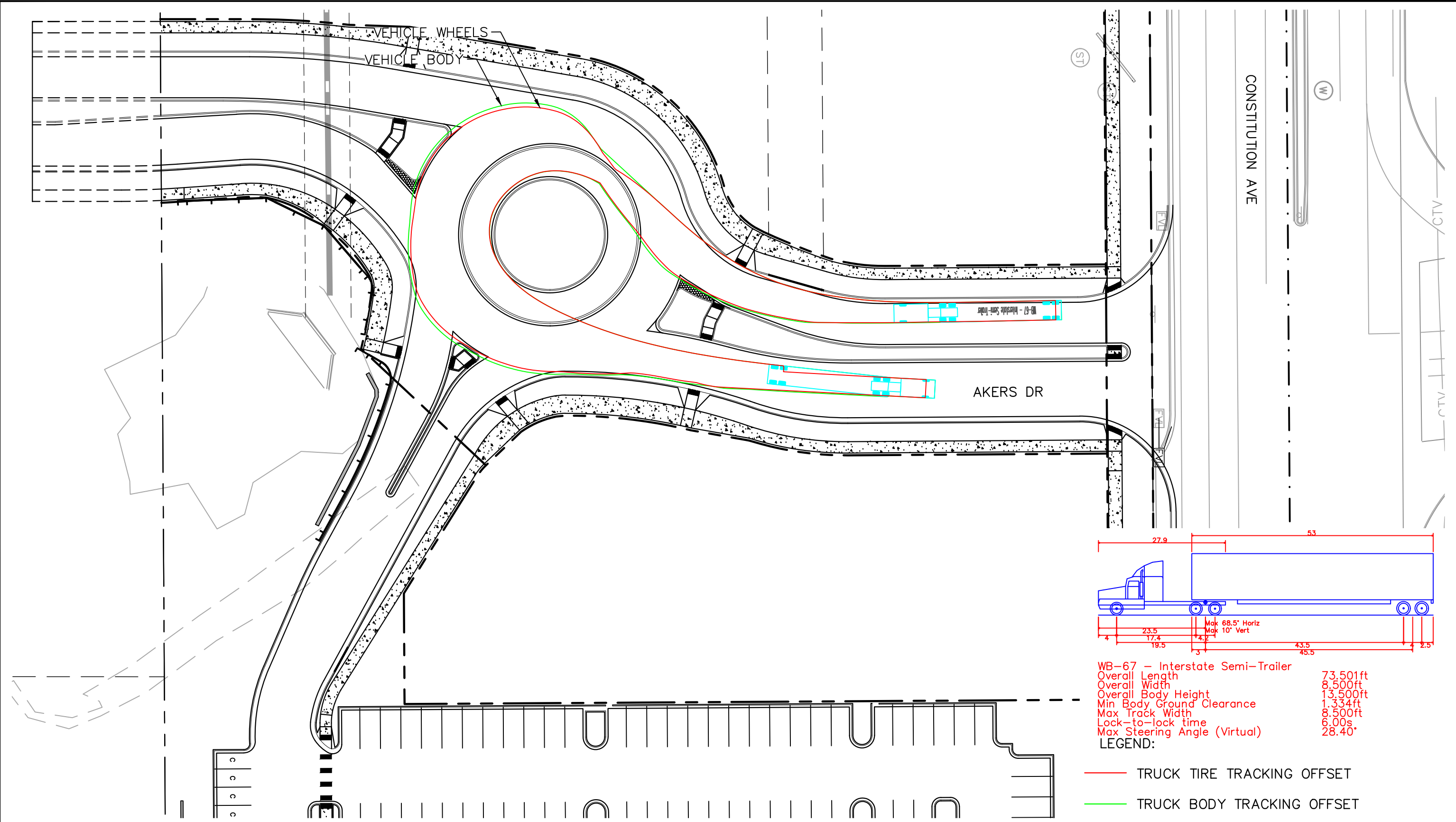
LEGEND:

- TRUCK TIRE TRACKING OFFSET
- TRUCK BODY TRACKING OFFSET



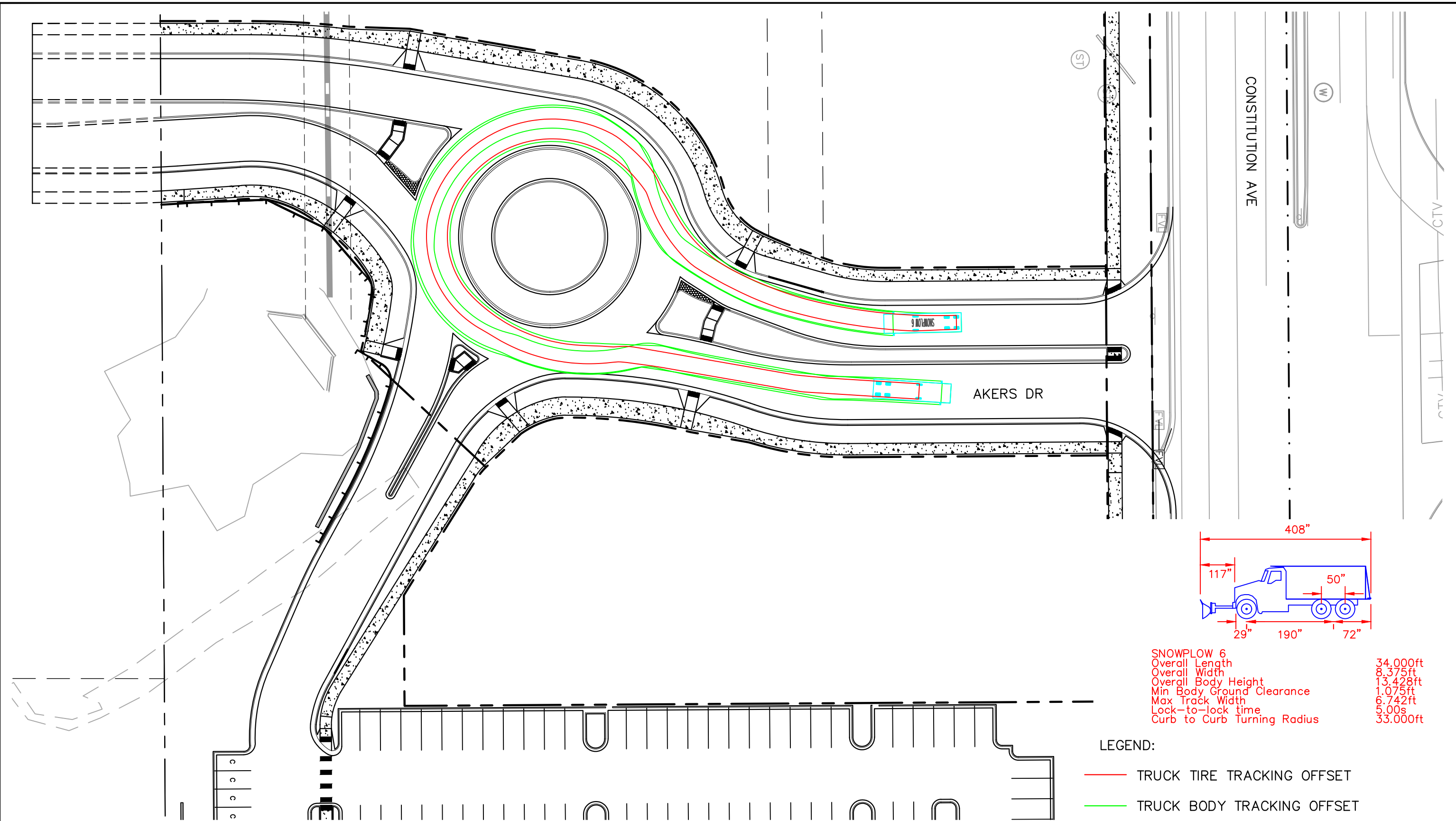
WB-67 - Interstate Semi-Trailer	
Overall Length	73.501ft
Overall Width	8.500ft
Overall Body Height	13.500ft
Min Body Ground Clearance	1.334ft
Max Track Width	8.500ft
Lock-to-lock time	6.00s
Max Steering Angle (Virtual)	28.40°

- LEGEND:
- TRUCK TIRE TRACKING OFFSET
 - TRUCK BODY TRACKING OFFSET



WB-67 - Interstate Semi-Trailer	
Overall Length	73.501ft
Overall Width	8.500ft
Overall Body Height	13.500ft
Min Body Ground Clearance	1.334ft
Max Track Width	8.500ft
Lock-to-lock time	6.00s
Max Steering Angle (Virtual)	28.40°

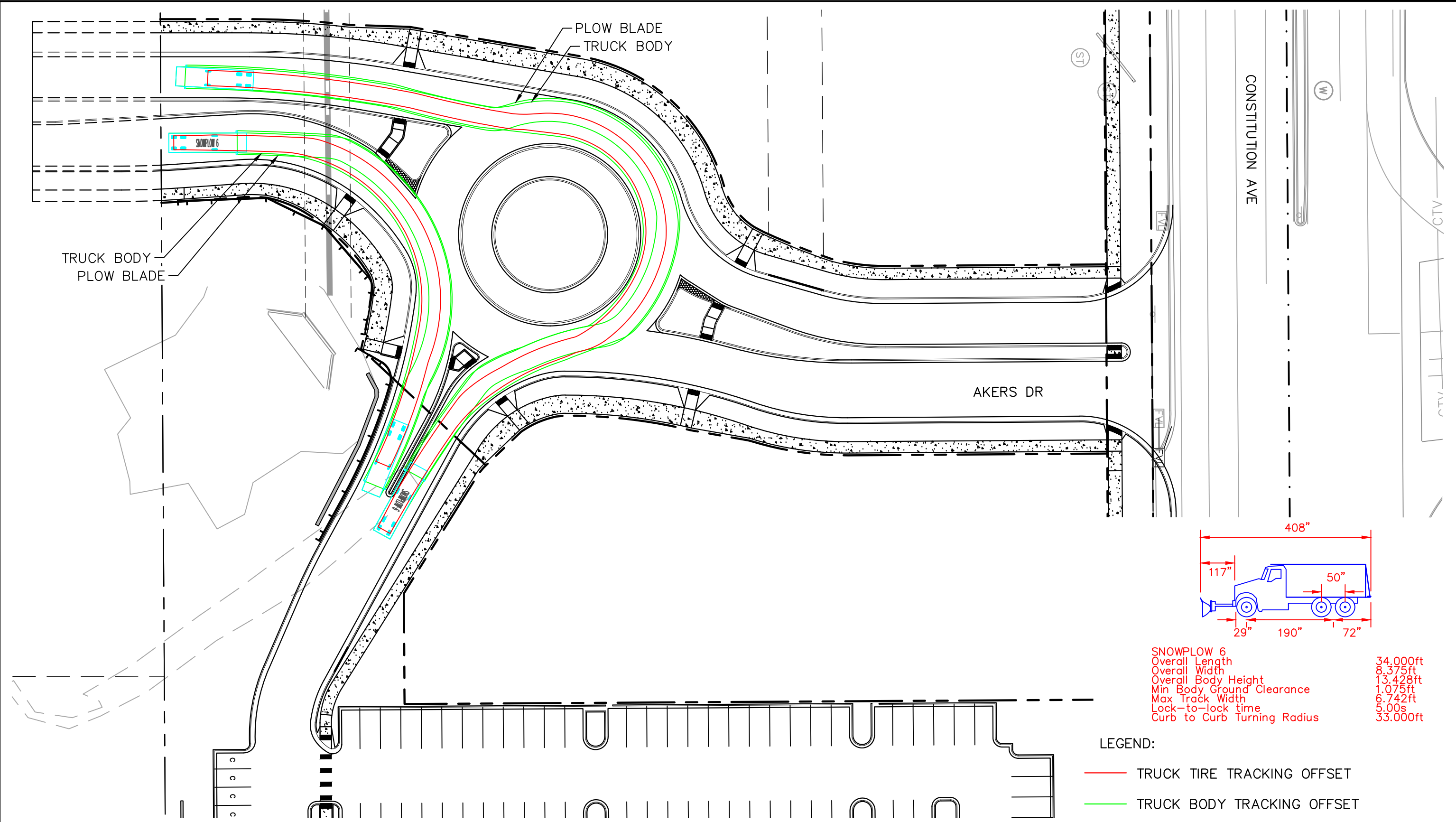
- LEGEND:
- TRUCK TIRE TRACKING OFFSET
 - TRUCK BODY TRACKING OFFSET



SNOWPLOW 6	
Overall Length	34.000ft
Overall Width	8.375ft
Overall Body Height	13.428ft
Min Body Ground Clearance	1.075ft
Max Track Width	6.742ft
Lock-to-lock time	5.00s
Curb to Curb Turning Radius	33.000ft

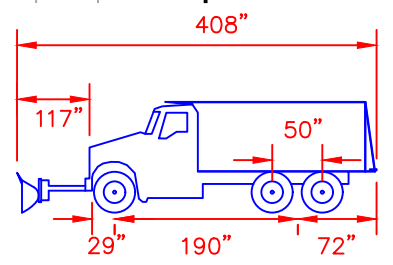
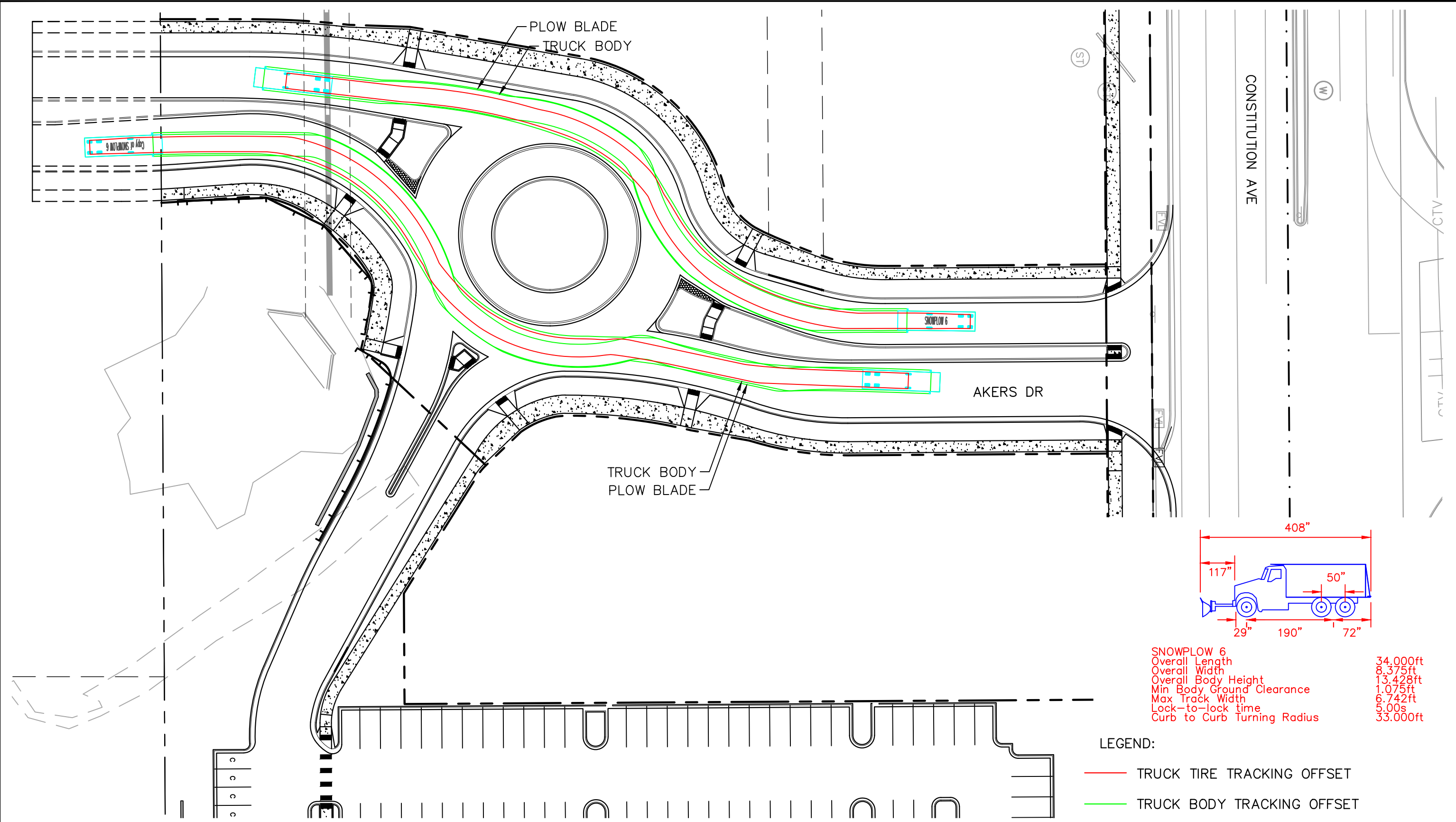
LEGEND:

- TRUCK TIRE TRACKING OFFSET
- TRUCK BODY TRACKING OFFSET



SNOWPLOW 6	
Overall Length	34.000ft
Overall Width	8.375ft
Overall Body Height	13.428ft
Min Body Ground Clearance	1.075ft
Max Track Width	6.742ft
Lock-to-lock time	5.00s
Curb to Curb Turning Radius	33.000ft

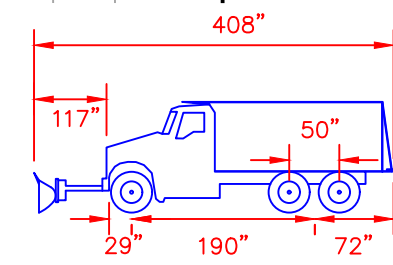
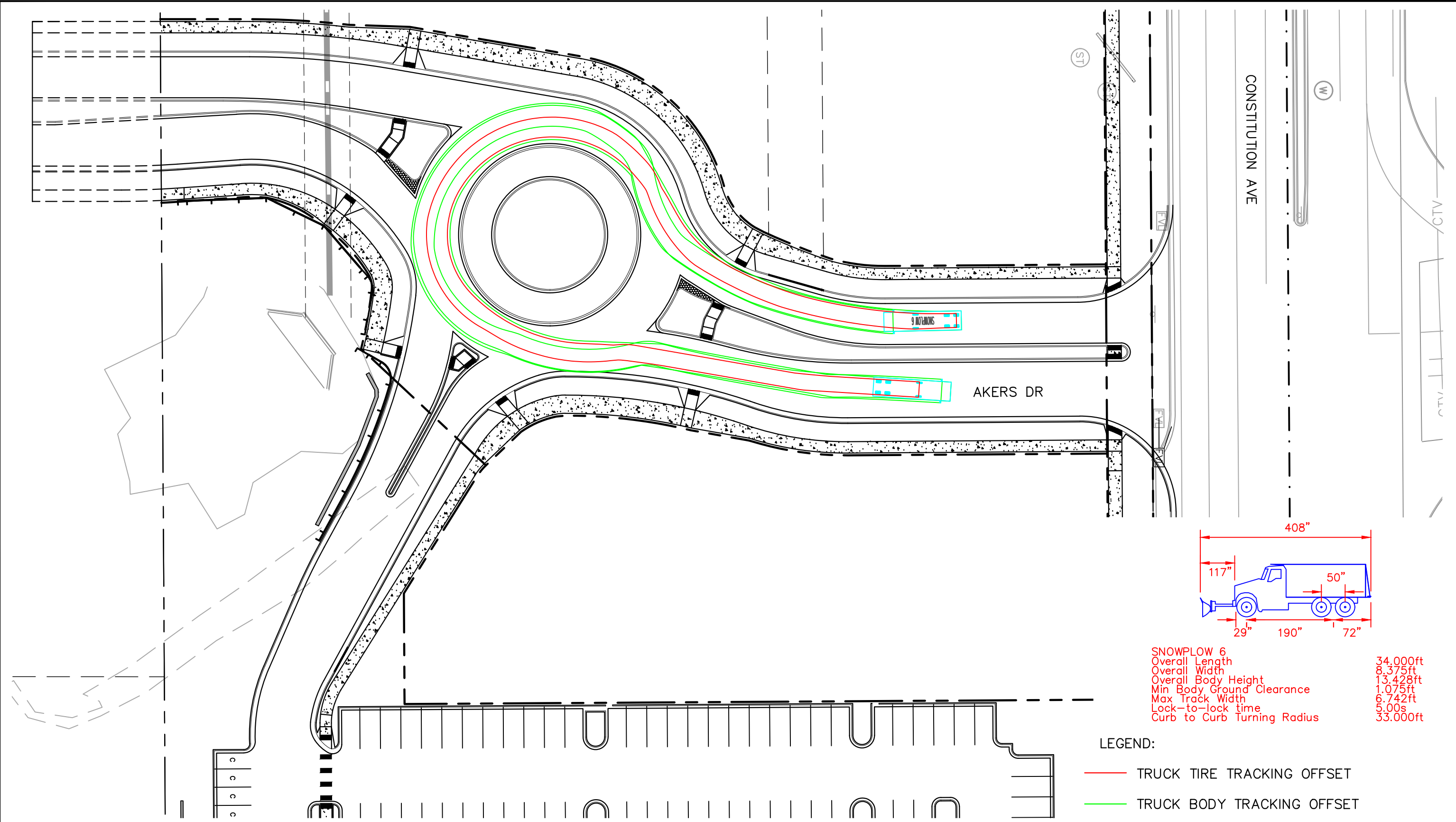
- LEGEND:
- TRUCK TIRE TRACKING OFFSET
 - TRUCK BODY TRACKING OFFSET



SNOWPLOW 6	
Overall Length	34.00ft
Overall Width	8.375ft
Overall Body Height	13.428ft
Min Body Ground Clearance	1.075ft
Max Track Width	6.742ft
Lock-to-lock time	5.00s
Curb to Curb Turning Radius	33.00ft

LEGEND:

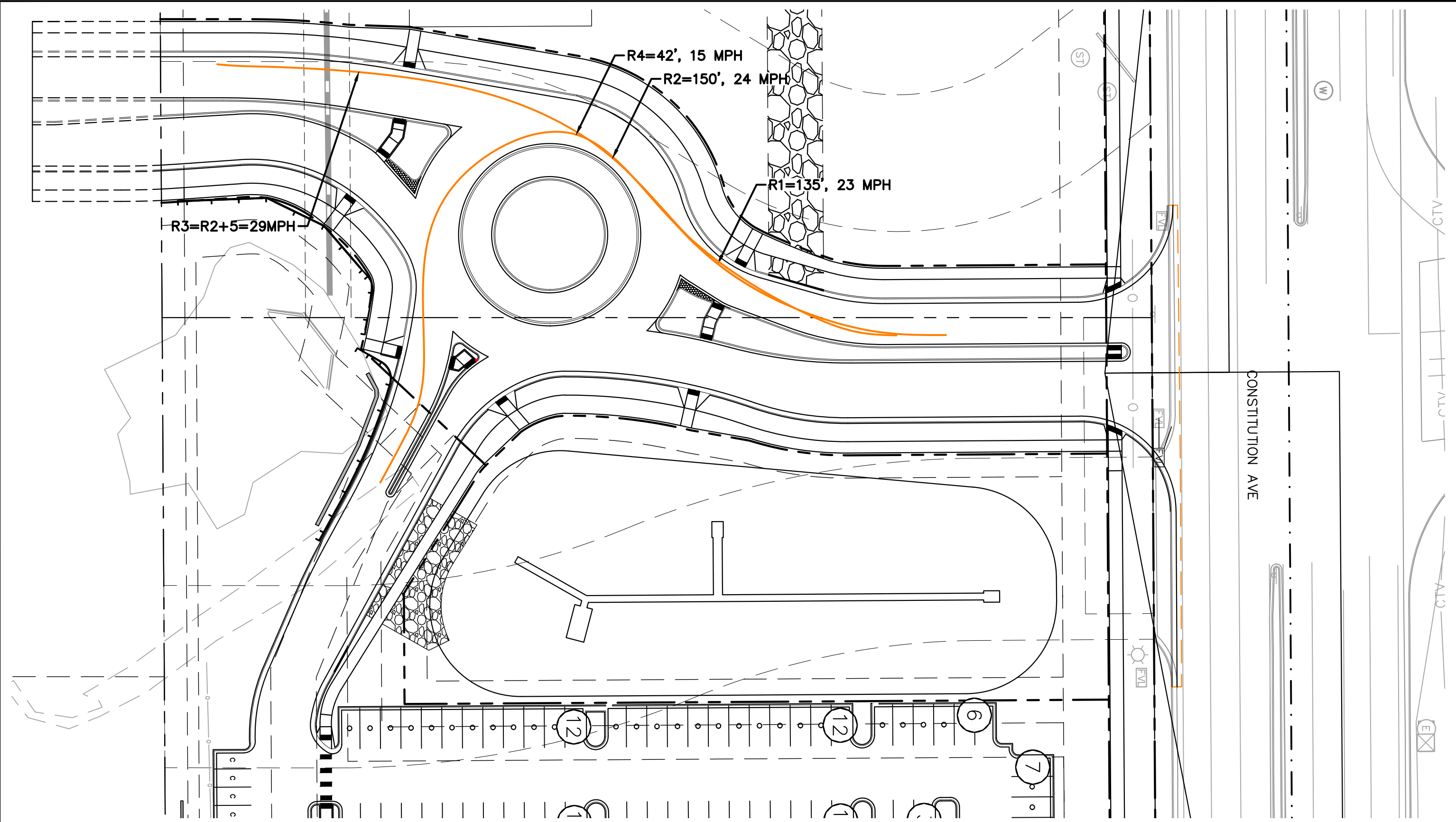
- TRUCK TIRE TRACKING OFFSET
- TRUCK BODY TRACKING OFFSET

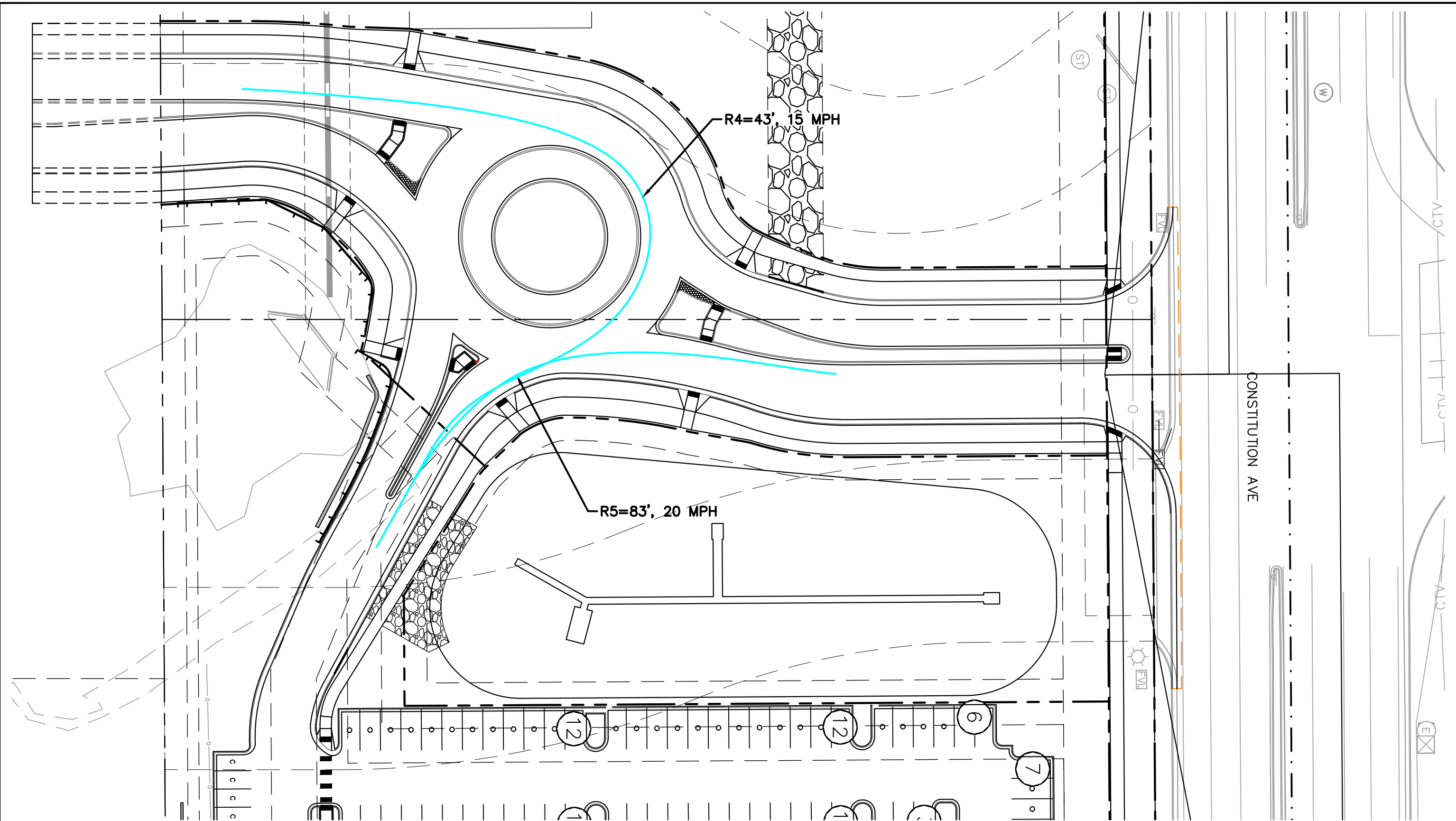


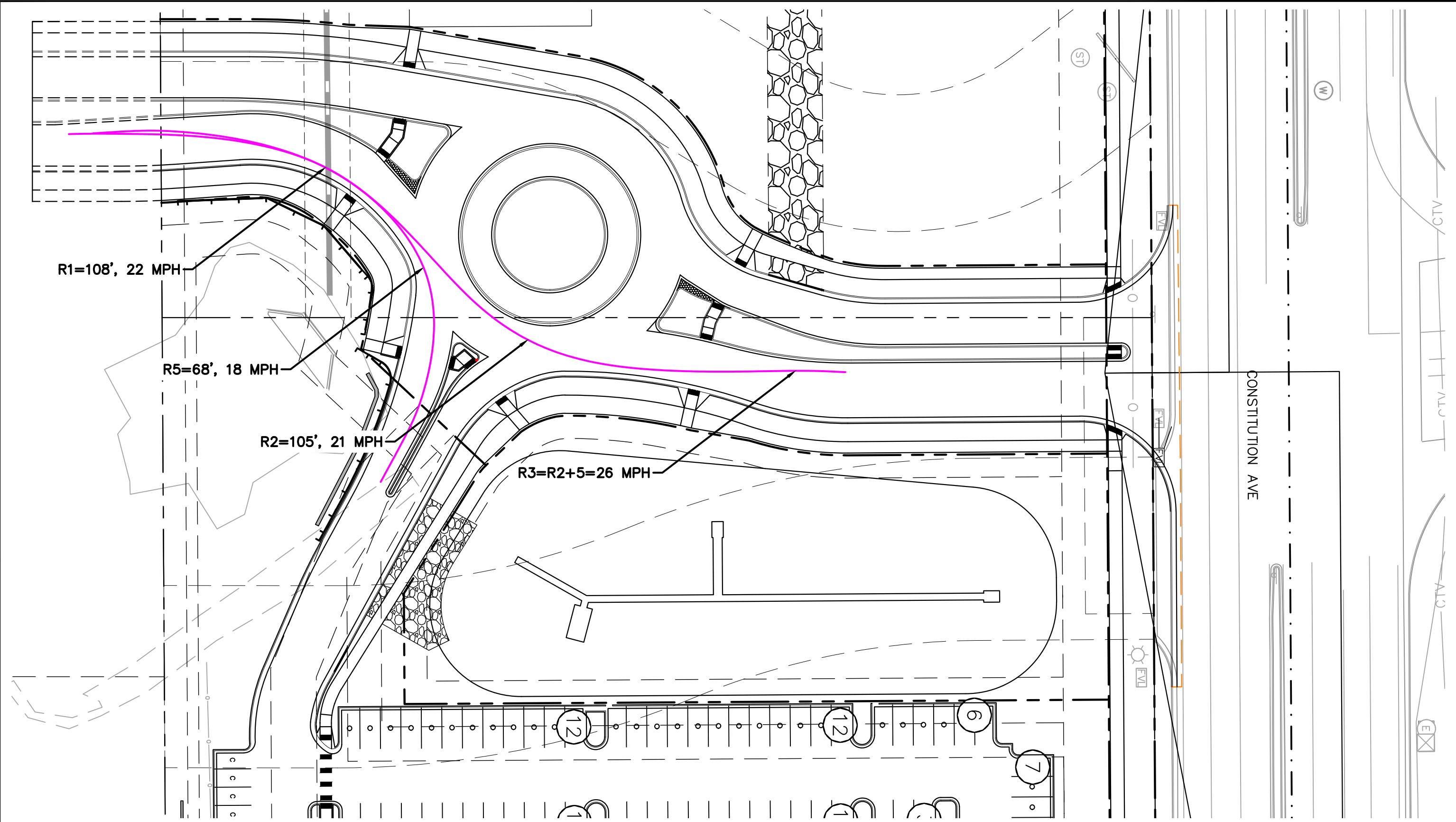
SNOWPLOW 6	
Overall Length	34.00ft
Overall Width	8.375ft
Overall Body Height	13.428ft
Min Body Ground Clearance	1.075ft
Max Track Width	6.742ft
Lock-to-lock time	5.00s
Curb to Curb Turning Radius	33.00ft

LEGEND:

- TRUCK TIRE TRACKING OFFSET
- TRUCK BODY TRACKING OFFSET







Kimley»Horn

© 2020 KIMLEY-HORN AND ASSOCIATES, INC.
4582 SOUTH ULSTER STREET, SUITE 1500, DENVER, CO 80237
PHONE: 303-228-2300

AKERS DR & ACCESS RD ROUNDABOUT

LEG 3 - NB FASTEST PATH

GRAPHIC SCALE IN FEET
0 10 20 40



EXHIBIT:

21

