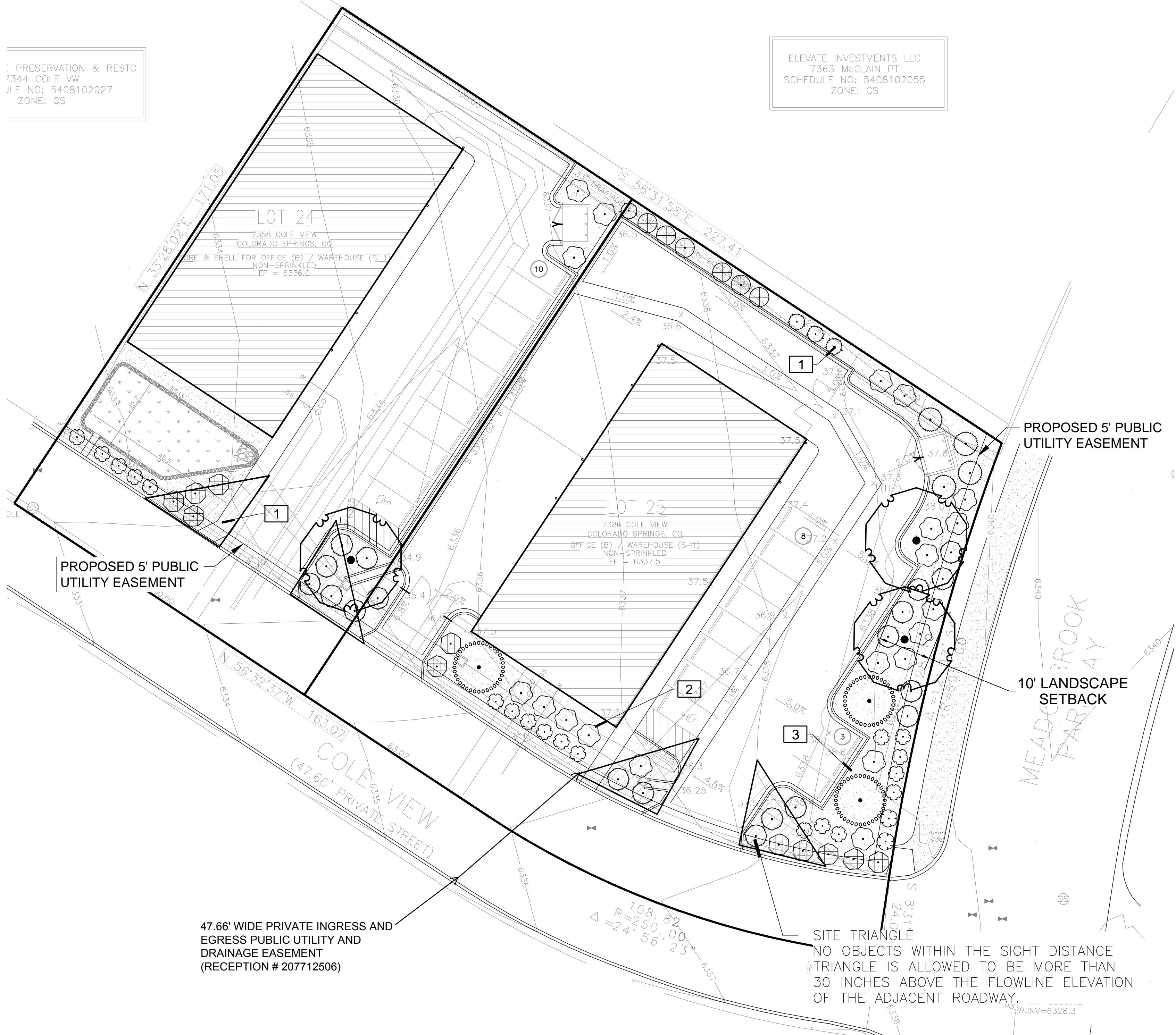


7. PRESERVATION & RESTO
7344 COLE VW
FILE NO: 5408102027
ZONE: CS

ELEVATE INVESTMENTS LLC
7363 McCLAIN PT
SCHEDULE NO: 5408102055
ZONE: CS

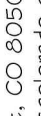
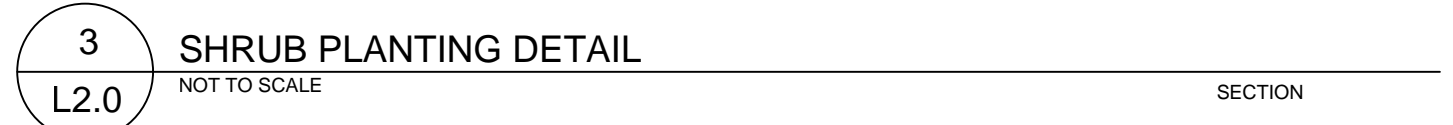


(Note: All references to "Contractor" are specific to "Landscape Contractor" unless notified as "General or other type of Contractor")

- TREES IN COBBLE/ROCK MULCH TO RECEIVE 4" DIAMETER OF WOOD MULCH, 3" DEEP. SHRUBS AND GROUNDCOVERS IN COBBLE/ROCK MULCH AREAS TO RECEIVE WOOD MULCH RING MINIMUM 6" LARGER RADIUS THAN ROOT BALL OR CONTAINER SIZE, 3" DEEP. NO FABRIC UNDERLAYMENT IN WOOD MULCH AREAS.

USE PERMEABLE FABRIC UNDERLAYMENT FOR ALL COBBLE/AGGREGATE AREAS WITH SLOPES 3:1 AND LESS. USE QUICK RELEASE ORGANIC PRE-EMERGENT HERBICIDE FOR ALL MULCHED AND PERENNIAL/PLANTING BEDS (AND FOR COBBLE/AGGREGATE AREAS WITH SLOPES EXCEEDING 3:1 GRADE.

1. MARK THE NORTH SIDE OF TREE IN THE NURSERY, AND ROTATE TREE TO FACE NORTH AT THE SITE WHENEVER POSSIBLE.
2. AT TIME OF PLANTING, DO NOT REMOVE OR CUT LEADER AND PRUNE ONLY DEAD OR BROKEN BRANCHES. CROSS OVER BRANCHES, AND WEAK OR NARROW CRITCHES. SOME INTERIOR TWIGS AND LATERAL BRANCHES MAY BE PRUNED, HOWEVER, DO NOT REMOVE THE TERMINAL BUDS OF BRANCHES THAT EXTEND TO THE EDGE OF THE CROWN.
3. STRUCTURAL PRUNING SHOULD NOT BEGIN UNTIL AFTER ESTABLISHMENT PERIOD, USUALLY TWO GROWING SEASONS.
4. KEEP PLANTS MOIST AND SHADED UNTIL PLANTING.
5. DO NOT FERTILIZE FOR AT LEAST ONE GROWING SEASON.
6. AMENDED BACKFILL SHALL BE AS STATED ON THIS SHEET.
7. WRAP TRUNK ON EXPOSED SITES AND SPECIES WITH THIN BARK. USE ELECTRICAL OR DUCT TAPE, NOT TWINE.
8. COORDINATE WITH CITY FORESTRY FOR CURRENT INSECT AND DISEASE RECOMMENDATIONS PRIOR TO PLANTING.
9. DEEP WATER ALL PLANTS AT TIME OF PLANTING.



NDS
NATURAL DESIGN SOLUTIONS

**Landscape Architecture
Land Planning • Irrigation Design**

5539 Colt Drive, Longmont, CO 80503
(303) 443-0388 • nell@ndscolorado.com

COVERTEC
SITE DEVELOPMENT PLAN
FINAL LANDSCAPE PLAN

PROJ. NO.:	
DATE:	06.01.17
SCALE:	See Sheet
DRAWN:	JRO
CHKD BY:	NAM
SHEET	6