

LOT 24 CLAREMONT BUSINESS PARK FIL NO 2 &  
 LOT 25 CLAREMONT BUSINESS PARK FIL NO 2

Copyright © 2017

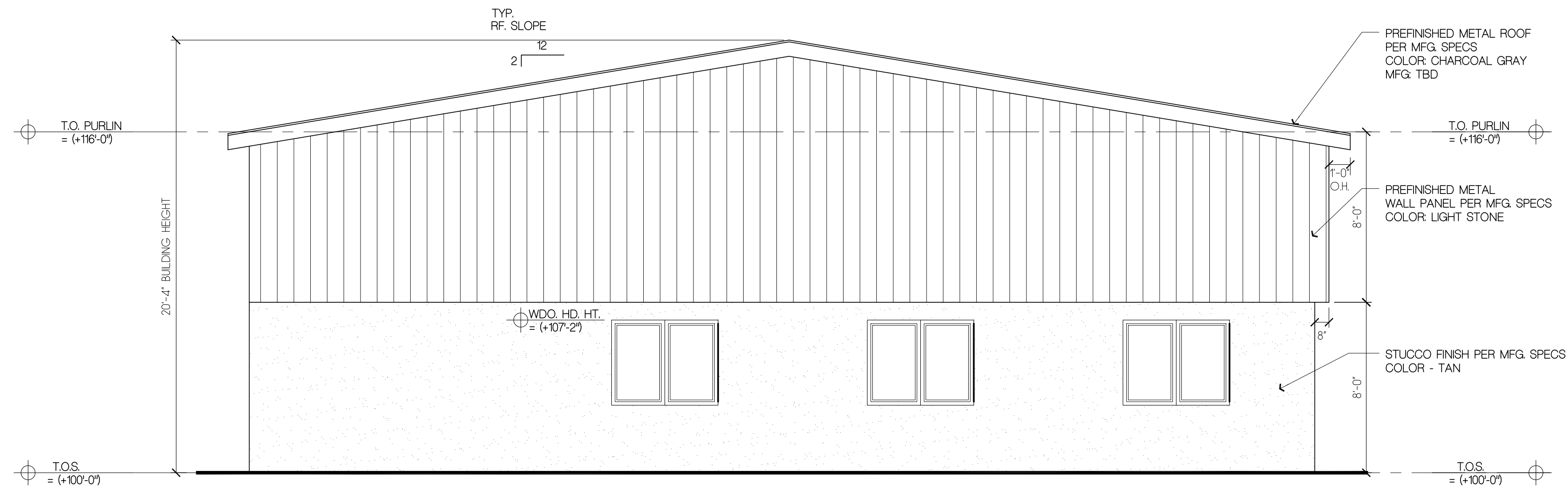


**BUCHER**  
**DESIGN STUDIO**  
 architecture • planning

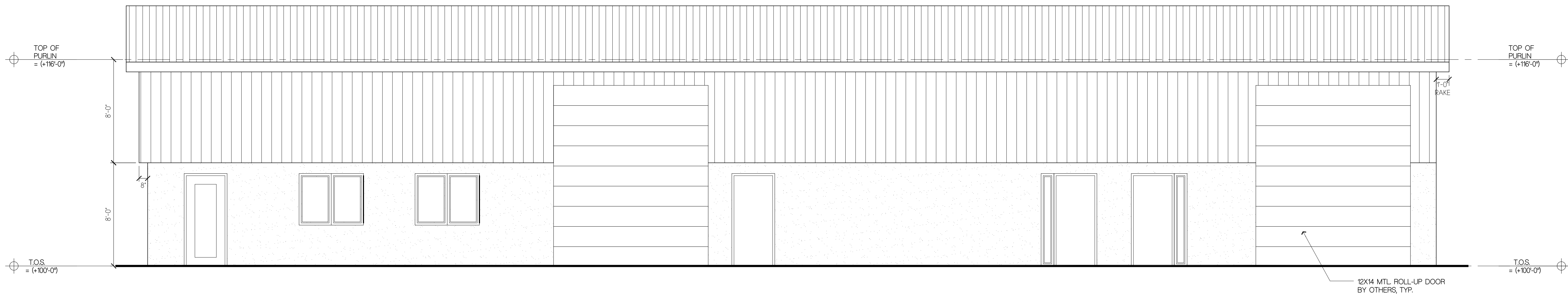
300 General Palmer Drive  
 Palmer Lake, CO 80133  
 (719) 484-0480  
 (719) 352-3641 fax  
 Brian K. Bucher, AIA  
 Architect  
 CO license no. C-4889  
 CA license no. C 23506

**PROPOSED**  
**WAREHOUSE /**  
**OFFICE FOR**

**COVERTEC**  
**INC.**



**SOUTH ELEVATION**  
 SCALE: 1/4"=1'-0"



**EAST ELEVATION**  
 SCALE: 1/4"=1'-0"

7358 & 7386 COLE VIEW  
 COLORADO SPRINGS, CO

Sheet Title:  
**EXTERIOR**  
**ELEVATIONS**

Drawing Status:  
**SITE**  
**DEVELOPMENT**  
 NOT FOR CONSTRUCTION

Revisions:  
 No. Description By Date

No.	Description	By	Date
1			

All ideas, designs, arrangements and plans indicated or represented by this drawing are owned by, and the property of BUCHER DESIGN STUDIO and were created, booked and developed for use on, and in conjunction with, the specified project. None of such ideas, designs, arrangements or plans shall be used by, or disclosed to any person, firm or corporation for any purpose whatsoever without the written permission of BUCHER DESIGN STUDIO.

Date:

08/24/17

Drawn by:

Checked by:

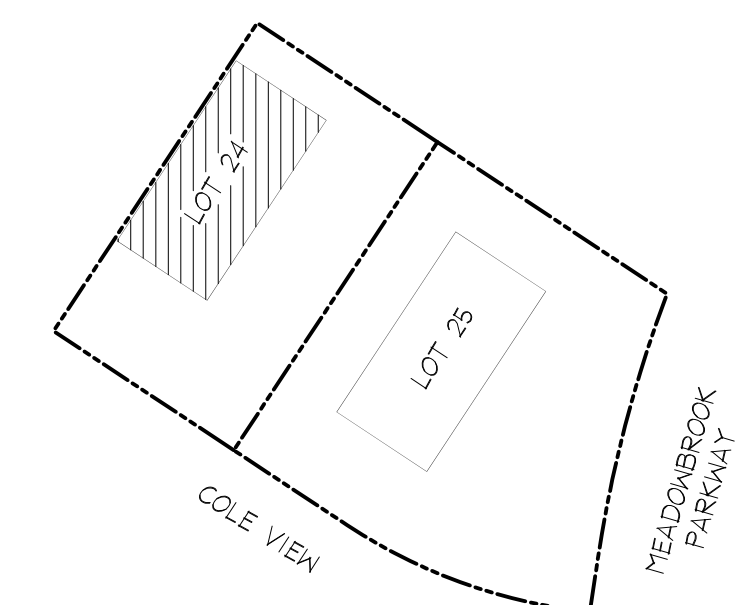
Scale:

AS NOTED

Job No.:

Sheet No.:

12  
 Of 15



**SITE INDEX**

LOT 24 CLAREMONT BUSINESS PARK FIL NO 2 &  
 LOT 25 CLAREMONT BUSINESS PARK FIL NO 2

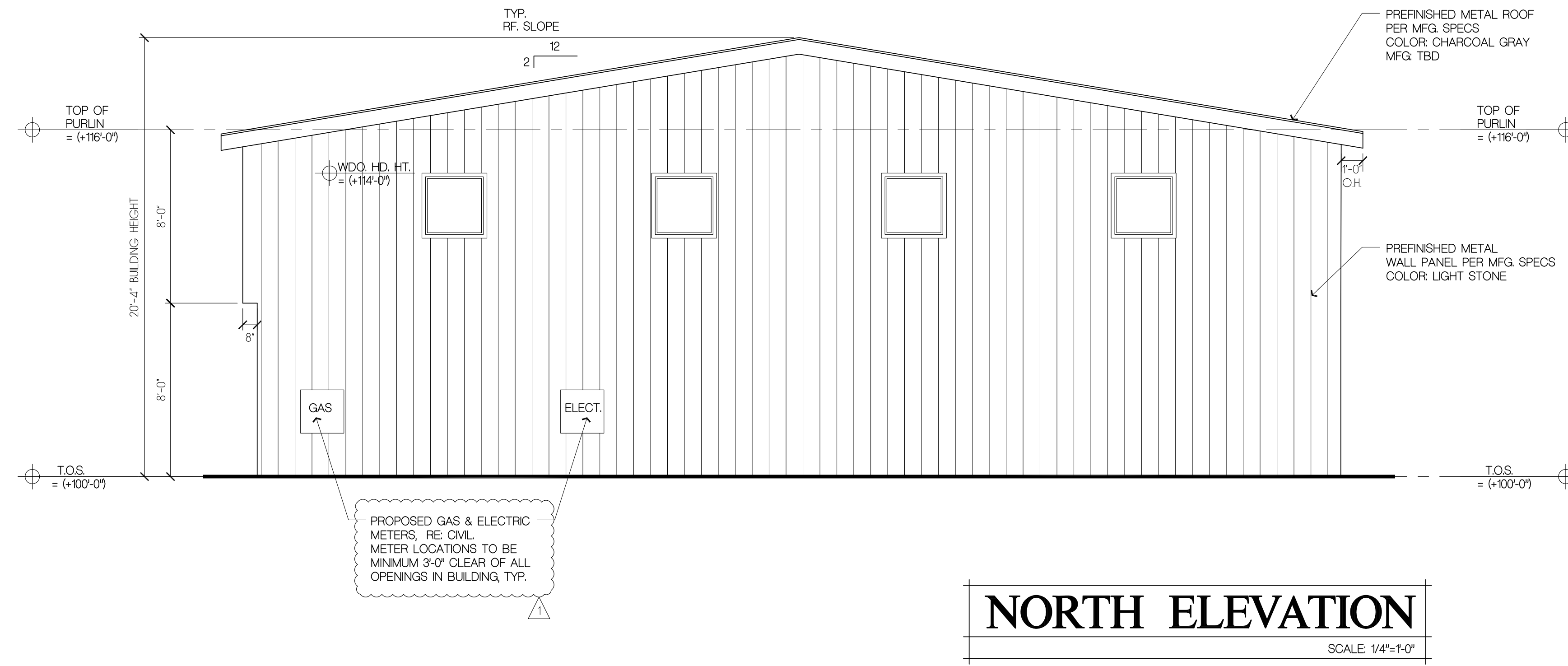
Copyright © 2017



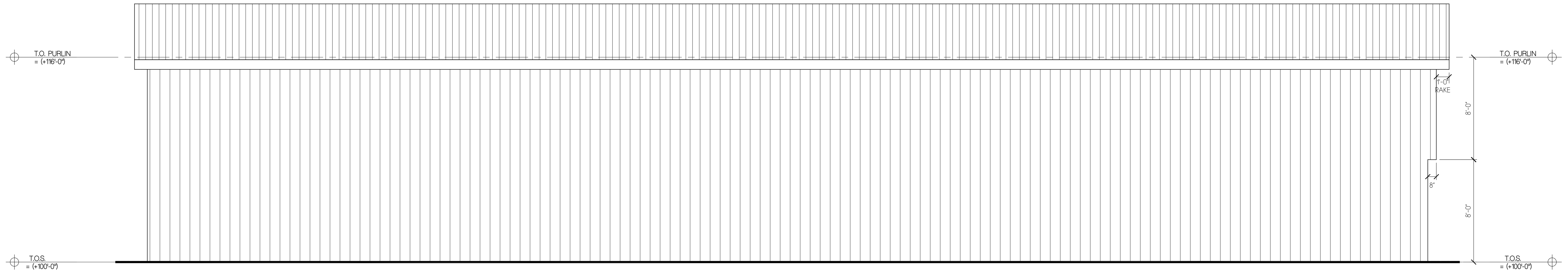
**BUCHER**  
 DESIGN STUDIO  
 architecture • planning

300 General Palmer Drive  
 Palmer Lake, CO 80133  
 (719) 484-0480  
 (719) 352-3641 fax  
 Brian K. Bucher, AIA  
 Architect  
 CO license no. C-4889  
 CA license no. C 23506

PROPOSED  
 WAREHOUSE /  
 OFFICE FOR  
  
 COVERTEC  
 INC.



**NORTH ELEVATION**  
 SCALE: 1/4"=1'-0"



**WEST ELEVATION**  
 SCALE: 1/4"=1'-0"

7358 & 7386 COLE VIEW  
 COLORADO SPRINGS, CO  
 Sheet Title:  
**EXTERIOR  
 ELEVATIONS**

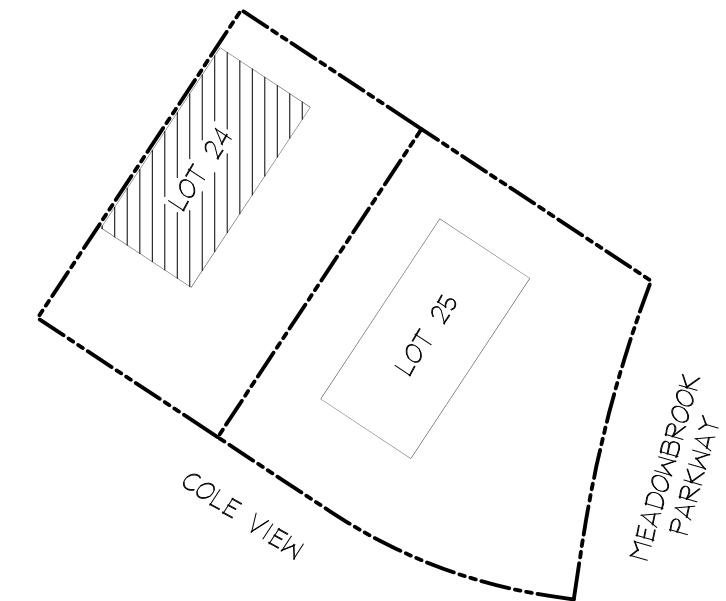
Drawing Status:  
**SITE  
 DEVELOPMENT  
 NOT FOR CONSTRUCTION**

Revisions:

No.	Description	By	Date
1	COUNTY COMMENTS		09/2/17

All ideas, designs, arrangements and plans indicated or represented by this drawing are owned by, and the property of BUCHER DESIGN STUDIO and were created, worked and developed for use on, and in conjunction with, the specified project. None of such ideas, designs, arrangements or plans shall be used by, or disclosed to any person, firm or corporation for any purpose whatsoever without the written permission of BUCHER DESIGN STUDIO.

Date: 08/24/17  
 Drawn by:  
 Checked by:  
 Scale: AS NOTED  
 Job No.:



**SITE INDEX**

Sheet No.:  
**13**  
 Of 15

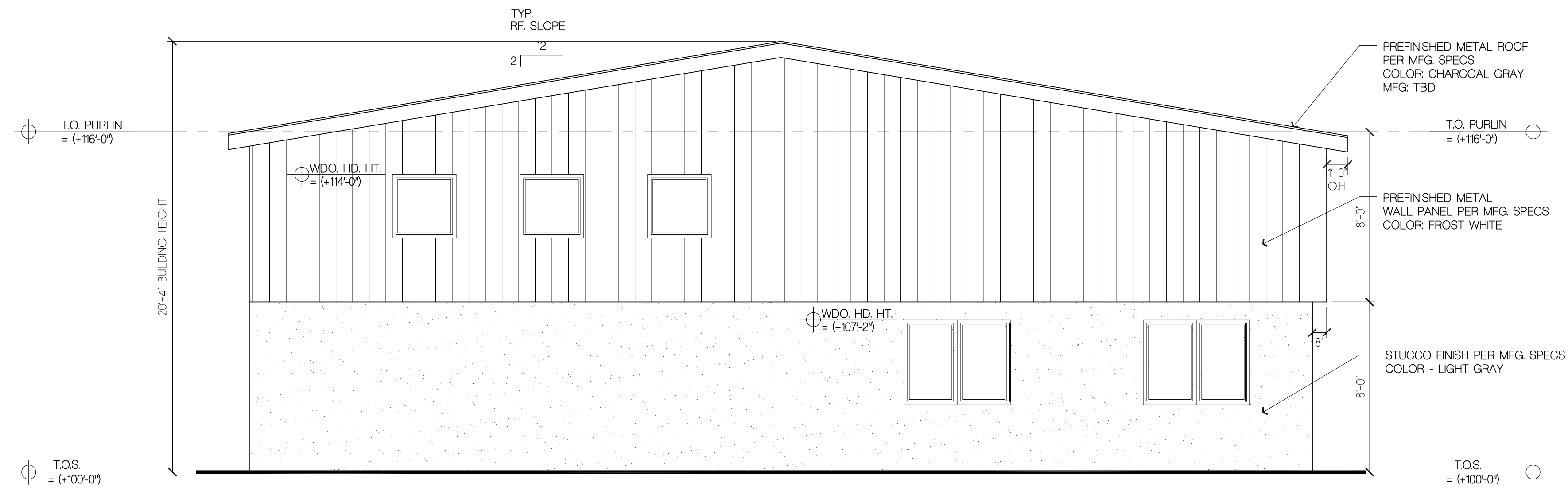


**BUCHER**  
**DESIGN STUDIO**  
 architecture • planning

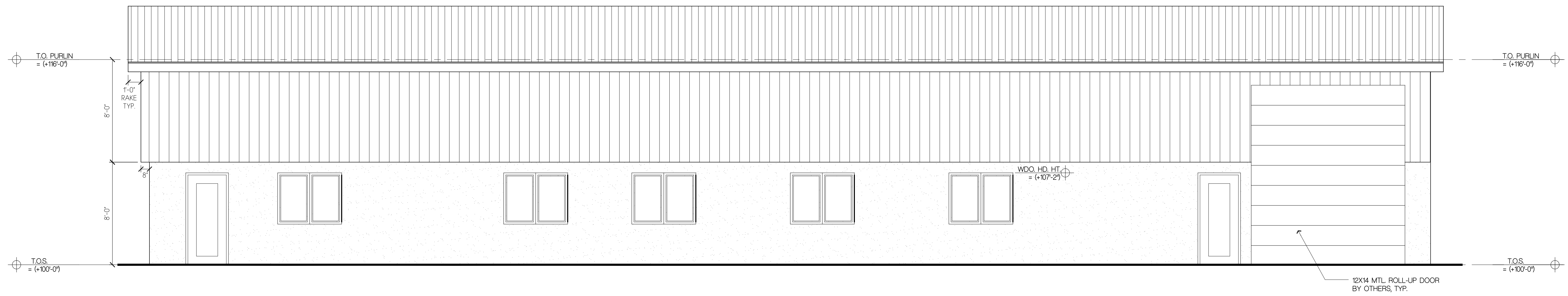
300 General Palmer Drive  
 Palmer Lake, CO 80133  
 (719) 484-0480  
 (719) 352-3641 fax  
 Brian K. Bucher, AIA  
 Architect  
 CO license no. C-4889  
 CA license no. C 23506

**PROPOSED**  
**WAREHOUSE /**  
**OFFICE FOR**

**COVERTEC**  
**INC.**



**SOUTH ELEVATION**  
 SCALE: 1/4"=1'-0"



**EAST ELEVATION**  
 SCALE: 1/4"=1'-0"

7358 & 7386 COLE VIEW  
 COLORADO SPRINGS, CO

Sheet Title:  
**EXTERIOR**  
**ELEVATIONS**

Drawing Status:  
**SITE**  
**DEVELOPMENT**  
 NOT FOR CONSTRUCTION

Revisions:

No.	Description	By	Date
1			

All ideas, designs, arrangements and plans indicated or represented by this drawing are owned by, and the property of BUCHER DESIGN STUDIO and were created, booked and developed for use on, and in conjunction with, the specified project. None of such ideas, designs, arrangements or plans shall be used by, or disclosed to any person, firm or corporation for any purpose whatsoever without the written permission of BUCHER DESIGN STUDIO.

Date:

08/24/17

Drawn by:

Checked by:

Scale:

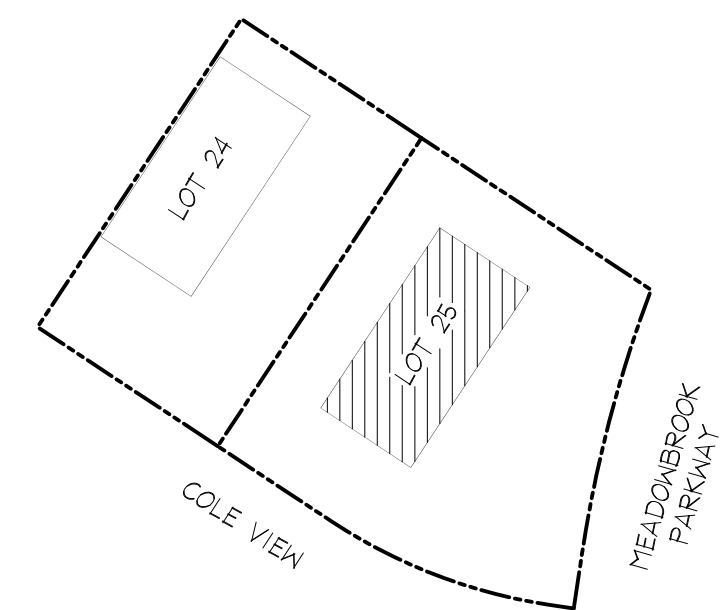
AS NOTED

Job No.:

Sheet No.:

14

Of 15



**SITE INDEX**



**BUCHER**  
 DESIGN STUDIO  
 architecture • planning

300 General Palmer Drive  
 Palmer Lake, CO 80133  
 (719) 484-0480  
 (719) 352-3641 fax  
 Brian K. Bucher, AIA  
 Architect  
 CO license no. C-4889  
 CA license no. C23506

PROPOSED  
 WAREHOUSE /  
 OFFICE FOR

COVERTEC  
 INC.

7358 & 7386 COLE VIEW  
 COLORADO SPRINGS, CO

Sheet Title:  
 EXTERIOR  
 ELEVATIONS

Drawing Status:  
 SITE  
 DEVELOPMENT  
 NOT FOR CONSTRUCTION

Revisions:

No.	Description	By	Date
1	COUNTY COMMENTS		09/21/17

No.	Description	By	Date
1	COUNTY COMMENTS		09/21/17

All ideas, designs, arrangements and plans indicated or represented by this drawing are owned by, and the property of BUCHER DESIGN STUDIO and were created, issued and developed for use on, and in conjunction with, the specified project. None of such ideas, designs, arrangements or plans shall be used by, or disclosed to any person, firm or corporation for any purpose whatsoever without the written permission of BUCHER DESIGN STUDIO.

Date: 08/24/17

Drawn by:

Checked by:

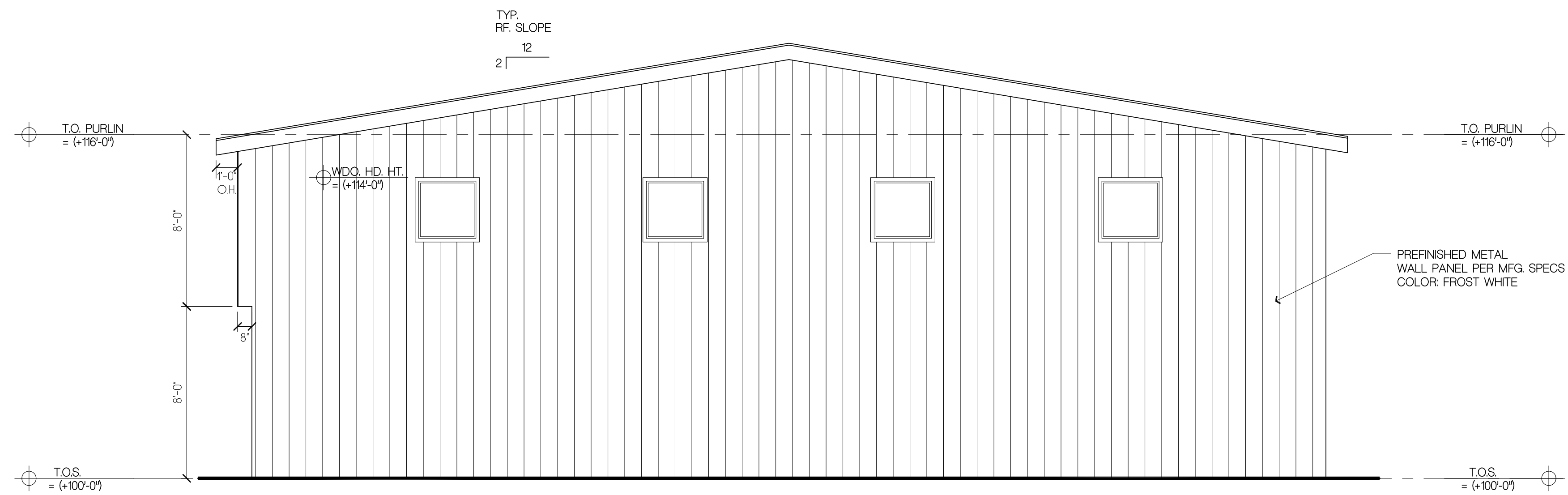
Scale: AS NOTED

Job No.:

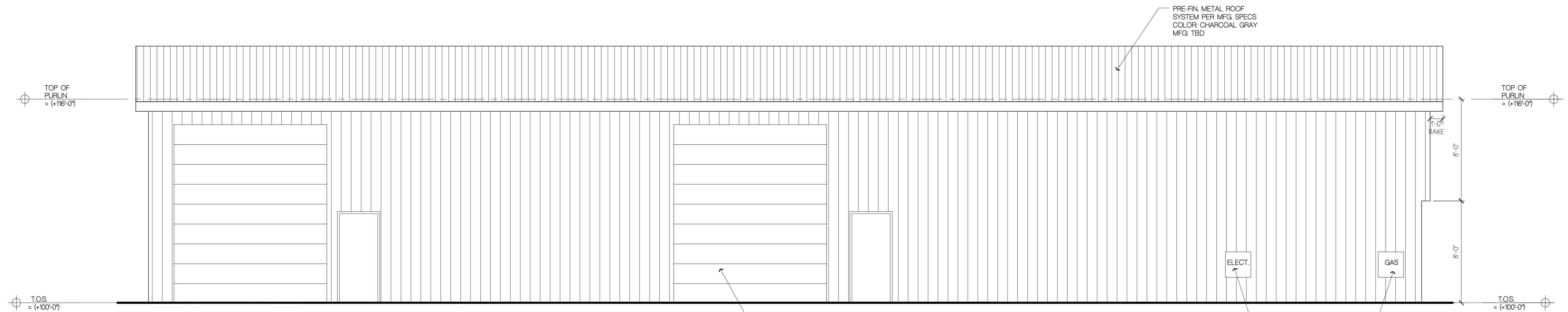
Sheet No.:

15

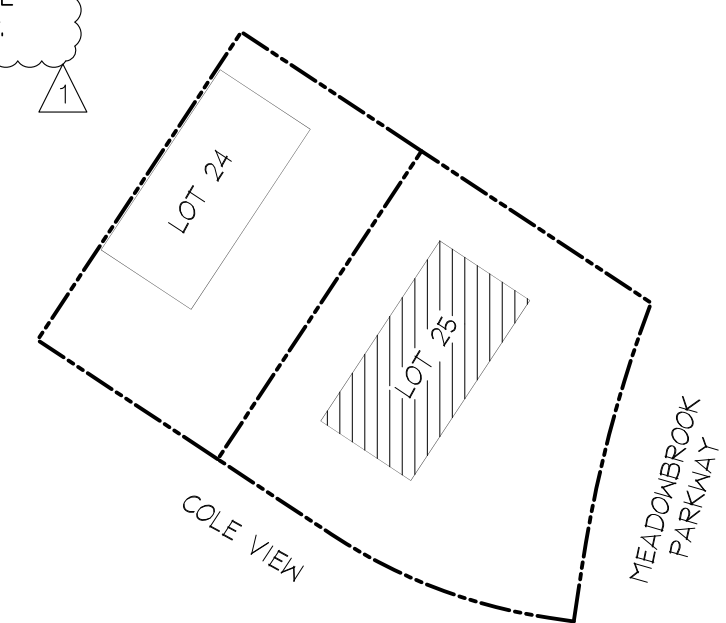
Of 15



**NORTH ELEVATION**  
 SCALE: 1/4"=1'-0"



**WEST ELEVATION**  
 SCALE: 1/4"=1'-0"



**SITE INDEX**