

PRELIMINARY PLAN STERLING RANCH EAST FIL. NO. 5

A PARCEL OF LAND BEING A PORTION OF THE SOUTHEAST QUARTER OF SECTION 33 AND SOUTHWEST QUARTER OF SECTION
34, TOWNSHIP 12 SOUTH, RANGE 65 WEST OF THE SIXTH PRINCIPAL MERIDIAN, EL PASO COUNTY, COLORADO



ALL AMERICAN
 LANDSCAPE ARCHITECTURE & IRRIGATION DESIGN
 RESIDENTIAL & COMMERCIAL LANDSCAPE INSTALLATION
 1925 AEROPOLAZA DRIVE
 COLORADO SPRINGS, CO 80916
 719-537-6313

DATE	REVISION DESCRIPTION

FOR CONSTRUCTION
 NOT FOR CONSTRUCTION



STERLING RANCH EAST
 FILING # 5
 STERLING RANCH ROAD & LAKE TAHOE DRIVE

PLANT AND TREE WARRANTY NOTE

ALL STOCK IS WARRANTED TO BE TRUE TO NAME. IF ANY STOCK PROVES TO BE OTHERWISE, SELLER WILL NOT BE LIABLE FOR ANY AMOUNT GREATER THAN ORIGINAL PURCHASE PRICE. THIS WARRANTY IS MADE EXPRESSLY IN LIEU OF ANY AND ALL OTHER WARRANTIES, EXPRESSED OR FIT FOR ANY PARTICULAR PURPOSE EXCEPT EXPRESSLY PROVIDED FOR. LIABILITY OF SELLER IS LIMITED TO REPLACEMENT OF ANY GOODS WHICH DO NOT CONFIRM TO WARRANTIES.

WINTER WATERING IS TO BE DONE AFTER MOISTURE CHECKS HAVE BEEN COMPLETED OF ALL PLANTS AND TREES. WARRANTY DOES NOT COVER PLANTS AND TREES DUE TO LACK OF WATER.

WARRANTY IS GOOD FOR ONE GROWING SEASON (APPROXIMATELY SIX MONTHS). PLANTS PURCHASED AFTER JULY 1ST ARE WARRANTED UNTIL MAY 1ST. PLANTS PURCHASED JANUARY 1ST THROUGH JULY 2ND ARE WARRANTED UNTIL NOVEMBER 30TH. SOME PLANTS CARRY NO WARRANTY. (TURF INCLUDED) SUCH AS ANNUALS, PERENNIALS, ROSES, ARBOVITAE, AND A FEW OTHER VARIETIES. INSTALLATION IS NOT COVERED UNDER WARRANTY.

ALL NON-IRRIGATED SEED CARRIES NO WARRANTY.

UTILITY NOTE

CALL 1-800-922-1987 FOR UTILITY LOCATIONS TO VERIFY LOCATION AND DEPTH OF ALL UNDERGROUND UTILITIES PRIOR TO START OF WORK.

KEEP TREES 10' FROM GAS MAINS & 15' FROM SEWER AND WATER MAIN LINES. KEEP TREES 6' MINIMUM DISTANCE FROM ANY OTHER UTILITIES. RESOLVE ANY TREE / UTILITY CONFLICTS SHOWN ON PLANS IN THE FIELD. CONTACT LANDSCAPE ARCHITECT FOR RECOMMENDATIONS IF NEEDED.

PROVIDE CLEARANCE OF ALL PLANT MATERIALS AT ELECTRIC VAULTS AND TRANSFORMERS (REFER TO COLORADO SPRINGS UTILITIES CONSTRUCTION STANDARD DRAWING 18-302 FOR SPECIFIC CLEARANCE REQUIREMENTS).

KEEP ALL SHRUBS 3' CLEAR OF ALL FIRE HYDRANTS AT MATURE SIZE.

LANDSCAPE IRRIGATION NOTE

LANDSCAPE TO BE IRRIGATED WITH A PROGRAMMABLE IRRIGATION CONTROLLER. TREES, SHRUBS, ORNAMENTAL GRASSES, AND PERENNIALS TO BE DRIP IRRIGATED WHEN LOCATED IN ROCK OR WOOD MULCH AREAS. TURF OR IRRIGATED SEED AREAS TO BE SPRAY IRRIGATED WITH POP UP SPRAY OR ROTOR HEADS.

SITE CONDITIONS NOTE

THE LANDSCAPE IS SUBJECT TO CHANGE BASED ON SITE GRADING, DRAINAGE, CONFIGURATION, AND SIZE. ANY ADJUSTMENTS WILL BE MADE DURING LANDSCAPE CONSTRUCTION. PLANT MATERIAL SYMBOLS ARE SHOWN AT MATURE WIDTH.

LANDSCAPE INSTALLATION NOTES

- EDGING FOR TURF, PLANTING BEDS, ROCK, OR MULCH AREAS TO BE ROLL TOP STEEL EDGING WITH PINS OR APPROVED EQUAL. EDGING TO BE EXPOSED 1/2" +/- ABOVE FINISHED GRADES. INSTALL PER MANUFACTURE RECOMMENDATIONS.
- EXISTING SOIL IN ALL PLANTING BED AREAS TO BE AMENDED WITH THE FOLLOWING: 4 CUBIC YARDS OF ORGANIC SOIL AMENDMENT PER 1,000 SF TILLED INTO TOP 6" OF SOIL.
- SOD AREAS TO BE AMENDED WITH: 4 CUBIC YARDS OF ORGANIC SOIL AMENDMENT PER 1,000 SF TILLED INTO THE TOP 6" OF SOIL.

LANDSCAPE REQUIREMENTS

LANDSCAPE SETBACKS (LS)

Street Name / Boundary	Street Classification	Width (ft.) Req. / Prov.	Linear Footage	Tree Req. / Ft.	Tree Req. /Prov.
Sterling Ranch Road	Minor Arterial	20'/20'	1,220'	1/25	48.8 / 49
North Road (Name TBD)	Non Arterial	10'/10'	743'	1/30	24.7 / 25
Shrub Substitutions Req. / Prov.	Ornamental grass Req. / Prov.	Setback Abbr.	Percent Ground Plane Cov. Req./Prov.		
0/0	0/0	LS	75%/75%		
0/0	0/0	LS	75%/75%		

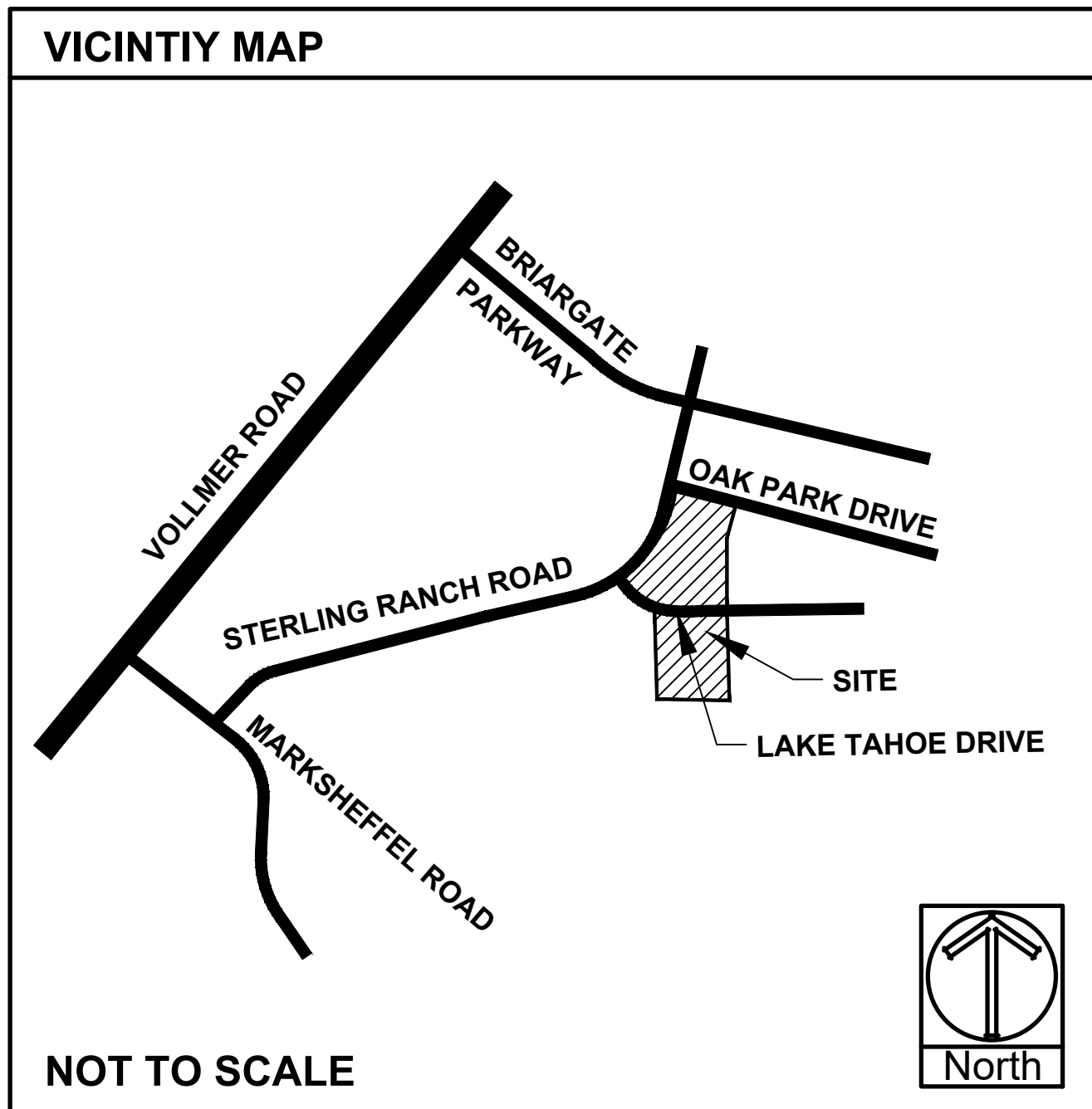
IRRIGATION SYSTEM DESCRIPTION

The irrigation system to be an underground system with a spray or rotor system for turf or seeded areas. Shrub areas to be surface drip irrigated to irrigate all plant material. Irrigation system to be drainable for winter freeze protection. Irrigation to run off of a programmable irrigation controller.

FINAL LANDSCAPE SUBMITTAL NOTE

When Final Landscape plan is submitted an irrigation plan will be submitted, with all applicable support materials (at the time of building permit application). Review and approval of these plans to occur thirty (30) days prior to building permit issuance or prior to certificate of occupancy issuance.

If an irrigation plan is not submitted with the final Landscape plan submittal, an irrigation plan must be submitted for review 90 days after a building permit is issued. The irrigation plan must be approved prior to any irrigation equipment installation or issuance of certificate of occupancy.



JOB NUMBER: 2711-0723
 DATE: 7/27/2023
 DRAWN BY: MB
 DRAWING DESCRIPTION: TITLE SHEET
 SHEET #: SHEET 9 OF 21
 © 2013 BY ALL AMERICAN • ALL RIGHTS RESERVED



PRELIMINARY PLAN STERLING RANCH EAST FIL. NO. 5

A PARCEL OF LAND BEING A PORTION OF THE SOUTHEAST QUARTER OF SECTION 33 AND SOUTHWEST QUARTER OF SECTION 34, TOWNSHIP 12 SOUTH, RANGE 65 WEST OF THE SIXTH PRINCIPAL MERIDIAN, EL PASO COUNTY, COLORADO

← this is final plan

Code requires internal public roadways to be landscaped. Provide a detail for internal roads. State if District or lot owners will install land maintain.

PLANT AND TREE WARRANTY NOTE

ALL STOCK IS WARRANTED TO BE TRUE TO NAME. IF ANY STOCK PROVES TO BE OTHERWISE, SELLER WILL NOT BE LIABLE FOR ANY AMOUNT GREATER THAN ORIGINAL PURCHASE PRICE. THIS WARRANTY IS MADE EXPRESSLY IN LIEU OF ANY AND ALL OTHER WARRANTIES, EXPRESSED OR FOR ANY PARTICULAR PURPOSE EXCEPT EXPRESSLY PROVIDED FOR. LIABILITY OF SELLER IS LIMITED TO REPLACEMENT OF ANY GOODS WHICH DO NOT CONFIRM TO WARRANTIES.

WINTER WATERING IS TO BE DONE AFTER MOISTURE CHECKS HAVE BEEN COMPLETED OF ALL PLANTS AND TREES. WARRANTY DOES NOT COVER PLANTS AND TREES DUE TO LACK OF WATER.

WARRANTY IS GOOD FOR ONE GROWING SEASON (APPROXIMATELY SIX MONTHS). PLANTS PURCHASED AFTER JULY 1ST ARE WARRANTED UNTIL MAY 1ST. PLANTS PURCHASED JANUARY 1ST THROUGH JULY 2ND ARE WARRANTED UNTIL NOVEMBER 30TH. SOME PLANTS CARRY NO WARRANTY. (TURF INCLUDED) SUCH AS ANNUALS, PERENNIALS, ROSES, ARBOVITAE, AND A FEW OTHER VARIETIES. INSTALLATION IS NOT COVERED UNDER WARRANTY.

ALL NON-IRRIGATED SEED CARRIES NO WARRANTY.

UTILITY NOTE

CALL 1-800-822-1987 FOR UTILITY LOCATIONS TO VERIFY LOCATION AND DEPTH OF ALL UNDERGROUND UTILITIES PRIOR TO START OF WORK.

KEEP TREES 10' FROM GAS MAINS & 15' FROM SEWER AND WATER MAIN LINES. KEEP TREES 6' MINIMUM DISTANCE FROM ANY OTHER UTILITIES. RESOLVE ANY TREE / UTILITY CONFLICTS SHOWN ON PLANS IN THE FIELD. CONTACT LANDSCAPE ARCHITECT FOR RECOMMENDATIONS IF NEEDED.

PROVIDE CLEARANCE OF ALL PLANT MATERIALS AT ELECTRIC VAULTS AND TRANSFORMERS (REFER TO COLORADO SPRINGS UTILITIES CONSTRUCTION STANDARD DRAWING 18-302 FOR SPECIFIC CLEARANCE REQUIREMENTS).

KEEP ALL SHRUBS 3' CLEAR OF ALL FIRE HYDRANTS AT MATURE SIZE.

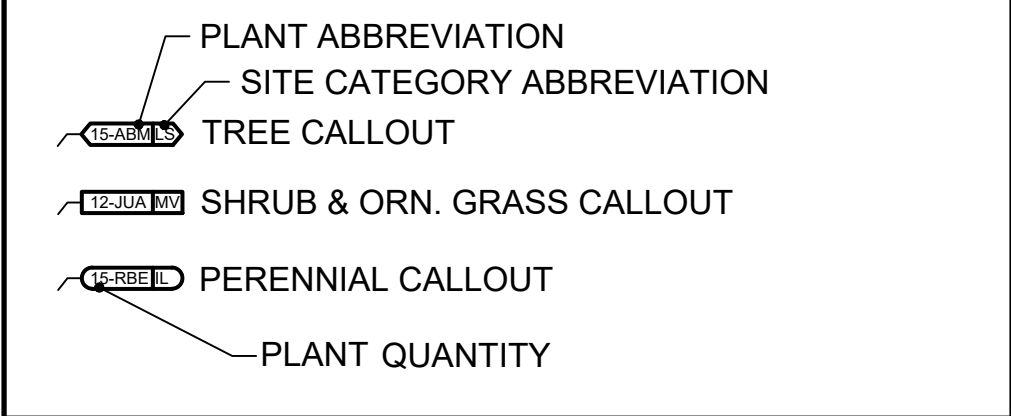
SITE CONDITIONS NOTE

THE LANDSCAPE IS SUBJECT TO CHANGE BASED ON SITE GRADING, DRAINAGE, CONFIGURATION, AND SIZE. ANY ADJUSTMENTS WILL BE MADE DURING LANDSCAPE CONSTRUCTION. PLANT MATERIAL SYMBOLS ARE SHOWN AT MATURE WIDTH.

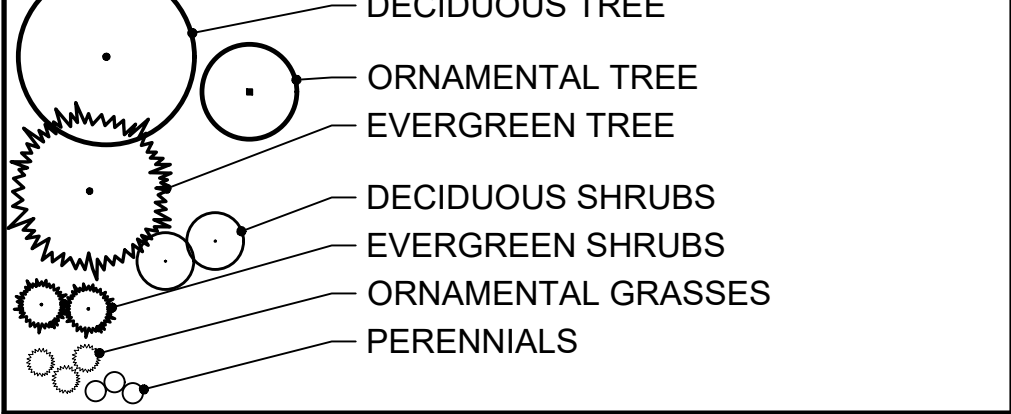
LANDSCAPE INSTALLATION NOTES

- EDGING FOR TURF, PLANTING BEDS, ROCK, OR MULCH AREAS TO BE ROLL TOP STEEL EDGING WITH PINS OR APPROVED EQUAL. EDGING TO BE EXPOSED 1/2" +/- ABOVE FINISHED GRADES. INSTALL PER MANUFACTURE RECOMMENDATIONS.
- EXISTING SOIL IN ALL PLANTING BED AREAS TO BE AMENDED WITH THE FOLLOWING: 4 CUBIC YARDS OF ORGANIC SOIL AMENDMENT PER 1,000 SF TILLED INTO TOP 6" OF SOIL.
- SOD AREAS TO BE AMENDED WITH: 4 CUBIC YARDS OF ORGANIC SOIL AMENDMENT PER 1,000 SF TILLED INTO THE TOP 6" OF SOIL.

CALLOUT KEY



PLANT SYMBOL KEY



LANDSCAPE IRRIGATION NOTE

LANDSCAPE TO BE IRRIGATED WITH A PROGRAMMABLE IRRIGATION CONTROLLER. TREES, SHRUBS, ORNAMENTAL GRASSES AND PERENNIALS TO BE DRIP IRRIGATED WHEN LOCATED IN ROCK OR WOOD MULCH AREAS. TURF OR IRRIGATED SEED AREAS TO BE SPRAY IRRIGATED WITH POP UP SPRAY OR ROTOR HEADS.

PLANTING LEGEND

ABBR.	QTY.	BOTANICAL NAME	COMMON NAME	SIZE	NOTES
DECIDUOUS TREES					
ABM	4	Acer x freemanii 'Autumn Blaze'	Maple, Autumn Blaze	1-1/2"	Z=4, 6.5K, S, SIG
ANM	13	Acer platanoides	Maple, Norway	1-1/2"	Z=4, 6.5K, S, SIG
APR	31	Acer platanoides 'Royal Red'	Maple, Royal Red	1-1/2"	Z=4, 6.5K, S, SIG
COH	3	Celtis occidentalis	Hackberry	1-1/2"	R, DE, Z=3, 7K, A, D, SIG
GKC	6	Gymnocladus dioica	Kentucky Coffee Tree	1-1/2"	Z=4, 7.5K, A, S, SIG
MSS	11	Malus 'Spring Snow'	Crabapple, Spring Snow	1-1/2"	F, Z=4, 8.5K, S, SIG
PCR	4	Prunus virginiana 'Schubert'	Cherry, Canada Red	1-1/2"	R, DE, F, Z=2, 9.5K, A, S, SIG
TAL	8	Tilia americana	Linden, American	1-1/2"	Z=4, 8K, S, SIG
EVERGREEN TREES					
JRM	10	Juniperus scopulorum	Juniper, Rocky Mountain	6'	Z=3, 10K, X, A, D, SIG
PIB	4	Picea pungens 'Baker'	Spruce, Baker	6'	R, DE, Z=2, 8K, S, SIG
PIP	1	Picea pungens	Spruce, Colorado Blue	6'	R, DE, Z=3, 10K, S, SIG
PON	11	Pinus ponderosa	Pine, Ponderosa	6'	R, DE, Z=3, 9.5K, D, SIG
DECIDUOUS SHRUBS					
ARB	13	Aronia melanocarpa	Chokeberry, Black	5 Gal	R, DE, Z=2, 8.5K, A, SIG
BRG	36	Berberis thunbergii 'Rose Glow'	Barberry, Rosy Glow	5 Gal	R, DE, Z=4, 7K, A, SIG
COP	34	Contoneaster acutifolia	Contoneaster, peking	5 Gal	R, DE, Z=4, 10K, S, SIG
POA	76	Potentilla fruticosa 'Abbotswood'	Potentilla, Abbotswood	5 Gal	R, DE, F, Z=2, 10K, S, SIG
PRS	29	Potentilla fruticosa 'Red sunset'	Potentilla, 'Red Sunset'	5 Gal	R, DE, Z=3, S, SIG
RGL	6	Rhus aromatica 'Gro-low'	Sumac, Gro-Low	5 Gal	DE, Z=3, 8.5K, A, D, SIG
SBC	51	Spiraea x bumalda 'Goldflame'	Spiraea, Goldflame	5 Gal	R, DE, Z=3, 7.5K, A, S, SIG
SCW	8	Syringa vulgaris 'Alba'	Lilac, Common White	5 Gal	R, DE, F, Z=2, 10K, A, SIG
VEC	9	Viburnum opulus 'Compactum'	Viburnum, Compact European Cranberry	5 Gal	R, DE, Z=3, 8K, A, SIG
VOS	20	Viburnum opulus 'Roseum'	Viburnum Snowball	5 Gal	R, DE, 7.5K, A, SIG
EVERGREEN SHRUBS					
JBK	77	Juniperus Sabina	Juniper, Buffalo	5 Gal	R, DE, Z=3.8.5K, A, SIG
PGS	20	Picea pungens 'Glauca Globosa'	Spruce, Globe Blue	5 Gal	Z=2, 10K, S, SIG
PERENNIALS					
HSD	118	Hemerocallis 'Stella'd oro'	Daylily, Stella d'oro	1 Gal	R, DE, Z=3, 10K, D, SIG

GROUNDCOVER LEGEND

SYMBOL	DESCRIPTION	QUANTITY
---	STEEL EDGING	565 LF
[Pattern]	1-1/2" CIMARRON GRANITE ROCK 3" IN DEPTH WITH WEED FABRIC	24,270 SF
[Pattern]	2-4" BLUE GREY COBBLE 3" IN DEPTH WITH WEED FABRIC	7,540 SF
[Pattern]	4-8" AND 2-4" MIX OF BLUE GREY COBBLE 3" IN DEPTH WITH WEED FABRIC	907 SF
[Pattern]	CASCADE MULCH 3" IN DEPTH WITH NO WEED FABRIC	300 SF
[Symbol]	DECORATIVE BOULDER	51 TOTAL
[Symbol]	BERM (NOT SHOWN TBD)	TBD SF
[Pattern]	IRRIGATED NATIVE SEED ALL PURPOSE LOW GROW MIX (PROVIDE EROSION CONTROL BLANKETS ON SLOPES 3:1 OR STEEPER SEE NOTES)	112,854 SF
[Pattern]	IRRIGATED NATIVE SEED ALL PURPOSE MIX (AT POND BOTTOM - PROVIDE EROSION CONTROL BLANKETS ON SLOPES 3:1 OR STEEPER SEE NOTES)	115,997 SF

ALL AMERICAN
LANDSCAPE ARCHITECTURE & IRRIGATION DESIGN
RESIDENTIAL & COMMERCIAL LANDSCAPE INSTALLATION
1925 AEROPOLAZA DRIVE
COLORADO SPRINGS, CO 80916
719-587-6313

DATE	REVISION DESCRIPTION

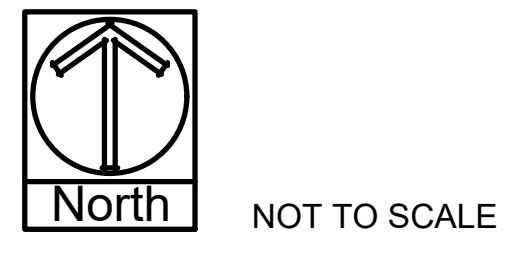
FOR CONSTRUCTION
 NOT FOR CONSTRUCTION



STERLING RANCH EAST
FILING # 5
STERLING RANCH ROAD & LAKE TAHOE DRIVE

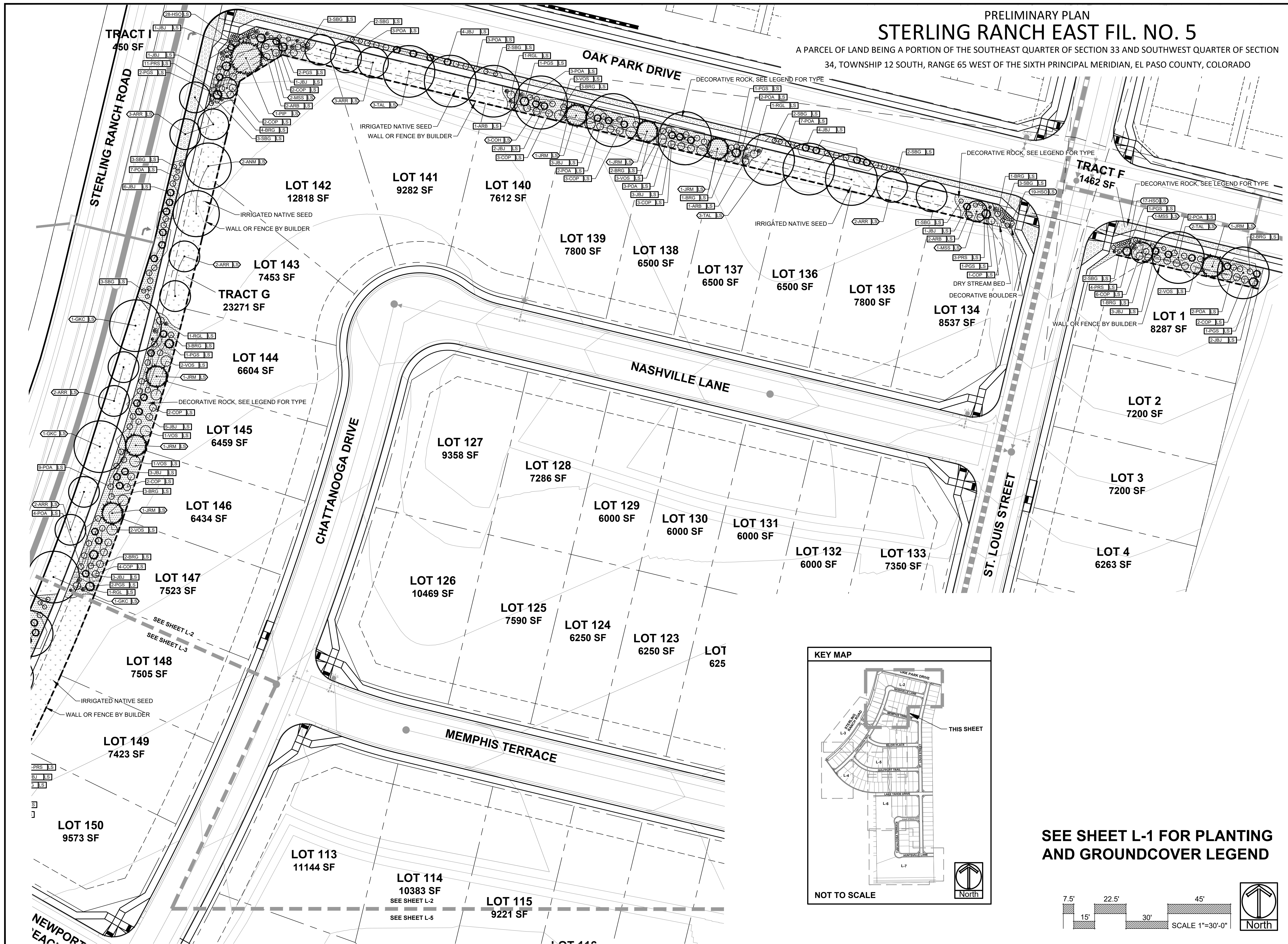
Final

JOB NUMBER
2711-0723
DATE 7/27/2023
DRAWN BY /MB
DRAWING DESCRIPTION
PRELIMINARY LANDSCAPE PLAN
SHEET #
SHEET 10 OF 21
© 2013 BY ALL AMERICAN • ALL RIGHTS RESERVED



PRELIMINARY PLAN
STERLING RANCH EAST FIL. NO. 5

A PARCEL OF LAND BEING A PORTION OF THE SOUTHEAST QUARTER OF SECTION 33 AND SOUTHWEST QUARTER OF SECTION 34, TOWNSHIP 12 SOUTH, RANGE 65 WEST OF THE SIXTH PRINCIPAL MERIDIAN, EL PASO COUNTY, COLORADO



ALL AMERICAN
LANDSCAPE ARCHITECTURE & IRRIGATION DESIGN
RESIDENTIAL & COMMERCIAL LANDSCAPE INSTALLATION
1925 AEROPOLAZA DRIVE
COLORADO SPRINGS, CO 80916
719-537-6313

DATE	REVISION DESCRIPTION

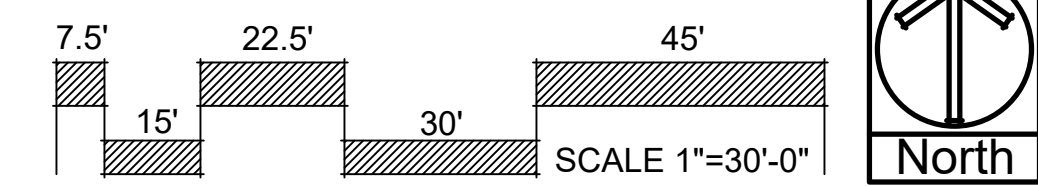
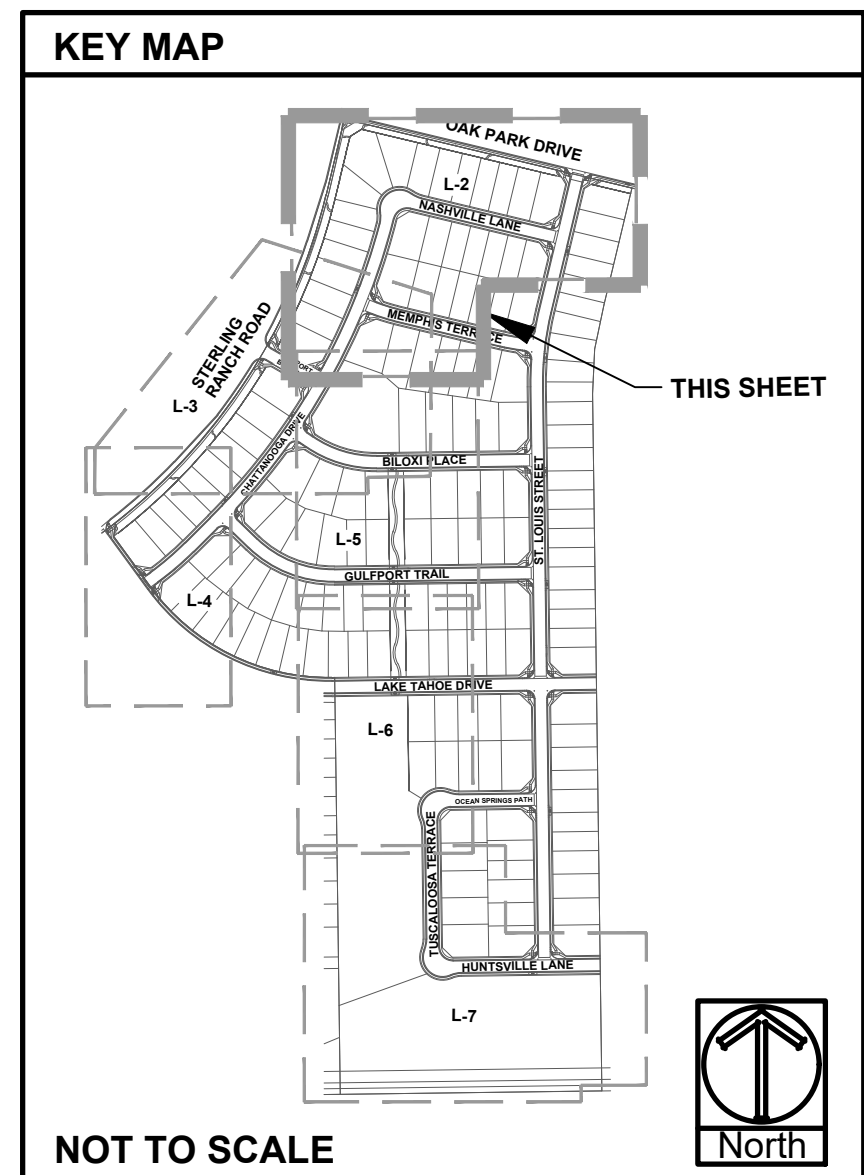
FOR CONSTRUCTION
 NOT FOR CONSTRUCTION



STERLING RANCH EAST
FILING # 5
STERLING RANCH ROAD & LAKE TAHOE DRIVE

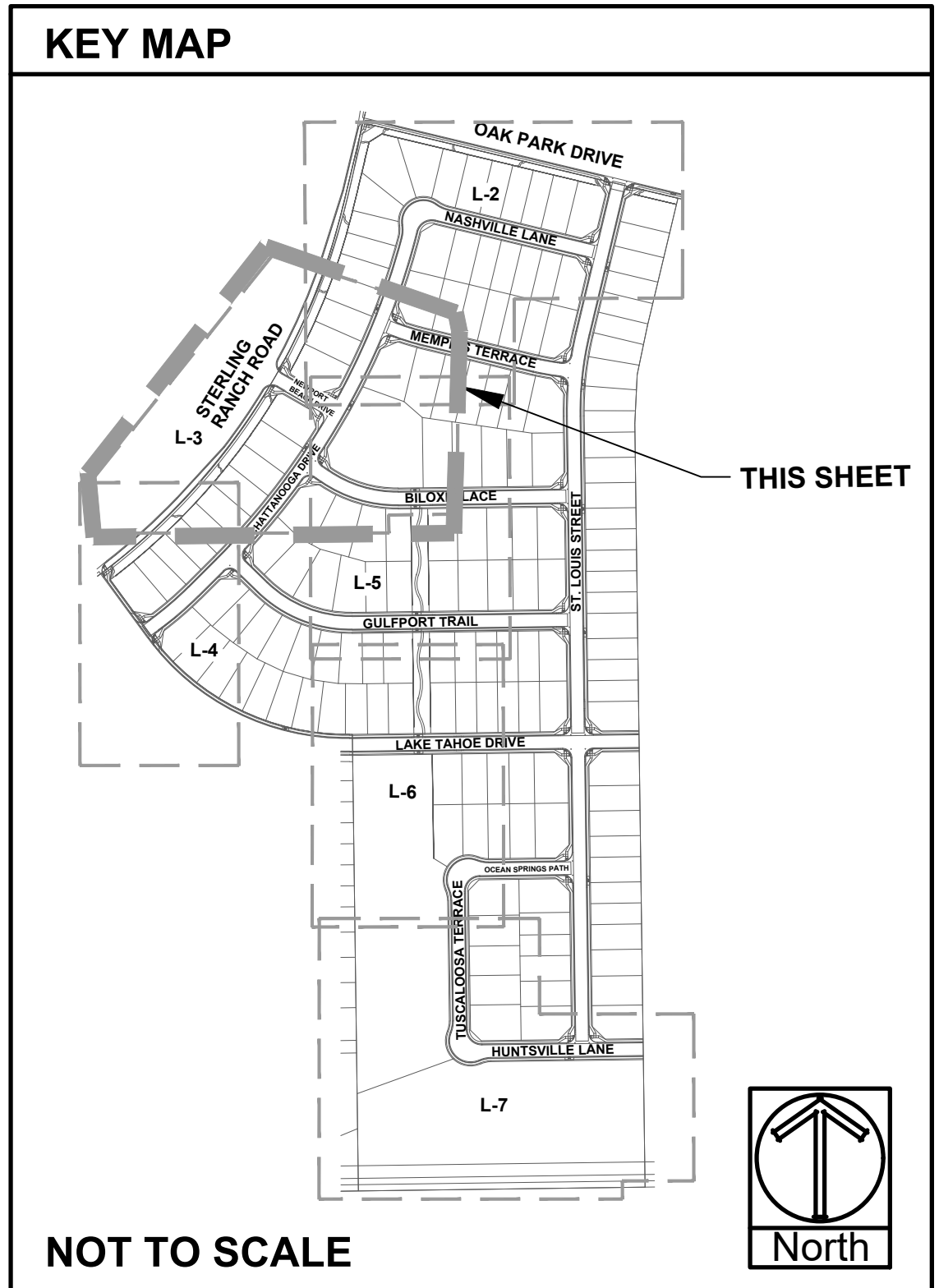
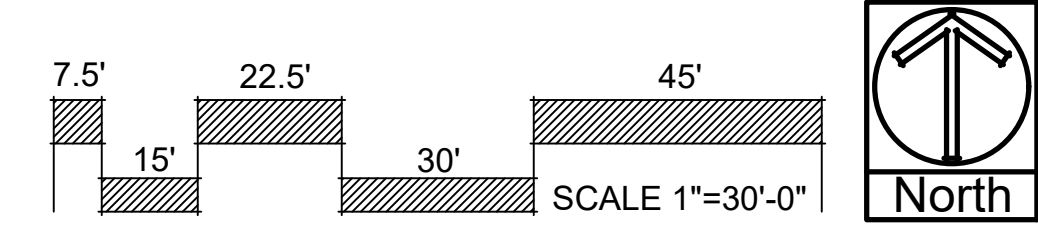
JOB NUMBER	2711-0723
DATE	7/27/2023
DRAWN BY	MB
DRAWING DESCRIPTION	PRELIMINARY LANDSCAPE PLAN
SHEET #	SHEET 11 OF 21

SEE SHEET L-1 FOR PLANTING AND GROUNDCOVER LEGEND



PRELIMINARY PLAN STERLING RANCH EAST FIL. NO. 5

A PARCEL OF LAND BEING A PORTION OF THE SOUTHEAST QUARTER OF SECTION 33 AND SOUTHWEST QUARTER OF SECTION 34, TOWNSHIP 12 SOUTH, RANGE 65 WEST OF THE SIXTH PRINCIPAL MERIDIAN, EL PASO COUNTY, COLORADO



SEE SHEET L-1 FOR PLANTING AND GROUNDCOVER LEGEND

ALL AMERICAN
LANDSCAPE ARCHITECTURE & IRRIGATION DESIGN
RESIDENTIAL & COMMERCIAL LANDSCAPE INSTALLATION
1925 AEROPOLAZA DRIVE
COLORADO SPRINGS, CO 80916
719-537-4313

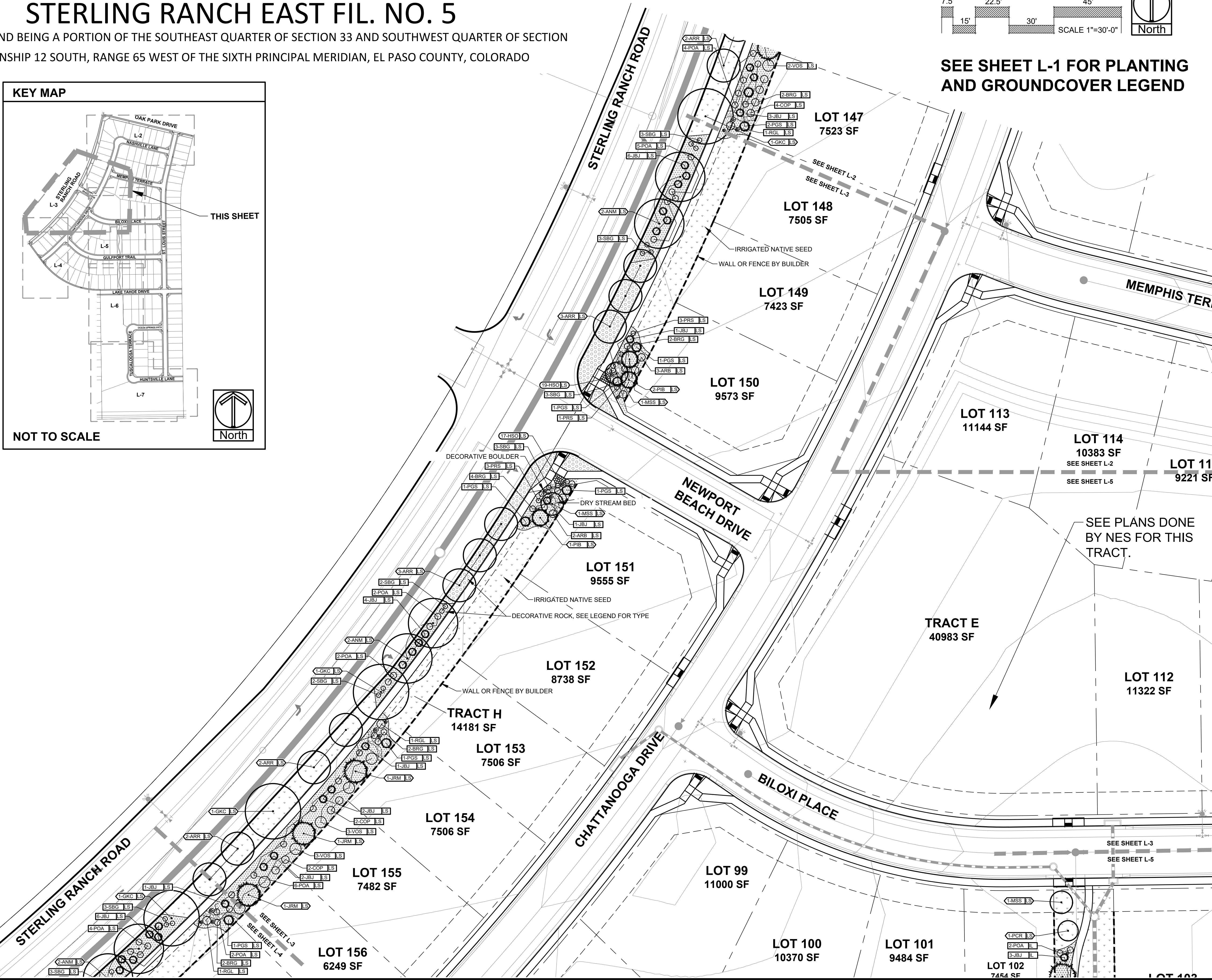
DATE	REVISION DESCRIPTION

FOR CONSTRUCTION
 NOT FOR CONSTRUCTION



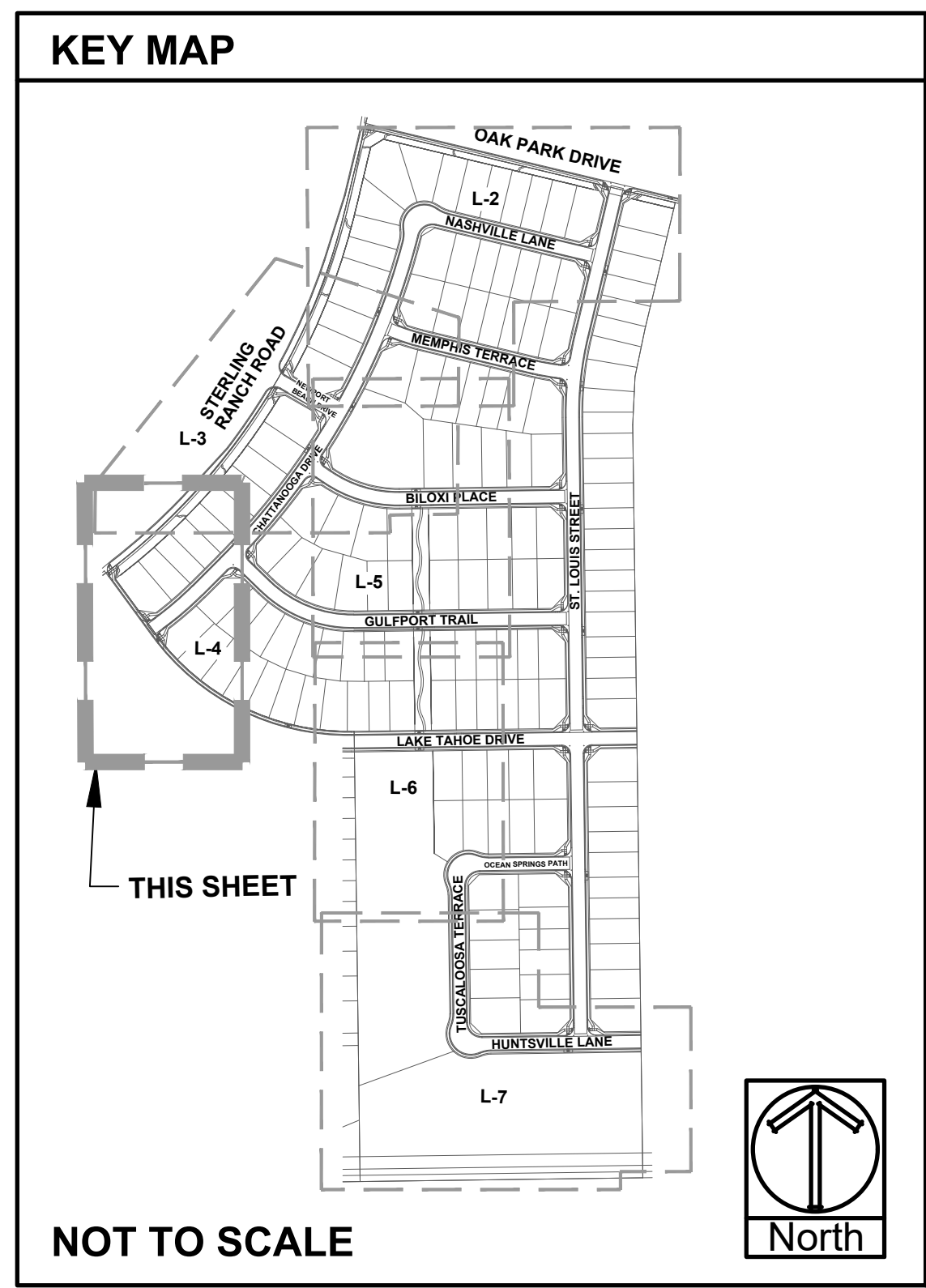
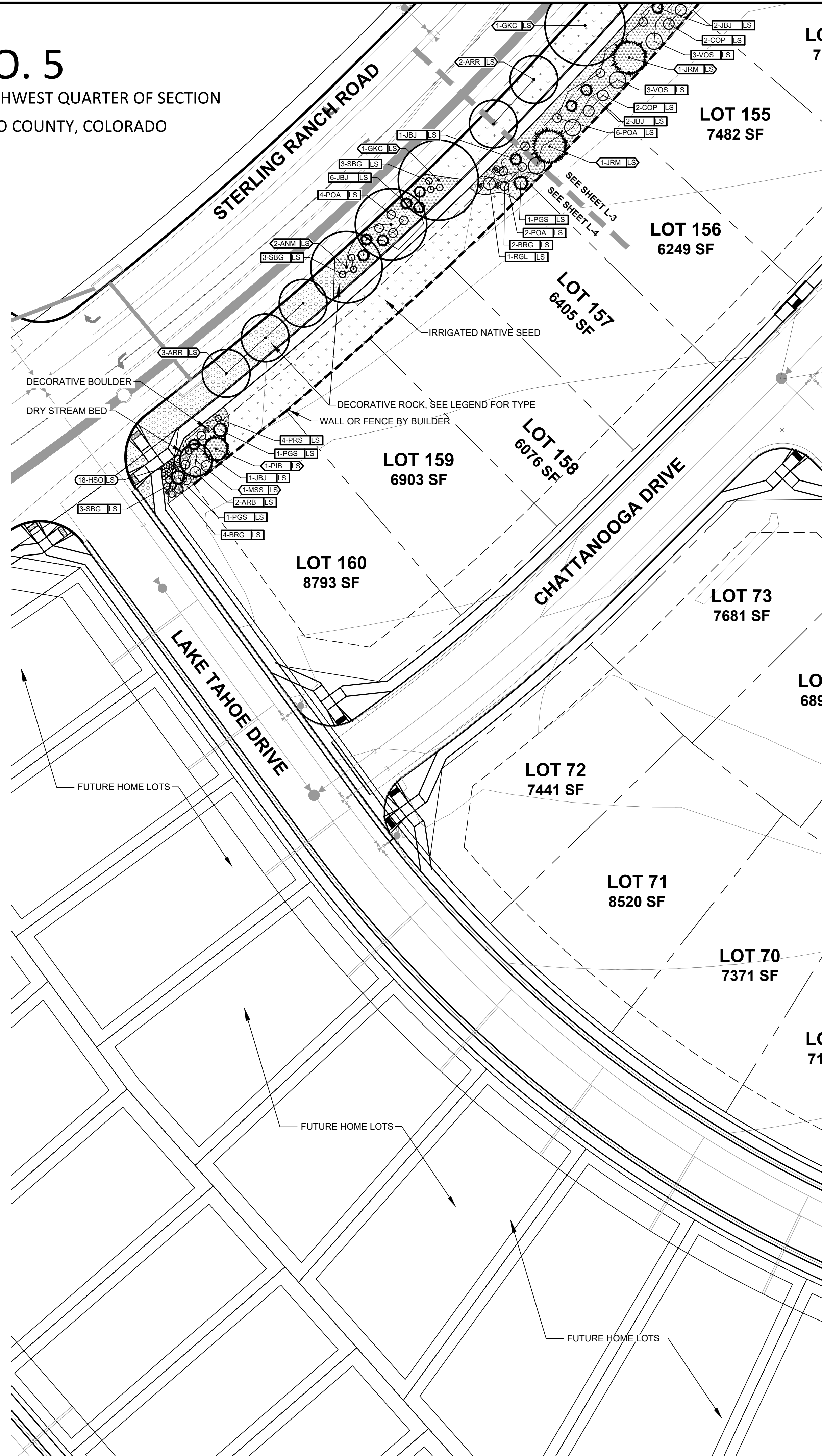
STERLING RANCH EAST
FILING # 5
STERLING RANCH ROAD & LAKE TAHOE DRIVE

JOB NUMBER	2711-0723
DATE	7/27/2023
DRAWN BY	MB
DRAWING DESCRIPTION	PRELIMINARY LANDSCAPE PLAN
SHEET #	SHEET 12 OF 21
© 2013 BY ALL AMERICAN. ALL RIGHTS RESERVED.	

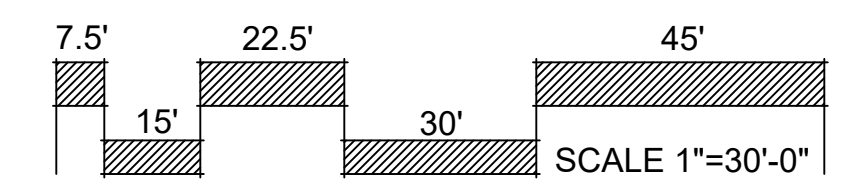


PRELIMINARY PLAN STERLING RANCH EAST FIL. NO. 5

A PARCEL OF LAND BEING A PORTION OF THE SOUTHEAST QUARTER OF SECTION 33 AND SOUTHWEST QUARTER OF SECTION 34, TOWNSHIP 12 SOUTH, RANGE 65 WEST OF THE SIXTH PRINCIPAL MERIDIAN, EL PASO COUNTY, COLORADO



SEE SHEET L-1 FOR PLANTING AND GROUNDCOVER LEGEND



ALL AMERICAN
LANDSCAPE ARCHITECTURE & IRRIGATION DESIGN
RESIDENTIAL & COMMERCIAL LANDSCAPE INSTALLATION
1925 AEROPLAZA DRIVE
COLORADO SPRINGS, CO 80916
719-537-4313

DATE	REVISION DESCRIPTION

FOR CONSTRUCTION
 NOT FOR CONSTRUCTION



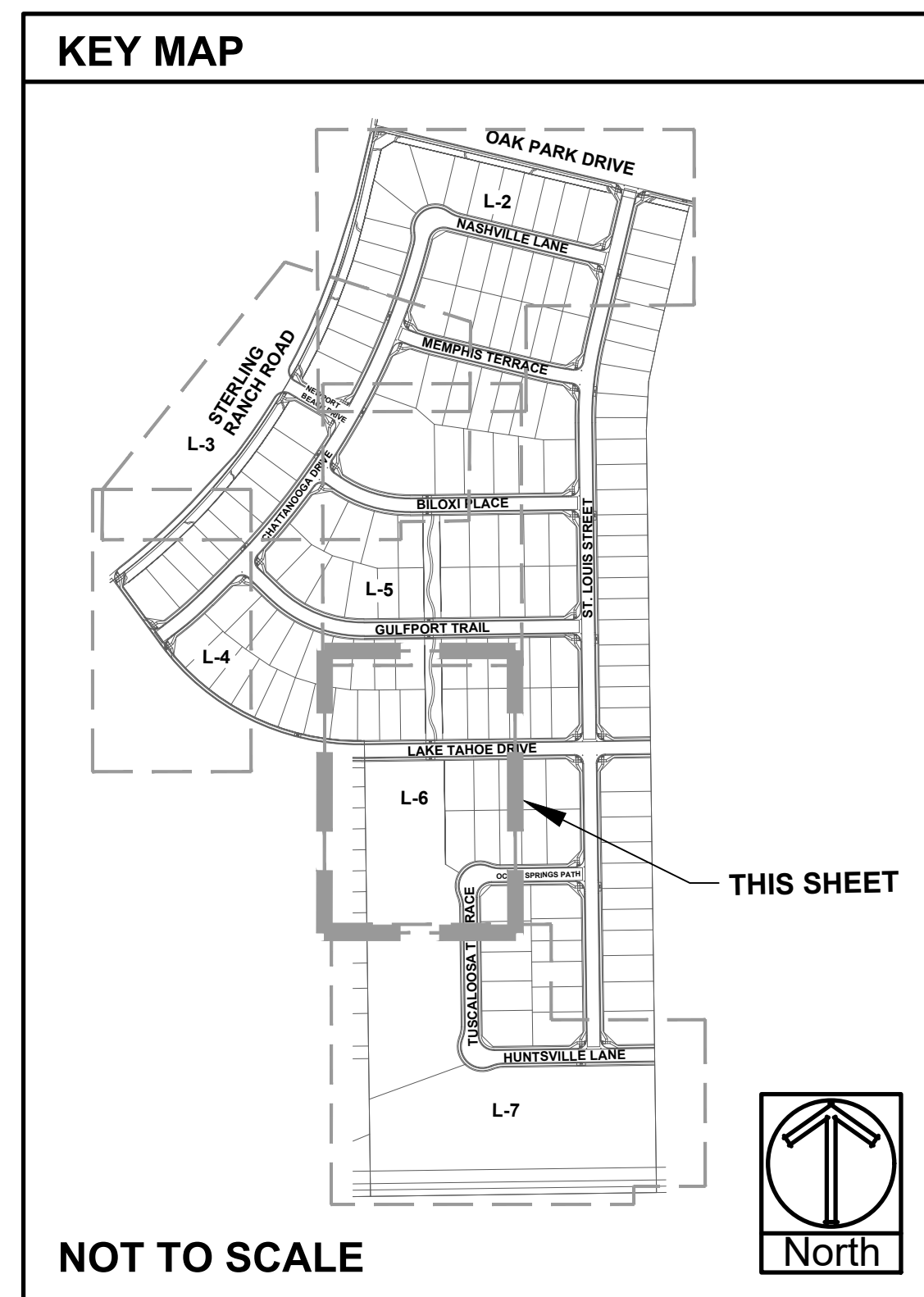
STERLING RANCH EAST
FILING # 5
STERLING RANCH ROAD & LAKE TAHOE DRIVE

JOB NUMBER 2711-0723
DATE 7/27/2023
DRAWN BY MB

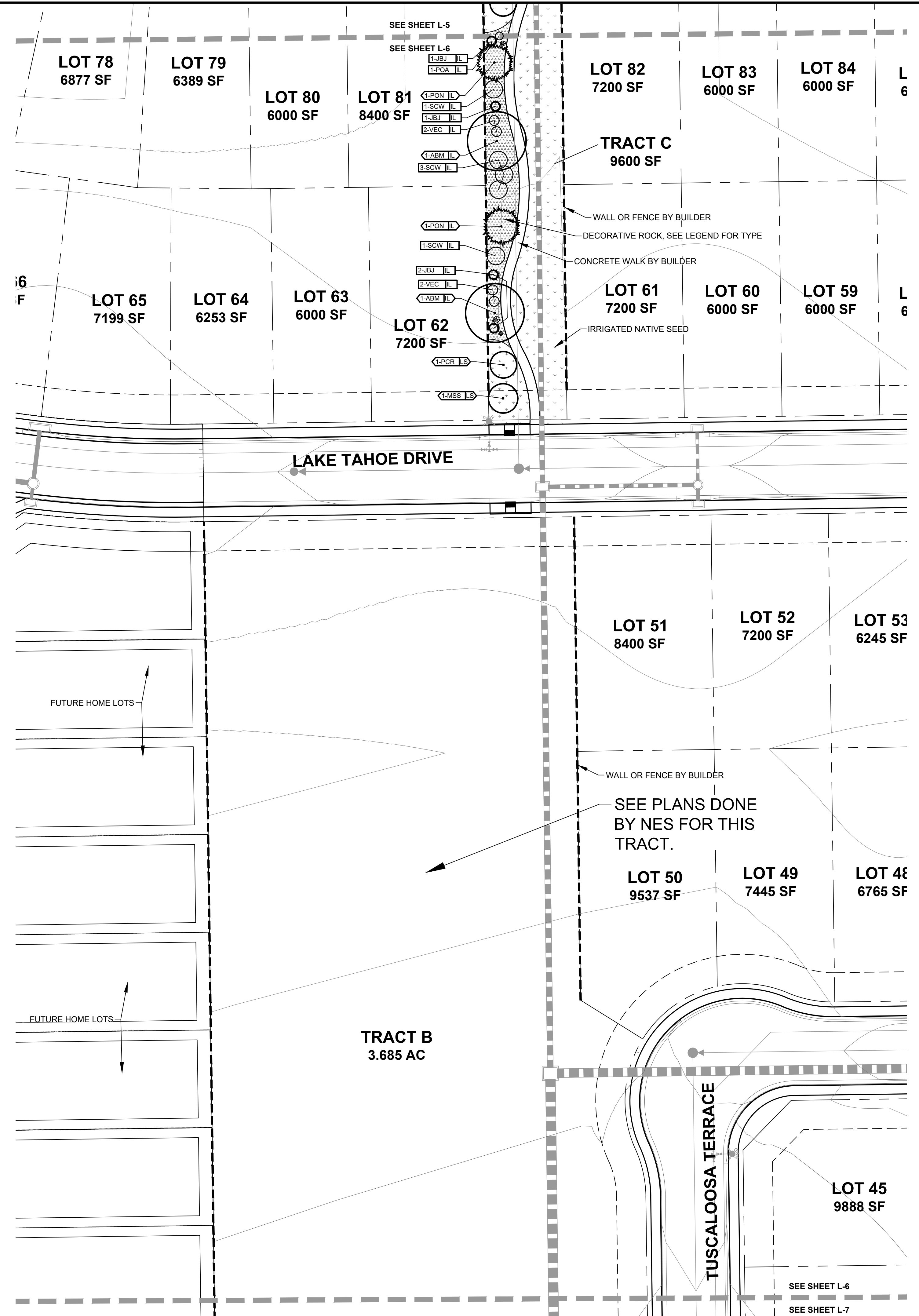
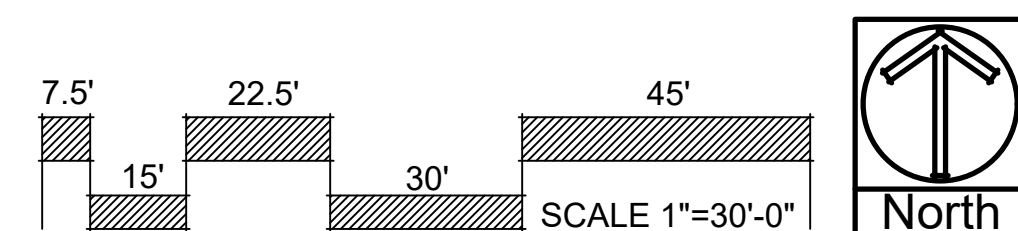
DRAWING DESCRIPTION
PRELIMINARY LANDSCAPE PLAN
SHEET # SHEET 13 OF 21
© 2013 BY ALL AMERICAN • ALL RIGHTS RESERVED

PRELIMINARY PLAN STERLING RANCH EAST FIL. NO. 5

A PARCEL OF LAND BEING A PORTION OF THE SOUTHEAST QUARTER OF SECTION 33 AND SOUTHWEST QUARTER OF SECTION 34, TOWNSHIP 12 SOUTH, RANGE 65 WEST OF THE SIXTH PRINCIPAL MERIDIAN, EL PASO COUNTY, COLORADO



SEE SHEET L-1 FOR PLANTING
AND GROUNDCOVER LEGEND



ALL AMERICAN
LANDSCAPE ARCHITECTURE & IRRIGATION DESIGN
RESIDENTIAL & COMMERCIAL LANDSCAPE INSTALLATION
1925 AEROPLAZA DRIVE
COLORADO SPRINGS, CO 80916
719-537-6313

DATE	REVISION DESCRIPTION

FOR CONSTRUCTION
 NOT FOR CONSTRUCTION

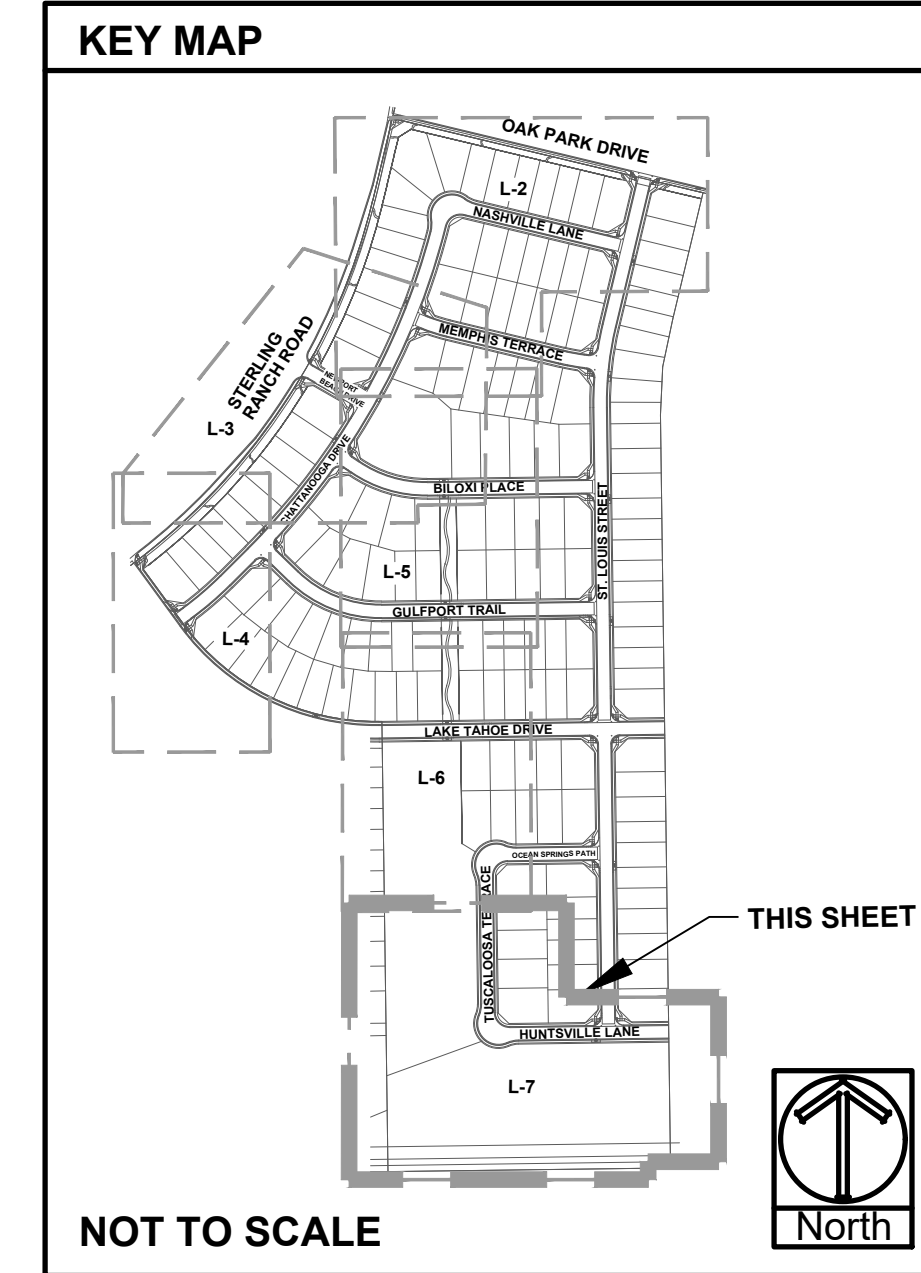


STERLING RANCH EAST
FILING # 5
STERLING RANCH ROAD & LAKE TAHOE DRIVE

JOB NUMBER	2711-0723
DATE	7/27/2023
DRAWN BY	MB
DRAWING DESCRIPTION	PRELIMINARY LANDSCAPE PLAN
SHEET #	SHEET 15 OF 21
© 2013 BY ALL AMERICAN • ALL RIGHTS RESERVED	

PRELIMINARY PLAN
STERLING RANCH EAST FIL. NO. 5

A PARCEL OF LAND BEING A PORTION OF THE SOUTHEAST QUARTER OF SECTION 33 AND SOUTHWEST QUARTER OF SECTION 34, TOWNSHIP 12 SOUTH, RANGE 65 WEST OF THE SIXTH PRINCIPAL MERIDIAN, EL PASO COUNTY, COLORADO



ALL AMERICAN
 LANDSCAPE ARCHITECTURE & IRRIGATION DESIGN
 RESIDENTIAL & COMMERCIAL LANDSCAPE INSTALLATION
 1925 AEROPLAZA DRIVE
 COLORADO SPRINGS, CO 80916
 719-537-3313

DATE	REVISION DESCRIPTION

FOR CONSTRUCTION

NOT FOR CONSTRUCTION



STERLING RANCH EAST
 FILING # 5
 STERLING RANCH ROAD & LAKE TAHOE DRIVE

JOB NUMBER
 2711-0723

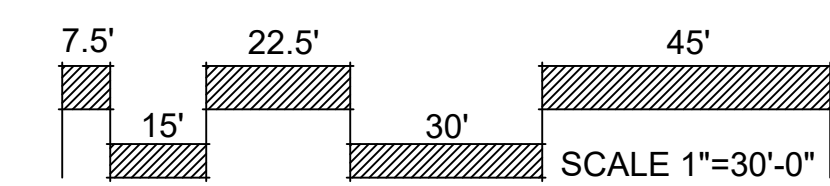
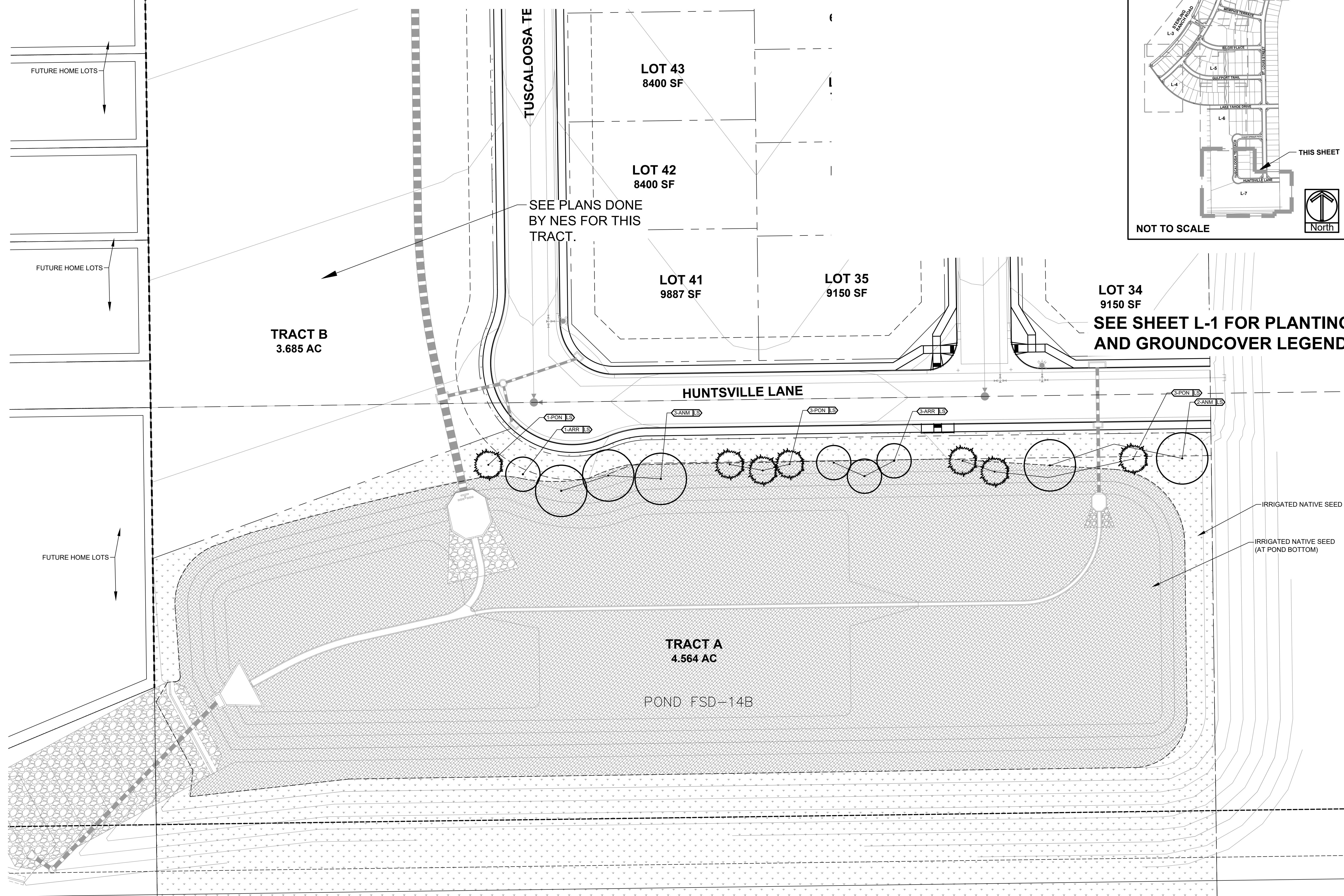
DATE
 7/27/2023

DRAWN BY
 MB

DRAWING DESCRIPTION
 PRELIMINARY
 LANDSCAPE PLAN

SHEET #
 SHEET 16 OF 21

© 2013 BY ALL AMERICAN • ALL RIGHTS RESERVED



SEE SHEET L-6
 SEE SHEET L-7

SEE SHEET L-1 FOR PLANTING
 AND GROUND COVER LEGEND

SEE PLANS DONE
 BY NES FOR THIS
 TRACT.

FUTURE HOME LOTS

FUTURE HOME LOTS

FUTURE HOME LOTS

TRACT B
 3.685 AC

TRACT A
 4.564 AC

POND FSD-14B

HUNTSVILLE LANE

TUSCALOOSA TE

LOT 43
 8400 SF

LOT 42
 8400 SF

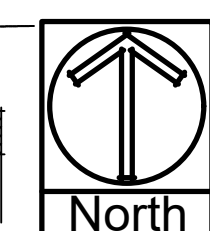
LOT 41
 9887 SF

LOT 35
 9150 SF

LOT 34
 9150 SF

IRRIGATED NATIVE SEED

IRRIGATED NATIVE SEED
 (AT POND BOTTOM)

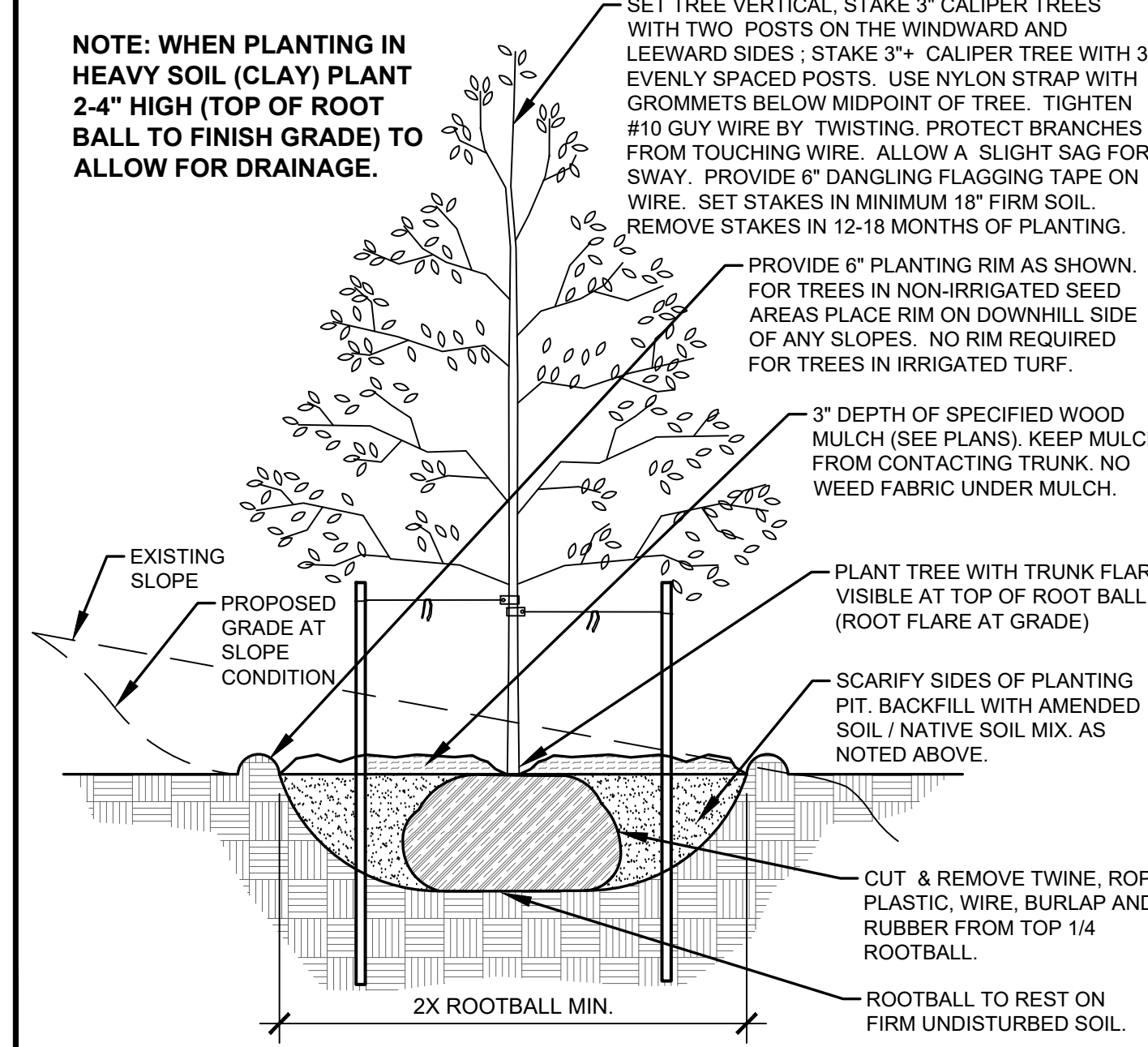


PRELIMINARY PLAN STERLING RANCH EAST FIL. NO. 5

A PARCEL OF LAND BEING A PORTION OF THE SOUTHEAST QUARTER OF SECTION 33 AND SOUTHWEST QUARTER OF SECTION 34, TOWNSHIP 12 SOUTH, RANGE 65 WEST OF THE SIXTH PRINCIPAL MERIDIAN, EL PASO COUNTY, COLORADO

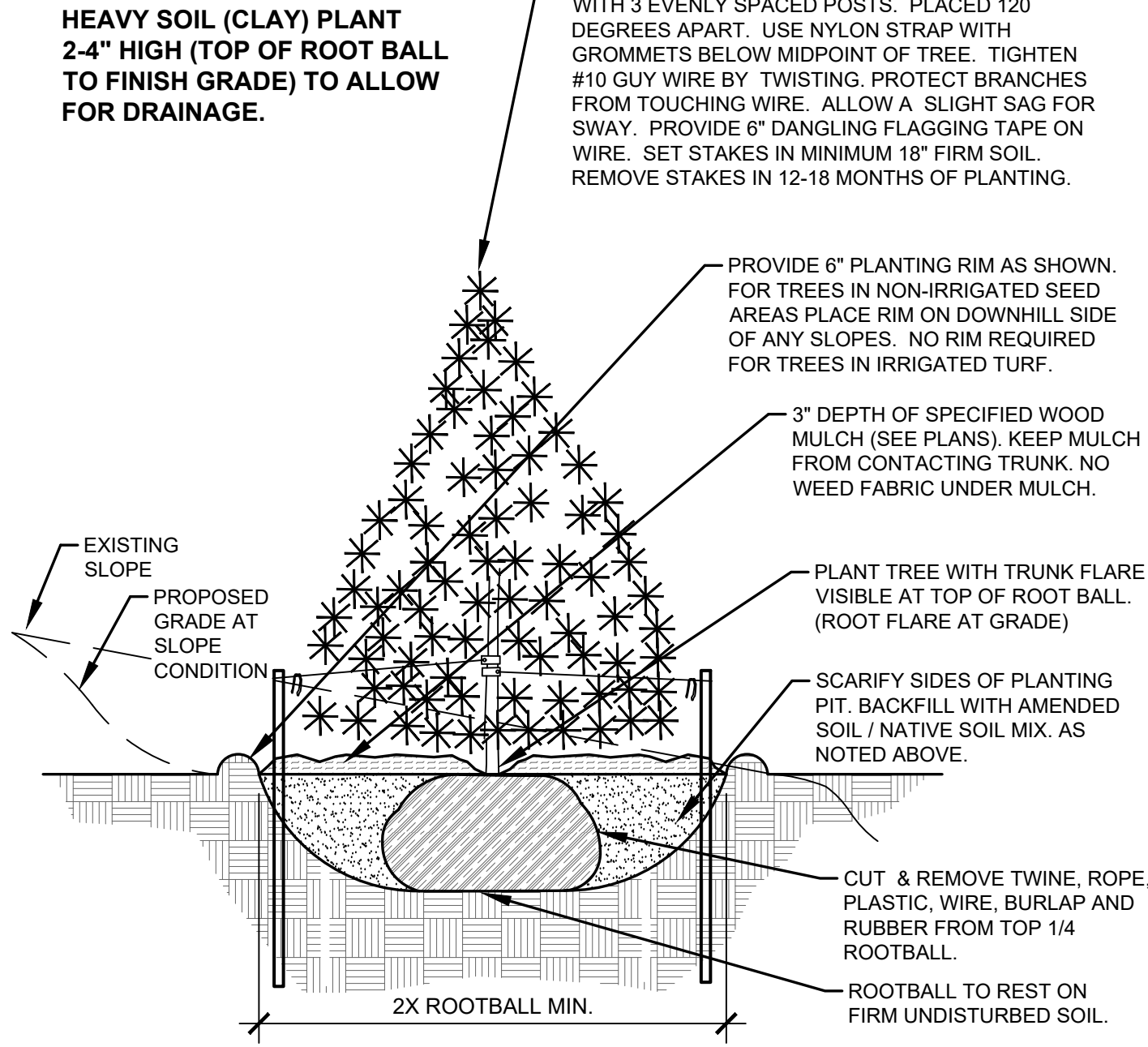
ALL AMERICAN
LANDSCAPE ARCHITECTURE & IRRIGATION DESIGN
RESIDENTIAL & COMMERCIAL LANDSCAPE INSTALLATION
1925 AEROPOLAZA DRIVE
COLORADO SPRINGS, CO 80916
719-527-6313

- NOTES:**
- MARK NORTH SIDE OF TREE AT NURSERY AND PLANT TREE IN THE SAME ORIENTATION.
 - DON'T REMOVE OR CUT LEADER.
 - PRUNE DEAD, BROKEN, CROSSING, OR WEAK BRANCHES PRIOR TO PLANTING. DO NOT REMOVE TERMINAL BUDS THAT EXTEND TO TREE CROWN.
 - NO STRUCTURAL PRUNING OF TREE UNTIL AFTER ESTABLISHMENT PERIOD OF 2 GROWING SEASONS.
 - REMOVE ANY DOUBLE LEADERS UNLESS OTHERWISE NOTED.
 - KEEP TREE MOIST AND SHADED UNTIL PLANTING. AVOID FALL PLANTING IF POSSIBLE.
 - AMENDED BACK FILL SHALL BE 70% SOIL FROM PLANTING PIT AND 30% ORGANIC MATERIAL.
 - WRAP TRUNK ON EXPOSED SITES OR SPECIES WITH THIN BARK. USE ELECTRICAL TAPE, NOT TWINE. WRAP MID OCTOBER AND REMOVE BY END OF MARCH.
 - COORDINATE WITH CITY FORESTRY FOR CURRENT INSECT & DISEASE RECOMMENDATIONS PRIOR TO PLANTING.



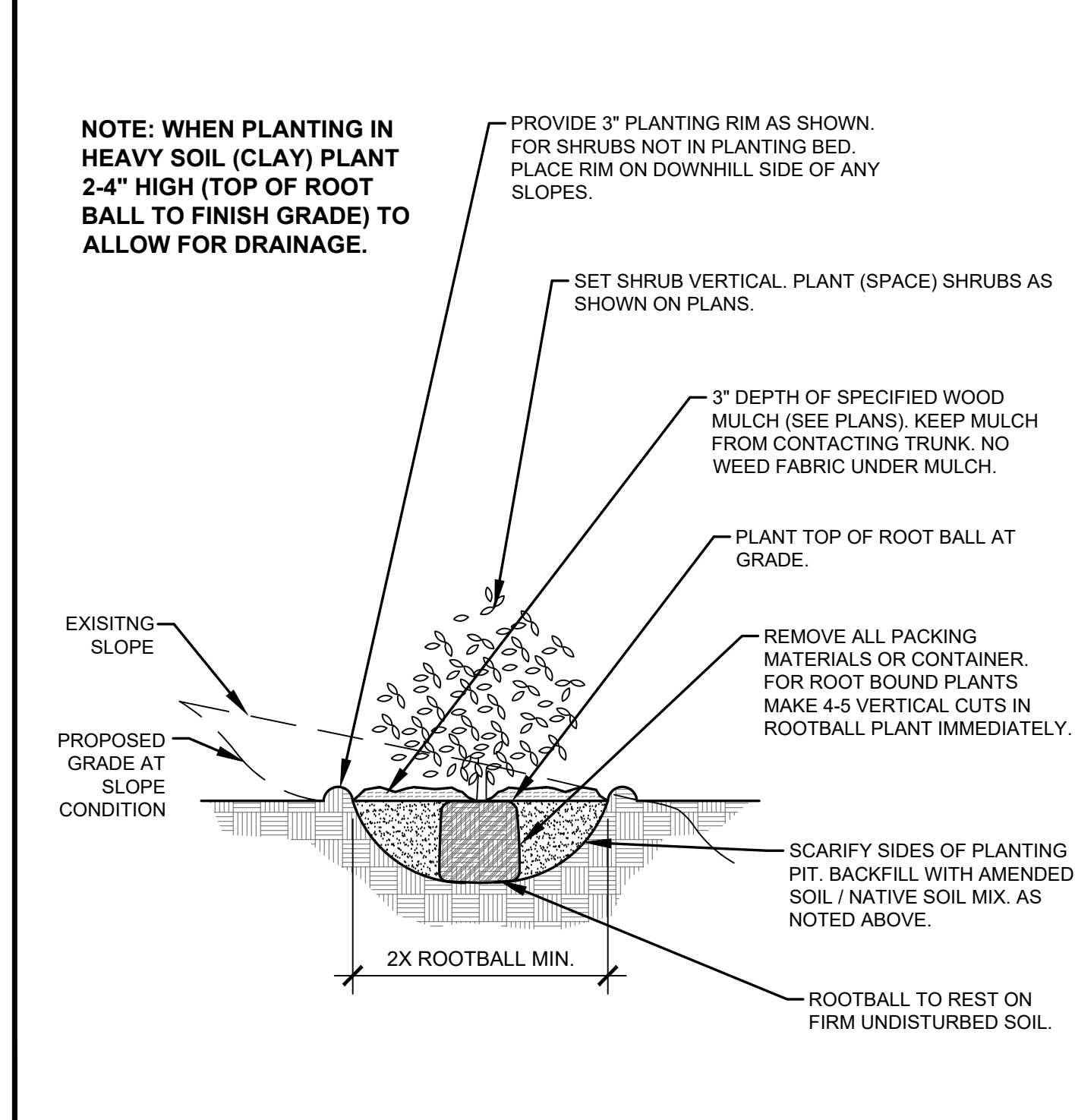
A DECIDUOUS TREE PLANTING DETAIL
NOT TO SCALE

- NOTES:**
- MARK NORTH SIDE OF TREE AT NURSERY AND PLANT TREE IN THE SAME ORIENTATION.
 - DON'T REMOVE OR CUT LEADER.
 - PRUNE DEAD, OR BROKEN BRANCHES PRIOR TO PLANTING.
 - REMOVE ANY DOUBLE LEADERS UNLESS OTHERWISE NOTED.
 - KEEP TREE MOIST AND SHADED UNTIL PLANTING.
 - AMENDED BACK FILL SHALL BE 70% SOIL FROM PLANTING PIT AND 30% ORGANIC MATERIAL.
 - PINE AND SPRUCE SPECIES TO BE SPRAYED FOR IPS BARK BEETLE PRIOR TO PLANTING COORDINATE WITH CITY FORESTRY.
 - ALL TREES TO BE DEEP WATERED AT TIME OF PLANTING.



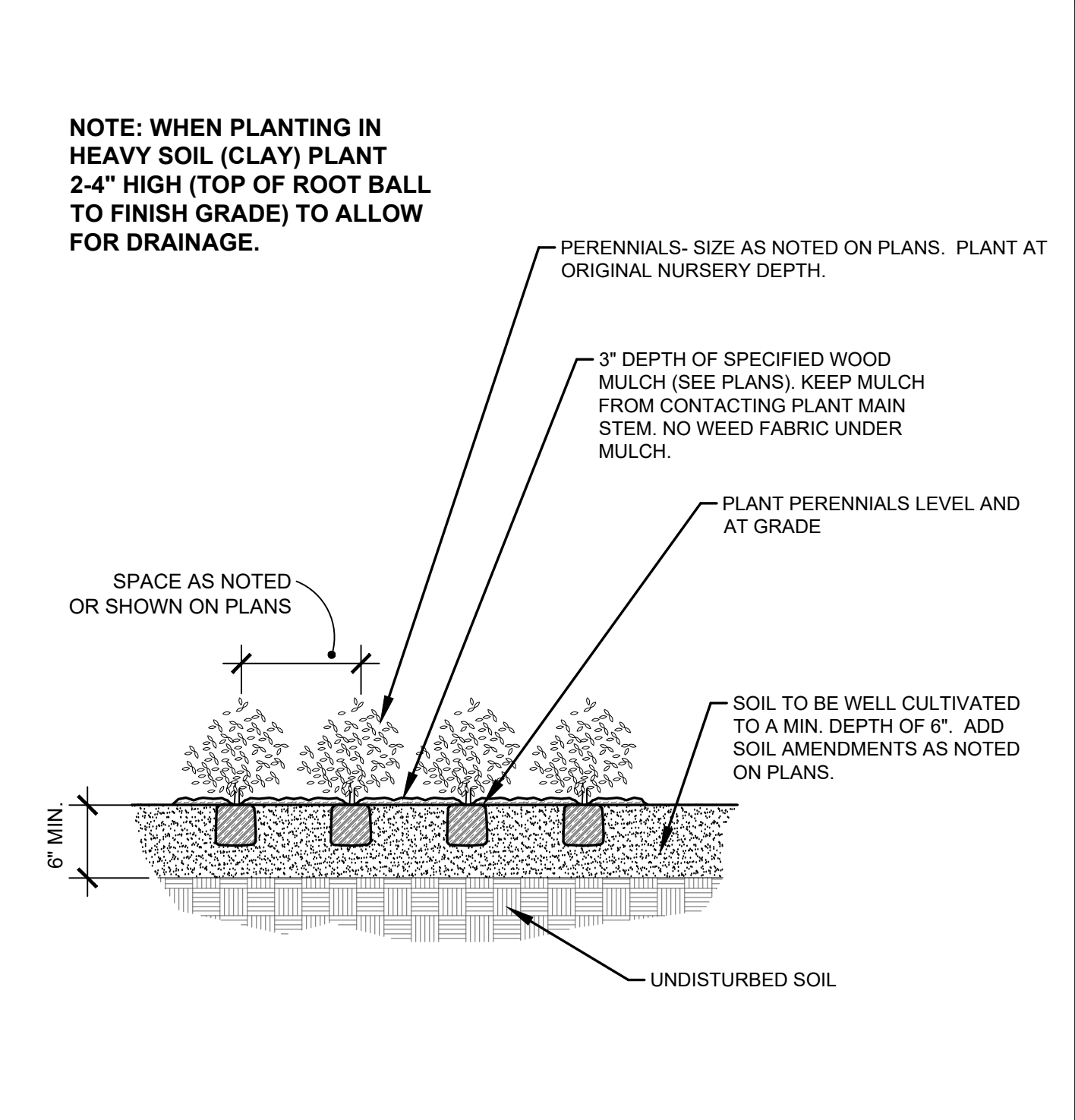
B EVERGREEN TREE PLANTING DETAIL
NOT TO SCALE

- NOTES:**
- PRUNE DEAD, OR BROKEN BRANCHES PRIOR TO PLANTING.
 - KEEP PLANTS MOIST AND SHADED UNTIL PLANTING.
 - AMENDED BACK FILL SHALL BE 70% SOIL FROM PLANTING PIT AND 30% ORGANIC MATERIAL.
 - ALL SHRUBS IN ROCK AREAS TO RECEIVE A WOOD MULCH RING.
 - SHRUBS TO BE DEEP WATERED AT TIME OF PLANTING.



C SHRUB PLANTING DETAIL
NOT TO SCALE

- NOTES:**
- PRUNE DEAD OR BROKEN PARTS PRIOR TO PLANTING.
 - KEEP PLANTS MOIST AND SHADED UNTIL PLANTING.
 - AMENDED BACK FILL SHALL BE 70% SOIL FROM PLANTING PIT AND 30% ORGANIC MATERIAL.
 - ALL PERENNIALS PLANTED IN ROCK AREAS TO RECEIVE WOOD MULCH RINGS AROUND THE BASE OF THE PLANTS.
 - DEEP WATER PERENNIALS AT TIME OF PLANTING.



D PERENNIAL PLANTING DETAIL
NOT TO SCALE

- LANDSCAPE CONTRACTOR NOTES**
- STOCKPILE SOIL (IF APPLICABLE) ON SITE AS SHOWN ON PLANS. STOCKPILED SOIL TO BE USED FOR FILL SOIL FOR LANDSCAPE AREAS AS NEEDED.
 - REMOVE WEEDS, DEAD TREES / SHRUBS, DEBRIS FROM SITE PRIOR TO BEGINNING LANDSCAPE CONSTRUCTION.
 - PLANT QUANTITIES IN PLANT LEGEND ARE FOR CONVENIENCE ONLY. CONTRACTOR TO INSTALL ALL PLANT MATERIAL PER PLANS.
 - INSTALLATION OF PLANT MATERIALS TO BE IN ACCORDANCE WITH THE ASSOCIATED LANDSCAPE CONTRACTORS OF COLORADO HANDBOOK (ALCC), 2007 OR CURRENT EDITION FOR ALL LANDSCAPE CONSTRUCTION ON THIS SITE.
 - LANDSCAPE CONTRACTOR IS RESPONSIBLE FOR THEFTS OR DAMAGE TO ALL PLANT MATERIAL AFTER PLANT MATERIAL IS DELIVERED TO THE JOB SITE.
 - CONTRACTOR IS RESPONSIBLE FOR CONTACTING LANDSCAPE ARCHITECT FOR ALL REQUIRED INSPECTIONS. PROVIDE 48 HOURS MINIMUM NOTICE PRIOR TO SCHEDULE INSPECTIONS. INSPECTIONS TO INCLUDE:
 - PLANT PLACEMENT, PLANT SPECIES, MATERIAL, SIZE, AND QUALITY.
 - HARDSCAPE MATERIAL PLACEMENT / PLANTING BED EDGING.
 - IRRIGATION MAIN LINE / HEAD PLACEMENT INSPECTION (AS APPLICABLE).

- LANDSCAPE INSTALLATION NOTES**
- EDGING FOR TURF, PLANTING BEDS, ROCK, OR MULCH AREAS TO BE ROLL TOP STEEL EDGING WITH PINS OR APPROVED EQUAL. EDGING TO BE EXPOSED 1/2" +/- ABOVE FINISHED GRADES. INSTALL PER MANUFACTURER'S RECOMMENDATIONS.
 - SOD TO BE BLUEGRASS SOD. LAY SOD WITH TIGHT STAGGERED EDGES. (IF APPLICABLE)
 - ALL SEEDED TURF / SOD AREAS TO BE AMENDED WITH 4 CUBIC YARDS OF ORGANIC SOIL AMENDMENT PER 1,000 SF TILLED INTO THE TOP 6" OF SOIL. (IF APPLICABLE)
 - LANDSCAPE WEED FABRIC TO BE INSTALLED PRIOR TO INSTALLING ROCK. INSTALL FABRIC STAPLES AT 9" O.C. SEAMS IN FABRIC TO BE OVERLAPPED 6" MIN. AND SECURED WITH STAPLES. (IF APPLICABLE)
 - ROCK OR MULCH COVER SHALL BE CONTINUOUS UNDER ALL SHRUBS THROUGHOUT THE PROJECT SITE. INSTALL A MULCH RING AROUND ALL PLANT MATERIAL IN ROCK AREAS AS FOLLOWS: TREES = 36" DIAMETER MULCH RING, SHRUBS = 18" DIAMETER MULCH RING, PERENNIALS AND ORNAMENTAL GRASSES = 12" MULCH RING. MULCH RINGS TO BE CASCADE MULCH, 3" IN DEPTH WITH NO WEED FABRIC. NOTE: ALL TREES IN TURF AREAS TO RECEIVE A 24" DIAMETER MULCH RING. (IF APPLICABLE)
 - ALL BOULDERS (IF APPLICABLE) TO BE BURIED 1/3 BELOW GRADE TO PROVIDE A NATURAL APPEARANCE.
 - CONTRACTOR TO INSTALL ALL LANDSCAPE AS SHOWN ON THIS PLAN AND MAKE ANY ADJUSTMENTS NECESSARY DUE TO FIELD VARIATIONS OR ANY UTILITY CHANGES OR DEVIATIONS. MAJOR DEVIATIONS FROM THIS PLAN ARE TO BE APPROVED BY OWNER'S REPRESENTATIVE OR LANDSCAPE ARCHITECT.
 - EXISTING SOIL IN ALL PLANTING BED AREAS TO BE AMENDED WITH THE FOLLOWING: 4 CUBIC YARDS OF ORGANIC SOIL AMENDMENT PER 1,000 SF TILLED INTO TOP 6" OF SOIL.
 - IF APPLICABLE: ALL PARKING LOT ISLAND PLANTERS SHALL BE TILLED / REMOVED TO A DEPTH OF 30" AND REPLACED WITH GRADE 'B' TOPSOIL OR EQUAL.
 - ALL NURSERY PLANT MATERIAL BOTANICAL NAME TAGS TO REMAIN ATTACHED TO THE PLANT MATERIAL. AFTER FINAL INSPECTION THEY ARE TO BE REMOVED.
 - LANDSCAPE CONTRACTOR TO NOTIFY LANDSCAPE ARCHITECT IF DOWNSPOUTS OR STORM DRAINAGE FROM ADJACENT LOTS WILL ADVERSELY AFFECT LANDSCAPED AREAS ON THESE PLANS.
 - TREES NOT TO BE PLACED ABOVE OR WITHIN 6' OF GAS, WATER, SEWER, STORM DRAINS OR ELECTRICAL UTILITIES. PLANTS NOT TO BE INSTALLED 3' OF ANY UTILITY BOXES THAT NEED TO BE ACCESSED FOR UTILITY MAINTENANCE.
- EXISTING TREE PROTECTION (IF APPLICABLE)**
ANY EXISTING TREES OR PLANT MATERIAL NOTED TO BE PROTECTED ON THESE PLANS ARE TO BE PROTECTED FROM CONSTRUCTION DAMAGE. CONTRACTOR WILL TAKE RESPONSIBILITY FOR ANY DAMAGE TO EXISTING PROTECTED TREES OR LANDSCAPE. ANY DAMAGE TO EXISTING TREES OR PLANT MATERIAL CALLED OUT TO BE PROTECTED SHALL BE REPLACED WITH EQUIVALENT PLANT MATERIAL.
- BARK BEETLE PROTECTION NOTE (IF APPLICABLE)**
LANDSCAPE CONTRACTOR TO PROVIDE PROTECTION FOR ALL NEW PINE TREES FOR BARK BEETLE PROTECTION. INSPECT ALL PINE TREES PRIOR TO PLANTING AND SPRAY TREES WITH THE FOLLOWING:
--ASTROBRAND PERMETHRIN
--APPLY TREATMENT 2 TIMES A YEAR FOR TWO CONSECUTIVE YEARS PER MANUFACTURER'S GUIDELINES
- SLOPE PROTECTION (IF APPLICABLE)**
CONTRACTOR TO INSTALL EROSION CONTROL BLANKETS OR EQUAL ON SEEDED SLOPES 3:1 AND STEEPER. SECURE BLANKETS TO SLOPE PER MANUFACTURER'S RECOMMENDATIONS.
- EROSION CONTROL BLANKET TO CONTAIN 100% AGRICULTURAL STRAW BLANKET WITH PHOTO-DEGRADABLE NETTING ON BOTH SIDES.
- CONTRACTOR TO PROVIDE 4-8" DIAMETER COBBLE (WITH LANDSCAPE FABRIC) FOR ALL CURB INLETS INTO DETENTION AREAS IF APPLICABLE. PROVIDE A SWALE FROM INLET TO DETENTION AREA. A MINIMUM OF 2' WIDE AND MAXIMUM 3' WIDE. (IF APPLICABLE)

- SEEDING NOTES**
- IRRIGATED NATIVE SEED TO BE EL PASO COUNTY CONVERSATION DISTRICT ALL-PURPOSE LOW GROW MIX 42 LBS/ACRE USING A ONE STEP HYDRO-SEED PROCESS. SEE BELOW FOR WHAT THE MIX CONTAINS.
- | | |
|-----------------------|-----|
| --BUFFALOGRASS | 25% |
| --GRAMA BLUE | 20% |
| --GRAMA SIDOATS | 20% |
| --GREEN NEEDLEGRASS | 5% |
| --WHEATGRASS, WESTERN | 20% |
| --DROPS/SEED, SAND | 1% |
- SOIL IN IRRIGATED SEED AREAS TO BE AMENDED WITH: 1/3 HIGH QUALITY TOP SOIL, 2/3 COW MANURE, AND 1/3 NATIVE SOIL AT 4 C.Y./1000 SF TILLED INTO TOP 4-6" OF SOIL PRIOR TO SEEDING. 2-3 WEEKS AFTER EMERGENCE ADD SUPER CROP FERTILIZER 20-20-10 AT 4 LBS PER 1,000 SF. ADD 1 LB. NITROGEN PER 1000 SF IN MID TO LATE JUNE, IN EARLY TO MID AUGUST, AND LATE SEPTEMBER.
- IRRIGATED NATIVE SEED TO BE EL PASO COUNTY CONVERSATION DISTRICT ALL-PURPOSE MIX 42 LBS/ACRE USING A ONE STEP HYDRO-SEED PROCESS. SEE BELOW FOR WHAT THE MIX CONTAINS. (AT POND BOTTOM)
- | | | | |
|----------------------|-----|----------------------|-----|
| --BIG BLUESTEM | 20% | --SWITCHGRASS | 10% |
| --GRAMA BLUE | 10% | --PRAIRIE SANDREED | 10% |
| --GREEN NEEDLEGRASS | 10% | --YELLOW INDIANGRASS | 10% |
| --WHEATGRASS WESTERN | 20% | --GRAMA SIDOATS | 10% |
- SOIL IN IRRIGATED SEED AREAS TO BE AMENDED WITH: 1/3 HIGH QUALITY TOP SOIL, 2/3 COW MANURE, AND 1/3 NATIVE SOIL AT 4 C.Y./1000 SF TILLED INTO TOP 4-6" OF SOIL PRIOR TO SEEDING. 2-3 WEEKS AFTER EMERGENCE ADD SUPER CROP FERTILIZER 20-20-10 AT 4 LBS PER 1,000 SF. ADD 1 LB. NITROGEN PER 1000 SF IN MID TO LATE JUNE, IN EARLY TO MID AUGUST, AND LATE SEPTEMBER.
- ANY EXISTING SEEDED AREAS THAT ARE DISTURBED NEAR PROPERTY BOUNDARIES TO BE SEEDED WITH THE ALL PURPOSE MIX USING A ONE STEP HYDRO-MULCH.
- ANY BARE AREAS LARGER THAN A SQUARE FOOT AFTER SEED GERMINATION TO BE SEEDED TO FILL IN SUCH AREAS.

DATE	REVISION DESCRIPTION

FOR CONSTRUCTION
 NOT FOR CONSTRUCTION

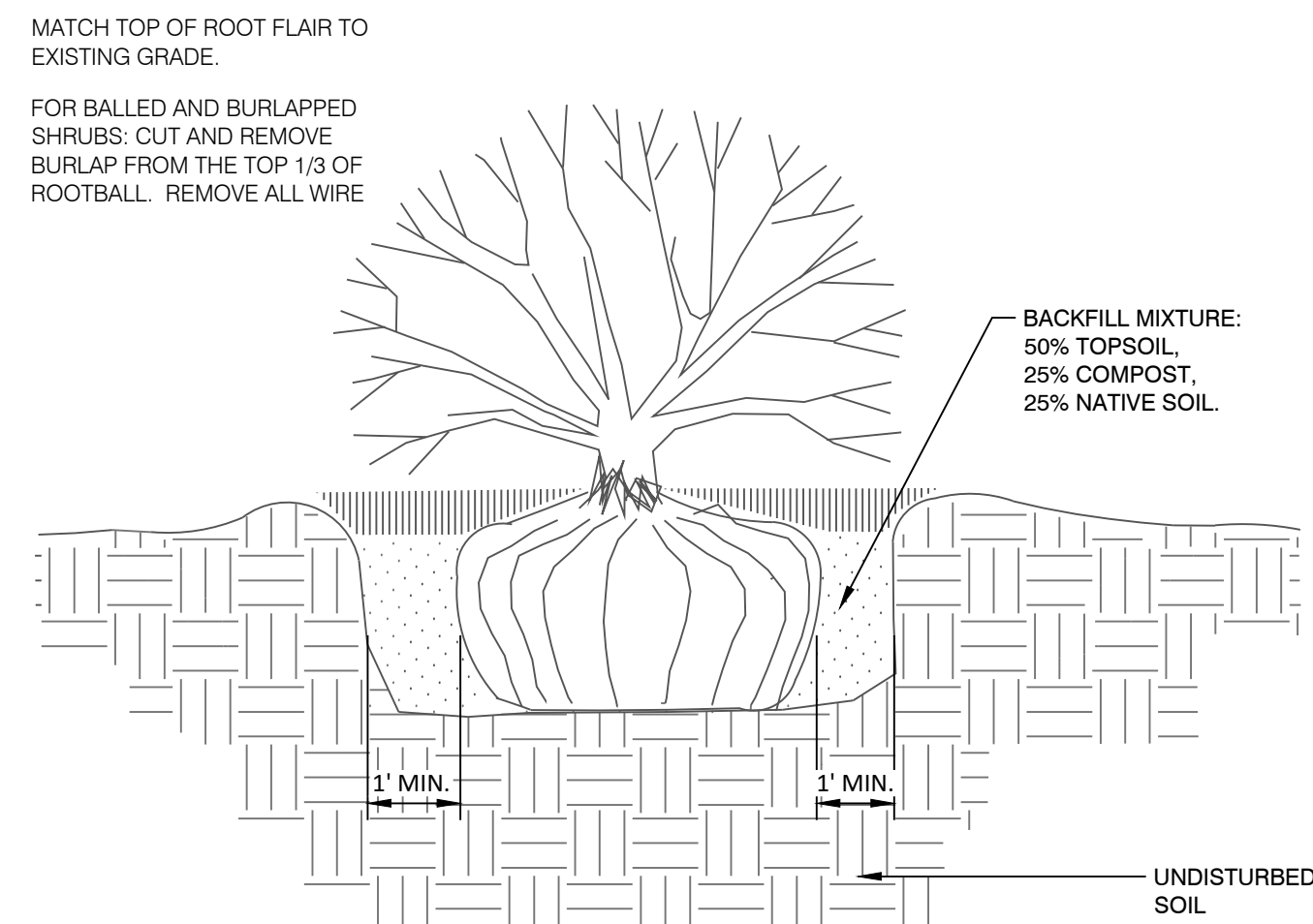


STERLING RANCH EAST
FILING # 5
STERLING RANCH ROAD & LAKE TAHOE DRIVE

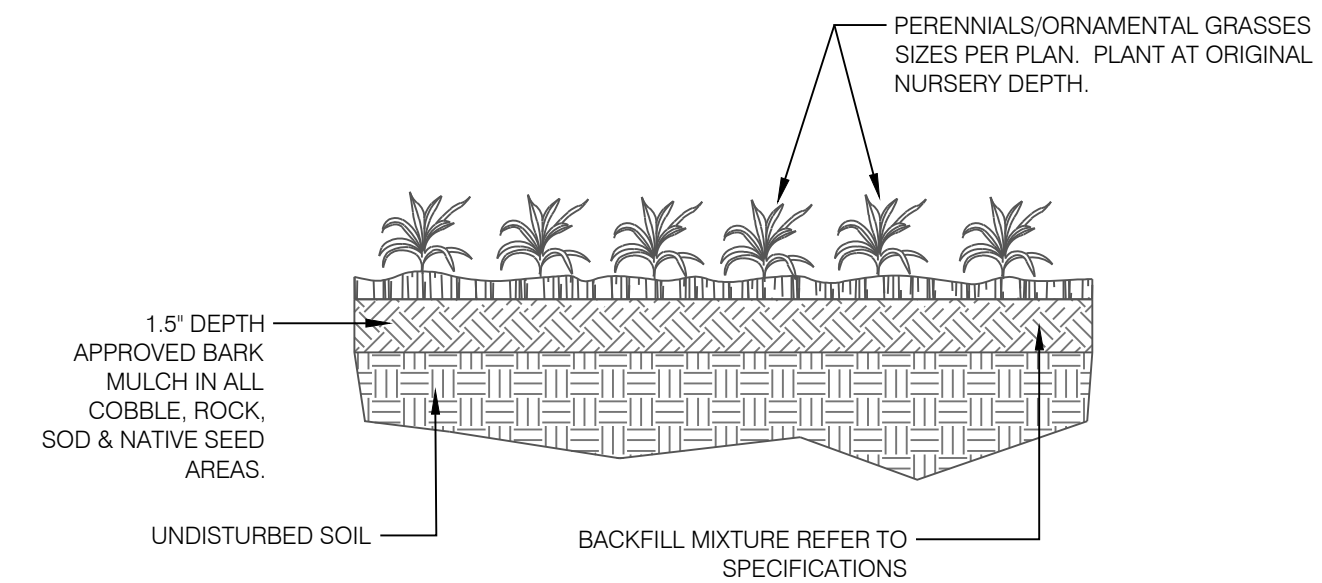
JOB NUMBER: 2711-0723
DATE: 7/27/2023
DRAWN BY: MB
DRAWING DESCRIPTION: PLANTING DETAILS & NOTES
SHEET #: SHEET 17 OF 21
© 2013 BY ALL AMERICAN. ALL RIGHTS RESERVED.

PRELIMINARY PLAN STERLING RANCH EAST FIL. NO. 5

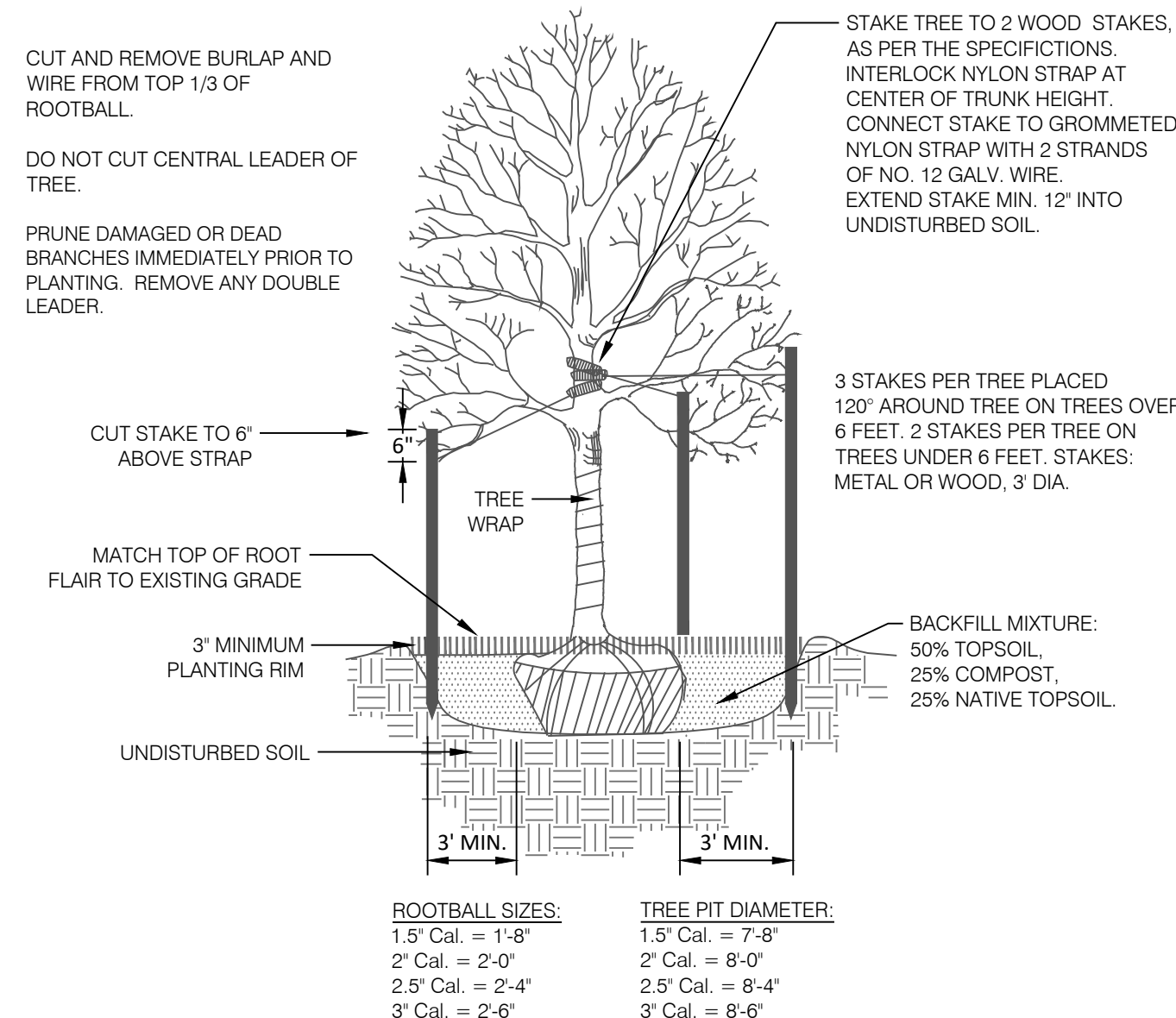
A PARCEL OF LAND BEING A PORTION OF THE SOUTHEAST QUARTER OF SECTION 33 AND SOUTHWEST QUARTER OF SECTION 34, TOWNSHIP 12 SOUTH, RANGE 65 WEST OF THE SIXTH PRINCIPAL MERIDIAN, EL PASO COUNTY, COLORADO



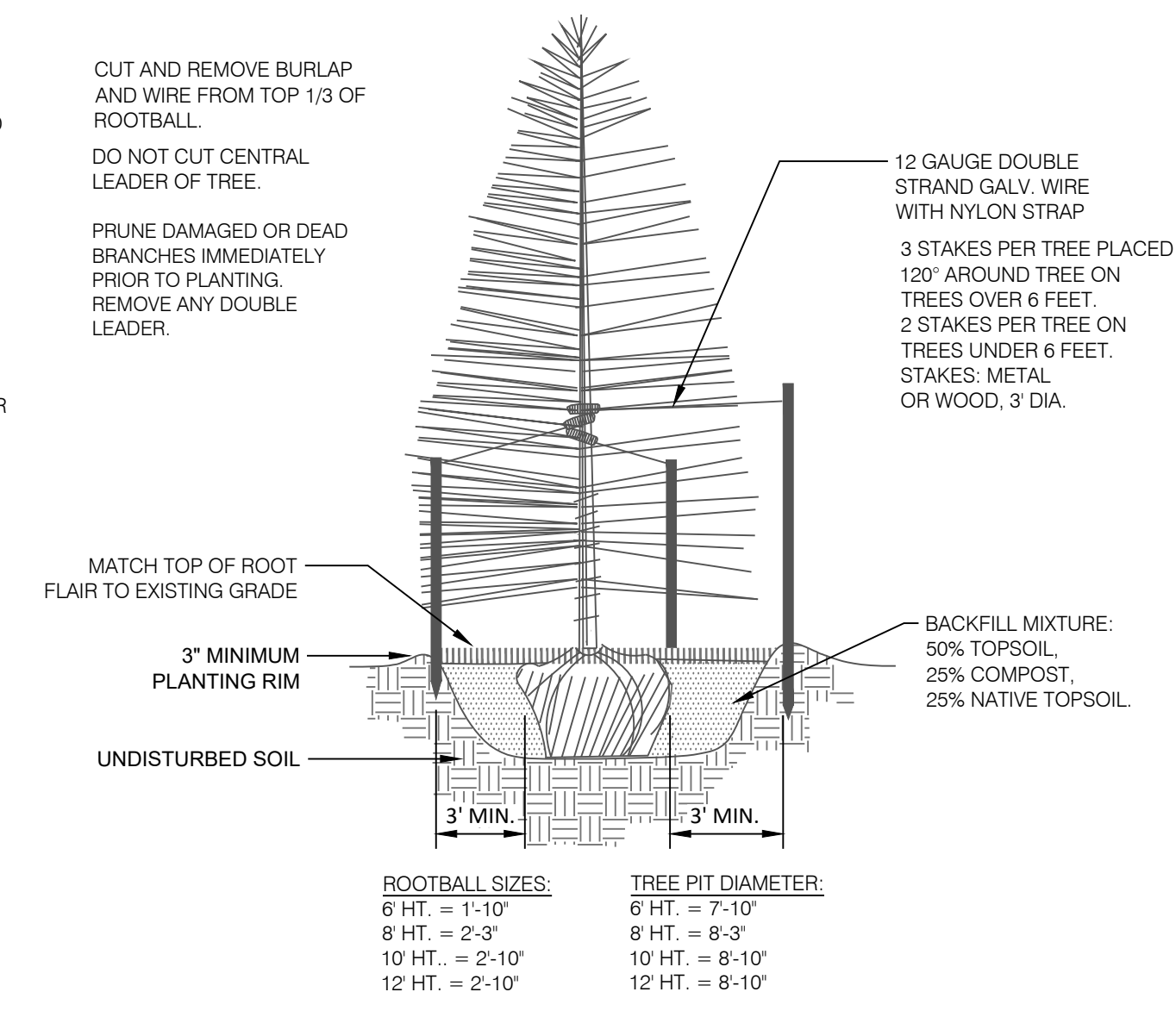
1 SHRUB PLANTING DETAIL
N.T.S. P-WA-24



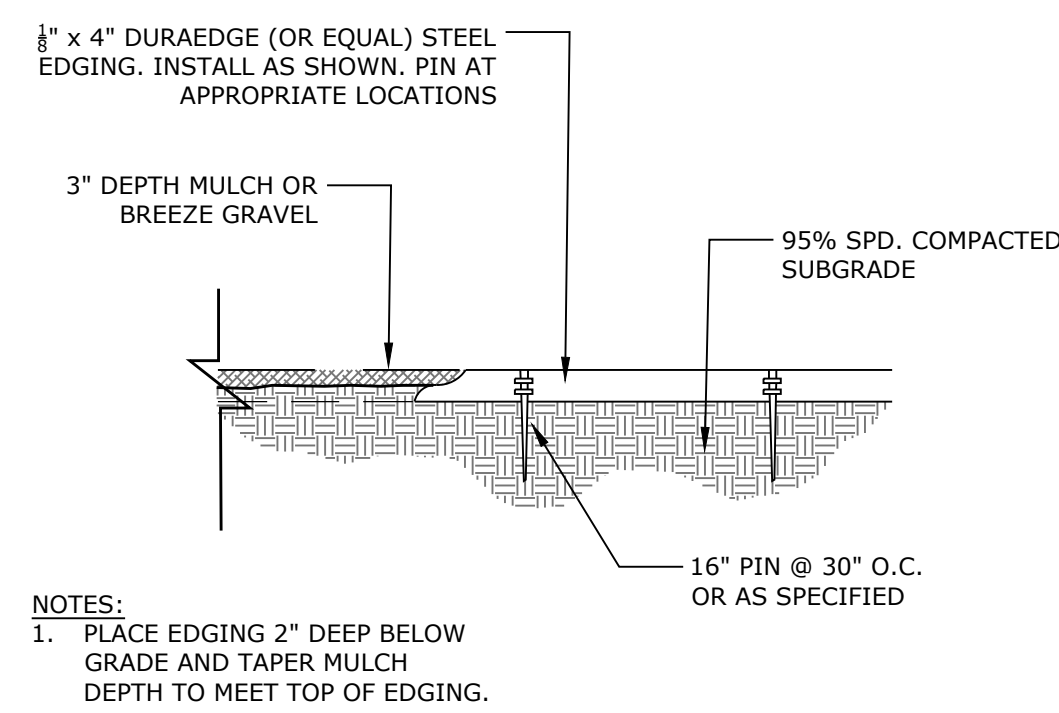
2 PERENNIAL / ORNAMENTAL GRASS PLANTING
N.T.S. 3293-04



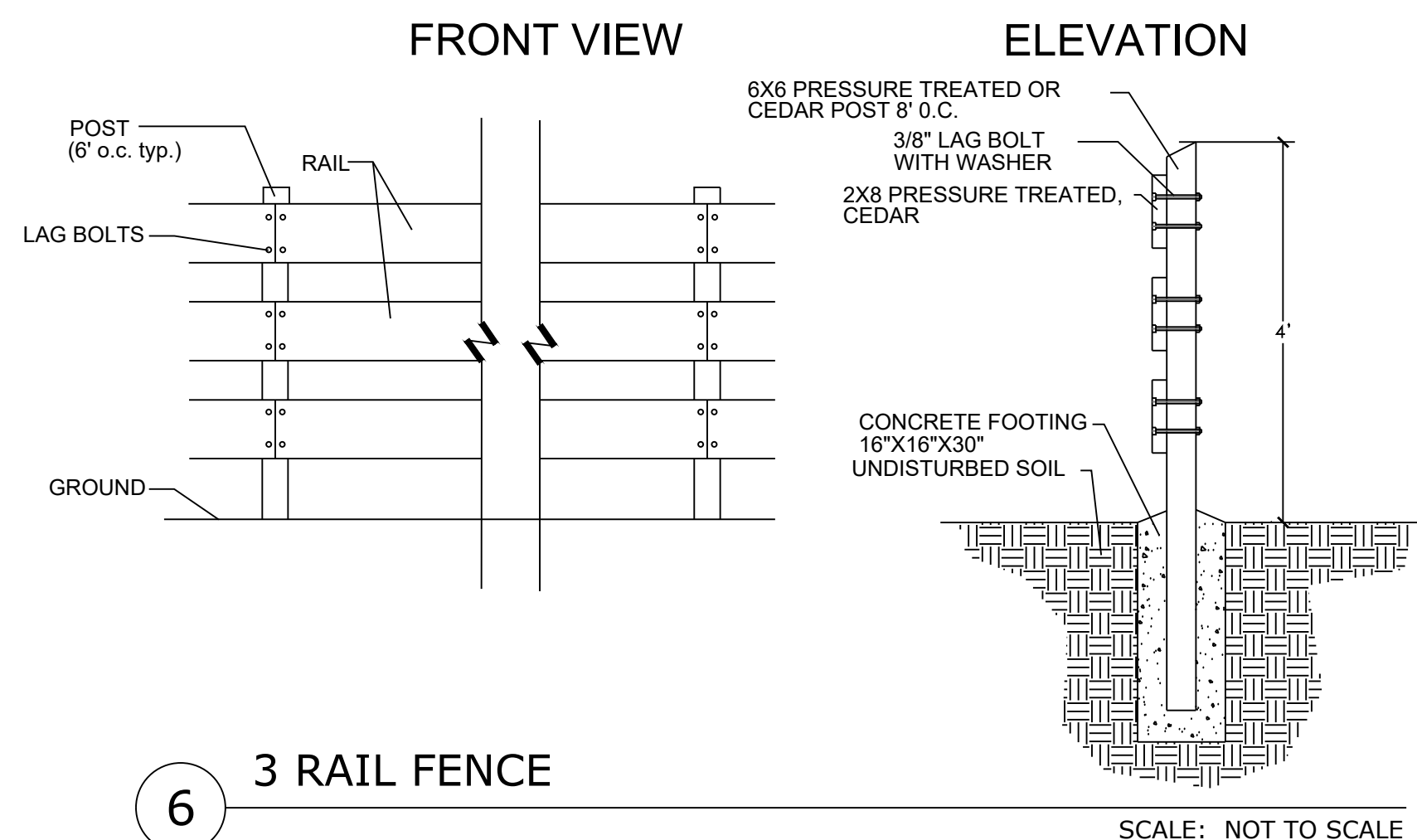
3 DECIDUOUS TREE PLANTING DETAIL
N.T.S. P-WA-20



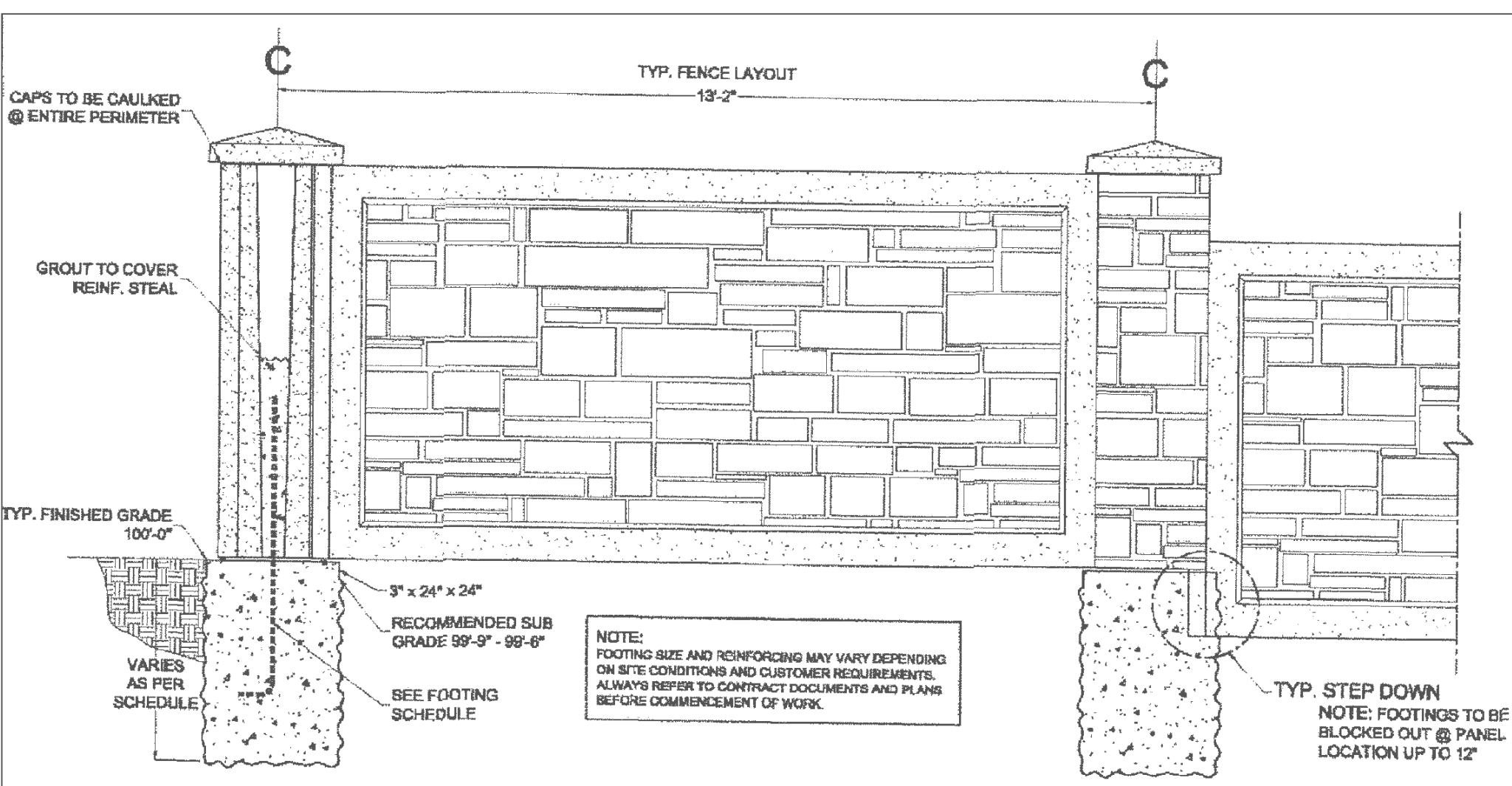
4 CONIFEROUS TREE PLANTING DETAIL
N.T.S. P-WA-21



5 STEEL EDGING
N.T.S. 329413-09



6 3 RAIL FENCE
SCALE: NOT TO SCALE



7 6' CONCRETE SLAT WALL
N.T.S.

PLANT SCHEDULE

DECIDUOUS TREES	CODE	QTY	BOTANICAL / COMMON NAME	HEIGHT	WIDTH	SIZE	COND	KEY	KEY
	Ac2	2	Acer platanoides 'Columnare' / Columnar Norway Maple	45'	15'	2.5" Cal.	B&B		4S
	Tco	10	Tilia cordata / Littleleaf Linden	45'	35'	2" Cal.	B&B	NonX	
EVERGREEN TREES	CODE	QTY	BOTANICAL / COMMON NAME	HEIGHT	WIDTH	SIZE	COND	KEY	KEY
	Js	28	Juniperus scopulorum 'Skyrocket' / Skyrocket Juniper	20'	4'	8" HT	B&B		125678D
	Ped	7	Pinus edulis / Pinon Pine	30'	20'	6" HT	B&B	Xeric	
	Pmu	3	Pinus mugo / Mugo Pine	20'	15'	6" HT	B&B	Xeric	
	Pni	6	Pinus nigra / Austrian Black Pine	60'	40'	8" HT	B&B	NonX	
ORNAMENTAL TREES	CODE	QTY	BOTANICAL / COMMON NAME	HEIGHT	WIDTH	SIZE	COND	KEY	KEY
	Pcn	1	Prunus cerasifera 'Newport' / Newport Flowering Plum	20'	15'	1.5" Cal.	B&B		4SS
SHRUBS	CODE	QTY	BOTANICAL / COMMON NAME	HEIGHT	WIDTH	SIZE	COND	XERIC	KEY
	Bda	1	Buddleja davidii / Butterfly Bush	5'	5'	5 GAL	CONT	NonX	
	Pmo	17	Physocarpus monogynus / Mountain Ninebark	4'	4'	5 GAL	CONT	Xeric	
	Rau	26	Ribes aureum / Golden Currant	6'	6'	5 GAL	CONT	Xeric	
	Str	32	Spiraea trilobata 'Fairy Queen' / Fairy Queen Spirea	4'	4'	5 GAL	CONT	NonX	
EVERGREEN SHRUBS	CODE	QTY	BOTANICAL / COMMON NAME	HEIGHT	WIDTH	SIZE	COND	XERIC	KEY
	Pgg	12	Picea pungens glauca 'Globosa' / Globed Colorado Blue Spruce	10'	10'	5 GAL	CONT	NonX	
	Pm	8	Pinus mugo 'Mops' / Mugo Pine	4'	4'	5 GAL	CONT	Xeric	1256D
GRASSES	CODE	QTY	BOTANICAL / COMMON NAME	HEIGHT	WIDTH	SIZE	COND	XERIC	KEY
	Cxa	69	Calamagrostis x acutiflora 'Karl Foerster' / Feather Reed Grass	5'	2'	1 GAL	CONT	NonX	
	Ssc	46	Schizachyrium scoparium / Little Bluestem Grass	4'	2.5'	1 GAL	CONT	NonX	
ANNUALS/PERENNIALS	CODE	QTY	BOTANICAL / COMMON NAME	HEIGHT	WIDTH	SIZE	COND	XERIC	KEY
	Ami	31	Achillea millefolium / Common Yarrow	3'	2'	1 GAL	CONT	NonX	

GROUND COVER LEGEND

	LOW ALTERNATIVE TURF GRASS	105,032 sf		TALL FESCUE SOD	24,035 sf
	ROCK MULCH	12,131 sf		PLAYGROUND MULCH	2,883 sf



N.E.S. Inc.
619 N. Cascade Avenue, Suite 200
Colorado Springs, CO 80903

Tel. 719.471.0073
Fax 719.471.0267

www.nescolorado.com

© 2012. All Rights Reserved.

PLANNER / LANDSCAPE ARCHITECT

IN ASSOCIATION WITH

STAMP

ISSUE / REVISION

SHEET TITLE

SHEET NUMBER
PLAN FILE #

STERLING RANCH EAST FILING 5
TRACT E & B PARK PLAN

DATE: 07.27.23
PROJECT MGR: A. BARLOW
PREPARED BY: B. WILLIAMS

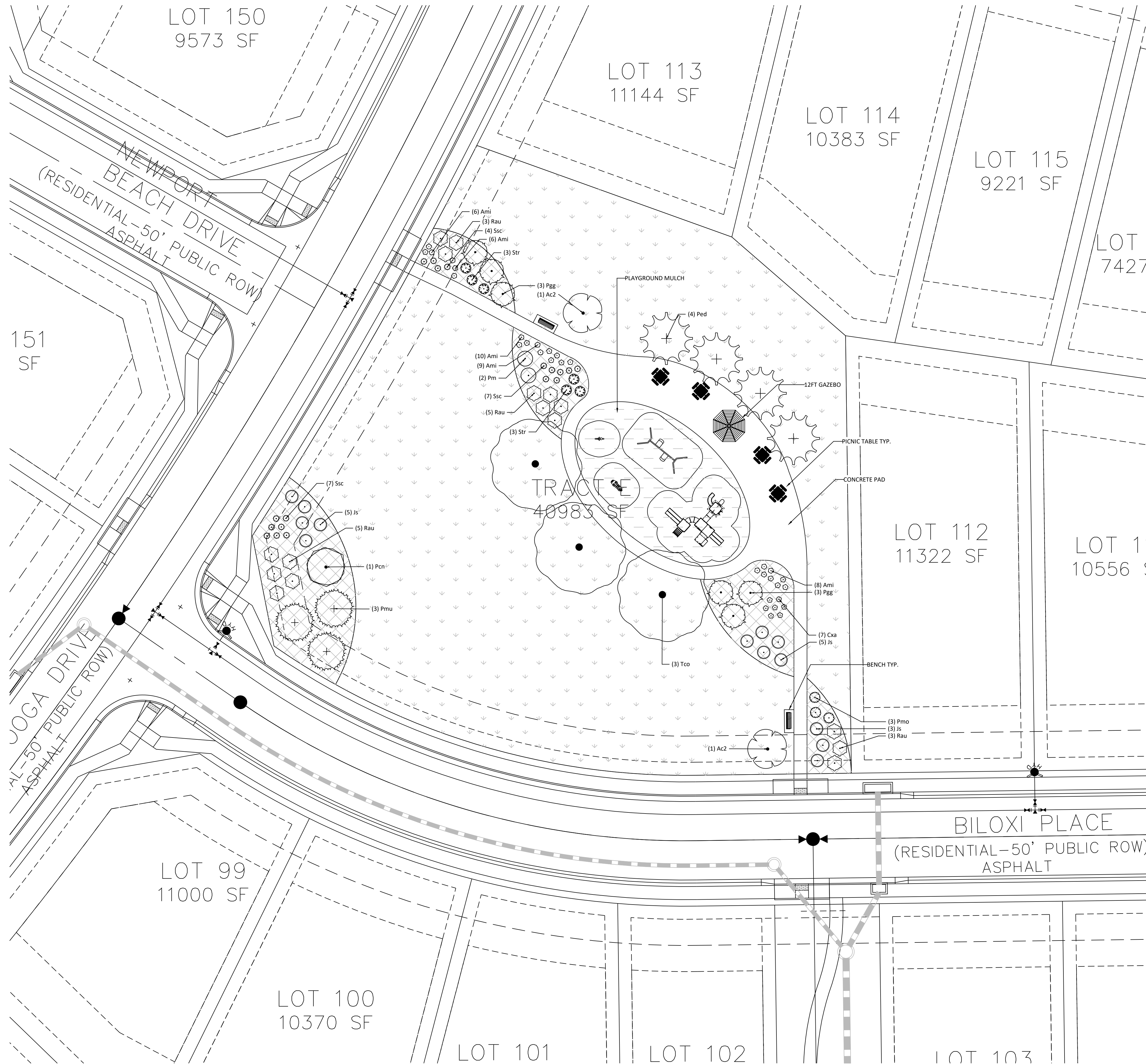
LANDSCAPE DETAILS

18

18 OF 21

PRELIMINARY PLAN STERLING RANCH EAST FIL. NO. 5

A PARCEL OF LAND BEING A PORTION OF THE SOUTHEAST QUARTER OF SECTION 33 AND SOUTHWEST QUARTER OF SECTION
34, TOWNSHIP 12 SOUTH, RANGE 65 WEST OF THE SIXTH PRINCIPAL MERIDIAN, EL PASO COUNTY, COLORADO



GROUND COVER LEGEND

	LOW ALTERNATIVE TURF	
	GRASS	105,032 sf
	LOW-GROW NATIVE SEED MIX	
	ROCK MULCH	12,131 sf
	TALL FESCUE SOD	24,035 sf
	PLAYGROUND MULCH	2,883 sf



N.E.S. Inc.
619 N. Cascade Avenue, Suite 200
Colorado Springs, CO 80903
Tel. 719.471.0073
Fax 719.471.0267
www.nescolorado.com
© 2012. All Rights Reserved.

STERLING RANCH EAST FILING 5

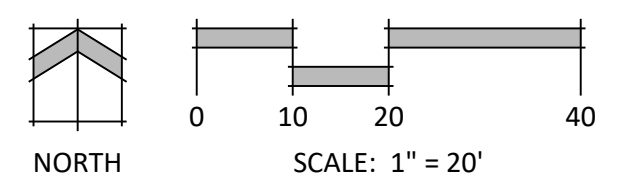
TRACT E & B
PARK PLAN

DATE: 07.27.23
PROJECT MGR: A. BARLOW
PREPARED BY: B. WILLIAMS

TRACT E LANDSCAPE PLAN

19

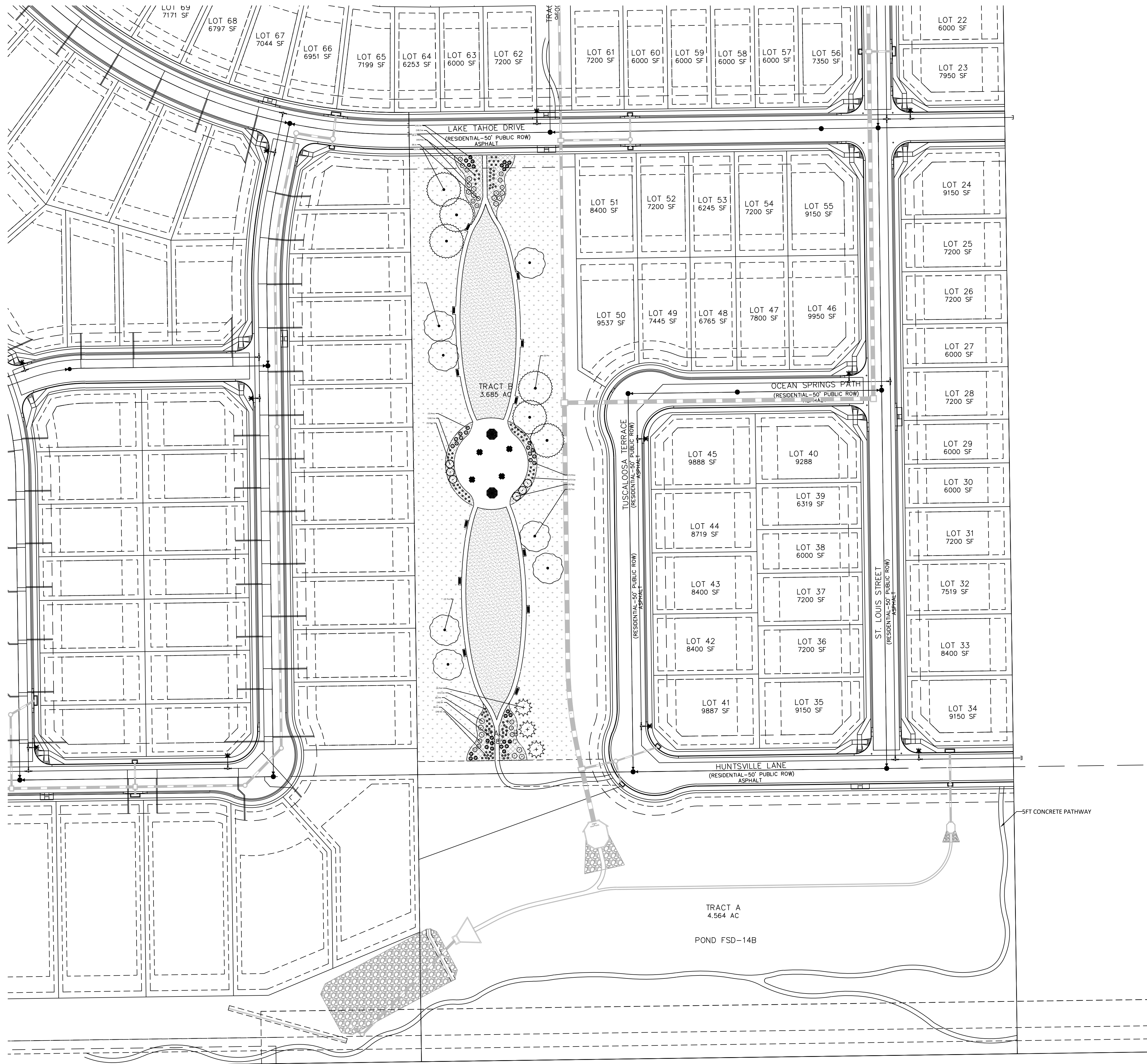
19 OF 21



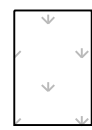
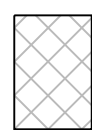
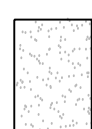
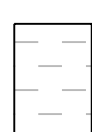
P:\class2\sterling ranch east\admin\summits\sterling ranch east filing 5\drawings\arch\p\l\tract e and b park plan.dwg [Tract E] 11/20/2023 3:28:53 PM ksnab

PRELIMINARY PLAN STERLING RANCH EAST FIL. NO. 5

A PARCEL OF LAND BEING A PORTION OF THE SOUTHEAST QUARTER OF SECTION 33 AND SOUTHWEST QUARTER OF SECTION 34, TOWNSHIP 12 SOUTH, RANGE 65 WEST OF THE SIXTH PRINCIPAL MERIDIAN, EL PASO COUNTY, COLORADO



GROUND COVER LEGEND

	LOW ALTERNATIVE TURF GRASS LOW-GROW NATIVE SEED MIX	105,032 sf
	ROCK MULCH	12,131 sf
	TALL FESCUE SOD	24,035 sf
	PLAYGROUND MULCH	2,883 sf



N.E.S. Inc.
619 N. Cascade Avenue, Suite 200
Colorado Springs, CO 80903
Tel. 719.471.0073
Fax 719.471.0267
www.nescolorado.com
© 2012. All Rights Reserved.

STERLING RANCH EAST FILING 5

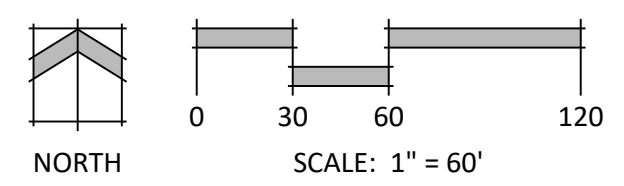
TRACT E & B
PARK PLAN

DATE: 07.27.23
PROJECT MGR: A. BARLOW
PREPARED BY: B. WILLIAMS

TRACT B PRELIMINARY LANDSCAPE PLAN

20

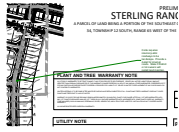
20 OF 21



P:\Classic2\Sterling Ranch East\Admin\Submittals\Sterling Ranch East Filing 5\Drawings\Arch\PL\Tract E and B park plan.dwg [Tract B] 11/20/2023 3:30:13 PM tkab

V1_Landscape Plan drawings comment.pdf Markup Summary

dsdparsons (3)



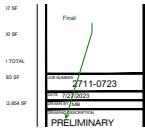
Subject: Callout
Page Label: [2] PLTG 2711-0723 v.2-L-1
Author: dsdparsons
Date: 11/21/2024 8:08:42 AM
Status:
Color: ■
Layer:
Space:

Code requires internal public roadways to be landscape. Provide a detail for internal roads. State if District or lot owners will install land maintain.



Subject: Callout
Page Label: [2] PLTG 2711-0723 v.2-L-1
Author: dsdparsons
Date: 11/21/2024 8:09:34 AM
Status:
Color: ■
Layer:
Space:

this is final plan



Subject: Callout
Page Label: [2] PLTG 2711-0723 v.2-L-1
Author: dsdparsons
Date: 11/21/2024 8:09:42 AM
Status:
Color: ■
Layer:
Space:

Final