

N 88°49'52" E
60.02'

Polyline Report
Mon Oct 11 15:01:53 2021

Northing	Easting	Bearing	Distance
9418.19	4760.60	N 00°25'10" E	1062.51
10480.67	4768.38	N 88°49'52" E	60.02
10481.90	4828.39	S 00°25'10" W	1093.16
9388.77	4820.39	S 63°48'01" E	821.37
9026.13	5557.37	S 00°20'05" E	273.27
8752.87	5558.97	S 89°39'55" W	494.03
8749.98	5064.95		

Radius: 921.12 Chord: 524.20 Degree: 6°13'13" Dir: Right
 Length: 531.54 Delta: 33°03'48" Tangent: 273.40
 Chord BRG:N 31°57'30" W Rad-In:N 41°30'36" E Rad-Out:N 74°34'24" E
 Radius Point: 9439.75,5675.42

9194.73	4787.49	N 15°25'37" W	104.44
9295.41	4759.70	N 00°25'10" E	122.79
9418.19	4760.60		

Closure Error Distance> 0.0026 Error Bearing> S 86°39'46" E
 Closure Precision> 1 in 1760783.5 Total Distance> 4563.13
 Polyline Area: 378851.72 sq ft, 8.697 acres

N 00°25'10" E
122.79'

N 15°25'37" W
104.44'

S 63°48'01" E
821.37'

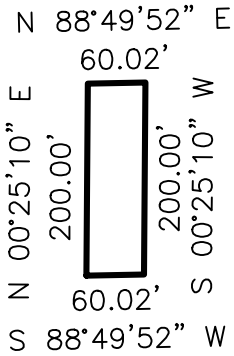
S 00°20'05" E
273.27'

LOT 1

L=531.54'
 R=921.12'
 D=33°03'48"
 CB=S 31°57'30" E
 CL=524.20'

S 89°39'55" W 494.03'

TRACT A
RIGHT-OF-WAY
DEDICATION

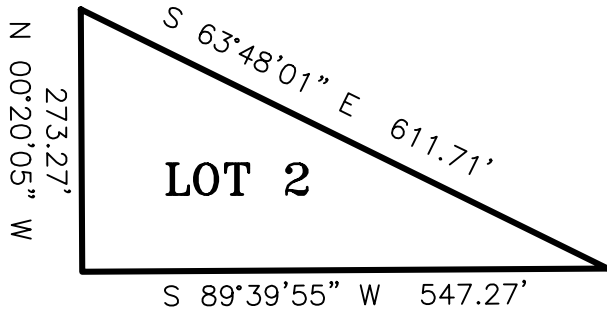


Polyline Report

Mon Oct 11 14:49:19 2021

Northing	Easting	Bearing	Distance
10468.98	8292.70		
		N 00°25'10" E	200.00
10668.97	8294.17		
		N 88°49'52" E	60.02
10670.20	8354.17		
		S 00°25'10" W	200.00
10470.20	8352.71		
		S 88°49'52" W	60.02
10468.98	8292.70		

Closure Error Distance> 0.0000 Error Bearing> S 88°49'52" W
 Closure Precision> 1 in 52004009.7 Total Distance> 520.04
 Polyline Area: 11999.69 sq ft, 0.275 acres



Polyline Report

Mon Oct 11 15:40:39 2021

Northing	Easting	Bearing	Distance
8958.62	8888.10		
		S 63°48'01" E	611.71
8688.55	9436.96		
		S 89°39'55" W	547.27
8685.36	8889.70		
		N 00°20'05" W	273.27
8958.62	8888.10		

Closure Error Distance> 0.0067 Error Bearing> N 66°21'34" W
 Closure Precision> 1 in 214040.3 Total Distance> 1432.25
 Polyline Area: 74776.45 sq ft, 1.717 acres

N 88°49'52" E
60.02'

OVERALL PARCEL

Polyline Report
Mon Oct 11 14:38:30 2021

Northing	Easting	Bearing	Distance
9308.92	6671.55		
9431.70	6672.44	N 00°25'10" E	122.79
10694.18	6681.69	N 00°25'10" E	1262.51
10695.40	6741.69	N 88°49'52" E	60.02
9402.28	6732.23	S 00°25'10" W	1293.16
8769.57	8018.07	S 63°48'01" E	1433.08
8763.49	6976.78	S 89°39'55" W	1041.31
Radius: 921.12 Chord: 524.20 Degree: 6°13'13" Dir: Right Length: 531.54 Delta: 33°03'48" Tangent: 273.40 Chord BRG: N 31°57'30" W Rad-In: N 41°30'36" E Rad-Out: N 74°34'24" E Radius Point: 9453.26, 7587.26			
9208.24	6699.32		
		N 15°25'37" W	104.44
9308.91	6671.54		

Closure Error Distance > 0.0070 Error Bearing > N 68°08'14" E
Closure Precision > 1 in 840665.2 Total Distance > 5848.85
Polyline Area: 465628.37 sq ft, 10.689 acres

N 00°25'10" E
122.79'
N 15°25'37" W
104.44'

S 63°48'01" E
1433.08'

L=531.54'
R=921.12'
D=33°03'48"
CB=S 31°57'30" E
CL=524.20'

S 89°39'55" W 1041.31'

