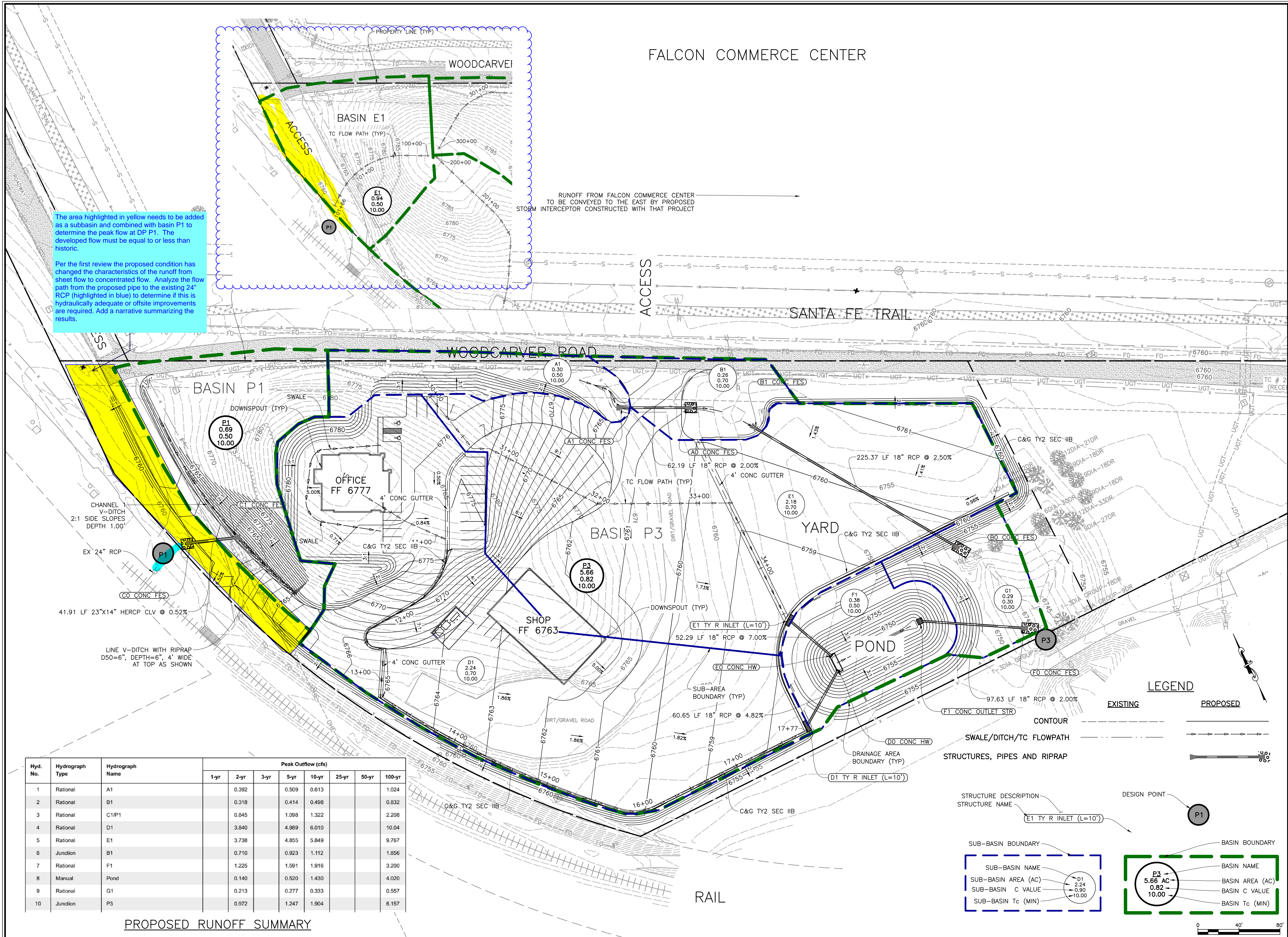


FALCON COMMERCE CENTER



The area highlighted in yellow needs to be added as a subbasin and combined with basin P1 to determine the peak flow at DP P1. The developed flow must be equal to or less than historic.

Per the first review the proposed condition has changed the characteristics of the runoff from sheet flow to concentrated flow. Analyze the flow path from the proposed pipe to the existing 24" RCP (highlighted in blue) to determine if this is hydraulically adequate or offsite improvements are required. Add a narrative summarizing the results.

RUNOFF FROM FALCON COMMERCE CENTER TO BE CONVEYED TO THE EAST BY PROPOSED STORM INTERCEPTOR CONSTRUCTED WITH THAT PROJECT

Hyd. No.	Hydrograph Type	Hydrograph Name	Peak Outflow (cfs)								
			1-yr	2-yr	3-yr	5-yr	10-yr	25-yr	50-yr	100-yr	
1	Rational	A1		0.392		0.509	0.613				1.024
2	Rational	B1		0.318		0.414	0.498				0.832
3	Rational	C1/P1		0.845		1.098	1.322				2.208
4	Rational	D1		3.840		4.989	6.010				10.04
5	Rational	E1		3.738		4.855	5.849				9.767
6	Junction	B1		0.710		0.923	1.112				1.856
7	Rational	F1		1.225		1.591	1.916				3.200
8	Manual	Pond		0.140		0.520	1.430				4.020
9	Rational	G1		0.213		0.277	0.333				0.557
10	Junction	P3		0.972		1.247	1.904				6.157

PROPOSED RUNOFF SUMMARY

**LEGEND**

EXISTING      PROPOSED

CONTOUR

SWALE/DITCH/TC FLOWPATH

STRUCTURES, PIPES AND RIPRAP

STRUCTURE DESCRIPTION  
 STRUCTURE NAME

DESIGN POINT

SUB-BASIN BOUNDARY

BASIN BOUNDARY

SUB-BASIN NAME  
 SUB-BASIN AREA (AC)  
 SUB-BASIN C VALUE  
 SUB-BASIN Tc (MIN)

BASIN NAME  
 BASIN AREA (AC)  
 BASIN C VALUE  
 BASIN Tc (MIN)

**NATIVE SUN CONSTRUCTION**  
 PUD PLAN  
 PROPOSED DRAINAGE MAP

REVISIONS:

SCALE:  
 NOTED  
 DATE:  
 MARCH 2021  
 PROJECT NO.:  
 21001

SHEET NO.:  
 PROPOSED DRAINAGE MAP