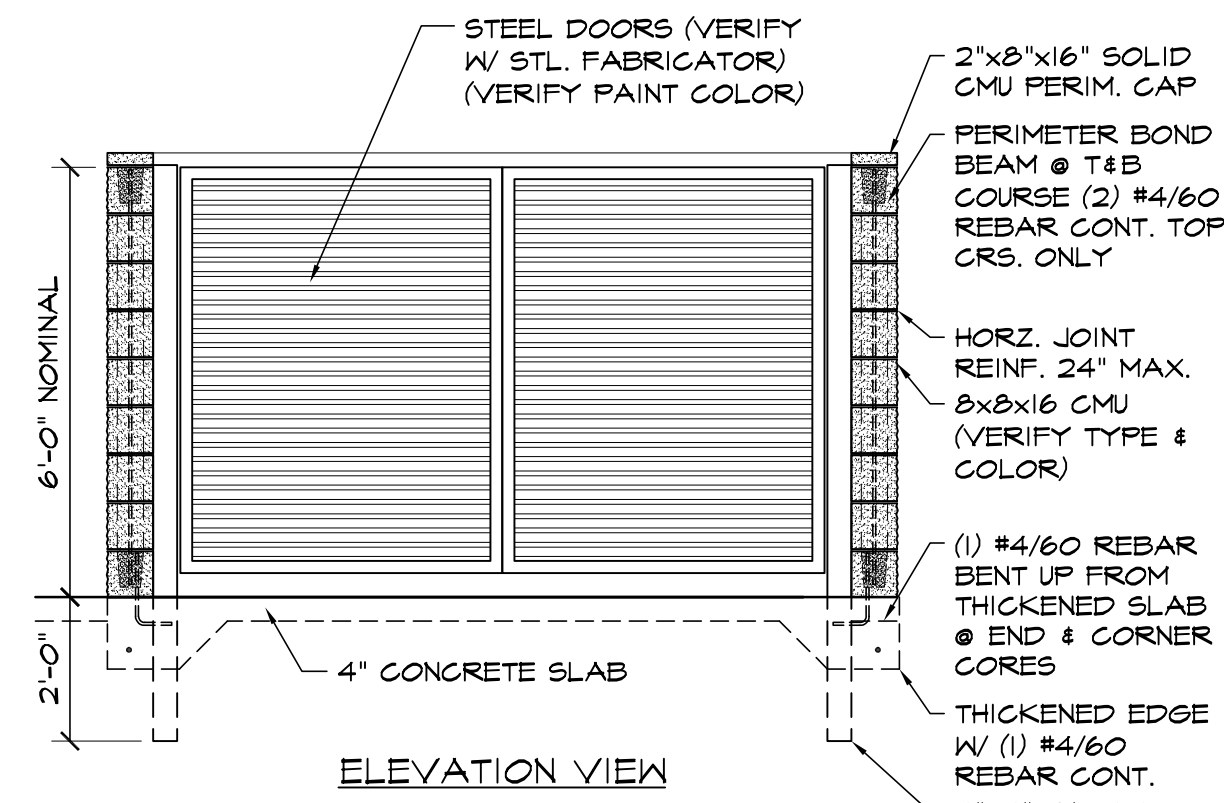


PLAN VIEW



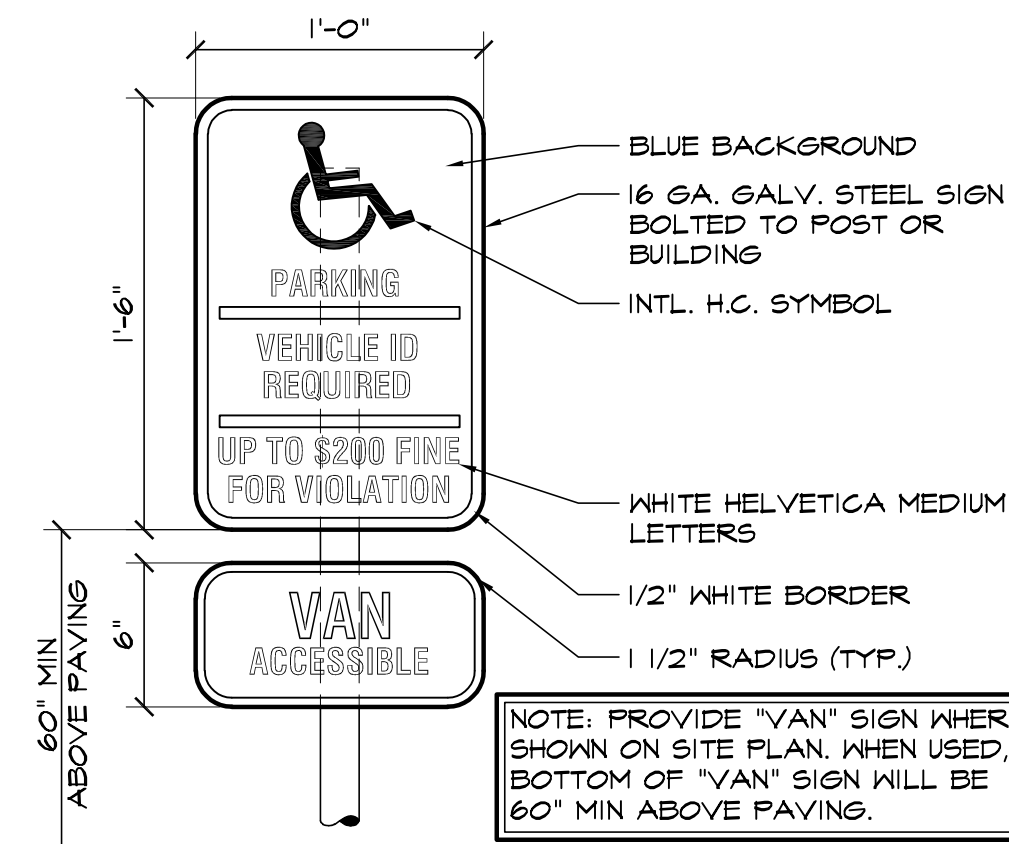
ELEVATION VIEW

NOTE: ENCLOSURE HEIGHT SHALL BE SUFFICIENT TO SCREEN THE HT OF THE DUMPSTER OR REFUSE CONTAINERS LOCATED INSIDE THE ENCLOSURE. USUALLY 8" TALLER THAN ITEMS TO BE SCREENED IS SUFFICIENT.

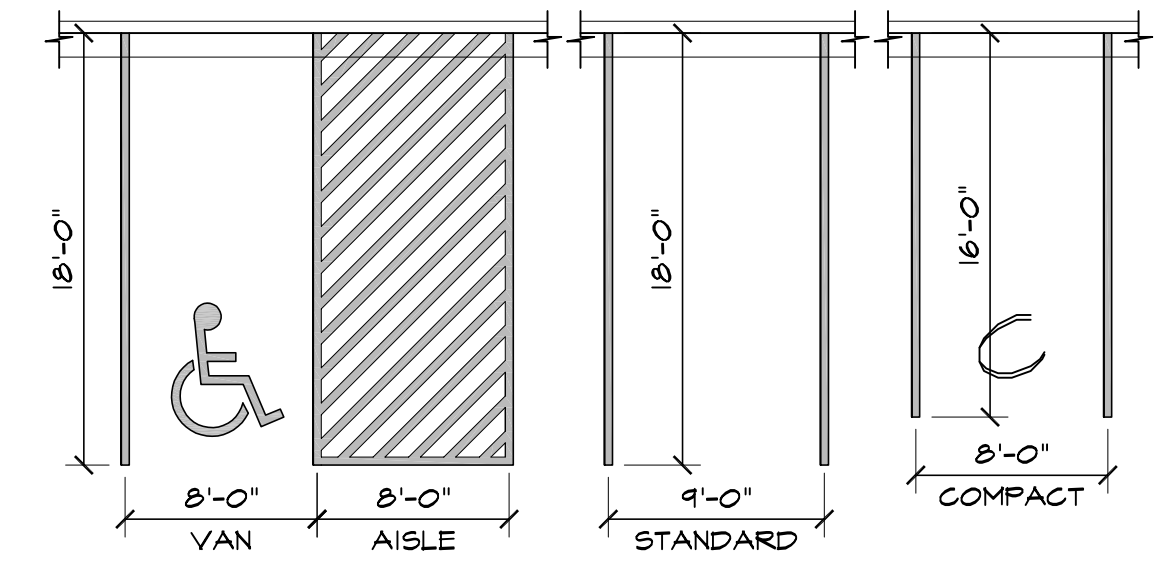
1 CMU TRASH ENCLOSURE DTL  
SCALE: 3/8"=1'-0"



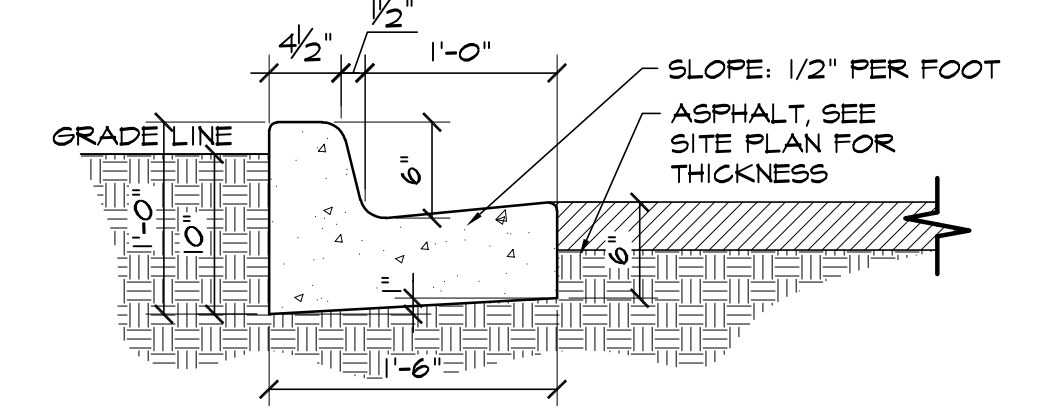
5 FIRE LANE SIGN  
SCALE: 1 1/2"=1'-0"



6 HANDICAPPED PARKING SIGN  
SCALE: 1 1/2"=1'-0"

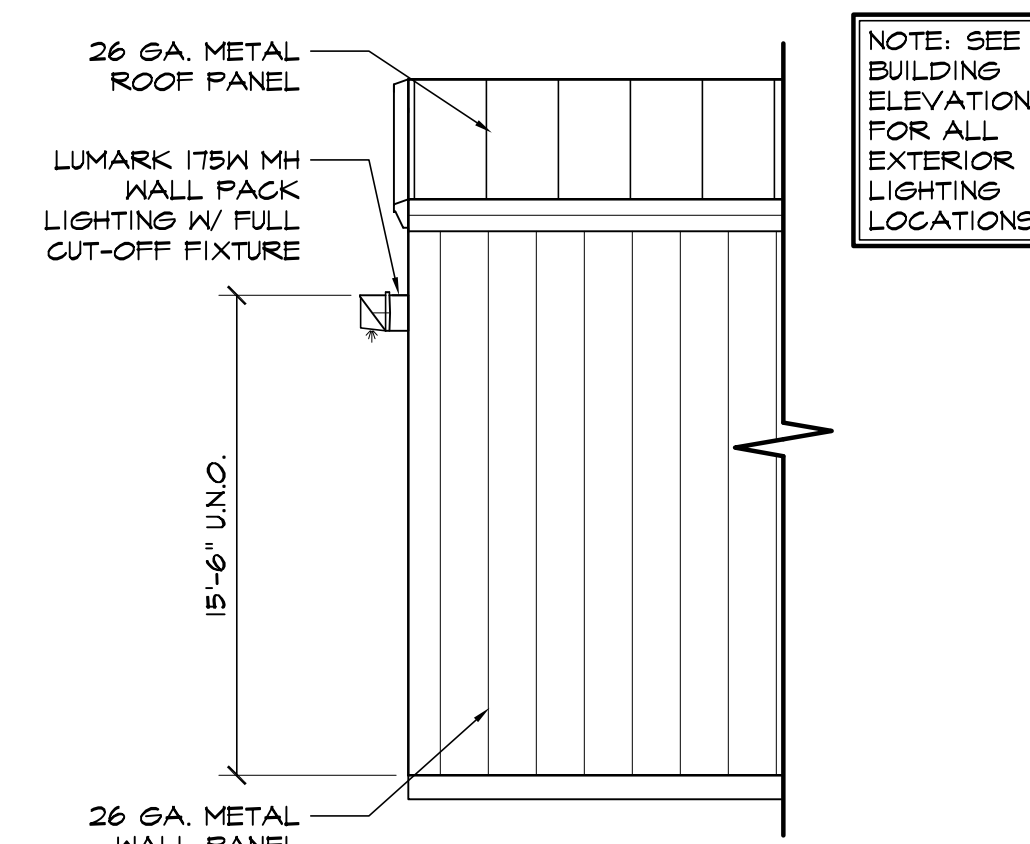


1 ADA / STANDARD PARKING  
SCALE: 1/8"=1'-0"



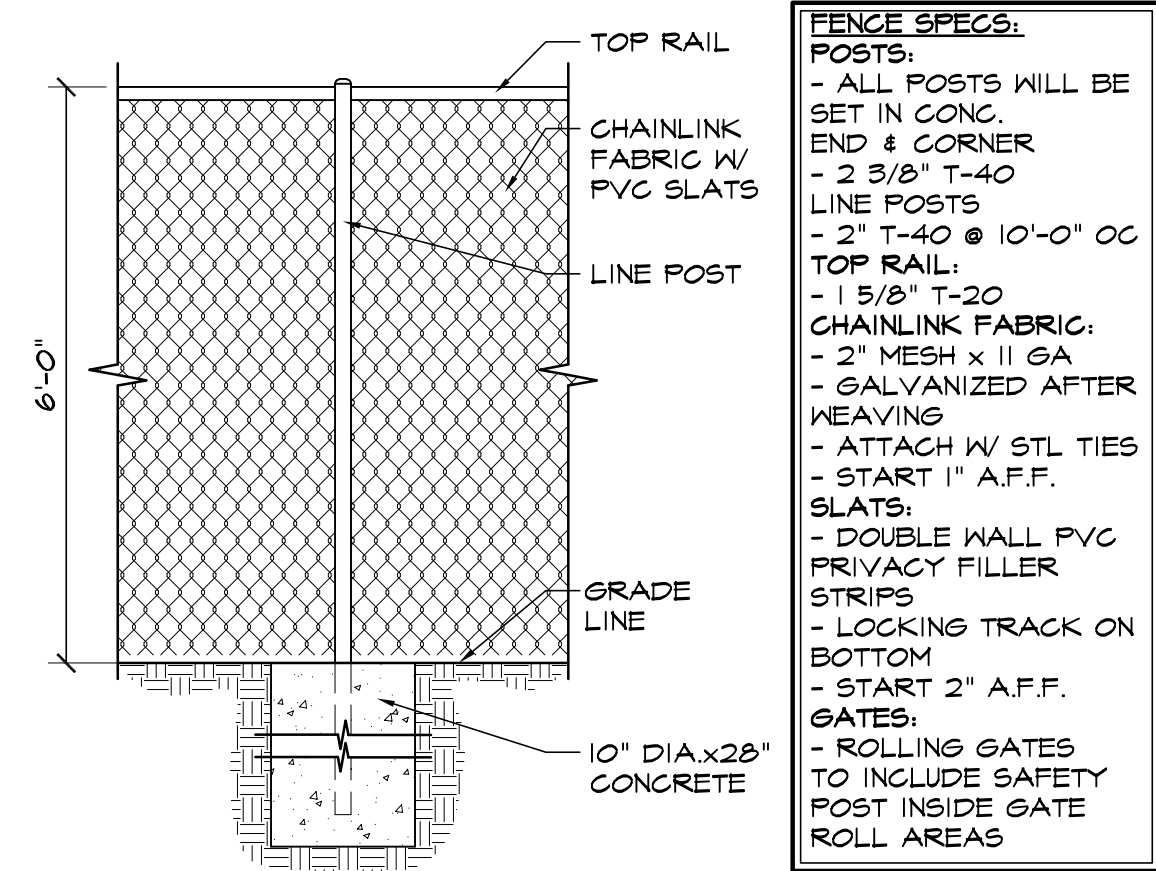
NOTE:  
- ALL INTERNAL CURB THIS TYPE UNLESS NOTED OTHERWISE.  
- SEE CIVIL PLANS FOR CARRY OR SPILL CURB LOCATIONS

2 EPC TYPE B CURB  
SCALE: 1"=1'-0"



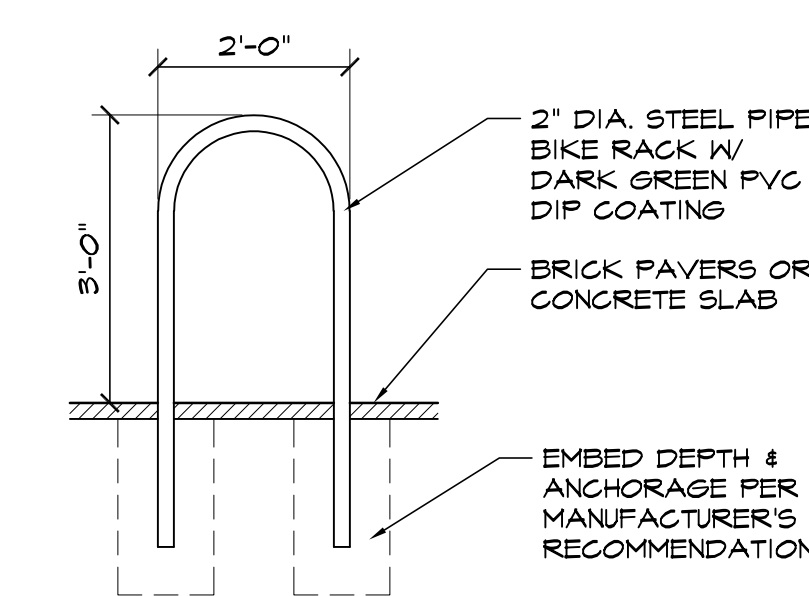
NOTE: SEE BUILDING ELEVATIONS FOR ALL EXTERIOR LIGHTING LOCATIONS

7 WALL PACK LIGHT DETAIL  
SCALE: 1/4"=1'-0"

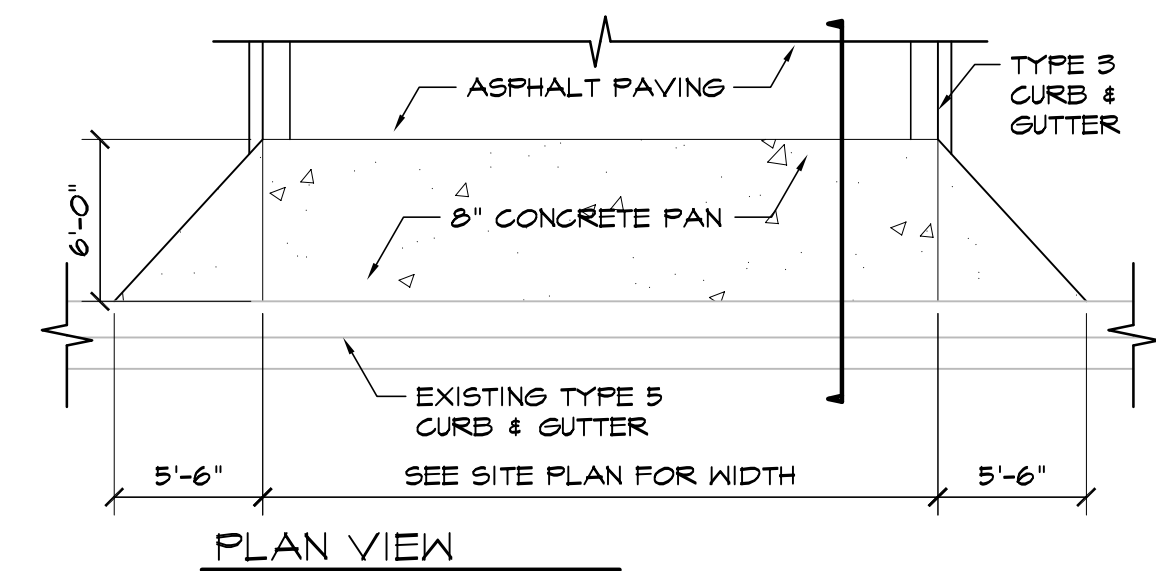


FENCE SPECS:  
- ALL POSTS WILL BE SET IN CONG.  
- 2 3/8" T-40 END & CORNER  
- 2 3/8" T-40 LINE POSTS  
- 2" T-40 @ 10'-0" OC  
TOP RAIL:  
- 1 5/8" T-20 CHAINLINK FABRIC  
- 2" MESH x 11 GA  
- GALVANIZED AFTER WEAVING  
- ATTACH W/ STL TIES  
- START 1" A.F.F.  
SLATS:  
- DOUBLE WALL PVC PRIVACY FILLER STRIPS  
- LOCKING TRACK ON BOTTOM  
- START 2" A.F.F.  
GATES:  
- ROLLING GATES TO INCLUDE SAFETY POST INSIDE GATE ROLL AREAS

3 CHAINLINK FENCE DETAIL  
SCALE: 1/2"=1'-0"



8 BIKE RACK DETAIL  
SCALE: 1/2"=1'-0"



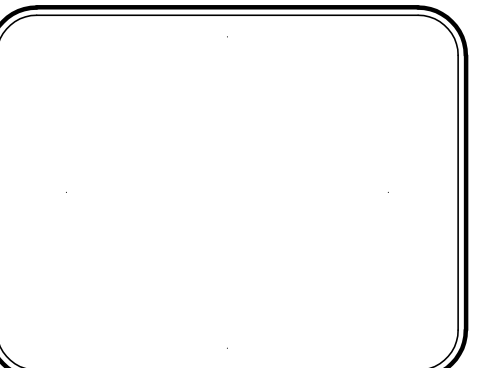
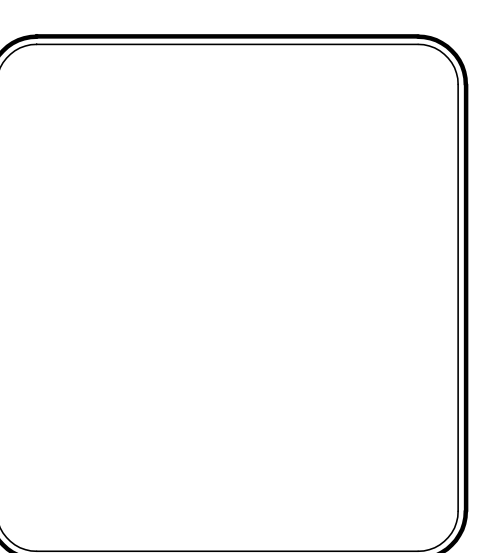
NOTE: REFER TO CITY STANDARD DETAIL D-16B FOR FURTHER DETAIL

4 DRIVEWAY DETAIL  
NOT TO SCALE

**HAMMERS CONSTRUCTION INC.**  
COMMERCIAL GENERAL CONTRACTORS SPECIALIZING IN DESIGN/BUILD  
PRESIDENT: STEVE R. HAMMERS  
VICE PRES: DAVID J. HAMMERS  
1411 WOOLSEY HEIGHTS  
COLORADO SPRINGS, CO 80915  
(719) 570-1599 FAX (719) 570-7008  
www.hammersconstruction.com

THIS DRAWING CONTAINS MATERIAL & INFORMATION WHICH MAY NOT BE REPRODUCED WITHOUT WRITTEN CONSENT OF HAMMERS CONSTRUCTION, INC. THESE DRAWINGS ARE INTENDED TO BE USED ONLY BY HAMMERS CONSTRUCTION & ITS REPRESENTATIVES. THESE DRAWINGS HAVE NOT BEEN PREPARED FOR ANY OTHER PURPOSE THAN TO INDICATE THE GENERAL FEATURES AND PLACEMENT OF THE PROPOSED PROJECT. COPYRIGHT © 2020 HAMMERS CONSTRUCTION

CBP 2,7-1  
1716 GARY WATSON POINT  
COLORADO SPRINGS, CO 80915  
EL PASO COUNTY, COLORADO



DATE: SEPT 14, 2020  
DRAWN BY: D. AQUINO  
PROJ. MGR: R. GREEN  
SCALE: SEE PLAN  
APPROVED BY:  
JOB NO: 1165



# Site Development Plan\_V1.pdf Markup Summary

---

## Cloud+ (1)

---



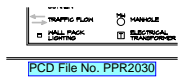
**Subject:** Cloud+  
**Page Label:** 1  
**Author:** John Green  
**Date:** 10/15/2020 12:21:18 PM  
**Status:**  
**Color:** ■  
**Layer:**  
**Space:**

Access Aisle must be located on passenger side of parking spaces. Revise with access aisle on passenger side

---

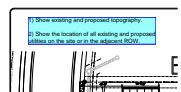
## Engineer (4)

---



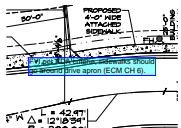
**Subject:** Engineer  
**Page Label:** 1  
**Author:** JPatton  
**Date:** 10/12/2020 10:30:00 AM  
**Status:**  
**Color:** ■  
**Layer:**  
**Space:**

PCD File No. PPR2030



**Subject:** Engineer  
**Page Label:** 1  
**Author:** JPatton  
**Date:** 10/12/2020 9:53:40 AM  
**Status:**  
**Color:** ■  
**Layer:**  
**Space:**

- 1) Show existing and proposed topography.
- 2) Show the location of all existing and proposed utilities on the site or in the adjacent ROW.



**Subject:** Engineer  
**Page Label:** 1  
**Author:** JPatton  
**Date:** 10/15/2020 12:39:58 PM  
**Status:**  
**Color:** ■  
**Layer:**  
**Space:**

FYI per ADA criteria, sidewalks should go around drive apron (ECM CH 6).



**Subject:** Engineer  
**Page Label:** 1  
**Author:** dsdnijkamp  
**Date:** 10/15/2020 12:40:08 PM  
**Status:**  
**Color:** ■  
**Layer:**  
**Space:**

to include all easements.