



1
A2.0
FRONT PERSPECTIVE
N.T.S.

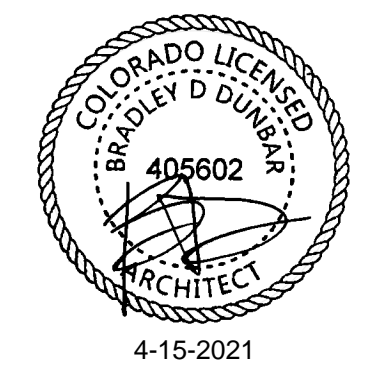


2
A2.0
FRONT PERSPECTIVE @ SERVICE BAYS
N.T.S.



3
A2.0
SITE AERIAL VIEW
N.T.S.

7105 OLD MERIDIAN RD.
FALCON, CO
LES SCHWAB TIRE CENTER



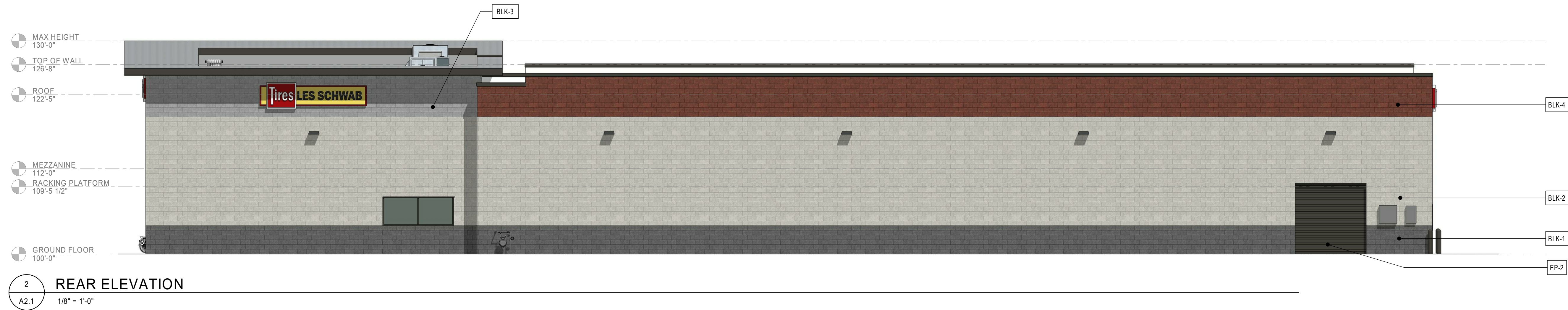
© 2021 | ALL RIGHTS RESERVED

SITE DEVELOPMENT
PLANS

04.16.2021
DRAWN BY | JONES
REVISIONS

EXTERIOR VIEWS

A2.0



ELEVATION GENERAL NOTES:

- A. ANY SIGNAGE DEPICTED ON ELEVATIONS IS TO BE PERMITTED SEPARATELY, BY OWNER.
B. ALL VERTICAL DIMENSIONS SHOWN ARE FROM FINISH FLOOR.
C. REF CIVIL AND STRUCTURAL DRAWINGS FOR GRADE CHANGES AND RETAINING WALL DIMENSIONS AND LOCATIONS.
D. CONNECT ALL ROOF DRAINS AND DOWNSPOUTS TO SUBGRADE DRAINAGE SYSTEM. REF CIVIL DRAWINGS.
E. COORDINATE WITH SIGNAGE PLANS REQUIRED STRUCTURAL BACKING IN CMU AND REQUIRED ELECTRICAL ROUGH-IN LOCATIONS.
F. VERIFY LOCAL FIRE DEPARTMENT REQUIREMENTS FOR ADDRESS NUMBER LOCATION.

MATERIAL LEGEND:

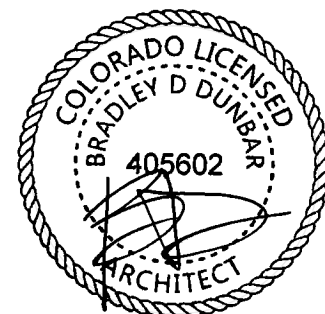
- BLK-1 ANGELUS CMU SPLIT FACE, (ONYX)
BLK-2 ANGELUS CMU SPLIT BURNISHED, (MISSION WHITE)
BLK-3 ANGELUS CMU PRECISION, (GREYSTONE)
BLK-4 ANGELUS CMU SPLIT FACE, (LANERA RED)
SP-1 SOFFIT PANEL 6" V-GROOVE PLANKS (WHITE OAK NATURAL)
SF-1 SITE FURNISHINGS IN DARK BRONZE, TRASH RECEPTACLE AND BENCH
EP-2 EXTERIOR PAINT TYPE-2 (MATCH VALSPAR 397B792 FLUOROPON EXTRA DARK BRONZE)

Cushing
Terrell

cushingterrell.com
800.757.9522



7105 OLD MERIDIAN RD.
FALCON, CO
LES SCHWAB TIRE CENTER



© 2021 | ALL RIGHTS RESERVED

SITE DEVELOPMENT
PLANS

04.16.2021

DRAWN BY | CEN
REVISIONS

EXTERIOR
ELEVATIONS

A2.1