

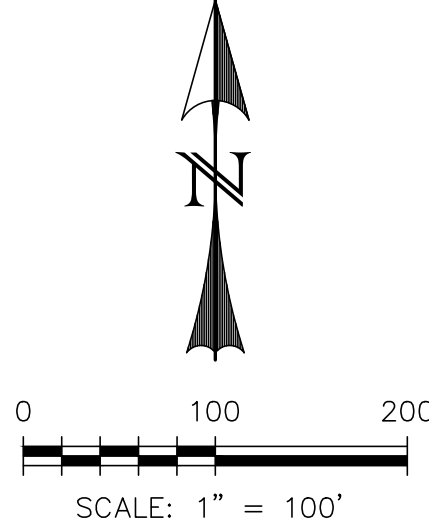
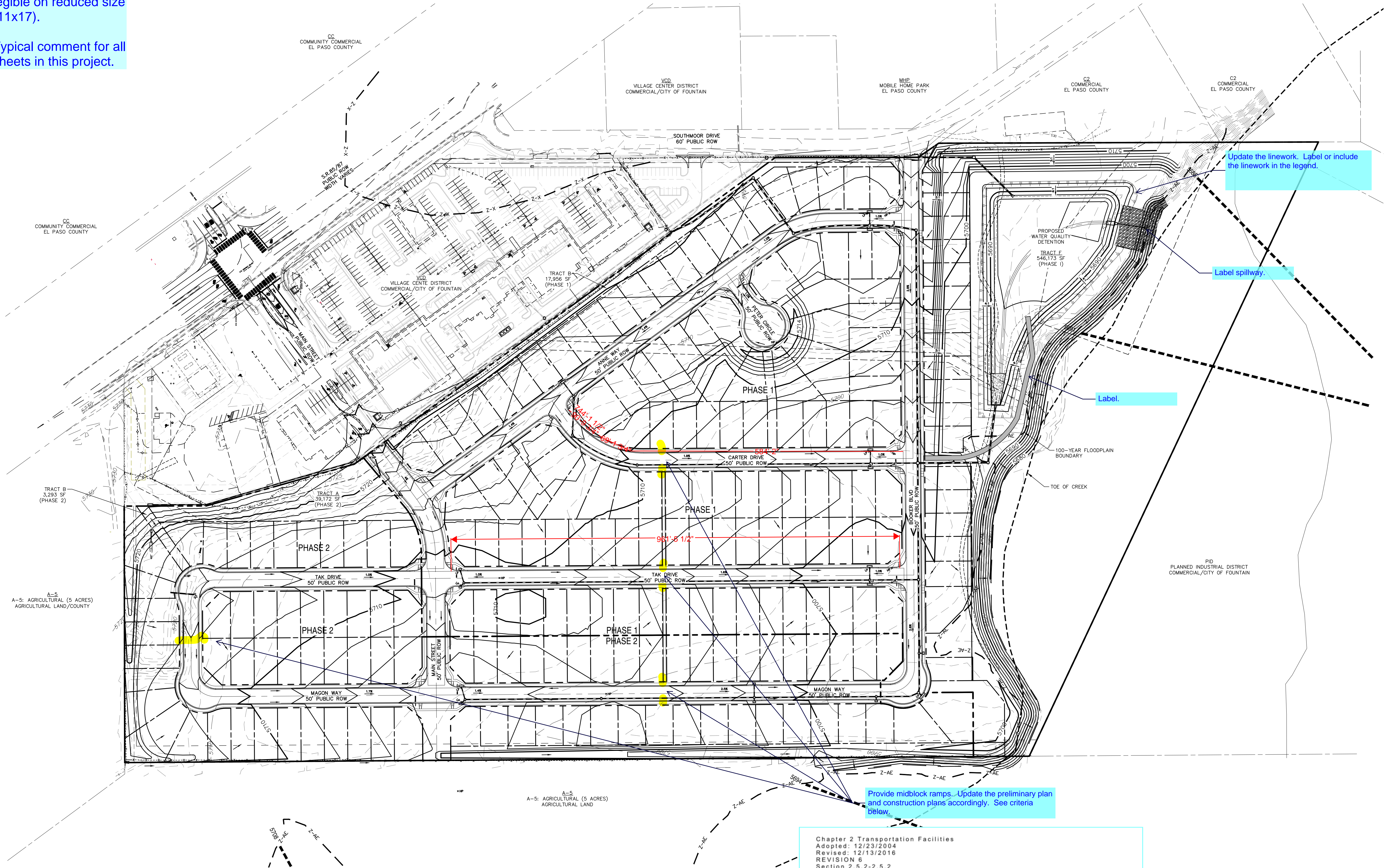






Increase text size to be legible on reduced size (11x17).

Typical comment for all sheets in this project.



Provide midblock ramps. Update the preliminary plan and construction plans accordingly. See criteria below.

Chapter 2 Transportation Facilities  
Adopted: 12/23/2004  
Revised: 12/13/2016  
REVISION 6  
Section 2.5.2-2.5.2

**4. Mid-Block Ramps on Local Roadways**  
Access ramps on local roadways shall be spaced no greater than 600 feet apart. Where spacing is greater than 600 feet, mid-block access ramps shall be provided at spacings that minimize travel distances between access ramps. Private accesses may be used for these access points where the access is designed to meet access ramp requirements. The pavement markings and signing required by the ECM and MUTCD shall be provided for mid-block access ramps.

REV.	DESCRIPTION	DATE



Know what's below.  
Call 72 hours before you dig.  
For more details visit:  
www.call811.com

PREPARED FOR:  
**AVATAR EQUITIES**  
6800 JERICHO TURNPIKE  
SUITE 120W #204  
SYOSSET, NY 11791



CATAMOUNT  
ENGINEERING  
321 W. HENRIETTA AVE  
PO BOX 221  
WOODLAND PARK, CO 80869  
(719) 428-2124

**RIVERBEND RESIDENTIAL  
DEVELOPMENT**  
**PRELIMINARY GRADING PLAN**

DESIGNED BY:	DLM	DRAWN BY:	DBM
SCALE:	1" = 100'	DATE:	01/29/20
JOB NUMBER	17-114	SHEET	3 OF 3

COUNTY FILE NUMBER: PCD File No. SP187