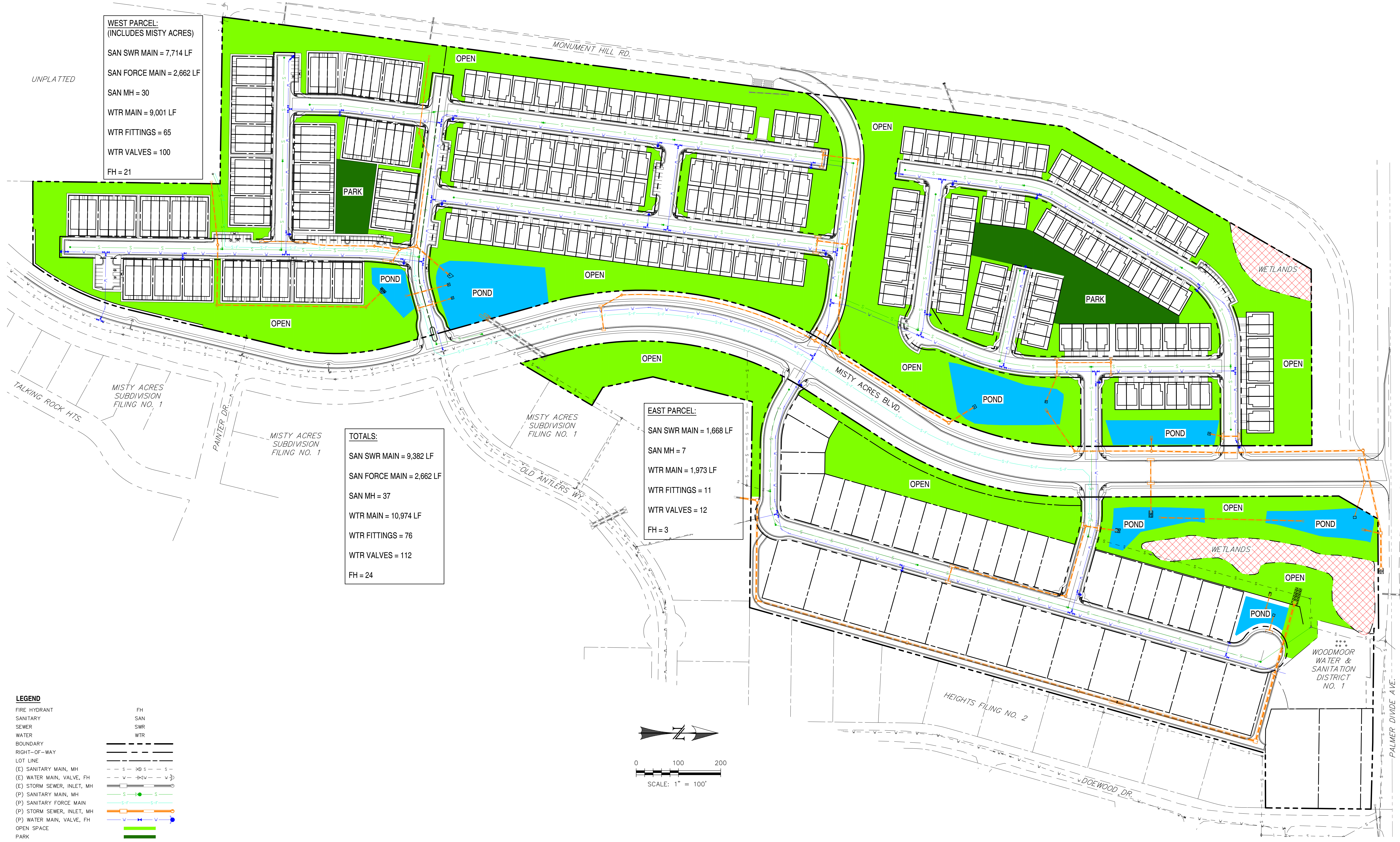


WEST PARCEL:
(INCLUDES MISTY ACRES)

SAN SWR MAIN = 7,714 LF
 SAN FORCE MAIN = 2,662 LF
 SAN MH = 30
 WTR MAIN = 9,001 LF
 WTR FITTINGS = 65
 WTR VALVES = 100
 FH = 21

UNPLATTED



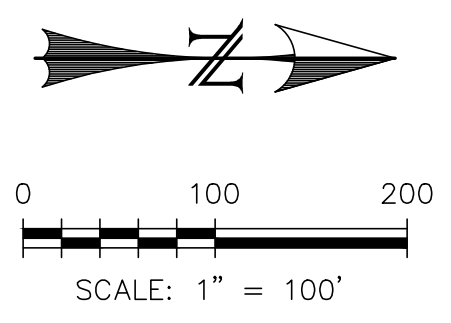
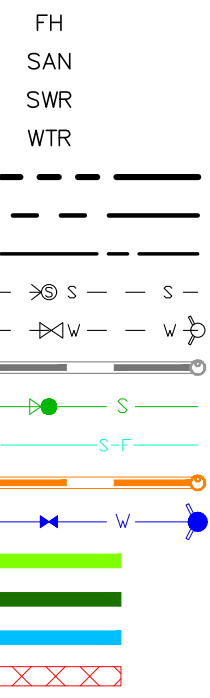
TOTALS:

SAN SWR MAIN = 9,382 LF
 SAN FORCE MAIN = 2,662 LF
 SAN MH = 37
 WTR MAIN = 10,974 LF
 WTR FITTINGS = 76
 WTR VALVES = 112
 FH = 24

EAST PARCEL:

SAN SWR MAIN = 1,668 LF
 SAN MH = 7
 WTR MAIN = 1,973 LF
 WTR FITTINGS = 11
 WTR VALVES = 12
 FH = 3

- LEGEND**
- FIRE HYDRANT
 - SANITARY
 - SEWER
 - WATER
 - BOUNDARY
 - RIGHT-OF-WAY
 - LOT LINE
 - (E) SANITARY MAIN, MH
 - (E) WATER MAIN, VALVE, FH
 - (E) STORM SEWER, INLET, MH
 - (P) SANITARY MAIN, MH
 - (P) SANITARY FORCE MAIN
 - (P) STORM SEWER, INLET, MH
 - (P) WATER MAIN, VALVE, FH
 - OPEN SPACE
 - PARK
 - POND
 - WETLANDS

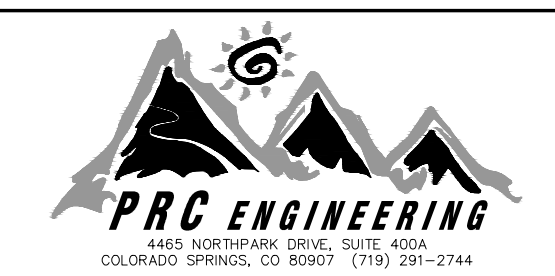


REV.	DESCRIPTION	DATE



PREPARED FOR:
IN-HOUSE REVIEW

NOT FOR CONSTRUCTION



DESIGNED BY: MGP
 DRAWN BY: MGP
 SCALE: 1" = 100'
 DATE: 06/17/24
 JOB NUMBER: 21-003
 SHEET: 1 OF 1

MONUMENT RIDGE EAST
 EAST & WEST
 LAYOUT EXHIBIT