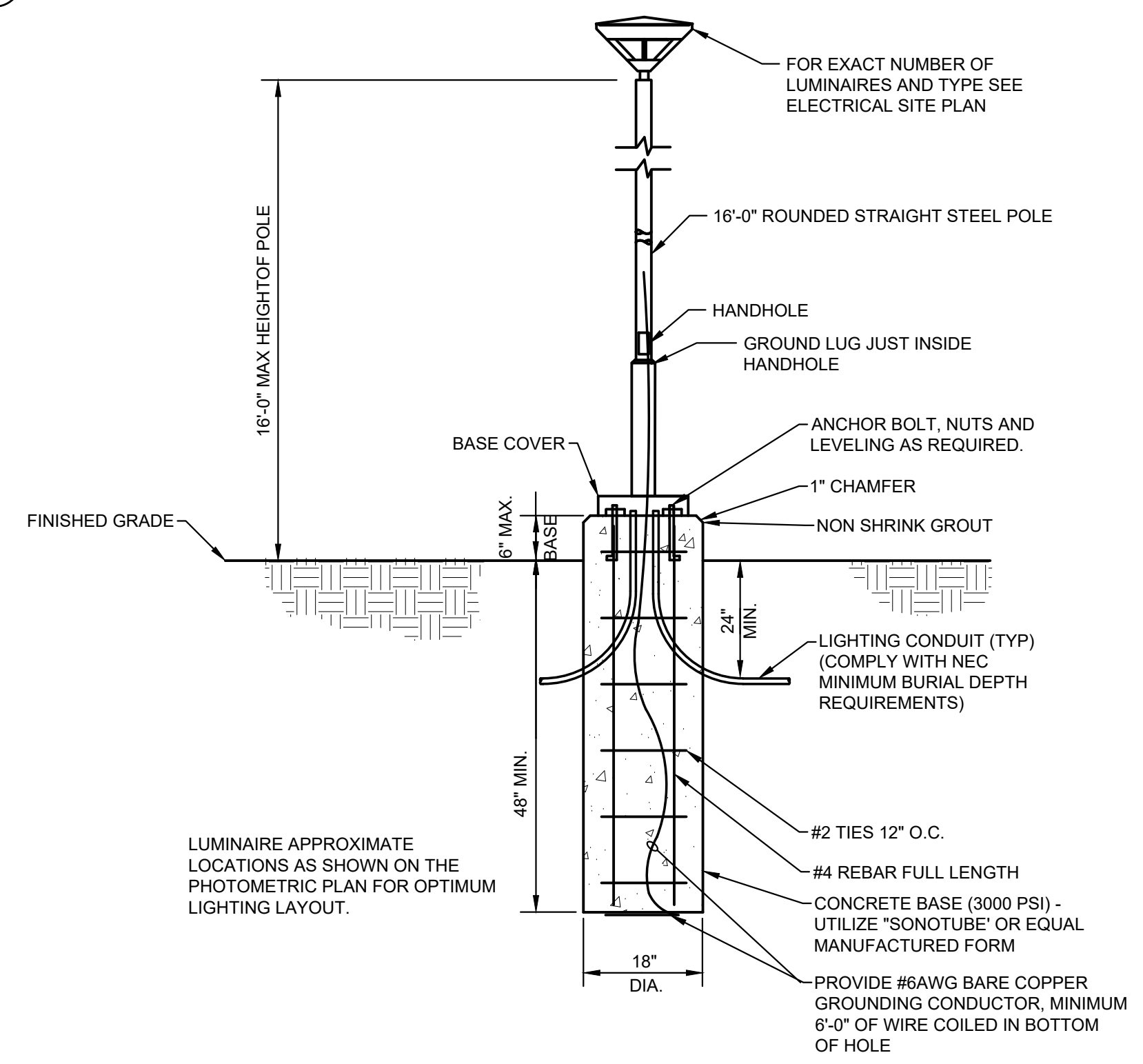
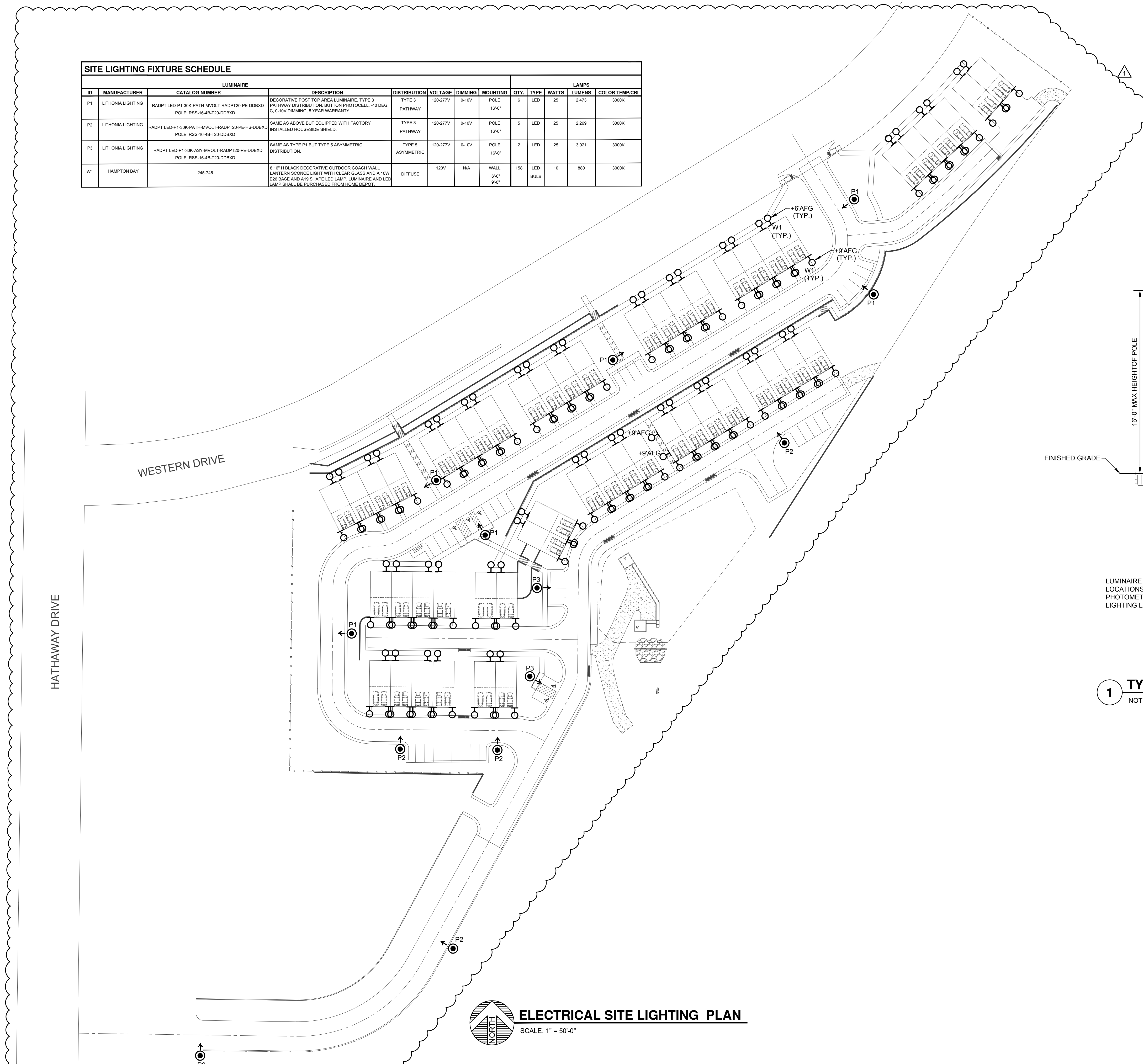


SITE LIGHTING FIXTURE SCHEDULE													
ID	MANUFACTURER	CATALOG NUMBER	LUMINAIRE			DISTRIBUTION	VOLTAGE	DIMMING	MOUNTING	QTY	LAMPS		
			DESCRIPTION	TYPE	WATTS						LUMENS	COLOR TEMP./CRI	
P1	LITHONIA LIGHTING	RADPT LED-P1-30K-PATH-MVOLT-RADPT20-PE-DBXKD POLE: RSS-16-4B-T20-DBXKD	DECORATIVE POST TOP AREA LUMINAIRE, TYPE 3 PATHWAY DISTRIBUTION, BUTTON PHOTOCELL, 40 DEG. C, 0-10V DIMMING, 5 YEAR WARRANTY.	TYPE 3 PATHWAY	120-277V	0-10V	POLE 16'-0"	6	LED	25	2,473	3000K	
P2	LITHONIA LIGHTING	RADPT LED-P1-30K-PATH-MVOLT-RADPT20-PE-DBXKD POLE: RSS-16-4B-T20-DBXKD	SAME AS ABOVE BUT EQUIPPED WITH FACTORY INSTALLED HOUSESIDE SHIELD.	TYPE 3 PATHWAY	120-277V	0-10V	POLE 16'-0"	5	LED	25	2,269	3000K	
P3	LITHONIA LIGHTING	RADPT LED-P1-30K-ASY-MVOLT-RADPT20-PE-DBXKD POLE: RSS-16-4B-T20-DBXKD	SAME AS TYPE P1 BUT TYPE 5 ASYMMETRIC DISTRIBUTION.	TYPE 5 ASYMMETRIC	120-277V	0-10V	POLE 16'-0"	2	LED	25	3,021	3000K	
W1	HAMPTON BAY	245-746	8'18" H BLACK DECORATIVE OUTDOOR COACH WALL LANTERN SOURCE LIGHT WITH CLEAR GLASS AND A 10W E26 BASE AND A19 SHAPE LED LAMP. LUMINAIRE AND LED LAMP SHALL BE PURCHASED FROM HOME DEPOT.	DIFFUSE	120V	N/A	WALL 6'-0" 9'-0"	158	LED BULB	10	880	3000K	

KEYED NOTES
 ① NOT USED.



1 TYPICAL FIXTURE TYPE P1,P2,P3 POLE BASE DETAIL
 NOT TO SCALE



REVISIONS	MARK	DATE	COMMENT
1	△	09/18/2023	COORDINATION SET
2	△	05/23/2024	CITY REVIEW COMMENTS

SHEET TITLE
ELECTRICAL SITE DEVELOPMENT PLAN

PROJECT	23080
DATE	05/23/2024
DRAWN	CAO
CHECKED	MP

DP1

5/23/2024 10:30:04 AM odspjhe.evs@colorado.com
 C:\projects\2023\23080\721_western_drive_townhomes_sit.dwg
 05/14 drawings\4-3_electrical\4-3_electrical\23080_dp1.dwg

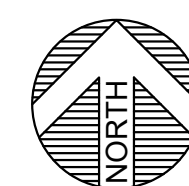
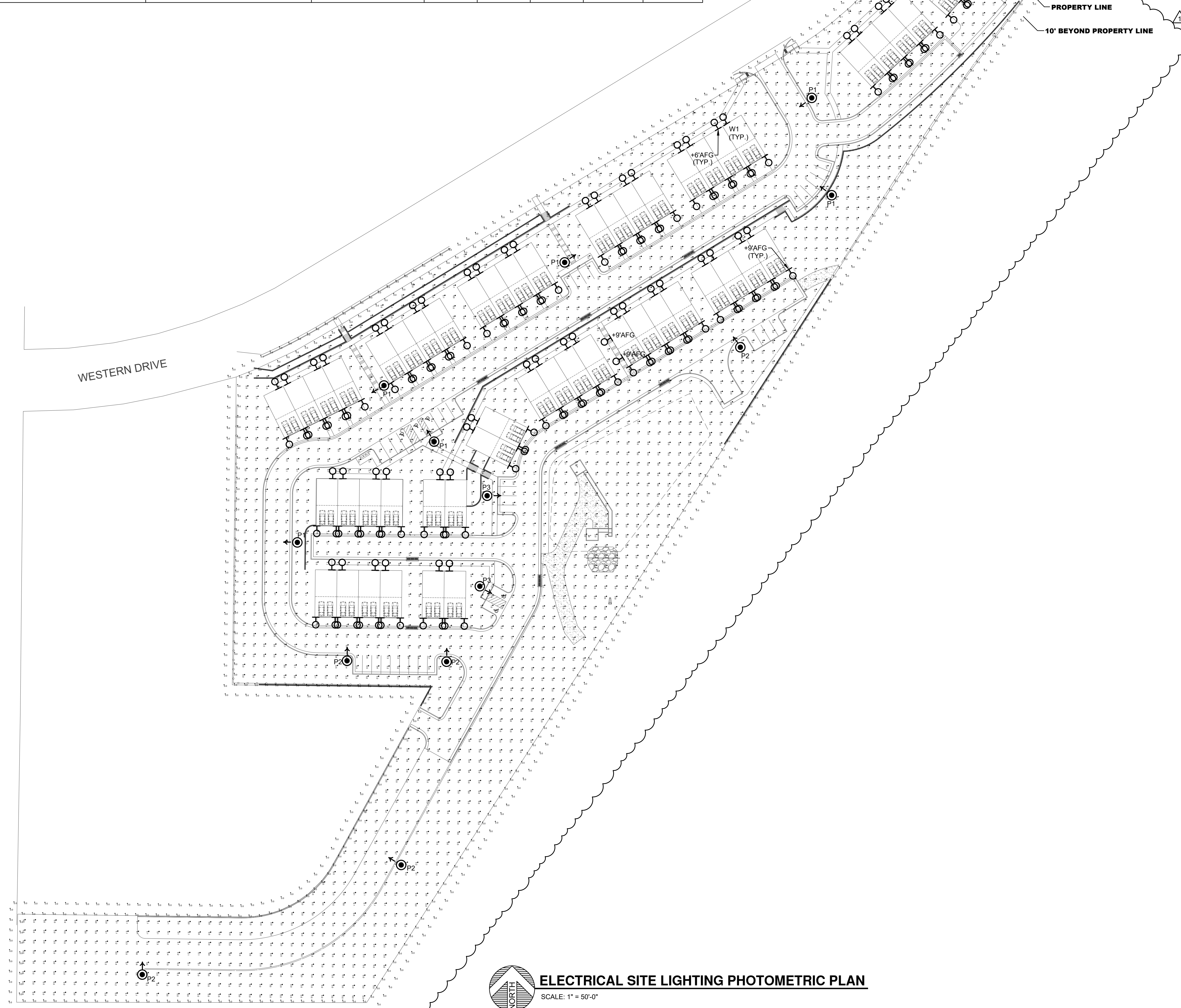
Calculation Summary							
Label	CalcType	Units	Avg	Max	Min	Avg/Min	Max/Min
10' Beyond Property Line	Illuminance	Fc	0.00	0.1	0.0	N.A.	N.A.
Property Line	Illuminance	Fc	0.01	0.1	0.0	N.A.	N.A.
Site	Illuminance	Fc	0.29	3.0	0.0	N.A.	N.A.

GENERAL NOTES

- A. CONTRACTOR SHALL VERIFY ALL UTILITY LOCATIONS PRIOR TO ANY EXCAVATION. NOT ALL EXISTING CONDITIONS ARE SHOWN FOR CLARITY.
- B. CONTRACTOR SHALL PROVIDE ALL REQUIRED CUTTING, TRENCHING, BACKFILLING, AND RESTORATION.
- C. THESE PHOTOMETRIC CALCULATIONS ARE BASED ON MANUFACTURER'S IES FILES AND 0.85 LIGHT DEPRECIATION FACTOR.
- D. ACTUAL ILLUMINANCE LEVELS MAY DIFFER FROM THE FOOT CANDLE LEVELS SHOWN DUE TO VARIABLE FIELD CONDITIONS, SUCH AS NEARBY EXISTING LUMINAIRES, LUMINAIRE DIRT DEPRECIATION, LANDSCAPING, AND FUTURE DEVELOPMENTS.

HATHAWAY DRIVE

WESTERN DRIVE



ELECTRICAL SITE LIGHTING PHOTOMETRIC PLAN

SCALE: 1" = 50'-0"

PLANT
ENGINEERING CONSULTANTS
320 WEST FILLMORE STREET COLORADO SPRINGS CO 80907
719.473.7077
www.plantec.com



721 WESTERN DR. TOWNHOMES
SITE DEVELOPMENT PLAN PHOTOMETRY
721 WESTERN DRIVE, COLORADO SPRINGS, CO 80915

REVISIONS	MARK	DATE	COMMENT
	△	09/18/2023	COORDINATION SET
	△	05/23/2024	CITY REVIEW COMMENTS

SHEET TITLE
**DEVELOPMENTAL
SITE
PHOTOMETRIC
PLAN**

© COPYRIGHT 2024 ALL DRAWN & WRITTEN INFORMATION APPEARING HEREIN SHALL NOT BE DUPLICATED, DISCLOSED OR OTHERWISE USED WITHOUT WRITTEN CONSENT OF PLANT ENGINEERING CONSULTANTS.

PROJECT	23080
DATE	05/23/2024
DRAWN	CAO
CHECKED	MP

SHEET
DP2

5/23/2024 10:30:06 AM odglobe.electrical
C:\projects\2023\23080\721_western_drive_townhomes_sit_e_dp2.dwg
electrical\23080_dp2.dwg



Radean Post Top LED Area Luminaire



Catalog Number

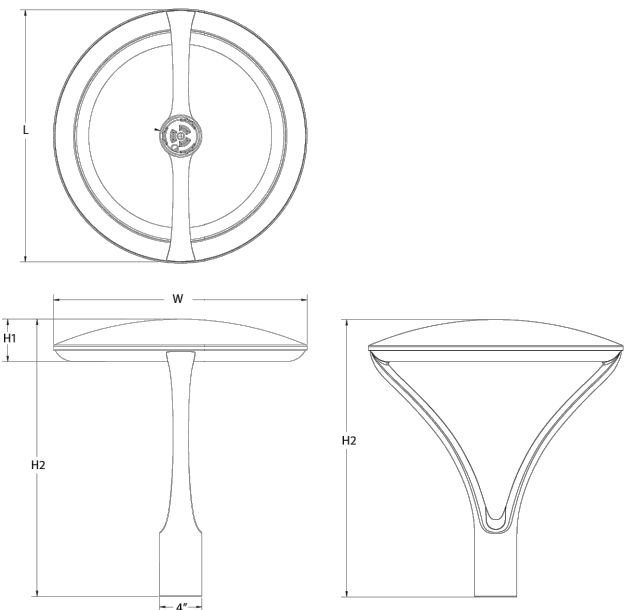
Notes

Type P1,P2,P3

Hit the Tab key or mouse over the page to see all interactive elements.

Specifications

EPA: 1.02 ft² (0.105 m²)
Length: 24" (61cm)
Width: 24" (61cm)
H1 Luminaire Height: 4" (10.16cm)
H2 Luminaire Height: 26" (66.04cm)
Weight: 28lbs (17.24kg)



Introduction

The architecturally-inspired shape of the RADEAN™ post top area luminaire embodies the grace and strength of the RADEAN family. The twin copper-core cast aluminum arms support the slender superstructure, creating a beautiful sculpture by day transforming into a beacon of comfort by night. Triangular arms redirect reflection maintaining its visually quiet appearance. With sleek lines and simple silhouettes, these LED luminaires use specialized lighting and visual comfort to transform common areas like courtyards, outdoor retail locations, universities and corporate campuses into pedestrian-friendly nighttime environments.

Ordering Information

EXAMPLE: RADPT LED P3 30K SYM MVOLT P4 PE DNAXD

Series	Performance package	Color temperature	Distribution	Voltage	Mounting required
RADPT LED	P1 3,000 Lumens	27K 2700K	SYM Symmetric type V	MVOLT 277V	PT4*
	P2 5,000 Lumens	30K 3000K	ASY Asymmetric type IV	120V 347	RADPT25 Slips over a 4" tall metal pole
	P3 7,000 Lumens	35K 3500K	PATH Pathway type III	208V 480	RADPT25 Slips over a 3/8" diameter tenon (4" tall tenon required)
	P4 10,000 Lumens	40K 4000K		240V	
	P5 15,000 Lumens	50K 5000K			

Control options	Other options	Finish options
Shipped installed	SF Single fuse*	Dark bronze
NLNRZ Night on 2.0 enabled*	DF Double fuse*	Black
PE Button photocell*	RO Rotated optics*	Natural aluminum
FAO Field adjustable output*		White

Performance Data

Lumen Output
 Lumen values are from photometric tests performed in accordance with IESNA LM-79-08. Data is considered to be representative of the configurations shown. Contact factory for performance data on any configurations not shown here.

Performance Package	Input Watts	Distribution	2700K						3500K						4000K												
			Lumens	U	U0	U1	U2	U3	Lumens	U	U0	U1	U2	U3	Lumens	U	U0	U1	U2	U3							
P1	25	ASY	3,024	2	1	1	116	3,022	3	2	2	119	3,095	2	2	121	3,168	3	2	2	125	3,248	3	2	2	128	
		PNH	3,520	2	1	2	100	2,613	2	2	2	103	2,676	2	2	2	105	2,739	2	2	2	106	2,779	2	2	2	108
		SYM	3,086	2	1	1	121	3,189	2	1	1	126	3,266	2	1	1	129	3,344	2	1	1	132	3,444	2	1	1	132
P2	38	ASY	4,521	3	2	3	119	4,672	3	2	3	123	4,785	3	2	3	126	4,898	3	2	3	129	4,988	3	2	3	129
		PNH	3,909	2	2	2	103	4,940	2	2	2	106	4,137	2	2	2	109	4,235	3	2	3	111	4,235	3	2	3	111
		SYM	4,772	2	2	1	126	4,931	3	2	1	130	5,050	3	2	1	133	5,169	3	2	1	136	5,249	3	2	1	136
P3	54	ASY	6,387	3	2	3	119	6,600	3	2	3	123	6,760	3	2	3	126	6,919	3	2	3	129	6,919	3	2	3	129
		PNH	5,523	3	2	3	103	5,707	3	2	3	106	5,845	3	2	3	109	5,983	3	2	3	112	5,983	3	2	3	112
		SYM	6,741	3	2	2	126	6,966	3	2	2	130	7,150	3	2	2	133	7,303	3	2	2	136	7,263	3	2	2	136
P4	86	ASY	10,150	4	2	4	116	10,489	4	2	4	122	10,742	4	2	4	125	10,996	4	2	4	128	10,996	4	2	4	128
		PNH	8,777	3	2	3	102	9,678	3	2	3	106	9,291	3	2	3	108	9,559	3	2	3	111	9,500	3	2	3	111
		SYM	10,713	3	2	2	125	11,071	3	2	2	129	11,338	3	2	2	132	11,606	3	2	2	135	11,606	3	2	2	135
P5	133	ASY	14,250	4	2	4	116	14,724	4	2	4	120	15,081	4	3	4	123	15,437	4	3	4	126	15,437	4	3	4	126
		PNH	12,322	4	2	4	101	12,733	4	3	4	104	13,041	4	3	4	106	13,349	4	3	4	109	13,349	4	3	4	109
		SYM	15,040	4	2	3	123	15,541	4	2	3	127	15,917	4	2	3	130	16,293	4	2	3	133	16,293	4	2	3	133

Lumen Ambient Temperature (LAT) Multipliers

Ambient	Lat Factor
9°C	1.00
32°F	1.00
5°C	1.05
41°F	1.05
10°C	1.04
50°F	1.04
15°C	1.03
59°F	1.03
20°C	1.01
68°F	1.01
25°C	0.99
77°F	0.99
30°C	0.97
86°F	0.97
35°C	0.94
95°F	0.94
40°C	0.91
104°F	0.91

Projected LED Lumen Maintenance

Data references the extrapolated performance projections for the RADPT LED perform in a 25°C ambient, based on 10,000 hours of LED testing (tested per IESNA LM-80-08 and projected per IESNA TM-21-15).

To calculate LLE use the Lumen maintenance factor that corresponds to the desired number of operating hours below. For other lumen maintenance values, contact factory.

Operating Hours	Lumen Maintenance Factor			
0	25,000	100,000		
P1	1.00	0.96	0.91	0.82
P2	1.00	0.96	0.91	0.82
P3	1.00	0.96	0.91	0.82
P4	1.00	0.96	0.91	0.82
P5	1.00	0.95	0.89	0.78

Electrical Load

Lumen Package	LED Input Current	Voltage	Wattage	Summed (A)						
				130	208	240	277	347	480	
P1	500	42.8	21.4	Input Current	0.22	0.13	0.11	0.1	0.08	0.06
				System Watts	26	26	26	27	25	26
P2	770	43	33.1	Input Current	0.33	0.19	0.16	0.14	0.11	0.08
				System Watts	39	39	39	39	38	38
P3	1100	43.2	47.5	Input Current	0.46	0.26	0.23	0.2	0.16	0.12
				System Watts	55	54	54	54	54	54
P4	900	87.3	76.6	Input Current	0.73	0.42	0.36	0.32	0.25	0.18
				System Watts	87	86	86	86	86	86
P5	1320	88.2	110.2	Input Current	1	0.58	0.5	0.44	0.35	0.25
				System Watts	120	119	119	119	120	120

Ordering Information

Accessories

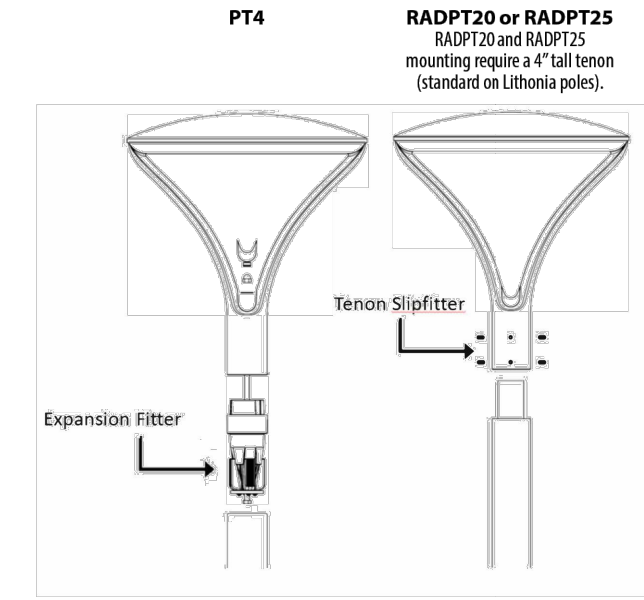
M605 Round-shield (black & white)

M605 D600 Double combi-lens for 4" pole (black & white)

M605 D600 Full cover for 4" pole (black & white)

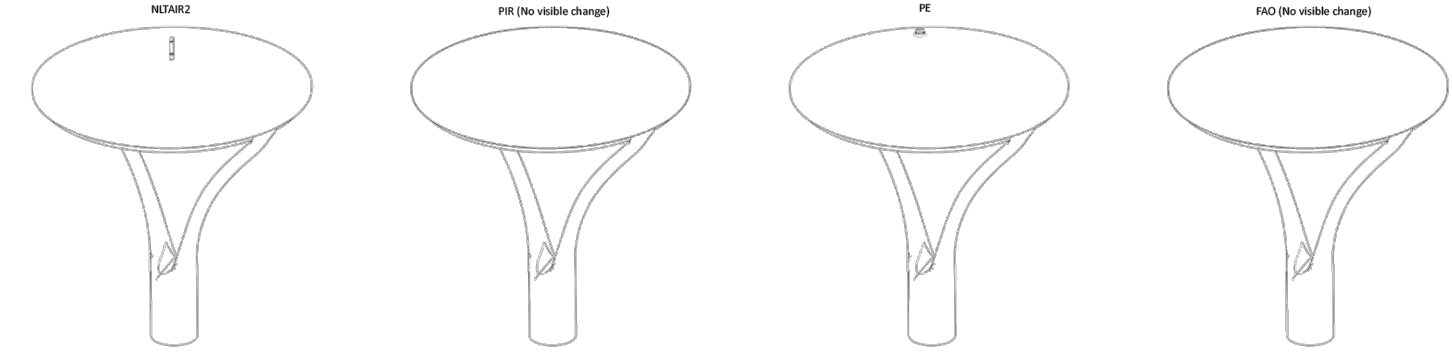
- NOTES**
- 2700K and 3500K may require extended lead-times.
 - M605 D600 operates on any line voltage from 120-277V (50/60 Hz). Single fuse (SF) requires 120, 277 or 347 voltage option. Double fuse (DF) requires 208, 240 or 480 voltage option.
 - Requires minimal 4" round weight metal pole.
 - M62A82 not available with PE or FAO. Mount link to external Light Air network. Does not include occupancy sensor. For more information refer to JSD02 pole mount sensor.
 - For left rotation, select R90 and rotate luminaires 180° on pole.
 - Also available as a separate accessory, see Accessories information at left. IS not available with R90. Shield is field-replaceable shield in 180° increments.

Mounting



Acuity Part Number	Description	For luminaires	Used with Mounting
R55 14 48PT D600	14" Round Straight Steel - 4" O.D. - Open Top	RADPT LED	PT4
R55 12 48PT D600	12" Round Straight Steel - 4" O.D. - Open Top	RADPT LED	PT4
R55 14 48PT D600	14" Round Straight Steel - 4" O.D. - Open Top	RADPT LED	PT4
R55 16 48PT D600	16" Round Straight Steel - 4" O.D. - Open Top	RADPT LED	PT4
R55 18 48PT D600	18" Round Straight Steel - 4" O.D. - Open Top	RADPT LED	PT4
R55 20 48PT D600	20" Round Straight Steel - 4" O.D. - Open Top	RADPT LED	PT4
R55 25 48PT D600	25" Round Straight Steel - 4" O.D. - Open Top	RADPT LED	PT4
R55 16 48T30 D600	16" Round Straight Steel - 4" O.D. - Tenon Top	RADPT LED	RADPT20
R55 12 48T30 D600	12" Round Straight Steel - 4" O.D. - Tenon Top	RADPT LED	RADPT20
R55 14 48T30 D600	14" Round Straight Steel - 4" O.D. - Tenon Top	RADPT LED	RADPT20
R55 16 48T30 D600	16" Round Straight Steel - 4" O.D. - Tenon Top	RADPT LED	RADPT20
R55 18 48T30 D600	18" Round Straight Steel - 4" O.D. - Tenon Top	RADPT LED	RADPT20
R55 20 48T30 D600	20" Round Straight Steel - 4" O.D. - Tenon Top	RADPT LED	RADPT20
R55 25 48T30 D600	25" Round Straight Steel - 4" O.D. - Tenon Top	RADPT LED	RADPT20

Control Options



W1 245 746

CAUTION - Risk of Fire. Consult a Qualified Electrician to Ensure Correct Branch Circuit Conductivity. Min. 15' O'D. Barely Conductive.
 Precaución - Riesgo de incendio. Consulte a un electricista calificado para garantizar la conductividad adecuada de los circuitos de ramificación. Conductividad mínima de 15' O'.

Other Finishes / Otros acabados



Polished Brass Finish
 Acabado en latón pulido
 249 897

White Finish
 Acabado en blanco
 250 399

Other finishes also available in stores or online at homedepot.com.
 Otros acabados están disponibles en las tiendas o por internet en homedepot.com.

For Wet Locations
 Use (3) Standard 3/4" x 10" NPT or CPVC Equipment Drain Strainer. Para lugares húmedos, Use (3) drenajes estándar de 3/4" x 10" NPT, adaptador de drenaje.

3 Year Warranty
 3 años de garantía.

MADE IN CHINA
 HECHO EN CHINA

UL US
 Recycled Reciclado

SCAN ME
 with The Home Depot App for more product information.
 ESCANÉAME con la app de The Home Depot para más información del producto.

FOR ASSISTANCE, CALL:
 1-888-88-HAMPPTON
 HAMPPTON@CDM.COM

PLANT
 ENGINEERING CONSULTANTS
 320 WEST FILLMORE STREET COLORADO SPRINGS CO 80907
 719 473 7077
 www.plantec.com



721 WESTERN DR. TOWNHOMES
 SITE DEVELOPMENT PLAN PHOTOMETRY
 721 WESTERN DRIVE, COLORADO SPRINGS, CO 80915

REVISIONS	MARK	DATE	COMMENT
		09/18/2023	COORDINATION SET
		05/23/2024	CITY REVIEW COMMENTS

CUT SHEETS

PROJECT	23080
DATE	05/23/2024
DRAWN	CAO
CHECKED	MP
SHEET	DP3

5/23/2024 10:36:06 AM odgdphe autorator
 C:\Users\5223\Documents\721 western drive townhomes.sht dpt.v4.drawing.v4.3 autorat.v4.3 electronic\23080_dp3.dwg