

DESIGNED BY: KRK
DRAWN BY: KRK
CHECKED BY: EJC
DATE: 1/28/2022

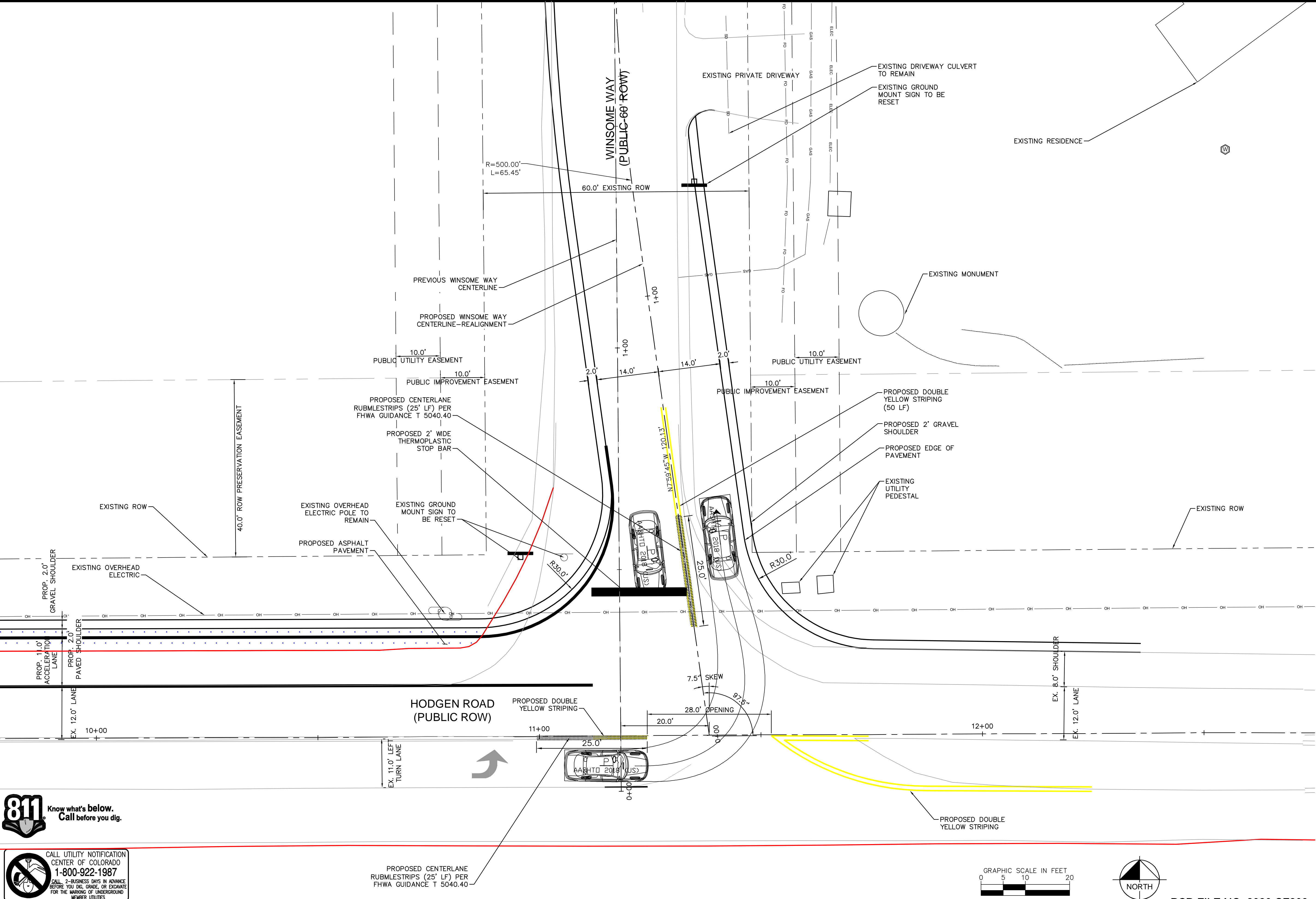
K:\COS_Civil\196106001_Winsome Filing No. 3\CADD\PlanSheets\Winsome 1 Roadway\196106002_Winsome Way Realignment-3.dwg Korford, Kevin 9/26/2022 8:42 AM



Know what's below.
Call before you dig.



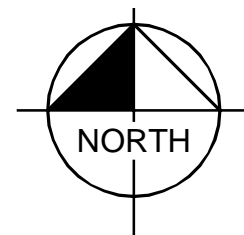
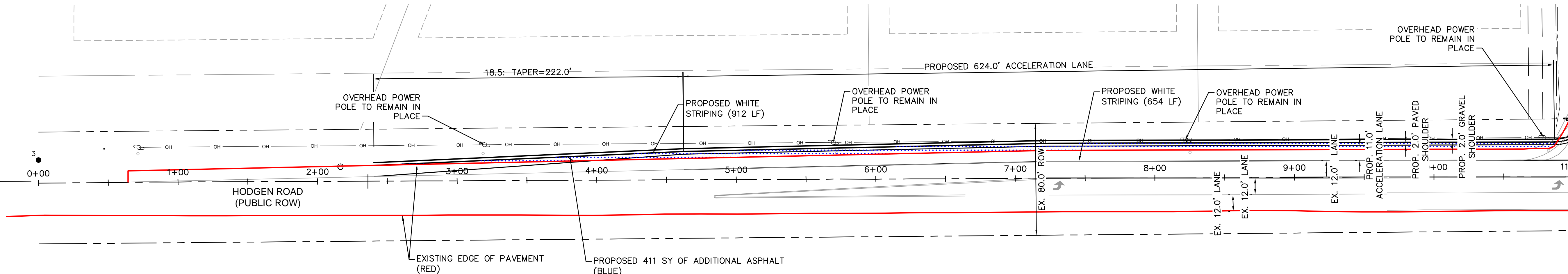
CALL UTILITY NOTIFICATION
CENTER OF COLORADO
1-800-922-1987
CALL 2-BUSINESS DAYS IN ADVANCE
BEFORE YOU DIG, GRADE, OR EXCAVATE
FOR THE MARKING OF UNDERGROUND
MEMBER UTILITIES



KIMLEY»Horn	
2022 KIMLEY-HORN AND ASSOCIATES, INC. 2 North Nevada Avenue Suite 300 Colorado Springs, Colorado 80903 (719) 453-0180	
DESIGNED BY: KRK	CHECKED BY: EUG
DRAWN BY: KRK	DATE: 1/28/2022
WINSOME FILING NO. 1 EL PASO COUNTY, COLORADO CONSTRUCTION DOCUMENTS WINSOME REALIGNMENT	
PRELIMINARY FOR REVIEW ONLY NOT FOR CONSTRUCTION	
PROJECT NO. 196106002	
SHEET	
NO.	REVISION
BY	DATE
APPR.	

PCD FILE NO. 2020-SF203

K:\COS_Civil\196106001_Winsome Filing No. 3\CADD\PlanSheets\Winsome 1 Roadway\196106002_Winsome Way Realignment-3.dwg



GRAPHIC SCALE IN FEET

A horizontal line with vertical tick marks at 0, 20, 40, and 80. The segments between 0 and 20, 20 and 40, and 40 and 80 are shaded black. The segment between 0 and 20 is divided into two equal parts by a vertical line. The segment between 20 and 40 is divided into two equal parts by a vertical line. The segment between 40 and 80 is divided into four equal parts by three vertical lines.

PCD FILE NO. 2020-SF203

[illegible]

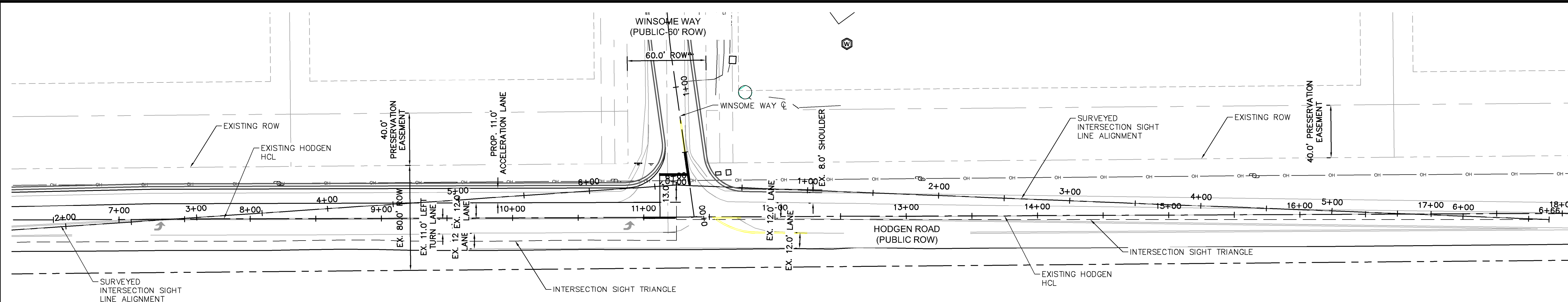
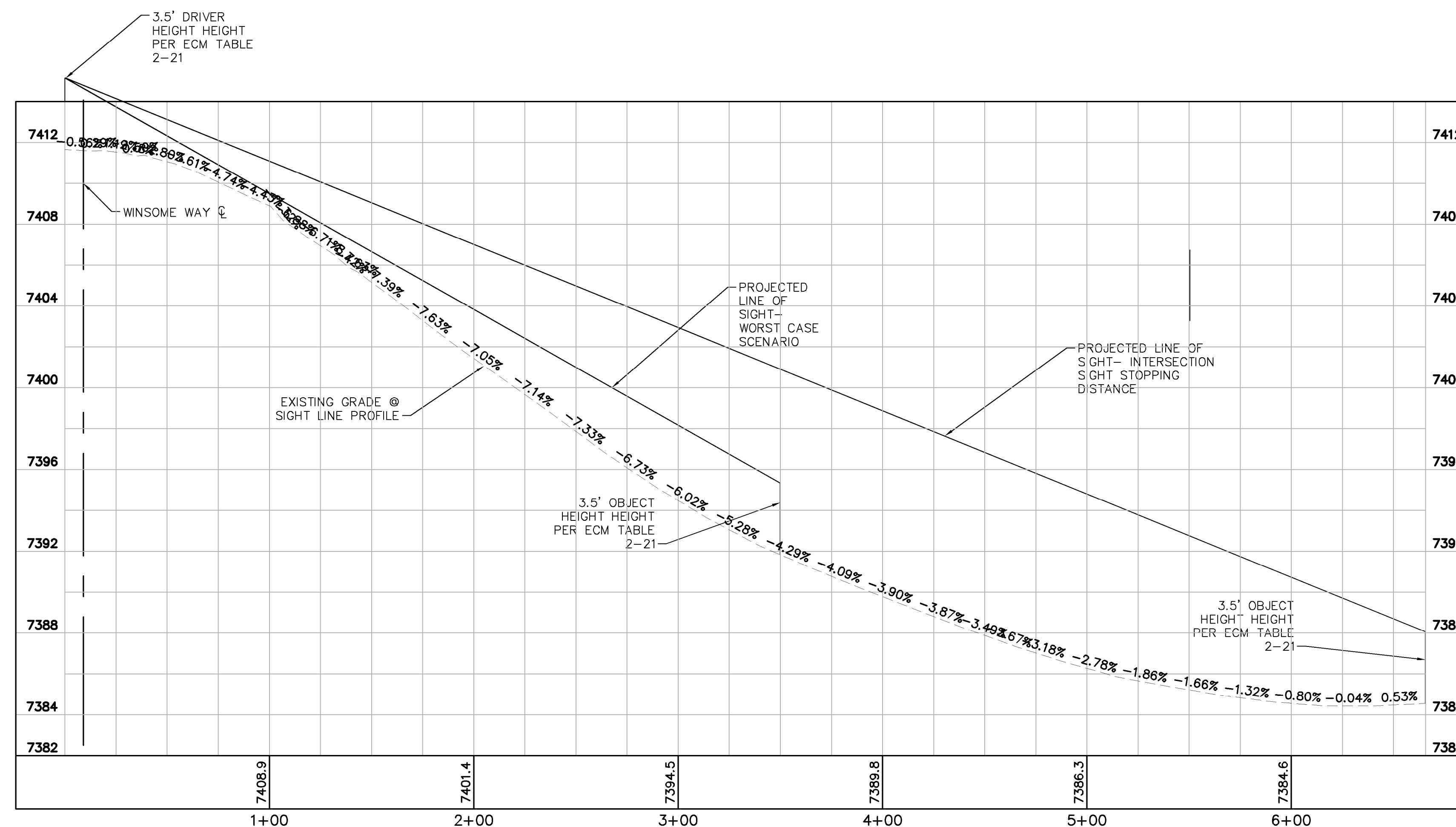
Kimley»Horn
2022 KIMLEY-HORN AND ASSOCIATES, INC.
2 North Nevada Avenue Suite 300
Colorado Springs, Colorado 80903 (719) 453-0180

DESIGNED BY: KRK
DRAWN BY: KRK
CHECKED BY: EJJ
DATE: 1/28/2022

WINSOME FILING NO. 1
EL PASO COUNTY, COLORADO
CONSTRUCTION DOCUMENTS
WINSOME REALIGNMENT -ACC. CONCEPT

PRELIMINARY
FOR REVIEW ONLY
NOT FOR
CONSTRUCTION
Kimley»Horn
Kimley-Horn and Associates, Inc.

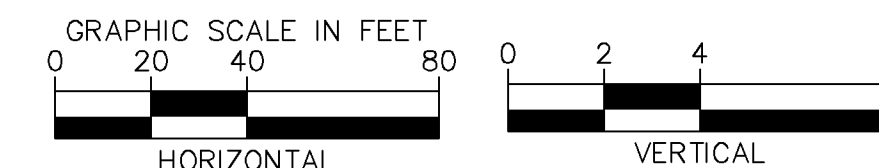
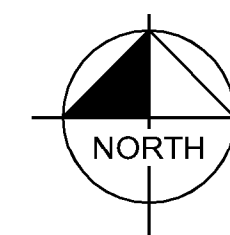
PROJECT NO. 196106002
SHEET

SB-WB RIGHT TURN

SB-WB RIGHT TURN PROFILES



Know what's **below**.
Call before you dig



PCD FILE NO. 2020-SF203

Kimley»Horn

2022 KIMLEY-HORN AND ASSOCIATES, INC.
2 North Nevada Avenue Suite 300
Colorado Springs, Colorado 80903 (719) 451-1111

DESIGNED BY: KRK
DRAWN BY: KRK
CHECKED BY: EJJ
DATE: 1/28/2022

WINSOME FILING NO. 1
EL PASO COUNTY, COLORADO
CONSTRUCTION DOCUMENTS
SB-WB RIGHT TURN

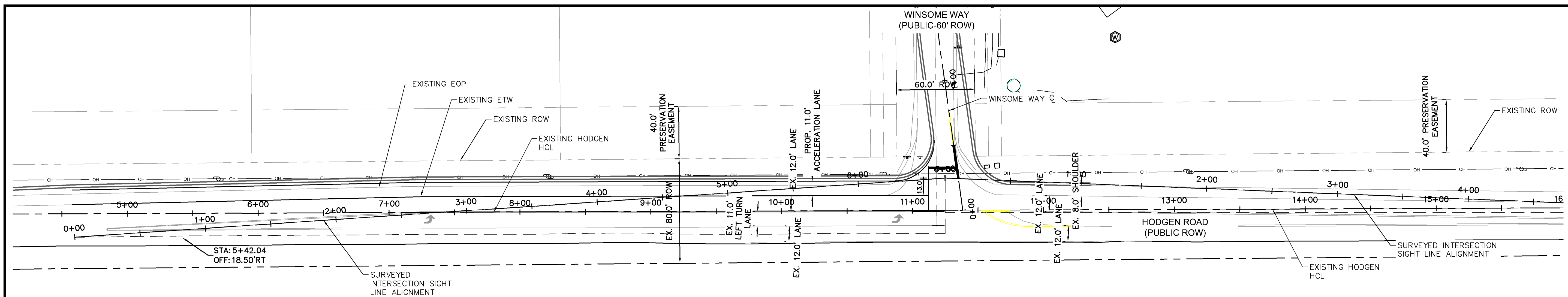
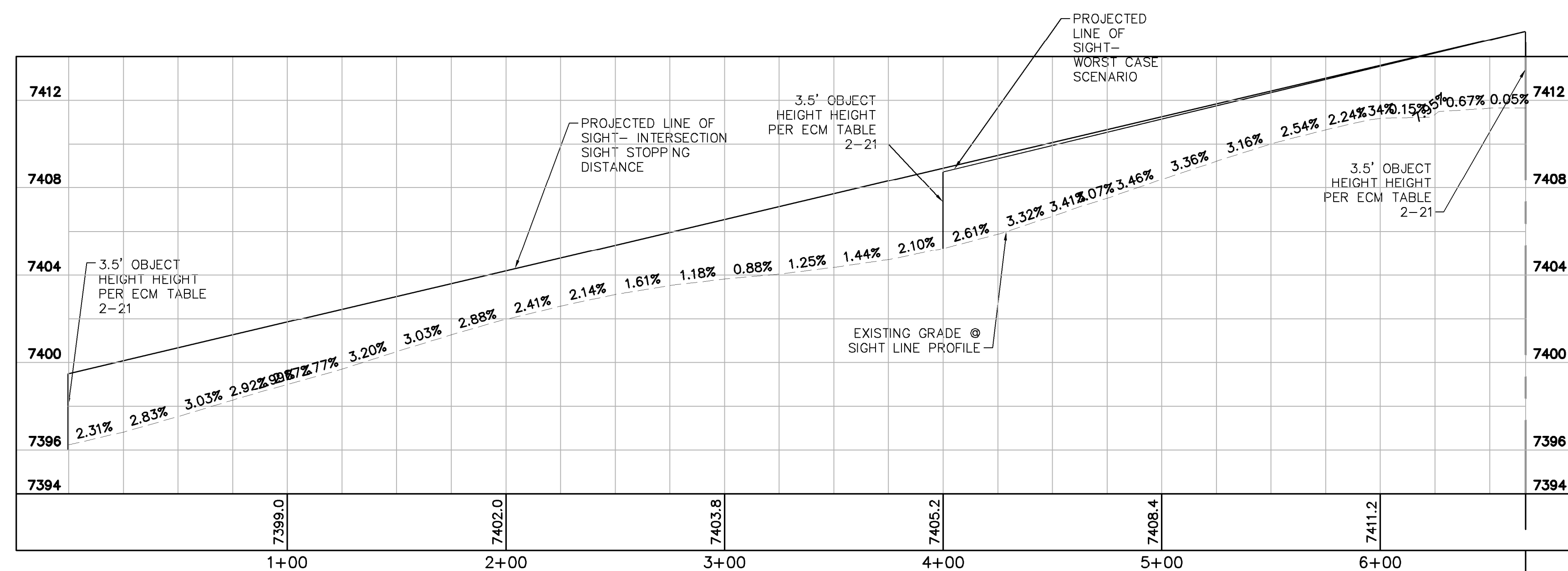
PRELIMINARY
FOR REVIEW ONLY
NOT FOR
CONSTRUCTION
Kimley»Horn
Kimley-Horn and Associates, Inc.

PROJECT NO.
196106002

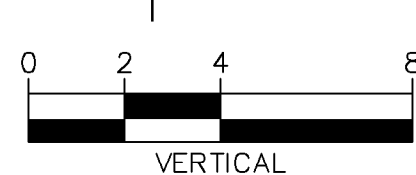
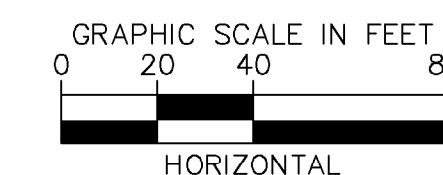
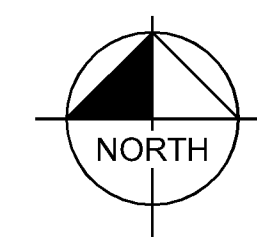
SHEET

3

NO	REVISION	BY	DATE	APPR
----	----------	----	------	------

SB-EB LEFT TURN

SB-EB LEFT TURN PROFILES



PCD FILE NO. 2020-SF203

Kimley»Horn
2022 KIMLEY-HORN AND ASSOCIATES, INC.

2022 KIMLEY-HORN AND ASSOCIATES, INC.
2 North Nevada Avenue Suite 300
Colorado Springs, Colorado 80903 (719) 453-0180

DESIGNED BY: KRK
DRAWN BY: KRK
CHECKED BY: EJK
DATE: 1/28/2022

WINSOME FILING NO. 1
EL PASO COUNTY, COLORADO
CONSTRUCTION DOCUMENTS
SB-EB LEFT TURN

PRELIMINARY
FOR REVIEW ONLY
NOT FOR
CONSTRUCTION
Kimley»Horn
Kimley-Horn and Associates, Inc.

PROJECT NO.	196106002
-------------	-----------

SHEET

2

NO.	REVISION	BY	DATE	APPR.
-----	----------	----	------	-------