

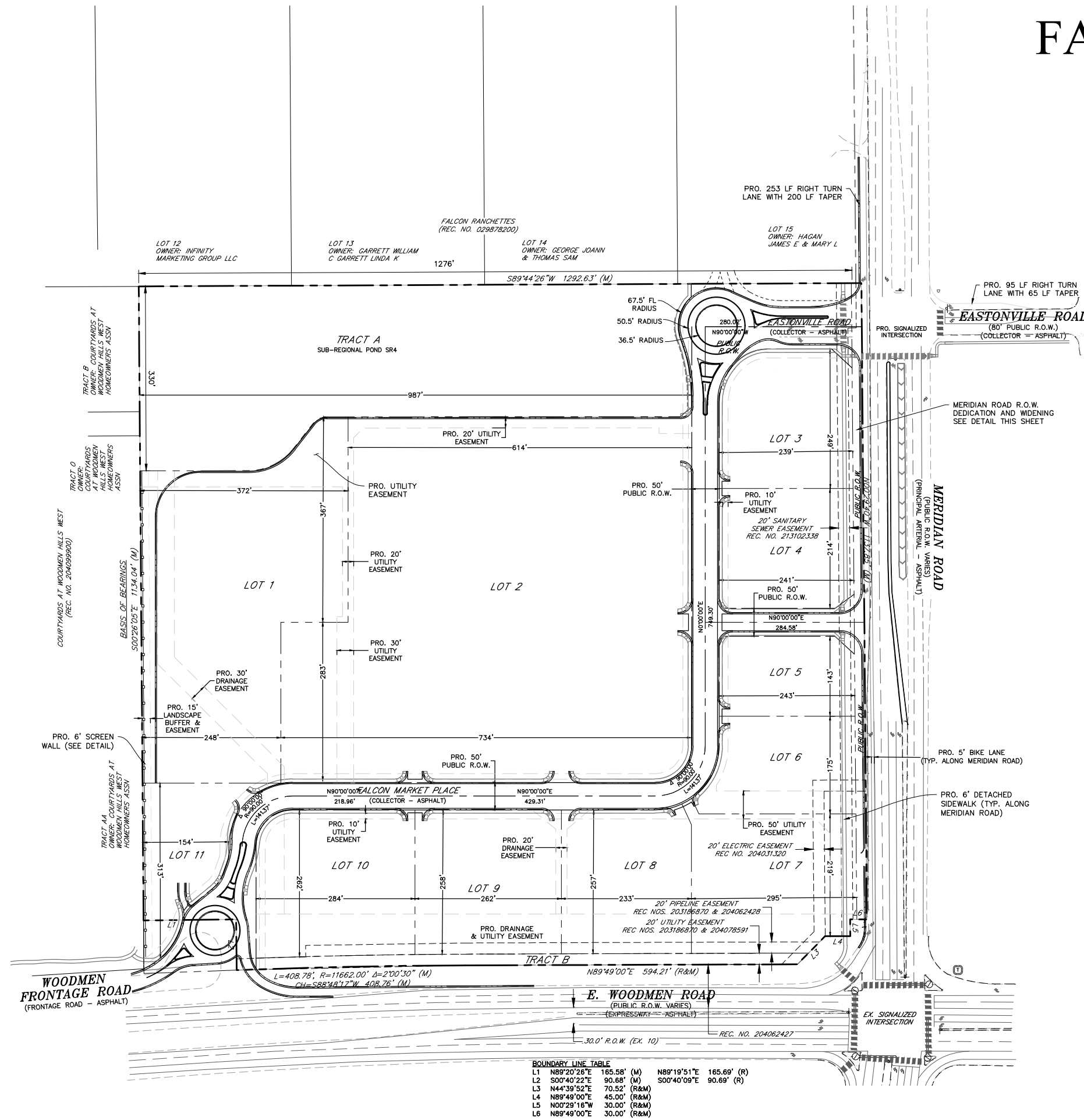
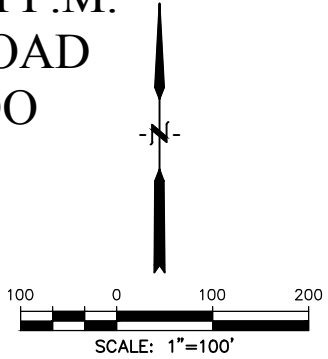
PRELIMINARY PLAN
FALCON MARKETPLACE

FILING NO. 1

SE 1/4 OF THE SE 1/4 OF SECTION 1,
T13S, R65W OF THE 6TH P.M.
11680 E. WOODMEN ROAD
FALCON, COLORADO

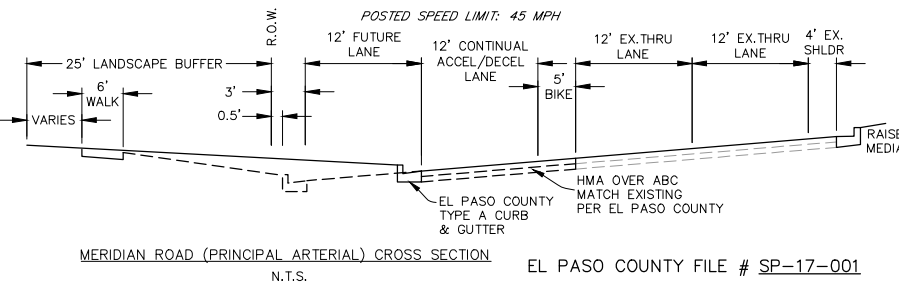
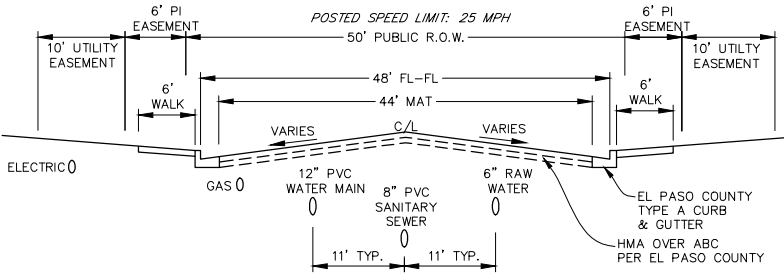
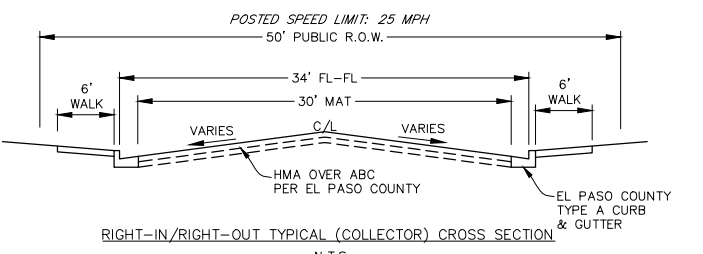
LEGEND

PROPERTY LINE	-----
LOT LINE	-----
EASEMENT	-----
CURB & GUTTER	=====
SIDEWALK	=====

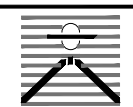


BOUNDARY LINE TABLE

L1	N89°20'26"E	165.58' (M)	N89°19'51"E	165.69' (R)
L2	S00°40'22"E	90.68' (M)	S00°40'09"E	90.69' (R)
L3	N44°39'52"E	70.52' (R&M)		
L4	N89°49'00"E	45.00' (R&M)		
L5	N00°29'16"W	30.00' (R&M)		
L6	N89°49'00"E	30.00' (R&M)		



PREPARED BY:


DREXEL, BARRELL & CO.
Engineers-Surveyors
3 SOUTH 7TH STREET
COLORADO SPRINGS, COLORADO 80905
CONTACT: TIM D. MCCONNELL, P.E.
(719)260-0887
BOULDER • COLORADO SPRINGS

CLIENT:

HUMMEL INVESTMENTS, LLC
8117 PRESTON ROAD, SUITE 120
DALLAS, TEXAS 75225
(214) 416-9820

PRELIMINARY PLAN FOR
FALCON MARKETPLACE
FALCON, COLORADO

ISSUE	DATE
INITIAL ISSUE	1-17-17
2nd SUBMITTAL	3-23-17
REVISION	5-12-17
DESIGNED BY:	TDM
DRAWN BY:	KGV
CHECKED BY:	TDM
FILE NAME:	

PREPARED UNDER MY DIRECT SUPERVISION FOR AND ON BEHALF OF DREXEL, BARRELL & CO.

DRAWING SCALE:
HORIZONTAL: 1"=100'
VERTICAL: N/A

PRELIMINARY
SITE PLAN

PROJECT NO. 20988-00CSCV
DRAWING NO.

PP-2

SHEET: 2 OF 4