



Imagery ©2019 Google, Map data ©2019 Google 100 ft

El Paso County Assessor's Office

1435 BURNHAM CT
SCHEDULE: 6510214001
OWNER: RAJ LLC

COPYRIGHT 2010 by the Board of County Commissioners, El Paso County, Colorado. All rights reserved. No part of this document or data contained hereon may be reproduced, used to prepare derivative products; or distributed without the specific written approval of the Board of County Commissioner, El Paso County, Colorado. This document was prepared from the best data available at the time of plotting and is for internal use only. El Paso County, Colorado, makes no claim as to the completeness or accuracy of the data contained hereon.





DISCLAIMER: (Nov. 2000)

Please be advised that this information is for reference purposes and is deemed unofficial. The zoning information contained herein is subject to constant change and therefore, accuracy and completeness of the information cannot be guaranteed. El Paso County assumes no liability whatsoever for the use of its zoning information by any entity, individual or business. Persons relying on this information do so at their own risk. The County retains all defenses available to it through the Colorado Governmental Immunity Act or as otherwise provided by law. If questions, call El Paso County Development Services Dept. (719) 520-6300.

County Zoning for parcel 6510214001 is CS

COUNTY ZONING CODES

A-5 -	Agricultural	RT -	Residential Topographic
A-35 -	Agricultural	MHP -	Mobile Home Park
F-5 -	Forestry and Recreation	MHP-R -	Mobile Home Park Rural
RR-0.5 -	Residential Rural	MHS -	Mobile Home Subdivision
RR-2.5 -	Residential Rural	RVP -	Recreational Vehicle Park
RR-5 -	Residential Rural	PUD -	Planned Unit Development
RS-20000 -	Residential Suburban	CAD-O -	Commercial Airport District
RS-6000 -	Residential Suburban	GA-O -	General Aviation Overlay District
RS-5000 -	Residential Suburban	HR-O -	High Rise Overlay District
RM-12 -	Residential Multi-Dwelling	RLUP-O -	Rural Land Use Plan Overlay District
RM-30 -	Residential Multi-Dwelling	C-1 -	Commercial (obsolete)
CC -	Commercial Community	C-2 -	Commercial (obsolete)
CR -	Commercial Regional	M -	Industrial (obsolete)
CS -	Commercial Service	R-4 -	Planned Development (obsolete)
I-2 -	Limited Industrial		
I-3 -	Heavy Industrial		

We have made a good-faith effort to provide you with the most recent and most accurate information available. However, if you need to use this information in any legal or official venue, you will need to obtain official copies from the Assessor's Office. Do be aware that this data is subject to change on a daily basis. If you believe that any of this information is incorrect, please call us at (719)520-6600.

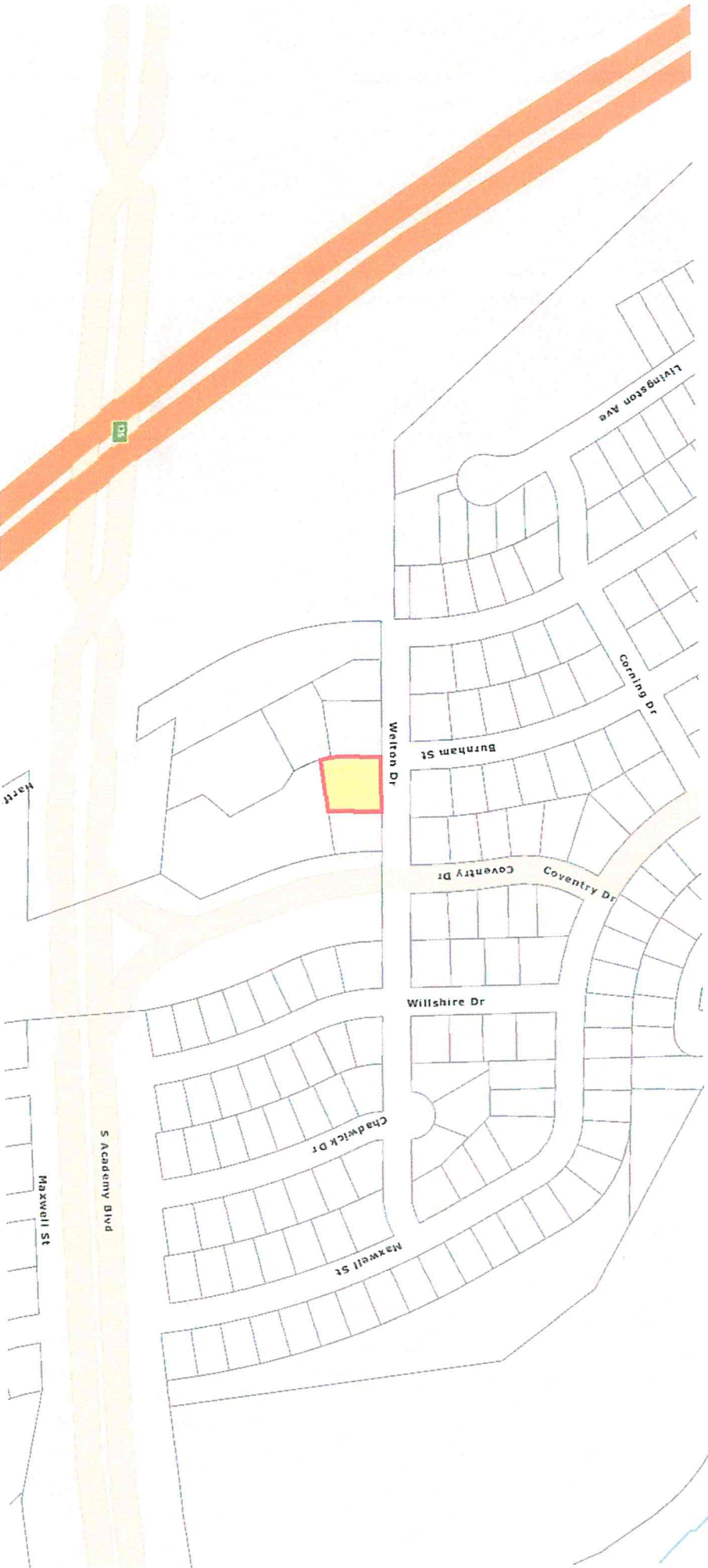
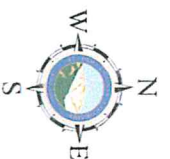
El Paso County Assessor's Office

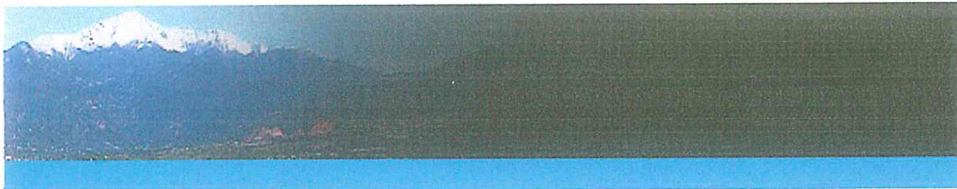
1425 BURNHAM ST

SCHEDULE: 6510214018

OWNER: RAJ LLC

COPYRIGHT 2010 by the Board of County Commissioners, El Paso County, Colorado. All rights reserved. No part of this document or data contained hereon may be reproduced, used to prepare derivative products, or distributed without the specific written approval of the Board of County Commissioners, El Paso County, Colorado. This document was prepared from the best data available at the time of plotting and is for internal use only. El Paso County, Colorado, makes no claim as to the completeness or accuracy of the data contained hereon.





DISCLAIMER: (Nov. 2000)

Please be advised that this information is for reference purposes and is deemed unofficial. The zoning information contained herein is subject to constant change and therefore, accuracy and completeness of the information cannot be guaranteed. El Paso County assumes no liability whatsoever for the use of its zoning information by any entity, individual or business. Persons relying on this information do so at their own risk. The County retains all defenses available to it through the Colorado Governmental Immunity Act or as otherwise provided by law. If questions, call El Paso County Development Services Dept. (719) 520-6300.

County Zoning for parcel 6510214018 is CS

COUNTY ZONING CODES

A-5 -	Agricultural	RT -	Residential Topographic
A-35 -	Agricultural	MHP -	Mobile Home Park
F-5 -	Forestry and Recreation	MHP-R -	Mobile Home Park Rural
RR-0.5 -	Residential Rural	MHS -	Mobile Home Subdivision
RR-2.5 -	Residential Rural	RVP -	Recreational Vehicle Park
RR-5 -	Residential Rural	PUD -	Planned Unit Development
RS-20000 -	Residential Suburban	CAD-O -	Commercial Airport District
RS-6000 -	Residential Suburban	GA-O -	General Aviation Overlay District
RS-5000 -	Residential Suburban	HR-O -	High Rise Overlay District
RM-12 -	Residential Multi-Dwelling	RLUP-O -	Rural Land Use Plan Overlay District
RM-30 -	Residential Multi-Dwelling	C-1 -	Commercial (obsolete)
CC -	Commercial Community	C-2 -	Commercial (obsolete)
CR -	Commercial Regional	M -	Industrial (obsolete)
CS -	Commercial Service	R-4 -	Planned Development (obsolete)
I-2 -	Limited Industrial		
I-3 -	Heavy Industrial		

We have made a good-faith effort to provide you with the most recent and most accurate information available. However, if you need to use this information in any legal or official venue, you will need to obtain official copies from the Assessor's Office. Do be aware that this data is subject to change on a daily basis. If you believe that any of this information is incorrect, please call us at (719)520-6600.



SURROUNDING PROPERTIES

LISA
DEMAREE

NANCY
SAWALL

BRENDA
SOTO

FRANKIE
PORTERA

RAJ LLC

CIMARRON
MOUNTAIN
PROPERTIES LLC

BURNHAM
PARTNERS LLC