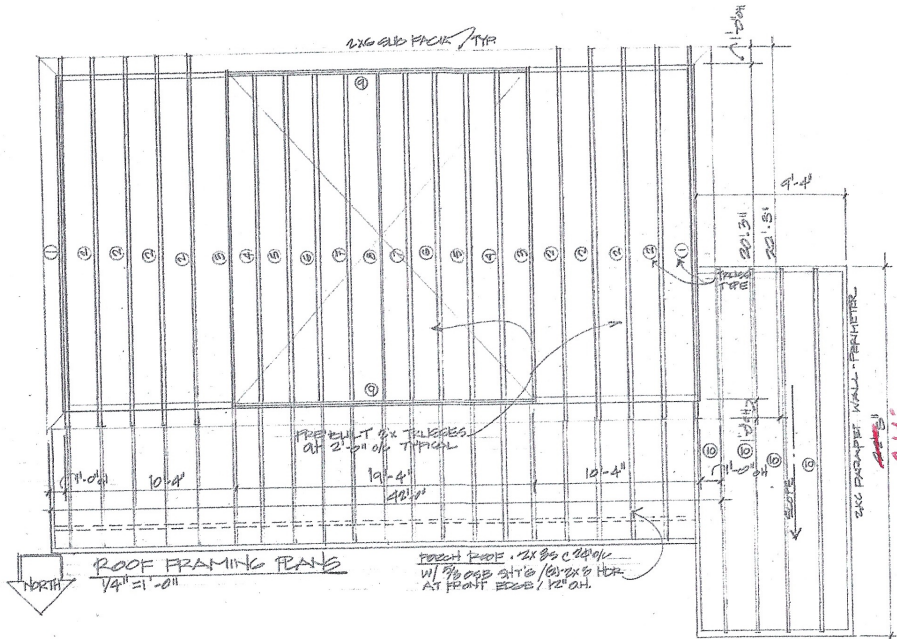


- Show all window locations
- Specify all headers, kings and trimmers
- Specify porch beam and columns, include column spacing
- Label trusses according to truss details provided
- Label all girder trusses with number of plies and bearing chord material



TRUSS TYPES			
TRUSS #	SPAN	PLY	SLOPE
①	20'-3"	2	8/12
②	20'-3"	2	8/12
③	19'-6"	2	8/12
④	19'-6"	2	8/12
⑤	19'-6"	2	8/12
⑥	19'-6"	2	8/12
⑦	19'-6"	2	8/12
⑧	19'-0"	1	
⑨	20'-3"	2	8/12
⑩	20'-3"	1/4" FT. 2x8	

24"