

EROSION CONTROL LEGEND

- LOD (LOD) LIMITS OF DISTURBANCE / CONSTRUCTION
SF (SF) SILT FENCE
CF (CF) CONSTRUCTION FENCE
IPS (IPS) SUMP INLET PROTECTION
IPO (IPO) ON-GRADE INLET PROTECTION
RS (RS) ROCK SOCKS
VTC (VTC) VEHICLE TRACKING CONTROL
CWA (CWA) CONCRETE WASHOUT AREA
SSA (SSA) STABILIZED STAGING AREA
SC (SC) PROPOSED SAWCUT LINE
PT (PT) PORTABLE TOILET
SP (SP) STOCKPILE
CD (CD) CHECK DAM
RR (RR) RIPRAP OUTFALL PADS
SITE (SITE) SITE (CONTACTS AND PERMITS)
WP (WP) WASHOUT POSTING
SBB (SBB) STRAW BALE BARRIER
SB (SB) SEDIMENT BASIN
SCL (SCL) SEDIMENT CONTROL LOG

LEGEND

- EXISTING PROPERTY LINE
PROPOSED PROJECT BOUNDARY
PROPOSED RIGHT OF WAY LINE
EXISTING LOT LINE
PROPOSED LOT LINE
EXISTING EASEMENT
PROPOSED EASEMENT
EXISTING SUBDIVISION BUFFER
EXISTING MAJOR CONTOUR
EXISTING MINOR CONTOUR
PROPOSED MAJOR CONTOUR
PROPOSED MINOR CONTOUR
EXISTING STORM DRAIN PIPE
PROPOSED STORM DRAIN PIPE
EXISTING WATER LINE
PROPOSED WATER LINE
EXISTING SANITARY SEWER LINE
PROPOSED SANITARY SEWER LINE
EXISTING DRAINAGE FEATURE OUTLINE
PROPOSED DRAINAGE FEATURE OUTLINE
EXISTING SWALE WITH FLOW DIRECTION
PROPOSED SWALE WITH FLOW DIRECTION
100-YEAR FEMA FLOODPLAIN
PROPOSED GRAVEL PER EGM TABLE D-7
PROPOSED RIP RAP
EXISTING CONCRETE PAVING
EXISTING GRAVEL PER EGM TABLE D-7
EXISTING 1" TO 2" CRUSHED ROCK
EXISTING RIP RAP
EXISTING GROUDED Boulders
PROPOSED LOT #
EXISTING LOT # (BENT GRASS FILING NO. 2)
PROPOSED ADA RAMP
SPOT ELEVATION - HIGH POINT
SPOT ELEVATION - LOW POINT
SPOT ELEVATION - FINISH GRADE
EXISTING SLOPE (PERCENT)
EXISTING SLOPE (RISE:RUN)
PROPOSED SLOPE (PERCENT)
PROPOSED SLOPE (RISE:RUN)
FLOW ARROW

NOTES

- 1. ADD 8900 TO ALL SPOT ELEVATIONS
2. THE PLAN SHALL NOT SUBSTANTIALLY CHANGE THE DEPTH OF COVER, OR ACCESS TO UTILITY FACILITIES. ADDITIONALLY, THE PLAN SHALL NOT INCREASE OR DIVERT WATER TOWARDS UTILITY FACILITIES. ANY CHANGES TO UTILITY FACILITIES TO ACCOMMODATE THE PLAN, MUST BE DISCUSSED AND AGREED TO BY THE AFFECTED UTILITY PRIOR TO IMPLEMENTING THE PLAN. THE RESULTING COST TO RELOCATE PROTECT UTILITIES, OR PROVIDE INTERIM ACCESS IS AT THE EXPENSE OF THE PLAN APPLICANT.
3. NO WETLANDS ARE TO BE PERMANENTLY DISTURBED FOR THIS PLAN.
4. NO GRADING IS TO OCCUR WITHIN THE 100-YEAR FLOODPLAIN.
6. THE EROSION CONTROL DELINEATED ON THIS PLAN SHALL BE REGULARLY UPDATED BY THE CONTRACTORS.
7. CONTRACTOR SHALL PROTECT ALL AREAS OUTSIDE OF THE CONSTRUCTION LIMITS WITH SILT FENCE OR OTHER METHOD TO PROTECT UNDISTURBED AREAS FROM EROSION.
8. ALL TEMPORARY OR PERMANENT GRADING DISTURBANCES SHALL BE RE-SEEDDED AND MULCHED PER EL PASO COUNTY CRITERIA AND SPECIFICATIONS.
9. ALL TEMPORARY RIPRAP SHOWN ON THE PLANS SHALL BE TYPE 'W'. RIPRAP SHALL BE PLACED IN THE LOCATIONS INDICATED BY THE PLAN OR IN AREAS AS THE CONTRACTOR SEES FIT TO CONTROL EROSION. ALL RIPRAP SHALL BE PLACED AT A MINIMUM THICKNESS OF 1.5' DEEP.
10. ALL TEMPORARY STORM DRAIN SHOWN ON THE PLANS SHALL BE 24" DIA. HP POLYPROPYLENE. ALL PIPE SHALL BE LAD TO ACHIEVE A MIN. SLOPE OF 0.5%.

EROSION CONTROL PHASING SCHEDULE

Table with 2 columns: PHASE and DESCRIPTION. Rows include INITIAL, INTERM, and FINAL phases with corresponding descriptions of erosion control measures.

BASIS OF BEARINGS

ALL BEARINGS ARE GRID BEARINGS OF THE COLORADO STATE PLANE COORDINATE SYSTEM, CENTRAL ZONE, NORTH AMERICAN DATUM 1983. THE BEARING OF THE LINE BETWEEN THE SOUTHWEST CORNER OF SECTION 1, T13S, R65W AND THE WEST QUARTER CORNER SECTION 1, T13S, R65W IS N007°34'46"W AND MONUMENTED AS SHOWN.

BENCHMARK

THE SOUTHWESTERLY CORNER OF LOT 1 WOODMEN HILLS FILING NO. 4, MONUMENTED BY A YELLOW PLASTIC SURVEYORS CAP ON A NO. 4 REBAR L@# 24954 ELEVATION = 6947.67

CAUTION - NOTICE TO CONTRACTOR

- 1. ALL UTILITY LOCATIONS SHOWN ARE BASED ON MAPS PROVIDED BY THE APPROPRIATE UTILITY COMPANY AND FIELD SURFACE EVIDENCE AT THE TIME OF SURVEY AND IS TO BE CONSIDERED AN APPROXIMATE LOCATION ONLY. IT IS THE CONTRACTOR'S RESPONSIBILITY TO FIELD VERIFY THE FIELD LOCATION OF ALL UTILITIES, PUBLIC OR PRIVATE, WHETHER SHOWN ON THE PLANS OR NOT, PRIOR TO CONSTRUCTION. REPORT ANY DISCREPANCIES TO THE ENGINEER PRIOR TO CONSTRUCTION.
2. WHERE A PROPOSED UTILITY CROSSES AN EXISTING UTILITY, IT IS THE CONTRACTOR'S RESPONSIBILITY TO FIELD VERIFY THE HORIZONTAL AND VERTICAL LOCATION OF SUCH EXISTING UTILITY, EITHER THROUGH POT-HOLING OR ALTERNATIVE METHOD. REPORT INFORMATION TO THE ENGINEER PRIOR TO CONSTRUCTION.



1155 Kelly Johnson Blvd., Suite 305
Colorado Springs, CO 80920
719.900.7220
GallowayUS.com



COPYRIGHT
THESE PLANS ARE AN INSTRUMENT OF SERVICE AND ARE THE PROPERTY OF GALLOWAY, AND MAY NOT BE DUPLICATED, DISCLOSED, OR REPRODUCED WITHOUT THE WRITTEN CONSENT OF GALLOWAY. COPYRIGHTS AND INFRINGEMENTS WILL BE ENFORCED AND PROSECUTED.

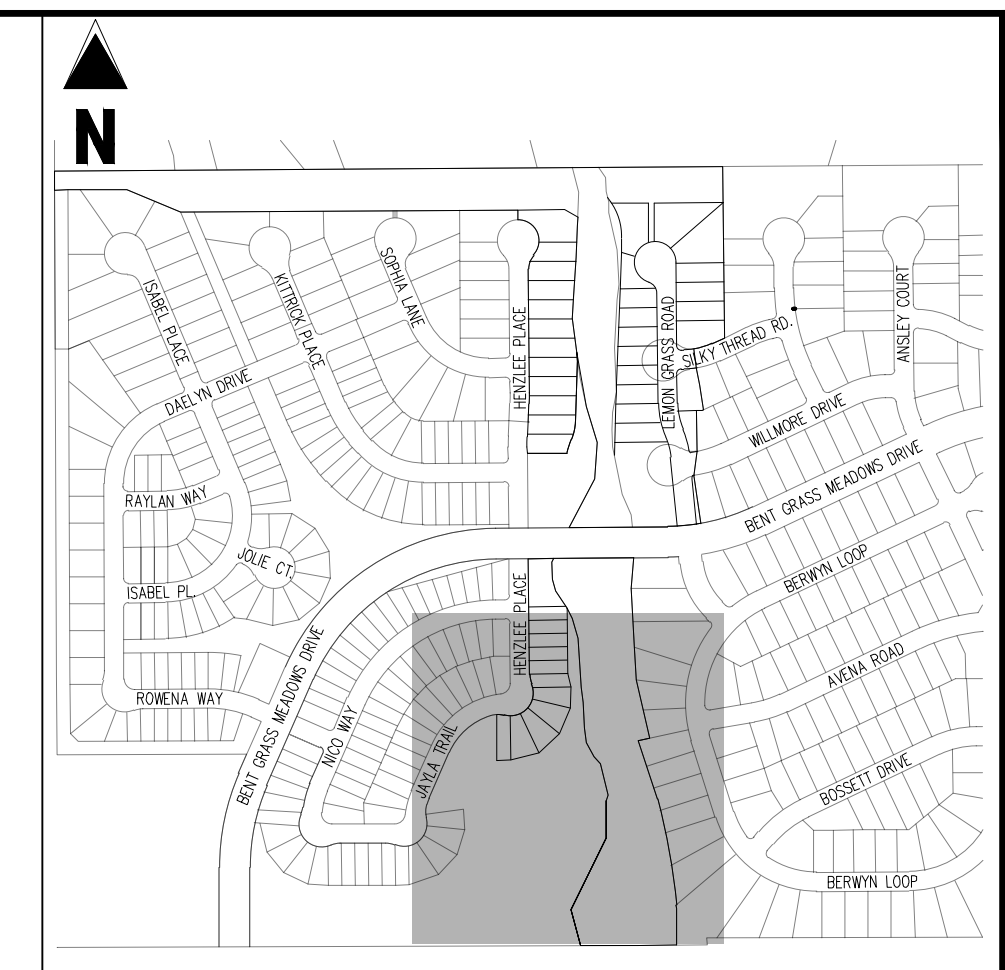
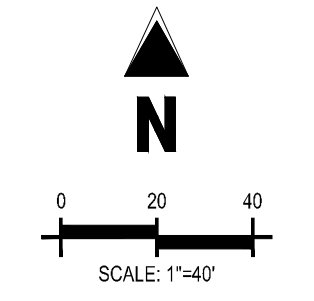
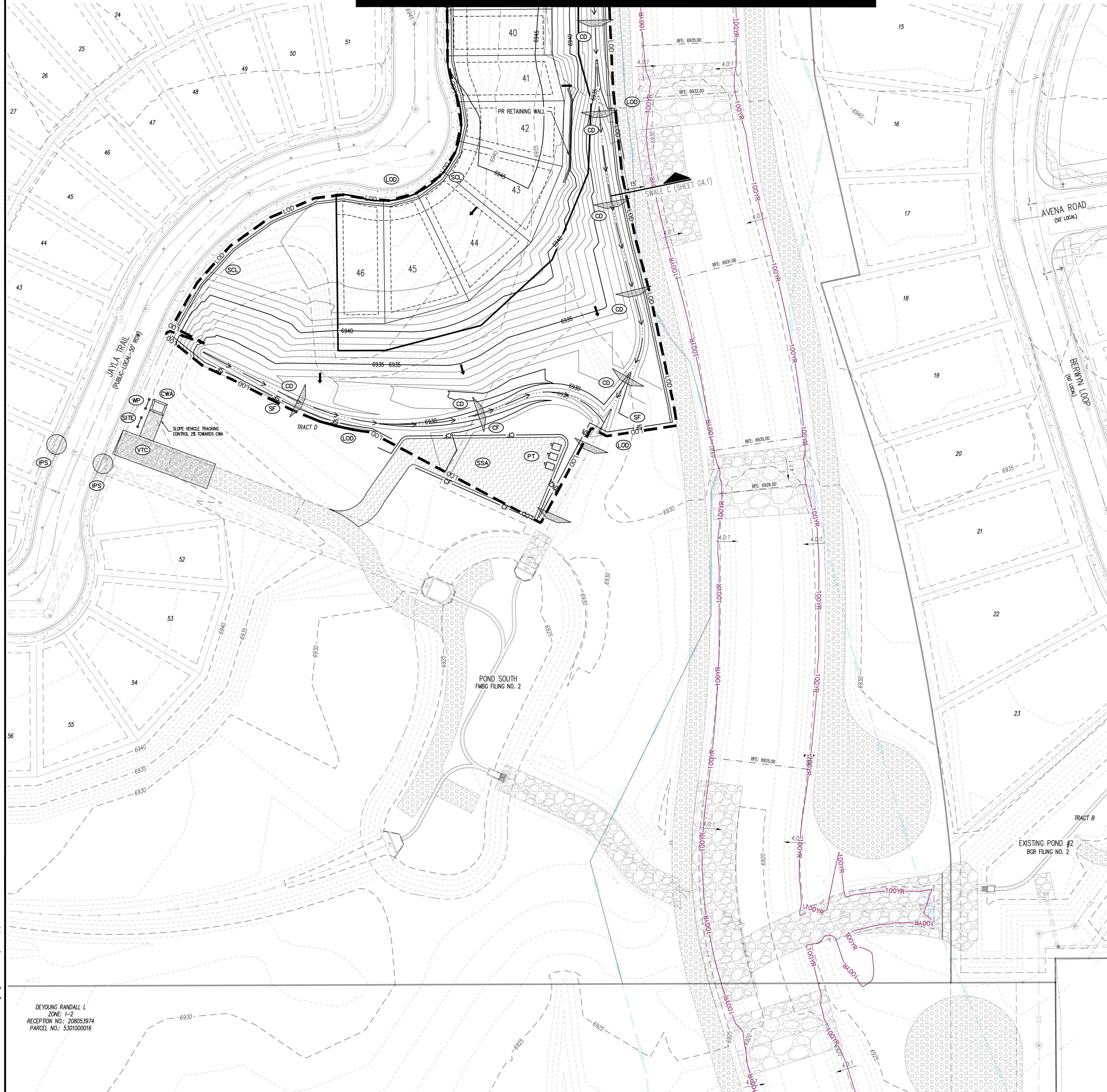


CONSTRUCTION DOCUMENTS
FALCON MEADOWS AT BENT GRASS FILING NO. 4
FOR
CHALLENGER COMMUNITIES, LLC
BENT GRASS MEADOWS DRIVE & MERIDIAN ROAD
FALCON, CO 80831 - EL PASO COUNTY

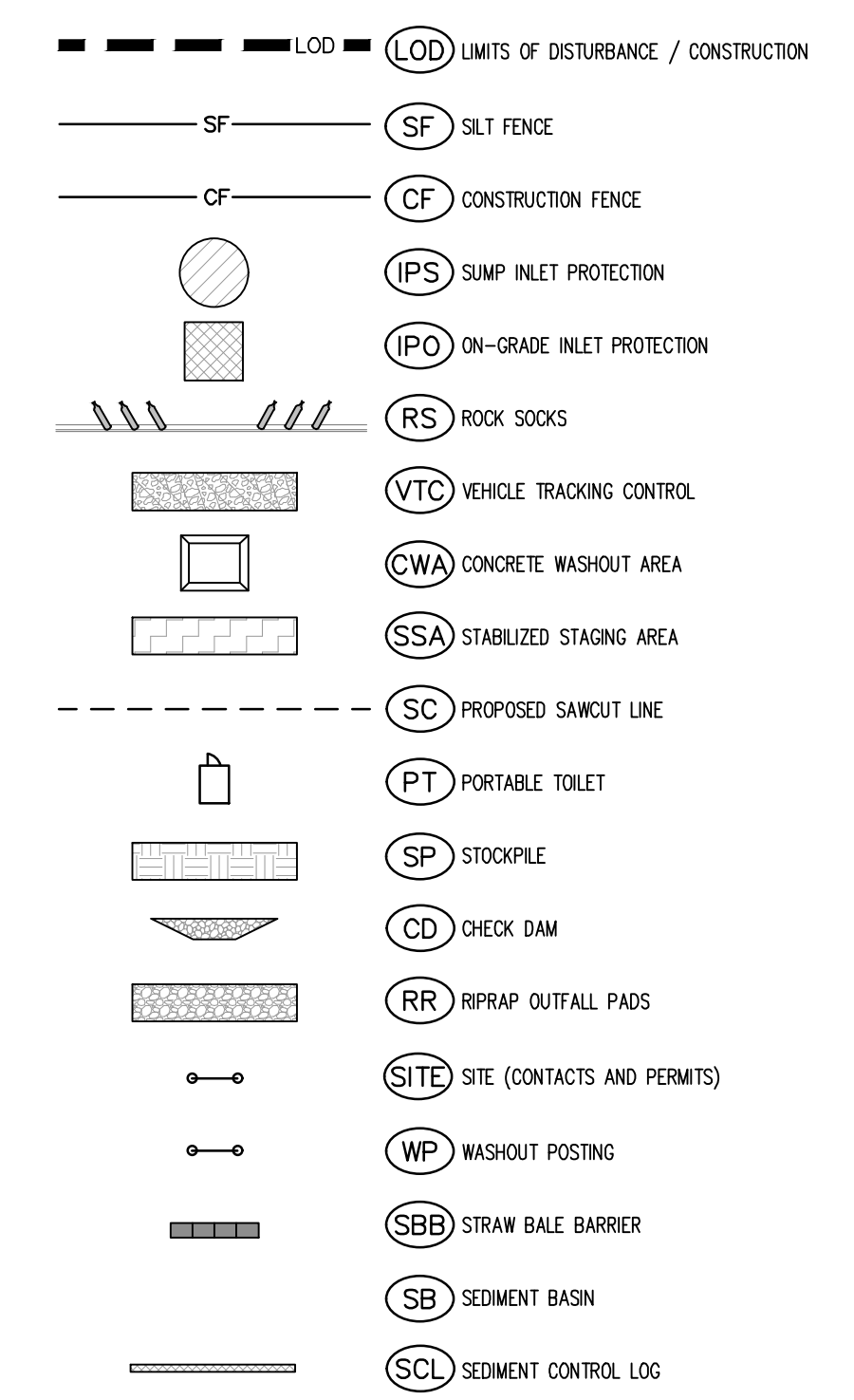
Revision table with columns: #, Date, Issue / Description, Init. Contains several empty rows for revisions.

Project No: CLH000021
Drawn By: JDM, BLB
Checked By: BAS, CMWJ
Date: 05/17/2024

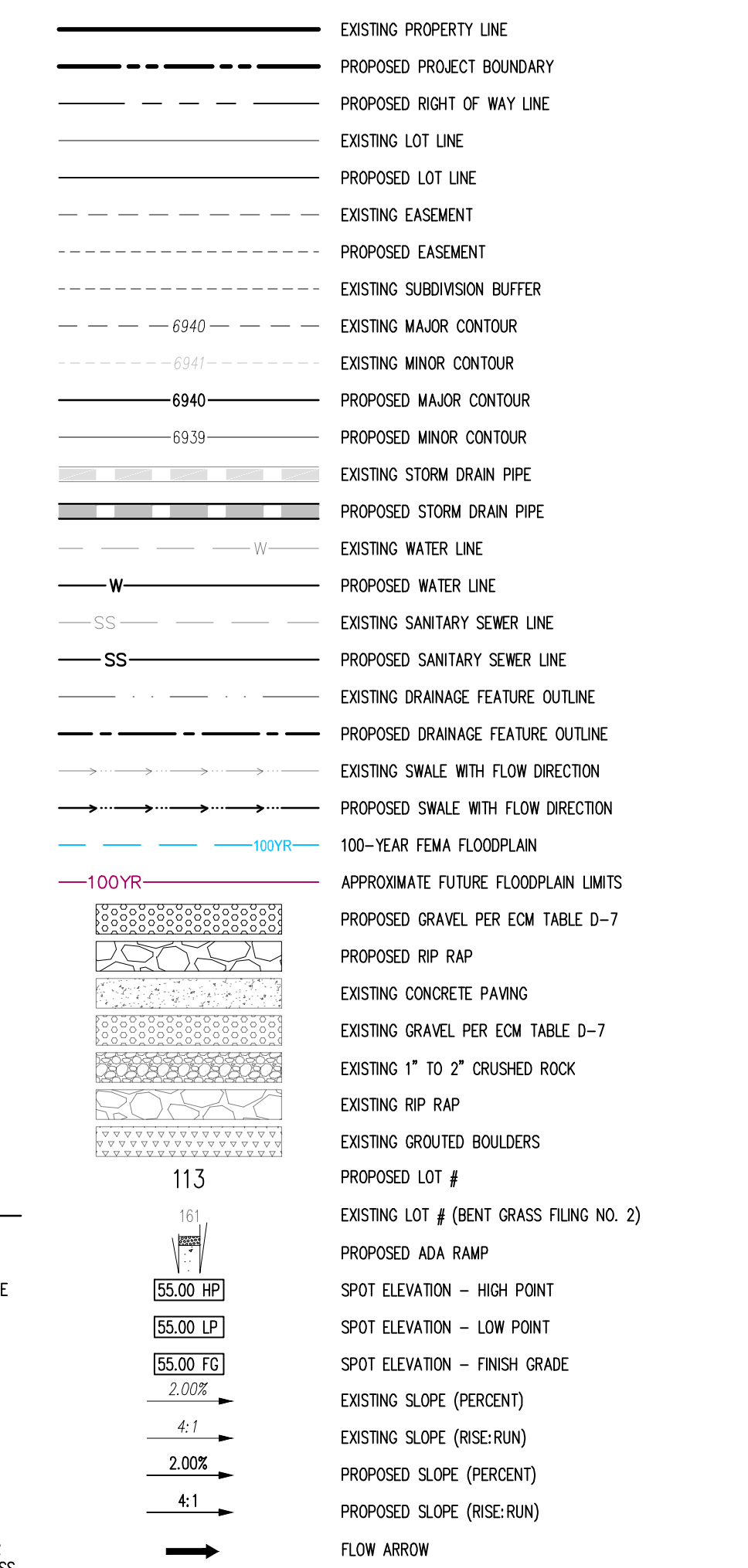
GRADING & EROSION CONTROL INITIAL PLAN



EROSION CONTROL LEGEND



LEGEND



NOTES

- 1. ADD 6900 TO ALL SPOT ELEVATIONS.
- 2. THE PLAN SHALL NOT SUBSTANTIALLY CHANGE THE DEPTH OF COVER, OR ACCESS TO UTILITY FACILITIES. ADDITIONALLY, THE PLAN SHALL NOT INCREASE OR DIVERT WATER TOWARDS UTILITY FACILITIES. ANY CHANGES TO UTILITY FACILITIES TO ACCOMMODATE THE PLAN, MUST BE DISCUSSED AND AGREED TO BY THE AFFECTED UTILITY PRIOR TO IMPLEMENTING THE PLAN. THE RESULTING COST TO RELOCATE OR PROTECT UTILITIES, OR PROVIDE INTERIM ACCESS IS AT THE EXPENSE OF THE PLAN APPLICANT.
- 3. NO WETLANDS ARE TO BE PERMANENTLY DISTURBED PER THIS PLAN.
- 4. NO GRADING IS TO OCCUR WITHIN THE 100-YEAR FLOODPLAIN.
- 5. THE EROSION CONTROL DELINEATED ON THIS PLAN SHALL BE REGULARLY UPDATED BY THE CONTRACTOR.
- 6. CONTRACTOR SHALL PROTECT ALL AREAS OUTSIDE OF THE CONSTRUCTION LIMITS WITH SILT FENCE OR OTHER METHOD TO PROTECT UNDISTURBED AREAS FROM EROSION.
- 7. ALL TEMPORARY OR PERMANENT GRADING DISTURBANCES SHALL BE RE-SEEDING AND MULCHED PER EL PASO COUNTY CRITERIA AND SPECIFICATIONS.
- 8. ALL TEMPORARY RIPRAP SHOWN ON THE PLANS SHALL BE TYPE 'M'. RIPRAP SHALL BE PLACED IN THE LOCATIONS INDICATED BY THE PLAN OR IN AREAS AS THE CONTRACTOR SEES FIT TO CONTROL EROSION. ALL RIPRAP SHALL BE PLACED AT A MINIMUM THICKNESS OF 1.5' DEEP.
- 9. ALL TEMPORARY STORM DRAIN SHOWN ON THE PLANS SHALL BE 24\"/>
- 10. ALL TEMPORARY STORM DRAIN SHOWN ON THE PLANS SHALL BE 24\"/>

EROSION CONTROL PHASING SCHEDULE

PHASE	DESCRIPTION
INITIAL	INSTALL SITE POSTING, SILT FENCE, INLET PROTECTION MEASURES ON EXISTING INLETS, AND CURB SOCKS ALONG BENT GRASS MEADOWS DRIVE & HENZLE PLACE.
INTERM	INSTALL STABILIZED STAGING AREA, VEHICLE TRACKING CONTROL, AT ENTRANCES, AND CONCRETE WASHOUT AREA. THEN OVERLOT GRADE THE ENTIRE PROJECT SITE AS SHOWN ON PLAN VIEW. INSTALL STRAW BALE BARRIERS ALONG INTERNAL ROADWAYS, AND INSTALL CHECK DAMS ALONG PROPOSED SWALES. FINALLY, INSTALL PROPOSED STORM SEWER. CONTRACTOR TO USE EXTREME CAUTION TO NOT DAMAGE THE WATER AND WASTEWATER IMPROVEMENTS COMPLETED IN THE UTILITY CONSTRUCTION PLANS. REMOVE THE TEMPORARY SEDIMENT TRAPS ONCE CONSTRUCTION BEGINS ON CURB/GUTTER AND PAVEMENT.
FINAL	CONSTRUCT CURB/GUTTER AND PAVEMENT. CONSTRUCT GAS/ELECTRIC/CABLE/PHONE IN ROW AREAS. REMOVE CONSTRUCTION BMP'S ONCE VERTICAL CONSTRUCTION OF HOUSES AND APPLICABLE LANDSCAPING IS COMPLETE.

BASIS OF BEARINGS

ALL BEARINGS ARE GRID BEARINGS OF THE COLORADO STATE PLANE COORDINATE SYSTEM, CENTRAL ZONE, NORTH AMERICAN DATUM 1983. THE BEARING OF THE LINE BETWEEN THE SOUTHWEST CORNER OF SECTION 1, T13S, R95W AND THE WEST QUARTER CORNER SECTION 1, T13S, R95W IS N001°3'46\"/>

BENCHMARK

THE SOUTHWESTERLY CORNER OF LOT 1 WOODMAN HILLS FILING NO. 4, MONUMENTED BY A YELLOW PLASTIC SURVEYORS CAP ON A NO. 4 REBAR L# 24954 ELEVATION = 6947.67

CAUTION - NOTICE TO CONTRACTOR

- 1. ALL UTILITY LOCATIONS SHOWN ARE BASED ON MAPS PROVIDED BY THE APPROPRIATE UTILITY COMPANY AND FIELD SURFACE EVIDENCE AT THE TIME OF SURVEY AND IS TO BE CONSIDERED AN APPROXIMATE LOCATION ONLY. IT IS THE CONTRACTOR'S RESPONSIBILITY TO FIELD VERIFY THE LOCATION OF ALL UTILITIES, PUBLIC OR PRIVATE, WHETHER SHOWN ON THE PLANS OR NOT, PRIOR TO CONSTRUCTION. REPORT ANY DISCREPANCIES TO THE ENGINEER PRIOR TO CONSTRUCTION.
- 2. WHERE A PROPOSED UTILITY CROSSES AN EXISTING UTILITY, IT IS THE CONTRACTOR'S RESPONSIBILITY TO FIELD VERIFY THE HORIZONTAL AND VERTICAL LOCATION OF SUCH EXISTING UTILITY, EITHER THROUGH POT-HOLING OR ALTERNATIVE METHOD. REPORT INFORMATION TO THE ENGINEER PRIOR TO CONSTRUCTION.



1155 Kelly Johnson Blvd., Suite 305
Colorado Springs, CO 80920
719.900.7220
GallowayUS.com



COPYRIGHT
THESE PLANS ARE AN INSTRUMENT OF SERVICE AND ARE THE PROPERTY OF GALLOWAY, AND MAY NOT BE DUPLICATED, DISCLOSED, OR REPRODUCED WITHOUT THE WRITTEN CONSENT OF GALLOWAY. COPYRIGHTS AND INFRINGEMENTS WILL BE ENFORCED AND PROSECUTED.



**CONSTRUCTION DOCUMENTS
FALCON MEADOWS AT BENT GRASS FILING NO. 4
FOR
CHALLENGER COMMUNITIES, LLC**

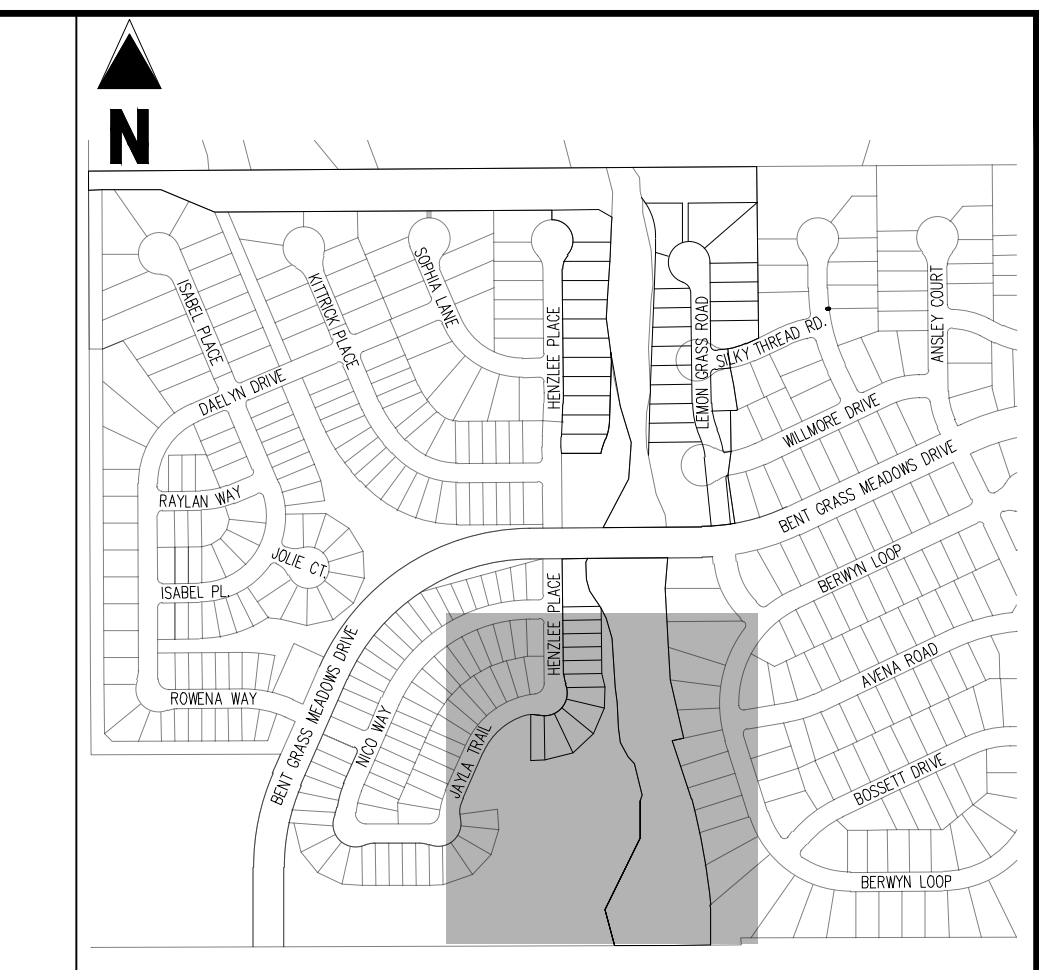
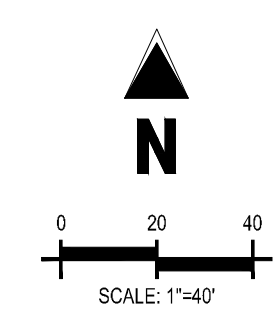
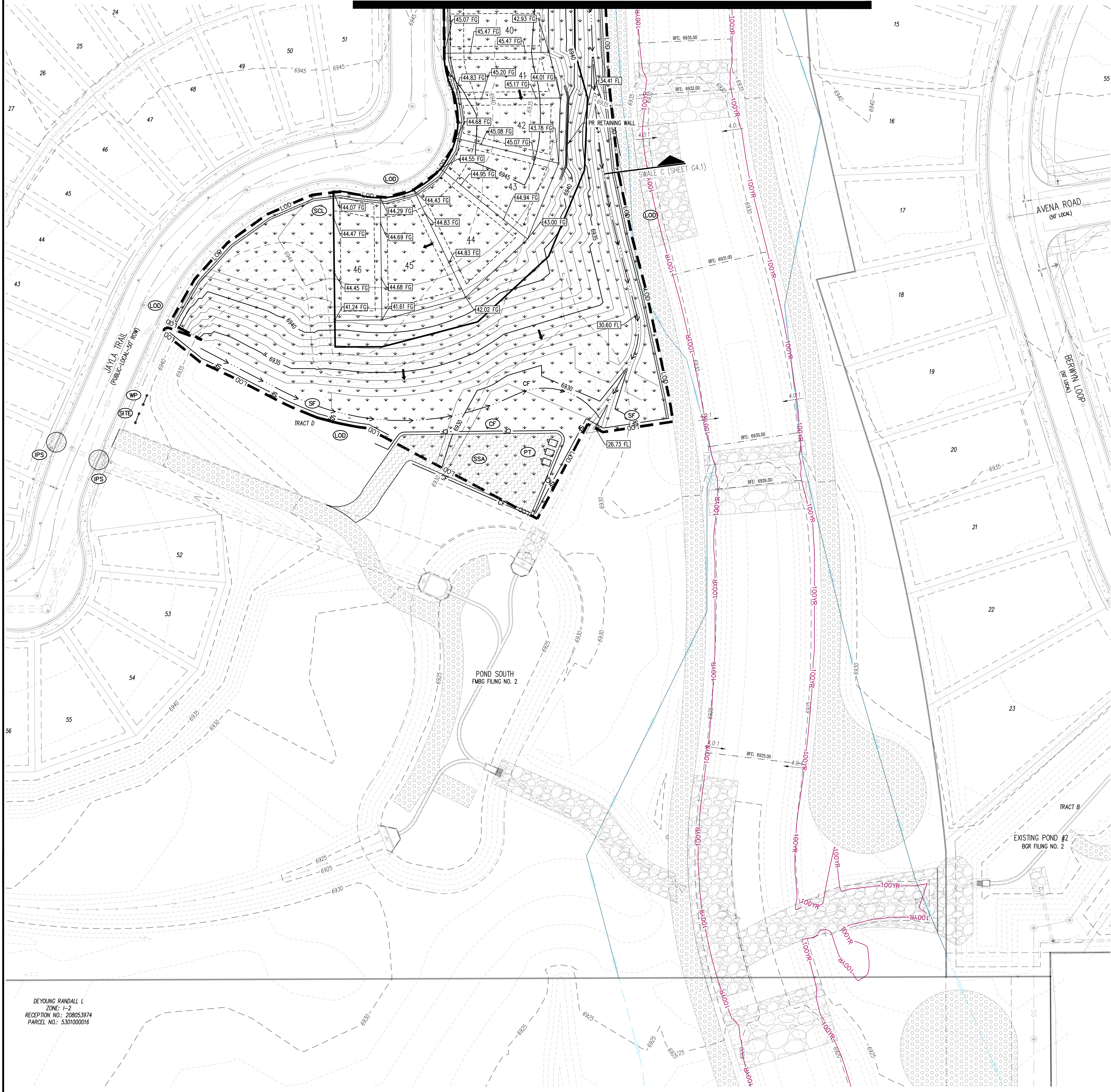
**BENT GRASS MEADOWS DRIVE & MERIDIAN ROAD
FALCON, CO 80831 - EL PASO COUNTY**

#	Date	Issue / Description	Init.

Project No: CLH000021
Drawn By: JDM, BLB
Checked By: BAS, CMWJ
Date: 05/17/2024

**GRADING & EROSION
CONTROL INTERIM PLAN**





EROSION CONTROL LEGEND

- Legend items including LOD (Limits of Disturbance / Construction), SF (Silt Fence), CF (Construction Fence), IPS (Sump Inlet Protection), IPO (On-Grade Inlet Protection), RS (Rock Socks), VTC (Vehicle Tracking Control), CWA (Concrete Washout Area), SSA (Stabilized Staging Area), SC (Proposed Sawcut Line), PT (Portable Toilet), SP (Stockpile), CD (Check Dam), RR (Riprap Outfall Pads), SITE (Contacts and Permits), WP (Washout Posting), SBB (Straw Bale Barrier), SB (Sediment Basin), SCL (Sediment Control Log), and SM (Seeding & Mulching).

LEGEND

- Legend items including Existing Property Line, Proposed Project Boundary, Proposed Right of Way Line, Existing Lot Line, Proposed Lot Line, Existing Easement, Proposed Easement, Existing Subdivision Buffer, Existing Major Contour, Existing Minor Contour, Proposed Major Contour, Proposed Minor Contour, Existing Storm Drain Pipe, Proposed Storm Drain Pipe, Existing Water Line, Proposed Water Line, Existing Sanitary Sewer Line, Proposed Sanitary Sewer Line, Existing Drainage Feature Outline, Proposed Drainage Feature Outline, Existing Swale with Flow Direction, Proposed Swale with Flow Direction, 100-Year FEMA Floodplain, Approximate Future Floodplain Limits, Proposed Gravel per EOM Table D-7, Existing Concrete Paving, Existing Gravel per EOM Table D-7, Existing 1" to 2" Crushed Rock, Existing Riprap, Existing Grouted Boulders, Proposed Lot #, Existing Lot #, Proposed ADA Ramp, Spot Elevation - High Point, Spot Elevation - Low Point, Spot Elevation - Finish Grade, Existing Slope (Percent), Existing Slope (Rise:Run), Proposed Slope (Percent), Proposed Slope (Rise:Run), and Flow Arrow.

NOTES

- Notes 1-10 detailing construction requirements, including spot elevations, utility protection, grading, riprap specifications, and storm drain construction.

EROSION CONTROL PHASING SCHEDULE

Table with 2 columns: PHASE and DESCRIPTION. Rows include INITIAL (Site posting, silt fence, inlet protection), INTERM (Staging area, riprap, storm sewer), and FINAL (Curb/gutter, pavement, utility construction).

BASIS OF BEARINGS

ALL BEARINGS ARE GRID BEARINGS OF THE COLORADO STATE PLANE COORDINATE SYSTEM, CENTRAL ZONE, NORTH AMERICAN DATUM 1983. THE BEARING OF THE LINE BETWEEN THE SOUTHWEST CORNER OF SECTION 1, T13S, R65W AND THE WEST QUARTER CORNER SECTION 1, T13S, R65W IS N00°13'46"W AND MONUMENTED AS SHOWN.

BENCHMARK

THE SOUTHWESTERLY CORNER OF LOT 1 WOODMEN HILLS FILING NO. 4, MONUMENTED BY A YELLOW PLASTIC SURVEYORS CAP ON A NO. 4 REBAR L# 24954 ELEVATION = 6947.67

CAUTION - NOTICE TO CONTRACTOR

- Notice to contractor regarding utility locations, field verification, and reporting discrepancies.



Galloway logo and contact information: 1155 Kelly Johnson Blvd., Suite 305, Colorado Springs, CO 80920, 719.900.7220, GallowayUS.com. Includes a professional seal for Chad R. Galloway, State of Colorado, License No. 38764, dated 12/21/2024.

COPYRIGHT: THESE PLANS ARE AN INSTRUMENT OF SERVICE AND ARE THE PROPERTY OF GALLOWAY, AND MAY NOT BE DUPLICATED, DISCLOSED, OR REPRODUCED WITHOUT THE WRITTEN CONSENT OF GALLOWAY. COPYRIGHTS AND INFRINGEMENTS WILL BE ENFORCED AND PROSECUTED.

CHALLENGER HOMES logo.

CONSTRUCTION DOCUMENTS
FALCON MEADOWS AT BENT GRASS FILING NO. 4
FOR
CHALLENGER COMMUNITIES, LLC
BENT GRASS MEADOWS DRIVE & MERIDIAN ROAD
FALCON, CO 80831 - EL PASO COUNTY

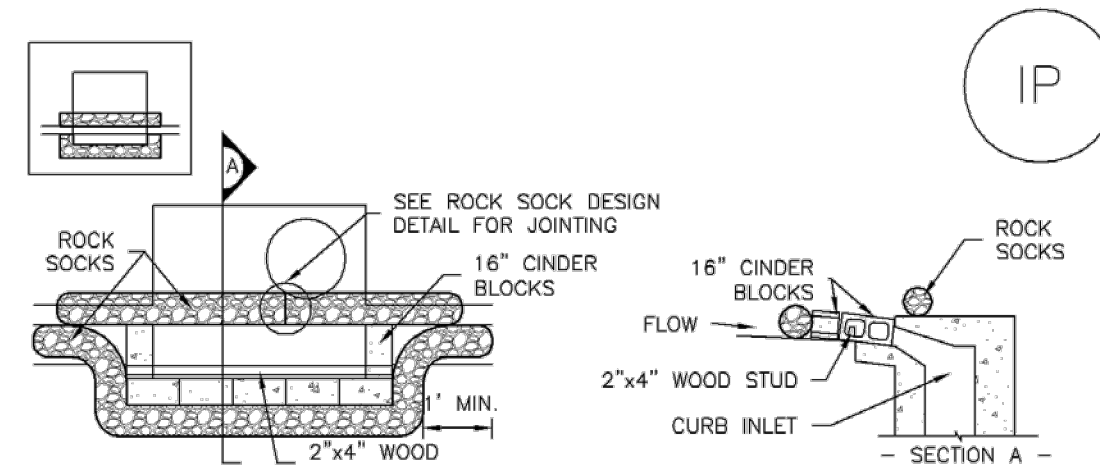
Revision table with columns: #, Date, Issue / Description, Init.

Project No: CLH000021
Drawn By: JDM, BLB
Checked By: BAS, CMWJ
Date: 05/17/2024

GRADING & EROSION CONTROL FINAL PLAN

SC-6

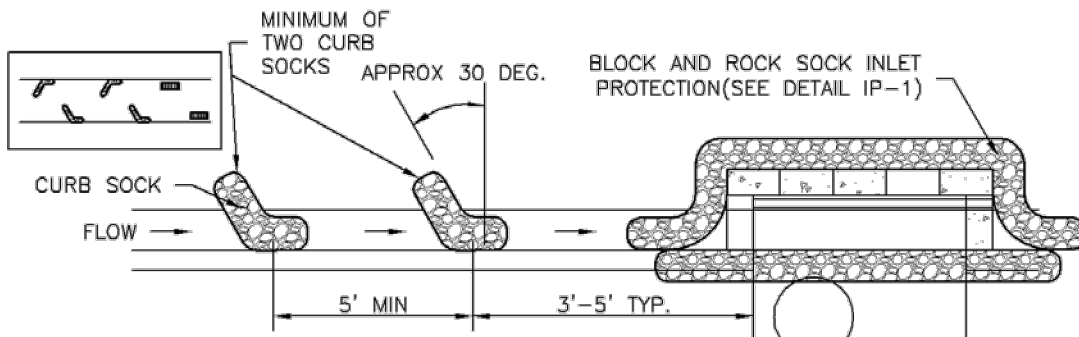
Inlet Protection (IP)



IP-1. BLOCK AND ROCK SOCK SUMP OR ON GRADE INLET PROTECTION

BLOCK AND CURB SOCK INLET PROTECTION INSTALLATION NOTES

- 1. SEE ROCK SOCK DESIGN DETAIL FOR INSTALLATION REQUIREMENTS.
2. CONCRETE "CINDER" BLOCKS SHALL BE LAID ON THEIR SIDES AROUND THE INLET IN A SINGLE ROW, ABUTTING ONE ANOTHER WITH THE OPEN END FACING AWAY FROM THE CURB.
3. GRAVEL BAGS SHALL BE PLACED AROUND CONCRETE BLOCKS, CLOSELY ABUTTING ONE ANOTHER AND JOINTED TOGETHER IN ACCORDANCE WITH ROCK SOCK DESIGN DETAIL.



IP-2. CURB ROCK SOCKS UPSTREAM OF INLET PROTECTION

CURB ROCK SOCK INLET PROTECTION INSTALLATION NOTES

- 1. SEE ROCK SOCK DESIGN DETAIL INSTALLATION REQUIREMENTS.
2. PLACEMENT OF THE SOCK SHALL BE APPROXIMATELY 30 DEGREES FROM PERPENDICULAR IN THE OPPOSITE DIRECTION OF FLOW.
3. SOCKS ARE TO BE FLUSH WITH THE CURB AND SPACED A MINIMUM OF 5 FEET APART.
4. AT LEAST TWO CURB SOCKS IN SERIES ARE REQUIRED UPSTREAM OF ON-GRADE INLETS.

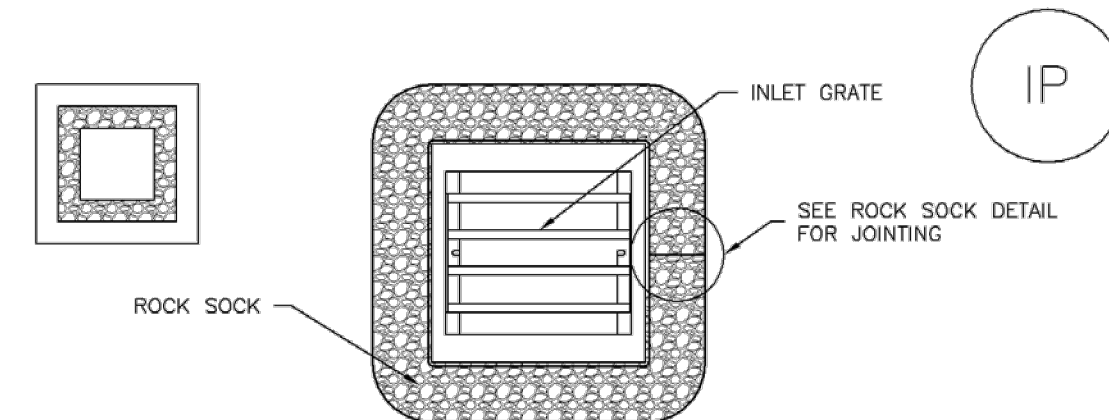
IP-4

Urban Drainage and Flood Control District
Urban Storm Drainage Criteria Manual Volume 3

August 2013

Inlet Protection (IP)

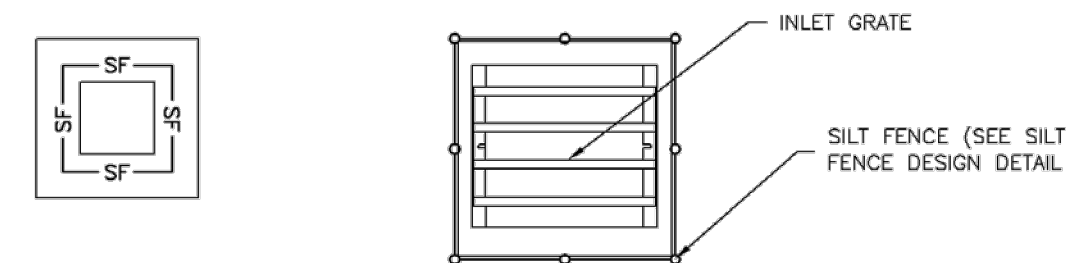
SC-6



IP-3. ROCK SOCK SUMP/AREA INLET PROTECTION

ROCK SOCK SUMP/AREA INLET PROTECTION INSTALLATION NOTES

- 1. SEE ROCK SOCK DESIGN DETAIL FOR INSTALLATION REQUIREMENTS.
2. STRAW WATTLES/SEDIMENT CONTROL LOGS MAY BE USED IN PLACE OF ROCK SOCKS FOR INLETS IN PERVIOUS AREAS. INSTALL PER SEDIMENT CONTROL LOG DETAIL.



IP-4. SILT FENCE FOR SUMP INLET PROTECTION

SILT FENCE INLET PROTECTION INSTALLATION NOTES

- 1. SEE SILT FENCE DESIGN DETAIL FOR INSTALLATION REQUIREMENTS.
2. POSTS SHALL BE PLACED AT EACH CORNER OF THE INLET AND AROUND THE EDGES AT A MAXIMUM SPACING OF 3 FEET.
3. STRAW WATTLES/SEDIMENT CONTROL LOGS MAY BE USED IN PLACE OF SILT FENCE FOR INLETS IN PERVIOUS AREAS. INSTALL PER SEDIMENT CONTROL LOG DETAIL.

August 2013

Urban Drainage and Flood Control District
Urban Storm Drainage Criteria Manual Volume 3

IP-5

SC-6

Inlet Protection (IP)

GENERAL INLET PROTECTION INSTALLATION NOTES

- 1. SEE PLAN VIEW FOR:
- LOCATION OF INLET PROTECTION.
- TYPE OF INLET PROTECTION (IP.1, IP.2, IP.3, IP.4, IP.5, IP.6)
2. INLET PROTECTION SHALL BE INSTALLED PROMPTLY AFTER INLET CONSTRUCTION OR PAVING IS COMPLETE, (TYPICALLY WITHIN 48 HOURS). IF A RAINFALL/RUNOFF EVENT IS FORECAST, INSTALL INLET PROTECTION PRIOR TO ONSET OF EVENT.

INLET PROTECTION MAINTENANCE NOTES

- 1. INSPECT BMPs EACH WORKDAY, AND MAINTAIN THEM IN EFFECTIVE OPERATING CONDITION. MAINTENANCE OF BMPs SHOULD BE PROACTIVE, NOT REACTIVE. INSPECT BMPs AS SOON AS POSSIBLE (AND ALWAYS WITHIN 24 HOURS) FOLLOWING A STORM THAT CAUSES SURFACE EROSION, AND PERFORM NECESSARY MAINTENANCE.
2. FREQUENT OBSERVATIONS AND MAINTENANCE ARE NECESSARY TO MAINTAIN BMPs IN EFFECTIVE OPERATING CONDITION. INSPECTIONS AND CORRECTIVE MEASURES SHOULD BE DOCUMENTED THOROUGHLY.
3. WHERE BMPs HAVE FAILED, REPAIR OR REPLACEMENT SHOULD BE INITIATED UPON DISCOVERY OF THE FAILURE.
4. SEDIMENT ACCUMULATED UPSTREAM OF INLET PROTECTION SHALL BE REMOVED AS NECESSARY TO MAINTAIN BMP EFFECTIVENESS, TYPICALLY WHEN STORAGE VOLUME REACHES 50% OF CAPACITY, A DEPTH OF 6" WHEN SILT FENCE IS USED, OR 1/4 OF THE HEIGHT FOR STRAW BALES.
5. INLET PROTECTION IS TO REMAIN IN PLACE UNTIL THE UPSTREAM DISTURBED AREA IS PERMANENTLY STABILIZED, UNLESS THE LOCAL JURISDICTION APPROVES EARLIER REMOVAL OF INLET PROTECTION IN STREETS.
6. WHEN INLET PROTECTION AT AREA INLETS IS REMOVED, THE DISTURBED AREA SHALL BE COVERED WITH TOP SOIL, SEEDED AND MULCHED, OR OTHERWISE STABILIZED IN A MANNER APPROVED BY THE LOCAL JURISDICTION.

(DETAIL ADAPTED FROM TOWN OF PARKER, COLORADO AND CITY OF AURORA, COLORADO, NOT AVAILABLE IN AUTOCAD)

NOTE: MANY JURISDICTIONS HAVE BMP DETAILS THAT VARY FROM UDFCD STANDARD DETAILS. CONSULT WITH LOCAL JURISDICTIONS AS TO WHICH DETAIL SHOULD BE USED WHEN DIFFERENCES ARE NOTED.

NOTE: THE DETAILS INCLUDED WITH THIS FACT SHEET SHOW COMMONLY USED, CONVENTIONAL METHODS OF INLET PROTECTION IN THE DENVER METROPOLITAN AREA. THERE ARE MANY PROPRIETARY INLET PROTECTION METHODS ON THE MARKET. UDFCD NEITHER ENDORSES NOR DISCOURAGES USE OF PROPRIETARY INLET PROTECTION; HOWEVER, IN THE EVENT PROPRIETARY METHODS ARE USED, THE APPROPRIATE DETAIL FROM THE MANUFACTURER MUST BE INCLUDED IN THE SWMP AND THE BMP MUST BE INSTALLED AND MAINTAINED AS SHOWN IN THE MANUFACTURER'S DETAILS.

NOTE: SOME MUNICIPALITIES DISCOURAGE OR PROHIBIT THE USE OF STRAW BALES FOR INLET PROTECTION. CHECK WITH LOCAL JURISDICTION TO DETERMINE IF STRAW BALE INLET PROTECTION IS ACCEPTABLE.

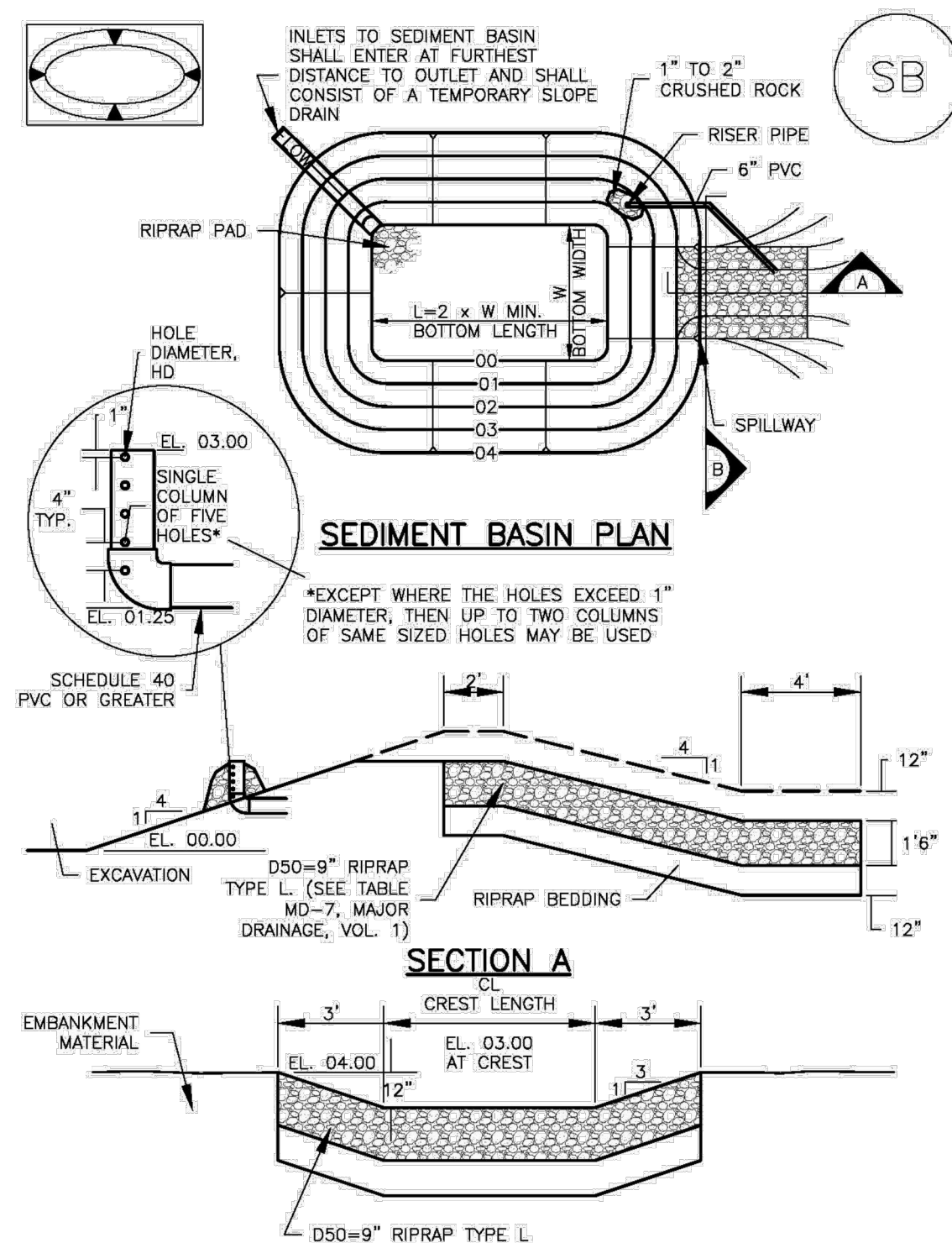
IP-8

Urban Drainage and Flood Control District
Urban Storm Drainage Criteria Manual Volume 3

August 2013

Sediment Basin (SB)

SC-7



August 2013

Urban Drainage and Flood Control District
Urban Storm Drainage Criteria Manual Volume 3

SB-5

SC-7

Sediment Basin (SB)

TABLE SB-1. SIZING INFORMATION FOR STANDARD SEDIMENT BASIN. Table with 4 columns: Upstream Drainage Area (ac), Basin Bottom Width (ft), Spillway Crest Length (ft), and Hole Diameter (in). Rows 1-15.

SEDIMENT BASIN INSTALLATION NOTES

- 1. SEE PLAN VIEW FOR:
- LOCATION OF SEDIMENT BASIN.
- TYPE OF BASIN (STANDARD BASIN OR NONSTANDARD BASIN).
- FOR STANDARD BASIN, BOTTOM WIDTH W, CREST LENGTH CL, AND HOLE DIAMETER, HD.
- FOR NONSTANDARD BASIN, SEE CONSTRUCTION DRAWINGS FOR DESIGN OF BASIN INCLUDING RISER HEIGHT H, NUMBER OF COLUMNS N, HOLE DIAMETER HD AND PIPE DIAMETER D.
2. FOR STANDARD BASIN, BOTTOM DIMENSION MAY BE MODIFIED AS LONG AS BOTTOM AREA IS NOT REDUCED.
3. SEDIMENT BASINS SHALL BE INSTALLED PRIOR TO ANY OTHER LAND-DISTURBING ACTIVITY THAT RELIES ON ON BASINS AS A STORMWATER CONTROL.
4. EMBANKMENT MATERIAL SHALL CONSIST OF SOIL FREE OF DEBRIS, ORGANIC MATERIAL, AND ROCKS OR CONCRETE GREATER THAN 3 INCHES AND SHALL HAVE A MINIMUM OF 15 PERCENT BY WEIGHT PASSING THE NO. 200 SIEVE.
5. EMBANKMENT MATERIAL SHALL BE COMPACTED TO AT LEAST 95 PERCENT OF MAXIMUM DENSITY IN ACCORDANCE WITH ASTM D698.
6. PIPE SCH 40 OR GREATER SHALL BE USED.
7. THE DETAILS SHOWN ON THESE SHEETS PERTAIN TO STANDARD SEDIMENT BASIN(S) FOR DRAINAGE AREAS LESS THAN 15 ACRES. SEE CONSTRUCTION DRAWINGS FOR EMBANKMENT, STORAGE VOLUME, SPILLWAY, OUTLET, AND OUTLET PROTECTION DETAILS FOR ANY SEDIMENT BASIN(S) THAT HAVE BEEN INDIVIDUALLY DESIGNED FOR DRAINAGE AREAS LARGER THAN 15 ACRES.

SB-6

Urban Drainage and Flood Control District
Urban Storm Drainage Criteria Manual Volume 3

August 2013

Sediment Basin (SB)

SC-7

SEDIMENT BASIN MAINTENANCE NOTES

- 1. INSPECT BMPs EACH WORKDAY, AND MAINTAIN THEM IN EFFECTIVE OPERATING CONDITION. MAINTENANCE OF BMPs SHOULD BE PROACTIVE, NOT REACTIVE. INSPECT BMPs AS SOON AS POSSIBLE (AND ALWAYS WITHIN 24 HOURS) FOLLOWING A STORM THAT CAUSES SURFACE EROSION, AND PERFORM NECESSARY MAINTENANCE.
2. FREQUENT OBSERVATIONS AND MAINTENANCE ARE NECESSARY TO MAINTAIN BMPs IN EFFECTIVE OPERATING CONDITION. INSPECTIONS AND CORRECTIVE MEASURES SHOULD BE DOCUMENTED THOROUGHLY.
3. WHERE BMPs HAVE FAILED, REPAIR OR REPLACEMENT SHOULD BE INITIATED UPON DISCOVERY OF THE FAILURE.
4. SEDIMENT ACCUMULATED IN BASIN SHALL BE REMOVED AS NEEDED TO MAINTAIN BMP EFFECTIVENESS, TYPICALLY WHEN SEDIMENT DEPTH REACHES ONE FOOT (I.E., TWO FEET BELOW THE SPILLWAY CREST).
5. SEDIMENT BASINS ARE TO REMAIN IN PLACE UNTIL THE UPSTREAM DISTURBED AREA IS STABILIZED AND GRASS COVER IS ACCEPTED BY THE LOCAL JURISDICTION.
6. WHEN SEDIMENT BASINS ARE REMOVED, ALL DISTURBED AREAS SHALL BE COVERED WITH TOPSOIL, SEEDED AND MULCHED OR OTHERWISE STABILIZED AS APPROVED BY LOCAL JURISDICTION.

(DETAILS ADAPTED FROM DOUGLAS COUNTY, COLORADO)

NOTE: MANY JURISDICTIONS HAVE BMP DETAILS THAT VARY FROM UDFCD STANDARD DETAILS. CONSULT WITH LOCAL JURISDICTIONS AS TO WHICH DETAIL SHOULD BE USED WHEN DIFFERENCES ARE NOTED.

August 2013

Urban Drainage and Flood Control District
Urban Storm Drainage Criteria Manual Volume 3

SB-7



COPYRIGHT

THESE PLANS ARE AN INSTRUMENT OF SERVICE AND ARE THE PROPERTY OF GALLOWAY, AND MAY NOT BE DUPLICATED, DISCLOSED, OR REPRODUCED WITHOUT THE WRITTEN CONSENT OF GALLOWAY. COPYRIGHTS AND INFRINGEMENTS WILL BE ENFORCED AND PROSECUTED.



CONSTRUCTION DOCUMENTS
FALCON MEADOWS AT BENT GRASS FILING NO. 4
FOR
CHALLENGER COMMUNITIES, LLC

BENT GRASS MEADOWS DRIVE & MERIDIAN ROAD
FALCON, CO 80831 - EL PASO COUNTY

Table with 4 columns: #, Date, Issue / Description, Init. It contains a list of revision entries.

Project No: CLH000021
Drawn By: JDM, BLB
Checked By: BAS, CMWJ
Date: 05/17/2024

GEC DETAILS

