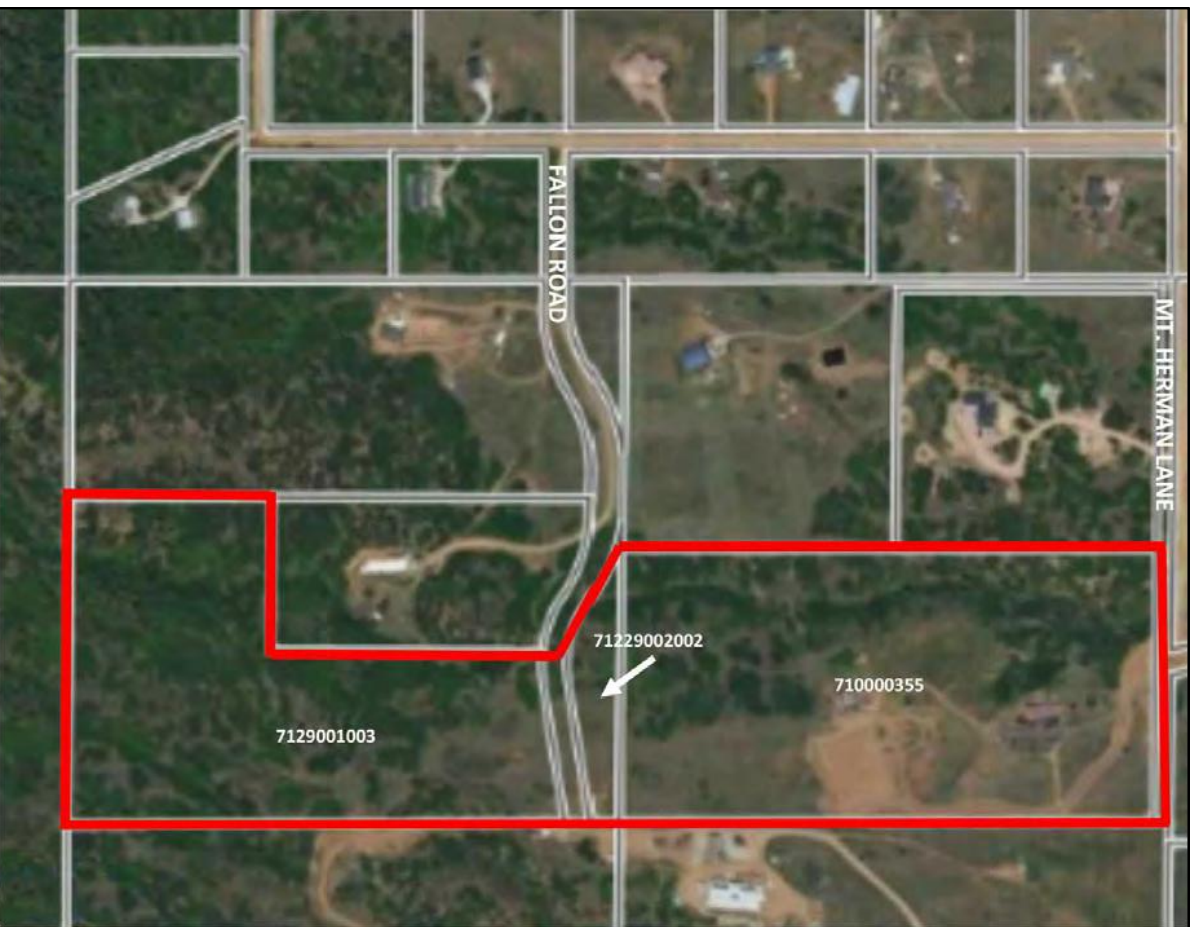


OWNER NAME AND ADDRESS:
STEVE & CATHY ROSCIO
FALL MOUNTAIN FARM COMPANY
16300 MT. HERMAN LANE
MONUMENT, COLORADO 80132
PHONE: (719) 800-1244
EMAIL: info@FallMountainFarm.com

PLAN PREPARER:
WILLIAM GUMAN & ASSOC., LTD.
731 N. WEBER STREET
COLORADO SPRINGS, COLORADO 80903
PHONE: (719) 633-9700
EMAIL: bill@guman.net

APPLICANT:
WILLIAM GUMAN & ASSOC., LTD.
731 N. WEBER STREET
COLORADO SPRINGS, COLORADO 80903
PHONE: (719) 633-9700
EMAIL: bill@guman.net

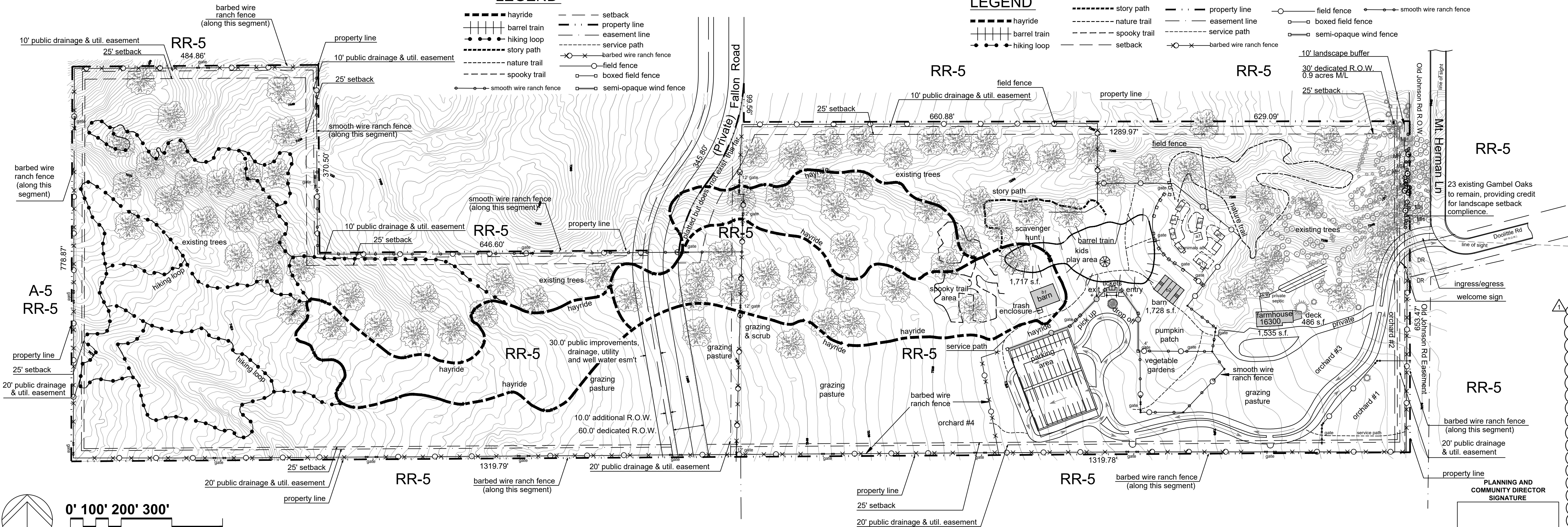
VICINITY MAP



PHOTOMETRY SHEET INDEX	
SHEET	TITLE
ELECTRICAL	
DP0	ELECTRICAL COVER SHEET
DP1A	ELECTRICAL PHOTOMETRIC SITE PLAN - AREA A
DP1B	ELECTRICAL PHOTOMETRIC SITE PLAN - AREA B
DP1C	ELECTRICAL PHOTOMETRIC SITE PLAN - AREA C
DP2	CUT SHEETS

LEGEND

LEGEND



FALL MOUNTAIN FARM
DEVELOPMENT PHOTOMETRIC SITE PLAN

16300 MOUNT HERMAN, MONUMENT, CO 80132

REVISIONS	MARK	DATE	COMMENT
1	Δ	04/22/2022	ISSUE FOR PLANNING REVIEW
2	Δ	12/08/2022	PLANNING REVIEW COMMENTS

ELECTRICAL
COVER SHEET

© COPYRIGHT 2022 ALL DRAWN & WRITTEN INFORMATION APPEARING HEREIN SHALL NOT BE DUPLICATED, DISCLOSED OR OTHERWISE USED WITHOUT WRITTEN CONSENT OF PLANT ENGINEERING CONSULTANTS.

PROJECT	22037
DATE	12/08/2022
DRAWN	RSM
CHECKED	MPP

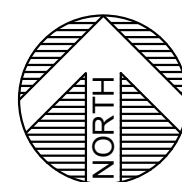
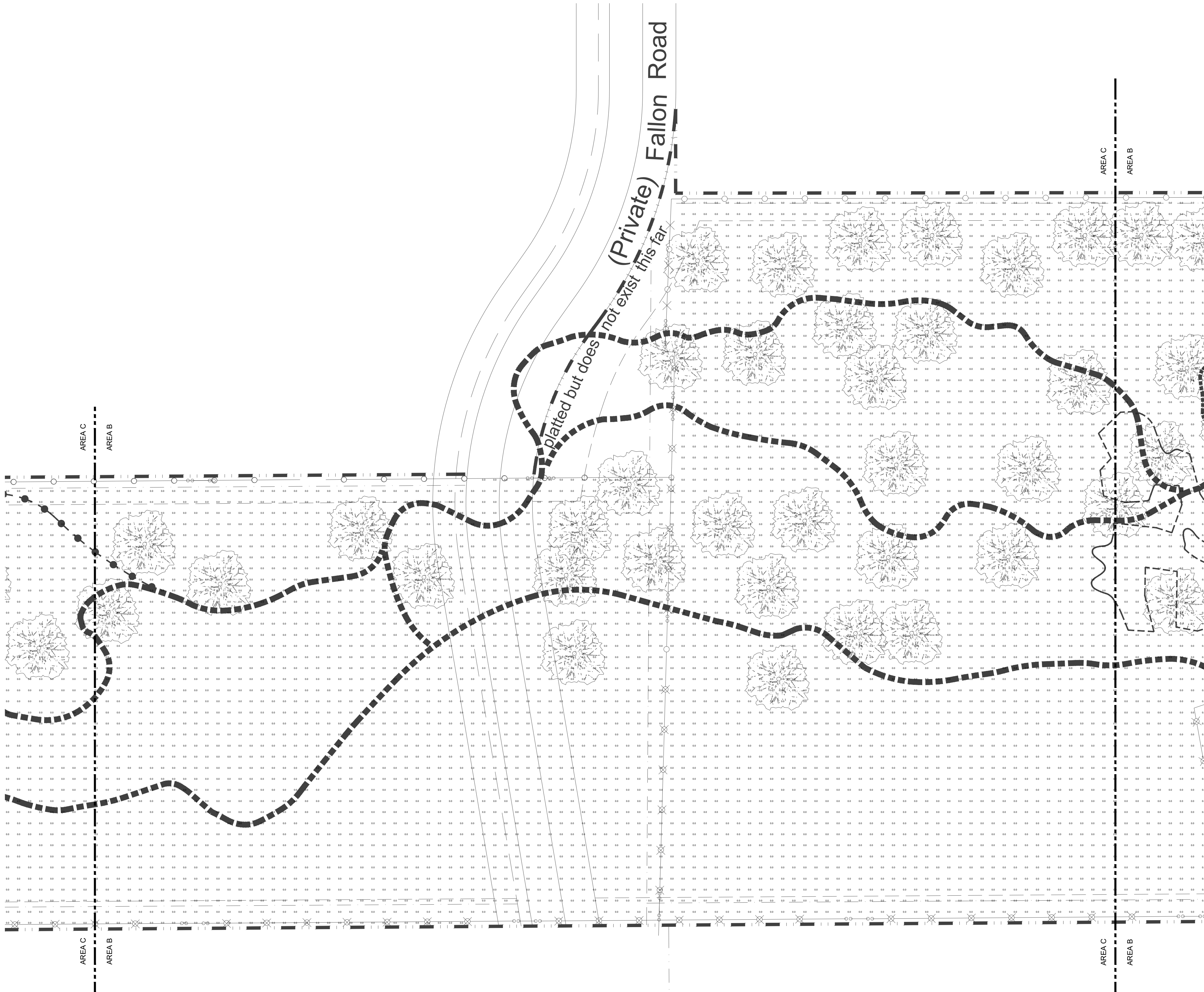
SHEET

DP0



PLANT
ENGINEERING CONSULTANTS
320 W FILLMORE SUITE 100 COLORADO SPRINGS CO 80907
719 473 7077
www.planted.com

12/8/2022 3:58:18 PM russell.mead
C:\projects\2022\22037 fall mountain farm site.dwg
12/8/2022 3:58:18 PM russell.mead

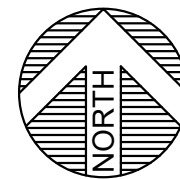
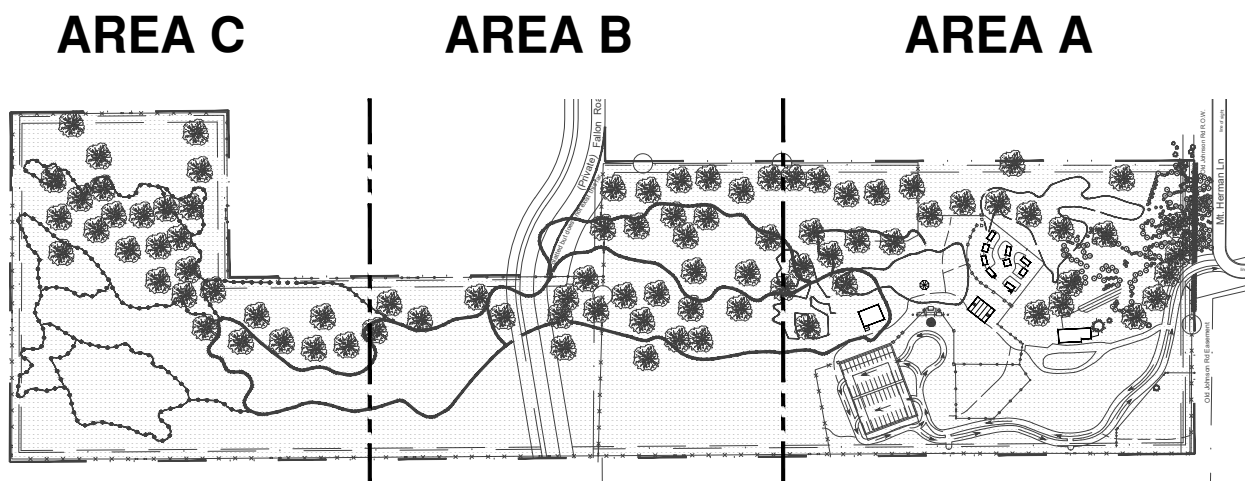


ELECTRICAL PHOTOMETRIC SITE PLAN - AREA B

SCALE: #####

GENERAL PHOTOMETRY NOTES

- A. THESE PHOTOMETRIC CALCULATIONS ARE BASED ON MANUFACTURER'S IES FILES AND 0.85 LIGHT DEPRECIATION FACTOR.
- B. ACTUAL ILLUMINANCE LEVELS MAY DIFFER FROM THE FOOTCANDLE LEVELS SHOWN DUE TO VARIABLE FIELD CONDITIONS, SUCH AS NEARBY EXISTING LUMINAIRES, LUMINAIRE DIRT DEPRECIATION, LANDSCAPING, AND FUTURE DEVELOPMENTS.
- C. THIS PLAN IS BASED ON THE INFORMATION AVAILABLE. THE LUMINAIRE LOCATIONS SHOWN MUST BE COORDINATED WITH EXISTING OR FUTURE FIELD CONDITIONS.



KEY PLAN

SCALE: NTS

PLANT
ENGINEERING CONSULTANTS
320 W FILLMORE SUITE 100 COLORADO SPRINGS CO 80907
719 473 7077
www.planted.com



FALL MOUNTAIN FARM
DEVELOPMENT PHOTOMETRIC SITE PLAN
16300 MOUNT HERMAN, MONUMENT, CO 80132

REVISIONS	MARK	DATE	COMMENT
	1	04/22/2022	ISSUE FOR PLANNING REVIEW
	2	12/08/2022	PLANNING REVIEW COMMENTS

ELECTRICAL
PHOTOMETRIC
SITE PLAN - AREA
B

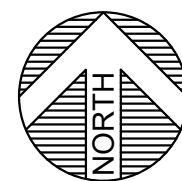
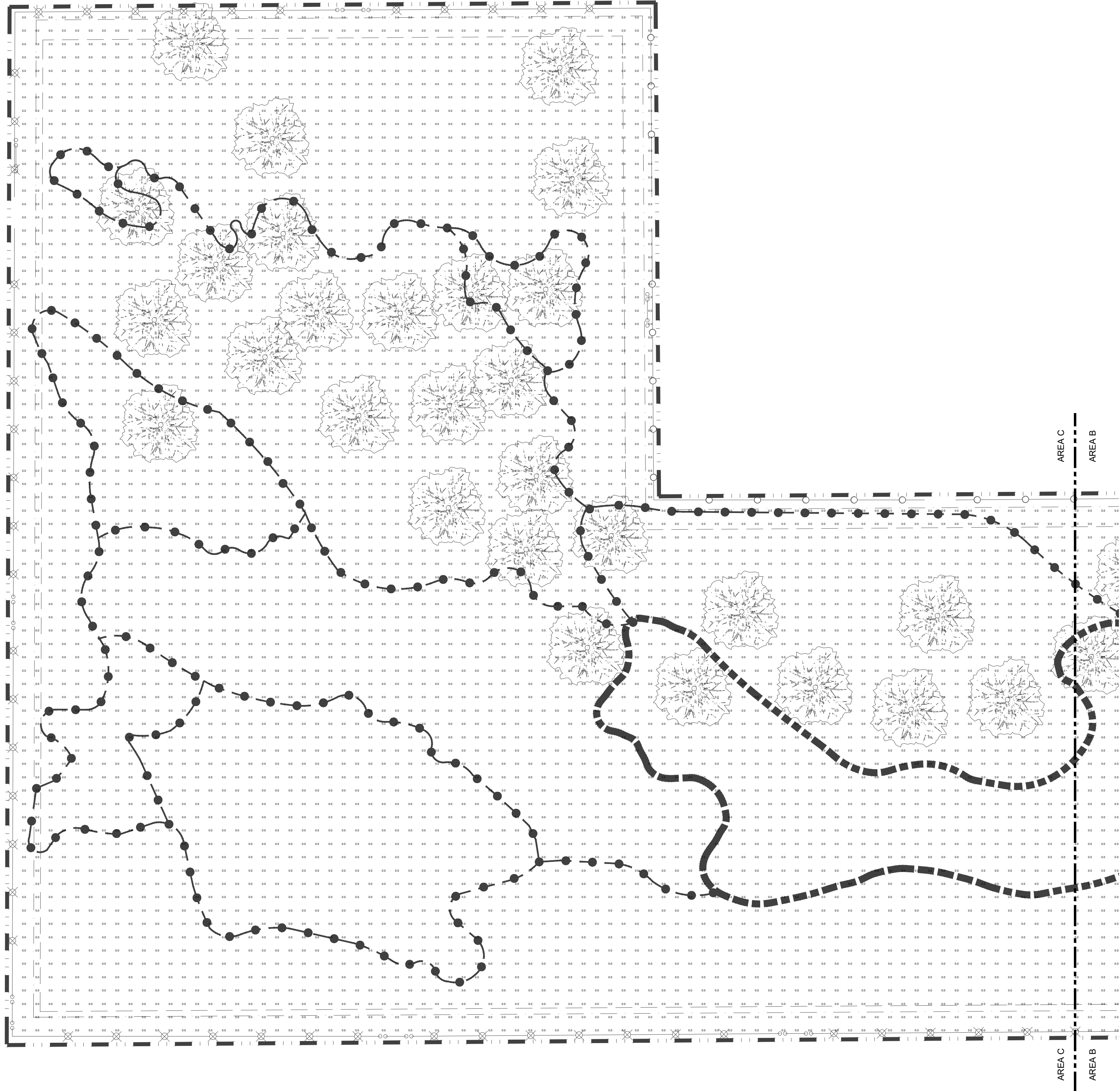
© COPYRIGHT 2022 ALL DRAWN & WRITTEN INFORMATION APPEARING HEREIN SHALL NOT BE REPRODUCED, DISCLOSED OR OTHERWISE USED WITHOUT WRITTEN CONSENT OF PLANT ENGINEERING CONSULTANTS.

PROJECT	22037
DATE	12/08/2022
DRAWN	RSM
CHECKED	MPP

SHEET

DP1B

12/8/2022 3:58:15 PM rnsel.mxd
c:\projects\2022\22037 fall mountain farm site.dwg
12/8/2022 3:58:15 PM rnsel.mxd
c:\projects\2022\22037 fall mountain farm site.dwg

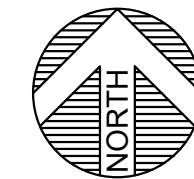
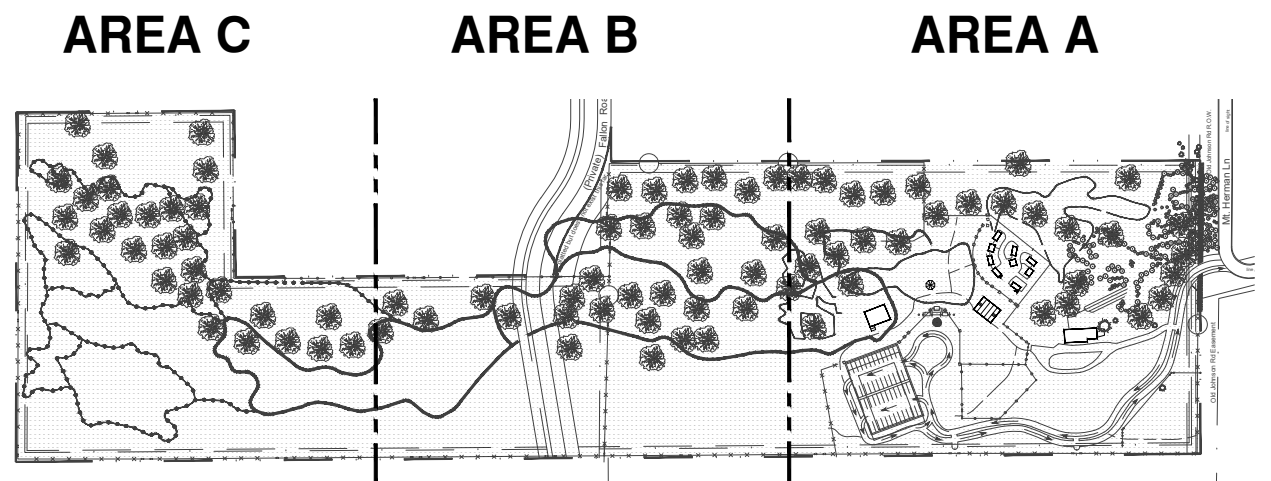


ELECTRICAL PHOTOMETRIC SITE PLAN - AREA C

SCALE: 1" = 50'-0"

GENERAL PHOTOMETRY NOTES

- THESE PHOTOMETRIC CALCULATIONS ARE BASED ON MANUFACTURER'S IES FILES AND 0.85 LIGHT DEPRECIATION FACTOR.
- ACTUAL ILLUMINANCE LEVELS MAY DIFFER FROM THE FOOTCANDLE LEVELS SHOWN DUE TO VARIABLE FIELD CONDITIONS, SUCH AS NEARBY EXISTING LUMINAIRES, LUMINAIRE DIRT DEPRECIATION, LANDSCAPING, AND FUTURE DEVELOPMENTS.
- THIS PLAN IS BASED ON THE INFORMATION AVAILABLE. THE LUMINAIRE LOCATIONS SHOWN MUST BE COORDINATED WITH EXISTING OR FUTURE FIELD CONDITIONS.



KEY PLAN

SCALE: NTS

PLANT
ENGINEERING CONSULTANTS
320 W FILLMORE SUITE 100 COLORADO SPRINGS CO 80907
719 473 7077
www.planted.com



FALL MOUNTAIN FARM DEVELOPMENT PHOTOMETRIC SITE PLAN

16300 MOUNT HERMAN, MONUMENT, CO 80132

REVISIONS	MARK	DATE	COMMENT
	1	04/22/2022	ISSUE FOR PLANNING REVIEW
	2	12/08/2022	PLANNING REVIEW COMMENTS

ELECTRICAL
PHOTOMETRIC
SITE PLAN - AREA
C

© COPYRIGHT 2022 ALL DRAWN & WRITTEN INFORMATION APPEARING HEREIN SHALL NOT BE REPRODUCED, DISCLOSED OR OTHERWISE USED WITHOUT WRITTEN CONSENT OF PLANT ENGINEERING CONSULTANTS.

PROJECT	22037
DATE	12/08/2022
DRAWN	RSM
CHECKED	MPP

SHEET

DP1C

