

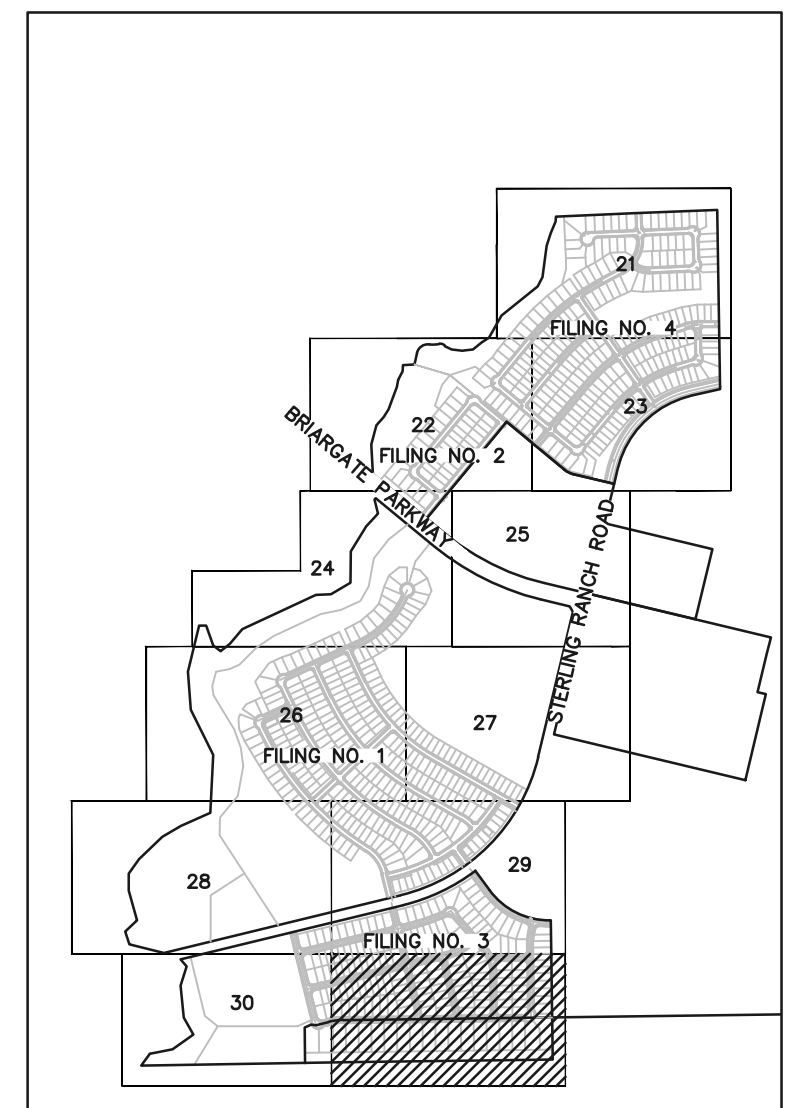
MATCHLINE ~ (SEE SHEET 29)



MATCHLINE ~ (SEE SHEET 30)

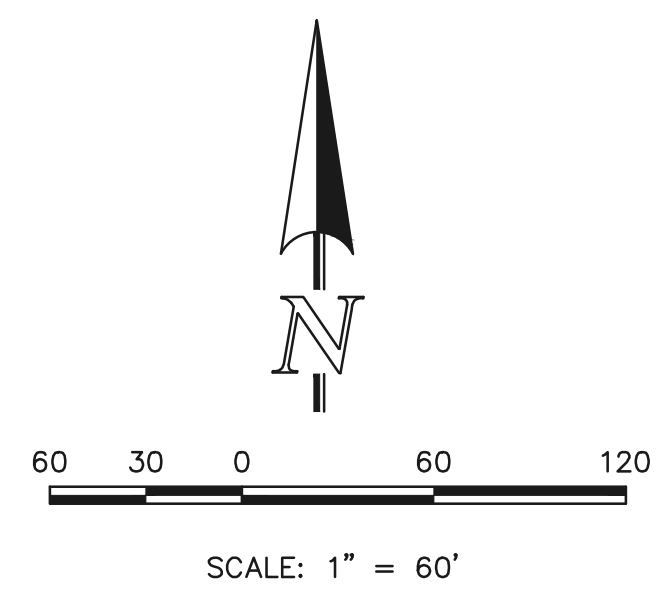
LEGEND

- PROPOSED CONTOUR-10
- PROPOSED CONTOUR-2
- EXISTING CONTOUR-10
- EXISTING CONTOUR-2
- DIRECTION OF FLOW
- PHASE LINES
- EXISTING FIRE HYDRANT
- EXISTING WATER MAIN
- EXISTING SANITARY SEWER MAIN W/ MANHOLE
- PROPOSED SANITARY SEWER MAIN W/ MANHOLE
- PROPOSED WATER MAIN
- PROPOSED FIRE HYDRANT



SHEET INDEX
N.T.S.

- NOTES:**
- ALL TYPE C CURB & GUTTER IS THE OPTIONAL TYPE C CURB & GUTTER PER EPC STANDARDS
 - ALL PROPOSED STORM ALIGNMENT AND INLET SIZING IS SCHEMATIC. FINAL DESIGN TO BE PROVIDED WITH CD'S AND FINAL DRAINAGE REPORT



STERLING RANCH EAST PRELIMINARY
PLAN NO. 1
PRELIMINARY GRADING & UTILITY PLAN

DESIGNED BY	EAS	SCALE	DATE	04/01/2022
DRAWN BY	ESO	(H) 1" = 60'	SHEET	31 OF 36
CHECKED BY		(V) 1" = N/A	JOB NO.	1183.22

619 N. Cascade Avenue, Suite 200
Colorado Springs, Colorado 80903
(719) 785-0790
(719) 785-0799(Fax)



N:\118322\DRAWINGS\DEVELOPMENT\DP-MES SHEET 31-PP-11.dwg, 3/27/2023, 2:53:00 PM, 1:1