

---

## FOREST LAKES PHASE 2: MAJOR AMENDMENT TO PUD DEVELOPMENT/PRELIMINARY PLAN

### FOREST MANAGEMENT PLAN

DECEMBER 2017

**OWNER:**

Forest Lakes Residential  
Development #2 LLC  
111 Main Street, Suite 1600  
Kansas City, MO 64105

**DEVELOPER:**

Classic Homes  
6385 Corporate Drive  
Colorado Springs, CO 80919

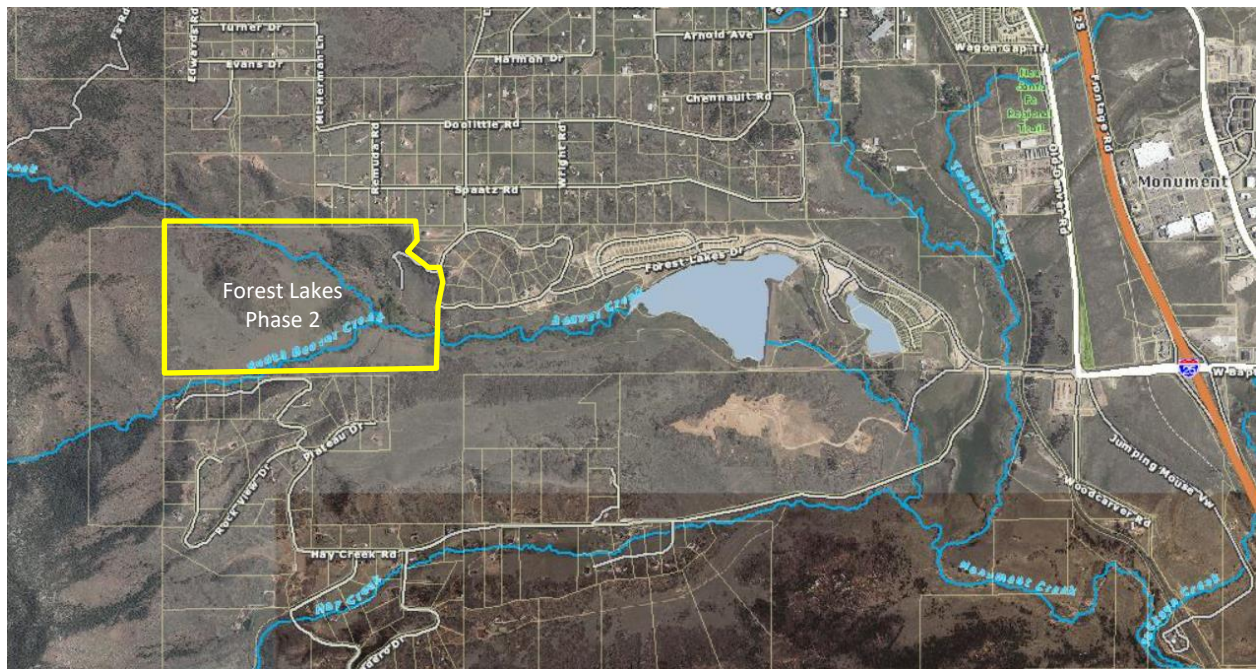
**CONSULTANT:**

N.E.S. Inc.  
619 North Cascade Ave  
Colorado Springs, CO 80903

---

Forest Lakes is a development located northwest of the intersection of Interstate 25 and Baptist Road, to the southwest of the Town of Monument. The property comprises approximately 977 acres in total and Phase 2 represent 287 acres of the western portion of the property. The project proposes 231 single family lots at a gross density is 0.80 units per acre.

There are two existing, man-made lakes in the eastern portion of the property that were constructed as part of the Phase 1 development. Road and utility infrastructure are in place in Phase 1 and the majority of lots in the first phase are platted and constructed. The Waterfront Park along the north side of Bristlecone Lake has also been completed.



## **FOREST MANAGEMENT PLAN**

The project design preserves substantial areas of natural open space tracts with an interconnected trail network. The vegetation on the site is characterized by pinyon-juniper woodlands interspaced with foothill grasslands. The dominant species are mountain mahogany, gamble oak, skunkbush, fringe sage, rabbitbrush, blue grama, and western wheatgrass.

The project will maintain the existing vegetation in the open space areas, subject to the requirements of the Wildfire Hazard Evaluation Report by Stephen J. Spaulding, which recommends the removal of wildfire sources close to proposed building pads, the thinning of dense vegetation and the removal of dead vegetations. The development will also address the requirements for controlling noxious weeds.