

SITE DEVELOPMENT PLANS FOR SLIM CHICKEN'S FALCON MARKETPLACE LOT 9

A PARCEL OF LAND LOCATED IN THE SE QUARTER OF SECTION 1, TOWNSHIP 13
SOUTH, RANGE 65 WEST OF THE SIXTH PRINCIPAL MERIDIAN,
COUNTY OF EL PASO, STATE OF COLORADO



www.CAHEN-ARCH.com
 CAHEN ARCHITECTURAL GROUP P.C.
 Copyright 2019

These plans are an instrument of service and are the property of the Architect. and may not be duplicated, disclosed or reproduced without the written consent of the Architect. Copyrights and arrangements will be enforced and preserved.

SITE DEVELOPMENT PLANS
SLIM CHICKEN'S - FALCON
 FALCON, EL PASO COUNTY, COLORADO
 JOB NO. 21.030

DATE	DESCRIPTION
2021.04.06	ORIGINAL PREPARATION
2021.06.XX	1ST SDP SUBMITTAL



Printed: 6/15/2023 3:37:51 PM
 P:\Slim Chickens\101 - Falcon - CO\History of Site Plan Submittals\working files\101 - A2.1 - EXTERIOR ELEVATIONS.rvt



SITE DEVELOPMENT PLANS FOR SLIM CHICKEN'S FALCON MARKETPLACE LOT 9

A PARCEL OF LAND LOCATED IN THE SE QUARTER OF SECTION 1, TOWNSHIP 13
SOUTH, RANGE 65 WEST OF THE SIXTH PRINCIPAL MERIDIAN,
COUNTY OF EL PASO, STATE OF COLORADO

EXTERIOR FINISH LEGEND (X-X)

KEY	MATERIAL	MANUFACTURER	FINISH/STYLE	SPECIFICATIONS	LOCATION	MATERIAL NOTES
BR-1	BRICK	ACME BRICK (OR APPROVED EQUAL)	OLD FORT SMITH - KING SIZED	RUNNING BOND - ROWLOCK SILL	EXTERIOR WALLS	NATURAL OR WHITE MORTAR COLOR, AS REQUIRED - RE: SPEC FOR COMPLETE INFORMATION
CD-1	COMPOSITE DECKING BOARDS	MOISTURE SHIELD	2" X 6" BOARDS, COLOR - BRIDLE	WOOD COMPOSITE DECKING	PATIO SIGNAGE	1" GAPS BETWEEN BOARDS - FASTENED PER MFR RECOMMENDATIONS
FRP-1	FIBERGLASS REINFORCED PANEL	MARLITE OR APPROVED EQUAL	P100 WHITE	---	BACK OF HOUSE	PROVIDE MANUFACTURERS STANDARD PVC CORNER GUARDS. INSTALL ABOVE BASE.
MT-1	GALVALUME R-PANELS	METAL SALES MANUFACTURING CORP.	CLEAR	26 GAUGE	AWNINGS AND PATIO ROOF	---
MT-2	PRE-FINISHED METAL COPING	FIRESTONE	UNA-CLAD / CLEAR ANODIZED KYNAR 500 FINISH	.05" GAUGE	COPINGS AT DUMPSTER ENCLOSURE	---
MT-3	GALVALUME COPING	METAL SALES MANUFACTURING CORP.	CLEAR	---	---	---
MT-4	PRE-FINISHED METAL COPING	FIRESTONE	UNA-EDGE DE / CLEAR ANODIZED KYNAR 500 FINISH	.05" GAUGE	COPING AT DRIVE-THRU	---
P-1	PAINT	SHERWIN WILLIAMS	A-100 / SATIN	SW 7005 - PURE WHITE	EXTERIOR FIBER CEMENT BOARD TRIM	---
P-2	PRIMER	SHERWIN WILLIAMS	QUICK DRY STAIN BLOCKING PRIMER	---	EXTERIOR FIBER CEMENT BOARD TRIM	---
P-3	PRIMER	SHERWIN WILLIAMS	QUICK DRY STAIN BLOCKING PRIMER	---	EXTERIOR WOOD / FIBER CEMENT LAP SIDING / DUMPSTER ENCLOSURE STEEL POSTS AND CMU	---
P-4	PAINT	SHERWIN WILLIAMS	A-100 / SATIN	SEE FINISH NOTE 2	---	---
P-5	PAINT	SHERWIN WILLIAMS	DTM ACRYLIC / ULTRADEEP / SEMI-GLOSS	SW 6258 - TRICORN BLACK	HM DOORS & FRAMES	---
P-6	PAINT	SHERWIN WILLIAMS	DTM ACRYLIC / SAFETY YELLOW / GLOSS	SW 4084 - SAFETY YELLOW	BOLLARDS	---
P-11	PAINT	SHERWIN WILLIAMS	SEMI-GLOSS	SW 7663 - MONORAIL SILVER	METAL COLUMNS	---

KEY NOTES (X)

FOR SHEETS A2.1 & A2.2

- R-PANEL METAL ROOF (MT-1)
- RIDGE CAP
- CONTINUOUS ALUMINUM SNOW GUARD
- STEEL COLUMN, RE: STRUCT (P-11)
- ROWLOCK BRICK SILL
- BRICK - RUNNING BOND (BR-1)
- NON-ILLUMINATED FROSTED TRANSLUCENT PANEL
- FIBER CEMENT BOARD LAP SIDING (P-4)
- METAL AWNING (MT-1)
- FIBER CEMENT BOARD TRIM, TYP (P-1)
- EXTERIOR LIGHTING FIXTURE, RE: ELECTRICAL
- PREFINISHED METAL COPING (MT-2)
- KNOX BOX
- FIRE DEPARTMENT CONNECTION
- WALL MOUNTED TV'S ABOVE WINDOWS RE: SPECS
- COMPOSITE DECKING BOARD (CD-1)
- 5" HALF ROUND GALVANIZED METAL GUTTER & 4" ROUND DOWNSPOUTS TYP.
- HOLLOW METAL DOOR AND (P-5)
- ELECTRIC PANELS (P-4)
- GAS METER
- ROOF DRAIN OUTLET, RE: ROOF PLAN
- BOLLARDS, RE: CIVIL (P-6)
- FIRE RISER DOOR LABEL

GENERAL NOTES

- SIGNAGE COMPANY TO PERMIT THE LARGEST POSSIBLE SIGNAGE. COORDINATE WITH AHJ.

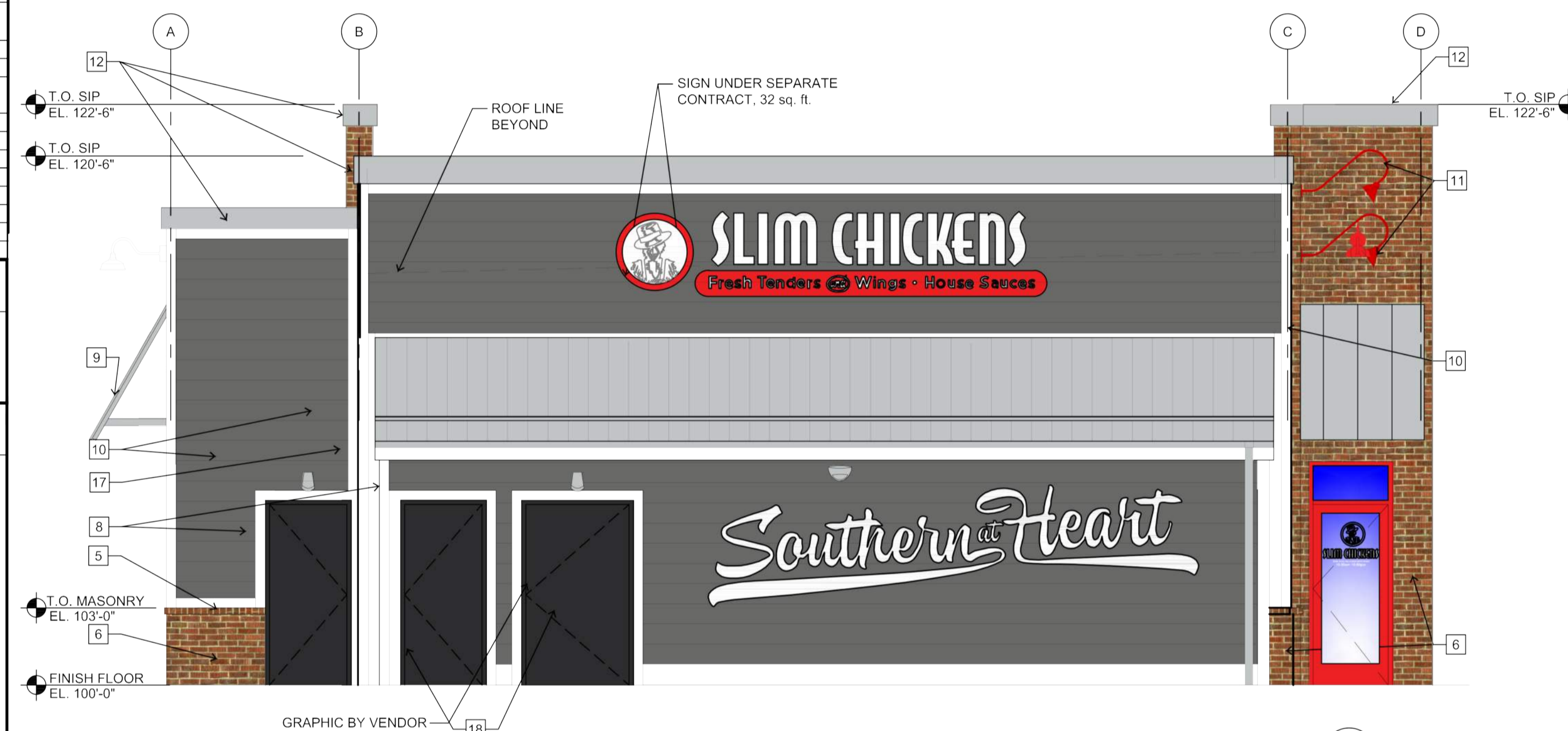
FINISH NOTES

- ALL MATERIAL SUBSTITUTIONS PROPOSED BY GENERAL CONTRACTORS MUST HAVE CORPORATE APPROVAL PRIOR TO SUBMISSION OF PROPOSAL. CONTRACTORS SUBMITTING PROPOSALS WITH MATERIALS OTHER THAN THOSE LISTED ABOVE DO SO AT THEIR OWN RISK.
- ALL CAULK/SEALANT USED IN PROJECT TO EXHIBIT COLOR THAT MATCHES ADJACENT FINISHES.
- CEMENT BOARD SIDING TO HAVE ALL SCREWS COUNTERSUNK AND LOCATED EVERY 12" O.C.

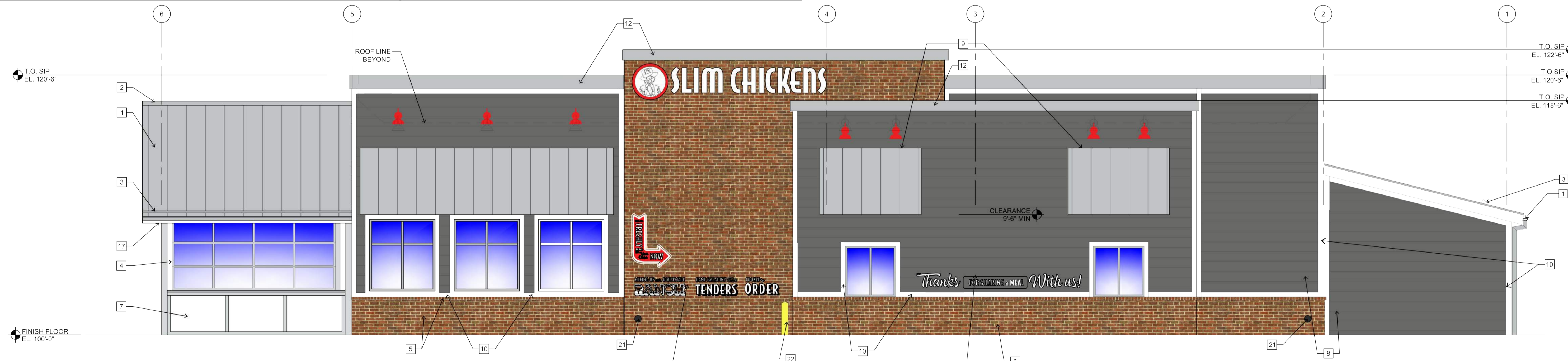
FORMULA FOR ST-1:

1 GALLON FORMULA (TO MATCH HC-168 CHELSEA GRAY)

B1 - 18
N1 - 11
R2 - 1
Y3 - 7
W1 - 2Y



2 EAST ELEVATION
SCALE: 1/4" = 1'-0"



1 SOUTH ELEVATION
SCALE: 1/4" = 1'-0"