

Submitted by Malmstrom White Company

Job Name:

SLIM CHICKENS PROTO - KATIE'S REVISIONS

Catalog Number:

LVL20UG

Type:

G

Notes:

MWV10-11092

DESCRIPTION

The Lumark LVL20UG vaportight area light provides an indoor / outdoor solution in applications where lighting fixture protection is required. The fixture provides equivalent light output up to 100-watt incandescent and 23-watt CFL fixtures with high-quality and long lasting illumination. The fixture is vaportight to protect against dust and moisture. Ideal for garages, storage, and industrial areas.

Specifications

Construction

- Durable die-cast aluminum housing and cage provides protection against vandalism
- Vaportight IP65 rating protects against dust and moisture
- Versatile mounting options - wall, ceiling and post
- Frosted glass lens
- (5) 1/2" NPT conduit openings

Electrical

- Frosted glass lens
- Maintenance-free LEDs with L70 50,000 hours of life
- Universal 120-277V power supply
- Fixture operating temperature range from -20°C to 40°C
- cULus listed for wet locations

Options

- 3500K color temperature
- Fixture produces up to 1450 Lumens

Warranty

- Five-year warranty

Dimensions

Top View

Side View

POWER LUMENS

Delivered Lumens	1,450
CCT (Kelvin)	3,500
CRI (Color Rendering Index)	80
Power Consumption (W)	137

ORDERING INFORMATION

Model	Description
LVL20UG	Die cast Aluminum Vaportight LED

CERTIFICATION DATA

cULus Wet Location Listed Lighting Fixture Approved

TECHNICAL DATA

20°C to 40°C Temperature Rating

SHIPPING DATA

Approximate Net Weight: 4 lbs. (1.81 kg.)

Submitted On: Nov 13, 2019

1/2

Index Page

Lumark

PRV / PRV-XL Prevail LED

Area / Site Luminaire

Product Features

Interactive Menu

- Ordering Information page 2
- Mounting Details page 3
- Optical Configurations page 3
- Product Specifications page 3
- Energy and Performance Data page 4
- Control Options page 5

Quick Facts

- Lumen packages range from 7,100 - 48,600 lumens (50W - 350W)
- Replaces 70W up to 1,000W HID equivalents
- Efficacies up to 148 lumens per watt
- Energy and maintenance savings up to 85% versus HID solutions
- Standard universal quick mount arm with universal drill pattern

Dimensional Details

Prevail

Prevail XL

Lumark

PRV / PRV-XL Prevail

Ordering Information

Product Family	Light Engine	Driver	Voltage	Distribution	Mounting (Included)	Color
PRV-Prevail	C15-(1) LED 7,100 Nominal Lumens C25-(2) LED 13,100 Nominal Lumens C40-(2) LED 26,200 Nominal Lumens C40-(2) LED 30,000 Nominal Lumens	B-Dimming (0-10V)	48V-100V (120-277V) 400-800V *	T2-Type II T2-Type III T2-Type IV T2-Type V	SA-Standard Versatile Arm MA-Mount Arm WM-Wall Mount Arm	AP-Grey AC-Black BK-Black OP-Opal Platinum CM-Chameleon Metallic WH-White
PRV-XL-Prevail XL	C75-(4) LED 26,100 Nominal Lumens C125-(4) LED 52,200 Nominal Lumens C125-(4) LED 60,000 Nominal Lumens C175-(5) LED 85,000 Nominal Lumens					

05 UNDER CANOPY LIGHT 'G'

SCALE: N.T.S.

Sign 30

TMSLIGHTING

ESTABLISHED 1923

1 • Lamping

100IN: 100W INC (A-19)
17LED: 17W LED (supplied)
15LED: 15W LED (CRI 80)
19LED: 19W LED (CRI 80)
26CF: 26W CF (PL-T)
32CF: 32W CF (PL-T)
70MH: 70W MH (E-17)

2 • LED CCT (color temp.)

---: None
30K: 3000K
35K: 3500K
40K: 4000K

3 • Voltage

120: 120V
277: 277V
347: 347V (CF and MH only)

4 • Ballast / Driver

---: None
WM: Wall mount (integral)
N1: Remote, indoor mount (NEMA 1)
N4: Remote, outdoor mount (NEMA 4)

5 • Finish

Specialty
BR: Brushed aluminum
AN: Anodized (semi-specular)
Powder-coated
F05: White
F06: Clay brown
F08: Midnight blue
F09: Pewter
F10: Fire Red
F13: Forest green
F14: Sunshine yellow
F15: Matte black
F16: Gloss black
F18: Flat aluminum
F19: Mirror silver
F21: Architectural bronze
F24: Melted platinum (textured)
F25: Melted gold (textured)
F26: Melted copper
F31: Silver metallic
F32: Bronze metallic
F33: Pyrite bronze
F34: Burnt orange
RAL: RAL custom color (specify)

6 • Dimming

---: None
DIML: LED dimming

7 • Emergency

---: None
EM: Integral LED or CF
EMC: Integral LED or CF with cold pack
EMR: Remote LED or CF
EMCR: Remote LED or CF with cold pack

8 • Globe

---: None
G1: Clear, elongated globe
G3: Prismatic, elongated globe

9 • Accessories

---: None
AK: Aiming knuckle

Note: Some options may not be compatible with others. To ensure compatibility between options, go to tmslighting.com, on the "details" page of this luminaire, and use the configuration tool.

04 SITE LIGHTING 'SL'

SCALE: N.T.S.

PROJECT CONTACTS

OWNER

RICK STUCY
WGR INVESTORS, LLC
425 WILCOX STREET, SUITE 210
CASTLE ROCK, CO 80104
E-MAIL: RICK@TRAILSTARDEV.COM
PH: (303) 660-0801

ARCHITECT

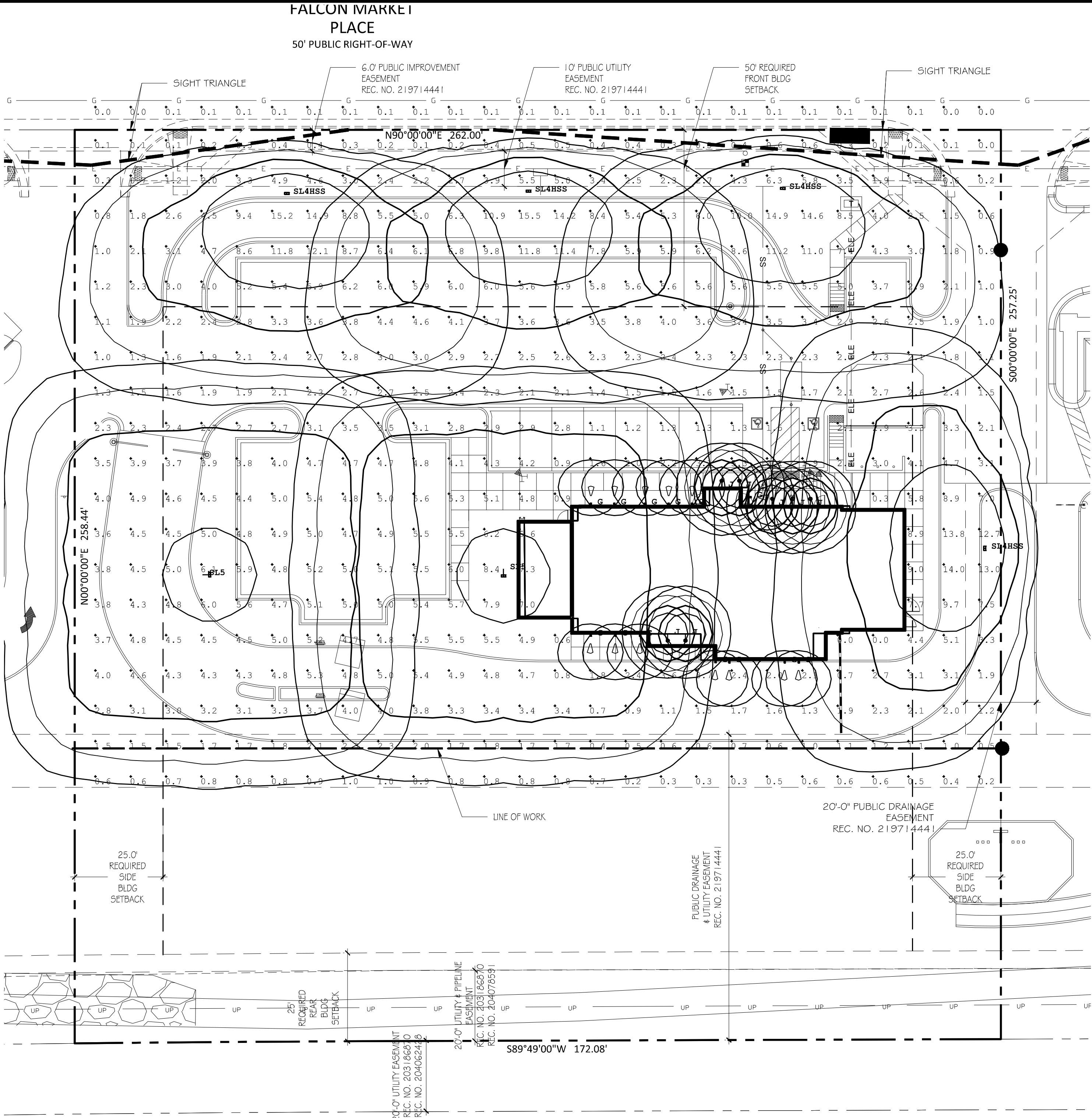
CAHEN ARCHITECTURAL GROUP, P.C.
7000 E BELLEVUE AVE, SUITE 355
GREENWOOD VILLAGE, CO 80111
PH: (303) 743-0002
E-MAIL: BHUGHES@CAHEN-ARCH.COM
CONTACT: Ben Hughes, NCARB, LEED AP

PHOTOMETRIC

CHRIS JENNINGS
MALMSTROM WHITE CO.
PH: (501) 993-8779
E-MAIL: CHRIS@MW-CO.COM
CONTACT: Chris Jennings.
PRINCIPAL / OUTSIDE SALES

Luminaire Schedule						
Symbol	Qty	Label	Mounting Height	Color	Arrangement	Description
	5	SL5	27'-0"	BRONZE	SINGLE	PRV-XL-C125-D-UNV-T5-B2-SA (10KV, 7 PIN)
	7	J	8'-0"/17'-0"	RED	SINGLE	SIGN 1 FLOODLIGHT 10 IN DIA ASYMMETRICAL ALUMINUM REFLECTOR WHITE POLYESTER PO
	13	G	10'-0"	CLEAR	SINGLE	LVL20UG
	4	SL4HSS	27'-0"	Bronze	SINGLE	PRV-XL-C125-D-UNV-T4-B2-SA (10KV, 7 PIN)

Calculation Summary						
Label	CalcType	Units	Avg	Max	Min	Avg/Min
CalcPts_1	Illuminance	Fc	3.57	15.5	0.0	N.A.
CalcPts_2	Illuminance	Fc	0.08	0.1	0.0	N.A.



01 PHOTOMETRIC PLAN
SCALE: 1"=20'-0"



0' 5' 10' 20' 40'
SCALE: 1" = 20'-0"

SHEET NOTES

ILLUMINATION WITHIN THE SITE MUST COMPLY WITH THE 2018 INTERNATIONAL BUILDING CODE REQUIREMENT FROM SECTION 1006 - MEANS OF EGRESS ILLUMINATION. SECTION 1006. ILLUMINATION REQUIRED: THE MEANS OF EGRESS, INCLUDING THE EXIT DISCHARGE, SHALL BE ILLUMINATED AT ALL TIMES THE BUILDING IS OCCUPIED. SECTION 1006.2 ILLUMINATION LEVEL. THE MEANS OF EGRESS ILLUMINATION LEVEL SHALL NOT BE LESS THAN 1 FOOT-CANDLE (11 LUX) AT THE FLOOR LEVEL, AND CONTINUING TO THE "PUBLIC WAY".

REALIZE YOUR VISION

CAHEN ARCHITECTURAL GROUP P.C.

7000 E Bellevue Ave, Suite 355
Greenwood Village, CO 80111

Life Changing Chicken

SLIM CHICKENS

Chicken tenders - Buffalo Wings - Sandwiches - Salads - More

7535 FALCON MARKET PLACE

FALCON, CO 80831

STIPULATION FOR REUSE

THIS DRAWING WAS PREPARED FOR USE ON A SPECIFIC SITE AT FALCON, CO. CONTENTS ARE NOT TO BE REPRODUCED OR TRANSMITTED IN ANY FORM OR BY ANY MEANS, ELECTRONIC OR MECHANICAL, INCLUDING PHOTOCOPYING, RECORDING, OR BY ANY INFORMATION STORAGE AND RETRIEVAL SYSTEM, WITHOUT THE WRITTEN PERMISSION OF THE ARCHITECT. ANY REUSE OF THIS DRAWING FOR ANY OTHER PROJECT IS NOT AUTHORIZED AND MAY BE CONSIDERED A VIOLATION OF THE ARCHITECT'S PROFESSIONAL ETHICS AND THE LAW.

ISSUES / REVISIONS

NO.	DATE	DESCRIPTION
1	10/14/2021	PERMIT

ISSUE DATE: 03/19/2019

PROTO DATE: 11/01/18

PROTO SIZE: 2800/L

CHECKED BY: BHH

DRAWN BY: TS

PROJECT #: 31101

SHEET NAME

PHOTOMETRIC PLAN

SHEET NUMBER

A0.4

10-14-2021 PERMIT SUBMITTAL