

GRADING AND EROSION CONTROL DOCUMENTS FOR HONOR CHARTER SCHOOL

THE NORTHEAST QUARTER OF SECTION 1, TOWNSHIP 13 SOUTH, RANGE 65 WEST, SIXTH PRINCIPAL MERIDIAN
COUNTY OF EL PASO, STATE OF COLORADO

EPC STORMWATER REVIEW COMMENTS
IN ORANGE BOXES WITH BLACK TEXT

LEGAL DESCRIPTION

A PARCEL OF LAND BEING A PORTION OF THE SOUTH ONE-HALF OF THE NORTHEAST ONE-QUARTER (S 1/2 NE 1/4) OF SECTION 1, TOWNSHIP 13 SOUTH, RANGE 65 WEST OF THE 6TH P.M., SITUATE IN EL PASO COUNTY, COLORADO, DESCRIBED AS FOLLOWS:

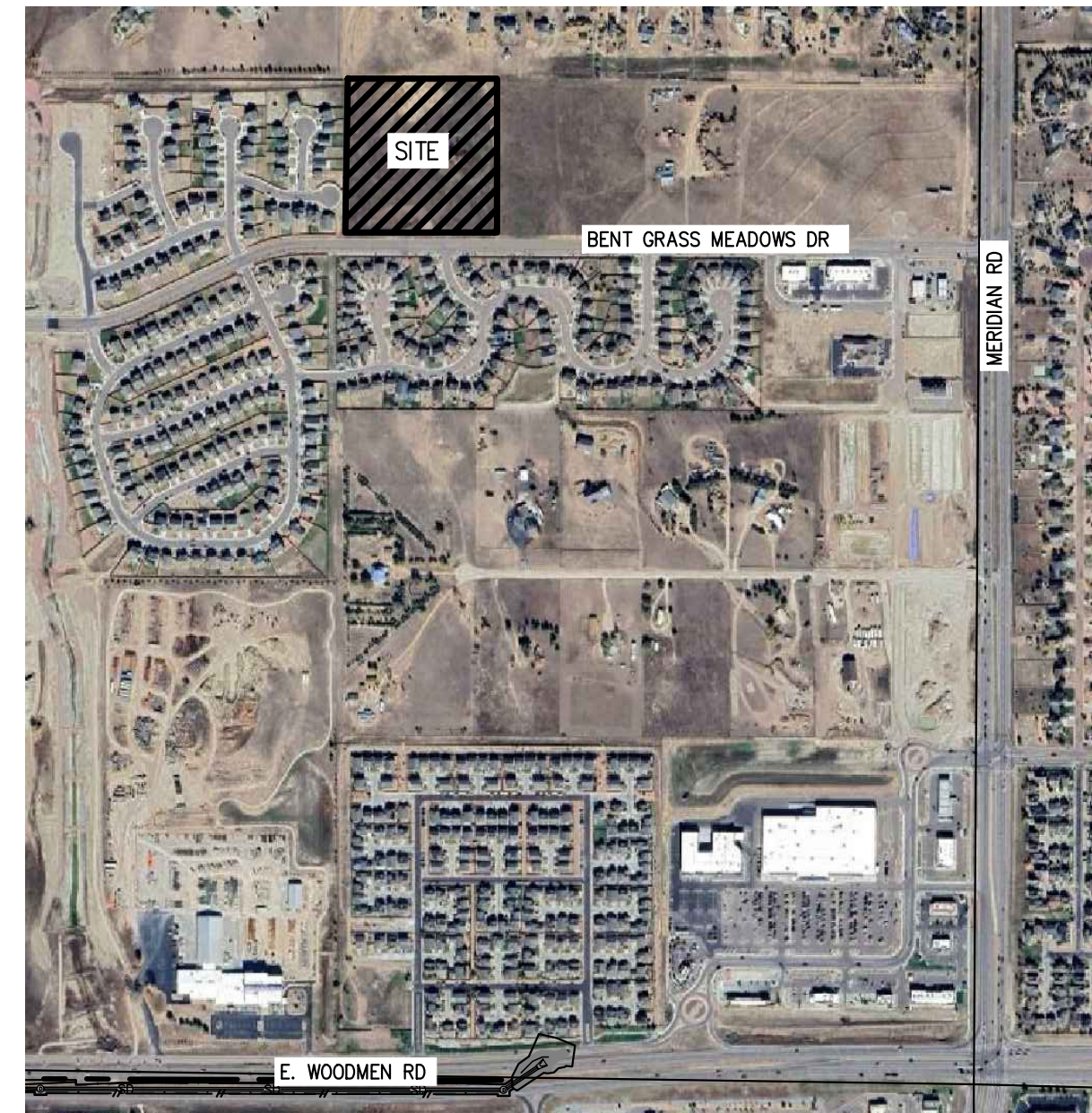
COMMENCING AT THE NORTHEAST CORNER OF SAID SECTION 1 S 1/2 NE 1/4 (ALL BEARINGS IN THIS DESCRIPTION ARE RELATIVE TO THE EAST LINE OF SAID S 1/2 NE 1/4, WHICH BEARS S 00 DEGREES 00 MINUTES 06 SECONDS W ASSUMED); THENCE S 00 DEGREES 00 MINUTES 06 SECONDS W ALONG SAID S 1/2 NE 1/4'S EAST LINE, 821.14 FEET TO A POINT ON THE NORTH LINE OF THE SOUTH FORTY (40) FEET OF THE NORTH ONE-HALF OF SAID S 1/2 NE 1/4; THENCE N 89 DEGREES 52 MINUTES 03 SECONDS W ALONG SAID NORTH LINE, 1979.60 FEET TO THE POINT OF BEGINNING OF THE PARCEL HEREIN DESCRIBED; THENCE CONTINUE N 89 DEGREES 52 MINUTES 03 SECONDS W ALONG SAID NORTH LINE, 660.97 FEET TO A POINT ON THE WEST LINE OF SAID S 1/2 NE 1/4; THENCE N 00 DEGREES 08 MINUTES 14 SECONDS E ALONG SAID S 1/2 NE 1/4'S WEST LINE, 619.52 FEET TO THE NORTHWEST CORNER OF SAID S 1/2 NE 1/4; THENCE S 89 DEGREES 54 MINUTES 10 SECONDS E ALONG THE NORTH LINE OF SAID S 1/2 NE 1/4, 659.50 FEET; THENCE S 00 DEGREES 00 MINUTES 06 SECONDS W, 619.92 FEET TO THE POINT OF BEGINNING.

(PER TITLE COMMITMENT NCS001536-ES, WITH AN EFFECTIVE DATE OF JULY 16, 2025 AS PROVIDED BY FIDELITY NATIONAL TITLE INSURANCE COMPANY.)

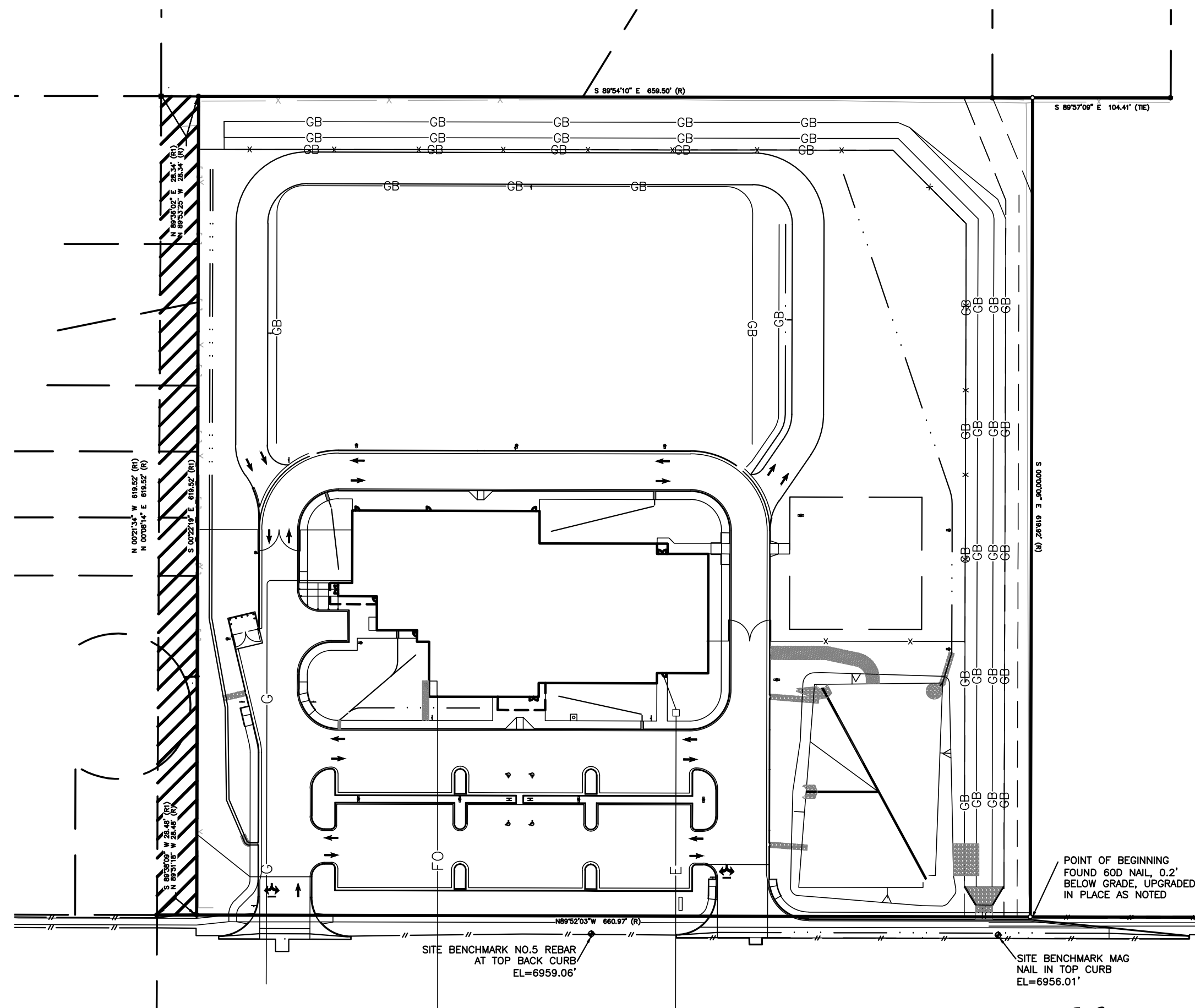
SHEET INDEX

- G-1 GEC COVER SHEET
- G-2 GEC GENERAL NOTES
- G-3 INITIAL EROSION CONTROL PLAN NORTH
- G-4 INITIAL EROSION CONTROL PLAN SOUTH
- G-5 INTERIM EROSION CONTROL PLAN NORTH
- G-6 INTERIM EROSION CONTROL PLAN SOUTH
- G-7 FINAL EROSION CONTROL PLAN NORTH
- G-8 FINAL EROSION CONTROL PLAN SOUTH
- G-9 ECP DETAILS 1
- G-10 ECP DETAILS 2
- G-11 ECP DETAILS 3
- G-12 ECP DETAILS 4

Include the off-site GEC sheets in the CDs in this set



VICINITY MAP
(NOT TO SCALE)



CONTACT LIST

OWNER - DEVELOPER
HIGHMARK SCHOOL DEVELOPMENT
10808 S. RIVER FRONT PKWY SUITE 3126B
SOUTH JORDAN, UTAH 84095
ATTN: TAMMY SWEERIS
(616) 240-3566

CIVIL ENGINEER
TAIT & ASSOCIATES, INC.
320 N LINCOLN AVE
LOVELAND, CO 80537
ATTN: BRIAN CAMPBELL, PE
(970) 613-1447

SURVEYOR
TAIT & ASSOCIATES, INC.
320 N LINCOLN AVE
LOVELAND, CO 80537
ATTN: KAT STAMP
(970) 612-5457

GEOTECHNICAL ENGINEER
VIVID ENGINEERING GROUP, INC.
1053 ELKTON DRIVE
COLORADO SPRINGS, CO 80907
ATTN: NATHAN A. DOWDEN
(719) 896-4356

LANDSCAPE ARCHITECT
EVERGREEN DESIGN SERVICES
1340 ENVIRON WAY CHAPEL HILL,
NC 27517-4430
ATTN: KENN BATES PLA, FASLA
(970) 461-5799

MUNICIPALITY
EL PASO COUNTY PLANNING DEPARTMENT
2880 INTERNATIONAL CIRCLE, SUITE 110,
COLORADO SPRINGS, CO 80910
ATT: JEN UHLER
(719) 520-6300

CONTRACTOR
WALTZ CONSTRUCTION
449 S. 48TH STREET SUITE 105
TEMPE, AZ 85281
ATTN: MALCOLM MULRONEY
(480) 759-9622

Use signature blocks for stand-alone GEC plans.

Engineer's Statement:
This Grading and Erosion Control Plan was prepared under my direction and supervision and is correct to the best of my knowledge and belief. Said Plan has been prepared according to the criteria established by the County for Grading and Erosion Control Plans. I accept responsibility for any liability caused by any negligent acts, errors or omissions on my part in preparing this plan.

Owner's Statement:
I, the owner/developer, have read and will comply with the requirements of the Grading and Erosion Control Plan.

WATER
WOODMEN HILLS METRO DISTRICT
8046 EASTONVILLE ROAD
FALCON, CO 80831
719-495-2500

GAS
COLORADO SPRINGS UTILITES (CSU)
7710 DURANT DRIVE, P.O. BOX 1103,
MAIL CODE 2150
COLORADO SPRINGS, CO 80947-2150
719-668-5573

SEWER
WOODMEN HILLS METRO DISTRICT
8046 EASTONVILLE ROAD
FALCON, CO 80831
719-495-2500

POWER
MOUNTAIN VIEW ELECTRIC
11140 E WOODMEN RD
FALCON, CO 80831
719-495-2283

STORM DRAIN
EL PASO COUNTY DEVELOPMENT DEPARTMENT
2880 INTERNATIONAL CIRCLE, SUITE 110,
COLORADO SPRINGS, CO 80910
719-520-6300

ENGINEER'S STATEMENT:
THESE DETAILED PLANS AND SPECIFICATIONS WERE PREPARED UNDER MY DIRECTION AND SUPERVISION. SAID PLANS AND SPECIFICATIONS HAVE BEEN PREPARED ACCORDING TO THE CRITERIA ESTABLISHED BY THE COUNTY FOR DETAILED ROADWAY, DRAINAGE, GRADING AND EROSION CONTROL PLANS AND SPECIFICATIONS, AND SAID PLANS AND SPECIFICATIONS ARE IN CONFORMITY WITH APPLICABLE MASTER DRAINAGE PLANS AND MASTER TRANSPORTATION PLANS. SAID PLANS AND SPECIFICATIONS MEET THE PURPOSES FOR WHICH THE PARTICULAR ROADWAY AND DRAINAGE FACILITIES ARE DESIGNED AND ARE CORRECT TO THE BEST OF MY KNOWLEDGE AND BELIEF. I ACCEPT RESPONSIBILITY FOR ANY LIABILITY CAUSED BY ANY NEGLIGENT ACTS, ERRORS OR OMISSIONS ON MY PART IN PREPARATION OF THESE DETAILED PLANS AND SPECIFICATIONS.

ENGINEER OF RECORD SIGNATURE _____ DATE _____

OWNER'S STATEMENT:
I, THE OWNER/DEVELOPER HAVE READ AND WILL COMPLY WITH THE REQUIREMENTS OF THE GRADING AND EROSION CONTROL PLAN AND ALL OF THE REQUIREMENTS SPECIFIED IN THESE DETAILED PLANS AND SPECIFICATIONS.

OWNER SIGNATURE _____ DATE _____

EL PASO COUNTY:
COUNTY PLAN REVIEW IS PROVIDED ONLY FOR GENERAL CONFORMANCE WITH COUNTY DESIGN CRITERIA. THE COUNTY IS NOT RESPONSIBLE FOR THE ACCURACY AND ADEQUACY OF THE DESIGN, DIMENSIONS, AND/OR ELEVATIONS WHICH SHALL BE CONFIRMED AT THE JOB SITE. THE COUNTY THROUGH THE APPROVAL OF THIS DOCUMENT ASSUMES NO RESPONSIBILITY FOR COMPLETENESS AND/OR ACCURACY OF THIS DOCUMENT.
FILED IN ACCORDANCE WITH THE REQUIREMENTS OF THE EL PASO COUNTY LAND DEVELOPMENT CODE, DRAINAGE CRITERIA MANUAL VOLUMES 1 AND 2, AND ENGINEERING CRITERIA MANUAL, AS AMENDED.
IN ACCORDANCE WITH EGM SECTION 1.12, THESE CONSTRUCTION DOCUMENTS WILL BE VALID FOR CONSTRUCTION FOR A PERIOD OF 2 YEARS FROM THE DATE SIGNED BY THE EL PASO COUNTY ENGINEER. IF CONSTRUCTION HAS NOT STARTED WITHIN THOSE 2 YEARS, THE PLANS WILL NEED TO BE RESUBMITTED FOR APPROVAL, INCLUDING PAYMENT OF REVIEW FEES AT THE PLANNING AND COMMUNITY DEVELOPMENT DIRECTOR'S DISCRETION.

COUNTY PROJECT ENGINEER SIGNATURE _____ DATE _____

Joshua J. Palmer, P.E.
County Engineer/ECM Administrator

FOR REVIEW ONLY
NOT FOR CONSTRUCTION

PREPARED UNDER THE SUPERVISION OF
TAIT & ASSOCIATES, INC.

DRAWING CW
DATE: 11/11/2024
CHECKED:
DATE:
REVISION #:
DATE:
JOB NO. CO1517

G-1
OF
48

BRIAN CAMPBELL
COLORADO P.E. #40196

NO.	DESCRIPTION	BY	DATE

320 North Lincoln Avenue
Loveland, CO 80537
p: 970.613.1447
www.tait.com
ENGINEERING ENVIRONMENTAL BUILDING LAND
DRAINAGE WATER
SOLUTIONS
Since 1964

TAIT
& ASSOCIATES

GEC COVER SHEET
HONOR CHARTER SCHOOL
HIGHMARK SCHOOL DEVELOPMENT
8250 BENT GRASS MEADOWS DR.

THE FOLLOWING STANDARD EL PASO COUNTY GRADING AND EROSION CONTROL PLAN NOTES SHALL BE INCLUDED, AS APPLICABLE:

STORMWATER DISCHARGES FROM CONSTRUCTION SITES SHALL NOT CAUSE OR THREATEN TO CAUSE POLLUTION, CONTAMINATION, OR DEGRADATION OF STATE WATERS. ALL WORK AND EARTH DISTURBANCE SHALL BE DONE IN A MANNER THAT MINIMIZES POLLUTION OF ANY ON-SITE OR OFF-SITE WATERS, INCLUDING WETLANDS.

NOTWITHSTANDING ANYTHING DEPICTED IN THESE PLANS IN WORDS OR GRAPHIC REPRESENTATION, ALL DESIGN AND CONSTRUCTION RELATED TO ROADS, STORM DRAINAGE AND EROSION CONTROL SHALL CONFORM TO THE STANDARDS AND REQUIREMENTS OF THE MOST RECENT VERSION OF THE RELEVANT ADOPTED EL PASO COUNTY STANDARDS, INCLUDING THE LAND DEVELOPMENT CODE, THE ENGINEERING CRITERIA MANUAL, THE DRAINAGE CRITERIA MANUAL, AND THE DRAINAGE CRITERIA MANUAL VOLUME 2. ANY DEVIATIONS FROM REGULATIONS AND STANDARDS MUST BE REQUESTED, AND APPROVED, IN WRITING.

A SEPARATE STORMWATER MANAGEMENT PLAN (SWMP) FOR THIS PROJECT SHALL BE COMPLETED AND AN EROSION AND STORMWATER QUALITY CONTROL PERMIT (ESQCP) ISSUED PRIOR TO COMMENCING CONSTRUCTION. MANAGEMENT OF THE SWMP DURING CONSTRUCTION IS THE RESPONSIBILITY OF THE DESIGNATED QUALIFIED STORMWATER MANAGER OR CERTIFIED EROSION CONTROL INSPECTOR. THE SWMP SHALL BE LOCATED ON SITE AT ALL TIMES DURING CONSTRUCTION AND SHALL BE KEPT UP TO DATE WITH WORK PROGRESS AND CHANGES IN THE FIELD.

ONCE THE ESQCP IS APPROVED AND A 'NOTICE TO PROCEED' HAS BEEN ISSUED, THE CONTRACTOR MAY INSTALL THE INITIAL STAGE EROSION AND SEDIMENT CONTROL MEASURES AS INDICATED ON THE APPROVED GEC. A PRECONSTRUCTION MEETING BETWEEN THE CONTRACTOR, ENGINEER, AND EL PASO COUNTY WILL BE HELD PRIOR TO ANY CONSTRUCTION. IT IS THE RESPONSIBILITY OF THE APPLICANT TO COORDINATE THE MEETING TIME AND PLACE WITH COUNTY STAFF.

CONTROL MEASURES MUST BE INSTALLED PRIOR TO COMMENCEMENT OF ACTIVITIES THAT COULD CONTRIBUTE POLLUTANTS TO STORMWATER. CONTROL MEASURES FOR ALL SLOPES, CHANNELS, DITCHES, AND DISTURBED LAND AREAS SHALL BE INSTALLED IMMEDIATELY UPON COMPLETION OF THE DISTURBANCE.

ALL TEMPORARY SEDIMENT AND EROSION CONTROL MEASURES SHALL BE MAINTAINED AND REMAIN IN EFFECTIVE OPERATING CONDITION UNTIL PERMANENT SOIL EROSION CONTROL MEASURES ARE IMPLEMENTED AND FINAL STABILIZATION IS ESTABLISHED. ALL PERSONS ENGAGED IN LAND DISTURBANCE ACTIVITIES SHALL ASSESS THE ADEQUACY OF CONTROL MEASURES AT THE SITE AND IDENTIFY IF CHANGES TO THOSE CONTROL MEASURES ARE NEEDED TO ENSURE THE CONTINUED EFFECTIVE PERFORMANCE OF THE CONTROL MEASURES. ALL CHANGES TO TEMPORARY SEDIMENT AND EROSION CONTROL MEASURES MUST BE INCORPORATED INTO THE STORMWATER MANAGEMENT PLAN.

TEMPORARY STABILIZATION SHALL BE IMPLEMENTED ON DISTURBED AREAS AND STOCKPILES WHERE GROUND DISTURBING CONSTRUCTION ACTIVITY HAS PERMANENTLY CEASED OR TEMPORARILY CEASED FOR LONGER THAN 14 DAYS. FINAL STABILIZATION MUST BE IMPLEMENTED AT ALL APPLICABLE CONSTRUCTION SITES. FINAL STABILIZATION IS ACHIEVED WHEN ALL GROUND DISTURBING ACTIVITIES ARE COMPLETE AND ALL DISTURBED AREAS EITHER HAVE A UNIFORM VEGETATIVE COVER WITH INDIVIDUAL PLANT DENSITY OF 70 PERCENT OF PRE-DISTURBANCE LEVELS ESTABLISHED OR EQUIVALENT PERMANENT ALTERNATIVE STABILIZATION METHOD IS IMPLEMENTED. ALL TEMPORARY SEDIMENT AND EROSION CONTROL MEASURES SHALL BE REMOVED UPON FINAL STABILIZATION AND BEFORE PERMIT CLOSURE.

ALL PERMANENT STORMWATER MANAGEMENT FACILITIES SHALL BE INSTALLED AS DESIGNED IN THE APPROVED PLANS. ANY PROPOSED CHANGES THAT EFFECT THE DESIGN OR FUNCTION OF PERMANENT STORMWATER MANAGEMENT STRUCTURES MUST BE APPROVED BY THE ECM ADMINISTRATOR PRIOR TO IMPLEMENTATION.

EARTH DISTURBANCES SHALL BE CONDUCTED IN SUCH A MANNER SO AS TO EFFECTIVELY MINIMIZE ACCELERATED SOIL EROSION AND RESULTING SEDIMENTATION. ALL DISTURBANCES SHALL BE DESIGNED, CONSTRUCTED, AND COMPLETED SO THAT THE EXPOSED AREA OF ANY DISTURBED LAND SHALL BE LIMITED TO THE SHORTEST PRACTICAL PERIOD OF TIME. PRE-EXISTING VEGETATION SHALL BE PROTECTED AND MAINTAINED WITHIN 50 HORIZONTAL FEET OF A WATERS OF THE STATE UNLESS SHOWN TO BE INFEASIBLE AND SPECIFICALLY REQUESTED AND APPROVED.

COMPACTION OF SOIL MUST BE PREVENTED IN AREAS DESIGNATED FOR INFILTRATION CONTROL MEASURES OR WHERE FINAL STABILIZATION WILL BE ACHIEVED BY VEGETATIVE COVER. AREAS DESIGNATED FOR INFILTRATION CONTROL MEASURES SHALL ALSO BE PROTECTED FROM SEDIMENTATION DURING CONSTRUCTION UNTIL FINAL STABILIZATION IS ACHIEVED. IF COMPACTION PREVENTION IS NOT FEASIBLE DUE TO SITE CONSTRAINTS, ALL AREAS DESIGNATED FOR INFILTRATION AND VEGETATION CONTROL MEASURES MUST BE LOOSENED PRIOR TO INSTALLATION OF THE CONTROL MEASURE(S).

ANY TEMPORARY OR PERMANENT FACILITY DESIGNED AND CONSTRUCTED FOR THE CONVEYANCE OF STORMWATER AROUND, THROUGH, OR FROM THE EARTH DISTURBANCE AREA SHALL BE A STABILIZED CONVEYANCE DESIGNED TO MINIMIZE EROSION AND THE DISCHARGE OF SEDIMENT OFF SITE.

CONCRETE WASH WATER SHALL BE CONTAINED AND DISPOSED OF IN ACCORDANCE WITH THE SWMP. NO WASH WATER SHALL BE DISCHARGED TO OR ALLOWED TO ENTER STATE WATERS, INCLUDING ANY SURFACE OR SUBSURFACE STORM DRAINAGE SYSTEM OR FACILITIES. CONCRETE WASHOUTS SHALL NOT BE LOCATED IN AN AREA WHERE SHALLOW GROUNDWATER MAY BE PRESENT, OR WITHIN 50 FEET OF A SURFACE WATER BODY, CREEK OR STREAM.

DURING DEWATERING OPERATIONS OF UNCONTAMINATED GROUND WATER MAY BE DISCHARGED ON SITE, BUT SHALL NOT LEAVE THE SITE IN THE FORM OF SURFACE RUNOFF UNLESS AN APPROVED STATE DEWATERING PERMIT IS IN PLACE.

EROSION CONTROL BLANKETING OR OTHER PROTECTIVE COVERING SHALL BE USED ON SLOPES STEEPER THAN 3:1.

CONTRACTOR SHALL BE RESPONSIBLE FOR THE REMOVAL OF ALL WASTES FROM THE CONSTRUCTION SITE FOR DISPOSAL IN ACCORDANCE WITH LOCAL AND STATE REGULATORY REQUIREMENTS. NO CONSTRUCTION DEBRIS, TREE SLASH, BUILDING MATERIAL WASTES OR UNUSED BUILDING MATERIALS SHALL BE BURIED, DUMPED, OR DISCHARGED AT THE SITE.

WASTE MATERIALS SHALL NOT BE TEMPORARILY PLACED OR STORED IN THE STREET, ALLEY, OR OTHER PUBLIC WAY, UNLESS IN ACCORDANCE WITH AN APPROVED TRAFFIC CONTROL PLAN. CONTROL MEASURES MAY BE REQUIRED BY EL PASO COUNTY ENGINEERING IF DEEMED NECESSARY, BASED ON SPECIFIC CONDITIONS AND CIRCUMSTANCES.

TRACKING OF SOILS AND CONSTRUCTION DEBRIS OFF-SITE SHALL BE MINIMIZED. MATERIALS TRACKED OFF-SITE SHALL BE CLEANED UP AND PROPERLY DISPOSED OF IMMEDIATELY.

THE OWNER/DEVELOPER SHALL BE RESPONSIBLE FOR THE REMOVAL OF ALL CONSTRUCTION DEBRIS, DIRT, TRASH, ROCK, SEDIMENT, SOIL, AND SAND THAT MAY ACCUMULATE IN ROADS, STORM DRAINS AND OTHER DRAINAGE CONVEYANCE SYSTEMS AND STORMWATER APPURTENANCES AS A RESULT OF SITE DEVELOPMENT.

THE QUANTITY OF MATERIALS STORED ON THE PROJECT SITE SHALL BE LIMITED, AS MUCH AS PRACTICAL, TO THAT QUANTITY REQUIRED TO PERFORM THE WORK IN AN ORDERLY SEQUENCE. ALL MATERIALS STORED ON-SITE SHALL BE STORED IN A NEAT, ORDERLY MANNER, IN THEIR ORIGINAL CONTAINERS, WITH ORIGINAL MANUFACTURER'S LABELS.

NO CHEMICAL(S) HAVING THE POTENTIAL TO BE RELEASED IN STORMWATER ARE TO BE STORED OR USED ONSITE UNLESS PERMISSION FOR THE USE OF SUCH CHEMICAL(S) IS GRANTED IN WRITING BY THE ECM ADMINISTRATOR. IN GRANTING APPROVAL FOR THE USE OF SUCH CHEMICAL(S), SPECIAL CONDITIONS AND MONITORING MAY BE REQUIRED.

BULK STORAGE OF ALLOWED PETROLEUM PRODUCTS OR OTHER ALLOWED LIQUID CHEMICALS IN EXCESS OF 55 GALLONS SHALL REQUIRE ADEQUATE SECONDARY CONTAINMENT PROTECTION TO CONTAIN ALL SPILLS ONSITE AND TO PREVENT ANY SPILLED MATERIALS FROM ENTERING STATE WATERS, ANY SURFACE OR SUBSURFACE STORM DRAINAGE SYSTEM OR OTHER FACILITIES.

NO PERSON SHALL CAUSE THE IMPEDIMENT OF STORMWATER FLOW IN THE CURB AND GUTTER OR DITCH EXCEPT WITH APPROVED SEDIMENT CONTROL MEASURES.

OWNER/DEVELOPER AND THEIR AGENTS SHALL COMPLY WITH THE 'COLORADO WATER QUALITY CONTROL ACT' (TITLE 25, ARTICLE 8, CRS), AND THE 'CLEAN WATER ACT' (33 USC 1344), IN ADDITION TO THE REQUIREMENTS OF THE LAND DEVELOPMENT CODE, DCM VOLUME II AND THE ECM APPENDIX I. ALL APPROPRIATE PERMITS MUST BE OBTAINED BY THE CONTRACTOR PRIOR TO CONSTRUCTION (0041, NPDES, FLOODPLAIN, 404, FUGITIVE DUST, ETC.). IN THE EVENT OF CONFLICTS BETWEEN THESE REQUIREMENTS AND OTHER LAWS, RULES, OR REGULATIONS OF OTHER FEDERAL, STATE, LOCAL, OR COUNTY AGENCIES, THE MOST RESTRICTIVE LAWS, RULES, OR REGULATIONS SHALL APPLY.

ALL CONSTRUCTION TRAFFIC MUST ENTER/EXIT THE SITE ONLY AT APPROVED CONSTRUCTION ACCESS POINTS. PRIOR TO CONSTRUCTION THE PERMITTEE SHALL VERIFY THE LOCATION OF EXISTING UTILITIES.

A WATER SOURCE SHALL BE AVAILABLE ON SITE DURING EARTHWORK OPERATIONS AND SHALL BE UTILIZED AS REQUIRED TO MINIMIZE DUST FROM EARTHWORK EQUIPMENT AND WIND.

THE SOILS REPORT FOR THIS SITE HAS BEEN PREPARED BY _____ AND SHALL BE CONSIDERED A PART OF THESE PLANS.

AT LEAST TEN (10) DAYS PRIOR TO THE ANTICIPATED START OF CONSTRUCTION, FOR PROJECTS THAT WILL DISTURB ONE (1) ACRE OR MORE, THE OWNER OR OPERATOR OF CONSTRUCTION ACTIVITY SHALL SUBMIT A PERMIT APPLICATION FOR STORMWATER DISCHARGE TO THE COLORADO DEPARTMENT OF PUBLIC HEALTH AND ENVIRONMENT, WATER QUALITY DIVISION. THE APPLICATION CONTAINS CERTIFICATION OF COMPLETION OF A STORMWATER MANAGEMENT PLAN (SWMP), OF WHICH THIS GRADING AND EROSION CONTROL PLAN MAY BE A part. FOR INFORMATION OR APPLICATION MATERIALS CONTACT: COLORADO DEPARTMENT OF PUBLIC HEALTH AND ENVIRONMENT WATER QUALITY CONTROL DIVISION WQCD - PERMITS 4300 CHERRY CREEK DRIVE SOUTH DENVER, CO 80246-1530 ATTN: PERMITS UNIT

Use current notes for EPC grading and erosion control plans (attached or found in GEC Checklist)



STANDARD NOTES FOR EL PASO COUNTY CONSTRUCTION PLANS

- ALL DRAINAGE AND ROADWAY CONSTRUCTION SHALL MEET THE STANDARDS AND SPECIFICATIONS OF THE CITY OF COLORADO SPRINGS/EL PASO COUNTY DRAINAGE CRITERIA MANUAL, VOLUMES 1 AND 2, AND THE EL PASO COUNTY ENGINEERING CRITERIA MANUAL.
- CONTRACTOR SHALL BE RESPONSIBLE FOR THE NOTIFICATION AND FIELD NOTIFICATION OF ALL EXISTING UTILITIES, WHETHER SHOWN ON THE PLANS OR NOT, BEFORE BEGINNING CONSTRUCTION. LOCATION OF EXISTING UTILITIES SHALL BE VERIFIED BY THE CONTRACTOR PRIOR TO CONSTRUCTION. CALL 811 TO CONTACT THE UTILITY NOTIFICATION CENTER OF COLORADO (UNCC).
- CONTRACTOR SHALL KEEP A COPY OF THESE APPROVED PLANS, THE GRADING AND EROSION CONTROL PLAN, THE STORMWATER MANAGEMENT PLAN (SWMP), THE SOILS AND GEOTECHNICAL REPORT, AND THE APPROPRIATE DESIGN AND CONSTRUCTION STANDARDS AND SPECIFICATIONS AT THE JOB SITE AT ALL TIMES, INCLUDING THE FOLLOWING:
 - EL PASO COUNTY ENGINEERING CRITERIA MANUAL (ECM)
 - CITY OF COLORADO SPRINGS/EL PASO COUNTY DRAINAGE CRITERIA MANUAL, VOLUMES 1 AND 2
 - COLORADO DEPARTMENT OF TRANSPORTATION (CDOT) STANDARD SPECIFICATIONS FOR ROAD AND BRIDGE CONSTRUCTION
 - CDOT M & S STANDARDS
- NOTWITHSTANDING ANYTHING DEPICTED IN THESE PLANS IN WORDS OR GRAPHIC REPRESENTATION, ALL DESIGN AND CONSTRUCTION RELATED TO ROADS, STORM DRAINAGE AND EROSION CONTROL SHALL CONFORM TO THE STANDARDS AND REQUIREMENTS OF THE MOST RECENT VERSION OF THE RELEVANT ADOPTED EL PASO COUNTY STANDARDS, INCLUDING THE LAND DEVELOPMENT CODE, THE ENGINEERING CRITERIA MANUAL, THE DRAINAGE CRITERIA MANUAL, AND THE DRAINAGE CRITERIA MANUAL VOLUME 2. ANY DEVIATIONS FROM REGULATIONS AND STANDARDS MUST BE REQUESTED, AND APPROVED, IN WRITING. ANY MODIFICATIONS NECESSARY TO MEET CRITERIA AFTER-THE-FACT WILL BE ENTIRELY THE DEVELOPER'S RESPONSIBILITY TO RECTIFY.
- IT IS THE DESIGN ENGINEER'S RESPONSIBILITY TO ACCURATELY SHOW EXISTING CONDITIONS, BOTH ONSITE AND OFFSITE, ON THE CONSTRUCTION PLANS. ANY MODIFICATIONS NECESSARY DUE TO CONFLICTS, OMISSIONS, OR CHANGED CONDITIONS WILL BE ENTIRELY THE DEVELOPER'S RESPONSIBILITY TO RECTIFY.
- CONTRACTOR SHALL SCHEDULE A PRE-CONSTRUCTION MEETING WITH EL PASO COUNTY PLANNING AND COMMUNITY DEVELOPMENT (PCD) -INSPECTIONS, PRIOR TO STARTING CONSTRUCTION.
- IT IS THE CONTRACTOR'S RESPONSIBILITY TO UNDERSTAND THE REQUIREMENTS OF ALL JURISDICTIONAL AGENCIES AND TO OBTAIN ALL REQUIRED PERMITS, INCLUDING BUT NOT LIMITED TO EL PASO COUNTY EROSION AND STORMWATER QUALITY CONTROL PERMIT (ESQCP), REGIONAL BUILDING FLOODPLAIN DEVELOPMENT PERMIT, U.S. ARMY CORPS OF ENGINEERS-ISSUED 401 AND/OR 404 PERMITS, AND COUNTY AND STATE FUGITIVE DUST PERMITS.
- CONTRACTOR SHALL NOT DEVIATE FROM THE PLANS WITHOUT FIRST OBTAINING WRITTEN APPROVAL FROM THE DESIGN ENGINEER AND PCD. CONTRACTOR SHALL NOTIFY THE DESIGN ENGINEER IMMEDIATELY UPON DISCOVERY OF ANY ERRORS OR INCONSISTENCIES.
- ALL STORM DRAIN PIPE SHALL BE CLASS III RCP UNLESS OTHERWISE NOTED AND APPROVED BY PCD.
- CONTRACTOR SHALL COORDINATE GEOTECHNICAL TESTING PER ECM STANDARDS. PAVEMENT DESIGN SHALL BE APPROVED BY EL PASO COUNTY PCD PRIOR TO PLACEMENT OF CURB AND GUTTER AND PAVEMENT.
- ALL CONSTRUCTION TRAFFIC MUST ENTER/EXIT THE SITE AT APPROVED CONSTRUCTION ACCESS POINTS. SIGHT VISIBILITY TRIANGLES AS IDENTIFIED IN THE PLANS SHALL BE PROVIDED AT ALL INTERSECTIONS. OBSTRUCTIONS GREATER THAN 18 INCHES ABOVE FLOWLINE ARE NOT ALLOWED WITHIN SIGHT TRIANGLES.
- SIGNING AND STRIPING SHALL COMPLY WITH EL PASO COUNTY DOT AND MUTCD CRITERIA. [IF APPLICABLE, ADDITIONAL SIGNING AND STRIPING NOTES WILL BE PROVIDED.]
- CONTRACTOR SHALL OBTAIN ANY PERMITS REQUIRED BY EL PASO COUNTY DOT, INCLUDING WORK WITHIN THE RIGHT-OF-WAY AND SPECIAL TRANSPORT PERMITS.
- THE LIMITS OF CONSTRUCTION SHALL REMAIN WITHIN THE PROPERTY LINE UNLESS OTHERWISE NOTED. THE OWNER/DEVELOPER SHALL OBTAIN WRITTEN PERMISSION AND EASEMENTS, WHERE REQUIRED, FROM ADJOINING PROPERTY OWNER(S) PRIOR TO ANY OFF-SITE DISTURBANCE, GRADING, OR CONSTRUCTION.
- EL PASO COUNTY DOES NOT OWN AND IS NOT RESPONSIBLE FOR THE UNDERDRAINS OR GROUNDWATER DISCHARGE SYSTEMS SHOWN ON THESE PLANS AND ASSUMES NO LIABILITY FOR WATER RIGHTS ADMINISTRATION BY APPROVING THESE PLANS. MAINTENANCE AND WATER RIGHTS ARE THE RESPONSIBILITY OF THE DEVELOPER AND _____ [XX METROPOLITAN DISTRICT, OR YY PROPERTY OWNERS ASSOCIATION]_____

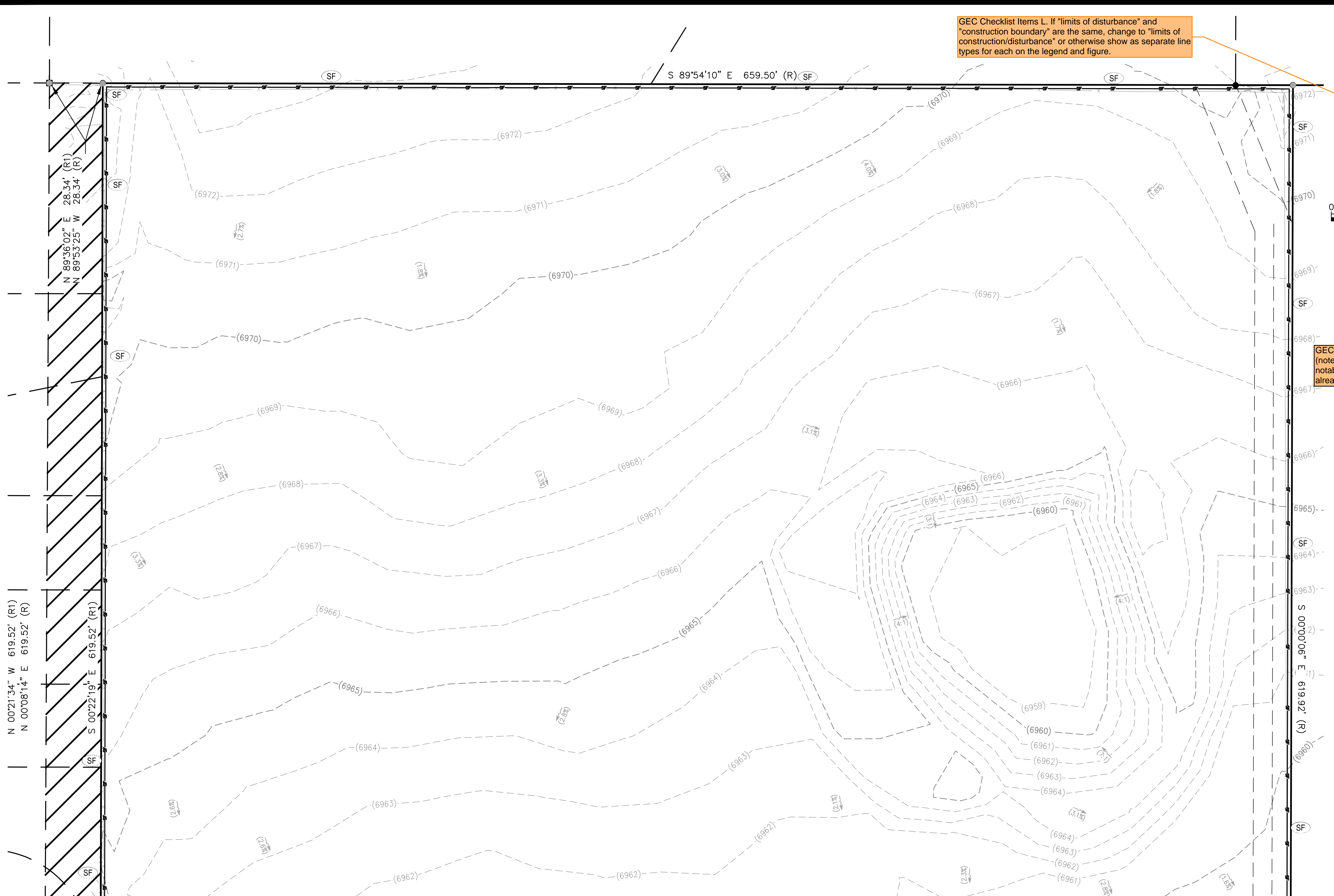
Apr 30, 2026 - 5:22pm by cmlerson X:\ENGINEERING\03\0015170 - Honor Charter School - Payson, CO\ENR\Construction Drawings\0015170_C01.dwg

320 North Lincoln Avenue Loveland, CO 80537		p: 970.613.1447 www.tait.com		ENGINEERING ENVIRONMENTAL BUILDING LAND SOUTH PLATTE DENVER SACRAMENTO SOUTH PLATTE DENVER SACRAMENTO							
<p>Since 1964</p>		<p>TAIT & ASSOCIATES</p>		DALLAS							
		<p>REVISIONS</p> <table border="1"> <thead> <tr> <th>NO.</th> <th>DESCRIPTION</th> <th>BY</th> <th>DATE</th> </tr> </thead> <tbody> <tr> <td> </td> <td> </td> <td> </td> <td> </td> </tr> </tbody> </table>		NO.	DESCRIPTION	BY	DATE				
NO.	DESCRIPTION	BY	DATE								
<p>DRAWING CW DATE: 11/11/2024</p> <p>CHECKED: DATE:</p> <p>REVISION #: DATE:</p> <p>JOB NO. C01517</p>		<p>G-2 OF 48</p>		<p>BRIAN CAMPBELL COLORADO P.E. #40196</p>							

FOR REVIEW ONLY
NOT FOR
CONSTRUCTION

PREPARED UNDER THE SUPERVISION OF
TAIT & ASSOCIATES, INC.

Apr 30, 2024 - 3:22pm by cmlerson X:\ENGINEERING\03\015170 - Honor Charter School - Payson, CO\ENR\Construction Drawings\015170_EC.dwg



GEC Checklist Items L. If "limits of disturbance" and "construction boundary" are the same, change to "limits of construction/disturbance" or otherwise show as separate line types for each on the legend and figure.

GEC Checklist item K. Show existing vegetation (notes are acceptable in cases where there is no notable vegetation, only grasses/weeds, or site has already been stripped)

SYMBOLS LEGEND

- PROPERTY LINE
- ADJACENT PROPERTY/ ROW LINE
- BUILDING SETBACK LINE
- - - PROPOSED EASEMENT
- LIMIT OF DISTURBANCE
- W EXISTING WATER LINE
- SS EXISTING SEWER LINE
- T PROPOSED TELEPHONE SERVICE LINE
- E PROPOSED ELECTRIC SERVICE LINE
- W PROPOSED WATER SERVICE LINE
- SS PROPOSED SS SERVICE LINE
- SD PROPOSED STORM DRAIN
- R PROPOSED RIDGELINE
- GB PROPOSED GRADE BREAK
- PROPOSED TOP OF POND
- PROPOSED BOTTOM OF POND
- GRADING DETAIL BOUNDARY
- PROPOSED SS CLEANOUT
- PROPOSED BACKFLOW PREVENTOR
- EXISTING FIRE HYDRANT
- PROPOSED FIRE HYDRANT
- PROPOSED STREET LIGHT
- EXISTING ELEVATION
- 40.00FS PROPOSED ELEVATION
- (2940) EXISTING CONTOUR
- 2940 PROPOSED CONTOUR
- (5.2%) EXISTING SLOPE
- 5.4% PROPOSED SLOPE
- EXISTING INLET
- PROPOSED INLET
- PROPOSED STORM INFRASTRUCTURE
- PROPOSED STORM MANHOLE
- PROPOSED TEE / THRUST BLOCK
- PROPOSED FLARED-END SECTION
- EXISTING SANITARY SEWER MANHOLE

EROSION CONTROL LEGEND

TITLE	KEY	SYMBOL	PHASE
CONCRETE WASHOUT	CW	○	INITIAL
PORTABLE TOILET	PT	□	INITIAL
VEHICLE TRACKING CONTROL	VTC	⊞	INITIAL
STABILIZED STAGING AREA	SSA	⊞	INITIAL
SILT FENCE	SF	—	INITIAL
RIPRAP	RR	▨	INITIAL
EROSION CONTROL BLANKET	ECB	▨	INITIAL
EROSION LOG	EL	—	INITIAL
DIVERSION DITCH	DD	—	INITIAL
SEDIMENT BASIN	SB	□	INITIAL

INITIAL EROSION CONTROL PLAN NORTH

UNAUTHORIZED CHANGES & USES

THE ENGINEER PREPARING THESE PLANS WILL NOT BE RESPONSIBLE FOR, OR LIABLE FOR, UNAUTHORIZED CHANGES TO OR USES OF THESE PLANS. ALL CHANGES OF THESE PLANS MUST BE IN WRITING AND MUST BE APPROVED BY THE PREPARER OF THESE PLANS PRIOR TO CONSTRUCTION. CONSTRUCTION CONTRACTOR AGREES THAT IN ACCORDANCE WITH GENERALLY ACCEPTED CONSTRUCTION PRACTICES, CONSTRUCTION CONTRACTOR WILL BE REQUIRED TO ASSUME SOLE AND COMPLETE RESPONSIBILITY FOR JOB SITE CONDITIONS DURING THE COURSE OF CONSTRUCTION OF THE PROJECT, INCLUDING SAFETY OF ALL PERSONS AND PROPERTY, THAT THIS REQUIREMENT SHALL BE MADE TO APPLY CONTINUOUSLY AND NOT BE LIMITED TO NORMAL WORKING HOURS, AND CONSTRUCTION CONTRACTOR FURTHER AGREES TO DEFEND, INDEMNIFY AND HOLD DESIGN PROFESSIONAL HARMLESS FROM ANY AND ALL LIABILITY, REAL OR ALLEGED, IN CONNECTION WITH THE PERFORMANCE OF WORK ON THIS PROJECT, EXCEPTING LIABILITY ARISING FROM THE SOLE NEGLIGENCE OF DESIGN PROFESSIONAL.

NOTE TO CONTRACTOR

THE EXISTENCE AND LOCATION OF ANY UNDERGROUND UTILITIES, PIPES, AND/OR STRUCTURES SHOWN ON THESE PLANS WERE OBTAINED BY A SEARCH OF AVAILABLE RECORDS. THERE MAY BE EXISTING UTILITIES NOT SHOWN ON THESE PLANS. THE CONTRACTOR SHALL ASCERTAIN THE TRUE VERTICAL AND HORIZONTAL LOCATION OF THOSE UNDERGROUND UTILITIES TO BE USED PRIOR TO CONSTRUCTION AND SHALL BE RESPONSIBLE FOR ANY DAMAGE TO ANY PUBLIC OR PRIVATE UTILITIES, SHOWN OR NOT SHOWN HEREON.

BASIS OF BEARINGS:
BEARINGS ARE BASED ON THE WESTERLY BOUNDARY OF THE SUBJECT PARCEL COINCIDENT WITH THE EASTERLY BOUNDARY OF THE BENT GRASS RESIDENTIAL FILING NO.2, MONUMENTED ON THE NORTH END WITH A NO.5 REBAR & 1-3/8" RED PLASTIC CAP MARKED "ALC PLS 38087", FOUND FLUSH WITH GRADE, AND ON THE SOUTH END WITH A NO. 4 REBAR & 1" ORANGE PLASTIC CAP MARKED "PLS 38141", RECOVERED 0.6 BELOW GRADE, AND IS ASSUMED TO BEAR N 00°08'14" E A MEASURED DISTANCE OF 619.52 FEET.

BENCHMARK:
ELEVATIONS ARE BASED ON THE PROJECT BENCHMARK IDENTIFIED AS JK0239 ELEVATION=6902.3'(NAVD88), PER DATA PUBLISHED BY THE NATIONAL GEODETIC SURVEY.

FOR REVIEW ONLY
NOT FOR CONSTRUCTION



320 North Lincoln Avenue
Loveland, CO 80537
p: 970.613.1447
www.tait.com

ENGINEERING ENVIRONMENTAL BUILDING LAND
SACRAMENTO DENVER
SANTA FE BOULDER HUNTER
SINCE 1964

REVISIONS

NO.	DESCRIPTION	BY	DATE

INITIAL EROSION CONTROL PLAN NORTH

HONOR CHARTER SCHOOL
HIGHMARK SCHOOL DEVELOPMENT
8250 BENT GRASS MEADOWS DR.

DRAWING CW
DATE 11/11/2024
CHECKED
DATE
REVISION #
DATE
JOB NO. C01517

PREPARED UNDER THE SUPERVISION OF
TAIT & ASSOCIATES, INC.

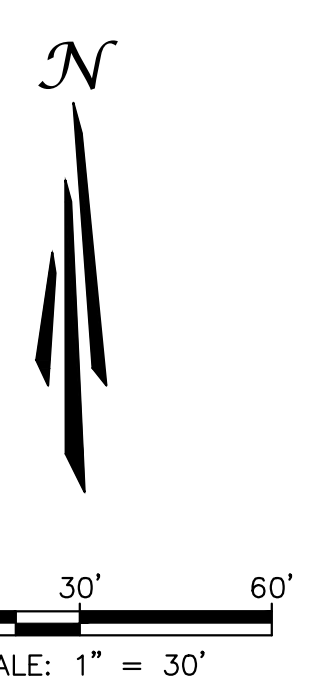
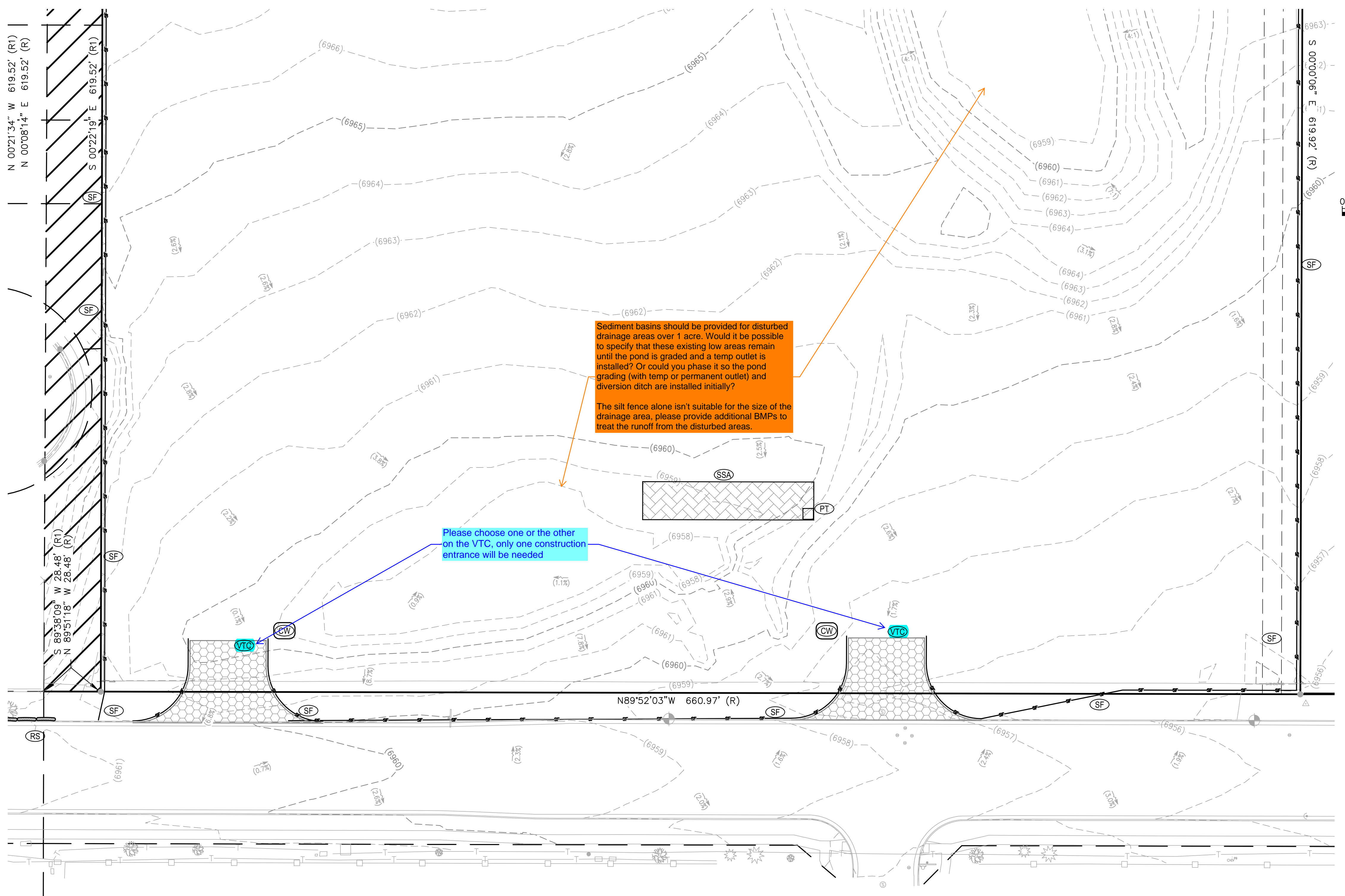
BRIAN CAMPBELL
COLORADO P.E. #40196

G-3
OF
48

2/6/2024 Internal Review #1

FOR REVIEW ONLY - NOT FOR CONSTRUCTION

Apr 30, 2026 - 3:22pm by cmlerson X:\ENGINEERING\CO\CO1517\Construction Drawings\CO1517_EC.dwg



SYMBOLS LEGEND

- PROPERTY LINE
ADJACENT PROPERTY/ ROW LINE
BUILDING SETBACK LINE
PROPOSED EASEMENT
LIMIT OF DISTURBANCE
EXISTING WATER LINE
EXISTING SEWER LINE
PROPOSED TELEPHONE SERVICE LINE
PROPOSED ELECTRIC SERVICE LINE
PROPOSED WATER SERVICE LINE
PROPOSED SS SERVICE LINE
PROPOSED STORM DRAIN
PROPOSED RIDGELINE
PROPOSED GRADE BREAK
PROPOSED TOP OF POND
PROPOSED BOTTOM OF POND
GRADING DETAIL BOUNDARY
PROPOSED SS CLEANOUT
PROPOSED BACKFLOW PREVENTOR
EXISTING FIRE HYDRANT
PROPOSED FIRE HYDRANT
PROPOSED STREET LIGHT
EXISTING ELEVATION
PROPOSED ELEVATION
EXISTING CONTOUR
PROPOSED CONTOUR
EXISTING SLOPE
PROPOSED SLOPE
EXISTING INLET
PROPOSED INLET
PROPOSED STORM INFRASTRUCTURE
PROPOSED STORM MANHOLE
PROPOSED TEE / THRUST BLOCK
PROPOSED FLARED-END SECTION
EXISTING SANITARY SEWER MANHOLE

EROSION CONTROL LEGEND

Table with columns: TITLE, KEY, SYMBOL, PHASE. Includes items like CONCRETE WASHOUT, PORTABLE TOILET, VEHICLE TRACKING CONTROL, STABILIZED STAGING AREA, SILT FENCE, RIPRAP, EROSION CONTROL BLANKET, EROSION LOG, DIVERSION DITCH, and SEDIMENT BASIN.

Sediment basins should be provided for disturbed drainage areas over 1 acre. Would it be possible to specify that these existing low areas remain until the pond is graded and a temp outlet is installed? Or could you phase it so the pond grading (with temp or permanent outlet) and diversion ditch are installed initially?
The silt fence alone isn't suitable for the size of the drainage area, please provide additional BMPs to treat the runoff from the disturbed areas.

Please choose one or the other on the VTC, only one construction entrance will be needed

Show on plans

INITIAL EROSION CONTROL PLAN SOUTH

UNAUTHORIZED CHANGES & USES

THE ENGINEER PREPARING THESE PLANS WILL NOT BE RESPONSIBLE FOR, OR LIABLE FOR, UNAUTHORIZED CHANGES TO OR USES OF THESE PLANS. ALL CHANGES OF THESE PLANS MUST BE IN WRITING AND MUST BE APPROVED BY THE PREPARER OF THESE PLANS PRIOR TO CONSTRUCTION.

NOTE TO CONTRACTOR

THE EXISTENCE AND LOCATION OF ANY UNDERGROUND UTILITIES, PIPES, AND/OR STRUCTURES SHOWN ON THESE PLANS WERE OBTAINED BY A SEARCH OF AVAILABLE RECORDS. THERE MAY BE EXISTING UTILITIES NOT SHOWN ON THESE PLANS.

BASIS OF BEARINGS: BEARINGS ARE BASED ON THE WESTERLY BOUNDARY OF THE SUBJECT PARCEL COINCIDENT WITH THE EASTERLY BOUNDARY OF THE BENT GRASS RESIDENTIAL FILING NO.2, MONUMENTED ON THE NORTH END WITH A NO.5 REBAR & 1-3/8" RED PLASTIC CAP MARKED "ALC PLS 38087", FOUND FLUSH WITH GRADE, AND ON THE SOUTH END WITH A NO. 4 REBAR & 1" ORANGE PLASTIC CAP MARKED "PLS 38141", RECOVERED 0.6 BELOW GRADE, AND IS ASSUMED TO BEAR N 00°08'14" E A MEASURED DISTANCE OF 619.52 FEET.

BENCHMARK: ELEVATIONS ARE BASED ON THE PROJECT BENCHMARK IDENTIFIED AS JK0239 ELEVATION=6902.3'(NAVD88), PER DATA PUBLISHED BY THE NATIONAL GEODETIC SURVEY.

PREPARED UNDER THE SUPERVISION OF TAIT & ASSOCIATES, INC.

Table with columns: DRAWING, DATE, CHECKED, DATE, REVISION #, DATE, JOB NO. Includes entries for 11/11/2024 and 01517.

INITIAL EROSION CONTROL PLAN SOUTH
HONOR CHARTER SCHOOL
HIGHMARK SCHOOL DEVELOPMENT
8250 BENT GRASS MEADOWS DR.

TAIT & ASSOCIATES
320 North Lincoln Avenue
Loveland, CO 80537
p: 970.613.1447
www.tait.com
ENGINEERING ENVIRONMENTAL BUILDING LAND
DALLAS SACRAMENTO DENVER
SANTA FE DURANGO FORT COLLINS
Since 1964



FOR REVIEW ONLY
NOT FOR CONSTRUCTION

BRIAN CAMPBELL
COLORADO P.E. #40196

Apr 30, 2026 - 5:22pm by cmlerson X:\ENGINEERING\01\015170 - Honor Charter School - Payson, CO\ENR\Construction Drawings\015170_EC.dwg



UNAUTHORIZED CHANGES & USES

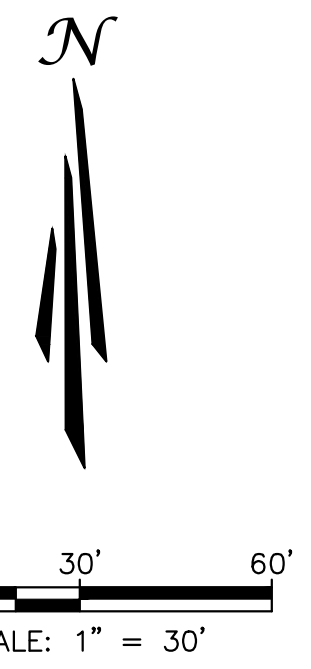
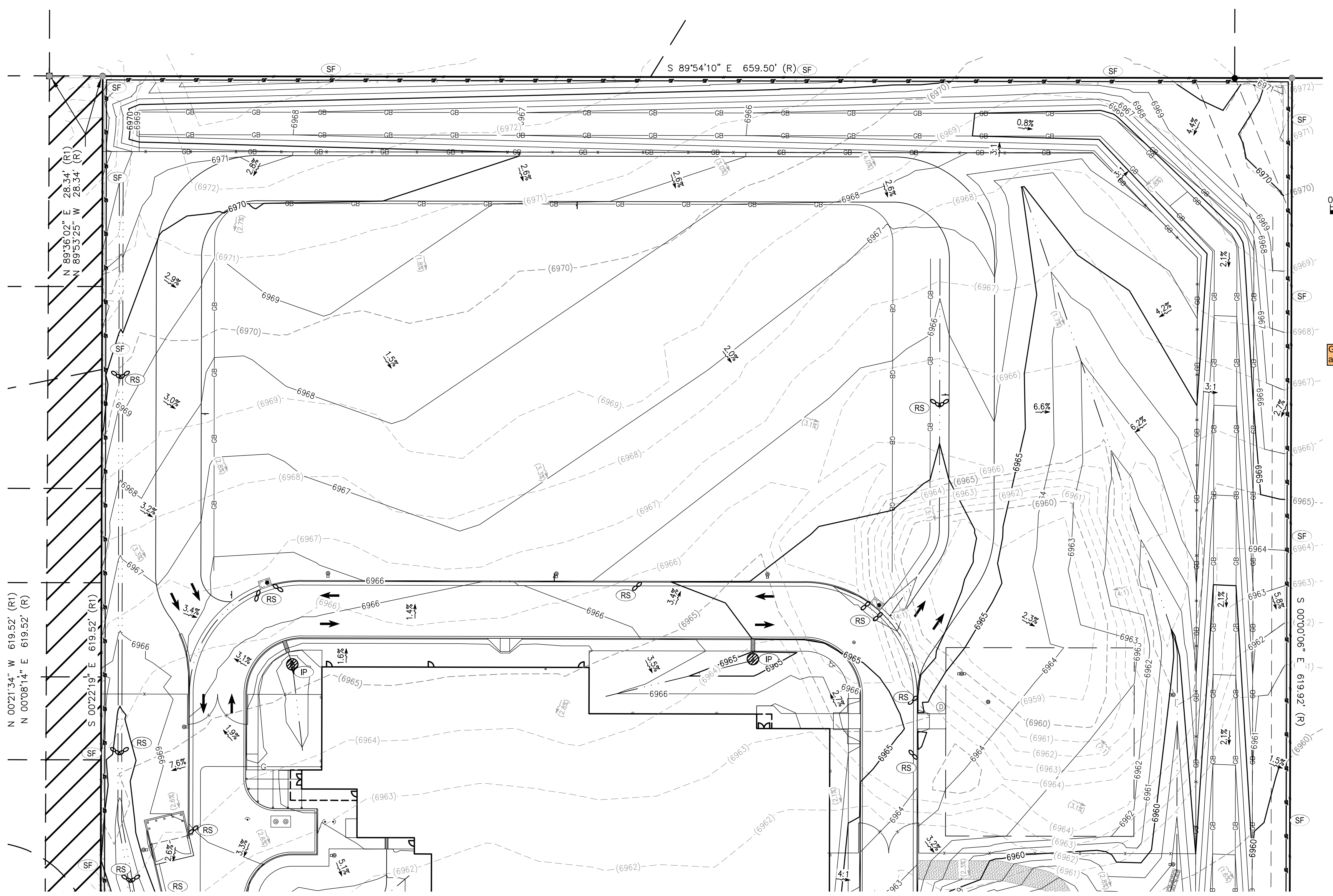
THE ENGINEER PREPARING THESE PLANS WILL NOT BE RESPONSIBLE FOR, OR LIABLE FOR, UNAUTHORIZED CHANGES TO OR USES OF THESE PLANS. ALL CHANGES OF THESE PLANS MUST BE IN WRITING AND MUST BE APPROVED BY THE PREPARER OF THESE PLANS PRIOR TO CONSTRUCTION. CONSTRUCTION CONTRACTOR AGREES THAT IN ACCORDANCE WITH GENERALLY ACCEPTED CONSTRUCTION PRACTICES, CONSTRUCTION CONTRACTOR WILL BE REQUIRED TO ASSUME SOLE AND COMPLETE RESPONSIBILITY FOR JOB SITE CONDITIONS DURING THE COURSE OF CONSTRUCTION OF THE PROJECT, INCLUDING SAFETY OF ALL PERSONS AND PROPERTY, THAT THIS REQUIREMENT SHALL BE MADE TO APPLY CONTINUOUSLY AND NOT BE LIMITED TO NORMAL WORKING HOURS, AND CONSTRUCTION CONTRACTOR FURTHER AGREES TO DEFEND, INDEMNIFY AND HOLD DESIGN PROFESSIONAL HARMLESS FROM ANY AND ALL LIABILITY, REAL OR ALLEGED, IN CONNECTION WITH THE PERFORMANCE OF WORK ON THIS PROJECT, EXCEPTING LIABILITY ARISING FROM THE SOLE NEGLIGENCE OF DESIGN PROFESSIONAL.

NOTE TO CONTRACTOR

THE EXISTENCE AND LOCATION OF ANY UNDERGROUND UTILITIES, PIPES, AND/OR STRUCTURES SHOWN ON THESE PLANS WERE OBTAINED BY A SEARCH OF AVAILABLE RECORDS. THERE MAY BE EXISTING UTILITIES NOT SHOWN ON THESE PLANS. THE CONTRACTOR SHALL ASCERTAIN THE TRUE VERTICAL AND HORIZONTAL LOCATION OF THOSE UNDERGROUND UTILITIES TO BE USED PRIOR TO CONSTRUCTION AND SHALL BE RESPONSIBLE FOR ANY DAMAGE TO ANY PUBLIC OR PRIVATE UTILITIES, SHOWN OR NOT SHOWN HEREON.

BASIS OF BEARINGS:
BEARINGS ARE BASED ON THE WESTERLY BOUNDARY OF THE SUBJECT PARCEL COINCIDENT WITH THE EASTERLY BOUNDARY OF THE BENT GRASS RESIDENTIAL FILING NO.2, MONUMENTED ON THE NORTH END WITH A NO.5 REBAR & 1-3/8" RED PLASTIC CAP MARKED "ALC PLS 38087", FOUND FLUSH WITH GRADE, AND ON THE SOUTH END WITH A NO. 4 REBAR & 1" ORANGE PLASTIC CAP MARKED "PLS 38141", RECOVERED 0.6 BELOW GRADE, AND IS ASSUMED TO BEAR N 00°08'14" E A MEASURED DISTANCE OF 619.52 FEET.

BENCHMARK:
ELEVATIONS ARE BASED ON THE PROJECT BENCHMARK IDENTIFIED AS JK0239 ELEVATION=6902.3'(NAVD88), PER DATA PUBLISHED BY THE NATIONAL GEODETIC SURVEY.



SYMBOLS LEGEND

- PROPERTY LINE
- ADJACENT PROPERTY/ ROW LINE
- BUILDING SETBACK LINE
- - - PROPOSED EASEMENT
- - - LIMIT OF DISTURBANCE
- W — EXISTING WATER LINE
- SS — EXISTING SEWER LINE
- T — PROPOSED TELEPHONE SERVICE LINE
- E — PROPOSED ELECTRIC SERVICE LINE
- W — PROPOSED WATER SERVICE LINE
- SS — PROPOSED SS SERVICE LINE
- SD — PROPOSED STORM DRAIN
- R — PROPOSED RIDGELINE
- GB — PROPOSED GRADE BREAK
- - - PROPOSED TOP OF POND
- - - PROPOSED BOTTOM OF POND
- - - GRADING DETAIL BOUNDARY
- PROPOSED SS CLEANOUT
- PROPOSED BACKFLOW PREVENTOR
- EXISTING FIRE HYDRANT
- PROPOSED FIRE HYDRANT
- PROPOSED STREET LIGHT
- EXISTING ELEVATION
- PROPOSED ELEVATION
- EXISTING CONTOUR
- PROPOSED CONTOUR
- EXISTING SLOPE
- PROPOSED SLOPE
- EXISTING INLET
- PROPOSED INLET
- PROPOSED STORM INFRASTRUCTURE
- PROPOSED STORM MANHOLE
- PROPOSED TEE / THRUST BLOCK
- PROPOSED FLARED-END SECTION
- EXISTING SANITARY SEWER MANHOLE

GEC Checklist Item O. Show proposed areas of cut and fill.

EROSION CONTROL LEGEND

TITLE	KEY	SYMBOL	PHASE
CONCRETE WASHOUT	CW	○	INITIAL
PORTABLE TOILET	PT	□	INITIAL
VEHICLE TRACKING CONTROL	VTC	⊞	INITIAL
STABILIZED STAGING AREA	SSA	⊞	INITIAL
SILT FENCE	SF	—	INITIAL
RIPRAP	RR	▨	INITIAL
EROSION CONTROL BLANKET	ECB	▨	INITIAL
EROSION LOG	EL	—	INITIAL
DIVERSION DITCH	DD	—	INITIAL
SEDIMENT BASIN	SB	□	INITIAL
DRAIN INLET PROTECTION	IP	○	INTERIM
ROCK/CURB SOCK	RS	○	INTERIM

INTERIM EROSION CONTROL PLAN NORTH

FOR REVIEW ONLY
NOT FOR CONSTRUCTION

PREPARED UNDER THE SUPERVISION OF
TAIT & ASSOCIATES, INC.

DRAWING CW
DATE: 11/11/2024
CHECKED:
DATE:
REVISION #:
DATE:
JOB NO. C01517

G-5
OF
48

BRIAN CAMPBELL
COLORADO P.E. #40196

INTERIM EROSION CONTROL PLAN NORTH

HONOR CHARTER SCHOOL
HIGHMARK SCHOOL DEVELOPMENT
8250 BENT GRASS MEADOWS DR.

320 North Lincoln Avenue
Loveland, CO 80537
p: 970.613.1447
www.tait.com
ENGINEERING ENVIRONMENTAL BUILDING LAND
SANTA FE SPRING DENVER
SANTA FE COORADO ILLINOIS
Since 1964

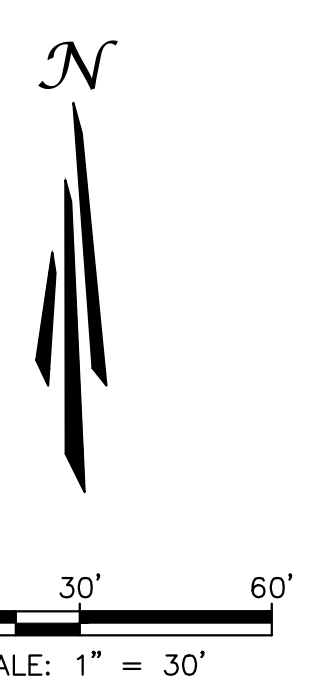
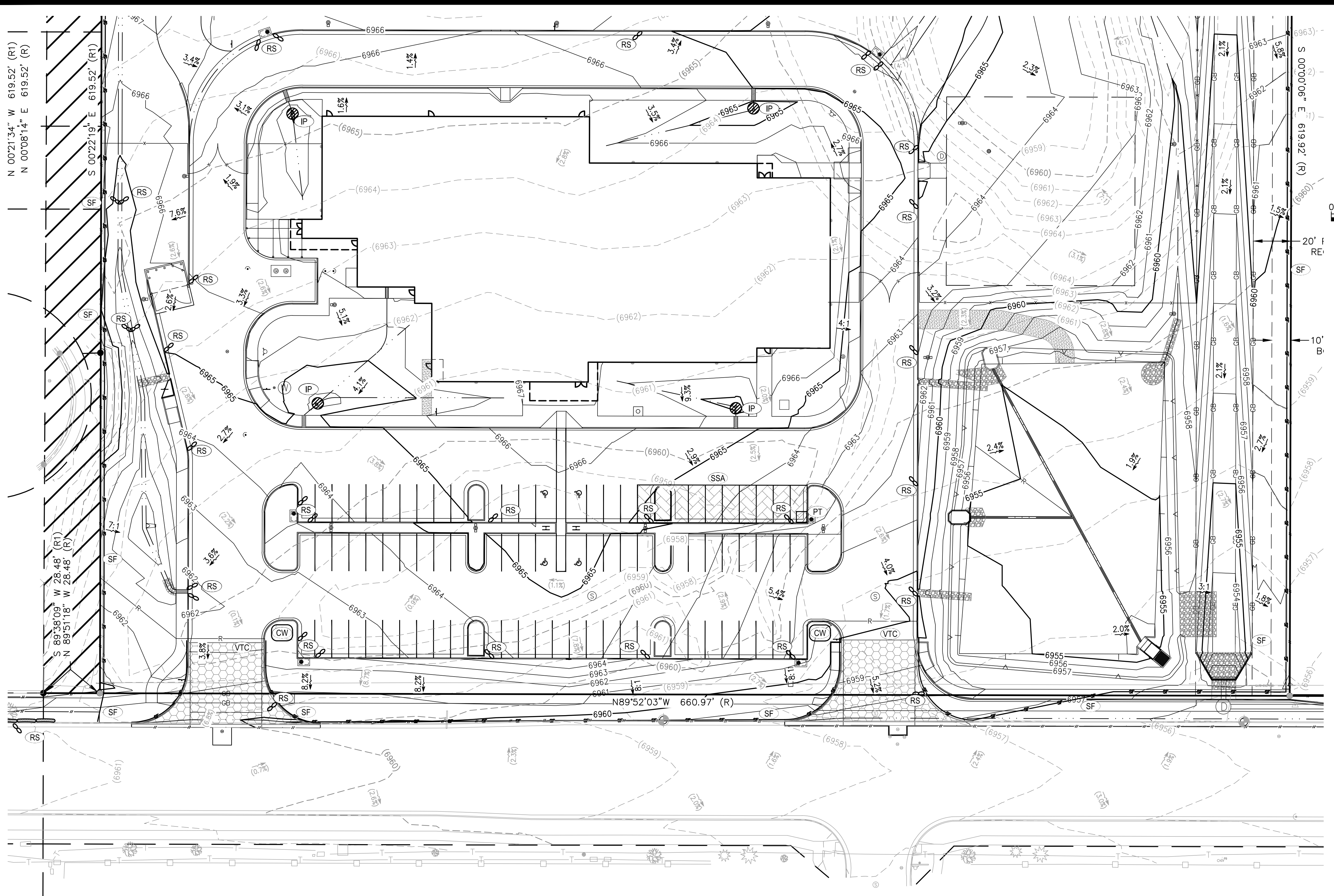
TAIT
& ASSOCIATES

NO.	DESCRIPTION	BY	DATE

FOR REVIEW ONLY - NOT FOR CONSTRUCTION

2/6/2024 Internal Review #1

Apr 30, 2026 - 5:22pm by cmlerson X:\ENGINEERING\CO\CO1517\0 - Payson, CO\ENR\Construction Drawings\CO1517_EC.dwg



SYMBOLS LEGEND

- PROPERTY LINE
- ADJACENT PROPERTY/ ROW LINE
- BUILDING SETBACK LINE
- - - PROPOSED EASEMENT
- - - LIMIT OF DISTURBANCE
- W EXISTING WATER LINE
- SS EXISTING SEWER LINE
- T PROPOSED TELEPHONE SERVICE LINE
- E PROPOSED ELECTRIC SERVICE LINE
- W PROPOSED WATER SERVICE LINE
- SS PROPOSED SS SERVICE LINE
- SD PROPOSED STORM DRAIN
- R PROPOSED RIDGELINE
- GB PROPOSED GRADE BREAK
- PROPOSED TOP OF POND
- - - PROPOSED BOTTOM OF POND
- - - GRADING DETAIL BOUNDARY
- PROPOSED SS CLEANOUT
- PROPOSED BACKFLOW PREVENTOR
- EXISTING FIRE HYDRANT
- PROPOSED FIRE HYDRANT
- PROPOSED STREET LIGHT
- EXISTING ELEVATION
- PROPOSED ELEVATION
- EXISTING CONTOUR
- PROPOSED CONTOUR
- EXISTING SLOPE
- PROPOSED SLOPE
- EXISTING INLET
- PROPOSED INLET
- PROPOSED STORM INFRASTRUCTURE
- PROPOSED STORM MANHOLE
- PROPOSED TEE / THRUST BLOCK
- PROPOSED FLARED-END SECTION
- EXISTING SANITARY SEWER MANHOLE

EROSION CONTROL LEGEND

TITLE	KEY	SYMBOL	PHASE
CONCRETE WASHOUT	CW	○	INITIAL
PORTABLE TOILET	PT	□	INITIAL
VEHICLE TRACKING CONTROL	VTC	⊞	INITIAL
STABILIZED STAGING AREA	SSA	⊞	INITIAL
SILT FENCE	SF	—	INITIAL
RIPRAP	RR	▨	INITIAL
EROSION CONTROL BLANKET	ECB	▨	INITIAL
EROSION LOG	EL	—	INITIAL
DIVERSION DITCH	DD	—	INITIAL
SEDIMENT BASIN	SB	□	INITIAL
DRAIN INLET PROTECTION	IP	○	INTERIM
ROCK/CURB SOCK	RS	○	INTERIM

INTERIM EROSION CONTROL PLAN SOUTH

UNAUTHORIZED CHANGES & USES

THE ENGINEER PREPARING THESE PLANS WILL NOT BE RESPONSIBLE FOR, OR LIABLE FOR, UNAUTHORIZED CHANGES TO OR USES OF THESE PLANS. ALL CHANGES OF THESE PLANS MUST BE IN WRITING AND MUST BE APPROVED BY THE PREPARER OF THESE PLANS PRIOR TO CONSTRUCTION. CONSTRUCTION CONTRACTOR AGREES THAT IN ACCORDANCE WITH GENERALLY ACCEPTED CONSTRUCTION PRACTICES, CONSTRUCTION CONTRACTOR WILL BE REQUIRED TO ASSUME SOLE AND COMPLETE RESPONSIBILITY FOR JOB SITE CONDITIONS DURING THE COURSE OF CONSTRUCTION OF THE PROJECT, INCLUDING SAFETY OF ALL PERSONS AND PROPERTY, THAT THIS REQUIREMENT SHALL BE MADE TO APPLY CONTINUOUSLY AND NOT BE LIMITED TO NORMAL WORKING HOURS, AND CONSTRUCTION CONTRACTOR FURTHER AGREES TO DEFEND, INDEMNIFY AND HOLD DESIGN PROFESSIONAL HARMLESS FROM ANY AND ALL LIABILITY, REAL OR ALLEGED, IN CONNECTION WITH THE PERFORMANCE OF WORK ON THIS PROJECT, EXCEPTING LIABILITY ARISING FROM THE SOLE NEGLIGENCE OF DESIGN PROFESSIONAL.

NOTE TO CONTRACTOR

THE EXISTENCE AND LOCATION OF ANY UNDERGROUND UTILITIES, PIPES, AND/OR STRUCTURES SHOWN ON THESE PLANS WERE OBTAINED BY A SEARCH OF AVAILABLE RECORDS. THERE MAY BE EXISTING UTILITIES NOT SHOWN ON THESE PLANS. THE CONTRACTOR SHALL ASCERTAIN THE TRUE VERTICAL AND HORIZONTAL LOCATION OF THOSE UNDERGROUND UTILITIES TO BE USED PRIOR TO CONSTRUCTION AND SHALL BE RESPONSIBLE FOR ANY DAMAGE TO ANY PUBLIC OR PRIVATE UTILITIES, SHOWN OR NOT SHOWN HEREON.

BASIS OF BEARINGS:
BEARINGS ARE BASED ON THE WESTERLY BOUNDARY OF THE SUBJECT PARCEL COINCIDENT WITH THE EASTERLY BOUNDARY OF THE BENT GRASS RESIDENTIAL FILING NO.2, MONUMENTED ON THE NORTH END WITH A NO.5 REBAR & 1-3/8" RED PLASTIC CAP MARKED "ALC PLS 38087", FOUND FLUSH WITH GRADE, AND ON THE SOUTH END WITH A NO. 4 REBAR & 1" ORANGE PLASTIC CAP MARKED "PLS 38141", RECOVERED 0.6 BELOW GRADE, AND IS ASSUMED TO BEAR N 00°08'14" E A MEASURED DISTANCE OF 619.52 FEET.

BENCHMARK:
ELEVATIONS ARE BASED ON THE PROJECT BENCHMARK IDENTIFIED AS JK0239 ELEVATION=6902.3'(NAVD88), PER DATA PUBLISHED BY THE NATIONAL GEODETIC SURVEY.

FOR REVIEW ONLY
NOT FOR
CONSTRUCTION

PREPARED UNDER THE SUPERVISION OF
TAIT & ASSOCIATES, INC.



320 North Lincoln Avenue
Loveland, CO 80537
p: 970.613.1447
www.tait.com
ENGINEERING ENVIRONMENTAL BUILDING LAND
DALLAS DENVER SACRAMENTO
SAN LUIS OBISPO INVERNESS

TAIT
& ASSOCIATES
Since 1964
REVISIONS

INTERIM EROSION CONTROL PLAN SOUTH

HONOR CHARTER SCHOOL
HIGHMARK SCHOOL DEVELOPMENT
8250 BENT GRASS MEADOWS DR.

REVISIONS
NO. DESCRIPTION BY DATE

DRAWING: CW
DATE: 11/11/2024
CHECKED:
DATE:
REVISED:
DATE:
JOB NO.: CO1517

G-6

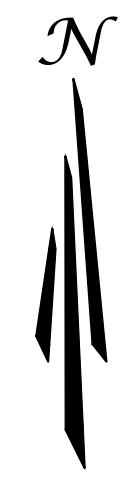
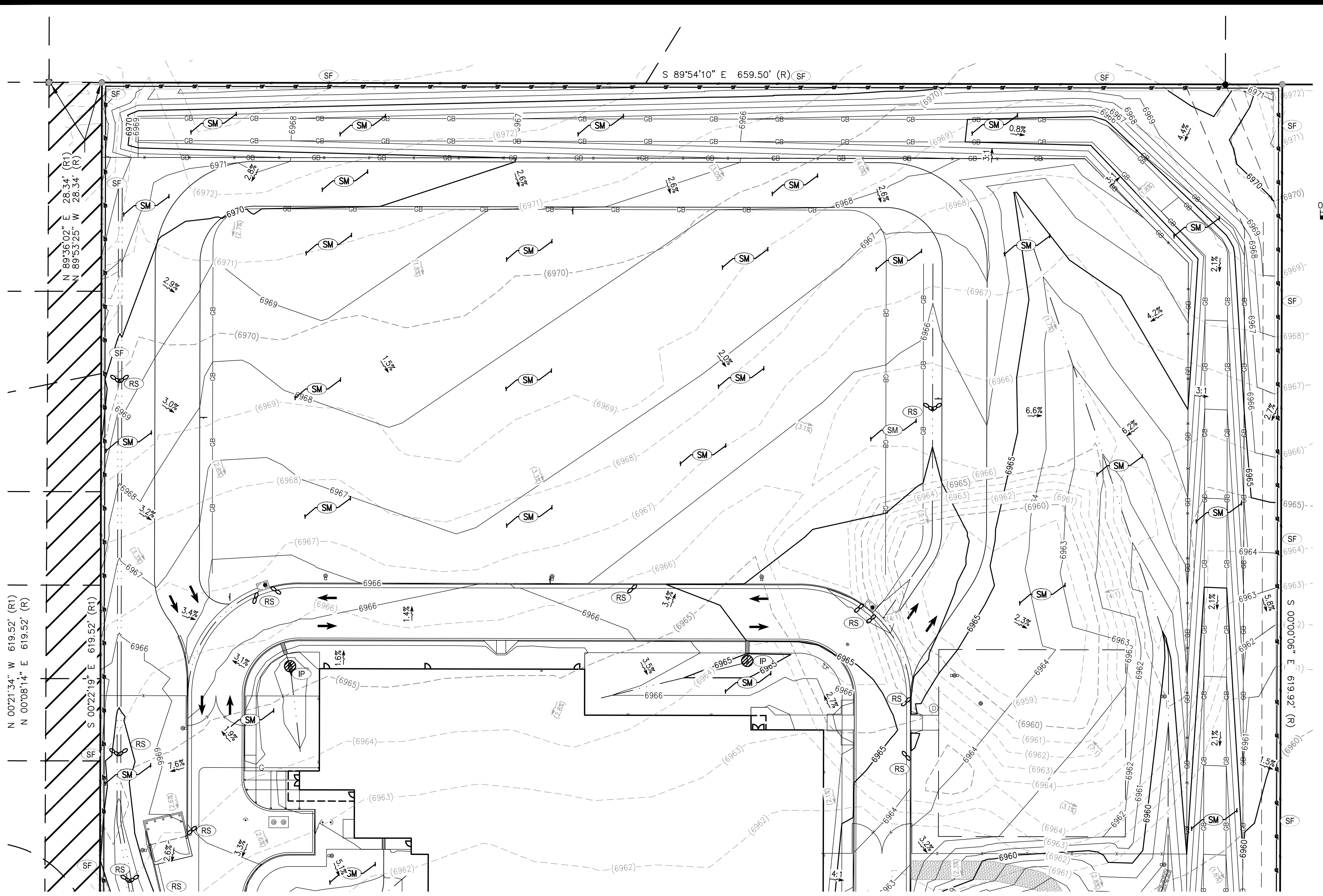
OF

48

2/6/2024 Internal Review #1

BRIAN CAMPBELL
COLORADO P.E. #40196
FOR REVIEW ONLY - NOT FOR CONSTRUCTION

Apr 30, 2026 - 5:22pm by cmlerson X:\ENGINEERING\CD\015170 - Honor Charter School - Payson, CO\ENR\Construction Drawings\CD\015170.EC.dwg



SCALE: 1" = 30'

SYMBOLS LEGEND

- PROPERTY LINE
- ADJACENT PROPERTY/ ROW LINE
- BUILDING SETBACK LINE
- - - PROPOSED EASEMENT
- - - LIMIT OF DISTURBANCE
- W EXISTING WATER LINE
- SS EXISTING SEWER LINE
- T PROPOSED TELEPHONE SERVICE LINE
- E PROPOSED ELECTRIC SERVICE LINE
- W PROPOSED WATER SERVICE LINE
- SS PROPOSED SS SERVICE LINE
- SD PROPOSED STORM DRAIN
- R PROPOSED RIDGELINE
- GB PROPOSED GRADE BREAK
- - - PROPOSED TOP OF POND
- - - PROPOSED BOTTOM OF POND
- - - GRADING DETAIL BOUNDARY
- PROPOSED SS CLEANOUT
- PROPOSED BACKFLOW PREVENTOR
- EXISTING FIRE HYDRANT
- PROPOSED FIRE HYDRANT
- PROPOSED STREET LIGHT
- EXISTING ELEVATION
- PROPOSED ELEVATION
- EXISTING CONTOUR
- PROPOSED CONTOUR
- EXISTING SLOPE
- PROPOSED SLOPE
- EXISTING INLET
- PROPOSED INLET
- PROPOSED STORM INFRASTRUCTURE
- PROPOSED STORM MANHOLE
- PROPOSED TEE / THRUST BLOCK
- PROPOSED FLARED-END SECTION
- EXISTING SANITARY SEWER MANHOLE

EROSION CONTROL LEGEND

TITLE	KEY	SYMBOL	PHASE
CONCRETE WASHOUT	CW	○	INITIAL
PORTABLE TOILET	PT	□	INITIAL
VEHICLE TRACKING CONTROL	VTC	⊞	INITIAL
STABILIZED STAGING AREA	SSA	⊞	INITIAL
SILT FENCE	SF	—	INITIAL
RIPRAP	RR	▨	INITIAL
EROSION CONTROL BLANKET	ECB	▨	INITIAL
EROSION LOG	EL	—	INITIAL
DIVERSION DITCH	DD	—	INITIAL
SEDIMENT BASIN	SB	□	INITIAL
DRAIN INLET PROTECTION	IP	○	INTERIM
ROCK/CURB SOCK	RS	○	INTERIM
SEEDING AND MULCHING	SM	○	FINAL

FINAL EROSION CONTROL PLAN NORTH

UNAUTHORIZED CHANGES & USES

THE ENGINEER PREPARING THESE PLANS WILL NOT BE RESPONSIBLE FOR, OR LIABLE FOR, UNAUTHORIZED CHANGES TO OR USES OF THESE PLANS. ALL CHANGES OF THESE PLANS MUST BE IN WRITING AND MUST BE APPROVED BY THE PREPARER OF THESE PLANS PRIOR TO CONSTRUCTION. CONSTRUCTION CONTRACTOR AGREES THAT IN ACCORDANCE WITH GENERALLY ACCEPTED CONSTRUCTION PRACTICES, CONSTRUCTION CONTRACTOR WILL BE REQUIRED TO ASSUME SOLE AND COMPLETE RESPONSIBILITY FOR JOB SITE CONDITIONS DURING THE COURSE OF CONSTRUCTION OF THE PROJECT, INCLUDING SAFETY OF ALL PERSONS AND PROPERTY, THAT THIS REQUIREMENT SHALL BE MADE TO APPLY CONTINUOUSLY AND NOT BE LIMITED TO NORMAL WORKING HOURS, AND CONSTRUCTION CONTRACTOR FURTHER AGREES TO DEFEND, INDEMNIFY AND HOLD DESIGN PROFESSIONAL HARMLESS FROM ANY AND ALL LIABILITY, REAL OR ALLEGED, IN CONNECTION WITH THE PERFORMANCE OF WORK ON THIS PROJECT, EXCEPTING LIABILITY ARISING FROM THE SOLE NEGLIGENCE OF DESIGN PROFESSIONAL.

NOTE TO CONTRACTOR

THE EXISTENCE AND LOCATION OF ANY UNDERGROUND UTILITIES, PIPES, AND/OR STRUCTURES SHOWN ON THESE PLANS WERE OBTAINED BY A SEARCH OF AVAILABLE RECORDS. THERE MAY BE EXISTING UTILITIES NOT SHOWN ON THESE PLANS. THE CONTRACTOR SHALL ASCERTAIN THE TRUE VERTICAL AND HORIZONTAL LOCATION OF THOSE UNDERGROUND UTILITIES TO BE USED PRIOR TO CONSTRUCTION AND SHALL BE RESPONSIBLE FOR ANY DAMAGE TO ANY PUBLIC OR PRIVATE UTILITIES, SHOWN OR NOT SHOWN HEREON.

BASIS OF BEARINGS:
BEARINGS ARE BASED ON THE WESTERLY BOUNDARY OF THE SUBJECT PARCEL COINCIDENT WITH THE EASTERLY BOUNDARY OF THE BENT GRASS RESIDENTIAL FILING NO.2, MONUMENTED ON THE NORTH END WITH A NO.5 REBAR & 1-3/8" RED PLASTIC CAP MARKED "ALC PLS 38087", FOUND FLUSH WITH GRADE, AND ON THE SOUTH END WITH A NO. 4 REBAR & 1" ORANGE PLASTIC CAP MARKED "PLS 38141", RECOVERED 0.6 BELOW GRADE, AND IS ASSUMED TO BEAR N 00°08'14" E A MEASURED DISTANCE OF 619.52 FEET.

BENCHMARK:
ELEVATIONS ARE BASED ON THE PROJECT BENCHMARK IDENTIFIED AS JK0239 ELEVATION=6902.3'(NAVD88), PER DATA PUBLISHED BY THE NATIONAL GEODETIC SURVEY.

FOR REVIEW ONLY
NOT FOR
CONSTRUCTION



320 North Lincoln Avenue
Loveland, CO 80537
p: 970.613.1447
www.tait.com
ENGINEERING ENVIRONMENTAL BUILDING LAND
SANTA FE SPRING SACRAMENTO DENVER
SANTA FE COORADO ILLINOIS
Since 1964

TAIT
& ASSOCIATES

REVISIONS

NO.	DESCRIPTION	BY	DATE

FINAL EROSION CONTROL PLAN NORTH

HONOR CHARTER SCHOOL
HIGHMARK SCHOOL DEVELOPMENT
8250 BENT GRASS MEADOWS DR.

DRAWING CW
DATE: 11/11/2024
CHECKED:
DATE:
REVISION #:
DATE:
JOB NO. C01517

PREPARED UNDER THE SUPERVISION OF
TAIT & ASSOCIATES, INC.

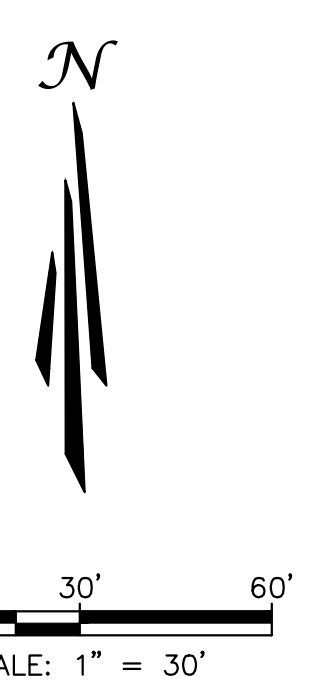
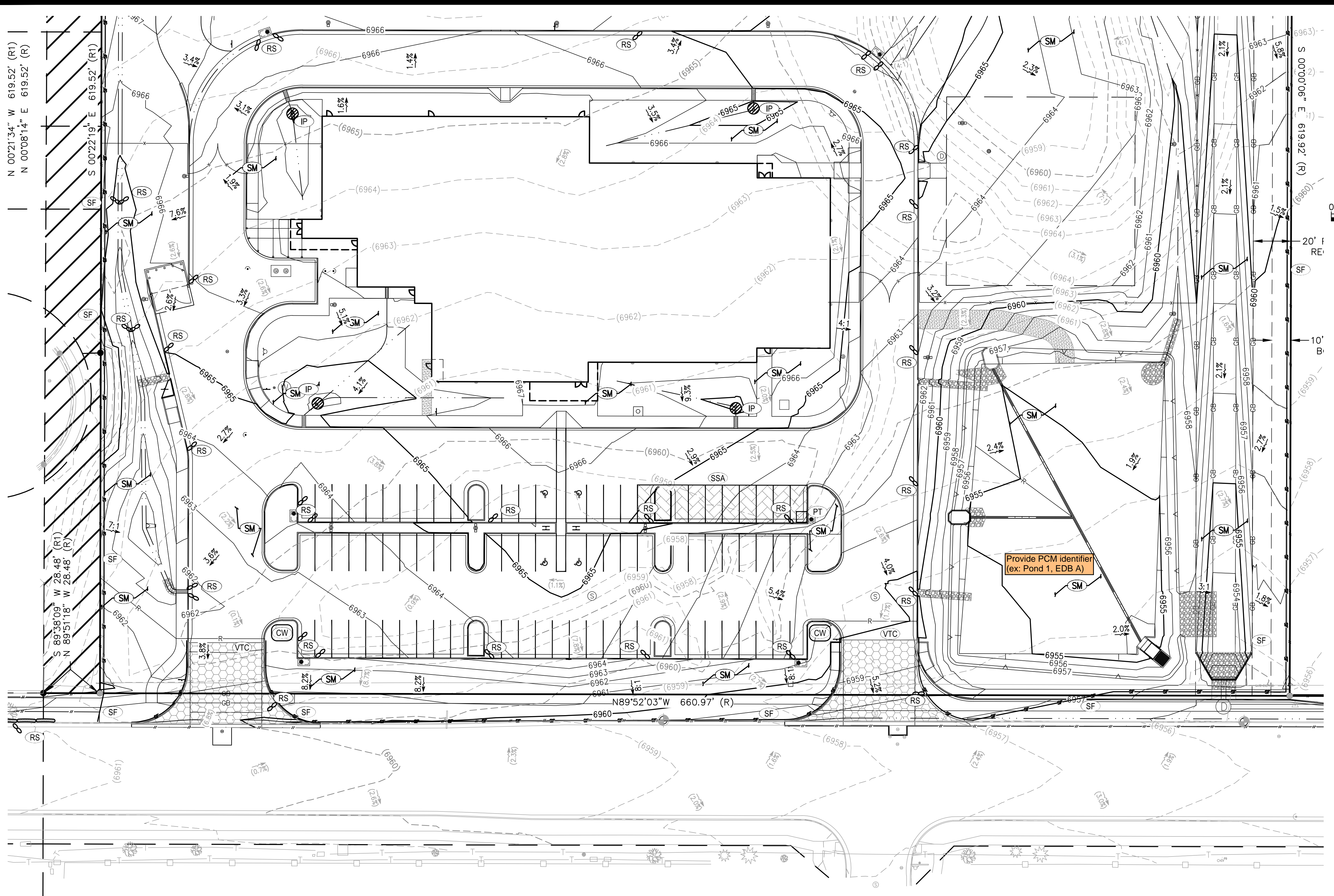
BRIAN CAMPBELL
COLORADO P.E. #40196

G-7
OF
48

2/6/2024 Internal Review #1

FOR REVIEW ONLY - NOT FOR CONSTRUCTION

Apr 30, 2026 - 5:22pm by cmlerson X:\ENGINEERING\CO\CO15170 - Honor Charter School - Payson, CO\ENR\Construction Drawings\CO15170.dwg



SYMBOLS LEGEND

---	PROPERTY LINE
---	ADJACENT PROPERTY/ ROW LINE
---	BUILDING SETBACK LINE
---	PROPOSED EASEMENT
---	LIMIT OF DISTURBANCE
W	EXISTING WATER LINE
SS	EXISTING SEWER LINE
T	PROPOSED TELEPHONE SERVICE LINE
E	PROPOSED ELECTRIC SERVICE LINE
W	PROPOSED WATER SERVICE LINE
SS	PROPOSED SS SERVICE LINE
SD	PROPOSED STORM DRAIN
R	PROPOSED RIDGELINE
GB	PROPOSED GRADE BREAK
---	PROPOSED TOP OF POND
---	PROPOSED BOTTOM OF POND
---	GRADING DETAIL BOUNDARY
○	PROPOSED SS CLEANOUT
○	PROPOSED BACKFLOW PREVENTOR
○	EXISTING FIRE HYDRANT
○	PROPOSED FIRE HYDRANT
○	PROPOSED STREET LIGHT
(40.00)ES	EXISTING ELEVATION
40.00FS	PROPOSED ELEVATION
(2940)	EXISTING CONTOUR
2940	PROPOSED CONTOUR
5.2%	EXISTING SLOPE
5.4%	PROPOSED SLOPE
□	EXISTING INLET
□	PROPOSED INLET
□	PROPOSED STORM INFRASTRUCTURE
□	PROPOSED STORM MANHOLE
□	PROPOSED TEE / THRUST BLOCK
□	PROPOSED FLARED-END SECTION
○	EXISTING SANITARY SEWER MANHOLE

EROSION CONTROL LEGEND

TITLE	KEY	SYMBOL	PHASE
CONCRETE WASHOUT	CW	○	INITIAL
PORTABLE TOILET	PT	□	INITIAL
VEHICLE TRACKING CONTROL	VTC	⊞	INITIAL
STABILIZED STAGING AREA	SSA	⊞	INITIAL
SILT FENCE	SF	—	INITIAL
RIPRAP	RR	▨	INITIAL
EROSION CONTROL BLANKET	ECB	▨	INITIAL
EROSION LOG	EL	—	INITIAL
DIVERSION DITCH	DD	—	INITIAL
SEDIMENT BASIN	SB	□	INITIAL
DRAIN INLET PROTECTION	IP	○	INTERIM
ROCK/CURB SOCK	RS	○	INTERIM
SEEDING AND MULCHING	SM	SM	FINAL

FINAL EROSION CONTROL PLAN SOUTH

UNAUTHORIZED CHANGES & USES

THE ENGINEER PREPARING THESE PLANS WILL NOT BE RESPONSIBLE FOR, OR LIABLE FOR, UNAUTHORIZED CHANGES TO OR USES OF THESE PLANS. ALL CHANGES OF THESE PLANS MUST BE IN WRITING AND MUST BE APPROVED BY THE PREPARER OF THESE PLANS PRIOR TO CONSTRUCTION. CONSTRUCTION CONTRACTOR AGREES THAT IN ACCORDANCE WITH GENERALLY ACCEPTED CONSTRUCTION PRACTICES, CONSTRUCTION CONTRACTOR WILL BE REQUIRED TO ASSUME SOLE AND COMPLETE RESPONSIBILITY FOR JOB SITE CONDITIONS DURING THE COURSE OF CONSTRUCTION OF THE PROJECT, INCLUDING SAFETY OF ALL PERSONS AND PROPERTY, THAT THIS REQUIREMENT SHALL BE MADE TO APPLY CONTINUOUSLY AND NOT BE LIMITED TO NORMAL WORKING HOURS, AND CONSTRUCTION CONTRACTOR FURTHER AGREES TO DEFEND, INDEMNIFY AND HOLD DESIGN PROFESSIONAL HARMLESS FROM ANY AND ALL LIABILITY, REAL OR ALLEGED, IN CONNECTION WITH THE PERFORMANCE OF WORK ON THIS PROJECT, EXCEPTING LIABILITY ARISING FROM THE SOLE NEGLIGENCE OF DESIGN PROFESSIONAL.

NOTE TO CONTRACTOR

THE EXISTENCE AND LOCATION OF ANY UNDERGROUND UTILITIES, PIPES, AND/OR STRUCTURES SHOWN ON THESE PLANS WERE OBTAINED BY A SEARCH OF AVAILABLE RECORDS. THERE MAY BE EXISTING UTILITIES NOT SHOWN ON THESE PLANS. THE CONTRACTOR SHALL ASCERTAIN THE TRUE VERTICAL AND HORIZONTAL LOCATION OF THOSE UNDERGROUND UTILITIES TO BE USED PRIOR TO CONSTRUCTION AND SHALL BE RESPONSIBLE FOR ANY DAMAGE TO ANY PUBLIC OR PRIVATE UTILITIES, SHOWN OR NOT SHOWN HEREON.

BASIS OF BEARINGS:
BEARINGS ARE BASED ON THE WESTERLY BOUNDARY OF THE SUBJECT PARCEL COINCIDENT WITH THE EASTERLY BOUNDARY OF THE BENT GRASS RESIDENTIAL FILING NO.2, MONUMENTED ON THE NORTH END WITH A NO.5 REBAR & 1-3/8" RED PLASTIC CAP MARKED "ALC PLS 38087", FOUND FLUSH WITH GRADE, AND ON THE SOUTH END WITH A NO. 4 REBAR & 1" ORANGE PLASTIC CAP MARKED "PLS 38141", RECOVERED 0.6 BELOW GRADE, AND IS ASSUMED TO BEAR N 00°08'14" E A MEASURED DISTANCE OF 619.52 FEET.

BENCHMARK:
ELEVATIONS ARE BASED ON THE PROJECT BENCHMARK IDENTIFIED AS JK0239 ELEVATION=6902.3'(NAVD88), PER DATA PUBLISHED BY THE NATIONAL GEODETIC SURVEY.

**FOR REVIEW ONLY
NOT FOR CONSTRUCTION**



TAIT & ASSOCIATES
320 North Lincoln Avenue
Loveland, CO 80537
p: 970.613.1447
www.tait.com
ENGINEERING ENVIRONMENTAL BUILDING LAND
SANTA FE COLORADO DENVER
SINCE 1964

FINAL EROSION CONTROL PLAN SOUTH
HONOR CHARTER SCHOOL
HIGHMARK SCHOOL DEVELOPMENT
8250 BENT GRASS MEADOWS DR.

DRAWING: CW
DATE: 11/11/2024
CHECKED:
DATE:
REVISION #:
DATE:
JOB NO.: CO1517

G-8
OF
48

BRIAN CAMPBELL
COLORADO P.E. #40196

2/6/2024 Internal Review #1

FOR REVIEW ONLY - NOT FOR CONSTRUCTION

Apr 30, 2026 - 5:23pm by cwikerson, X:\ENGINEERING\CO\CO\1517\Drawings\1517-IP-1.dwg

EROSION CONTROL BLANKET

INSTALLATION NOTES

- 100% NATURAL AND BIODEGRADABLE MATERIALS ARE REQUIRED FOR EROSION CONTROL BLANKETS. TRM PRODUCTS MAY BE USED WHERE APPROPRIATE AS DESIGNATED BY THE ENGINEER.
- IN AREAS WHERE EROSION CONTROL BLANKETS ARE SHOWN ON THE PLANS, THE PERMITEE SHALL PLACE TOPSOIL AND PERFORM FINAL GRADING, SURFACE PREPARATION, AND SEEDING AND MULCHING. SUBGRADE SHALL BE SMOOTH AND MOST PRIOR TO EROSION CONTROL BLANKET INSTALLATION, AND THE EROSION CONTROL BLANKET SHALL BE IN FULL CONTACT WITH THE SUBGRADE. NO GAPS OR VOIDS SHALL EXIST UNDER THE BLANKET.
- PERIMETER ANCHOR TRENCH SHALL BE USED ALONG THE OUTSIDE PERIMETER OF ALL BLANKET AREAS.
- JOINT ANCHOR TRENCH SHALL BE USED TO JOIN ROLLS OF EROSION CONTROL BLANKETS TOGETHER (LONGITUDINALLY AND TRANSVERSELY) FOR ALL EROSION CONTROL BLANKETS.
- INTERMEDIATE CHECK SLOT OR STAPLE CHECK SHALL BE INSTALLED EVERY 15' DOWN SLOPES. IN DRAINAGEWAYS, INSTALL CHECK SLOTS EVERY 25' PERPENDICULAR TO FLOW DIRECTION.
- OVERLAPPING JOINT DETAIL SHALL BE USED TO JOIN ROLLS OF EROSION CONTROL BLANKETS TOGETHER FOR EROSION CONTROL BLANKETS ON SLOPES.
- MATERIAL SPECIFICATIONS OF EROSION CONTROL BLANKETS SHALL CONFORM TO TABLE ECB-1.
- ANY AREAS OF SEEDING AND MULCHING DISTURBED IN THE PROCESS OF INSTALLING EROSION CONTROL BLANKETS SHALL BE RESEEDED AND MULCHED.
- STRAW EROSION CONTROL BLANKETS SHALL NOT BE USED WITHIN STREAMS AND DRAINAGE CHANNELS.
- COMPACT ALL TRENCHES.

MAINTENANCE NOTES

- FREQUENT OBSERVATIONS AND MAINTENANCE ARE NECESSARY TO MAINTAIN CONTROL MEASURES IN EFFECTIVE OPERATING CONDITION. INSPECTIONS AND CORRECTIVE MEASURES SHOULD BE DOCUMENTED THOROUGHLY.
- EROSION CONTROL BLANKETS SHALL BE LEFT IN PLACE TO EVENTUALLY BIODEGRADE. TRM MUST BE REMOVED AT THE DISCRETION OF THE GEC INSPECTOR.
- ANY EROSION CONTROL BLANKET PULLED OUT, TORN, OR OTHERWISE DAMAGED SHALL BE REPAIRED OR REINSTALLED. ANY SUBGRADE AREAS BELOW GEOTECH THAT HAVE ERODED TO CREATE A VOID UNDER THE BLANKET, OR THAT REMAIN DEVOID OF GRASS SHALL BE REPAIRED, RESEEDED AND MULCHED AND THE EROSION CONTROL BLANKET REINSTALLED.

TYPE	COCONUT CONTENT	STRAW CONTENT	EXCELSIOR CONTENT	RECOMMENDED NETTING
STRAW	-	100%	-	DOUBLE/NATURAL
STRAW-COCONUT	30% MIN.	70% MAX.	-	DOUBLE/NATURAL
COCONUT	100%	-	-	DOUBLE/NATURAL
EXCELSIOR	-	-	100%	DOUBLE/NATURAL

EROSION CONTROL BLANKET

ISSUED: 10/7/19 REVISED: 8/19/2020 DRAWING NO. 900-ECB-1

CURB INLET PROTECTION PLAN

SECTION A-A'

CURB ROCK SOCKS UPSTREAM OF INLET PROTECTION

INSTALLATION NOTES

- SEE ROCK SOCK DETAIL FOR INSTALLATION REQUIREMENTS.
- PLACEMENT OF THE ROCK SOCK SHALL BE APPROXIMATELY 40 DEGREES FROM THE CURB.
- ROCK SOCKS ARE TO BE FLUSH WITH THE CURB AND SPACED A MINIMUM OF 5' APART.
- AT LEAST TWO CURB ROCK SOCKS IN SERIES ARE REQUIRED UPSTREAM OF ON-GRADIENT INLETS.
- ADDITIONAL ROCK SOCKS MAY BE REQUIRED AT GEC INSPECTOR'S DISCRETION.

MAINTENANCE NOTES

- FREQUENT OBSERVATIONS AND MAINTENANCE ARE NECESSARY TO MAINTAIN CONTROL MEASURES IN EFFECTIVE OPERATING CONDITION. INSPECTIONS AND CORRECTIVE MEASURES SHOULD BE DOCUMENTED THOROUGHLY.
- ACCUMULATED SEDIMENT MUST BE REMOVED WHEN THE HEIGHT REACHES 1/2 OF THE DESIGN DEPTH OF THE INLET BARRIER.
- ROCK SOCKS MUST REMAIN UNTIL THE UPSTREAM DISTURBANCE AREA IS STABILIZED.
- PERMANENTLY STABILIZE AREA BEHIND INLET AFTER ROCK SOCKS ARE REMOVED WHEN REMOVAL IS APPROPRIATE.

ON-GRADE INLET PROTECTION

ISSUED: 10/7/19 REVISED: 8/19/2020 DRAWING NO. 900-IP-1

ROCK SOCK SUMP INLET PROTECTION PLAN

SECTION A-A'

INSTALLATION NOTES

- SEE ROCK SOCK DETAIL FOR INSTALLATION REQUIREMENTS.
- SEDIMENT CONTROL LOGS MAY BE USED IN PLACE OF ROCK SOCKS IN PVIOUS AREAS. INSTALL PER SEDIMENT CONTROL LOG DETAIL. CONTROL MEASURES MUST BE WRAPPED AROUND INLET AS TIGHTLY AS POSSIBLE.

MAINTENANCE NOTES

- FREQUENT OBSERVATIONS AND MAINTENANCE ARE NECESSARY TO MAINTAIN CONTROL MEASURES IN EFFECTIVE OPERATING CONDITION. INSPECTIONS AND CORRECTIVE MEASURES SHOULD BE DOCUMENTED THOROUGHLY.
- ACCUMULATED SEDIMENT MUST BE REMOVED WHEN THE HEIGHT REACHES 1/2 OF THE DESIGN DEPTH OF THE INLET BARRIER.
- ROCK SOCKS MUST REMAIN UNTIL THE UPSTREAM DISTURBANCE AREA IS STABILIZED.
- PERMANENTLY STABILIZE AREA AROUND INLET AFTER ROCK SOCKS ARE REMOVED WHEN REMOVAL IS APPROPRIATE.

SUMP INLET PROTECTION

ISSUED: 10/7/19 REVISED: 8/19/2020 DRAWING NO. 900-IP-2

SILT FENCE SUMP INLET PROTECTION PLAN

SECTION A-A'

INSTALLATION NOTES

- SEE SILT FENCE DETAIL FOR INSTALLATION REQUIREMENTS.
- POSTS SHALL BE PLACED AT EACH CORNER OF THE INLET AND AROUND THE EDGES AT A MAXIMUM SPACING OF THREE FEET.
- SILT FENCE FABRIC SHOULD HAVE A FLOW RATE IN EXCESS OF 30 GALLONS PER MINUTE PER SQUARE YARD SO AS TO ALLOW SOME WATER FLOW AND NOT DAM THE WATER. STANDARD, LOW-FLOW SILT FENCE FABRIC WILL NOT BE ALLOWED.

MAINTENANCE NOTES

- FREQUENT OBSERVATIONS AND MAINTENANCE ARE NECESSARY TO MAINTAIN CONTROL MEASURES IN EFFECTIVE OPERATING CONDITION. INSPECTIONS AND CORRECTIVE MEASURES SHOULD BE DOCUMENTED THOROUGHLY.
- ACCUMULATED SEDIMENT MUST BE REMOVED WHEN THE HEIGHT REACHES 1/2 OF THE DESIGN DEPTH OF THE INLET BARRIER.
- SILT FENCE MUST REMAIN UNTIL THE UPSTREAM DISTURBANCE AREA IS STABILIZED.
- PERMANENTLY STABILIZE AREA AROUND INLET AFTER SILT FENCE IS REMOVED WHEN REMOVAL IS APPROPRIATE.

SUMP INLET PROTECTION

ISSUED: 10/7/19 REVISED: 8/19/2020 DRAWING NO. 900-IP-3

STRAW BALE SUMP INLET PROTECTION PLAN

SECTION A-A'

INSTALLATION NOTES

- BALES SHALL BE PLACED IN A SINGLE ROW AROUND THE INLET WITH THE ENDS OF THE BALES TIGHTLY ABUTTING ONE ANOTHER.
- STRAW BALES SHALL CONSIST OF CERTIFIED WEED FREE STRAW OR HAY. LOCAL JURISDICTIONS MAY REQUIRE PROOF THAT BALES ARE WEED FREE.
- STRAW BALES SHALL CONSIST OF APPROXIMATELY 5 CUBIC FEET OF STRAW OR HAY AND WEIGH NOT LESS THAN 35 POUNDS.
- STRAW BALE DIMENSIONS SHALL BE APPROXIMATELY 36"x18"x18".
- A UNIFORM ANCHOR TRENCH SHALL BE EXCAVATED TO A DEPTH OF 4". STRAW BALES SHALL BE PAGED SO THAT THE BINDING TWINE IS ENCOMPASSING THE VERTICAL SIDES OF THE BALE(S).
- TWO (2) WOODEN STAKES SHALL BE USED TO HOLD EACH BALE IN PLACE. WOODEN STAKED SHALL BE 2"x2"x24" (MIN.) WOODEN STAKES SHALL BE DRIVEN A MINIMUM OF 6" INTO THE GROUND.

MAINTENANCE NOTES

- FREQUENT OBSERVATIONS AND MAINTENANCE ARE NECESSARY TO MAINTAIN CONTROL MEASURES IN EFFECTIVE OPERATING CONDITION. INSPECTIONS AND CORRECTIVE MEASURES SHOULD BE DOCUMENTED THOROUGHLY.
- ACCUMULATED SEDIMENT MUST BE REMOVED WHEN THE HEIGHT REACHES 1/2 OF THE DESIGN DEPTH OF THE INLET BARRIER.
- STRAW BALES MUST REMAIN UNTIL THE UPSTREAM DISTURBANCE AREA IS STABILIZED.
- PERMANENTLY STABILIZE AREA AROUND INLET AFTER STRAW BALES ARE REMOVED WHEN REMOVAL IS APPROPRIATE.
- STRAW BALES SHALL BE REPLACED IF THEY BECOME HEAVILY SOILED, ROTTEN OR DAMAGED BEYOND REPAIR.

SUMP INLET PROTECTION

ISSUED: 10/7/19 REVISED: 8/19/2020 DRAWING NO. 900-IP-4

FOR REVIEW ONLY
NOT FOR CONSTRUCTION

PREPARED UNDER THE SUPERVISION OF
TAIT & ASSOCIATES, INC.

320 North Lincoln Avenue
Loveland, CO 80537
p: 970.613.1447
www.tait.com

TAIT & ASSOCIATES
ENGINEERING ENVIRONMENTAL BUILDING LAND
Sacramento Denver
San Luis Obispo Inverness

Since 1964

REVISIONS

NO.	DESCRIPTION	BY	DATE
1			

ECP DETAILS 2

HONOR CHARTER SCHOOL
HIGHMARK SCHOOL DEVELOPMENT
8250 BENT GRASS MEADOWS DR.

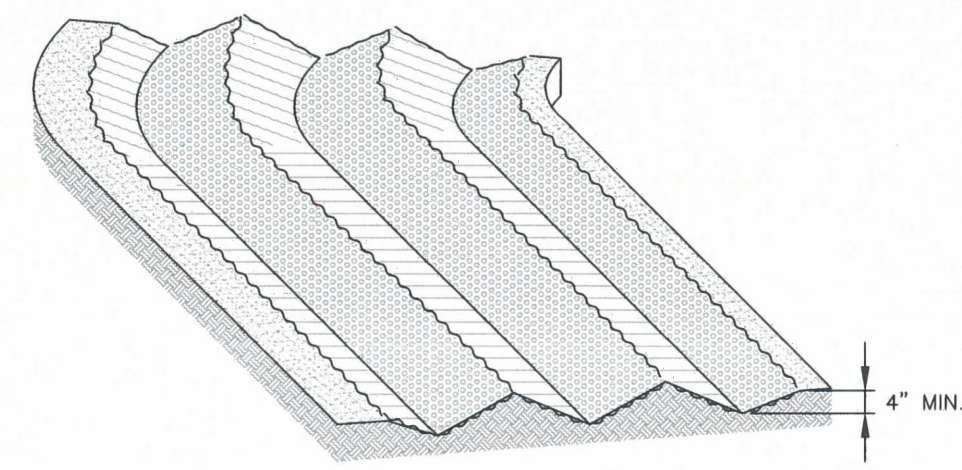
DRAWING CW
DATE: 11/11/2024
CHECKED:
DATE:
DATE:
REVISION #:
DATE:
JOB NO. CO1517

G-10
OF
48

BRIAN CAMPBELL
COLORADO P.E. #40196

2/6/2024 Internal Review #1

FOR REVIEW ONLY - NOT FOR CONSTRUCTION



SURFACE ROUGHENING

INSTALLATION NOTES

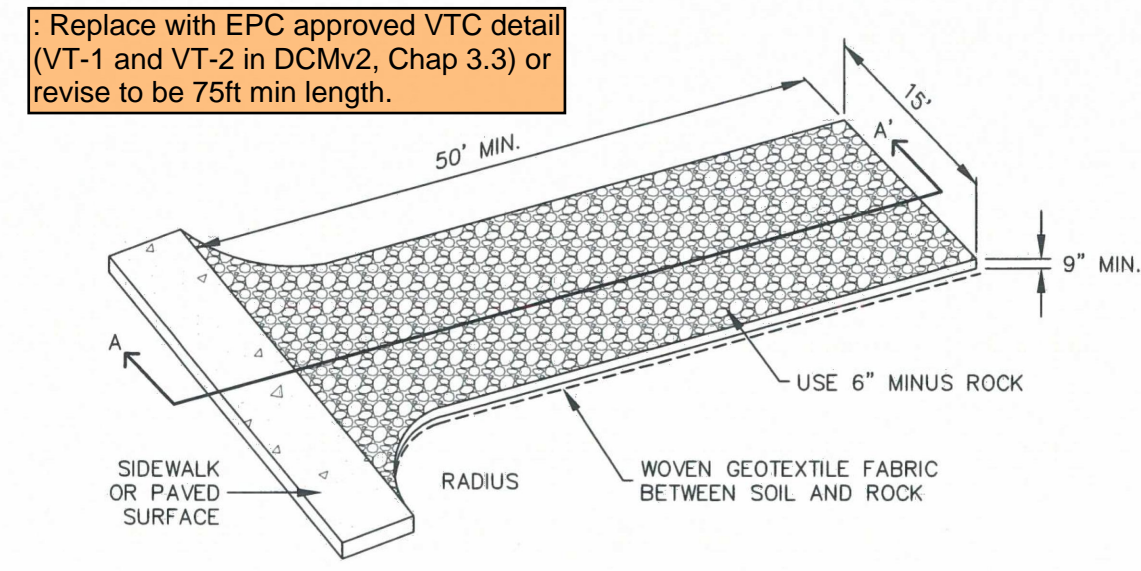
1. SURFACE ROUGHENING MAY BE USED IN AREAS FLATTER THAN 3:1. INSTALL FURROWS ALONG CONTOUR TO INTERCEPT SHEET FLOW.
2. SURFACE ROUGHENING MAY BE ACCOMPLISHED BY FURROWING, SCARIFYING, RIPPING OR DISKING THE SOIL.
3. FURROWS MUST BE A MINIMUM OF 4" IN DEPTH.
4. SURFACE ROUGHENING SHALL NOT BE USED ON EXTREMELY SANDY OR ROCKY SOILS.

MAINTENANCE NOTES

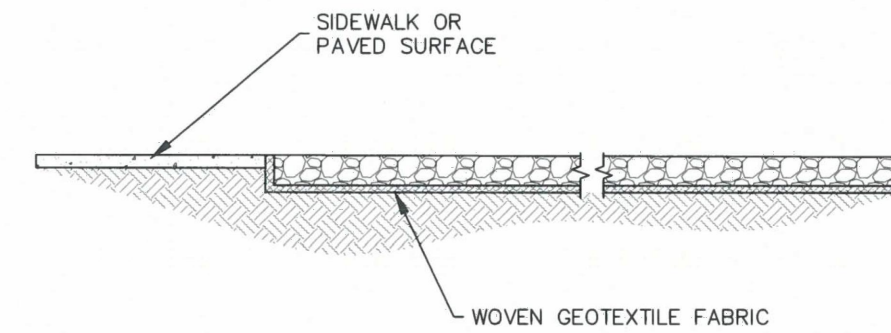
1. FREQUENT OBSERVATIONS AND MAINTENANCE ARE NECESSARY TO MAINTAIN CONTROL MEASURES IN EFFECTIVE OPERATING CONDITION. INSPECTIONS AND CORRECTIVE MEASURES SHOULD BE DOCUMENTED THOROUGHLY.
2. VEHICLES AND EQUIPMENT SHALL NOT BE DRIVEN OVER AREAS THAT HAVE BEEN SURFACE ROUGHENED.

SR

		SURFACE ROUGHENING	
APPROVED:		SHEET MANAGER:	
ISSUED:	10/7/19	REVISED:	8/19/2020
DRAWING NO. 900-SR			



AGGREGATE VEHICLE TRACKING CONTROL



SECTION A-A'

INSTALLATION NOTES

1. A STABILIZED CONSTRUCTION ENTRANCE/EXIT SHOULD BE LOCATED AT ALL POINTS WHERE VEHICLES EXIT THE CONSTRUCTION SITE TO ADJACENT ROADWAY.
2. STABILIZED CONSTRUCTION ENTRANCE/EXITS SHALL BE INSTALLED PRIOR TO ANY LAND DISTURBING ACTIVITIES.
3. RADIUS MUST BE ADEQUATE FOR INTENDED CONSTRUCTION VEHICLE TURNING.
4. ROCK SHOULD CONSIST OF 6" MINUS ROCK.
5. INSTALL CONSTRUCTION FENCE ON BOTH SIDES OF VEHICLE TRACKING CONTROL PAD WHEN NEEDED OR REQUIRED BY INSPECTOR.

MAINTENANCE NOTES

1. FREQUENT OBSERVATIONS AND MAINTENANCE ARE NECESSARY TO MAINTAIN CONTROL MEASURES IN EFFECTIVE OPERATING CONDITION. INSPECTIONS AND CORRECTIVE MEASURES SHOULD BE DOCUMENTED THOROUGHLY.
2. SEDIMENT TRACKED ONTO THE ADJACENT ROAD SHALL BE REMOVED DAILY, BY SWEEPING OR SHOVELING, AND NEVER WASHED DOWN STORM DRAINS.
3. ROUGHEN, REPLACE AND/OR ADD ROCK AS NEEDED TO MAINTAIN CONSISTENT DEPTH AND TO PREVENT SEDIMENT TRACKING ONTO ADJACENT STREET.
4. PERMANENTLY STABILIZE AREA AFTER VEHICLE TRACKING CONTROL IS REMOVED.

VTC

		VEHICLE TRACKING CONTROL	
APPROVED:		SHEET MANAGER:	
ISSUED:	10/7/19	REVISED:	8/19/2020
DRAWING NO. 900-VTC			

FOR REVIEW ONLY
NOT FOR
CONSTRUCTION

PREPARED UNDER THE SUPERVISION OF
TAIT & ASSOCIATES, INC.

DRAWING CW	DATE: 11/11/2024
CHECKED:	DATE:
REVISION #:	DATE:
JOB NO.:	CO1517

G-12
OF
48

BRIAN CAMPBELL
COLORADO P.E. #40196

ECP DETAILS 4

HONOR CHARTER SCHOOL
HIGHMARK SCHOOL DEVELOPMENT
8250 BENT GRASS MEADOWS DR.

320 North Lincoln Avenue Loveland, CO 80537 p: 970.613.1447 www.tait.com ENGINEERING ENVIRONMENTAL BUILDING LAND SURVEYING RECORDS PLANNING 3001 East Quintero Denver, Colorado 80231	
Since 1964	

NO.	DESCRIPTION	BY	DATE