

THIS IS A PRELIMINARY DESIGN. THE DESIGNER SHALL BE RESPONSIBLE FOR ANY ERRORS, OMISSIONS, OR ACCIDENTS MADE TO THE DRAWING BY ANY PARTY OTHER THAN THE DESIGN PROFESSIONAL. USE OF THIS DRAWING SHALL BE LIMITED TO THE ORIGINAL PROJECT FOR WHICH IT WAS PREPARED AND PUBLICATION THEREOF IS EXPRESSLY LIMITED TO SUCH USE. NO REPRODUCTION, IN ANY FORM OR BY ANY MEANS, IS PERMITTED WITHOUT THE WRITTEN CONSENT OF THE DESIGNER. ANY REPRODUCTION OR PUBLICATION OF THIS DRAWING WITHOUT THE WRITTEN CONSENT OF THE DESIGNER SHALL BE AT THE USER'S SOLE RISK. THE DESIGNER SHALL BE RESPONSIBLE FOR ANY ERRORS, OMISSIONS, OR ACCIDENTS MADE TO THE DRAWING BY ANY PARTY OTHER THAN THE DESIGN PROFESSIONAL. ANY REPRODUCTION OR PUBLICATION OF THIS DRAWING WITHOUT THE WRITTEN CONSENT OF THE DESIGNER SHALL BE AT THE USER'S SOLE RISK.

OWNER/CLIENT

HONOR CHARTER SCHOOL
HONOR CHARTER SCHOOL BUILDING CORPORATION
8250 Bent Grass Meadows Drive, Peyton, Colorado 80831
Owner Project No. 3225193
AGENCY NUMBER: AHCA-123456.78

REV. #	DESCRIPTION	DATE

DATE OF ISSUE: 04.30.2026
PHASE: CONSTRUCTION DOCUMENTS
ISSUED FOR: CONSTRUCTION PERMIT
GRACE PROJECT NO: 3225193

ELECTRICAL
SITE PLAN

ES-111

KEYED NOTES:

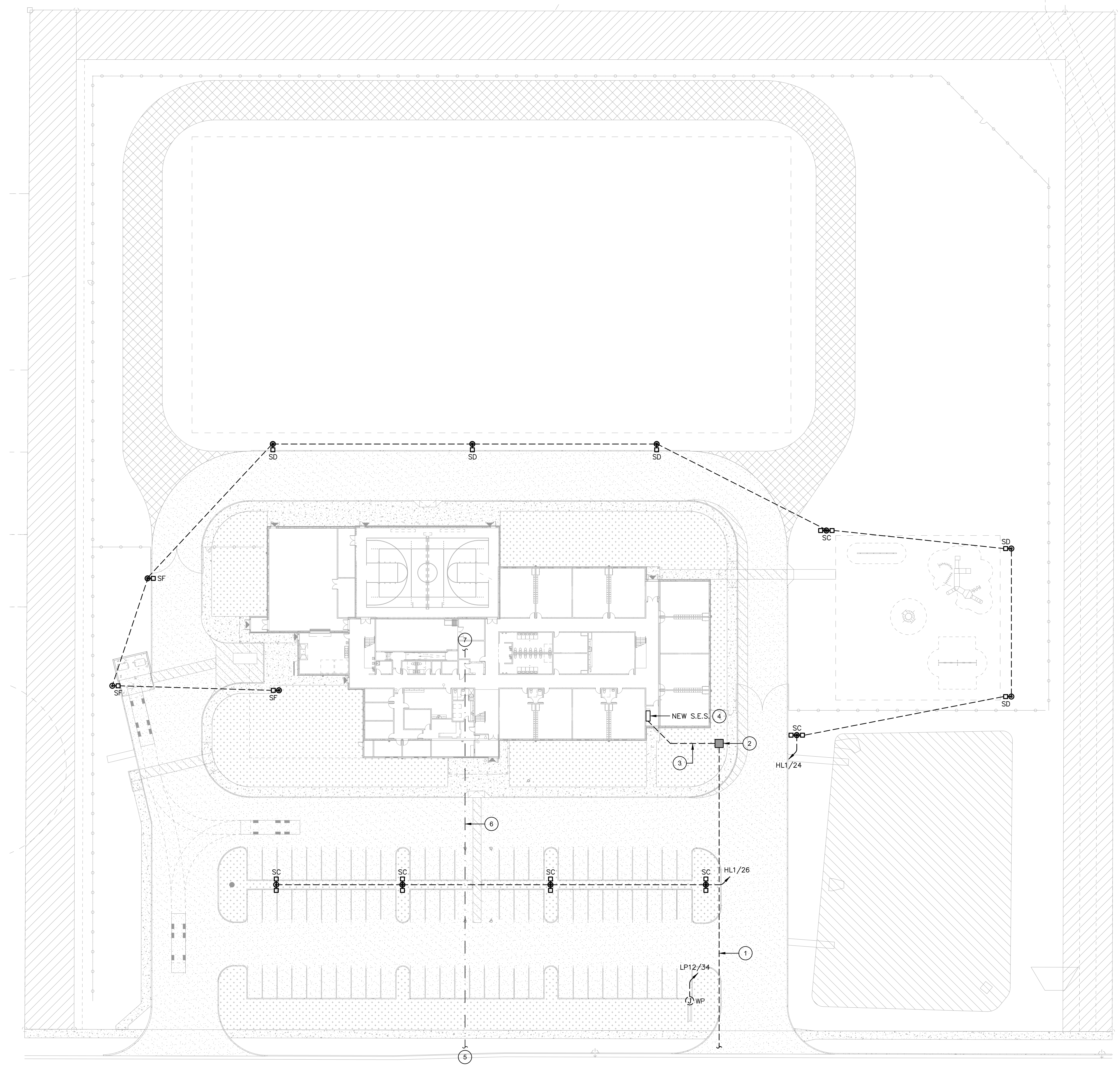
1. PRIMARY FEEDER BY MVEA.
2. NEW MVEA TRANSFORMER AND CONCRETE PAD PROVIDED AND INSTALLED BY MVEA.
3. NEW FEEDER FROM THE MVEA TRANSFORMER TO THE SES. REFER TO THE ONELINE DIAGRAM ON SHEET E-501 FOR FEEDER CONDUIT/WIRE SIZE.
4. NEW 800A, 480Y/277V, 3Ø, 4W, SES.
5. ROUTE CONDUITS TO THE TELECOM COMPANY SOURCE.
6. NEW (2) 4" C, WITH PULLSTRING, FROM THE TELECOM COMPANY SOURCE TO IT 129, PER TELECOM COMPANY SPECIFICATIONS AND REQUIREMENTS.
7. STUB-UP CONDUITS IN IT 129. COORDINATE EXACT STUB-UP LOCATION WITH THE OWNER.

NOTES:

- A. COORDINATE ALL WORK WITH OTHER TRADES, OWNER, RIGHT-OF-WAY FOR OTHER UTILITIES AND THE PROJECT MANAGER.
- B. ROUTING OF ALL TRENCHES FOR POWER AND TELECOM FEEDERS ARE SHOWN FOR ESTIMATING PURPOSES ONLY. ACTUAL ROUTING AND LOCATION, AS WELL AS DEPTH OF ALL TRENCHING SHALL BE AS COORDINATED WITH OTHER UTILITIES BY THE CONTRACTOR.
- C. CONTRACTOR SHALL PROVIDE AND INSTALL MANHOLES/PULLBOXES/HANDHOLES, AS REQUIRED, TO FACILITATE INSTALLATION OF POWER AND TELECOM FEEDERS.
- D. ALL CONDUITS SHOWN ON THIS PLAN SHALL BE RUN UNDERGROUND AT A MINIMUM OF 24" BELOW GRADE, UNLESS REQUIRED OTHERWISE BY THE UTILITY COMPANY.
- E. PROVIDE A MINIMUM OF 24" SEPARATION BETWEEN POWER AND TELECOM CONDUITS.
- F. ALL UNDERGROUND CONDUITS SHALL BE PVC SCHEDULE 40, UNLESS REQUIRED OTHERWISE BY THE UTILITY COMPANY.
- G. ALL UNDERGROUND BENDS AND ALL RISERS SHALL BE TAPED RGS OR PVC COATED RIGID CONDUIT, UNLESS REQUIRED OTHERWISE BY THE UTILITY COMPANY.
- H. ALL EXTERIOR ABOVE GROUND CONDUIT SHALL BE RGS.
- I. MINIMUM CONDUIT SIZE SHALL BE 1".
- J. MINIMUM WIRE SIZE SHALL BE #8 THHN/THWN-2 CU.
- K. REFER TO THE PANEL SCHEDULES FOR CONDUIT/WIRE SIZE AND LOAD DESIGNATIONS. THERE SHALL BE NO SHARED NEUTRALS.
- L. POLE MOUNTED LIGHT FIXTURES SHALL BE CONTROLLED AS FOLLOWS - PHOTOCELL ON, ASTRONOMIC TIME CLOCK OFF.
- M. REFER TO SHEET E-801 FOR THE LUMINAIRE SCHEDULE.

identify hours, height, cut off etc see Land Development Code, section 6.2.3

(B)Design Standards and Requirements. (1)Limitations on Extent of Lighted Area. (a)Concealed or Shielded. Light fixtures shall be arranged and positioned such that the light sources are concealed and fully shielded so that no direct light or reflection creates a nuisance or hazard to any adjacent ownership or right-of-way and that up-light, spill-light, glare, and unnecessary diffusion are minimized. Light fixtures, except as otherwise permitted herein, are required to be full cutoff as defined by the Illuminating Engineers Society of North America (IESNA). The cut-off angle of an exterior light source shall not exceed 90 degrees. Full cut-off fixtures may not be tilted or aimed in a manner that results in light distribution above the horizontal plane. The use of semi-cutoff or cutoff (as opposed to full cutoff) fixtures shall be permitted to illuminate areas other than parking lots provided the pole or mounting point is no more than 10' in height and the maximum lumen output does not exceed 1800 lumens per lamp. (b)Non-Security Lighting During Non-Operating Hours. Exterior lighting, including but not limited to floodlights used to light a building facade, shall be reduced, activated by motion sensor devices, or turned off during the principal use's non-operating hours. Lighting necessary for security shall not be subject to this provision. (c)Upward Lighting. Upward lighting for architectural, landscape or decorative purposes shall have at least 90% of the total distribution pattern within the profile of the illuminated structure or feature. Light fixtures used to illuminate flags, statues, or any other objects mounted on a pole, pedestal, or platform, shall use a narrow cone of light that does not extend beyond the illuminated object. (d)Maximum Levels. Maximum on-site lighting levels shall not exceed 10 foot candles, except for loading and unloading platforms where the maximum lighting level shall be 20 foot candles. (e)Measurement at Property Boundaries. Light levels measured at the property line of the development site adjacent to residential property or public right of way shall not exceed 0.1 foot candles as a direct result of the on-site lighting. All light fixtures mounted within 15' of any residential property line of the site shall be classified as IES Type II or Type III, or fixture demonstrated to provide similar distribution patterns and shielding properties. Fixtures shall be fitted with "house side shield" reflectors on the sides facing the residential property line. (f)Light Standards and Fixtures. The style of light standards and fixtures shall be consistent with the style and character of architecture proposed on the site. Poles shall be anodized or coated to minimize glare from the light source. Bollards or similar light fixtures intended to illuminate landscape features or walkways are permitted which do not exceed 4 feet in height, 2 fixtures per bollard and 1 lamp not exceeding 900 lumens per fixture. (g)Lamp Types. All outdoor light fixtures should utilize 1 of the following lamp types: metal halide, induction lamp, compact fluorescent, incandescent (including tungsten-halogen), or high-pressure sodium. Alternatives are permitted provided they are demonstrated to be more effective for the proposed use based on IESNA recommendations. (h)Canopy Lighting. Light fixtures associated with canopies, including but not limited to fuel islands, seasonal outdoor sales areas, shopping malls, theaters, bank drive-thrus, and hotels shall be full cutoff or mounted so that the bottom of the lens is recessed or flush with the bottom surface of the canopy. All light emitted from the canopy shall be substantially confined to the ground directly beneath the perimeter of the canopy. No lighting of any kind, except as permitted by sign regulations, shall be allowed on the top or sides of a canopy. The design of the canopy in terms of height above grade, and the spacing between the fixtures within the canopy, shall be such that the illuminance level under the canopy does not exceed 20 foot-candles. (i)Consideration of Pilots. No lighting shall make it difficult for pilots to distinguish airport lights from others, result in glare in the eyes of the pilots using an aviation facility, impair visibility in the vicinity of an aviation facility or, in any way create a hazard or endanger the landing, take-off, or maneuvering of aircrafts intending to use an aviation facility. (2)Height. No freestanding light fixtures shall be mounted higher than 15 feet, except parking lot light fixtures which shall be mounted no higher than 20 feet unless an alternative lighting proposal is approved in accordance with this Code. (3)Requirements for Outdoor Recreation Facilities. Ball diamonds, playing fields, tennis courts, and other outdoor recreational uses shall be required to meet the following standards: (a)Maximum Pole Height. The maximum light pole height shall be 80 feet. (b)Cut-Off Angle. The cut-off angle from a lighting source that illuminates an outdoor recreational use may exceed 90 degrees provided the light source is shielded to prevent light and glare from spilling to adjacent residential properties. (c)Hours of Use. Exterior lighting for an outdoor recreational use shall be extinguished no later than 10:00 p.m. or immediately after the conclusion of the final event of the day, whichever is later.



ELECTRICAL SITE PLAN
1" = 30'-0"
NORTH



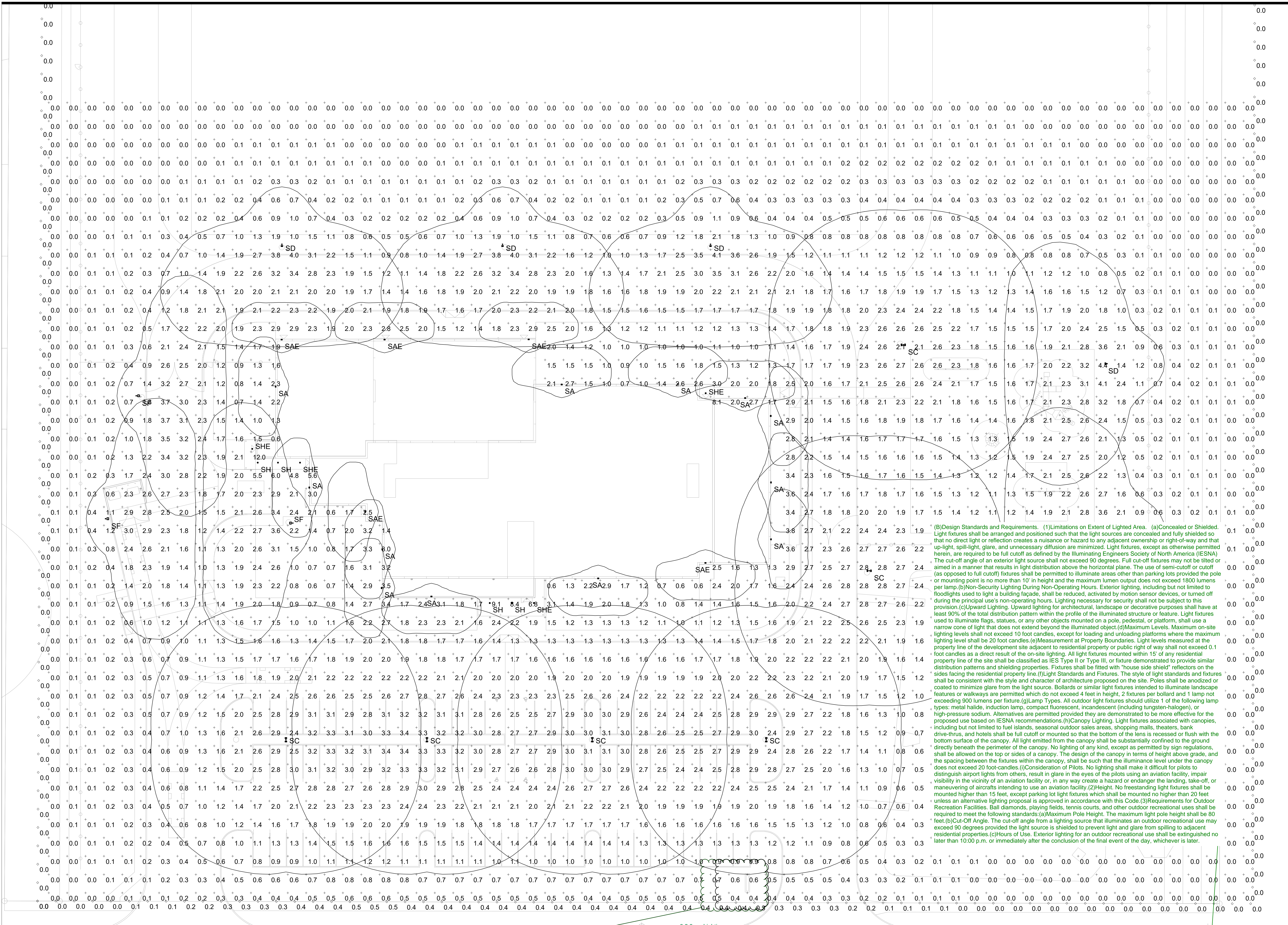
OWNER/CIENT

HONOR CHARTER SCHOOL
HONOR CHARTER SCHOOL BUILDING CORPORATION
8250 Bent Grass Meadows Drive, Peyton, Colorado 80831
Owner: Project No. 3225193
AGENCY NUMBER: AHC-123456.78

REV. #	DESCRIPTION	DATE

DATE OF ISSUE: 04.30.2026
PHASE: CONSTRUCTION DOCUMENTS
ISSUED FOR: CONSTRUCTION PERMIT
GRACE PROJECT NO: 3225193

SITE PHOTOMETRIC PLAN

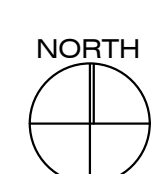


(B) Design Standards and Requirements. (1) Limitations on Extent of Lighted Area. (a) Concealed or shielded. Light fixtures shall be arranged and positioned such that the light sources are concealed and fully shielded so that no direct light or reflection creates a nuisance or hazard to any adjacent ownership or right-of-way and that up-light, spill-light, glare, and unnecessary diffusion are minimized. Light fixtures, except as otherwise permitted herein, are required to be full cutoff as defined by the Illuminating Engineers Society of North America (IESNA). The cut-off angle of an exterior light source shall not exceed 90 degrees. Full cut-off fixtures may not be tilted or aimed in a manner that results in light distribution above the horizontal plane. The use of semi-cutoff or cutoff (as opposed to full cutoff) fixtures shall be permitted to illuminate areas other than parking lots provided the pole or mounting point is no more than 10' in height and the maximum lumen output does not exceed 1800 lumens per lamp. (b) Non-Security Lighting during Non-Operating Hours. Exterior lighting, including but not limited to floodlights used to light a building facade, shall be reduced, activated by motion sensor devices, or turned off during the principal user's non-operating hours. Lighting necessary for security shall not be subject to this provision. (c) Upward Lighting. Upward lighting for architectural, landscape or decorative purposes shall have at least 90% of the total distribution pattern within the profile of the illuminated structure or feature. Light fixtures used to illuminate flags, statues, or any other objects mounted on a pole, pedestal, or platform, shall use a narrow cone of light that does not extend beyond the illuminated object. (d) Maximum Levels. Maximum on-site lighting levels shall not exceed 10 foot candles, except for loading and unloading platforms where the maximum lighting level shall be 20 foot candles. (e) Measurement at Property Boundaries. Light levels measured at the property line of the development site adjacent to residential property or public right of way shall not exceed 0.1 foot candles as a direct result of the on-site lighting. All light fixtures mounted within 15' of any residential property line of the site shall be classified as IES Type II or Type III, or fixture demonstrated to provide similar distribution patterns and shielding properties. Fixtures shall be fitted with "house side shield" reflectors on the sides facing the residential property line. (f) Light Standards and Fixtures. The style of light standards and fixtures shall be consistent with the style and character of architecture proposed on the site. Poles shall be anodized or coated to minimize glare from the light source. Bollards or similar light fixtures intended to illuminate landscape features or walkways are permitted which do not exceed 4 feet in height. 2 fixtures per bollard and 1 lamp not exceeding 900 lumens per fixture. (g) Lamp Types. All outdoor light fixtures should utilize 1 of the following lamp types: metal halide, induction lamp, compact fluorescent, incandescent (including tungsten-halogen), or high-pressure sodium. Alternatives are permitted provided they are demonstrated to be more effective for the proposed use based on IESNA recommendations. (h) Canopy Lighting. Light fixtures associated with canopies, including but not limited to fuel islands, seasonal outdoor sales areas, shopping malls, theaters, banks, drive-thrus, and hotels shall be full cutoff or mounted so that the bottom of the lens is recessed or flush with the bottom surface of the canopy. All light emitted from the canopy shall be substantially confined to the ground directly beneath the perimeter of the canopy. No lighting of any kind, except as permitted by sign regulations, shall be allowed on the top or sides of a canopy. The design of the canopy in terms of height above grade, and the spacing between the fixtures within the canopy, shall be such that the illuminance level under the canopy does not exceed 20 foot-candles. (i) Consideration of Pilots. No lighting shall make it difficult for pilots to distinguish airport lights from others, result in glare in the eyes of the pilots using an aviation facility, impair visibility in the vicinity of an aviation facility or, in any way create a hazard or endanger the landing, take-off, or maneuvering of aircrafts intending to use an aviation facility. (2) Height. No freestanding light fixtures shall be mounted higher than 15 feet, except parking lot light fixtures which shall be mounted no higher than 20 feet unless an alternative lighting proposal is approved in accordance with this Code. (3) Requirements for Outdoor Recreation Facilities. Ball diamonds, playing fields, tennis courts, and other outdoor recreational uses shall be required to meet the following standards: (a) Maximum Pole Height. The maximum light pole height shall be 80 feet. (b) Cut-Off Angle. The cut-off angle from a lighting source that illuminates an outdoor recreational use may exceed 90 degrees provided the light source is shielded to prevent light and glare from spilling to adjacent residential properties. (c) Hours of Use. Exterior lighting for an outdoor recreational use shall be extinguished no later than 10:00 p.m. or immediately after the conclusion of the final event of the day, whichever is later.

6.2.3. Lighting

(A) General. (1) Purpose. The purpose of this Section is to address the physical effects of lighting, and the affect that lighting may have on the surrounding neighborhood.
(2) Applicability. This Section applies in all zoning districts, except as otherwise provided.

SITE PHOTOMETRIC PLAN
N.T.S.



Statistics					
Description	Symbol	Avg	Max	Min	Avg/Min
FC ON SITE AT GRADE	+	1.1 fc	12.0 fc	0.0 fc	N/A
PROPERTY LINE AT GRADE	◇	0.1 fc	0.5 fc	0.0 fc	N/A

Add property lines and verify full cut off fixtures and provide height of pole mounts. Please see lighting standards in Code

is this sign electric and does it change messages? provide lumens at property lines

WDGE2 LED Architectural Wall Sconce Precision Refractive Optic

Finish: SA/SAE

Depth (D1): 7"
Depth (D2): 1.5"
Height: 9"
Width: 11.5"
Weight: 13.5 lbs (without options)

Specifications
Depth (D1): 7"
Depth (D2): 1.5"
Height: 9"
Width: 11.5"
Weight: 13.5 lbs (without options)

WDGE2 LED Family Overview

Luminaire	Optic	Standard EM, FT	Cold EM, -20°C	Sensor	P1	P2	P3	P4	P5	P6
WDGE2 LED Visual Control	40°	10W	10W	Standard / r/night	1,200	2,000	3,000	4,500	6,000	—
WDGE2 LED Visual Control	10W	10W	10W	Standard / r/night	700	1,200	2,000	3,200	4,200	—
WDGE2 LED Precision Refractive	10W	10W	10W	Standard / r/night	7,500	8,500	10,000	12,000	—	—
WDGE2 LED Precision Refractive	10W	10W	10W	Standard / r/night	12,000	14,000	16,000	20,000	22,000	25,000

Ordering Information EXAMPLE: WDGE2 LED P3 40K 80CRI T3M SVOLT MRM DDBXD

Series	Package	Color Temperature	CR	Distribution	Voltage	Mounting	Shipping/Included	Shipped separately
WDGE2 LED	P1	2700K	80+	DMX	120V	347°	SDM - Surface Mounting Hardware	FRM - FRM - Surface mounted back box (see left, optional) (FRM - FRM - Surface mounted back box (see left, optional))

Options

Option	Description	Finish
DDBD	Dark Bronze	DDBD
DDND	Dark Nickel	DDND
DDSD	Dark Silver	DDSD
DDTD	Dark Titanium	DDTD
DDUD	Dark Ultra	DDUD
DDVD	Dark Violet	DDVD
DDWD	Dark White	DDWD
DDXD	Dark X	DDXD
DDYD	Dark Y	DDYD
DDZD	Dark Z	DDZD

SA/SAE

Accessories

Performance Data

Lumen Output

Lumen Ambient Temperature (LAT) Multipliers

Projected LED Lumen Maintenance

Photometric Diagrams

Emergency Egress Options

Emergency Battery Backup

RSX1 LED Area Luminaire

Finish: SC/SD/SF

Length: 21.8" (55.4 cm)
Width: 13.3" (33.8 cm)
Height: 3.0" (7.6 cm) Main Body
7.2" (18.4 cm) Arm
Weight: 22.0 lbs (10.0 kg)

Specifications
EPA (H=90°): 0.57 ft² (0.05 m²)
Length: 21.8" (55.4 cm)
Width: 13.3" (33.8 cm)
Height: 3.0" (7.6 cm) Main Body
7.2" (18.4 cm) Arm
Weight: 22.0 lbs (10.0 kg)

Ordering Information EXAMPLE: RSX1 LED P4 40K R3 MVOLT SPA DDBXD

Series	Performance Package	Color Temperature	Distribution	Voltage	Mounting
RSX1 LED	P1	2700K	DMX	120V	347°

Options

Option	Description	Finish
DDBD	Dark Bronze	DDBD
DDND	Dark Nickel	DDND
DDSD	Dark Silver	DDSD
DDTD	Dark Titanium	DDTD
DDUD	Dark Ultra	DDUD
DDVD	Dark Violet	DDVD
DDWD	Dark White	DDWD
DDXD	Dark X	DDXD
DDYD	Dark Y	DDYD
DDZD	Dark Z	DDZD

SC/SD/SF

Ordering Information

Accessories

External Shields

Pole/Mounting Information

Round Tenon Mount - Pole Top Slipfitters

Drill Side Location by Configuration Type

RSX1 - Luminaire Mounting

RSX Standard Arm & Adjustable Arm

SC/SD/SF

Photometric Diagrams

Performance Data

Lumen Ambient Temperature (LAT) Multipliers

Electrical Load

Projected LED Lumen Maintenance

V1_Lighting Plan.pdf Markup Summary

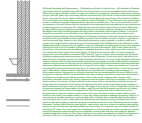
dsdparsons (9)

IES SHALL BE CONTROLLED AS FOLLOWS - PHOTOCELL
OR
A THE LUMINAIRE SCHEDULE.

Subject: Callout
Page Label: [1] 26030ES111-ELEC
Author: dsdparsons
Date: 6/9/2026 1:34:37 PM
Status:
Color: ■
Layer:
Space:

identify hours, height, cut off etc see Land
Development Code, section 6.2.3

identify hours, height,
cut off etc see Land
Development Code,
section 6.2.3



Subject: Text Box
Page Label: [1] 26030ES111-ELEC
Author: dsdparsons
Date: 6/9/2026 1:34:53 PM
Status:
Color: ■
Layer:
Space:

(B)Design Standards and Requirements.

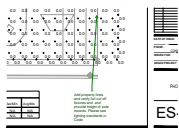
(1)Limitations on Extent of Lighted Area.

(a)Concealed or Shielded. Light fixtures shall be arranged and positioned such that the light sources are concealed and fully shielded so that no direct light or reflection creates a nuisance or hazard to any adjacent ownership or right-of-way and that up-light, spill-light, glare, and unnecessary diffusion are minimized. Light fixtures, except as otherwise permitted herein, are required to be full cutoff as defined by the Illuminating Engineers Society of North America (IESNA) The cut-off angle of an exterior light source shall not exceed 90 degrees. Full cut-off fixtures may not be tilted or aimed in a manner that results in light distribution above the horizontal plane. The use of semi-cutoff or cutoff (as opposed to full cutoff) fixtures shall be permitted to illuminate areas other than parking lots provided the pole or mounting point is no more than 10' in height and the maximum lumen output does not exceed 1800 lumens per lamp.(b)Non-Security Lighting During

Non-Operating Hours. Exterior lighting, including but not limited to floodlights used to light a building façade, shall be reduced, activated by motion sensor devices, or turned off during the principal use's non-operating hours. Lighting necessary for security shall not be subject to this

provision.(c)Upward Lighting. Upward lighting for architectural, landscape or decorative purposes shall have at least 90% of the total distribution pattern within the profile of the illuminated structure or feature. Light fixtures used to illuminate flags, statues, or any other objects mounted on a pole, pedestal, or platform, shall use a narrow cone of light that does not extend beyond the illuminated object.(d)Maximum Levels. Maximum on-site lighting levels shall not exceed 10 foot candles, except for loading and unloading platforms where the maximum lighting level shall be 20 foot candles.(e)Measurement at Property Boundaries.

Light levels measured at the property line of the development site adjacent to residential property or public right of way shall not exceed 0.1 foot candles as a direct result of the on-site lighting. All light fixtures mounted within 15' of any residential property line of the site shall be classified as IES Type II or Type III, or fixture demonstrated to provide similar distribution patterns and shielding properties. Fixtures shall be fitted with "house side shield" reflectors on the sides facing the residential property line.(f)Light Standards and Fixtures. The style of light standards and fixtures shall be consistent with the style and character of architecture proposed on the site. Poles shall be anodized or coated to minimize glare from the light source. Bollards or similar light fixtures intended to illuminate landscape features or walkways are permitted which do not exceed 4 feet in height, 2 fixtures per bollard and 1 lamp not exceeding 900 lumens per fixture.(g)Lamp Types. All outdoor light fixtures should utilize 1 of the following lamp types: metal halide, induction lamp, compact fluorescent, incandescent (including tungsten-halogen), or high-pressure sodium. Alternatives are permitted provided they are demonstrated to be more effective for the proposed use based on IESNA recommendations.(h)Canopy Lighting. Light fixtures associated with canopies, including but not limited to fuel islands, seasonal outdoor sales areas, shopping malls, theaters, bank drive-thrus,



Subject: Callout
Page Label: [1] 26030ES112-ELEC
Author: dsdparsons
Date: 6/9/2026 1:33:20 PM
Status:
Color: ■
Layer:
Space:

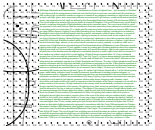
Add property lines and verify full cut off fixtures and provide height of pole mounts. Please see lighting standards in Code



Subject: Text Box
Page Label: [1] 26030ES112-ELEC
Author: dsdparsons
Date: 6/9/2026 1:32:50 PM
Status:
Color: ■
Layer:
Space:

6.2.3. Lighting

(A)General. (1)Purpose. The purpose of this Section is to address the physical effects of lighting, and the affect that lighting may have on the surrounding neighborhood.
(2)Applicability. This Section applies in all zoning districts, except as otherwise provided.



Subject: Text Box
Page Label: [1] 26030ES112-ELEC
Author: dsdparsons
Date: 6/9/2026 1:34:48 PM
Status:
Color: ■
Layer:
Space:

(B)Design Standards and Requirements.

(1)Limitations on Extent of Lighted Area.

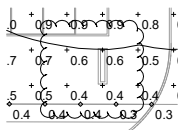
(a)Concealed or Shielded. Light fixtures shall be arranged and positioned such that the light sources are concealed and fully shielded so that no direct light or reflection creates a nuisance or hazard to any adjacent ownership or right-of-way and that up-light, spill-light, glare, and unnecessary diffusion are minimized. Light fixtures, except as otherwise permitted herein, are required to be full cutoff as defined by the Illuminating Engineers Society of North America (IESNA) The cut-off angle of an exterior light source shall not exceed 90 degrees. Full cut-off fixtures may not be tilted or aimed in a manner that results in light distribution above the horizontal plane. The use of semi-cutoff or cutoff (as opposed to full cutoff) fixtures shall be permitted to illuminate areas other than parking lots provided the pole or mounting point is no more than 10' in height and the maximum lumen output does not exceed 1800 lumens per lamp.(b)Non-Security Lighting During

Non-Operating Hours. Exterior lighting, including but not limited to floodlights used to light a building façade, shall be reduced, activated by motion sensor devices, or turned off during the principal use's non-operating hours. Lighting necessary for security shall not be subject to this

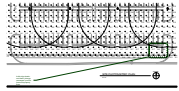
provision.(c)Upward Lighting. Upward lighting for architectural, landscape or decorative purposes shall have at least 90% of the total distribution pattern within the profile of the illuminated structure or feature. Light fixtures used to illuminate flags, statues, or any other objects mounted on a pole, pedestal, or platform, shall use a narrow cone of light that does not extend beyond the illuminated object.(d)Maximum Levels. Maximum on-site lighting levels shall not exceed 10 foot candles, except for loading and unloading platforms where the maximum lighting level shall be 20 foot candles.(e)Measurement at Property Boundaries.

Light levels measured at the property line of the development site adjacent to residential property or public right of way shall not exceed 0.1 foot candles as a direct result of the on-site lighting. All light fixtures mounted within 15' of any residential property line of the site shall be classified as IES Type II or Type III, or fixture demonstrated to provide similar distribution patterns and shielding properties. Fixtures shall be fitted with "house side shield" reflectors on the sides facing the residential property line.(f)Light Standards and Fixtures. The style of light standards and fixtures shall be consistent with the style and character of

architecture proposed on the site. Poles shall be anodized or coated to minimize glare from the light source. Bollards or similar light fixtures intended to illuminate landscape features or walkways are permitted which do not exceed 4 feet in height, 2 fixtures per bollard and 1 lamp not exceeding 900 lumens per fixture.(g)Lamp Types. All outdoor light fixtures should utilize 1 of the following lamp types: metal halide, induction lamp, compact fluorescent, incandescent (including tungsten-halogen), or high-pressure sodium. Alternatives are permitted provided they are demonstrated to be more effective for the proposed use based on IESNA recommendations.(h)Canopy Lighting. Light fixtures associated with canopies, including but not limited to fuel islands, seasonal outdoor sales areas, shopping malls, theaters, bank drive-thrus,



Subject: Cloud
Page Label: [1] 26030ES112-ELEC
Author: dsdparsons
Date: 6/9/2026 1:36:27 PM
Status:
Color: ■
Layer:
Space:



Subject: Planner
Page Label: [1] 26030ES112-ELEC
Author: dsdparsons
Date: 6/9/2026 1:37:21 PM
Status:
Color: ■
Layer:
Space:

is this sign electric and does it change messages?
 provide lumens at property lines



Subject: Highlight
Page Label: [1] 26030ES113-ELEC
Author: dsdparsons
Date: 6/9/2026 1:29:19 PM
Status:
Color: ■
Layer:
Space:



Subject: Planner
Page Label: [1] 26030ES113-ELEC
Author: dsdparsons
Date: 6/9/2026 1:29:57 PM
Status:
Color: ■
Layer:
Space:

Is this what you are proposing to reduce impacts to
 residents?