

HONOR CHARTER SCHOOL BUILDING CORPORATION HONOR CHARTER SCHOOL CONSTRUCTION DOCUMENTS

ISSUE DATE 04.30.2026



K-8, 2-story educational facility at 8250 Bent Grass Meadows Drive, Peyton, Colorado (Parcel no. 530100038). The overall square footage will be approximately 45,000 sf; providing 27 classrooms (3 per grades K-8), elective classrooms serving Art, Science, and Music, 3 small group classrooms for pull-out/support services, media center, MS regulation size Multipurpose gym/cafeteria with divider curtain, warming kitchen, offices, group and staff restrooms, nurse, conference room, lobby and staff support areas. This school design will be functional and easily maintained. The site design will allow adequate parking, onsite traffic management, and exterior play fields, with care towards storm water management.

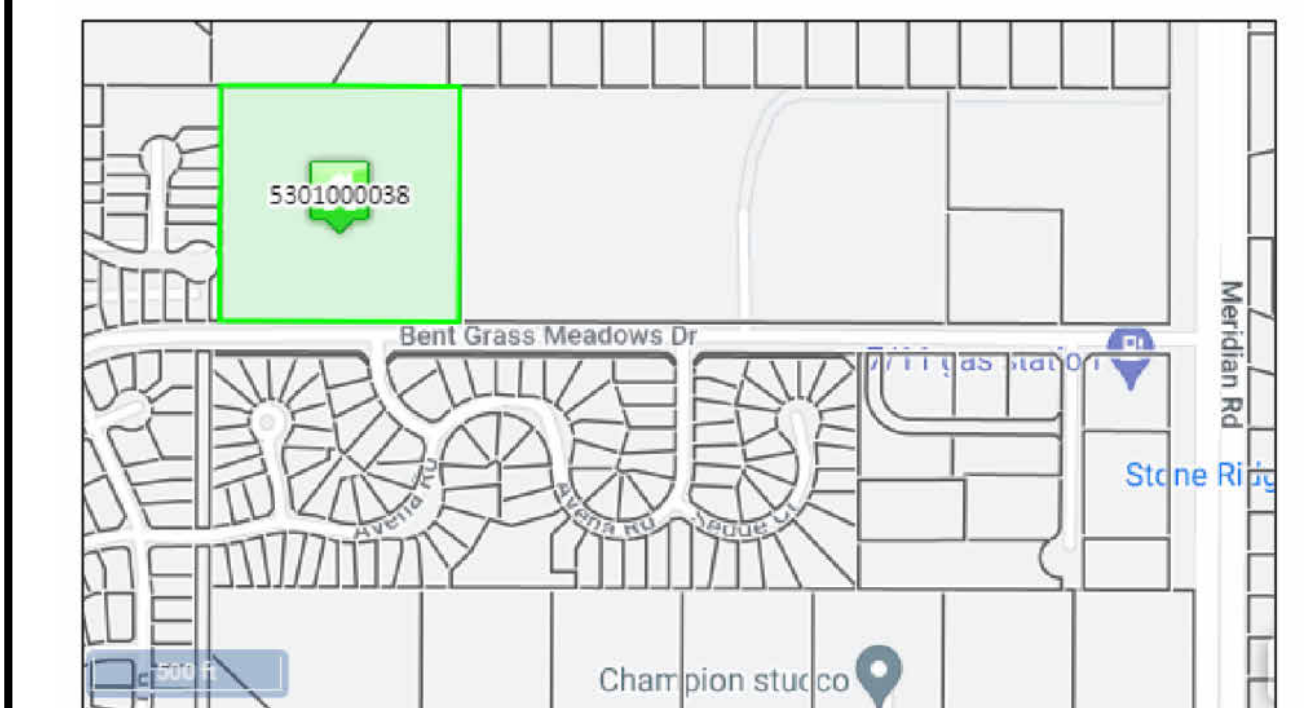
CLIENT INFORMATION

HONOR CHARTER SCHOOL BUILDING CORPORATION
12577 E Caley Avenue
Centennial, Colorado 80111
(616) 250-3566
T
tammy@highmarkschools.com
OWNER DESIGN MANAGER: Tammy Sweeris
OWNER CONSTRUCTION MANAGER: Malcom Mulrone
OWNER PROJECT NUMBER: 3225193

GRACE DESIGN STUDIO PROJECT NUMBER: 3225193

VICINITY MAP

8250 Bent Grass Meadows Drive, Peyton, Colorado/
80831



© 2026 By Grace Design Studios, PLLC

PAUL TAN CONSULTING GROUP/ ACOUSTICS & NOISE CONTROL

DESIGN TEAM
PRINCIPAL IN CHARGE: PAUL TAN
PROJECT MANAGER: PAUL TAN
7455 ARROYO CROSSING PARKWAY, SUITE 220
LAS VEGAS, NV 89113-4088
(888) 498-1219

WALTZ CONSTRUCTION

DESIGN TEAM
PRINCIPAL IN CHARGE: JAY GREEN
PROJECT MANAGER: MALCOLM MULRONEY
449 S 48TH ST.
TEMPE, AZ 85281
(480) 759-9622
WALTZCONSTRUCTION.COM

TAIT CIVIL ENGINEERS

DESIGN TEAM
PRINCIPAL IN CHARGE: BRIAN CAMPBELL
PROJECT MANAGER: NATHANIEL RAMSTETTER
320 NORTH LINCOLN AVE.
LOVELAND, CO. 80537
T: 970-613-1447
F: 970-613-1897
TAIT.COM

PK ASSOCIATES STRUCTURAL ENGINEERS

DESIGN TEAM
PRINCIPAL IN CHARGE: BOB HALLIDAY
6900 E. BELLEVIEW AVE, SUITE 200
GREENWOOD VILLAGE, CO 80111
720-799-1058
PKASTRUCTURAL.COM

ABUWANDI ENGINEERING ASSOCIATES

DESIGN TEAM
PRINCIPAL IN CHARGE: ZEID ABUWANDI
2800 N 44TH ST.
PHOENIX, AZ 85008
(602) 274-1045
ABUWANDIENG.COM

ZEE ENGINEERING GROUP

DESIGN TEAM
PRINCIPAL IN CHARGE: SHYAMUK SIDHWA
1830 S. ALMA SCHOOL RD, SUITE 120
MESA, AZ
(480) 650-7748
ZENGROUP.COM

GRACE DESIGN STUDIOS

2929 N. Central Ave
11th Floor
Phoenix, AZ 85012
602.257.1764
www.grace-design.com

REVISIONS

REV. #	DESCRIPTION	DATE
--------	-------------	------

