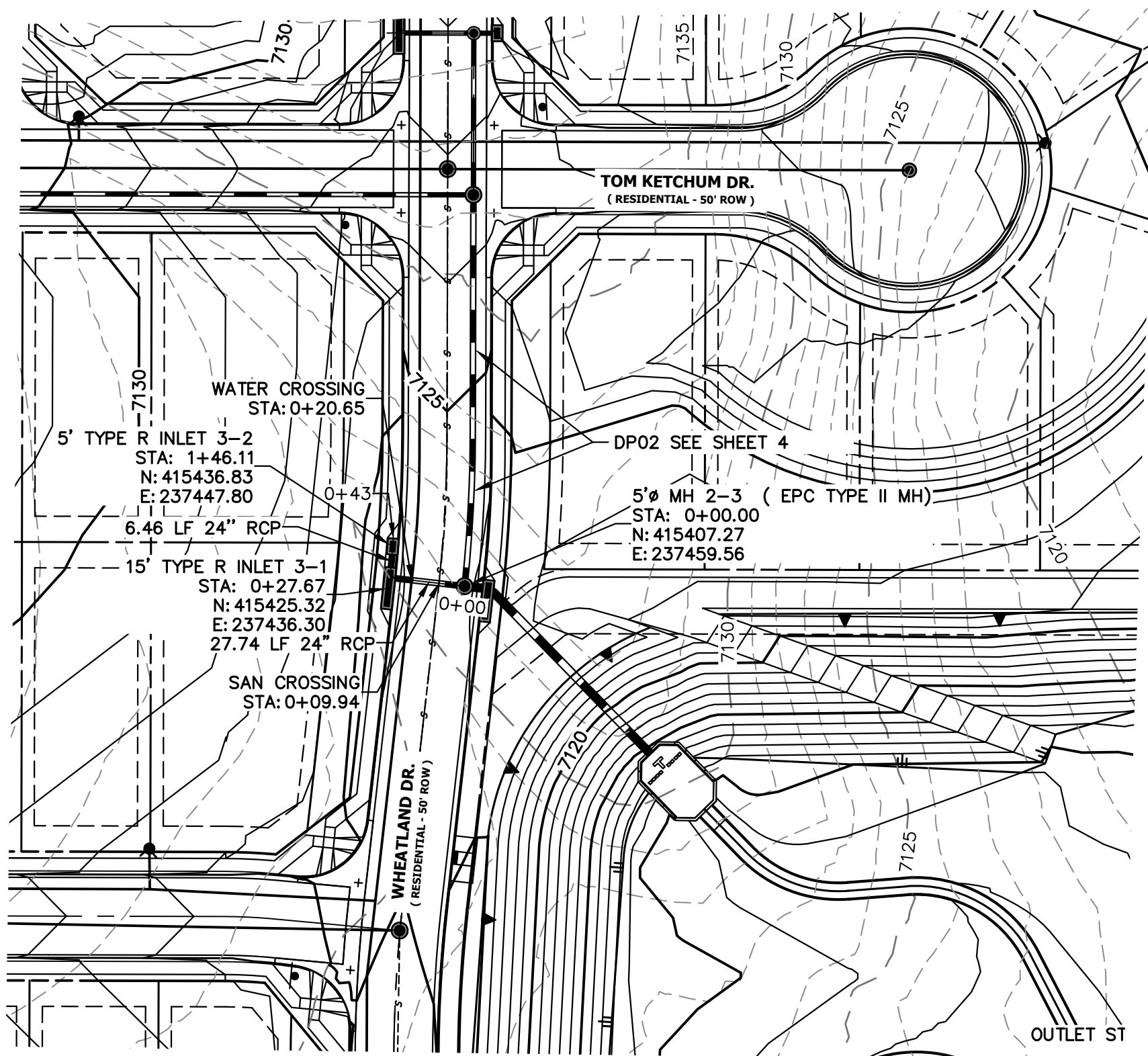
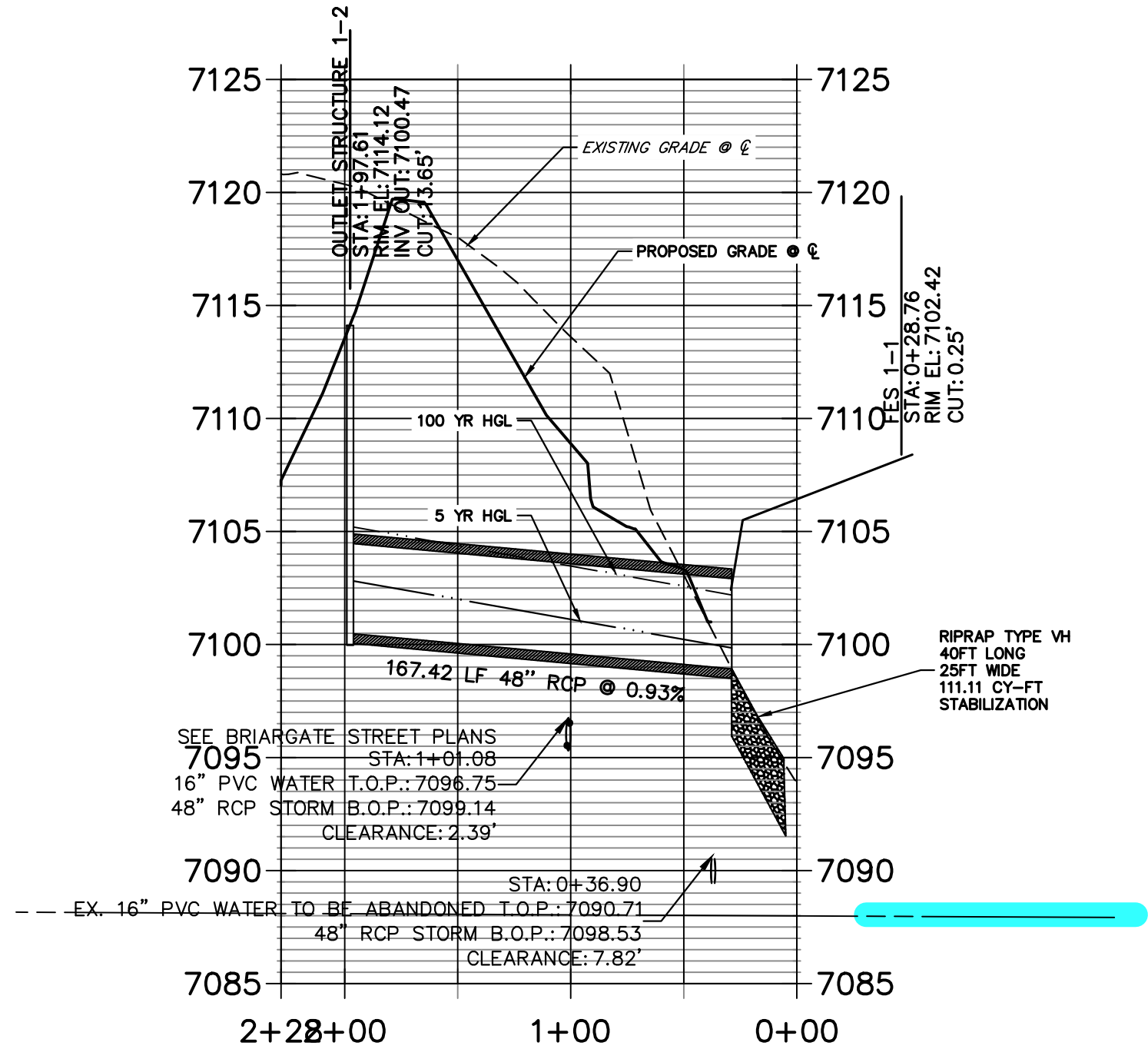
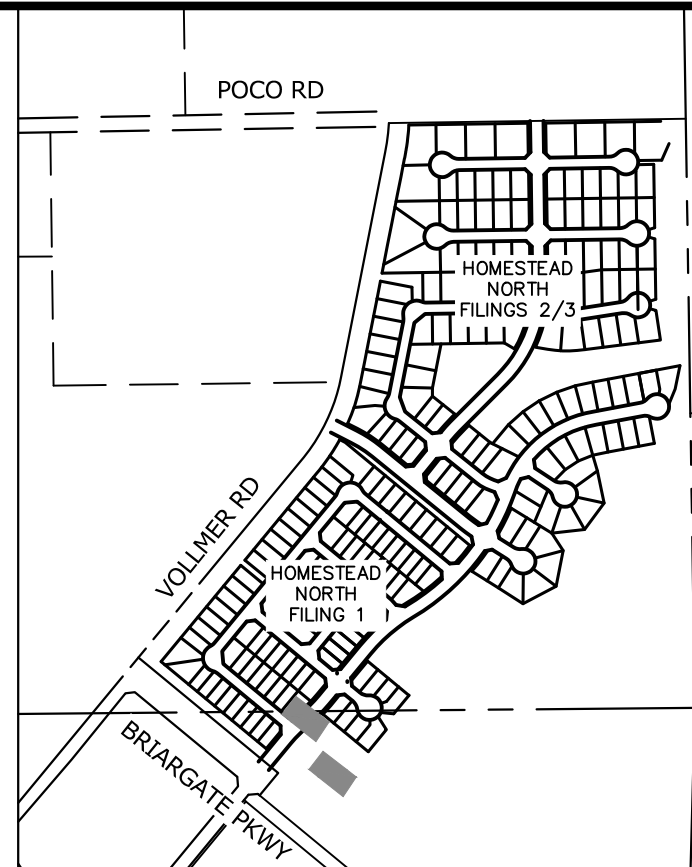
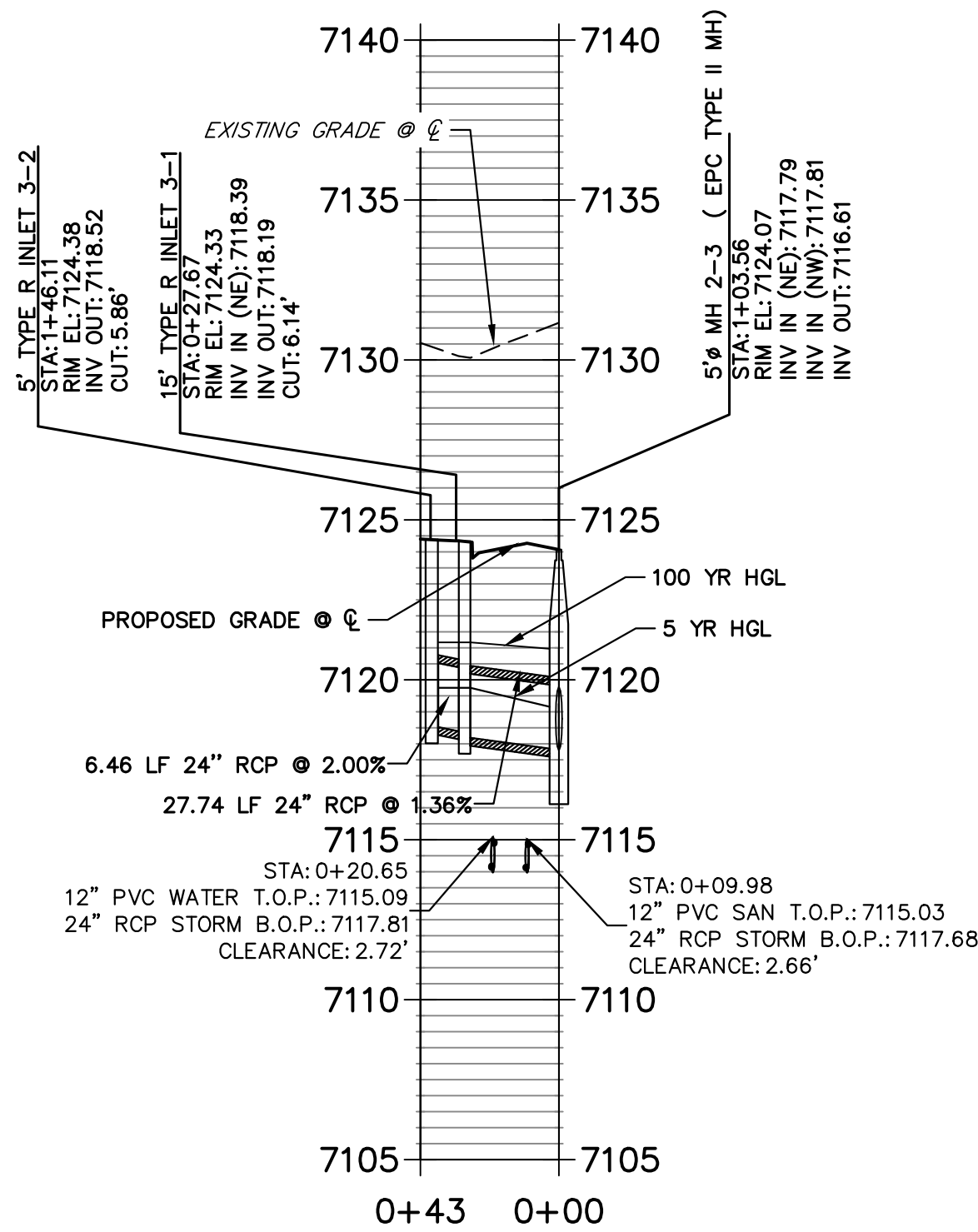


DP01 PROFILE
STA 0+00.00 TO 2+28.19

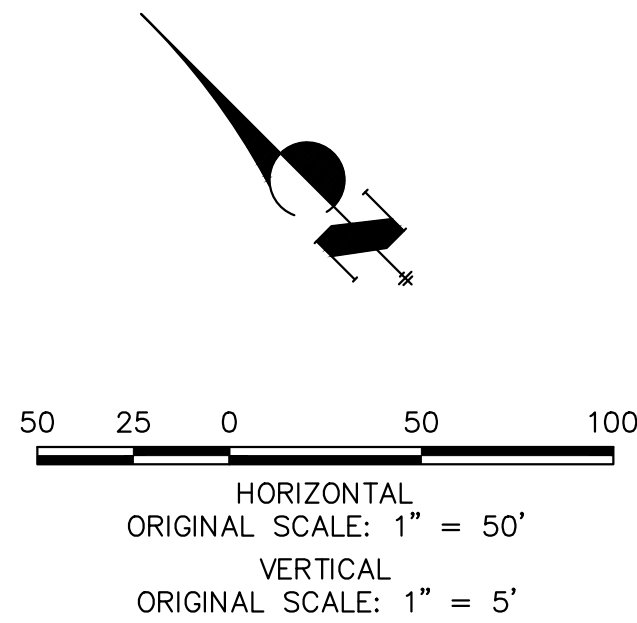


DP03 PROFILE
STA 0+00.00 TO 0+43.30



KEY MAP
SCALE: NTS

NOTE
WATER TIGHT JOINT REQUIRED WHERE
HGL IS OUTSIDE OF THE PIPE.



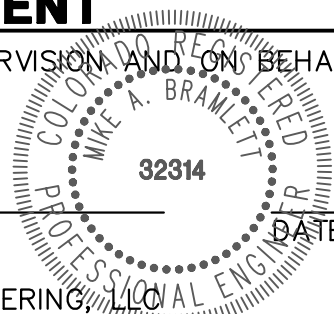
Know what's below.
Call before you dig.

ENGINEER'S STATEMENT

PREPARED UNDER MY DIRECT SUPERVISION AND ON BEHALF OF JR ENGINEERING

MIKE A. BRAMLETT, P.E.
COLORADO P.E. 32314

FOR AND ON BEHALF OF JR ENGINEERING



HOMESTEAD NORTH AT
STERLING RANCH FILING NO. 1

STORM SEWER PLAN

SHEET 3 OF 16

JOB NO. 25188.00

J.R. ENGINEERING
A Western Company

Central 303-740-9888 • Colorado Springs 719-583-2583
Fort Collins 970-491-9888 • www.jrengineering.com

PREPARED FOR

SR LAND, LLC

20 BOULDER CRESCENT

SUITE 201

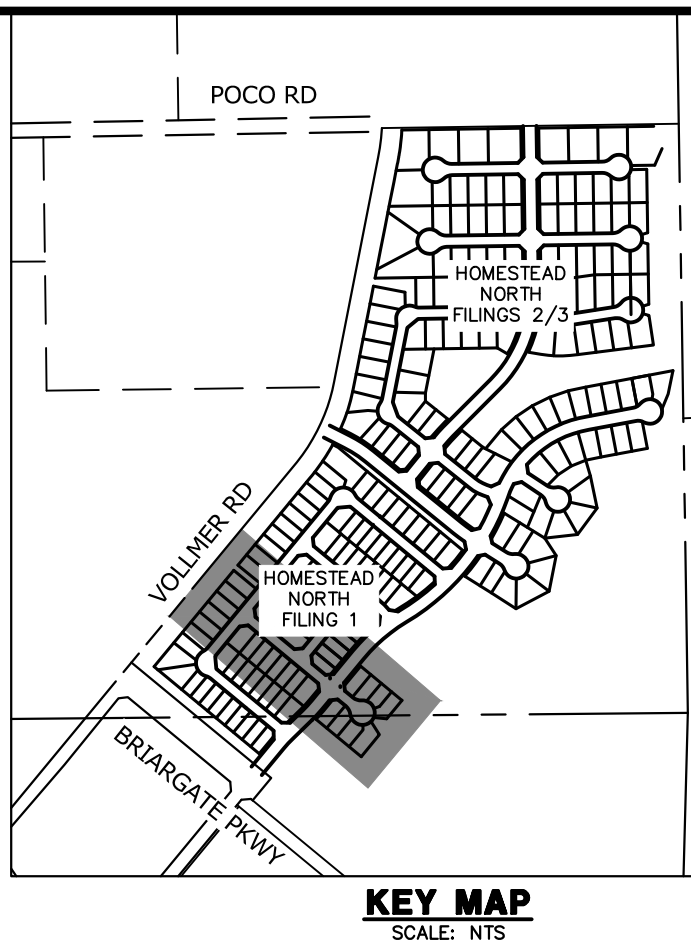
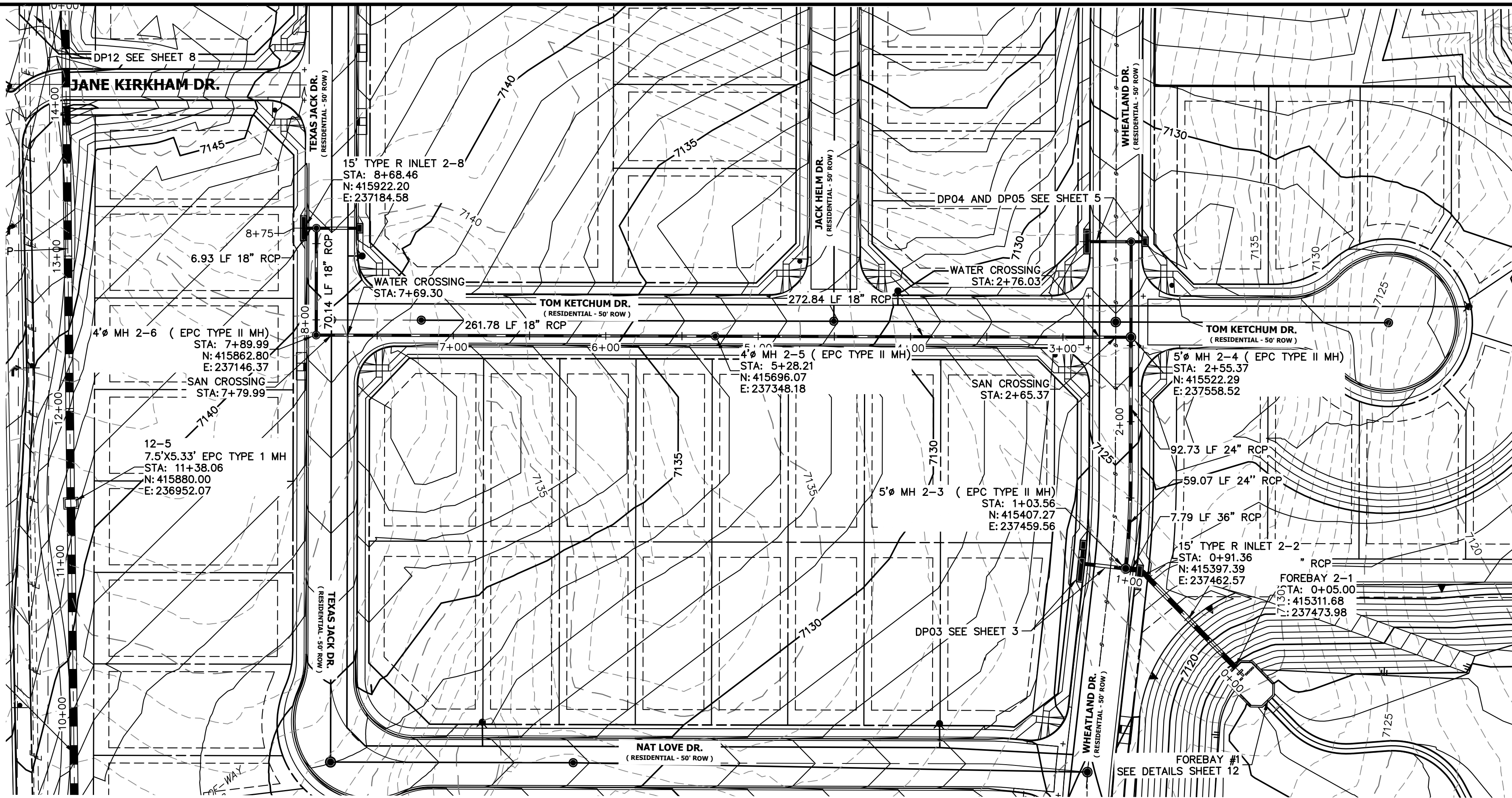
COLORADO SPRINGS, CO 80903

JAMES F. MORLEY

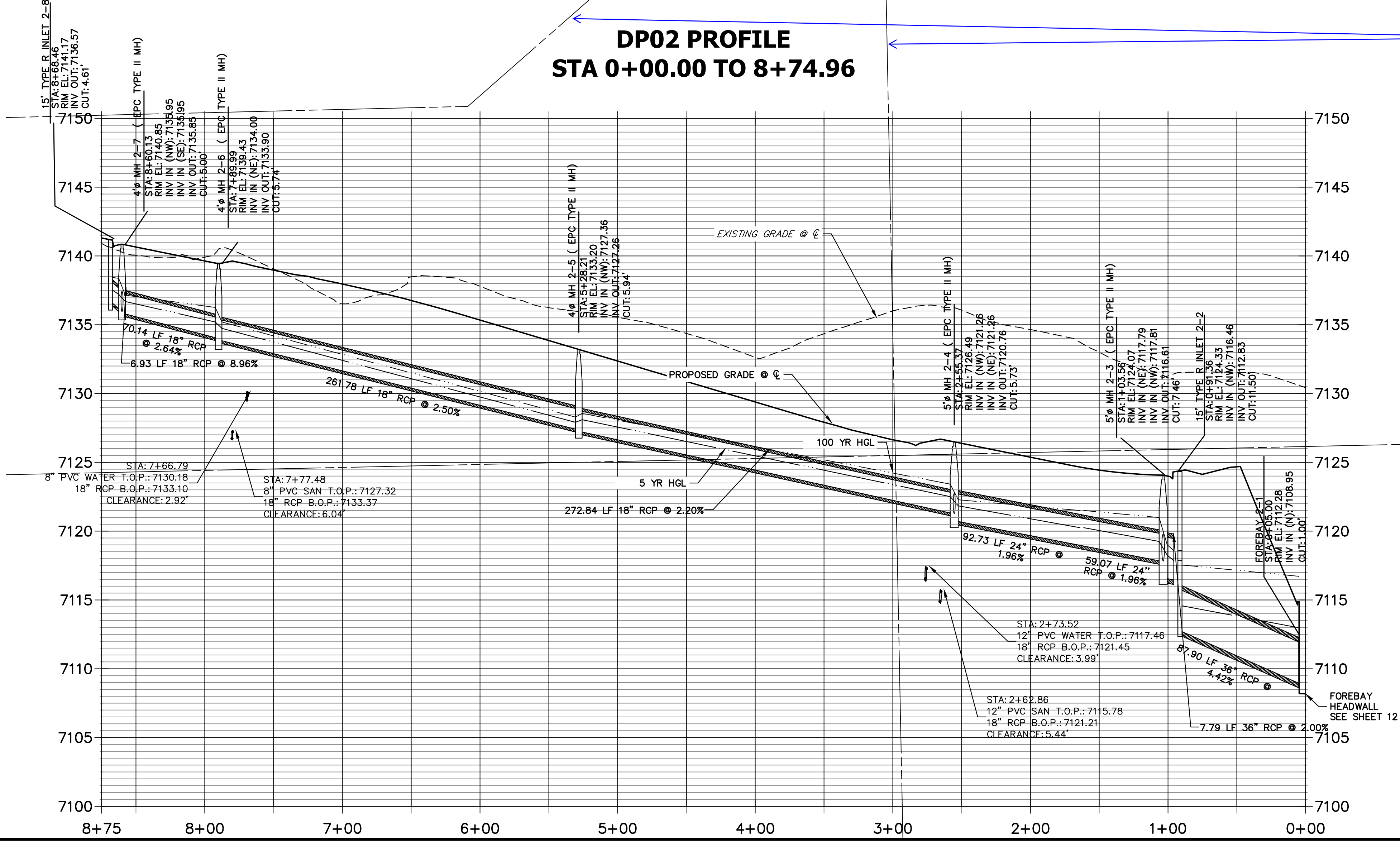
(719) 471-1742

UNTIL SUCH TIME AS
THESE DRAWINGS ARE
APPROVED BY THE
APPROPRIATE REVIEWING
AGENCIES, JR ENGINEERING
APPROVES THEIR USE
DESIGNATED BY WRITTEN
AUTHORIZATION.

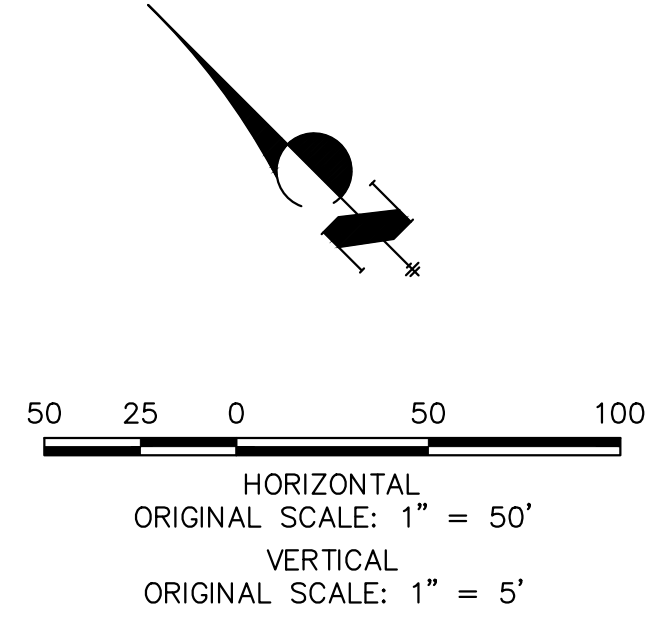
Also delete the second page 13



DP02 PROFILE
STA 0+00.00 TO 8+74.96




NOTE
WATER TIGHT JOINT REQUIRED WHERE
HGL IS OUTSIDE OF THE PIPE.



ENGINEER'S STATEMENT

PREPARED UNDER MY DIRECT SUPERVISION AND ON BEHALF OF JR ENGINEERING
Mike A. Bramlett
MIKE A. BRAMLETT, P.E.
COLORADO P.E. 32314
FOR AND ON BEHALF OF JR ENGINEERING, INC.

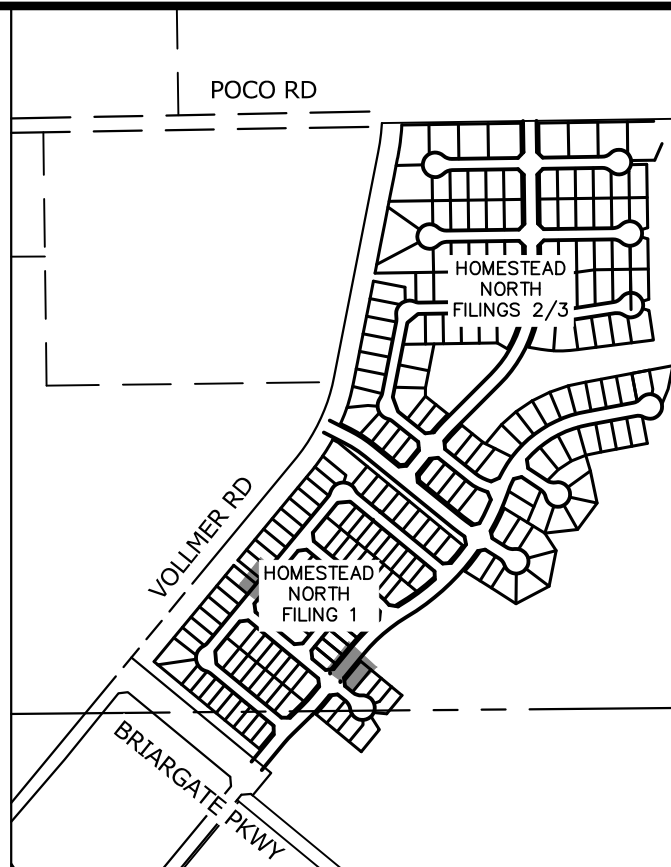
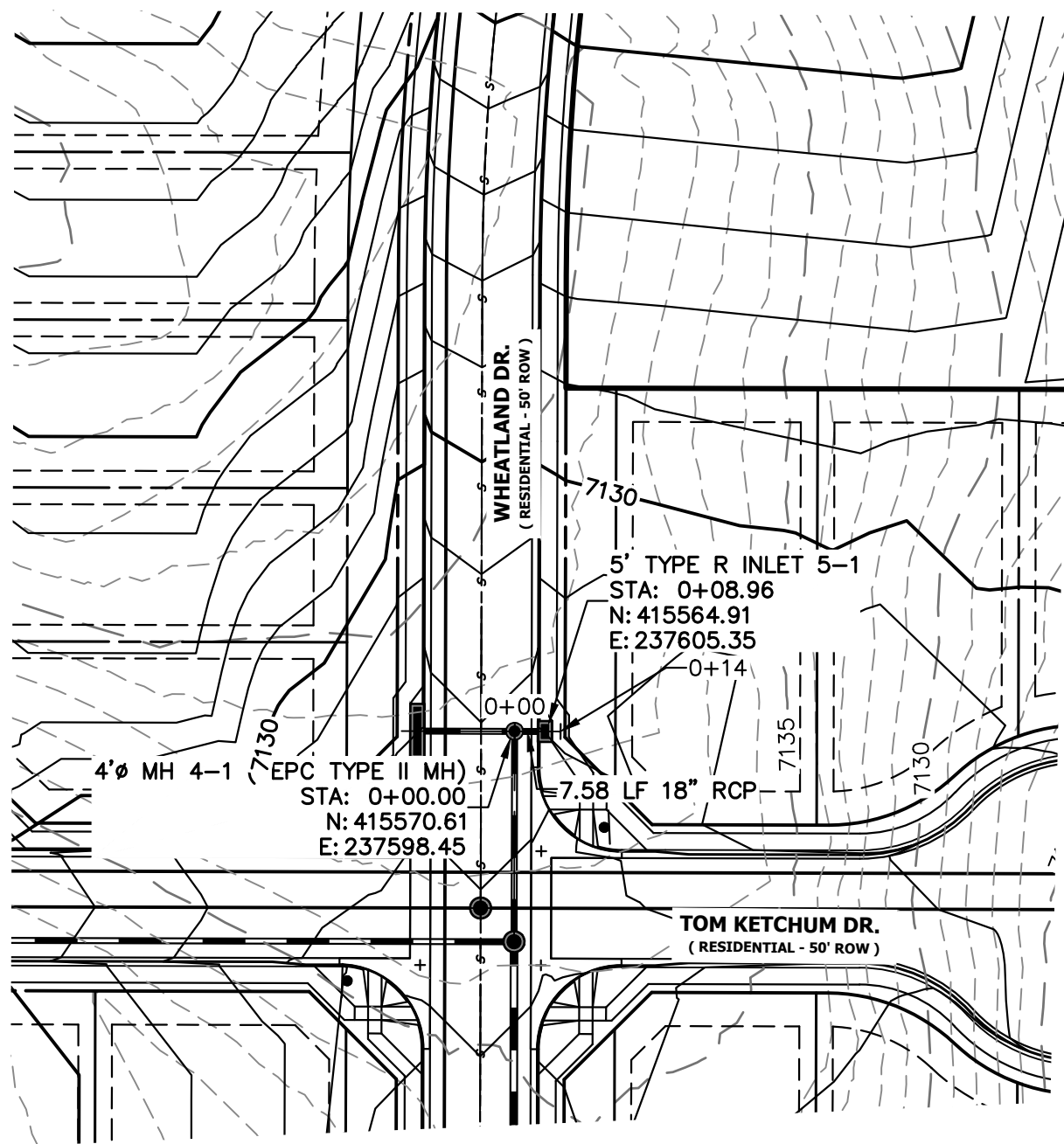
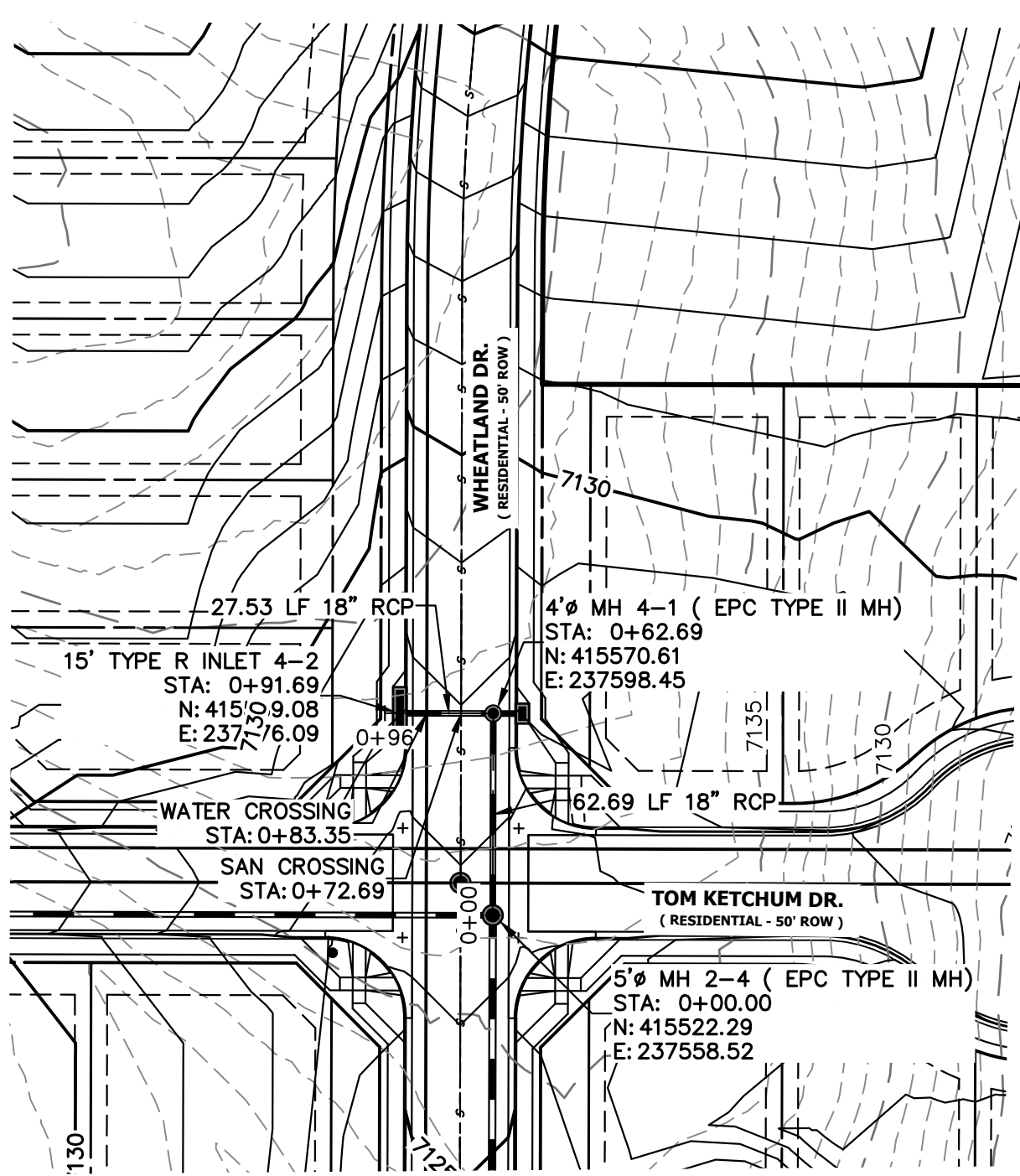
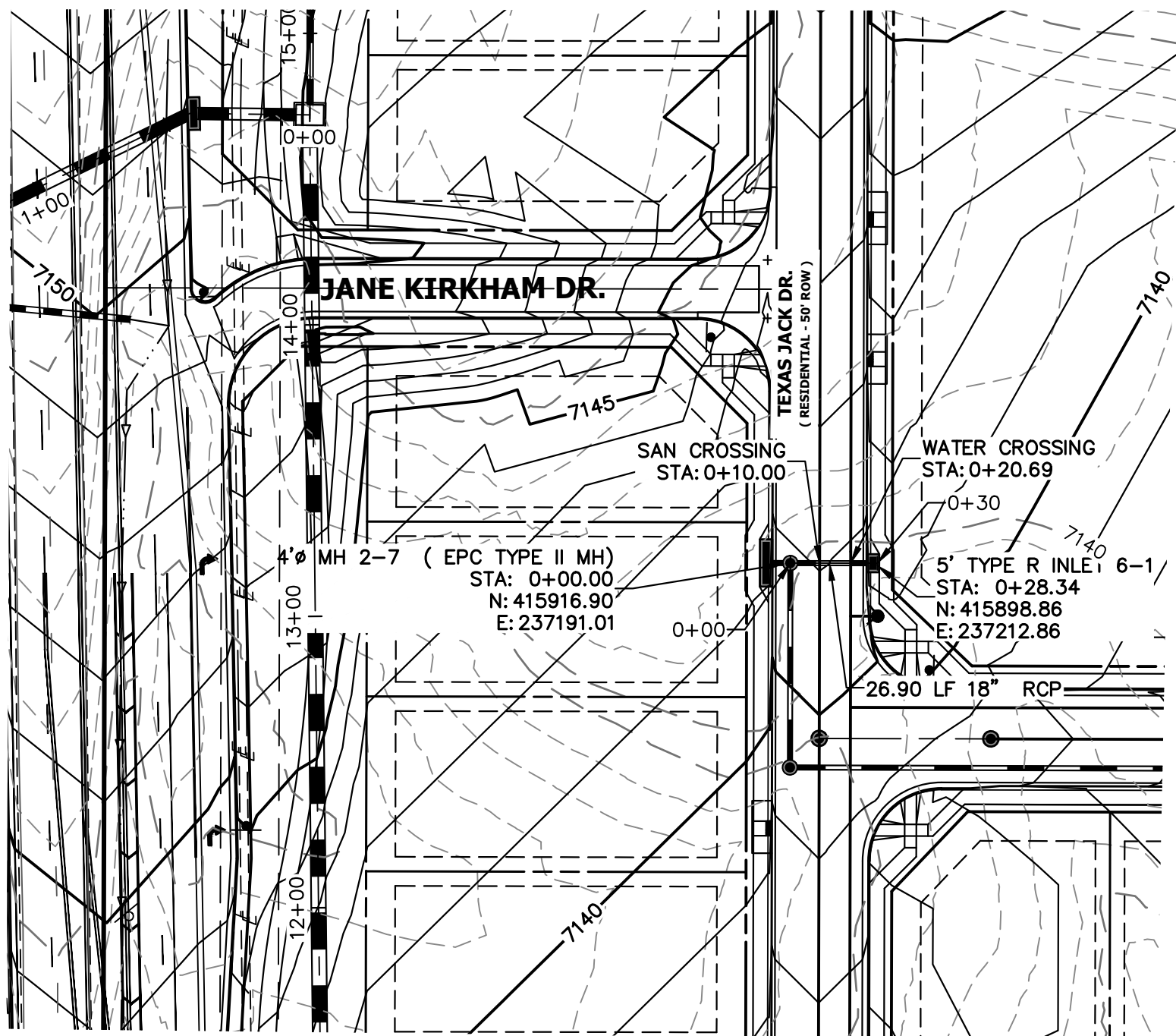
SHEET 4 OF 16		HOMESTEAD NORTH AT STERLING RANCH FILING NO. 1		H-SCALE 1"=50'		No.		REVISION		BY		DATE		 J-R ENGINEERING A Westrian Company Central 303-740-3383 • Colorado Springs 719-559-2533 Fort Collins 970-491-9888 • www.jrengineering.com		SR LAND, LLC 20 BOULDER CRESCENT SUITE 201 COLORADO SPRINGS, CO 80903 JAMES F. MORLEY (719) 471-1742		UNTIL SUCH TIME AS THESE DRAWINGS ARE APPROVED BY THE APPROPRIATE REVIEWING AGENCIES, JR ENGINEERING APPROVES THEIR USE ONLY FOR THE PURPOSES DESIGNATED BY WRITTEN AUTHORIZATION.	
JOB NO. 25188.00		STORM SEWER PLAN		DATE 10/24/22		DESIGNED BY ARJ		DRAWN BY ARJ		CHECKED BY									

UNTIL SUCH TIME AS
THESE DRAWINGS ARE
APPROVED BY THE
APPROPRIATE REVIEWING
AGENCIES, JR ENGINEERING
APPROVES THEIR USE
DESIGNATED BY WRITTEN
AUTHORIZATION.

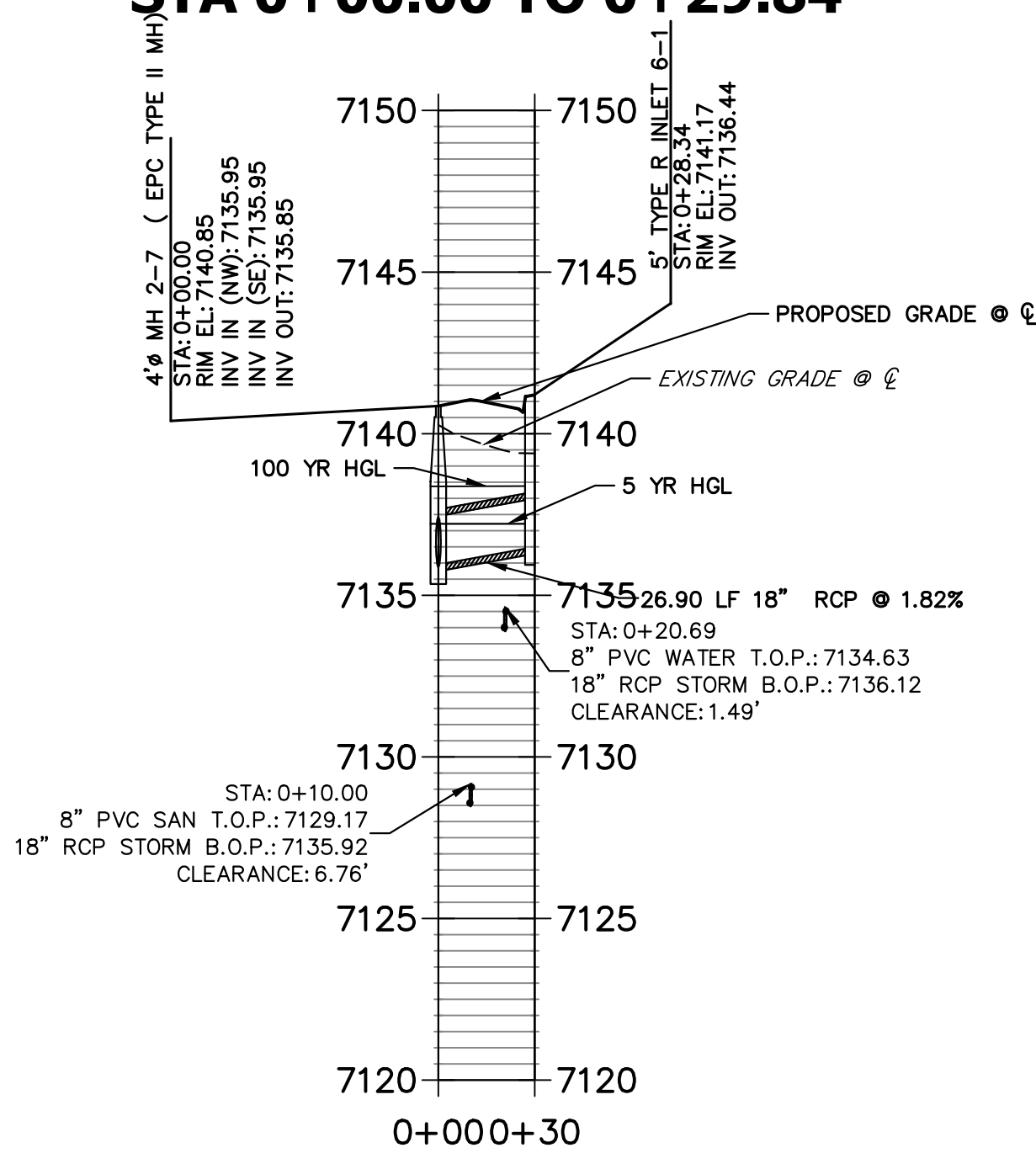
PREPARED FOR
SR LAND, LLC
20 BOULDER CRESCENT
SUITE 201
COLORADO SPRINGS, CO 80903
JAMES F. MORLEY
(719) 471-1742

J.R. ENGINEERING
A Western Company

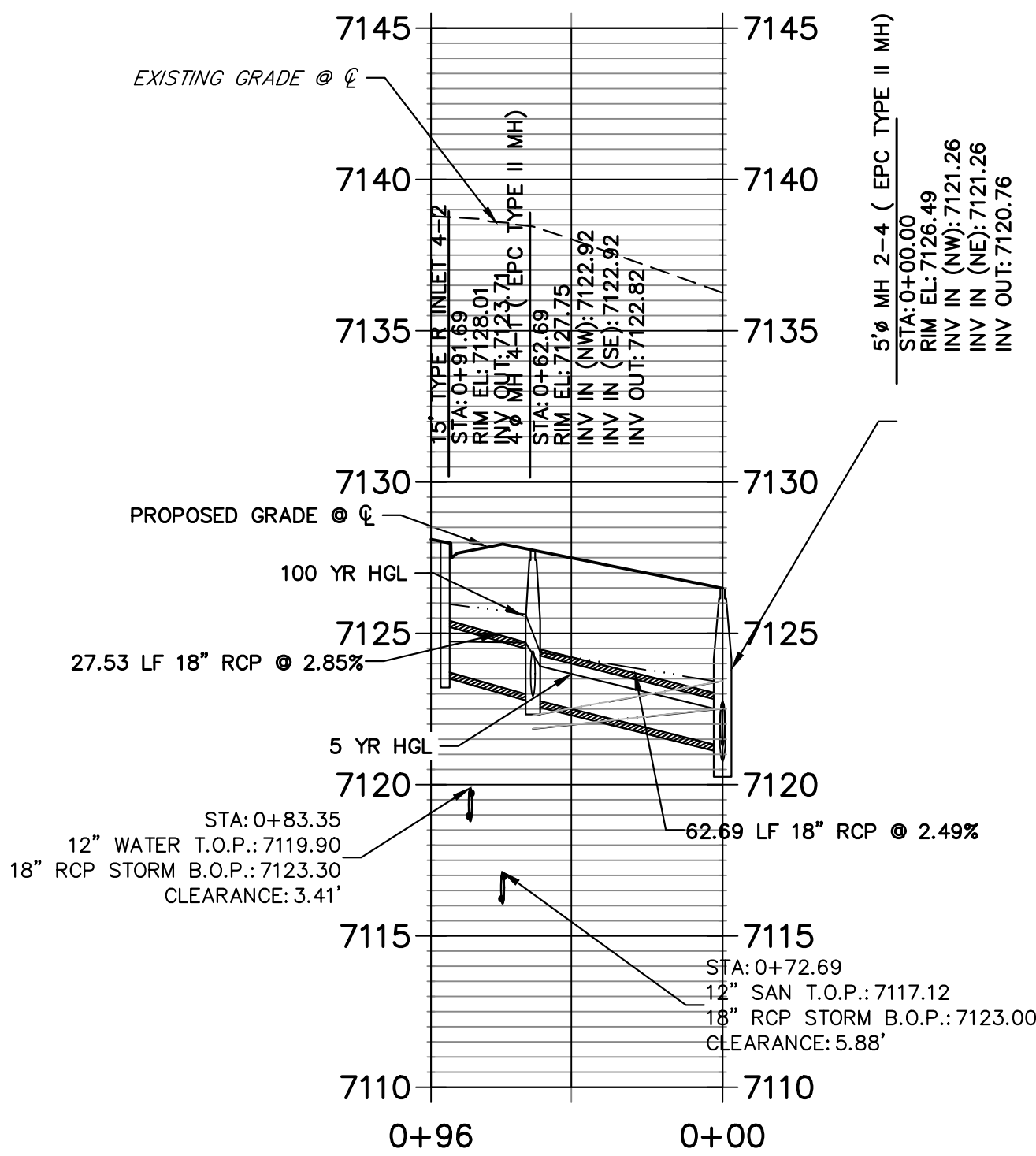
Central 303-740-9888 • Colorado Springs 719-583-2583
Fort Collins 970-491-9888 • www.jrengineering.com



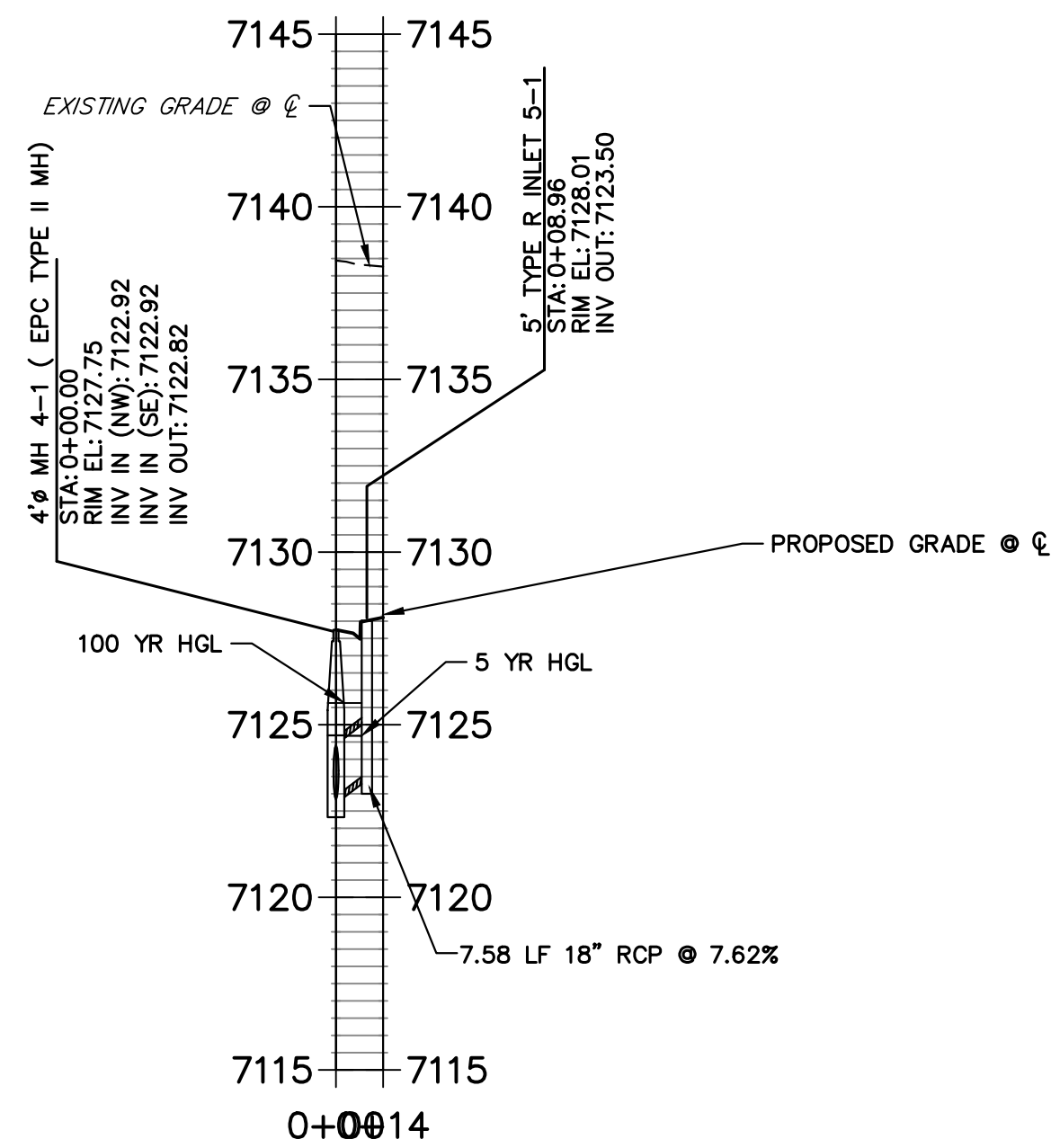
DP06 PROFILE
STA 0+00.00 TO 0+29.84



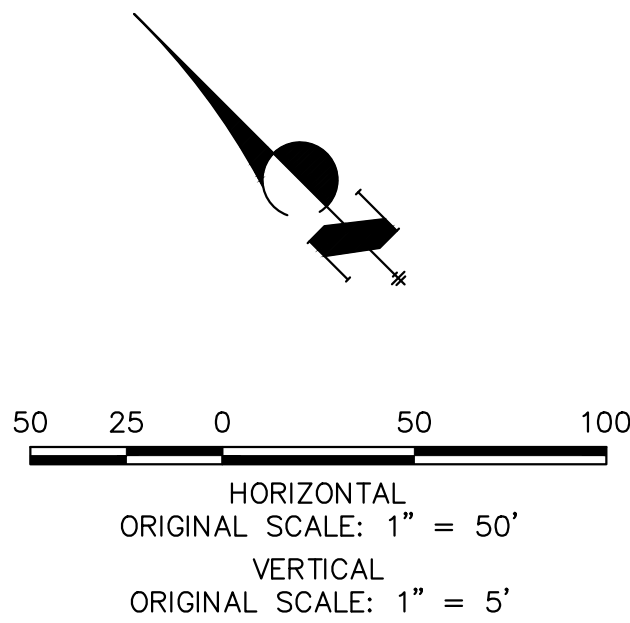
DP04 PROFILE
STA 0+00.00 TO 0+96.35



DP05 PROFILE
STA 0+00.00 TO 0+13.67



NOTE
WATER TIGHT JOINT REQUIRED WHERE
HGL IS OUTSIDE OF THE PIPE.



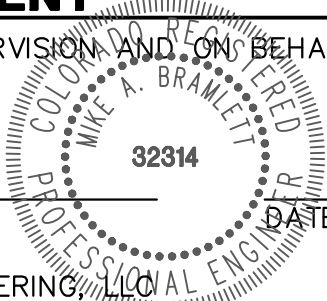
Know what's below.
Call before you dig.

ENGINEER'S STATEMENT

PREPARED UNDER MY DIRECT SUPERVISION AND ON BEHALF OF JR ENGINEERING

Mike A. Bramlett
Mike A. Bramlett, P.E.
COLORADO P.E. 32314

FOR AND ON BEHALF OF JR ENGINEERING



DATE 09/09/22

HOMESTEAD NORTH AT
STERLING RANCH FILING NO. 1

STORM SEWER PLAN

SHEET 5 OF 16

JOB NO. 25188.00

BY DATE

No. REVISION

H-SCALE 1"=50'
V-SCALE 1"=5'
DATE 10/24/22
DESIGNED BY ARJ
DRAWN BY ARJ
CHECKED BY



J.R. ENGINEERING
A Western Company

Central 303-740-9888 • Colorado Springs 719-583-2583
Fort Collins 970-491-9888 • www.jrengineering.com

PREPARED FOR

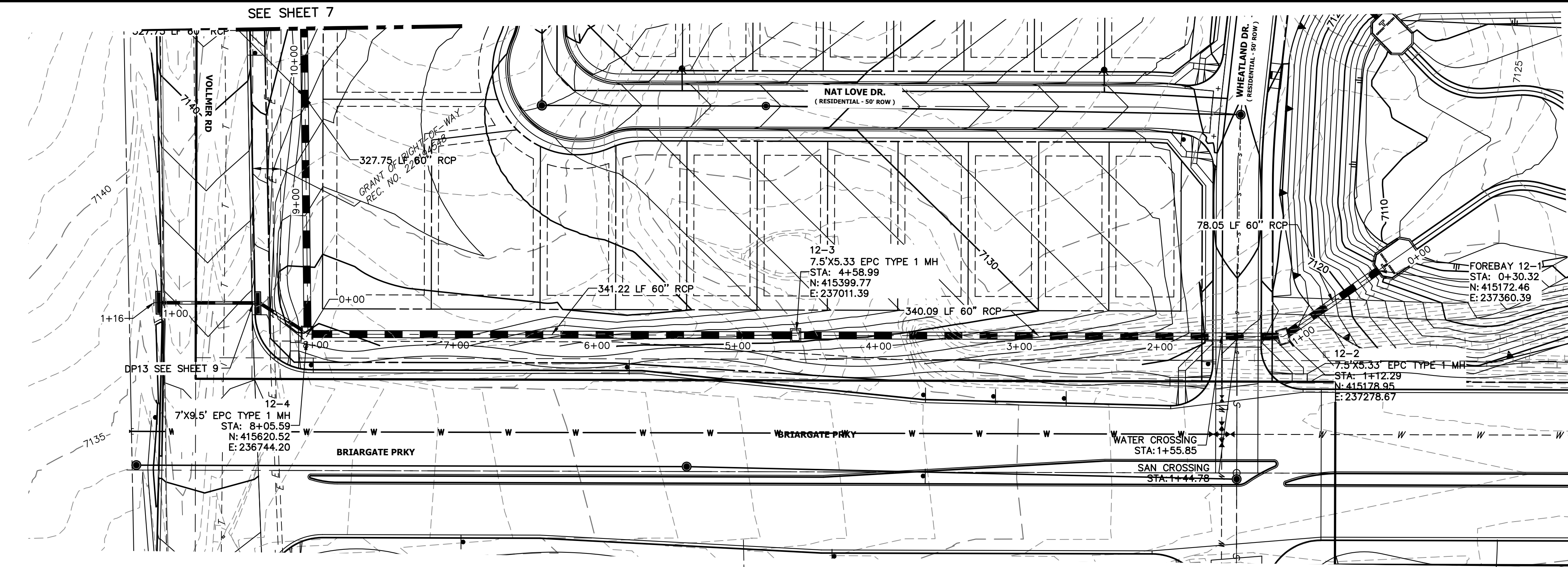
SR LAND, LLC

20 BOULDER CRESCENT
SUITE 201

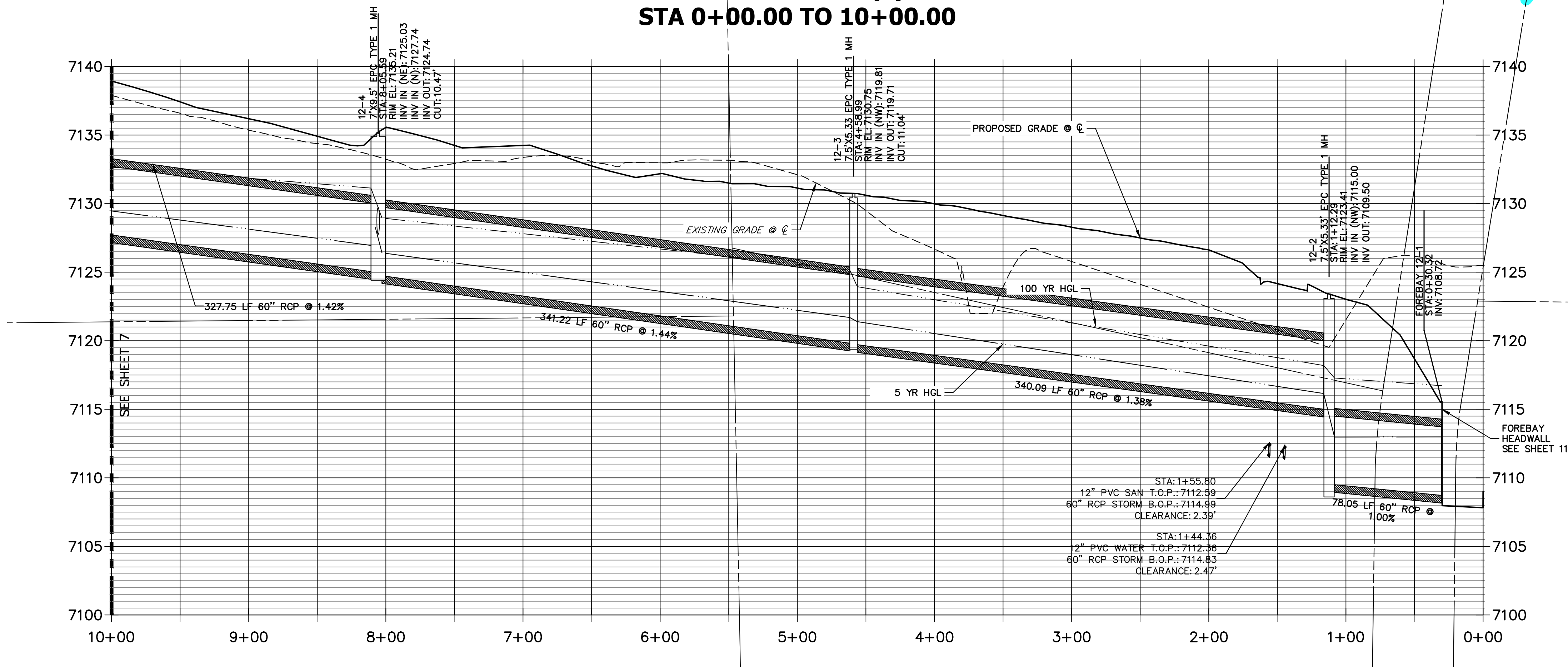
COLORADO SPRINGS, CO 80903

JAMES F. MORLEY
(719) 471-1742

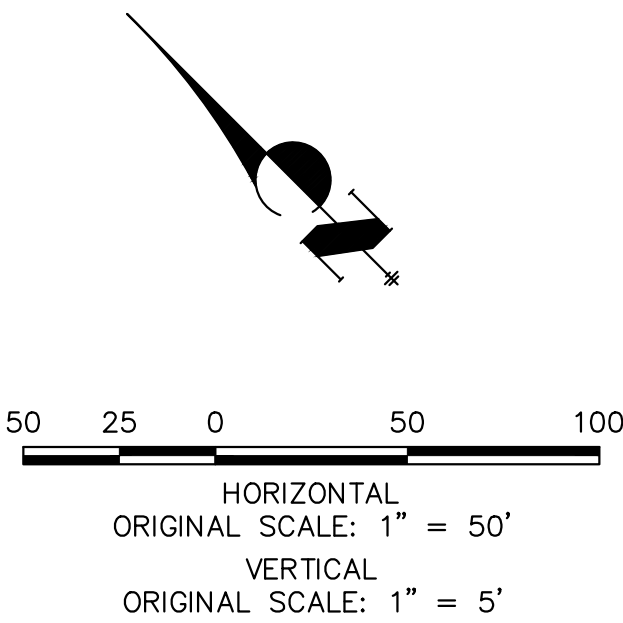
UNTIL SUCH TIME AS
THESE DRAWINGS ARE
APPROVED BY THE
APPROPRIATE REVIEWING
AGENCIES, OR ENGINEERING
APPROVES THEIR USE,
THESE DRAWINGS ARE
DESIGNATED BY WRITTEN
AUTHORIZATION.



DP12 PROFILE (1)
STA 0+00.00 TO 10+00.00



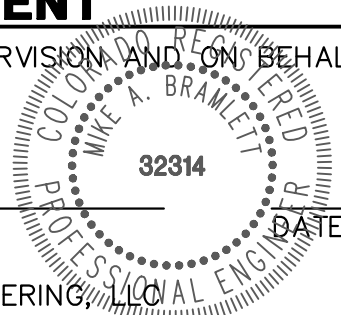
NOTE
WATER TIGHT JOINT REQUIRED WHERE
HGL IS OUTSIDE OF THE PIPE.



Know what's below.
Call before you dig.

ENGINEER'S STATEMENT

PREPARED UNDER MY DIRECT SUPERVISION AND ON BEHALF OF JR ENGINEERING
Mike A. Bramlett
MIKE A. BRAMLETT, P.E.
COLORADO P.E. 32314
FOR AND ON BEHALF OF JR ENGINEERING, INC.



HOMESTEAD NORTH AT STERLING RANCH FILING NO. 1	STORM SEWER PLAN			
	DESIGNED BY	BAB	DRAWN BY	ARJ
	CHECKED BY			
SHEET 6 OF 16		JOB NO. 25188.00		

UNLESS SUCH TIME AS THESE DRAWINGS ARE APPROVED BY THE APPROPRIATE REVIEWING AGENCIES, OR ENGINEERING APPROVES THEIR USE, THEY ARE NOT TO BE USED FOR ANY PURPOSES DESIGNATED BY WRITTEN AUTHORIZATION.

PREPARED FOR
SR LAND, LLC
20 BOULDER CRESCENT
SUITE 201
COLORADO SPRINGS, CO 80903
JAMES F. MORLEY
(719) 471-1742

J.R. ENGINEERING
A Western Company

Central 303-740-9888 • Colorado Springs 719-583-2583
Fort Collins 970-491-9888 • www.jrengineering.com