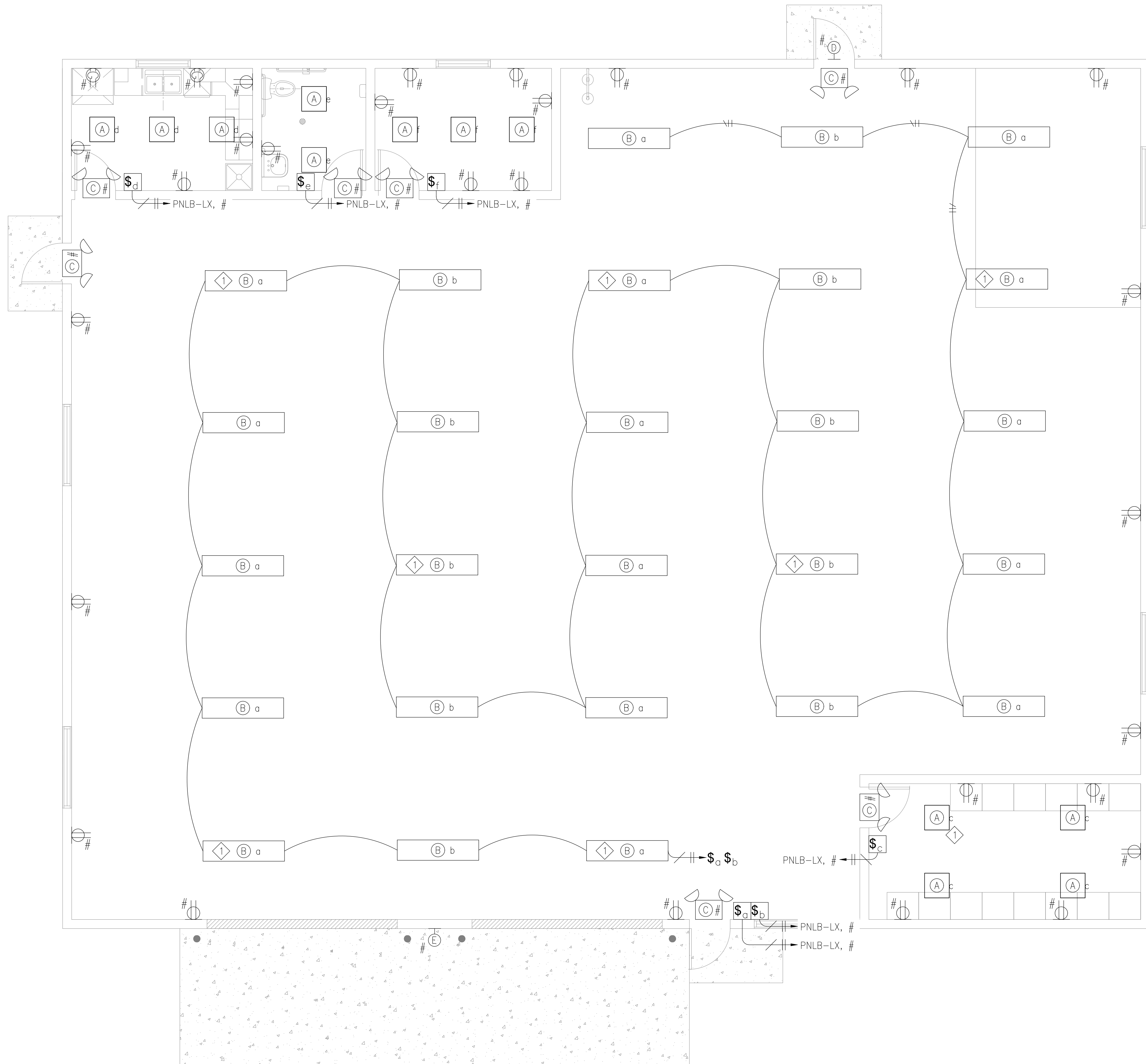


IF BAR DOES NOT MEASURE ONE INCH, SCALE OF THIS DRAWING HAS BEEN ALTERED

2023/03/24 11:54 AM By: Zachary R. Price\0395 JDS Hydro\23-01 Sterling WTP\Drawing\LIGHTING PLAN.dwg



**SHEET NOTES**

1. REFER TO E3.0 FOR FIXTURE SCHEDULE
2. LIGHTING AND RECEPTACLE WIRES ARE #12AWG UNLESS NOTED OTHERWISE.
3. REFER TO CIVIL PLANS FOR BUILDING SPECIFICATIONS AND DIMENSIONS.

**KEY NOTES**

1. FIXTURE TO HAVE BATTERY BACKUP OPTION TO FUNCTION AS SECONDARY EMERGENCY LIGHTING.

Please include the following:  
 - Owner name, contact telephone number, and email  
 - Property address  
 - North arrow and a graphic scale  
 - Height of all existing and proposed illuminating devices  
 - Photometric data including maps and diagrams furnished by manufacturers or similar showing the angle of the cut off or light emission

**1 LIGHTING AND RECEPTACLE PLAN**  
 SCALE: 1/4"=1'-0"

**Control Engineers**  
 PROJECT: 0395-23-01  
 1095 S FEDERAL WAY  
 BOISE, IDAHO 83705  
 (208) 433-9997  
 (208) 426-0550 FAX

**Colorado Springs, CO**  
 5540 Tech Center Dr., Suite 100  
 Colorado Springs, CO 80919  
 Phone: 719.227.0072  
 www.respec.com

**RESPEC**

**FALCON AREA WATER & WASTEWATER AUTH**  
 STERLING RANCH WATER TREATMENT PLANT  
 LIGHTING AND RECEPTACLE PLAN

NO.	DESCRIPTION FOR REVIEW	REVISIONS		DATE
		BY	DATE	
1		ZRP	SMM	03/24/23
2				
3				
4				
5				
6				
7				

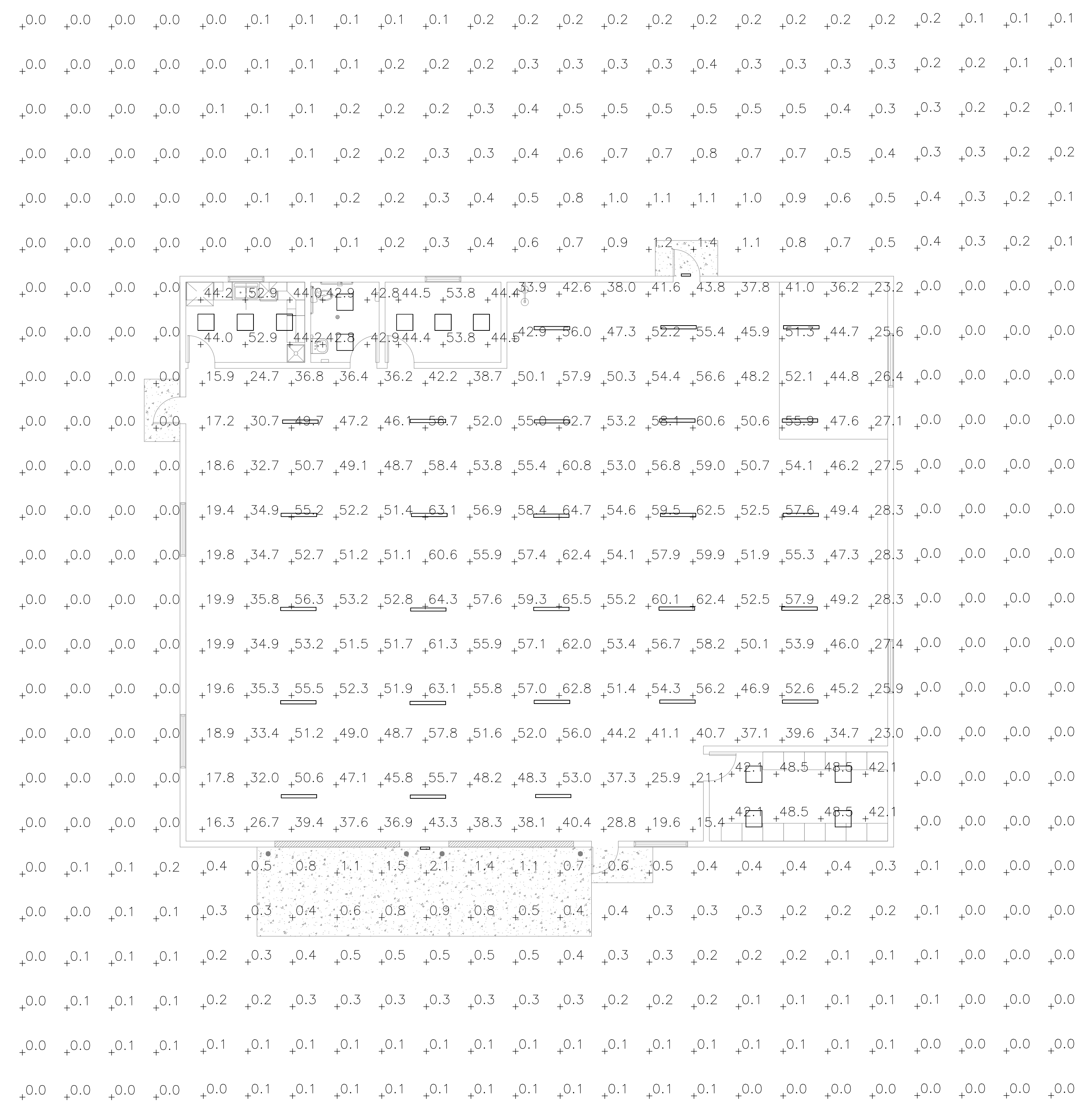
**PRELIMINARY**

Proj.#: W02242.22  
 Date: 03/24/23  
 Design: ZRP  
 Drawn: ZRP  
 Check: SMM

E2.0  
 SHEET ### OF

IF BAR DOES NOT MEASURE ONE INCH, SCALE OF THIS DRAWING HAS BEEN ALTERED

2023/03/24 11:54 AM By: Zachary R. Price\0395 JDS\_Hydro\23-01 Sterling WTP\Drawing\PHOTOMETRIC PLAN.dwg



**1 PHOTOMETRIC PLAN**  
SCALE: 1/8"=1'-0"

**SHEET NOTES**

- LUMINOUS UNITS IN FOOT CANDLES (FC).
- REFER TO CIVIL PLANS FOR BUILDING SPECIFICATIONS AND DIMENSIONS.

**Colorado Springs, CO**  
5540 Tech Center Dr., Suite 100  
Colorado Springs, CO 80919  
Phone: 719.227.0072  
[www.respec.com](http://www.respec.com)



**FALCON AREA WATER & WASTEWATER AUTH**  
STERLING RANCH WATER TREATMENT PLANT  
PHOTOMETRIC PLAN

NO.	DESCRIPTION FOR REVIEW	REVISIONS		DATE
		BY	APP.	
1		ZRP	SMM	03/24/23
2				
3				
4				
5				
6				
7				

**PRELIMINARY**

**CE** PROJECT: 0395-23-01  
1095 S FEDERAL WAY  
BOISE, IDAHO 83705  
(208) 433-9997  
(208) 426-0550 FAX

**Control Engineers**

Proj.#: W02242.22  
Date: 03/24/23  
Design: ZRP  
Drawn: ZRP  
Check: SMM

E2.1  
SHEET ### OF

CODE	DESCRIPTION	VOLTAGE	WATTS	MAKE/MODEL	MANUFACTURER	MOUNTING	NOTES	DRAWING
A	CPX LED PANEL 2'X2'	120-277VAC	26.59W	CPX 2X2 3200LMHE 80CRI 40K SWL	LITHONIA LIGHTING	CEILING		E2.0
B	UFIT 48" LED STRIPLIGHT	120-277VAC	57.2W	UFIT L48 8000LM HEF MVOLT GZ10 40K 80CRI	LITHONIA LIGHTING	CEILING/SUSPENDED		E2.0
C	ECC EMERGENCY EXIT COMBO LIGHT	120/277VAC	1.1W	ECC R	LITHONIA LIGHTING	CEILING/SUSPENDED		E2.0
D	D-SERIES SIZE 1 LED WALLPACK	120-277VAC	13.3W	DSXW 1 LED 10C 350 40K T3M MVOLT	LITHONIA LIGHTING	WALLPACK		E2.0
E	D-SERIES SIZE 1 LED WALLPACK	120-277VAC	18.0W	DSXW 1 LED 20C 350 40K T3M MVOLT	LITHONIA LIGHTING	WALLPACK		E2.0

# 1 LUMINAIRE FIXTURE SCHEDULE

SCALE: NONE



FALCON AREA WATER & WASTEWATER AUTH  
 STERLING RANCH WATER TREATMENT PLANT  
 LIGHTING SCHEDULE

NO.	DESCRIPTION FOR REVIEW	REVISIONS		DATE
		BY	DATE	
1		ZRP	SMM	03/24/23
2				
3				
4				
5				
6				
7				

PRELIMINARY

PROJECT: 0395-23-01  
 1095 S FEDERAL WAY  
 BOISE, IDAHO 83705  
 (208) 433-9997  
 (208) 426-0550 FAX

**Control Engineers**

Proj.#: W02242.22  
 Date: 03/24/23  
 Design: ZRP  
 Drawn: ZRP  
 Check: SMM