



American Revolution LED Series 247L

PRODUCT OVERVIEW



Features:

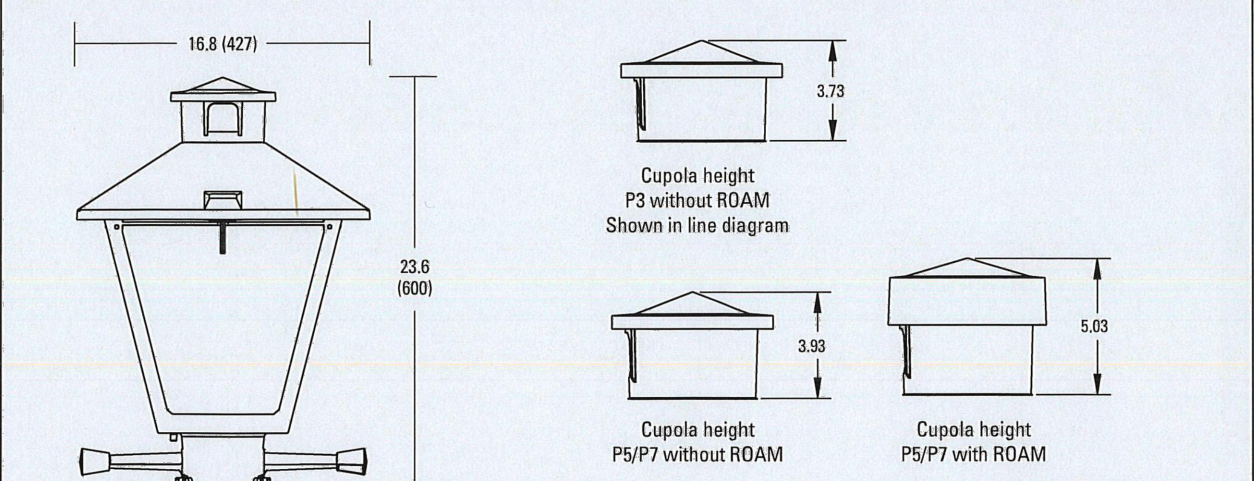
- Die-cast aluminum housing and hood for long-life performance
- Die-cast trigger latch (TL) and captive thumb screws option available for easy access to internal components
- Optical assembly designed for maximum performance, available in Type II, Type III and Type V
- Hinged hood and captive thumb screws provision afford quick, easy access to electrical and optical area for servicing
- Slipfitter with three set screws allows secure installation to pole sizes 2-3/8" or 3" O.D.
- Surge protection device (standard) exceeds ANSI C82.41 Category C1 criteria (surge tested at 10kV/5kA)
- Complies with ANSI: C136.2, C136.10, C136.15
- CSA listed and suitable for up to 30°C ambient
- Rated L70 LED life greater than 100,000 hours at 25°C
- Replaces up to 150W HPS light source incumbent models
- LED electronic 0V-10V dimmable driver
- DesignLights Consortium® (DLC) qualified product. Not all versions of this product may be DLC qualified. Please check the DLC Qualified Products List at www.designlights.org/DQL to confirm which versions are qualified.

Applications:

- Streetscapes
- Walkways
- Pathways
- Parks

MVEA spec # 247L 10LEDE10 MVOLT 4K RS AY PCLL

DIMENSIONS



Effective Projected Area (EPA)
The EPA for the American Revolution Series 247 is 1.8 sq. ft. P's or P's option total height is 24.9 (EPA). Approx. Wt. = 38 lbs.

All dimensions are inches (millimeters) unless otherwise noted.

Note: Specifications subject to change without notice. American Revolution Series 247L LED



American Revolution LED Series 247L

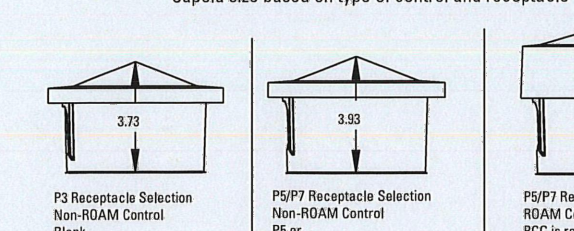
ORDERING INFORMATION

Example: 247L 20LEDE10 MVOLT 4K RS AY

Series	Performance Package	Voltage	Color Temperature (CCT)
247L American Revolution LED	20LEDE10 20 Chips, 1050 mA Driver, 72 input watts 20LEDE70 20 Chips, 700 mA Driver, 48 input watts 10LEDE10 10 Chips, 1050 mA Driver, 36 input watts 10LEDE70 10 Chips, 700 mA Driver, 28 input watts 10LEDE53 10 Chips, 525 mA Driver, 18 input watts 10LEDE35 10 Chips, 350 mA Driver, 18 input watts	MVOLT Multi-volt, 120-277V 247 247V 480 480V	3K 3000K 4K 4000K 5K 5000K

Distribution	Optics	Options	Miscellaneous
R2 Type II R3 Type III R5 Type V	AY Acrylic (blank) FY Polycarbonate GY Gray DBB Dark Bronze WH White BZ Bronze	Blank (standard) Gray Dark Bronze White Bronze	SS Stainless steel hardware NL NEMA Label NL Not CSA Listed TL Tool-less Entry LDR Ladder Rest SH Shorting Cap SHX* Not CSA Listed Shorting Cap HSB House Side Shield Black HSW House Side Shield White GR Enhanced Corrosion Resistant Finish RCC* ROAM Dimming Node Cupola Cover
		Photocontrol (blank) 3 pin NEMA Photocontrol Receptacle (standard) NR 2 No Photocontrol Receptacle PS 2 5 pin NEMA Photocontrol Receptacle (dimmi-able driver included) P7 2 7 pin NEMA Photocontrol Receptacle (dimmi-able driver included) PCLL 15 Solid State Long Life Photocontrol PCSS 15A Not CSA Listed Solid State Long Life Photocontrol (120-277V)	Accessories RNC57 1 ROAM Dimming Node Cupola Cover

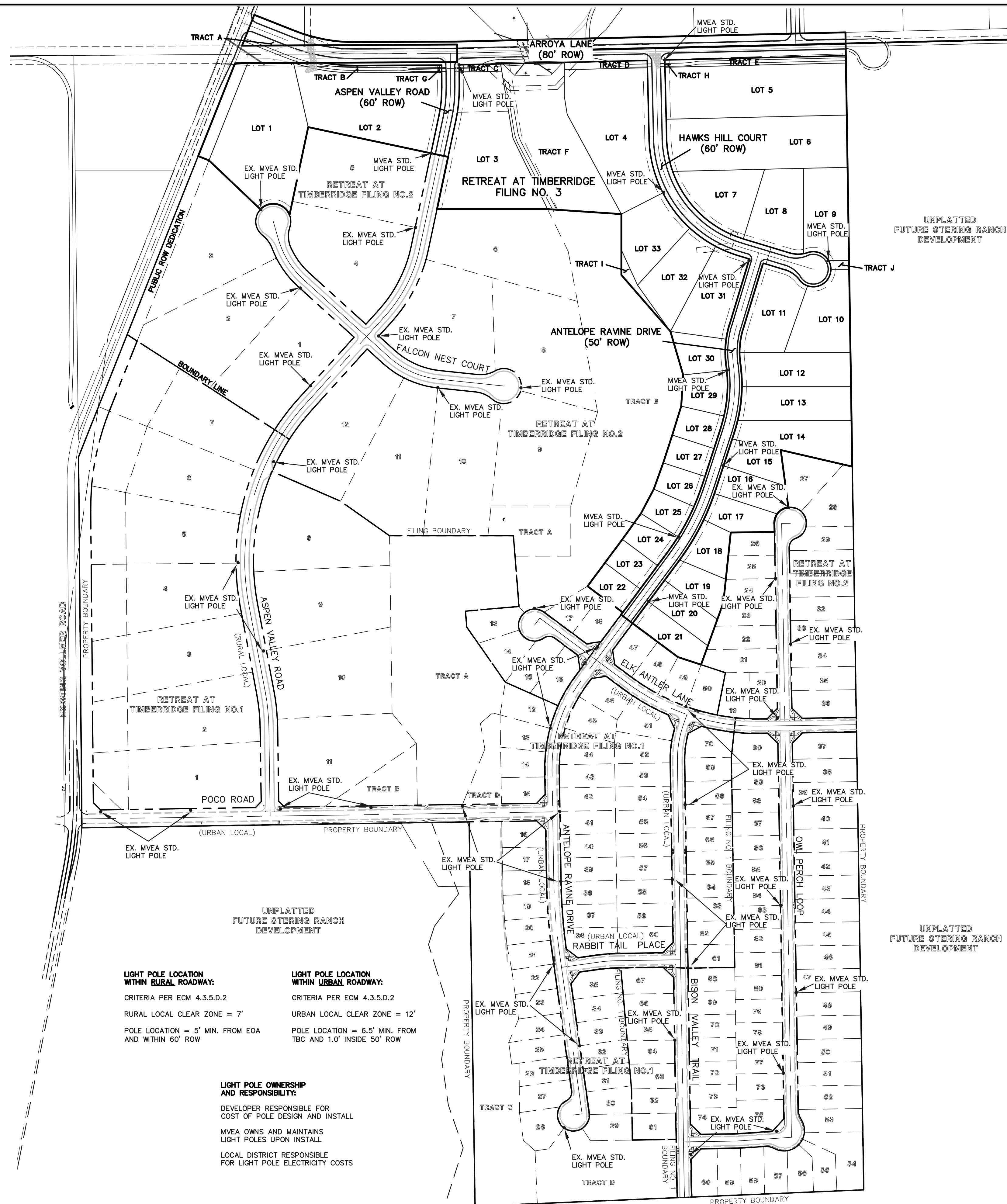
Cupola size based on type of control and receptacle



- Notes:
- Other colors available, please contact factory
 - PC and SH not available with NR option
 - Taller cupola cover (RCC) is required when used with ROAM or other similar wireless monitoring control systems
 - Standard failure mode: Fail On
 - Photocontrols supplied with ANSI Standard Turn-On levels
 - NL option is required
 - Ships with unit, field installation
 - Required when using ROAM or other similar wireless monitoring control systems

AEL American Electric Lighting
All Headquarters: 3025 Columbia Road, Greenville, OH 45033
www.americanelectriclighting.com
© 2017 Acuity Brands Lighting, Inc. All Rights Reserved. 05/26/17

Warranty Five-year limited warranty. Complete warranty terms located at www.americanelectriclighting.com/customerresources/terms_and_conditions.aspx. Actual performance may differ as a result of end-user environment and application. All values are design or typical values, measured under laboratory conditions at 25°C. Specifications subject to change without notice.
Please contact your sales representative for the latest product information.



LIGHT POLE LOCATION WITHIN RURAL ROADWAY:
CRITERIA PER ECM 4.3.5.D.2
RURAL LOCAL CLEAR ZONE = 7'
POLE LOCATION = 5' MIN. FROM EOA AND WITHIN 60' ROW

LIGHT POLE LOCATION WITHIN URBAN ROADWAY:
CRITERIA PER ECM 4.3.5.D.2
URBAN LOCAL CLEAR ZONE = 12'
POLE LOCATION = 6.5' MIN. FROM TBC AND 1.0' INSIDE 50' ROW

LIGHT POLE OWNERSHIP AND RESPONSIBILITY:
DEVELOPER RESPONSIBLE FOR COST OF POLE DESIGN AND INSTALL
MVEA OWNS AND MAINTAINS LIGHT POLES UPON INSTALL
LOCAL DISTRICT RESPONSIBLE FOR LIGHT POLE ELECTRICITY COSTS

48 HOURS BEFORE YOU DIG, CALL UTILITY LOCATORS
811
UTILITY NOTIFICATION CENTER OF COLORADO
IT'S THE LAW

THE LOCATIONS OF EXISTING UNDERGROUND UTILITIES ARE SHOWN IN AN APPROXIMATE WAY ONLY. THE CONTRACTOR SHALL DETERMINE THE EXACT LOCATION OF ALL EXISTING UTILITIES BEFORE COMMENCING WORK. THE CONTRACTOR SHALL BE FULLY RESPONSIBLE FOR ANY AND ALL DAMAGES WHICH MIGHT BE CAUSED BY HIS FAILURE TO EXACTLY LOCATE AND PRESERVE ANY AND ALL UNDERGROUND UTILITIES.

NO.	REVISION	DATE

REVIEW:
PREPARED UNDER MY DIRECT SUPERVISION FOR AND ON BEHALF OF CLASSIC CONSULTING ENGINEERS AND SURVEYORS, LLC
MARC. A. WHORTON, COLORADO P.E. #37155 DATE

ORIENTATION VIEWED FROM TOP OF POLE

UNPLATTED FUTURE STERLING RANCH DEVELOPMENT

CMT
145 Wood Street
Dahl, SC 29918
803-414-6775
www.cmtpe.com

MOUNTAIN VIEW

CAT. NO.: TB23-D-50-3-H-T238

SPECS: WIND VEL.: 100@1.3
TOT. LENGTH: 23'-0" LUM. WEIGHT: 50 lbs.
EMBED. DEPTH: 4'-0" LUM. EPA: 3.50 sq.ft.
TIP WIDTH: 4.41" STATIC DEFL.:
WEIGHT: 50 lbs. TOTAL DEFL.:
DRAWN BY: PLF DATE: 01/16/2017

QUANTITY: JOB NUMBER: SPEC: WIND VEL.: 100@1.3
P.O. NUMBER: APPD BY: EMBED. DEPTH: 4'-0" LUM. EPA: 3.50 sq.ft.
REV. DATE BY REMARKS TIP WIDTH: 4.41" STATIC DEFL.:
QUOTE: WEIGHT: 50 lbs. TOTAL DEFL.:
DRAWN BY: PLF DATE: 01/16/2017

619 N. Cascade Avenue, Suite 200
Colorado Springs, Colorado 80903
(719)785-0790
(719)785-0799(Fax)

RETREAT AT TIMBERIDGE FILING NO. 3

CONSTRUCTION PLANS
STREET LIGHT POLE LOCATION PLAN

DESIGNED BY	PRA	SCALE	DATE
			11-22-2022
DRAWN BY	PRA	(H) 1" = 200'	SHEET 11 OF 19
CHECKED BY	(V) 1" = N/A	JOB NO.	1185.30