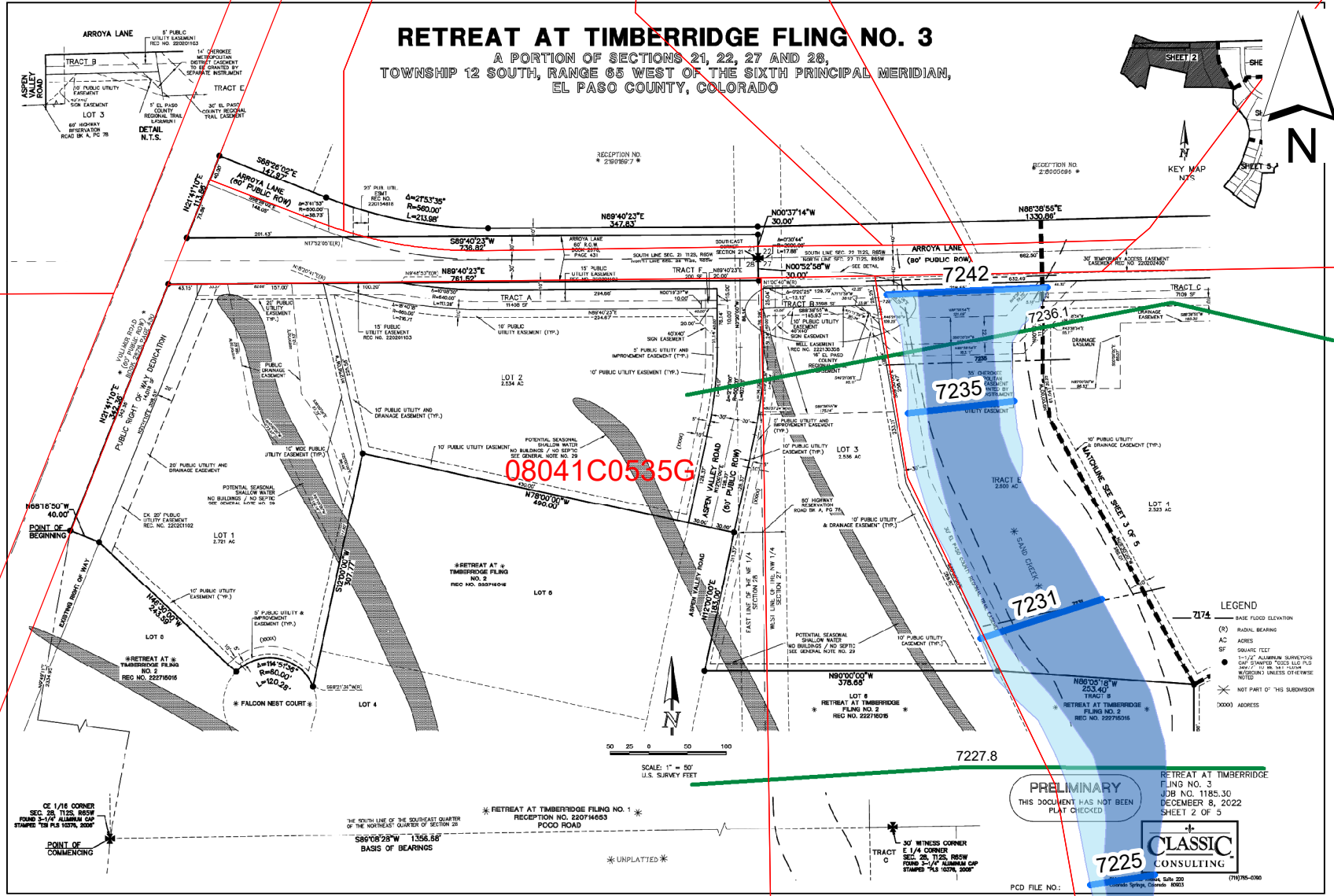


RETREAT AT TIMBERRIDGE FLING NO. 3

A PORTION OF SECTIONS 21, 22, 27 AND 28,
TOWNSHIP 12 SOUTH, RANGE 65 WEST OF THE SIXTH PRINCIPAL MERIDIAN,
EL PASO COUNTY, COLORADO



PRELIMINARY
THIS DOCUMENT HAS NOT BEEN
FLAT CHECKED

RETREAT AT TIMBERRIDGE
FLING NO. 3
JOB NO. 1185.30
DECEMBER 8, 2022
SHEET 2 OF 5



7225
CLASSIC CONSULTING

