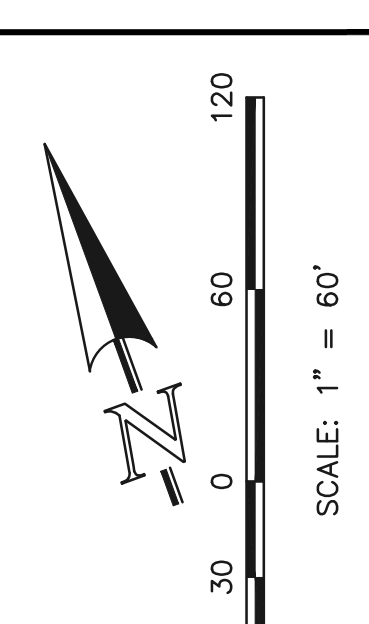
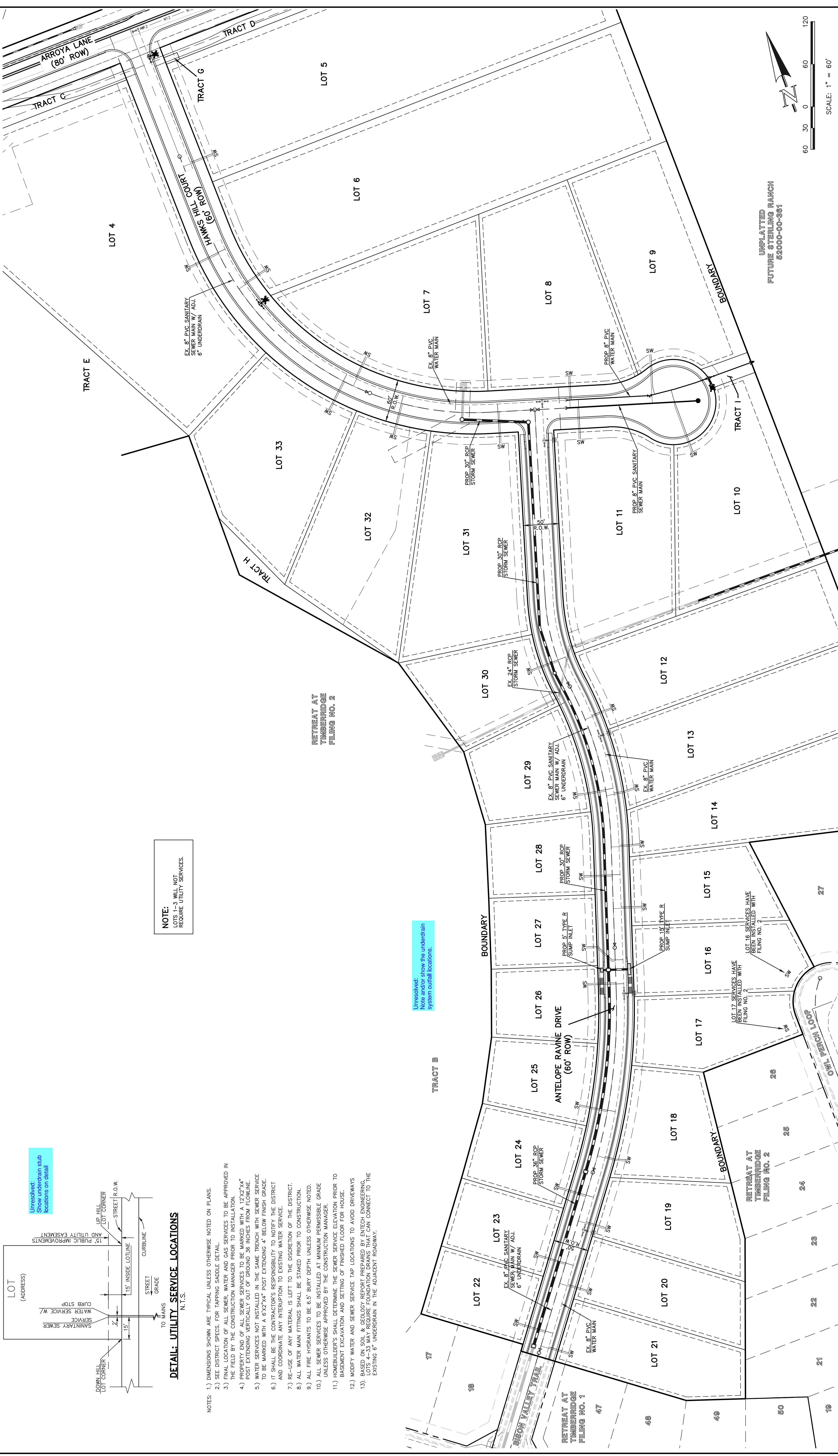


**DETAIL: UTILITY SERVICE LOCATIONS**  
N.T.S.

- NOTES: 1) DIMENSIONS SHOWN ARE TYPICAL UNLESS OTHERWISE NOTED ON PLANS.  
 2) SEE DISTRICT SPECS FOR TAPPING SADDLE DETAIL.  
 3) FINAL LOCATION OF ALL SEWER, WATER, AND GAS SERVICES TO BE APPROVED IN THE FIELD BY THE CONSTRUCTION MANAGER PRIOR TO INSTALLATION.  
 4) PROPERTY END OF ALL SEWER SERVICES TO BE MARKED WITH A 12"x2"x4" POST EXTENDING VERTICALLY OUT OF GROUND .36 INCHES FROM FLOWLINE.  
 5) WATER SERVICES NOT INSTALLED IN THE SAME TRENCH WITH SEWER SERVICE TO BE MARKED WITH A 6"x2"x4" POST EXTENDING 4" BELOW FINISH GRADE.  
 6) IT SHALL BE THE CONTRACTOR'S RESPONSIBILITY TO NOTIFY THE DISTRICT AND COORDINATE ANY INTERRUPTION TO EXISTING WATER SERVICE.  
 7) RE-USE OF ANY MATERIAL IS LEFT TO THE DISCRETION OF THE DISTRICT.  
 8) ALL WATER MAIN FITTINGS SHALL BE STAKED PRIOR TO CONSTRUCTION.  
 9) ALL FIRE HYDRANTS TO BE 6.5' BURY DEPTH UNLESS OTHERWISE NOTED.  
 10) ALL SEWER SERVICES TO BE INSTALLED AT MINIMUM PERMISSIBLE GRADE UNLESS OTHERWISE APPROVED BY THE CONSTRUCTION MANAGER.  
 11) HOMEOWNER SHALL DETERMINE THE SEWER SERVICE ELEVATION PRIOR TO BASEMENT EXCAVATION AND SETTING OF FINISHED FLOOR FOR HOUSE.  
 12) MODIFY WATER AND SEWER SERVICE TAP LOCATIONS TO AVOID DRIVEWAYS  
 13) BASED ON SOIL & GEOLOGY REPORT PREPARED BY RITCHEY ENGINEERS. LOTS 4-33 MAY REQUIRE FOUNDATION DRAINS THAT CAN CONNECT TO THE EXISTING 6" UNDERDRAIN IN THE ADJACENT ROADWAY.

**NOTE:**  
LOTS 1-3 WILL NOT REQUIRE UTILITY SERVICES.

**Unresolved:**  
Note and/or show the underdrain system outfall locations.



NO. REVISION		DATE	REVIEW:
1	REVISED PER COUNTY COMMENTS	9/21/23	PREPARED UNDER MY DIRECT SUPERVISION FOR AND ON BEHALF OF CLASSIC CONSULTING ENGINEERS AND SURVEYORS, LLC

48 HOURS BEFORE YOU DIG, CALL UTILITY LOCATORS <b>811</b> UTILITY NOTIFICATION CENTER OF COLORADO IT'S THE LAW	THE LOCATIONS OF EXISTING UNDERGROUND UTILITIES ARE SHOWN ON THIS PLAN. THE CONTRACTOR SHALL DETERMINE THE EXACT LOCATION OF ALL EXISTING UTILITIES BEFORE COMMENCING WORK. THE CONTRACTOR SHALL PRESERVE ANY AND ALL UNDERGROUND UTILITIES.
--	--

ROW/PROPERTY LINE	PROPOSED WATER MAIN	PROPOSED WATER VALVE	PROPOSED PLUG W/BLOWOFF ASST.	PROPOSED FIRE HYDRANT	EXISTING WATER MAIN	EXISTING WATER VALVE	EXISTING PLUG W/BLOWOFF ASST.	EXISTING FIRE HYDRANT
PROPOSED STORM SEWER	---	---	---	---	---	---	---	---
EXISTING STORM SEWER	---	---	---	---	---	---	---	---
PROPOSED SANITARY SEWER W/MANHOLE	---	---	---	---	---	---	---	---
EXISTING SANITARY SEWER W/MANHOLE	---	---	---	---	---	---	---	---
EXISTING FIBER OPTIC/CABLE	---	---	---	---	---	---	---	---
EXISTING ELECTRIC	---	---	---	---	---	---	---	---

LEGEND	
---	PROPOSED WATER MAIN
---	PROPOSED WATER VALVE
---	PROPOSED PLUG W/BLOWOFF ASST.
---	PROPOSED FIRE HYDRANT
---	EXISTING WATER MAIN
---	EXISTING WATER VALVE
---	EXISTING PLUG W/BLOWOFF ASST.
---	EXISTING FIRE HYDRANT

UNPLATTED FUTURE STERLING RANCH S20000-00-381	UNPLATTED FUTURE STERLING RANCH S20000-00-381
---	---

RETRAIT AT TIMBERIDGE FILING NO. 3 CONSTRUCTION PLANS UTILITY SERVICE PLAN	DESIGNED BY PRA SCALE	DATE 12-8-2022
CLASSIC CONSULTING	DRAWN BY PRA (H) 1" = 60'	SHEET 6 OF 7
	CHECKED BY (V) 1" = N/A	JOB NO. 1185.30