



THE DESIGN AND DETAILS DISCLOSED HEREIN ARE THE EXCLUSIVE PROPERTY OF DAN WINTER ARCHITECT AND SHALL NOT BE COPIED OR REPRODUCED IN WHOLE OR IN PART WITHOUT PRIOR WRITTEN CONSENT.

DAN WINTER, ARCHITECT

FREDDY'S FROZEN CUSTARD
7575 FALCON MARKETPLACE
FALCON, CO.

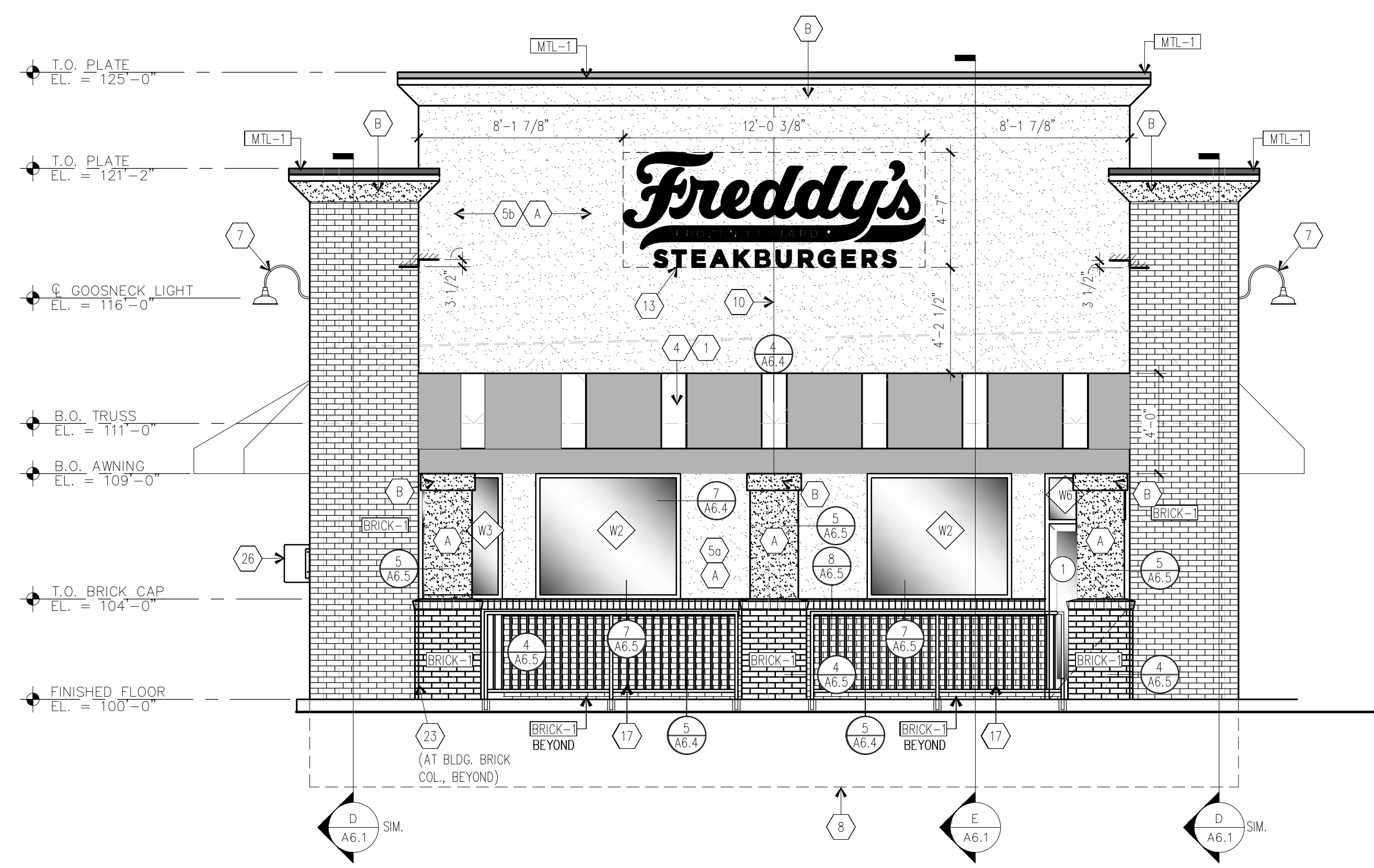
DAN WINTER ARCHITECT
1024 EAST FIRST STREET
WICHITA, KS. 67214
PH. 316-267-7142

EXTERIOR ELEVATIONS

DATE
12/30/2021

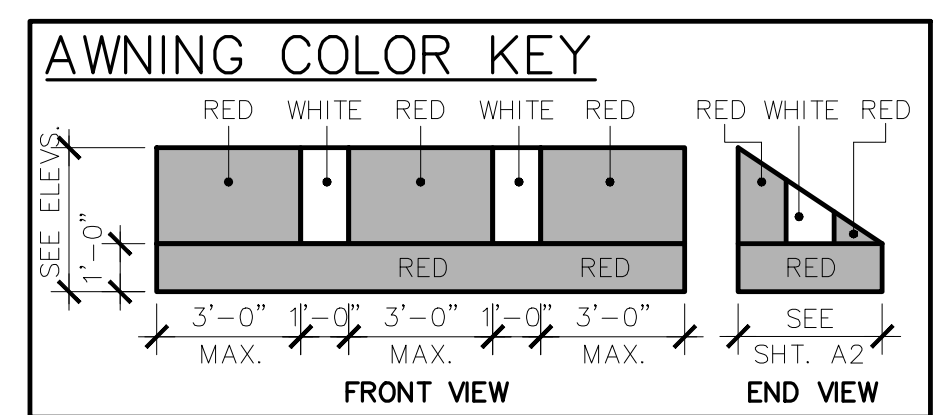
DRAWN BY:
RB
CHECKED BY:
DW

SHEET NO.
A3



(A) EAST ELEVATION
1/4" = 1'-0"

SIGNAGE AREA: EAST ELEVATION
FREDDY'S = 55 SQ.FT.
TOTAL = 55 SQ.FT.
EL PASO COUNTY, CO. GENERAL DEVELOPMENT STANDARDS CHAPTER 6.2.10(E)(g)



NOTE TO AWNING MANUFACTURER AND AWNING INSTALLER, AWNING FRAME TO BE ENGINEERED FOR APPROVAL BY LOCAL CODE AND DESIGNED TO MISS ALL BUILDING PROTRUSIONS NOT SHOWN ON PLANS.

CAULKING COLOR NOTE:
- AT EIFS / BRICK - MATCH EIFS
- AT BRICK / BRICK - MATCH BRICK
- AT EIFS / EIFS - MATCH EIFS
- AT EIFS / STOREFRONT - MATCH DARK BRONZE FRAME

EXTERIOR FINISH SCHEDULE						
SHERWIN WILLIAMS - PARENT NUMBER: BE37 FREDDY'S FROZEN CUSTARD						
EXTERIOR PAINT	DESCRIPTION	FINISH NO.	MFG.	MFG. NO.	COLOR	REMARKS
BUILDING WALLS	PAINT *	(A)	SHERWIN WILLIAMS	#7533	KHAKI SHADE	PAINT WITH TWO COATS ACRYLIC LATEX (SATIN)
BUILDING TRIM	PAINT *	(B)	SHERWIN WILLIAMS	#6126	FREDDY'S PEARL	PAINT WITH TWO COATS ACRYLIC LATEX (SATIN)
CONE	PAINT *	(C)	SHERWIN WILLIAMS	#17-143	BISCUIT FREDDY'S CONE	PAINT WITH TWO COATS ACRYLIC LATEX (SATIN)
CUSTARD	PAINT *	(D)	SHERWIN WILLIAMS	#17-313	FREDDY'S ICE WHITE	PAINT WITH TWO COATS ACRYLIC LATEX (SATIN)
BOLLARD	PAINT	(P3)	SHERWIN WILLIAMS	#17-572	FREDDY'S RED	PAINT WITH TWO COATS HIGH PERFORMANCE ACRYLIC (GLOSS)
GUARD RAIL	PAINT	(P4)	SHERWIN WILLIAMS	#B66B300	FREDDY'S JET BLACK	PAINT WITH TWO COATS HIGH PERFORMANCE ACRYLIC (GLOSS)
* NOTE: ALL EXTERIOR INSULATED FINISH SYSTEM (E.I.F.S.) IS PRE-MIXED WITH SHERWIN-WILLIAMS COLORS AS SPEC'D. ABOVE. NO PAINTING OF BUILDING E.I.F.S. (INCL. CONE) IS REQUIRED.						
EXTERIOR BRICK	DESCRIPTION	FINISH NO.	MFG.	MFG. NO.	COLOR & TEXTURE	REMARKS
BUILDING BRICK (OPT. #1)	BRICK MODULAR (OPT. #1)	(BRICK-1)	MERIDIAN BRICK	COLUMBIA ARCHITECTURAL SERIES	WAVERLY MILLS	GROUT COLOR - GRAY
BUILDING BRICK (OPT. #2)	BRICK MODULAR (OPT. #2)	(BRICK-2)	THE LAKEWOOD BRICK COMPANY	ACME BRICK CO. P.316-941-3994	WELLSHIRE	GROUT COLOR - GRAY MODULAR & TIN - MADE RUMBLER
METAL COPING	DESCRIPTION	FINISH NO.	MFG.	MFG. NO.	COLOR	REMARKS
BUILDING COPING	COPING	(MTL-1)	DUROLAST		BRITE RED	2 PC COMPRESSION COPING CAP. SLOPE TOWARDS ROOF.

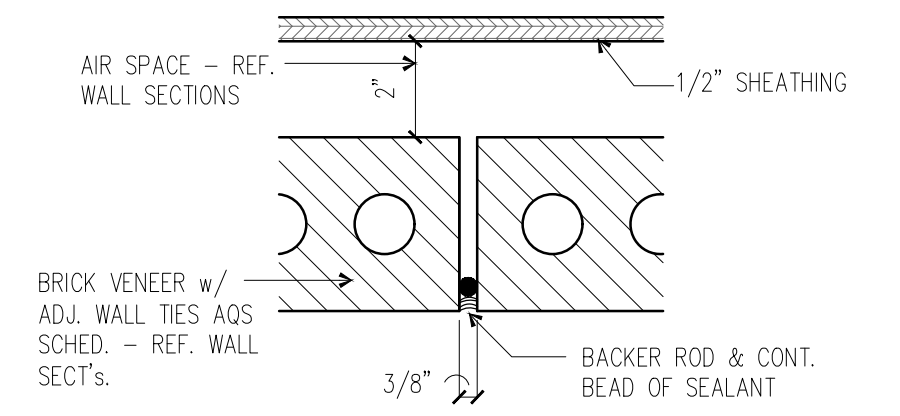
GENERAL NOTES:

SIGNS SHOWN ON THESE ELEVATIONS ARE FOR CODE REVIEW PURPOSES ONLY. THESE SIGN ELEVATIONS ARE NOT TO BE USED AS OR CONSTRUED AS SHOP DRAWINGS FOR SIGN CONSTRUCTION. SIGN SHOP DRAWINGS ARE PRODUCED BY THE SIGN MANUFACTURER FOR REVIEW AND APPROVAL BY THE OWNER.

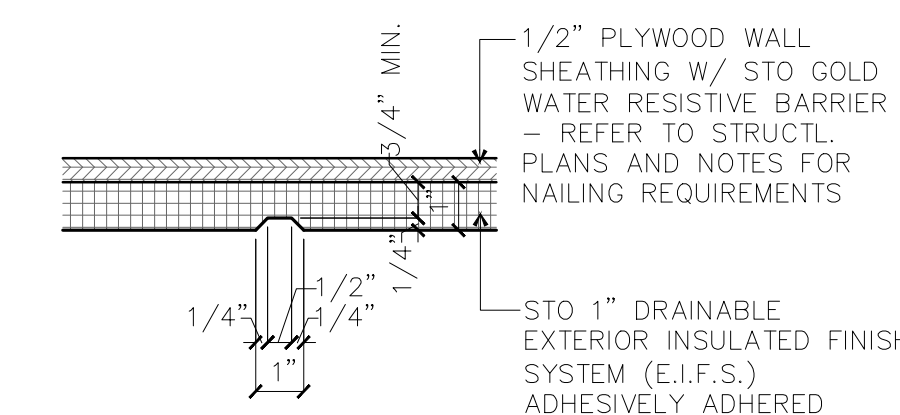
NOTE TO AWNING MANUFACTURER AND AWNING INSTALLER, AWNING FRAME TO BE ENGINEERED FOR APPROVAL BY LOCAL CODE AND DESIGNED TO MISS ALL BUILDING PROTRUSIONS NOT SHOWN ON PLANS.

ELEVATION KEY NOTES:

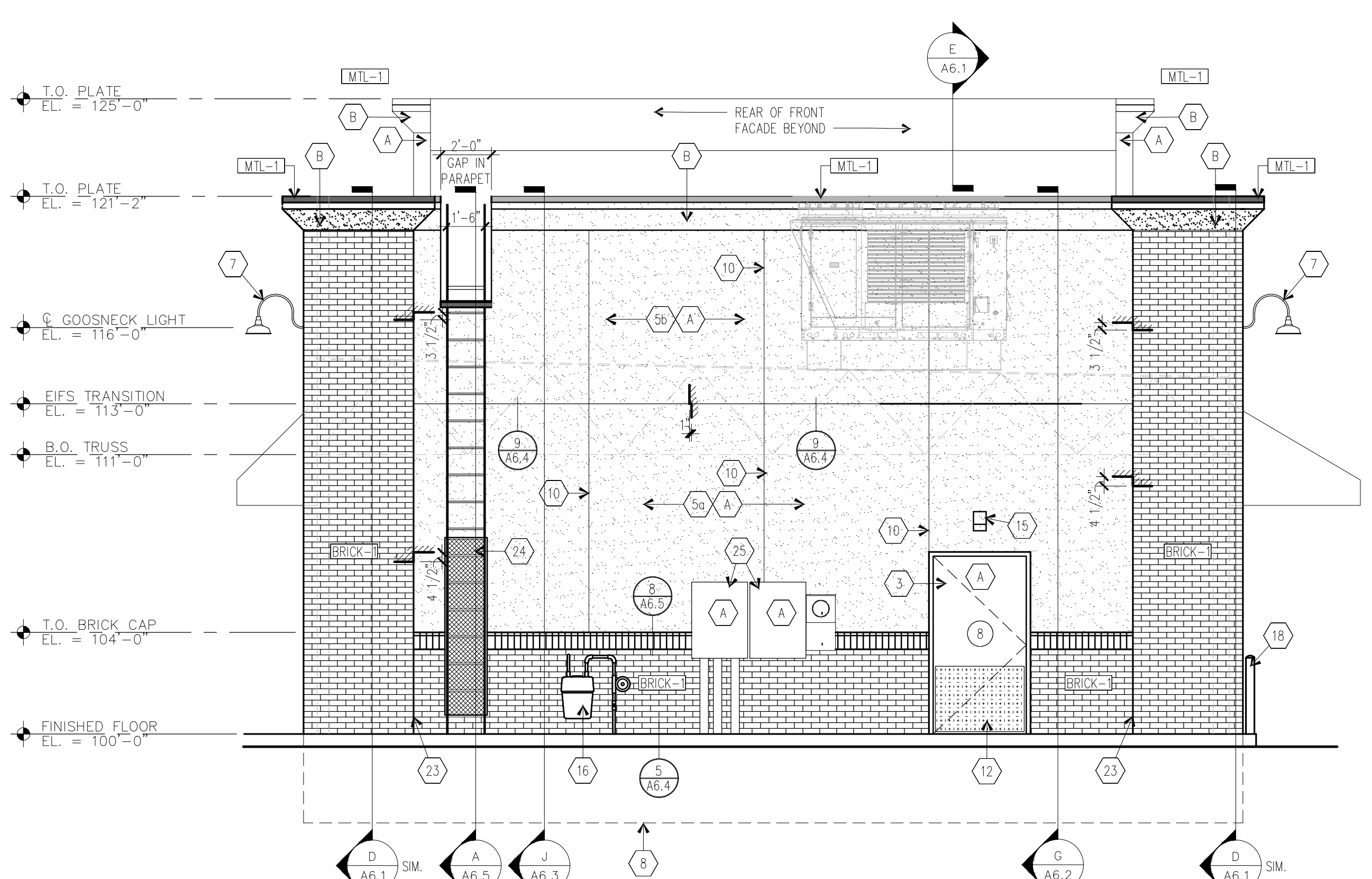
- 1 (2)-TUBE, STRIP LED FIXTURES WITH CLEAR LENS COVERS TO BACK LIGHT AWNINGS, TYP. SUPPLIED BY OWNER, WREED & INSTALLED BY ELEC. CONTR.
- 2 OVERFLOW DRAIN WITH LAMBS TONGUE
- 3 HOLLOW METAL EXIT DR. REF. DOOR SCHED.
- 4 EXTERIOR VINYL AWNING & ALUM FRAME BY OWNER AND AWNING MANUF. TYP. REF. AWNING COLOR KEY SHT'S A3 & A4
- 5a STO 1 1/2" DRAINABLE EXTERIOR INSULATED FINISH SYSTEM (E.I.F.S.) ADHESIVELY ADHERED "SAND PEBBLE FIN."
- 5b STO 2 1/2" DRAINABLE EXTERIOR INSULATED FINISH SYSTEM (E.I.F.S.) ADHESIVELY ADHERED "SAND PEBBLE FIN."
- 6 NOT USED
- 7 GOOSENECK LIGHT FIXTURE 'RED'
- 8 CONCRETE FOUNDATION REFER TO STRUCTL. PLANS FOR SIZE AND DETAILS
- 9 NOT USED
- 10 EIFS CONTROL JOINT REF. DETAIL 4/A3
- 11 NOT USED
- 12 42"x 30" DIAMOND TREAD PLATE
- 13 SIGNAGE BY OWNER - INSTALLATION BY SIGNAGE MANUF., ELEC. CONNECTIONS BY G.C.
- 14 NOT USED
- 15 WALL PACK LIGHT FIXTURE. ABOVE REAR DOOR - REF. ELEC. PLANS
- 16 GAS METER PTD. VERIFY LOC.
- 17 REFER TO DETAIL 5/A3 FOR GUARD RAIL DETAILS. (IF REQUIRED, NOT SHOWN ON PROTOTYPE)
- 18 4" CONC. FILLED PIPE BOLLARD, FREDDY'S RED
- 19 NOT USED
- 20 READY ACCESS MODEL AA300 CURTAIN - 275 PASS-THRU AIR CURTAIN SYSTEM W/ STATUARY BRONZE FIN. ELECTRICAL CONTRACTOR TO VERIFY ELECTRICAL REQ'TS. SEE MANUFACTURER FOR APPROPRIATE AIR CURTAIN CONFIGURATION BASED ON GEOGRAPHY.
- 21 READY ACCESS MODEL 275 WINDOW/ MANUAL SINGLE PANEL SLIDER, 48"W x 60" H. R.O. (INCL. AIR CURTAIN ABOVE). MANUAL OPEN/ ELECTRONIC RELEASE - OPENS ON SIDE THE CAR APPROACHES. BRONZE FINISH - PROVIDED BY & INSTALLED BY G.C.
- 22 RECESSED KNOX BOX
- 23 BRICK EXPANSION JOINT REF. DETAIL 3/A3
- 24 STEEL MESH HINGED GATE (W/LOCK) TO ENCLOSE BOTTOM OF ACCESS LADDER. (PAINT TO MATCH EIFS).
- 25 ELECTRICAL CT CABINET & DISCONNECT - PTD., VERIFY LOCATION
- 26 FREDDY'S PEDESTRIAN CROSSING SIGN. BOTTOM OF SIGN @ 56" A.F.F.
- 27 NOT USED



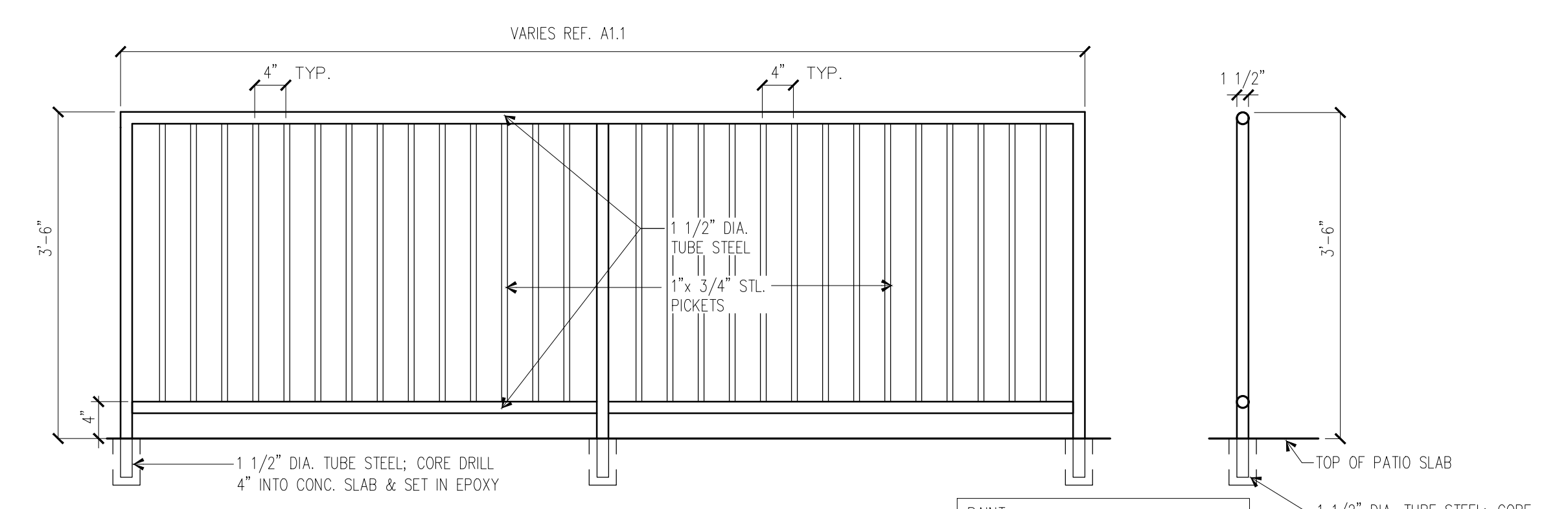
(3) BRICK CONTROL JOINT
3" = 1'-0" MARKED CJ ON EXTERIOR ELEVATIONS SHEETS A3 & A4



(4) EIFS CONTROL JOINT
3" = 1'-0" MARKED CJ ON EXTERIOR ELEVATIONS SHEETS A3 & A4



(B) WEST ELEVATION
1/4" = 1'-0"



(5) PATIO GUARD RAIL SECTION
3/4" = 1'-0"

PAINT: ALL METAL RAILINGS TO BE PAINTED BLACK (P4 - DIRECT TO METAL PAINT) PER FINISH SCHED. ARCH. SHEET A1.2



THE DESIGN AND DETAILS DISCLOSED HEREIN ARE THE EXCLUSIVE PROPERTY OF DAN WINTER ARCHITECT AND SHALL NOT BE COPIED OR REPRODUCED IN WHOLE OR IN PART WITHOUT PRIOR WRITTEN CONSENT.

DAN WINTER, ARCHITECT

FREDDY'S FROZEN CUSTARD
7575 FALCON MARKETPLACE
FALCON, CO.

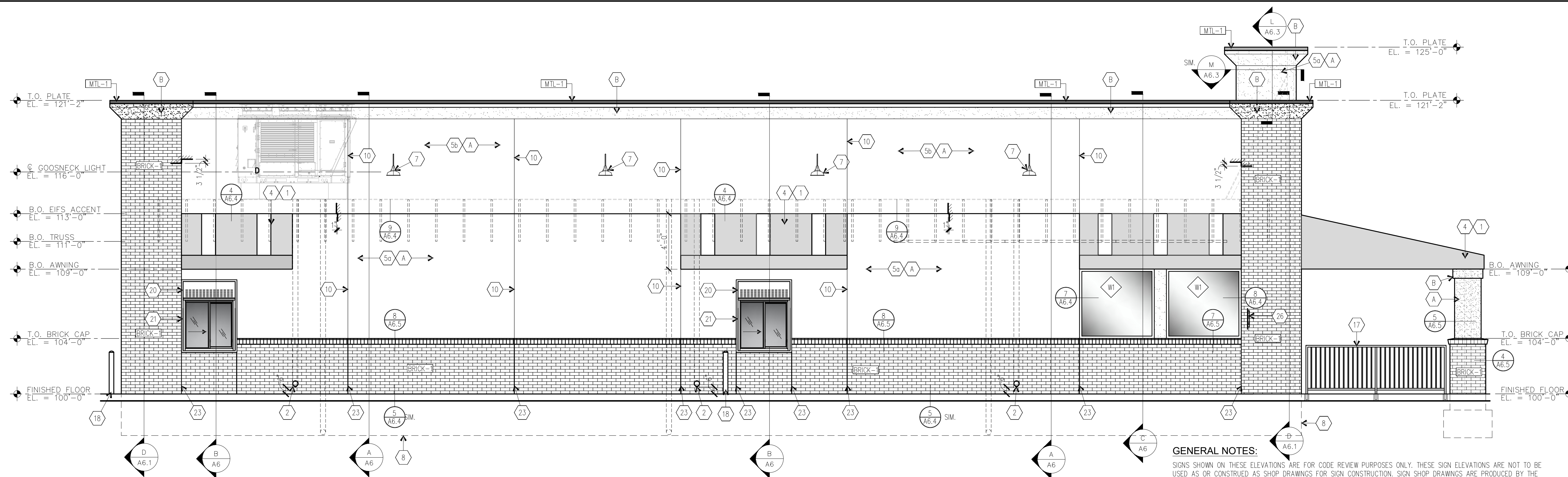
DAN WINTER ARCHITECT
1024 EAST FIRST STREET
WICHITA, KS. 67214
PH. 316-267-7142

EXTERIOR ELEVATIONS

DATE
12/30/2021

DRAWN BY:
RB
CHECKED BY:
DW

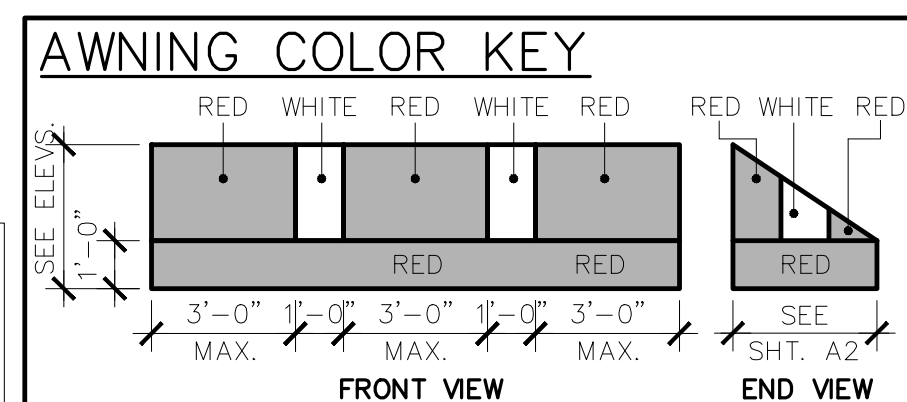
SHEET NO.
A4



(A) SOUTH ELEVATION
1/4" = 1'-0"

NOTE TO AWNING MANUFACTURER AND AWNING INSTALLER: AWNING FRAME TO BE ENGINEERED FOR APPROVAL BY LOCAL CODE AND DESIGNED TO MISS ALL BUILDING PROTRUSIONS NOT SHOWN ON PLANS.

CAULKING COLOR NOTE:
- AT EIFS / BRICK - MATCH EIFS
- AT BRICK / BRICK - MATCH BRICK
- AT EIFS / EIFS - MATCH EIFS
- AT EIFS / STOREFRONT - MATCH DARK BRONZE FRAME



EXTERIOR FINISH SCHEDULE						
SHERWIN WILLIAMS - PARENT NUMBER: BE37 FREDDY'S FROZEN CUSTARD						
EXTERIOR PAINT	DESCRIPTION	FINISH NO.	MFGR.	MFGR. NO.	COLOR	REMARKS
BUILDING WALLS	PAINT *	(A)	SHERWIN WILLIAMS	#7533	KHAKI SHADE	PAINT WITH TWO COATS ACRYLIC LATEX (SATIN)
BUILDING TRIM	PAINT *	(B)	SHERWIN WILLIAMS	#6126	FREDDY'S PEARL	PAINT WITH TWO COATS ACRYLIC LATEX (SATIN)
CONE	PAINT *	(C)	SHERWIN WILLIAMS	#17-143	BISCUIT FREDDY'S CONE	PAINT WITH TWO COATS ACRYLIC LATEX (SATIN)
CUSTARD	PAINT *	(D)	SHERWIN WILLIAMS	#17-313	FREDDY'S ICE WHITE	PAINT WITH TWO COATS ACRYLIC LATEX (SATIN)
BOLLARD	PAINT	(P3)	SHERWIN WILLIAMS	#17-572	FREDDY'S RED	PAINT WITH TWO COATS HIGH PERFORMANCE ACRYLIC (GLOSS)
GUARD RAIL	PAINT	(P4)	SHERWIN WILLIAMS	#B66B300	FREDDY'S JET BLACK	PAINT WITH TWO COATS HIGH PERFORMANCE ACRYLIC (GLOSS)
* NOTE: ALL EXTERIOR INSULATED FINISH SYSTEM (E.I.F.S.) IS PRE-MIXED WITH SHERWIN-WILLIAMS COLORS AS SPEC'D. ABOVE. NO PAINTING OF BUILDING E.I.F.S. (INCL. CONE) IS REQUIRED.						
EXTERIOR BRICK	DESCRIPTION	FINISH NO.	MFGR.	COLOR & TEXTURE	REMARKS	
BUILDING BRICK (OPT. #1)	BRICK MODULAR (OPT. #1)	(BRICK-1)	MERIDIAN BRICK	COLUMBIA ARCHITECTURAL SERIES	WAVERLY MILLS	GROUT COLOR - GRAY
BUILDING BRICK (OPT. #2)	BRICK MODULAR (OPT. #2)	(BRICK-2)	THE LAKEWOOD BRICK COMPANY	ACME BRICK CO. P.316-941-3594	WELLSHIRE	GROUT COLOR - GRAY MODULAR & TIN - MADE RUMBLD
METAL COPING	DESCRIPTION	FINISH NO.	COLOR	REMARKS		
BUILDING COPING	COPING	(MTL-1)	DUROLAST	BRITE RED	2 PC COMPRESSION COPING CAP. SLOPE TOWARDS ROOF.	

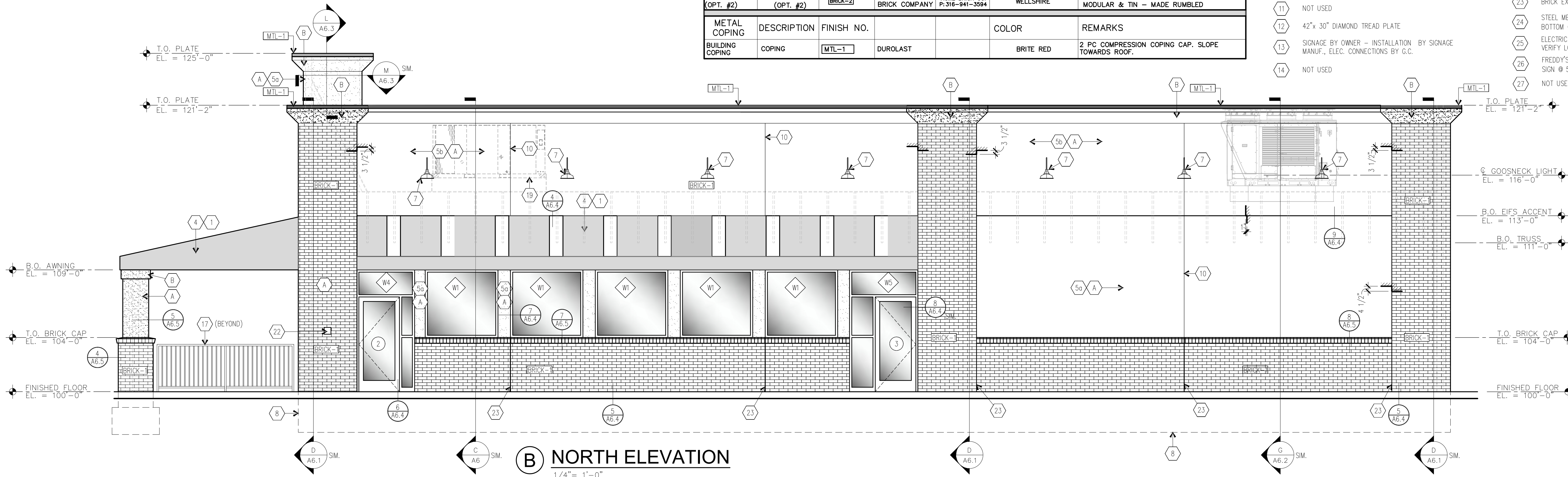
GENERAL NOTES:

SIGNS SHOWN ON THESE ELEVATIONS ARE FOR CODE REVIEW PURPOSES ONLY. THESE SIGN ELEVATIONS ARE NOT TO BE USED AS OR CONSTRUED AS SHOP DRAWINGS FOR SIGN CONSTRUCTION. SIGN SHOP DRAWINGS ARE PRODUCED BY THE SIGN MANUFACTURER FOR REVIEW AND APPROVAL BY THE OWNER.

NOTE TO AWNING MANUFACTURER AND AWNING INSTALLER: AWNING FRAME TO BE ENGINEERED FOR APPROVAL BY LOCAL CODE AND DESIGNED TO MISS ALL BUILDING PROTRUSIONS NOT SHOWN ON PLANS.

ELEVATION KEY NOTES:

- 1 (2)-TUBE, STRIP LED FIXTURES WITH CLEAR LENS COVERS TO BACK LIGHT AWNINGS. TYP. SUPPLIED BY OWNER. WIRED & INSTALLED BY ELEC. CONTR.
- 2 OVERFLOW DRAIN WITH LAMBS TONGUE
- 3 HOLLOW METAL EXIT DR. REF. DOOR SCHED.
- 4 EXTERIOR VINYL AWNING & ALUM FRAME BY OWNER AND AWNING MANUF. TYP. REF. AWNING COLOR KEY SHTS A3 & A4
- 5a STO 1 1/2" DRAINABLE EXTERIOR INSULATED FINISH SYSTEM (E.I.F.S.) ADHESIVELY ADHERED "SAND PEBBLE FIN."
- 5b STO 2 1/2" DRAINABLE EXTERIOR INSULATED FINISH SYSTEM (E.I.F.S.) ADHESIVELY ADHERED "SAND PEBBLE FIN."
- 6 NOT USED
- 7 GOOSENECK LIGHT FIXTURE 'RED'
- 8 CONCRETE FOUNDATION REFER TO STRUCTL. PLANS FOR SIZE AND DETAILS
- 9 NOT USED
- 10 EIFS CONTROL JOINT REF. DETAIL 4/A3
- 11 NOT USED
- 12 42"x 30" DIAMOND TREAD PLATE
- 13 SIGNAGE BY OWNER - INSTALLATION BY SIGNAGE MANUF., ELEC. CONNECTIONS BY G.C.
- 14 NOT USED
- 15 WALL PACK LIGHT FIXTURE. ABOVE REAR DOOR - REF. ELEC. PLANS
- 16 GAS METER PTD. VERIFY LOC.
- 17 REFER TO DETAIL 5/A3 FOR GUARD RAIL DETAILS. (IF REQUIRED, NOT SHOWN ON PROTOTYPE)
- 18 4" CONC. FILLED PIPE BOLLARD. FREDDY'S RED
- 19 NOT USED
- 20 READY ACCESS MODEL AA300 CURTAIN - 275 PASS-THRU AIR CURTAIN SYSTEM W/ STATUARY BRONZE FIN. ELECTRICAL CONTRACTOR TO VERIFY ELECTRICAL REQ'MTS. SEE MANUFACTURER FOR APPROPRIATE AIR CURTAIN CONFIGURATION BASED ON GEOGRAPHY.
- 21 READY ACCESS MODEL 275 WINDOW/ MANUAL SINGLE PANEL SLIDER, 48"W x 60" H. R.O. (INCL. AIR CURTAIN ABOVE). MANUAL OPEN/ ELECTRONIC RELEASE - OPENS ON SIDE THE CAR APPROACHES. BRONZE FINISH - PROVIDED BY & INSTALLED BY G.C.
- 22 RECESSED KNIX BOX
- 23 BRICK EXPANSION JOINT REF. DETAIL 3/A3
- 24 STEEL MESH HINGED GATE (W/LOCK) TO ENCLOSE BOTTOM OF ACCESS LADDER. (PAINT TO MATCH EIFS).
- 25 ELECTRICAL CT CABINET & DISCONNECT - PTD., VERIFY LOCATION
- 26 FREDDY'S PEDESTRIAN CROSSING SIGN. BOTTOM OF SIGN @ 56" A.F.F.
- 27 NOT USED



(B) NORTH ELEVATION
1/4" = 1'-0"