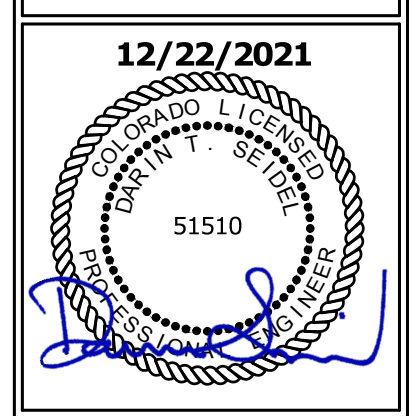




FREDDY'S FROZEN CUSTARD
7575 FALCON MARKETPLACE
FALCON, CO.



DAN WINTER
ARCHITECT
 1024 EAST
 FIRST STREET
 WICHITA, KS.
 67214
 PH. 316-267-7142

ELECTRICAL
 SITE PLAN

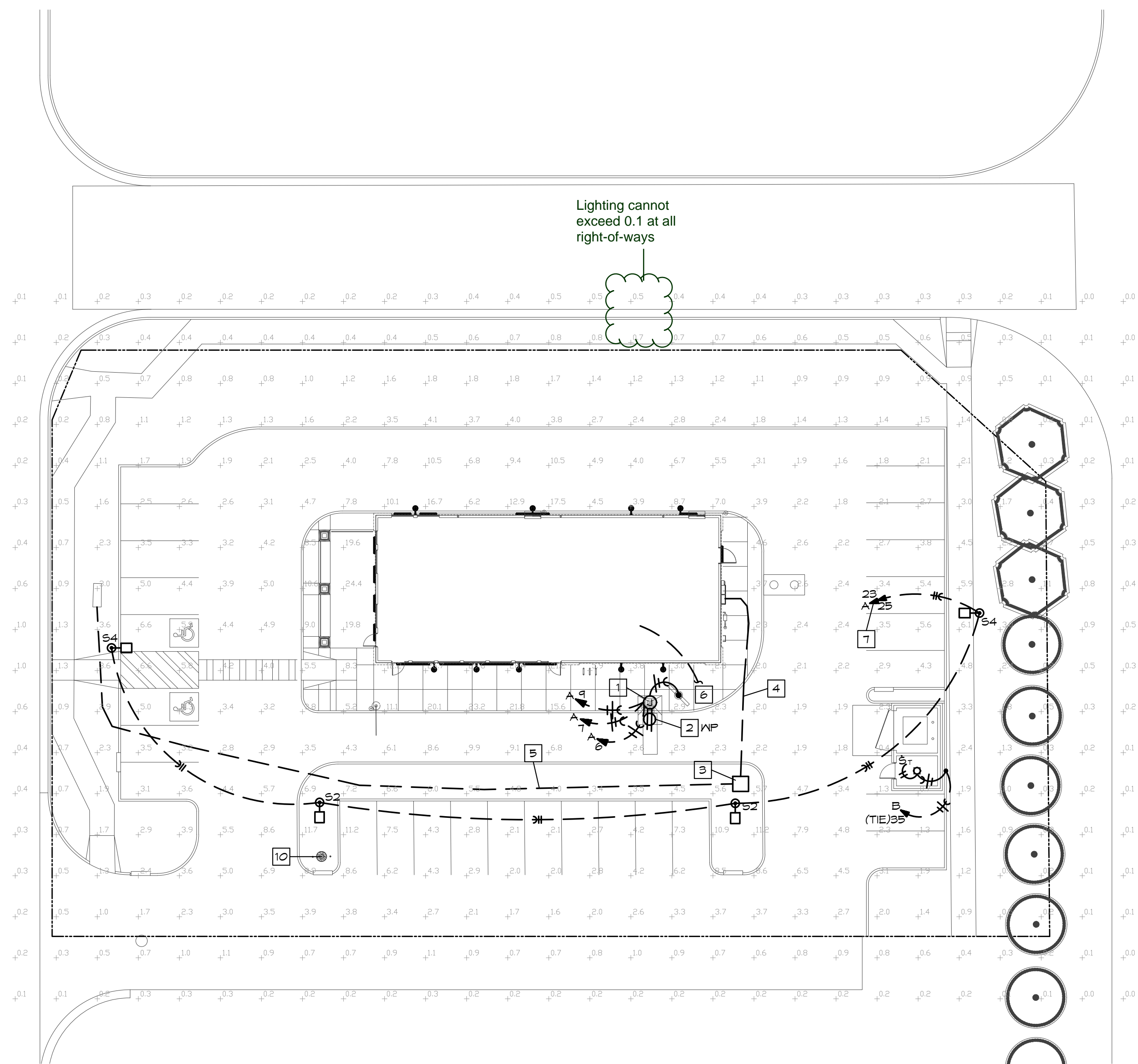
DATE
12/22/2021

DRAWN BY:
SM/MS
 CHECKED BY:
DS/EK

SHEET NO.
E-5

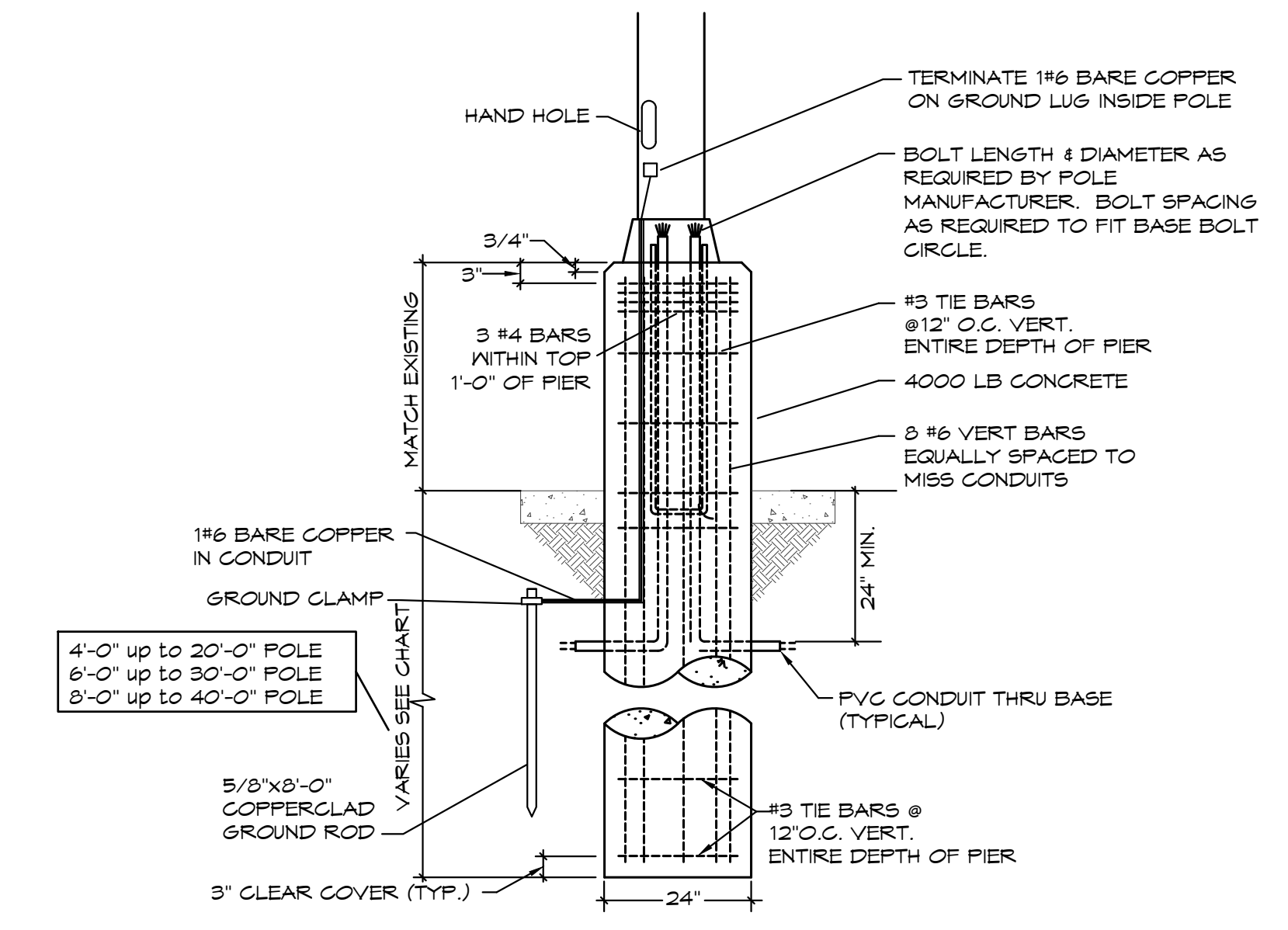
SITE ELECTRICAL PLAN NOTES

- 1 CONNECT TO MENU BOARD AND PRE-SELL BOARD PER MANUFACTURER'S INSTRUCTIONS. ONE CIRCUIT THRU TIMELOCK AND ONE CIRCUIT UNSWITCHED FOR SPEAKER POST. REFER TO KEYNOTE 24 ON SHEET E1.
- 2 RECEPTACLE FOR OCB. MOUNT WEATHERPROOF DUPLEX INSIDE POST AT +24". CONDUIT TO BE RUN INSIDE POST.
- 3 PROPOSED PAD-MOUNTED TRANSFORMER - SEE ELECTRICAL RISER DIAGRAM ON SHEET E4. COORDINATE EXACT LOCATION WITH LOCAL UTILITY COMPANY.
- 4 SECONDARY CONDUCTORS FROM TRANSFORMER. SEE RISER DIAGRAM ON SHEET E4.
- 5 4"Ø FOR PRIMARY CABLES BY UTILITY COMPANY. COORDINATE ROUTING & TERMINATION POINT WITH LOCAL SERVICE PROVIDER.
- 6 (2)2"Ø TO PROPERTY FOR TELEPHONE SERVICE. TERMINATE AT LOCATION DIRECTED BY LOCAL SERVICE PROVIDER.
- 7 ROUTE CIRCUIT TO PANEL INDICATED VIA EXTERIOR LIGHTING CONTROLS. SEE DETAIL ON SHEET E2.
- 8 NOT USED.
- 9 NOT USED.
- 10 LOCATION OF FLAG POLE AND IN-GROUND LIGHTING. REFER TO SHEET E2 FOR LIGHTING CIRCUITING AND CONTROLS.



ELECTRICAL SITE PLAN
 SCALE: 1"=20'
 NORTH

STATISTICAL AREA SUMMARY					
AREA	AVG FC	MAX FC	MIN FC	MAX/MIN	AVG/MIN
PARKING	4.1	11.8	0.6	19.7:1	6.9:1



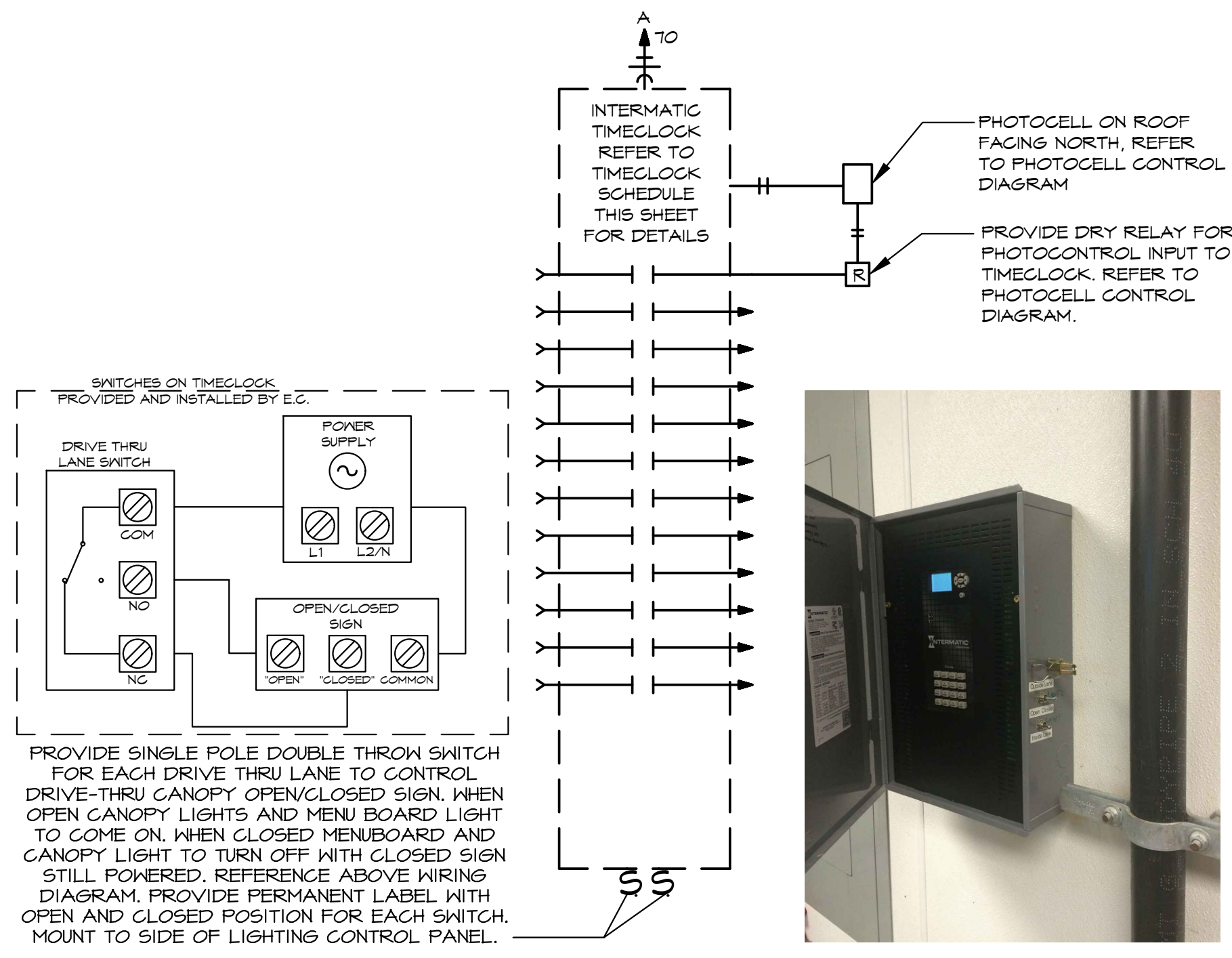
POLE FOUNDATION DETAIL
 SCALE: NONE

BC PROJECT #: 21959
This drawing has been prepared by the Engineer, or under his supervision. This drawing is provided as an instrument of service by the Designer/Engineer and is intended for use on the project only. Pursuant to the Architecture/Engineering/Professional Act of 1988, all drawings, specifications, plans and designs, including the overall form, arrangement and composition of spaces and elements appearing hereon, constitute the original, copyrighted work of the Designer/Engineer. Any reproduction, use, or disclosure of information contained herein without prior written consent of the Engineer is strictly prohibited. © 2021 BC Engineers, Inc.

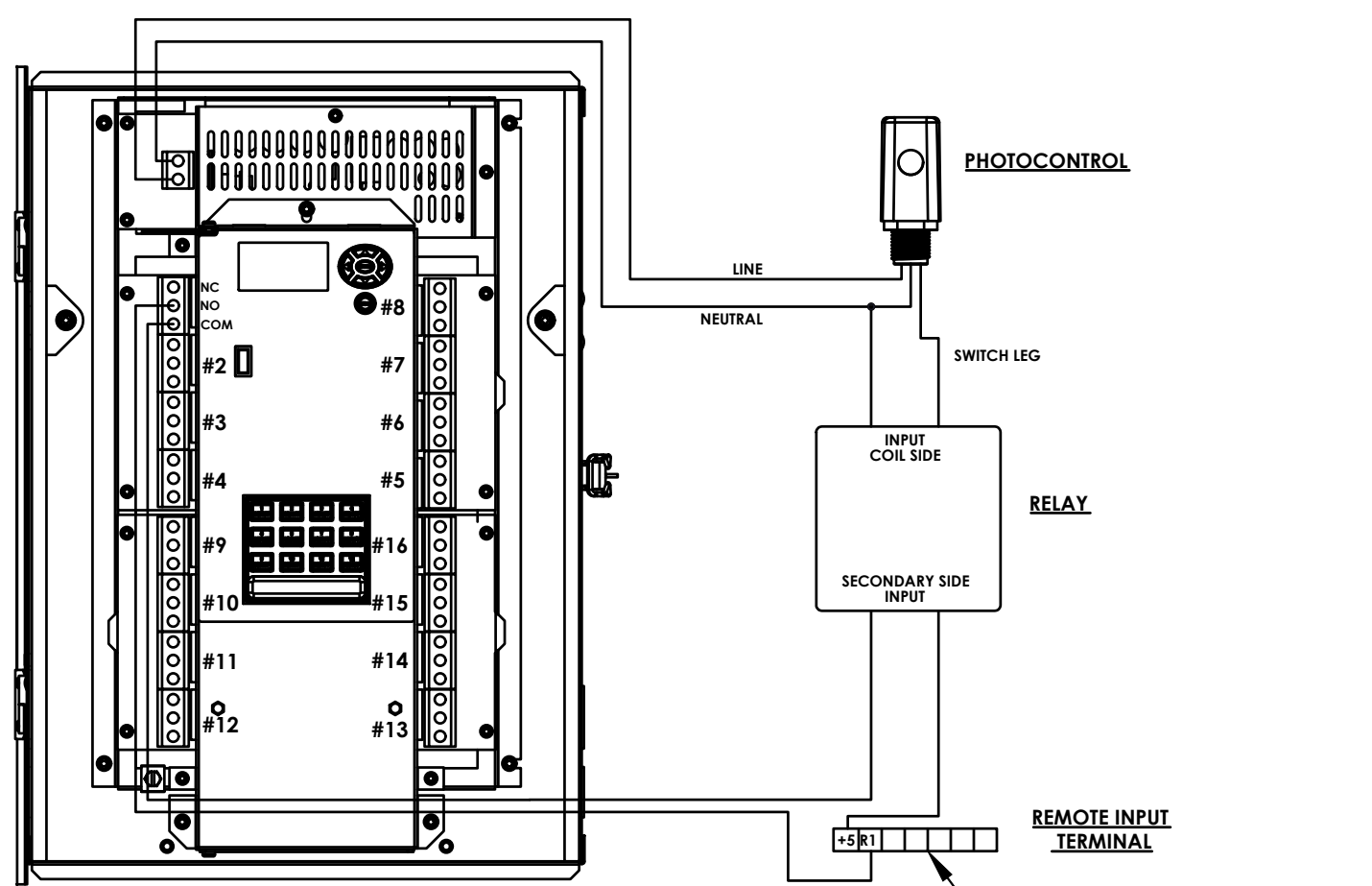
BC ENGINEERS
INCORPORATED
 5720 Reeder Shawnee, Ks. 66203 (913)262-1772

INTERMATIC TIMELOCK SCHEDULE - MODEL: #ET91215CR									
CONTACT NAME:		ROBERT LUNA		TIMELOCK POWER SOURCE					
CONTACT NUMBER:		815-529-0020		BREAKER PANEL NAME:		PANEL A			
CONTACT E-MAIL:		RLUNA@INTERMATIC.COM		CIRCUIT NUMBER:		70			
TIME CLOCK SEQUENCE OF OPERATION									
RELAY NO.	CIRCUIT NO.	CONTROLLED AREA	ON TIME	OFF TIME	RELAY NO.	CIRCUIT NO.	CONTROLLED AREA	ON TIME	OFF TIME
1	-	PHOTOCELL	-	-	8	A-23			
2	A-31	SIGN #1	30 MINUTES BEFORE SUNSET	10:15PM SU-TH 11:15PM FR-SA	7	A-25	SITE LIGHTING	30 MINUTES BEFORE SUNSET	12:00AM SU-TH 1:00AM FOLLOWING DAY FR-SA
3	B-36	BUILDING EXTERIOR LIGHTING	30 MINUTES BEFORE SUNSET	11:00PM SU-TH 12:00AM FR-SA	6	B-37	KITCHEN LIGHTING	8:00AM	12:00AM SU-TH 1:00AM FOLLOWING DAY FR-SA
4	B-35	DINING LIGHTING	9:00AM	12:00AM SU-TH 1:00AM FOLLOWING DAY FR-SA	5	A-7	DRIVE THRU MENU 1	30 MINUTES BEFORE SUNSET	10:15PM SU-TH 11:15PM FR-SA
9	A-24	WALK-IN COOLER/FREEZER LIGHTING	8:00AM	12:00AM SU-TH 1:00AM FOLLOWING DAY FR-SA	16	---	SPACE	---	---
10	---	SPARE	---	---	15	---	SPACE	---	---
11	---	SPARE	---	---	14	---	SPACE	---	---
12	---	SPARE	---	---	13	---	SPACE	---	---

INTERMATIC TIMELOCK PROVIDED BY ACCENT LIGHTING
CONTACT PAUL GRAF @ 316-636-1278 WITH PROCUREMENT QUESTIONS.
FOR PROGRAMING QUESTIONS PLEASE CONTACT ROBERT LUNA, CONTACT INFORMATION ABOVE.
FOR IMMEDIATE ASSISTANCE CONTACT TECH SUPPORT @ 1-800-391-4555



LIGHTS/SIGNAGE CONTROL DIAGRAM
SCALE: NONE



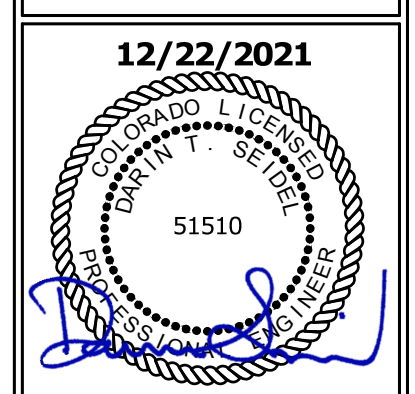
PHOTOCELL CONTROL DIAGRAM
SCALE: NONE

LIGHT FIXTURE SCHEDULE					
MARK NO.	MANUFACTURER & CATALOG NUMBER	VOLTS WATTS	LAMPS	DESCRIPTION	IMAGE
A	JUNO 52X4BL-5540U-VH3	120 54	INCL LED	2X4 LED GRID BASKET TROFFER WITH OPAL LENS WITH LED DRIVE CAPABLE OF PRODUCING 5500 LUMENS AND 4100K.	
A2	JUNO 52X2BL-3940U-VH3	120 36	INCL LED	2X2 LED GRID BASKET TROFFER WITH OPAL LENS WITH LED DRIVE CAPABLE OF PRODUCING 3900 LUMENS AND 4100K.	
B,C	JUNO R532-R-VH ON TX-VH SERIES TRACK	120 14	1-14W LED PAR30	TRACK MOUNTED GIMBAL-RING LAMPHOLDER WITH TRIM RING FOR (1) 14W PAR30 LED LAMP MOUNTED ON SINGLE CIRCUIT TRACK. LENGTH AS INDICATED ON PLANS. PROVIDE ALL NECESSARY ENDS, FEEDS, ETC FOR COMPLETE INSTALLATION. VERIFY FINISH WITH ARCHITECT.	
D4	LITHONIA GLX-L48-1000LM-SEF-RDL-MVOLT-6Z10-40K-80CRI-VH	120 49	INCL LED 1000 LUMENS 4000K	4FT LED SURFACE MOUNTED ANNING LIGHT WITH WHITE LENS AND WHITE FINISH.	
D8	LITHONIA GLX-L46-14000LM-SEF-RDL-MVOLT-6Z10-40K-80CRI-VH	120 49	INCL LED 14000 LUMENS 4000K	LED SURFACE MOUNTED ANNING LIGHT WITH WHITE LENS AND WHITE FINISH.	
F	ACCENT LIGHTING 142-WB16-43-BLC V/ JUNO T31WH TRACK ADAPTER WHERE INDICATED ON TRACK	120 14	1-14W CF/ SILVER BOWL	16" RLM SHADE FOR (1) 14W SELF-BALLASTED SILVER-BOWL MEDIUM BASE COMPACT FLUORESCENT LAMP. MOUNT AT 60" AFF ABOVE BOOTHS AND 12" AFF ABOVE HIGH TOP TABLES.	
G	JUNO I22LED-35K-24W-VH	120 12	INCL LED	6"Ø RECESSED DOWNLIGHT WITH BLACK BAFFLE FOR (1) 12W LED LIGHT ENGINE	
H	ACCENT LIGHTING WB12-43-LEDP-E3A	120 15	INCL LED	WALL MOUNTED GOOSENECK 6"Ø DOME WITH RED FINISH FOR (1) 15W LED LIGHT ENGINE	
L	TRACE LITE WL22-4-K-BR-PC	120 25	INCL LED	WALL MOUNTED AREA LIGHT WITH (1) 25W LED LIGHT ENGINE WITH PHOTOCELL	
O	KICHLER 16204AZT42 STAKE 15276BK SURFACE FLANGE 15601BKT	120 29	INCL LED	LED ACCENT FIXTURE, BRONZE WITH 10 DEGREE SPOT BEAM SPREAD. PROVIDE WITH 120V BLACK POWER POST.	
P	ACCULITE T3-5311L2-3K-FL-B2P	120 18	INCL LED	LED SIGN LIGHT LED GOOSENECK FOR FREDDY'S CUSTARD CONE. AIM AT CUSTARD SCOOP FOR MAXIMUM COVERAGE.	
S2	LITHONIA RSX2-LED-P2-40K-R2-MVOLT-SPA-DPEBXD D5930-400Q200-DA-FP-DB-FBC-AB	UNV 114	LED INCL	POLE MOUNTED AREA LIGHT WITH INTEGRAL LED LIGHT ENGINE AND DRIVER - TYPE 2 DISTRIBUTION. MOUNT ON 22' POLE WITH 3' HIGH CONCRETE BASE (25' TOTAL MOUNTING HEIGHT). BRONZE FINISH	
S4	LITHONIA RSX2-LED-P4-40K-R4-MVOLT-SPA-DPEBXD D5930-400Q200-DA-FP-DB-FBC-AB	UNV 187	LED INCL	POLE MOUNTED AREA LIGHT WITH INTEGRAL LED LIGHT ENGINE AND DRIVER - TYPE 4 DISTRIBUTION. MOUNT ON 22' POLE WITH 3' HIGH CONCRETE BASE (25' TOTAL MOUNTING HEIGHT). BRONZE FINISH	
NAVILITE N1LPH		120 2.0	INCL	EMERGENCY LIGHT WITH TWIN ADJUSTABLE LED HEADS AND SEALED NiCAD BATTERY. MOUNT AT 10'-6" TO CLEAR OBSTACLES.	
NAVILITE NXPGL-3-R-VH		120 3.1	INCL	COMBO EMERGENCY/EXIT LIGHT WITH LED LAMPS, RED LETTERS ON WHITE BACKGROUND, UNIVERSAL MOUNT, BATTERY BACKUP AND TWIN EMERGENCY HEADS	
NAVILITE NXPGL-3-R-VH-HO V/ NRL-VP-2-SY		120 4.0	INCL	COMBO EMERGENCY/EXIT LIGHT WITH LED LAMPS, RED LETTERS ON WHITE BACKGROUND, UNIVERSAL MOUNT, HIGH CAPACITY BATTERY BACKUP, TWIN EMERGENCY HEADS AND WEATHERPROOF EXTERIOR REMOTE HEAD	

ALL NEW LIGHT FIXTURES ARE TO BE PROVIDED BY OWNER THROUGH ACCENT LIGHTING. CONTACT PAUL GRAF @ 316-636-1278 WITH QUESTIONS. ALL LAMPS TO BE SUPPLIED BY OWNER.
TYPE 'F' FIXTURES TO BE CENTERED OVER BOOTH.



FREDDY'S FROZEN CUSTARD
7575 FALCON MARKETPLACE
FALCON, CO.



DAN WINTER ARCHITECT
1024 EAST FIRST STREET
WICHITA, KS. 67214
PH. 316-267-7142

LIGHTING DETAILS

DATE
12/22/2021

DRAWN BY:
SM/MS
CHECKED BY:
DS/EK

SHEET NO.
E-2.1

BC PROJECT #: 21959
This drawing has been prepared by the Engineer, or under his supervision. This drawing is provided as an instrument of service by the Design Engineer and is intended for use on the project only. Pursuant to the Architecture Practice Act of 1988, all drawings, specifications, plans and designs, including the overall form, arrangement and composition of space and elements appearing hereon, constitute the original, copyrighted work of the Design Engineer. Any reproduction, use or disclosure of information contained herein without prior written consent of the Engineer is strictly prohibited. © 2021 BC Engineers, Inc.

BC ENGINEERS INCORPORATED
5720 Reeder Shawnee, Ks. 66203 (913)262-1722