

# LORSON RANCH

## Carriage Meadows South PUD Development & Preliminary Plan Minor Amendment

A TRACT OF LAND LOCATED IN A PORTION OF THE NORTHEAST ONE-QUARTER (NE 1/4) OF SECTION 22 AND A PORTION OF THE NORTHWEST ONE-QUARTER (NW 1/4) OF SECTION 23, ALL IN TOWNSHIP 15 SOUTH, RANGE 65 WEST OF THE 6TH P.M., EL PASO COUNTY, COLORADO

### DEVELOPMENT STANDARDS AND GUIDELINES

RM - Medium Residential Gross density (7-10 du/ac) for Single Family Residential Units.

- Residential Use Standards:
  - There shall only be one (1) Principal (primary) use of Single Family Residence conducted on a lot.
  - Allowed Uses include: Single Family Residential, mail kiosks, trail corridors, development signage, pedestrian walkways, fencing, utilities, stormwater facilities, drainage improvements, and any other uses allowed per the Declaration of Covenants, Conditions and Restrictions for Lorson Ranch, and the Lorson Ranch Design Guidelines.
  - Minimum Lot Area:
    - Dwelling, Single Family: Three Thousand Eight Hundred Twenty Five Square Feet (3,825 SF).
  - Maximum Percentage of Structural Coverage of Lot: Fifty Percent (50%).
  - Maximum Structural Height: Forty Feet (40').
  - Minimum Width of Lot at Front Building Setback Line: Forty Feet (40').
- Setback Requirements:
  - Front yard: Twenty Feet (20')
  - Side yard: Five Feet (5')
  - Rear yard: Fifteen Feet (15')
  - Corner lot side yard (Non-Driveway Side): Ten Feet (10')

- Accessory Use Standards:
  - Accessory structures shall be limited to typical residential structures such as sheds, decks, detached garages, patios, hot tubs, and pools. There shall be no guest houses allowed.
  - Accessory structures shall only be located within the back-yard and must be located behind the main structure.
  - Maximum Accessory Structure Height: Fifteen Feet (15')
  - Setback Requirements:
    - Side Yard: Five Feet (5')
    - Rear Yard: Five Feet (5')

### LANDSCAPE

- Common open space areas shall be landscaped. Urban Park improvements provided by the developer may be applied to park land dedication and/or fees with review and approval of El Paso County Parks.
- Total open space area is cumulative of the overall Lorson Ranch development in accordance with the Lorson Ranch Overall PUD Development and Phasing Plan, as amended.
- Landscaping areas, common open space and buffers shall be maintained by the Lorson Ranch Metropolitan District.
- Trails to be soft surface to match existing trails found within Lorson Ranch.
- Any future trails shall be public. Final trail alignment to be determined in the field based on grade, vegetation, and other existing site features.
- Regional Trail along Jimmy Camp Creek is existing to remain and is owned and maintained by El Paso County.
- Any future non-regional trails to be owned and maintained by the Lorson Ranch Metropolitan District.
- Buffering from the future commercial and high density residential tracts to be provided at the time of development for those parcels. Required buffering and landscape to be per the El Paso County Landscape Development Code Section 6.2.2 Landscape Requirements, as amended.

### PUD MODIFICATIONS

- A PUD Modification for Section 6.2.2.B.1) of the EPC Land Development Code to reduce the requirement of one street tree for every 20' of linear frontage for arterial roadways to one street for every 30' of linear frontage along Marksheffel Blvd.
- A PUD Modification for Section 6.2.2.B.1) of the EPC Land Development Code to reduce the requirement of one street tree for every 30' of linear frontage for collector roadways to one street for every 50' of linear frontage along Lorson Ranch Blvd.

### STREETS

- All streets will be public and shall be named and constructed to El Paso County standards, dedicated to El Paso County for and upon approval by El Paso County, and shall be maintained by El Paso County Department of Public Works.
- Landscaping areas, common open space and buffers shall be maintained by the Lorson Ranch Metropolitan District.
- Streets within this development provide for levels of vehicular circulation required by the Traffic Study. Sidewalks shall be provided on both sides of all streets as illustrated on this plan. Typical cross sections will be shown with future masterplans.
- All roadways will be addressed with final plat submittals and will meet county design criteria.

### ARCHITECTURAL CONTROL COMMITTEE REVIEW

- Build out will be in accordance to architectural control committee notes and regulations of the Lorson Ranch Metro District CCR's as well as the Declaration of Covenants, Conditions and Restrictions for Lorson Ranch, and the Lorson Ranch Design Guidelines.

### GENERAL NOTES

- Refer to approved Lorson Ranch Development Agreement #6, as Amended, by the El Paso County Board of County Commissioners for development information.
- Any future trails shall be public. Final trail alignment to be determined in the field based on grade, vegetation, and other existing site features.
- No new residential lots (Lots 1-234) shall have direct access to Marksheffel Road, Lorson Boulevard, or Fontaine Boulevard. See note #12 below regarding access to Lot 235.
- All water system elements and sanitary sewerage conveyance conduits and their associated appurtenances shall be dedicated to the Wideside Water & Sanitation District. All other utilities shall be owned as appropriate.
- All electric service shall be provided by Mountain View Electric Association. All tracts through which MVEA utilities will be located will be given utility easements as required.
- MVEA utility easements will be granted as required.
- Public Utility Drainage Easements shall be provided on all lots as follows:
  - Front: ten feet (10')
  - Side: five feet (5')
  - Rear: ten feet (10')
  - At all tracts, landscape and detention tributaries will be designated for Public Utilities as required.
- Street lights will be restricted to Mountain View Electric Association details and specifications.
- Site lighting will meet the requirements set forth in Section 6.2.3 of the El Paso County Land Development Code, as amended, the Declaration of Covenants, Conditions and Restrictions for Lorson Ranch and the Lorson Ranch Design Guidelines.
- Fencing:
  - All proposed fencing is subject to Design Review Committee approval as set forth in the Covenants and Design Guidelines for Lorson Ranch. Please visit: www.lorsonranch.com for more information regarding review.
  - Internal Fencing: Internal fencing is allowed within individual rear yards. Fencing design, materials, and layout shall be approved by the Design Review Committee. Please visit: www.lorsonranch.com for more information regarding review.
  - No fences shall impede drainage in any way.
- The mailbox boxes locations shown are preliminary with final locations to be determined with each final plat in coordination with the U.S. Postal Service.
- The single access point along Marksheffel Road to the existing residence on Lot 235 shall remain until such time as the rezoning of the property changes.
- Existing residence on Lot 235 shall meet development Standards as illustrated above. There are no existing conditions that require special attention.

### FLOODPLAIN NOTES:

- A portion of this property is located within a designated FEMA Floodplain as determined by the flood insurance rate map, community map number 08041COB75P, effective date March 17, 1997. The Floodplain was revised per LOMR Case No. 06-08-B643P effective date of revision August 29, 2007.

### GEOLOGIC CONDITIONS:

- Subsequent to overlot grading but prior to the installation of wet utilities, additional geotechnical investigations should be performed as required to further characterize the subsurface soil conditions and develop recommendations for installation of utilities, pavement subgrade construction, etc.
- Shallow groundwater conditions were not encountered at the time of the Geology and Soils Report performed by RMC - Rocky Mountain Group, last amended October 7, 2016. However, potential seasonally high groundwater conditions may be encountered at the time of construction. Site specific subsurface soil investigations conducted prior to construction should include determination of the suitability of basement construction for that site.
- Consideration has been given to the installation of an area wide underdrain system. Based on information from Core Engineering, there is no suitable gravity outfall for an underdrain system to allow gravity flow from house foundation underdrain systems. As such, this development will include a modified underdrain system that outfalls into the on-site stormwater ponds at an elevation higher than basement floor elevations. Subsurface foundation drains, if required, shall include sump pump systems discharging into the modified underdrain system laterals or overlaid. Overland sump pump discharges are allowed to adjacent stormwater ponds, roadside swales, or open space but cannot flow overland across sidewalks or curbs/gutter.

### SITE DATA TABLE:

TOTAL SITE ACREAGE	106.64 AC
PROPOSED SINGLE-FAMILY DWELLING UNITS	235 DU
PROPOSED GROSS DENSITY	2.20 D.U./AC.
PROPOSED NET DENSITY (LESS DEDICATED R.O.W.)	6.88 D.U./AC.

### LAND USE TABLE:

TYPE OF USE	# ACRES PROVIDED	% OF PROPERTY
SINGLE-FAMILY RESIDENTIAL (235 LOTS)	34.40 AC	32%
JIMMY CAMP CREEK TRIBUTARY (OPEN SPACE)	18.82 AC	17%
COMMERCIAL (FUTURE)	13.69 AC	13%
RUMH RESIDENTIAL (FUTURE)	5.33 AC	5%
OPEN SPACE (10.67 ACRES REQUIRED)	15.66 AC	15%
MARKSHEFFEL ROAD RIGHT-OF-WAY DEDICATION	2.15 AC	2%
STREET RIGHTS-OF-WAY	16.59 AC	16%
<b>TOTAL</b>	<b>106.64 AC</b>	<b>100%</b>

### GENERAL PROVISIONS:

STATEMENT OF INTENT: The purpose of this PUD (Planned Unit Development) Plan is to provide for 235 Single-Family detached residential units per the approved 2006 Zoning and Conceptual Plan and the Lorson Ranch Sketch Plan Minor Amendment.

AUTHORITY: This PUD is authorized by Chapter 4 of the El Paso County Land Development Code, as amended, adopted pursuant to the Colorado Planned Unit Development Act of 1972, as amended.

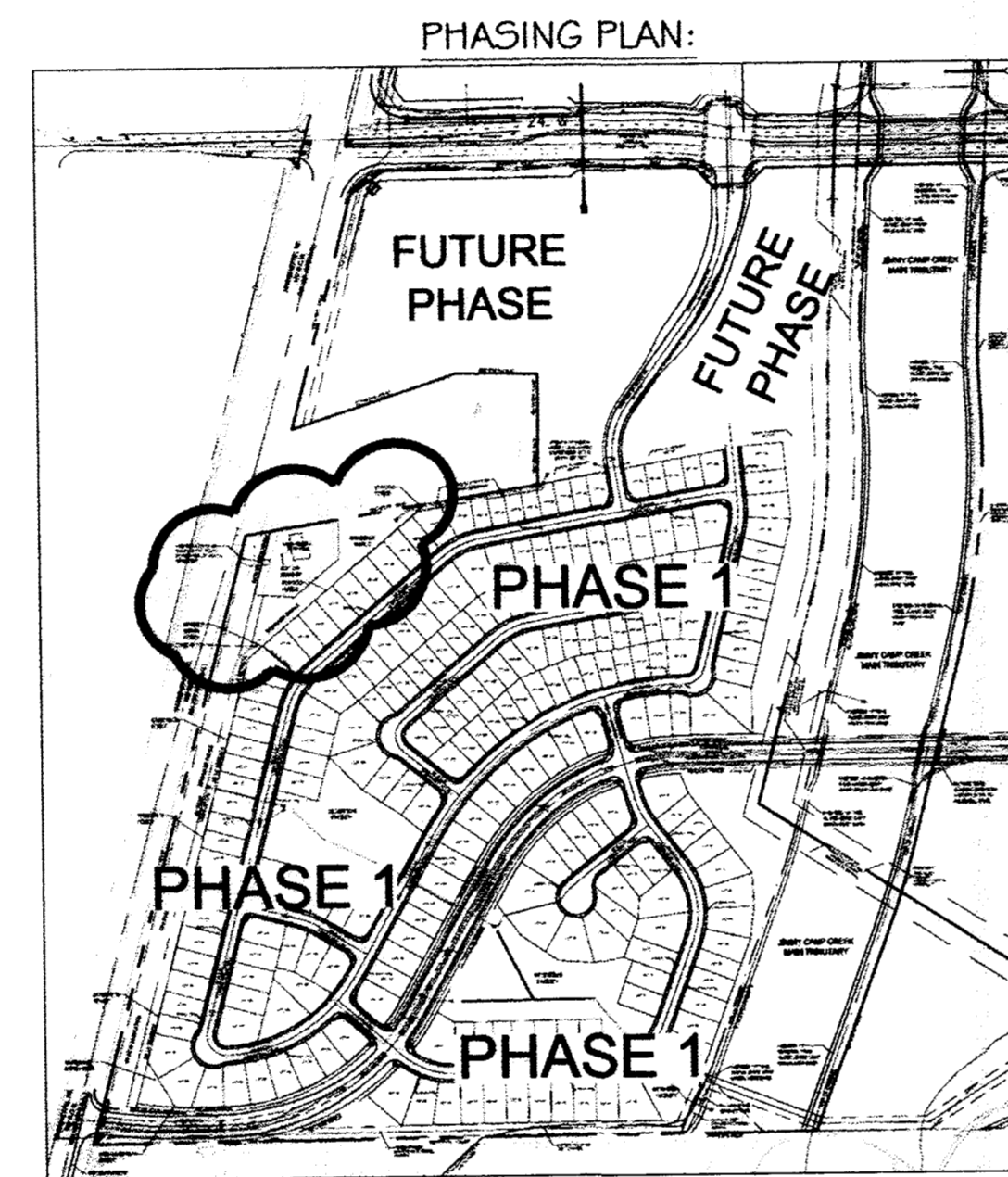
APPLICABILITY: The provisions of this PUD shall run with the land. The landowners, their successors, heirs, or assigns shall be bound by this Development Plan, as amended and approved by the Planning and Community Development Department Director or Board of County Commissioners.

ADOPTION: The adoption of this development plan shall evidence the findings and decisions of the El Paso County Board of County Commissioners that this Development Plan for LORSON RANCH CARRIAGE MEADOWS SOUTH is in general conformity with the El Paso County Master Plan, El Paso County Policy Plan and applicable Small Area Plan(s), is authorized under the provisions of the El Paso County Land Development Code, as amended, and this development plan complies with the Colorado Planned Unit Development Act of 1972, as amended.

RELATIONSHIP TO COUNTY REGULATIONS: The provisions of this Development Plan shall prevail and govern the development of LORSON RANCH CARRIAGE MEADOWS SOUTH provided, however, that where the provisions of this Development Plan do not address a particular subject, the relevant provisions of the El Paso County Land Development Code, as amended and in effect at the time of the PUD plan approval (or owner acknowledges the PUD changes with the Code), or any other applicable resolutions or regulations of El Paso County, shall be applicable.

ENFORCEMENT: To further the mutual interest of the residents, occupants, and owners of the PUD and of the public in the preservation of the integrity of this development plan, the provisions of this plan relating to the use of land and the location of common open space shall run in favor of El Paso County and shall be enforceable at law or in equity by the County without limitation on any power or regulation otherwise granted by law.

CONFLICT: Where there is more than one provision within the development plan that covers the same subject matter, the provision which is most restrictive or imposes higher standards or requirements shall govern.



PHASE I (Filing 1): 235 Units on 106.64 Acres (2.20 DU/Acre)

### LAND USE:

CURRENT ZONING:	PUD (PLANNED UNIT DEVELOPMENT)
PROPOSED ZONING:	PUD (PLANNED UNIT DEVELOPMENT)- RM Residential Medium Density
VACANT UNDEVELOPED	
CURRENT LAND USE:	SINGLE-FAMILY RESIDENTIAL; LANDSCAPE EASEMENTS; PARKS/RECREATION; OPEN SPACE; TRAIL CORRIDORS; UTILITY EASEMENTS; DRAINAGE & DETENTION FACILITIES; SIGNAGE

### TRACT NOTES:

- Tract A to be dedicated to El Paso County, Tract A to be owned and maintained by El Paso County.
- Tract E and F to be dedicated to, owned and maintained by El Paso County. Tract E and F channel improvements to be completed by the developer owner as required. Upon completion and subsequent acceptance by El Paso County, Tracts E and F will be dedicated to El Paso County.
- Construction of the Lorson Boulevard bridge across the Jimmy Camp Creek main tributary shall be in accordance with the South Amended Development Agreement for Lorson Ranch, approved by BoCC Resolution No. 15-091 and recorded at Reception No. 215020531. Upon completion of construction and preliminary acceptance by El Paso County, Tract F shall be conveyed to El Paso County.
- Tracts B-D and G-Q to be owned and maintained by the Lorson Ranch Metropolitan District.

### CARRIAGE MEADOWS SOUTH TRACT TABLE:

TRACT A: 2.15 ACRES	MARKSHEFFEL ROAD RIGHT-OF-WAY DEDICATION
TRACT B: 1.89 ACRES	LANDSCAPE/ UTILITY DRAINAGE/ TRAILS/ SIGNAGE
TRACT C: 0.11 AC (4,619 SF)	LANDSCAPE/ UTILITY DRAINAGE/ TRAILS/ SIGNAGE
TRACT D: 1.79 AC (78,164 SF)	OPEN SPACE UTILITY DRAINAGE/ DETENTION FACILITIES/ RECREATIONAL USES/ F/M/C DITCH
TRACT E: 7.48 ACRES	DRAINAGE/ OPEN SPACE/ TRAIL CORRIDOR
TRACT F: 11.01 ACRES	DRAINAGE/ OPEN SPACE/ TRAIL CORRIDOR
TRACT G: 5.70 ACRES	OPEN SPACE/ UTILITIES/ DRAINAGE/ DETENTION FACILITIES/ RECREATIONAL USES/ F/M/C DITCH
TRACT H: 2.36 ACRES	OPEN SPACE/ UTILITY DETENTION FACILITIES/ RECREATIONAL USES/ LANDSCAPE
TRACT I: 0.08 AC (3,271 SF)	LANDSCAPE/ UTILITY DRAINAGE/ TRAILS/ SIGNAGE
TRACT J: 0.02 AC (1,040 SF)	LANDSCAPE/ UTILITY DRAINAGE/ TRAILS/ SIGNAGE
TRACT K: 0.21 AC (9,061 SF)	LANDSCAPE/ UTILITY DRAINAGE/ TRAILS/ SIGNAGE
TRACT L: 0.22 AC (9,587 SF)	LANDSCAPE/ UTILITY DRAINAGE/ TRAILS/ SIGNAGE
TRACT M: 1.99 ACRES	OPEN SPACE/ UTILITY DETENTION FACILITIES/ RECREATIONAL USES/ LANDSCAPE
TRACT N: 13.69 ACRES	VACANT, FUTURE COMMERCIAL DEVELOPMENT
TRACT O: 5.33 ACRES	VACANT, FUTURE RMH DEVELOPMENT
TRACT P: 0.56 AC (24,535 SF)	UTILITIES/ DRAINAGE/ DETENTION FACILITIES/ RECREATIONAL USES/ LANDSCAPE
TRACT Q: 1.07 AC (46,594 SF)	UTILITIES/ DRAINAGE/ DETENTION FACILITIES/ RECREATIONAL USES/ LANDSCAPE
TRACT R: 0.60 AC (26,167 SF)	FUTURE ROAD RIGHTS-OF-WAY BRIDGE

### LEGAL DESCRIPTION - CARRIAGE MEADOWS SOUTH:

A TRACT OF LAND LOCATED IN A PORTION OF THE NORTHEAST ONE-QUARTER (NE 1/4) OF SECTION 22 AND A PORTION OF THE NORTHWEST ONE-QUARTER (NW 1/4) OF SECTION 23, ALL IN TOWNSHIP 15 SOUTH, RANGE 65 WEST OF THE 6TH P.M., EL PASO COUNTY, COLORADO AND BEING MORE PARTICULARLY DESCRIBED AS FOLLOWS:

COMMENCING AT THE WEST ONE-QUARTER CORNER OF SAID SECTION 23, SAID POINT BEING THE POINT OF BEGINNING OF THE TRACT OF LAND HEREBY DESCRIBED, AS MONUMENTED BY A NO. 6 REBAR, NO. 6 CAP, FROM WHICH THE EAST ONE-QUARTER CORNER OF SAID SECTION 23, AS MONUMENTED BY A 3-1/4" ALUMINUM CAP STAMPED 1/4 COL RS 31161" AND IS ASSUMED TO BEAR N84°19'2"E, A DISTANCE OF 5319.56 FEET AND IS THE BASIS OF BEARINGS USED HEREIN;

TENCEN ALONG THE SOUTHWESTERLY CORNER OF SAID SECTION 22, A DISTANCE OF 228.42 FEET TO THE SOUTHWESTERLY CORNER OF THE TRACT OF LAND DESCRIBED IN THE BARGAIN AND SALE DEED, AS RECORDED UNDER RECEPTION NO. 204201646 OF THE RECORDS OF THE EL PASO COUNTY CLERK AND RECORDER;

TENCEN ALONG THE SOUTHERLY AND WESTERLY LINES OF SAID BARGAIN AND SALE DEED THE FOLLOWING TWO (2) COURSES:

- TENCEN S89°27'13"W ALONG THE SOUTH LINE OF SAID NORTHEAST ONE-QUARTER (NE 1/4), A DISTANCE OF 1562.38 FEET (S89°27'13"W, 1562.40 FEET OF RECORD) TO A POINT ON THE EASTERLY RIGHT-OF-WAY LINE OF MARKSHEFFEL ROAD;
- TENCEN N44°49'49"E ALONG SAID EASTERLY RIGHT-OF-WAY LINE, A DISTANCE OF 1502.96 FEET (1503.03 FEET OF RECORD) TO THE SOUTHWESTERLY CORNER OF LOT 1, BROWNVILLE SUBDIVISION NO. 2, AS RECORDED IN PLAT BOOK H-4 AT PAGE 81 OF SAID COUNTY RECORDS;

TENCEN ALONG THE SOUTHERLY AND WESTERLY LINES OF SAID BARGAIN AND SALE DEED THE FOLLOWING TWO (2) COURSES:

- TENCEN N04°33'37"E, A DISTANCE OF 784.98 FEET (N01°50'06", 785.07 FEET OF RECORD);
- TENCEN N03°05'05"E, A DISTANCE OF 169.33 FEET (N01°05'07", 169.38 FEET OF RECORD) TO THE COMMON CORNER OF SAID LOT 1 AND 2 SAID POINT ALSO BEING A POINT ON SAID BARGAIN AND SALE DEED;

TENCEN ALONG SAID BARGAIN AND SALE DEED AND SAID LOT 2 THE FOLLOWING THREE (3) COURSES:

- TENCEN N03°39'05"E, A DISTANCE OF 124.06 FEET (N00°37'37", 124.03 FEET OF RECORD PER DEED), 124.00 FEET OF RECORD PER PLAT;
- TENCEN N89°18'08"W, A DISTANCE OF 216.62 FEET (216.53 FEET OF RECORD PER DEED), (N88°55'00"E, 216.53 FEET OF RECORD PER PLAT);
- TENCEN S71°48'21"W, A DISTANCE OF 459.46 FEET (S72°15'00"W OF RECORD PER PLAT);

TENCEN N14°49'59"E, A DISTANCE OF 641.36 FEET TO THE SOUTHWESTERLY CORNER OF THE SPECIAL WARRANTY DEED, AS RECORDED UNDER RECEPTION NO. 207107321 OF SAID COUNTY RECORDS;

TENCEN ALONG THE SOUTHERLY LINE OF SAID SPECIAL WARRANTY DEED THE FOLLOWING EIGHT (8) COURSES:

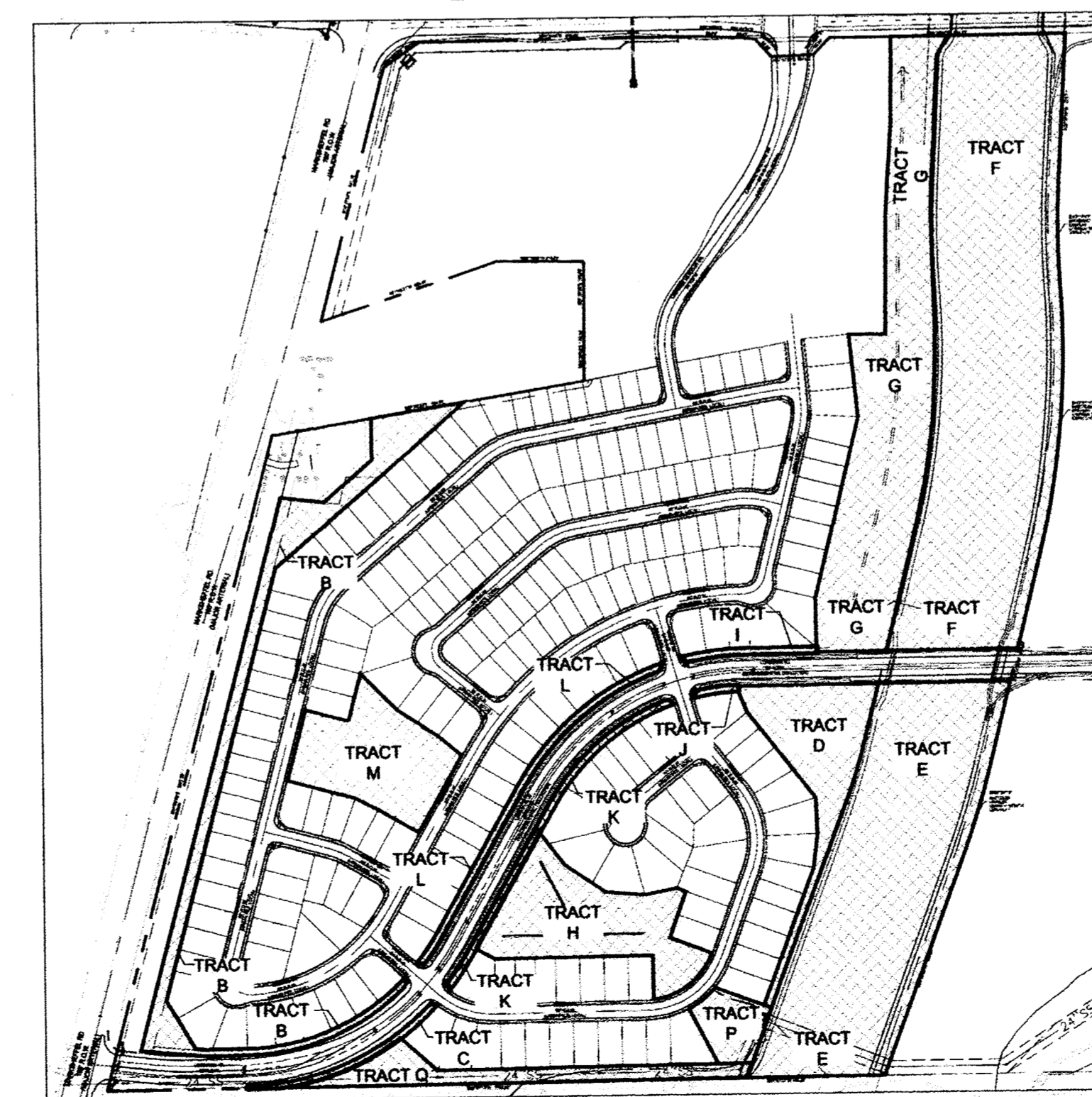
- TENCEN N55°24'37"E, A DISTANCE OF 107.42 FEET;
- TENCEN N89°26'47"E, A DISTANCE OF 696.96 FEET;
- TENCEN S87°39'02"E, A DISTANCE OF 85.64 FEET;
- TENCEN S84°44'52"E, A DISTANCE OF 49.47 FEET;
- TENCEN S42°46'53"E, A DISTANCE OF 59.48 FEET;
- TENCEN N87°51'21"E, A DISTANCE OF 104.03 FEET;
- TENCEN N41°18'57"E, A DISTANCE OF 36.44 FEET;
- TENCEN N02°04'47"E, A DISTANCE OF 88.13 FEET TO THE SOUTHEASTERLY CORNER OF SAID SPECIAL WARRANTY DEED;

TENCEN S03°29'59"W, A DISTANCE OF 378.71 FEET TO A POINT OF CURVE;  
TENCEN ALONG THE ARC OF A 1818.00 FOOT RADIUS CURVE TO THE LEFT, THROUGH A CENTRAL ANGLE OF 071°54'3", AN ARC LENGTH OF 231.94 FEET (THE LONG CHORD OF WHICH BEARS S001°58'28", A LONG CHORD DISTANCE OF 231.79 FEET) TO A POINT OF REVERSE CURVE;  
TENCEN ALONG THE ARC OF A 2170.00 FOOT RADIUS CURVE TO THE RIGHT, THROUGH A CENTRAL ANGLE OF 175°10'1", AN ARC LENGTH OF 679.94 FEET (THE LONG CHORD OF WHICH BEARS S05°34'37"W, A LONG CHORD DISTANCE OF 677.16 FEET);  
TENCEN S14°02'00"W, A DISTANCE OF 519.84 FEET TO A POINT OF CURVE;  
TENCEN ALONG THE ARC OF A 2170.00 FOOT RADIUS CURVE TO THE RIGHT, THROUGH A CENTRAL ANGLE OF 063°41'3", AN ARC LENGTH OF 248.84 FEET (THE LONG CHORD OF WHICH BEARS S17°19'26"W, A LONG CHORD DISTANCE OF 248.71 FEET);  
TENCEN S20°36'33"W, A DISTANCE OF 560.24 TO A POINT ON THE SOUTH LINE OF THE NORTHWEST ONE-QUARTER (NW 1/4) OF SAID SECTION 23;

TENCEN S84°15'27"W ALONG SAID SOUTH LINE, A DISTANCE OF 142.46 FEET TO THE POINT OF BEGINNING;

SAID TRACT OF LAND CONTAINS 106.64 ACRES OF LAND, MORE OR LESS.

### OPEN SPACE AREA:



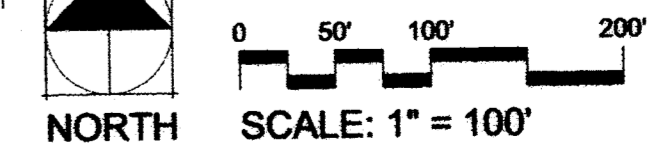
TOTAL OPEN SPACE REQUIRED	10.67 ACRES (10%)
TOTAL OPEN SPACE PROVIDED	34.48 ACRES (32%)

Chuck Broerhan  
06/11/2018 11:47:19 AM  
Doc \$0.00  
Rec \$53.00  
5 Pages

### SHEET INDEX:

P1	PUD COVER SHEET
P2	PUD DEVELOPMENT PLAN
P3	PUD DEVELOPMENT PLAN
L1	PRELIMINARY LANDSCAPE COVER SHEET
L2	PRELIMINARY LANDSCAPE PLAN

El Paso County, CO



SCALE: 1" = 100'

DSD FILE NO.: PUDSP-16-002

### Land Owner Certification

In Witness Whereof: The aforementioned Lorson LLC as Nominee for Heidi LLC and The Lorson Ranch LLC has executed these presents this 24th day of May 2018 A.D. Lorson LLC as Nominee for Heidi LLC and Lorson Ranch LLC, a Colorado Limited Liability Company

Authorized Agent, Manager

STATE OF COLORADO )  
EL PASO COUNTY )

The above and foregoing statement was acknowledged before me this 24th day of May 2018 A.D. by Heidi Mark

Witness my Hand and Seal

My Commission Expires: 3-22-21

### Ownership Certification

I, Patrick A. Hilbert (one of the following: qualified title insurance company, title company, title attorney, or attorney at law) duly qualified, insured, or licensed by the State of Colorado, do hereby certify that I/we have examined the title of all lands depicted and described hereon and that title to such land is owner in fee simple by Heidi LLC and Lorson Ranch LLC STATE OF COLORADO )  
EL PASO COUNTY )

The above and foregoing statement was acknowledged before me this 24th day of May 2018 A.D. by Patrick A. Hilbert

Witness my Hand and Seal: Oliver G. Renter

My Commission Expires:

### County Certification

This PUD Amendment request has been reviewed and found to be complete and in accordance with the El Paso County Land Development Code, as amended, this 5th day of June 2018 A.D. and is hereby approved.

Director, Planning and Community Development Dept.

### Clerk and Recorder Certification

STATE OF COLORADO )

EL PASO COUNTY )

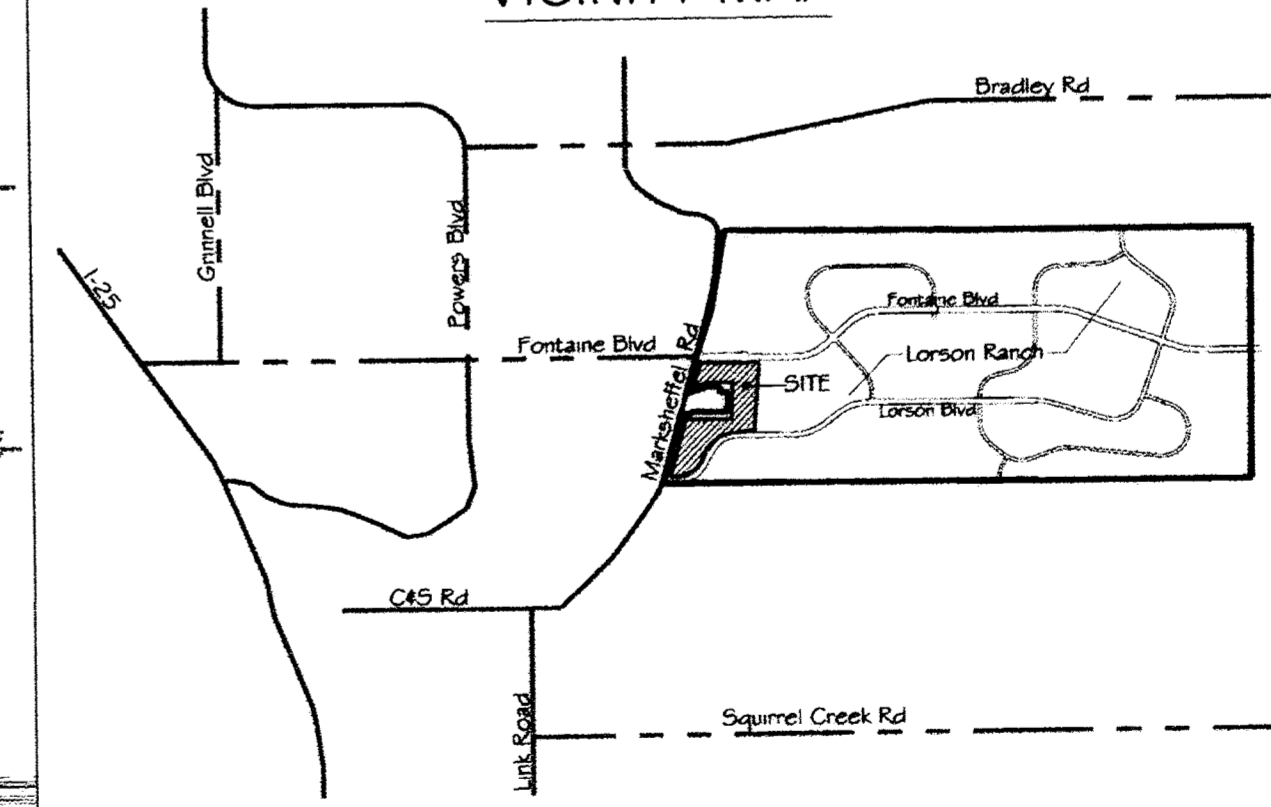
I hereby certify that this Plan was filed in my office on this \_\_\_ of \_\_\_, 20\_\_\_

at \_\_\_ o'clock a.m./p.m. and was recorded per

Reception No. \_\_\_\_\_

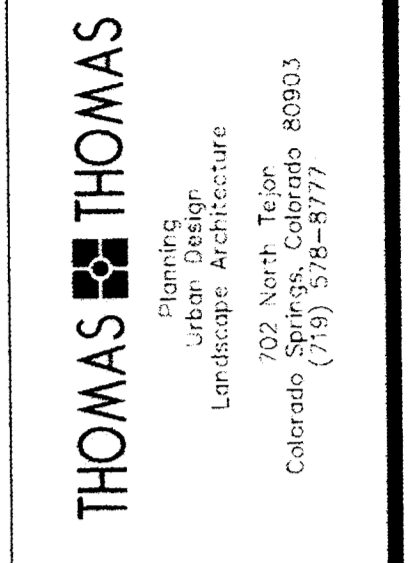
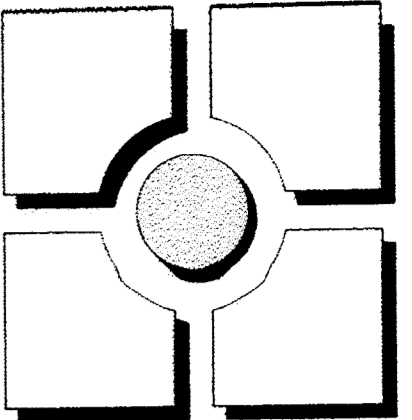
El Paso County Clerk and Recorder

### VICINITY MAP



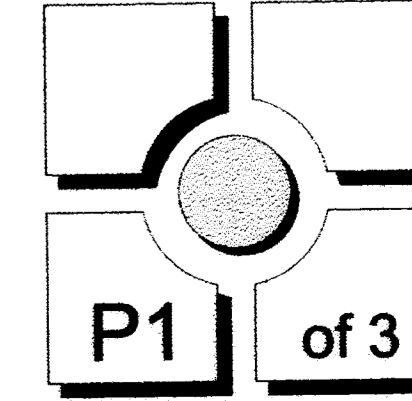
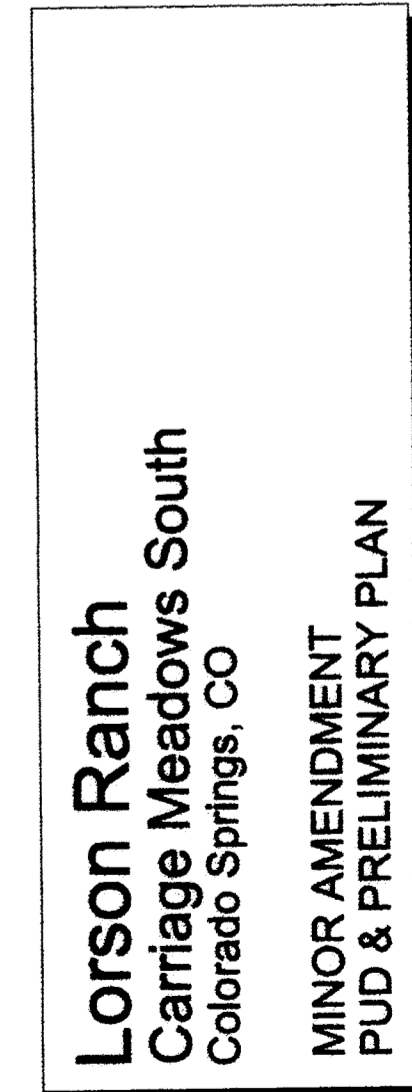
OWNERS: LORSON LLC NOMINEE FOR HEIDI LLC  
LORSON RANCH LLC  
212 N Walnut St., Suite 301  
Colorado Springs, CO 80903  
(719) 635-3200

PREPARED BY: THOMAS & THOMAS, INC.  
PLANNING, URBAN DESIGN, LANDSCAPE ARCHITECTURE, INC.  
702 N. TEJON STREET  
Colorado Springs, CO 80903  
(719) 578-8777



REV#	DATE	DRAWN	CHECKED	APPROVED
1				
2				
3				
4				
5				
6				

DESIGNED	JRA	05-21-18
DRAWN	JRA	05-21-18
CHECKED	JH	05-21-18
PROJECT NUMBER		2816.11
SCALE:		AS NOTED

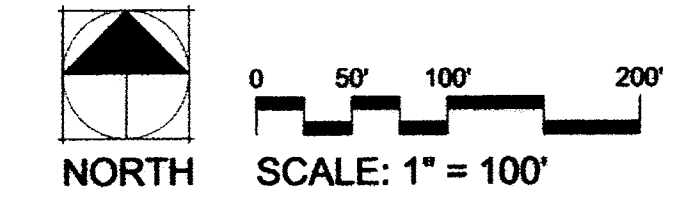
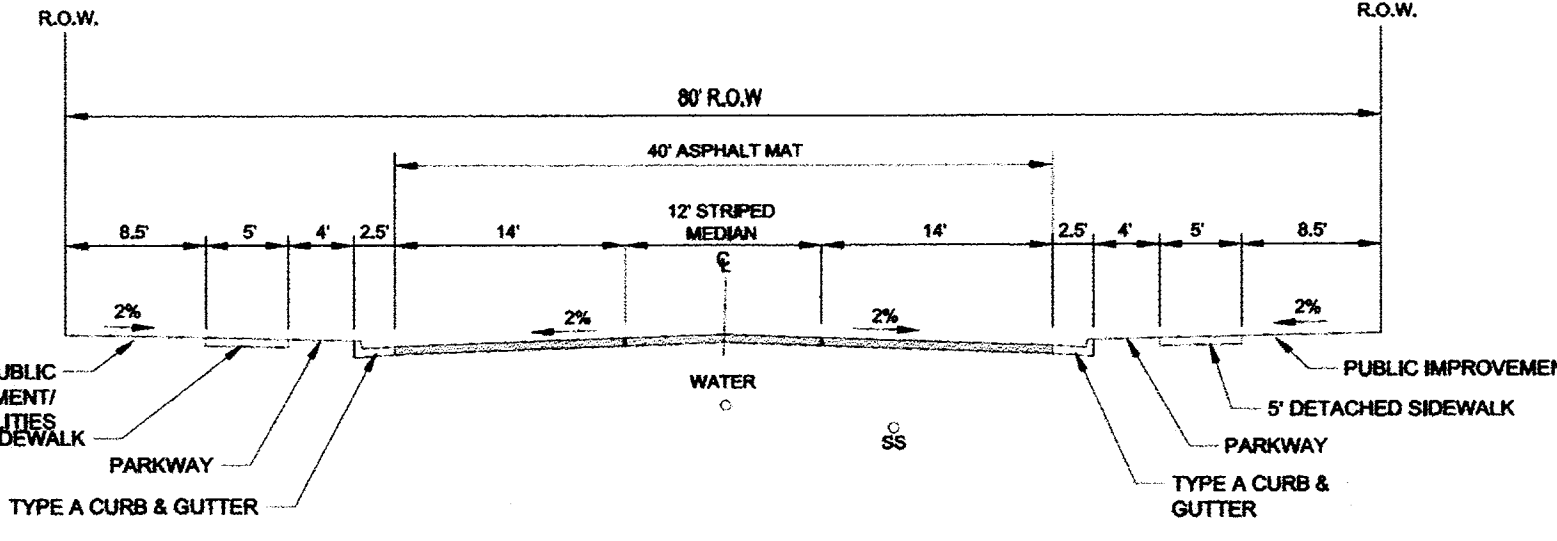
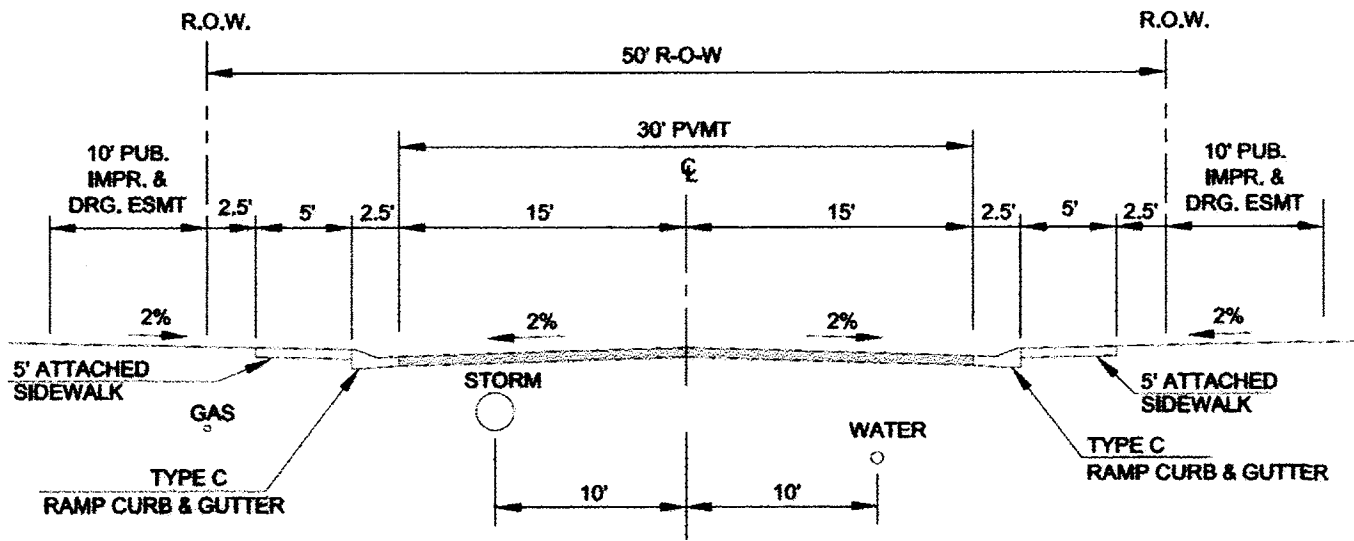
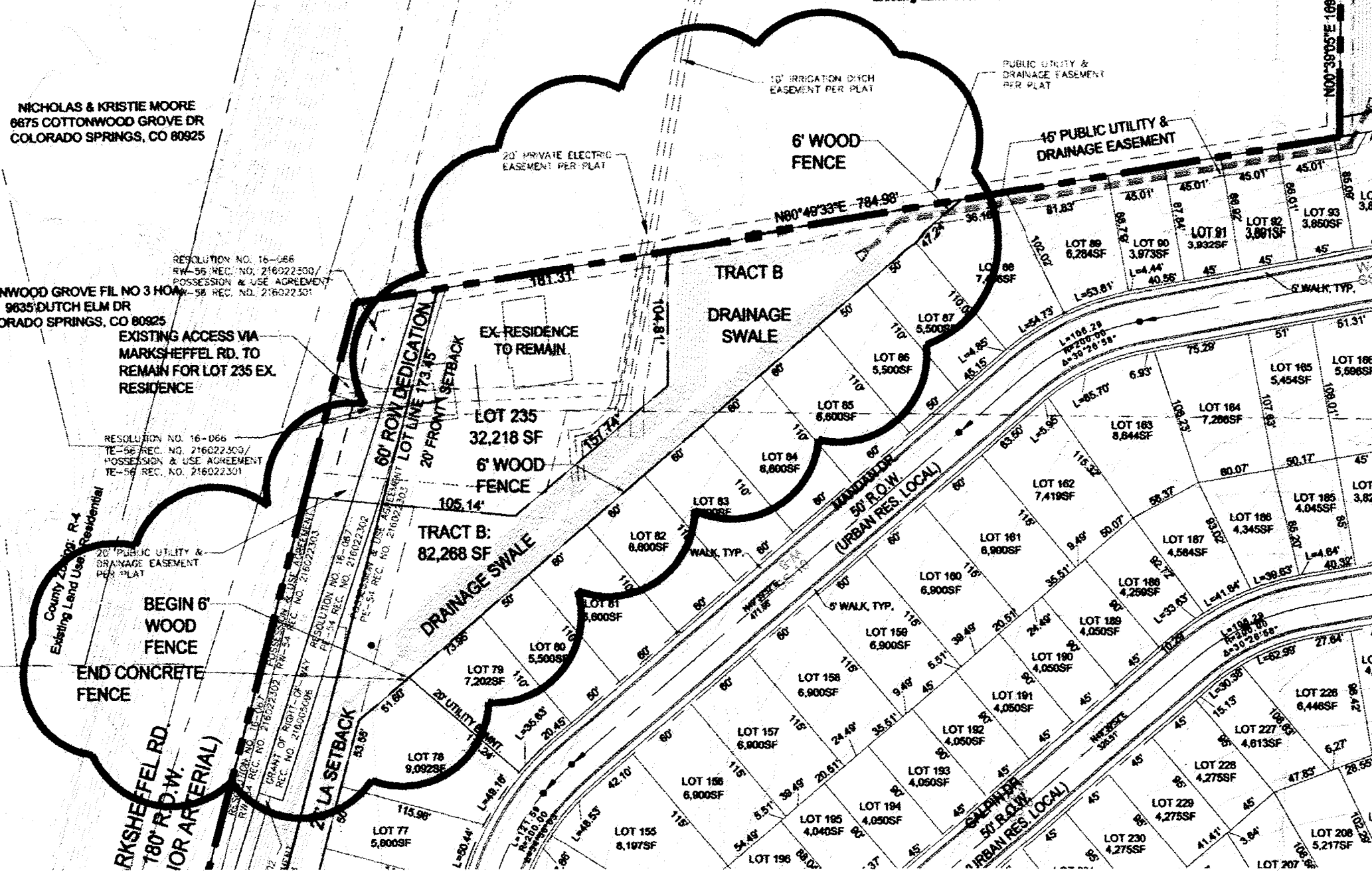
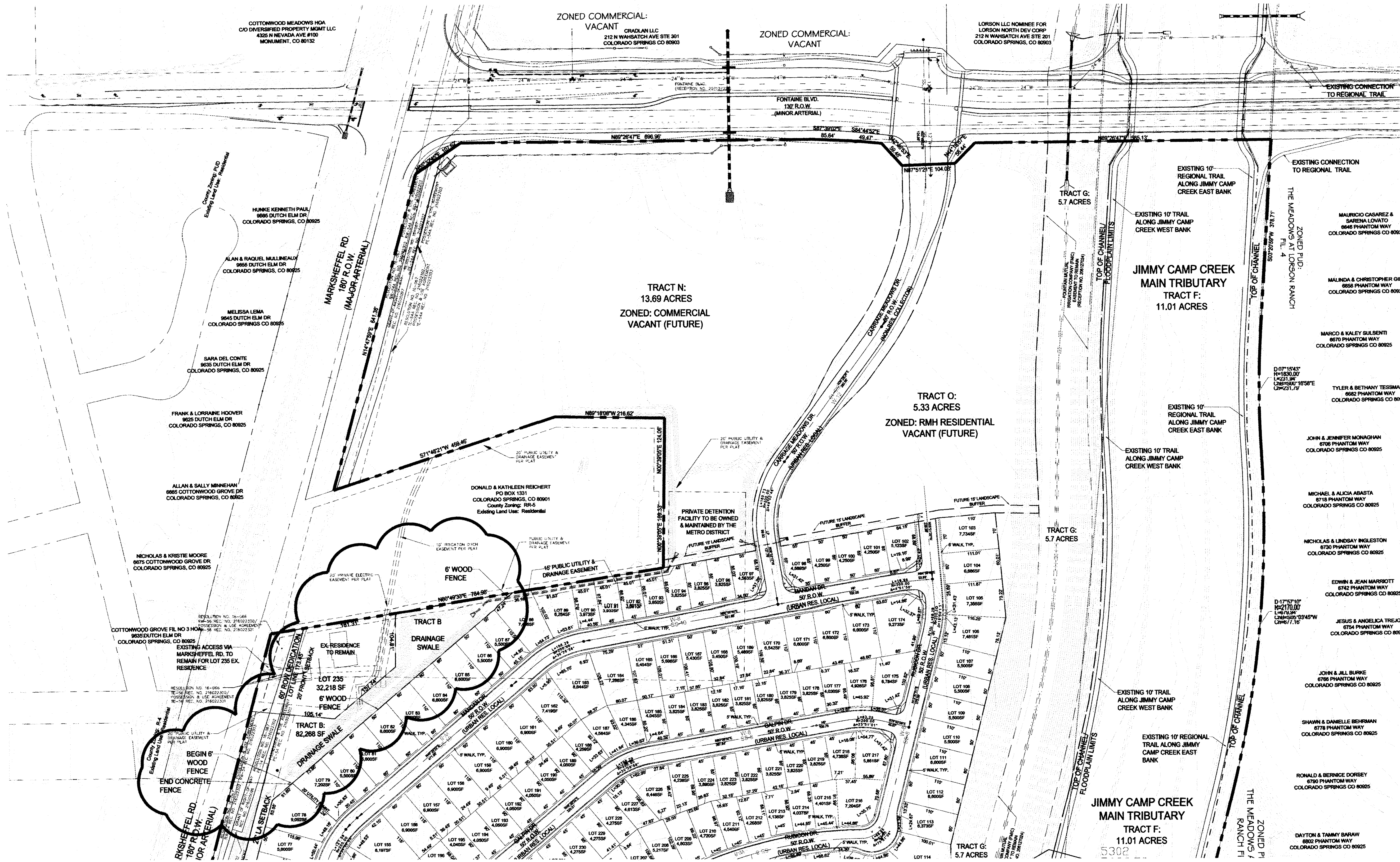


P1 of 3

# LORSON RANCH

## Carriage Meadows South PUD Development & Preliminary Plan Minor Amendment

A TRACT OF LAND LOCATED IN A PORTION OF THE NORTHEAST ONE-QUARTER (NE 1/4) OF SECTION 22 AND A PORTION OF THE NORTHWEST ONE-QUARTER (NW 1/4) OF SECTION 23, ALL IN TOWNSHIP 15 SOUTH, RANGE 65 WEST OF THE 6TH P.M., EL PASO COUNTY, COLORADO



218066386  
6-11-18

DSD FILE NO.: PUDSP-16-002

**THOMAS THOMAS**  
Planning  
Landscape Architecture  
100 North Tejon  
Colorado Springs, Colorado 80903  
(719) 578-8777

REV #	DATE	REVISIONS	DRAWN	CHECKED	APPROVED
1					
2					
3					
4					
5					
6					

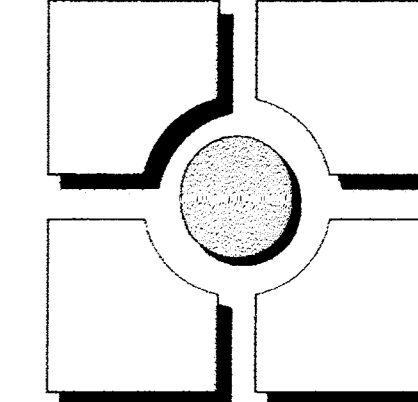
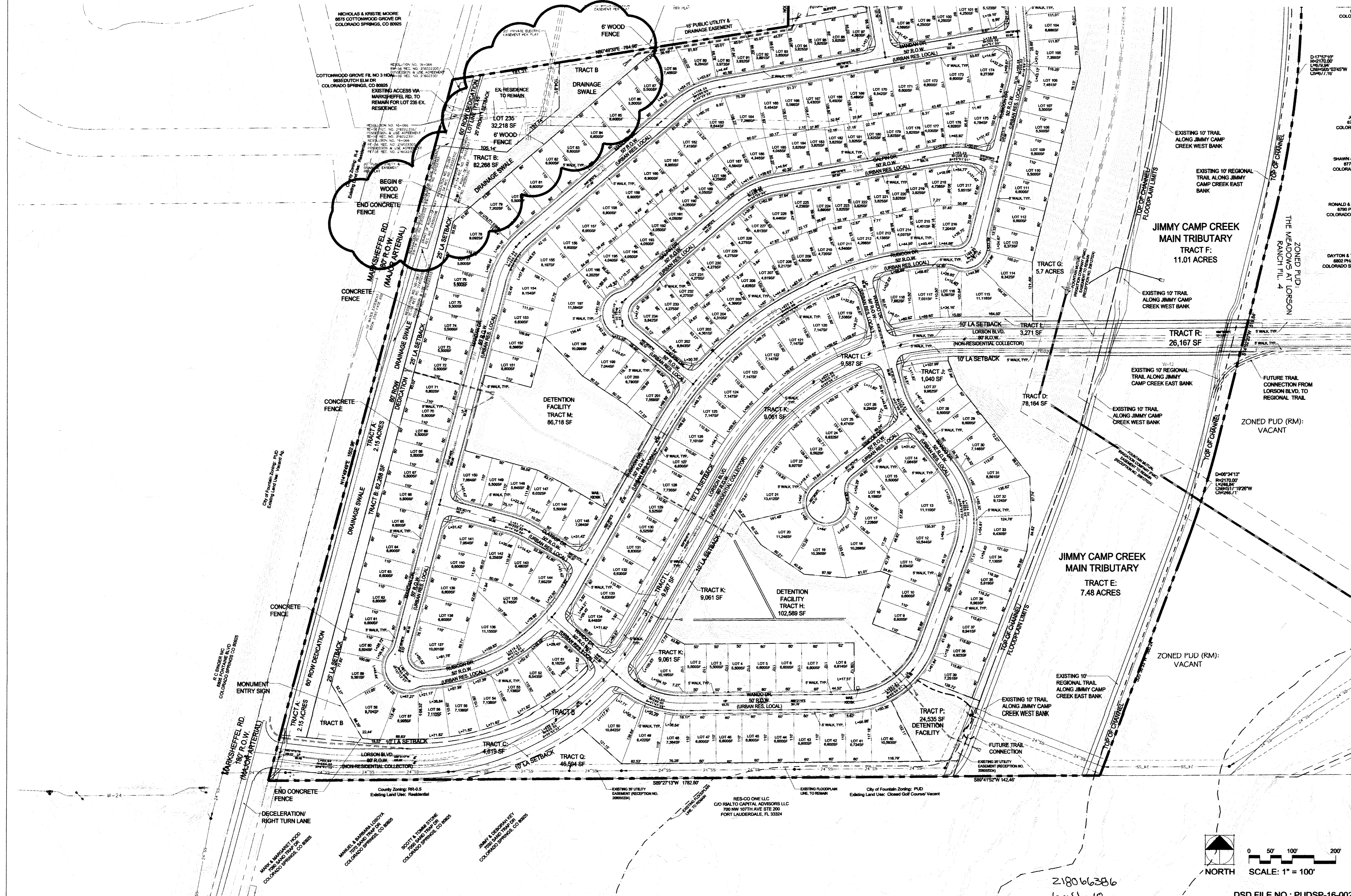
DESIGNED	JRA	05.21.18
DRAWN	JRA	05.21.18
CHECKED	LMT	05.21.18
PROJECT NUMBER:	281611	
SCALE:	AS NOTED	

**Lorson Ranch**  
Carriage Meadows South  
Colorado Springs, CO  
MINOR AMENDMENT  
PUD & PRELIMINARY PLAN

# LORSON RANCH

## Carriage Meadows South PUD Development & Preliminary Plan Minor Amendment

A TRACT OF LAND LOCATED IN A PORTION OF THE NORTHEAST ONE-QUARTER (NE 1/4) OF SECTION 22 AND A PORTION OF THE NORTHWEST ONE-QUARTER (NW 1/4) OF SECTION 23, ALL IN TOWNSHIP 15 SOUTH, RANGE 65 WEST OF THE 6TH P.M., EL PASO COUNTY, COLORADO

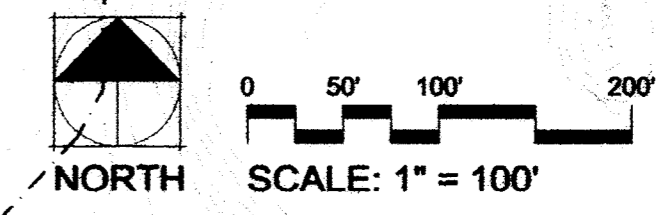
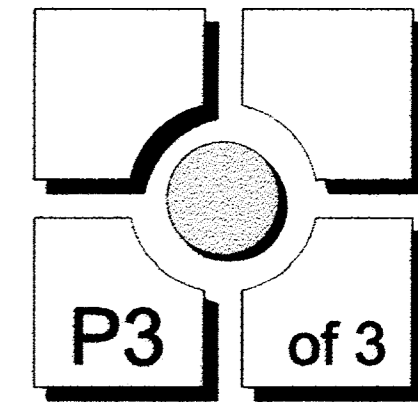


**THOMAS THOMAS**  
 Planning  
 Urban Design  
 Landscape Architecture  
 702 North Tejon  
 Colorado 80903  
 (303) 733-1777

REV #	DATE	DRAWN	CHECKED	APPROVED
1				
2				
3				
4				
5				
6				

DESIGNED	JRA	05.21.18
DRAWN	JRA	05.21.18
CHECKED	LMT	05.21.18
PROJECT NUMBER:		2816.1.1
SCALE:		AS NOTED

**Lorson Ranch**  
 Carriage Meadows South  
 Colorado Springs, CO  
 MINOR AMENDMENT  
 PUD & PRELIMINARY PLAN

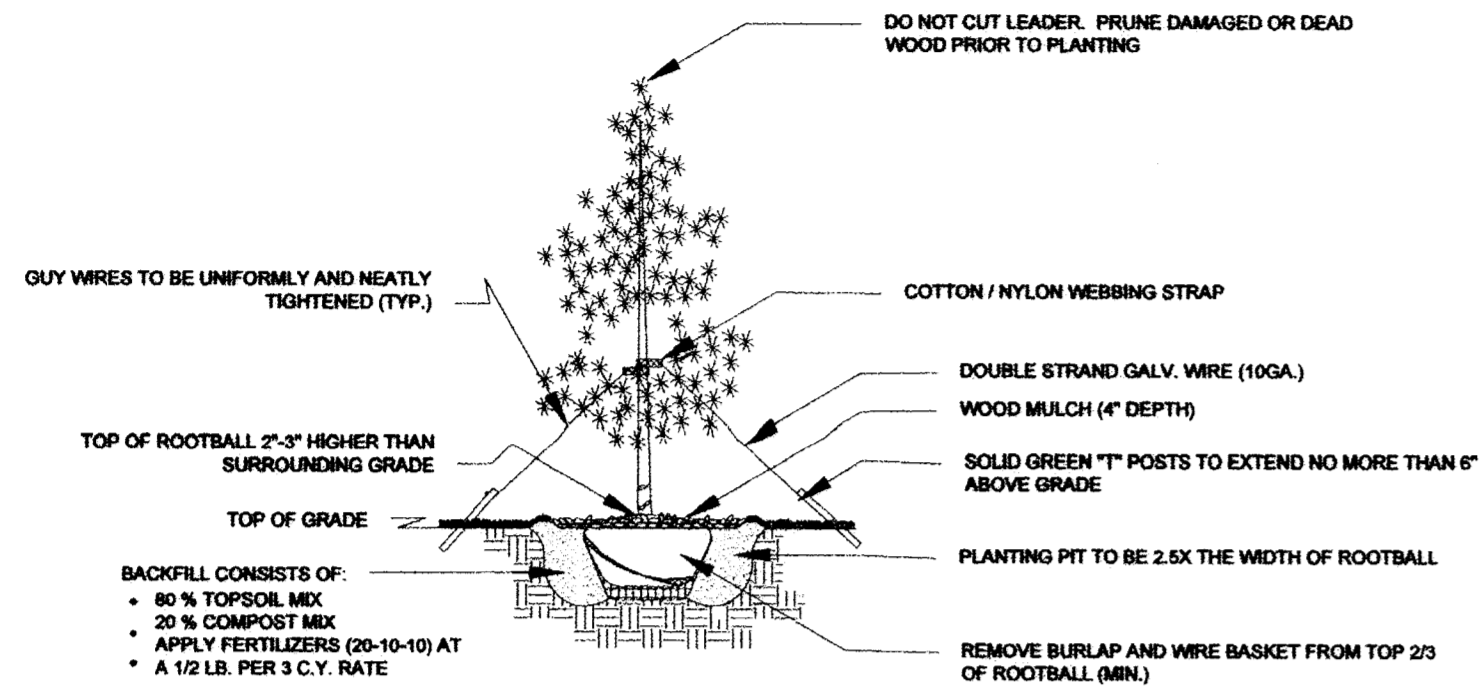


21806386  
 6-11-18

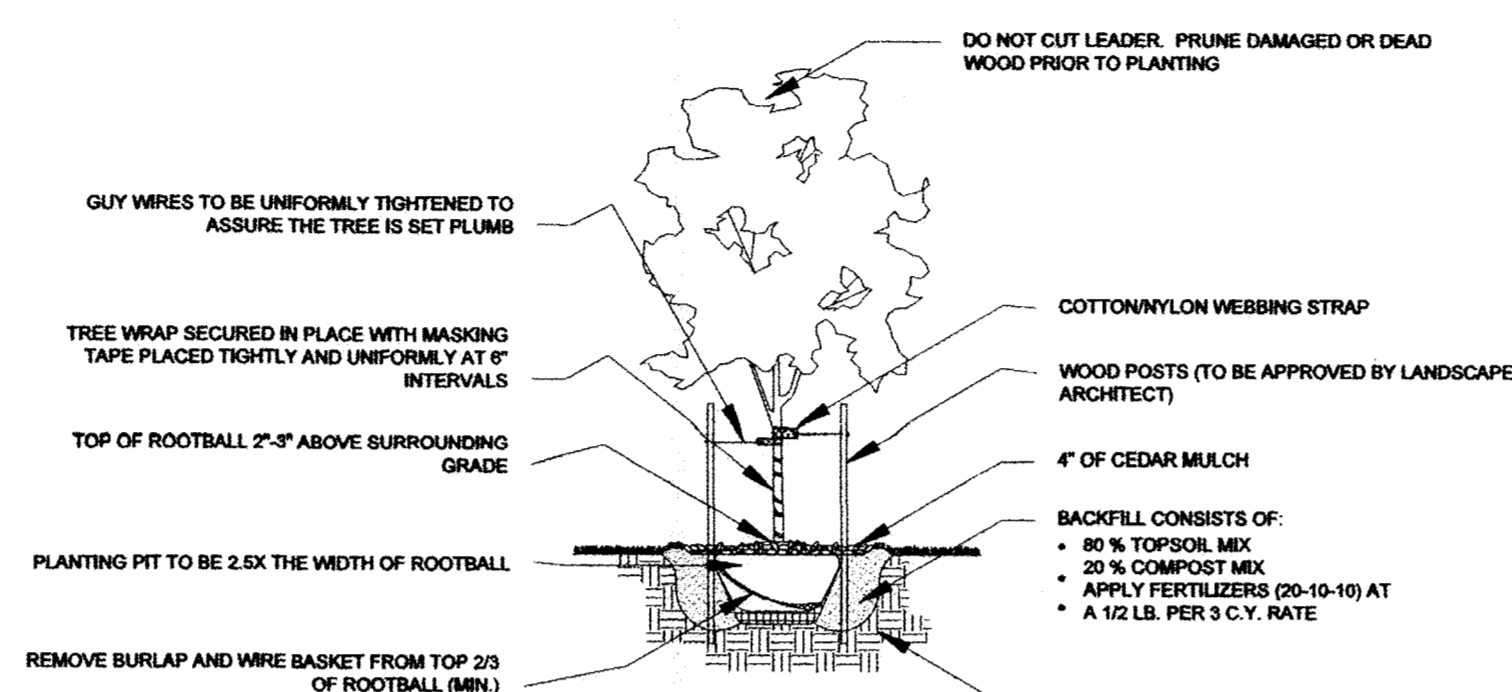
# LORSON RANCH

## Carriage Meadows South PUD Development & Preliminary Plan Minor Amendment

A TRACT OF LAND LOCATED IN A PORTION OF THE NORTHEAST ONE-QUARTER (NE 1/4) OF SECTION 22 AND A PORTION OF THE NORTHWEST ONE-QUARTER (NW 1/4) OF SECTION 23, ALL IN TOWNSHIP 15 SOUTH, RANGE 65 WEST OF THE 6TH P.M., EL PASO COUNTY, COLORADO



EVERGREEN TREE PLANTING DETAIL



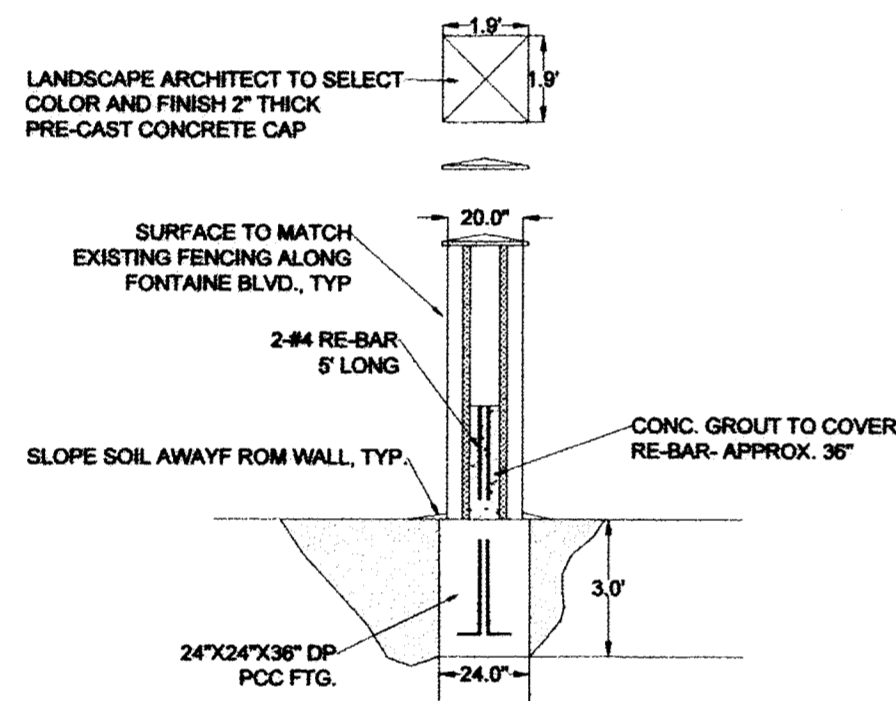
DECIDUOUS TREE PLANTING DETAIL

### PUD LANDSCAPE STREETSCAPES:

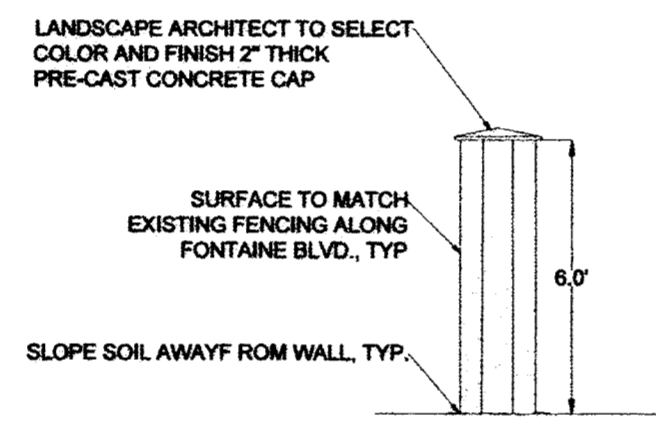
STREET NAME OR ZONE BOUNDARY:	MARKSHEFFEL RD.	NORTHWEST BNDY	LORSON RANCH BLVD. (NORTH SIDE)	LORSON RANCH BLVD. (SOUTH SIDE)
ROADWAY CLASSIFICATION:	PRINCIPAL ARTERIAL	ZONE BOUNDARY	COLLECTOR	COLLECTOR
SETBACK DEPTH REQUIRED/PROVIDED:	25' / 25'	0' / 0'	10' / 10'	10' / 10'
LINEAR FOOTAGE:	960'	623'	2,163'	2,163'
TREE/FEET REQUIRED:	1 / 30'	1 / 30'	1 / 50'	1 / 50'
NUMBER OF TREES REQUIRED/PROVIDED:	32 / 32	21 / 21	43 / 43	43 / 43
NUMBER OF EVERGREEN TREES REQ / PROV:	N/A	N/A	N/A	N/A
% GROUND PLANE VEG. REQUIRED/PROVIDED:	75 / 75	75 / 75	75 / 75	75 / 75
EVERGREEN TREE SYMBOLS:				
DECIDUOUS TREE SYMBOLS:				

### GENERAL PLANTING NOTES:

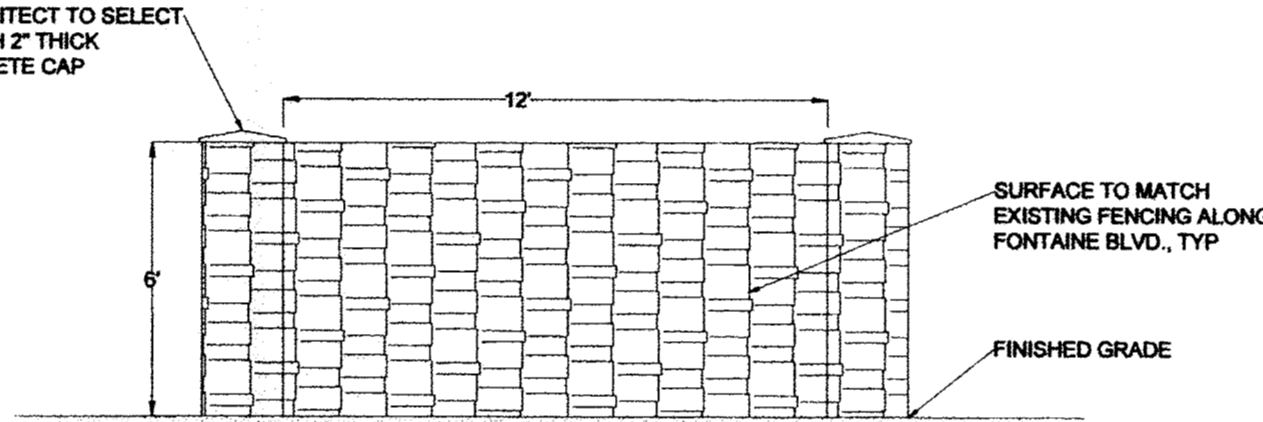
- COMMON OPEN SPACE AREAS SHALL BE XERISCAPED WITH NATIVE SEED PER THE EROSION CONTROL PLANS. ANY URBAN PARK IMPROVEMENTS WILL BE COORDINATED AT A LATER DATE WITH EL PASO COUNTY PARKS VIA PARK LAND AGREEMENTS.
- THE PROPOSED GRAVEL PATHS TO MATCH THE EXISTING PATHS WITHIN LORSON RANCH.
- ALL UTILITY LOCATIONS MUST BE OBTAINED BY THE LANDSCAPE CONTRACTOR PRIOR TO DIGGING.
- ALL AREAS DISTURBED DUE TO CONSTRUCTION SHALL BE REVEGETATED AS PART OF THE BASE BID UNLESS OTHERWISE SHOWN.
- ALL TREE LOCATIONS SHALL BE STAKED PRIOR TO PLANTING FOR APPROVAL BY THE OWNER'S REPRESENTATIVE. ALL SHRUBS SHALL BE PLACED AND THEIR LOCATION APPROVED BY THE OWNER'S REPRESENTATIVE PRIOR TO PLANTING.
- CONTRACTOR IS RESPONSIBLE FOR EROSION CONTROL PRACTICES AS REQUIRED.
- TURF AREAS ARE TO BE IRRIGATED VIA AN AUTOMATED SYSTEM OF GEAR DRIVEN ROTATORS AND POP-UP SPRAYS. ALL SHRUBS AND TREES (EXCEPT THOSE IN TURF AREAS) SHALL BE DRIP IRRIGATED. AN AUTOMATIC IRRIGATION CONTROLLER AND RAIN SENSOR WILL BE INCLUDED IN THE IRRIGATION SYSTEM DESIGN.
- SEEDING SHALL OCCUR AFTER SPRING THAW AND BEFORE APRIL 15 OR AFTER SEPTEMBER 1 AND BEFORE CONSISTENT GROUND FREEZE.
- FOR PROPOSED SITE GRADING, HEIGHT AND SLOPE OF BERMS, SEE GRADING PLAN.
- LANDSCAPING AREAS, TRAILS, COMMON OPEN SPACE AND BUFFERS SHALL BE MAINTAINED BY THE LORSON RANCH METROPOLITAN DISTRICT.
- TRAILS TO BE SOFT SURFACE TO MATCH EXISTING TRAILS FOUND WITHIN LORSON RANCH.
- ANY FUTURE TRAILS SHALL BE PUBLIC. FINAL TRAIL ALIGNMENT TO BE DETERMINED IN THE FIELD BASED ON GRADE, VEGETATION, AND OTHER EXISTING SITE FEATURES.



SECTION VIEW: 6' VERTI CRETE PRE-CAST COLUMN



SECTION VIEW: 6' VERTI CRETE PRE-CAST FENCE

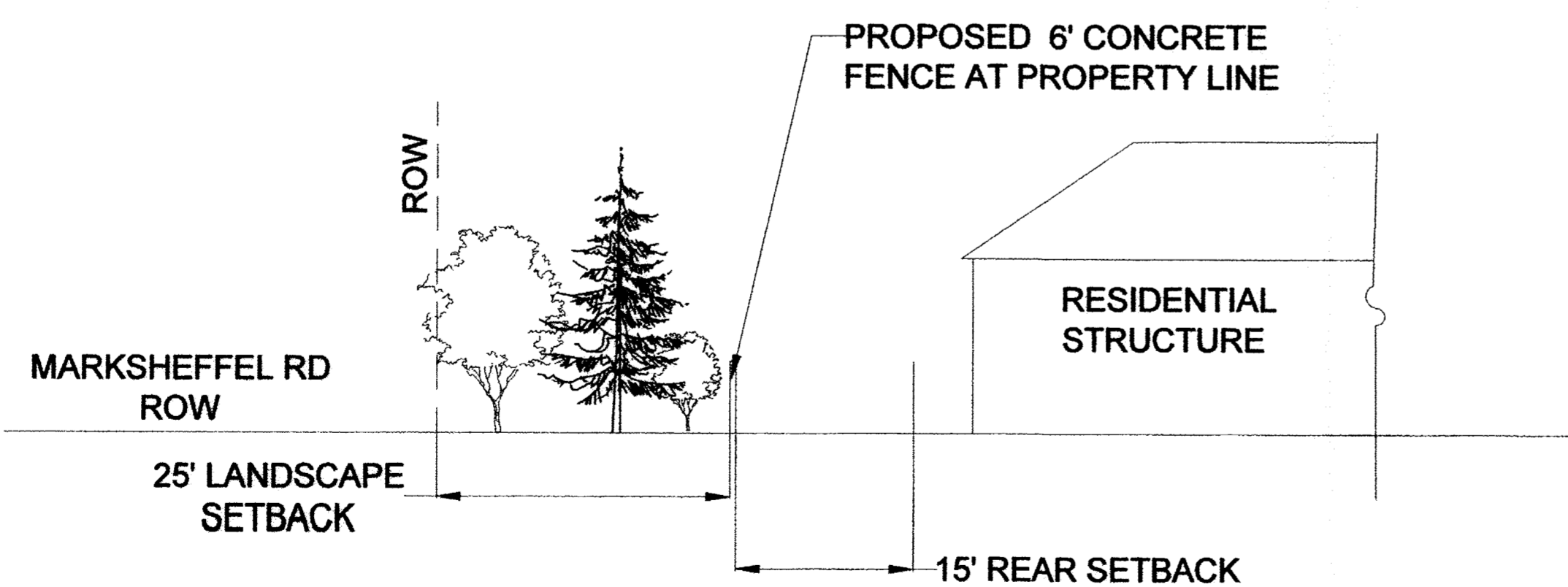


FRONT VIEW: 6' VERTI CRETE PRE-CAST FENCE

- NOTE:
- FENCING, COLUMNS, CAP, ETC. TO MATCH EXISTING FOUND WITHIN LORSON RANCH, TYP.
  - FENCE AND COLUMN COLOR, TEXTURE, PATTERN, ETC. TO MATCH EXISTING FOUND WITHIN LORSON RANCH, TYP.
  - COLUMNS, WALL, STEEL FENCING PER MANUFACTURES SPECIFICATIONS.
  - SUBMIT CUT SHEETS AND SAMPLE PRIOR TO INSTALLATION.

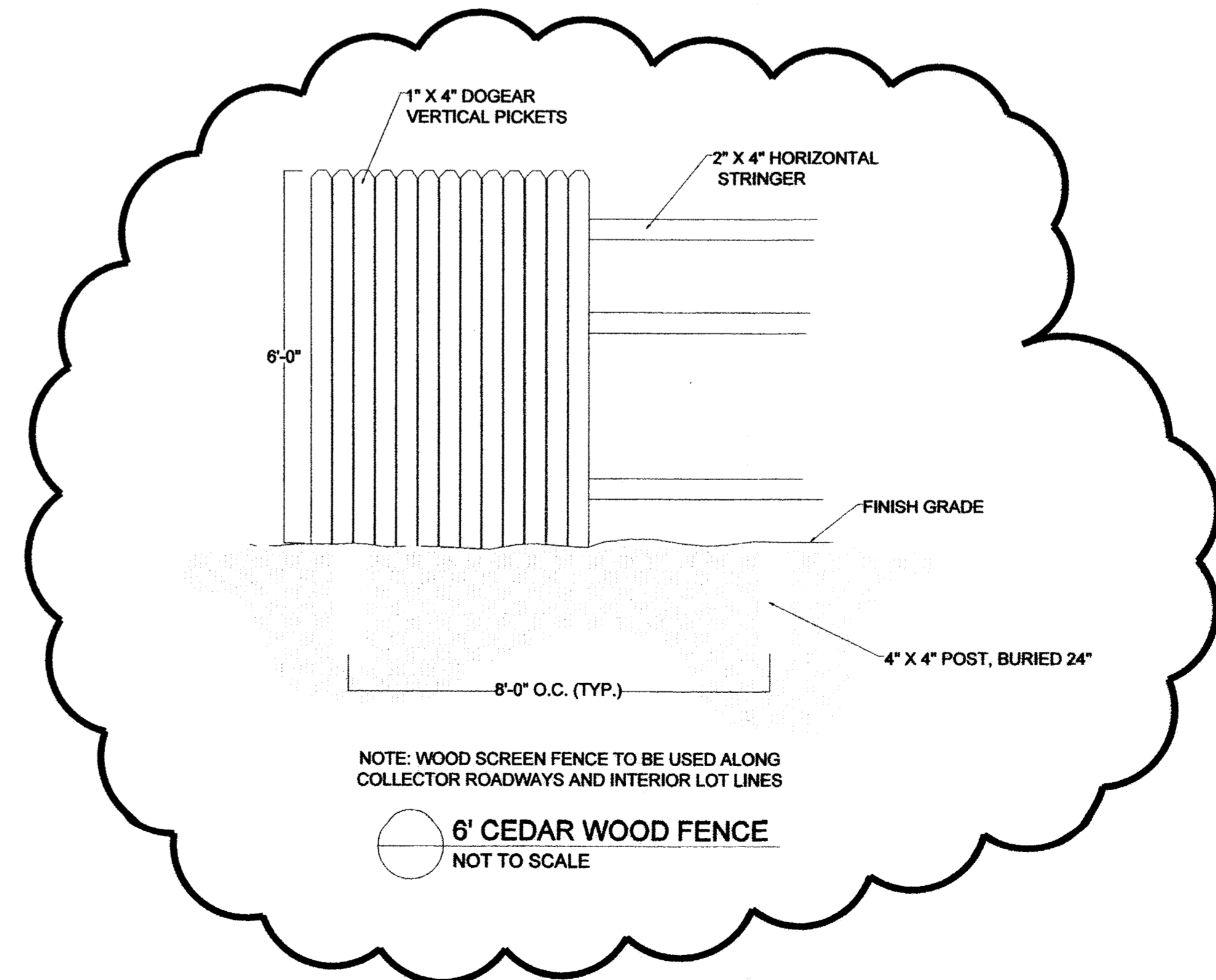
### CONCRETE FENCE DETAIL

NTS



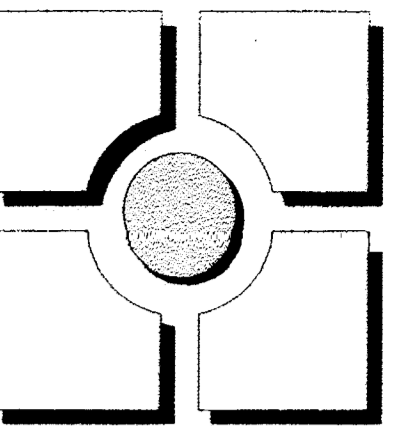
CONCRETE FENCE SECTION ALONG MARKSHEFFEL RD.

NTS



218066386  
6-11-18

DSD FILE NO.: PUDSP-16-002

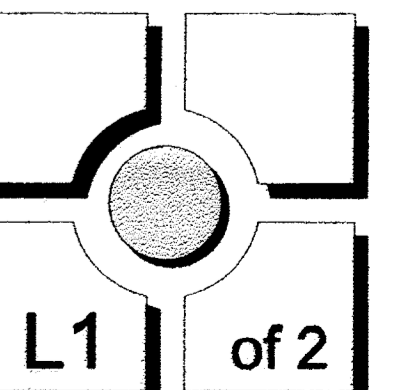


**THOMAS THOMAS**  
Planning Design  
Urban Design  
Landscape Architecture  
702 North Tejon  
Colorado Springs, Colorado 80903  
(719) 518-8777

REV #	REVISIONS	DATE	DRAWN	CHECKED	APPROVED
1					
2					
3					
4					
5					
6					

DESIGNED	JRA	05.21.18
DRAWN	JRA <td>05.21.18</td>	05.21.18
CHECKED	LMT <td>05.21.18</td>	05.21.18
PROJECT NUMBER:		2816.11
SCALE:		AS NOTED

**Lorson Ranch**  
Carriage Meadows South  
Colorado Springs, CO  
MINOR AMENDMENT  
PUD & PRELIMINARY PLAN



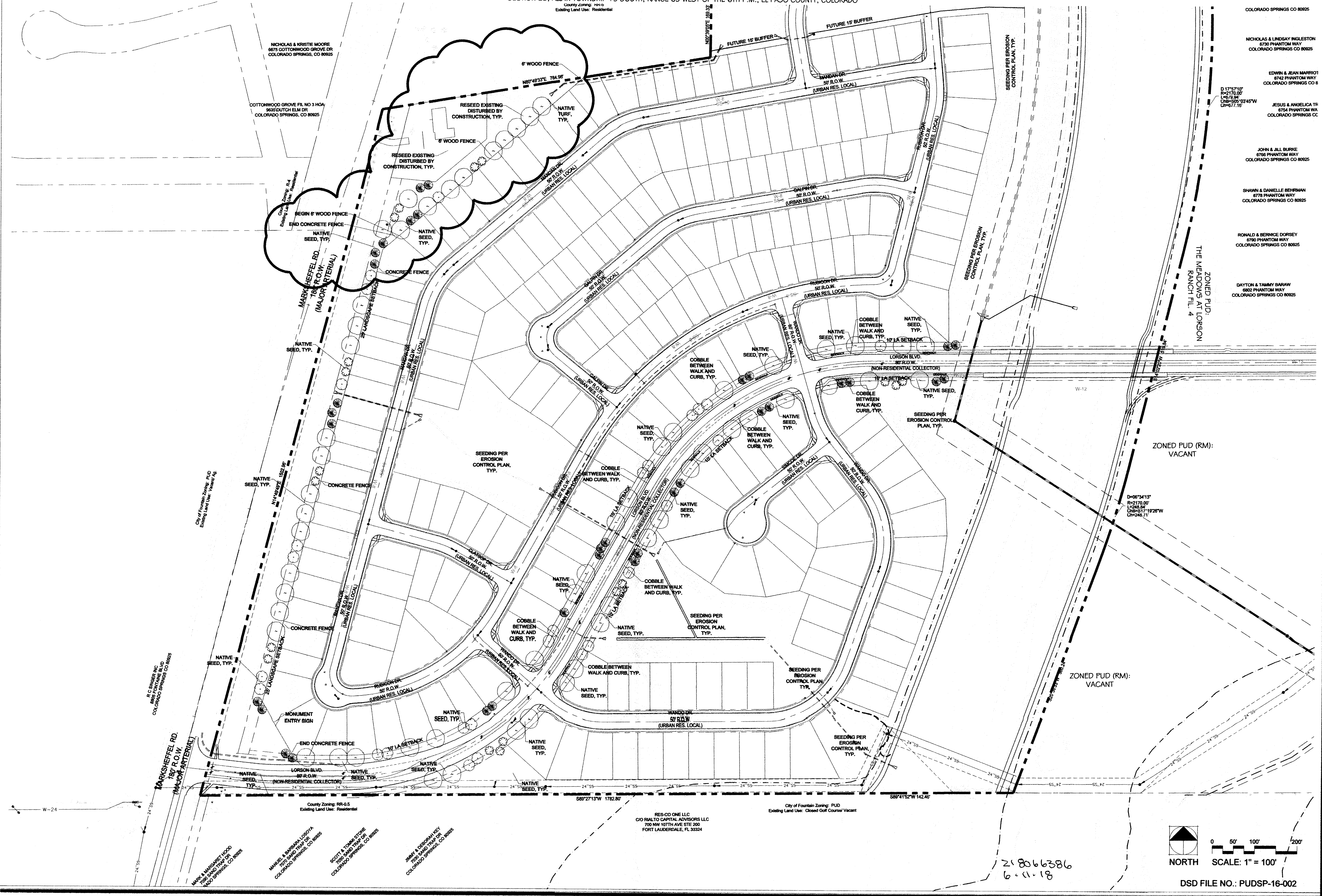
L1 of 2

# LORSON RANCH

## Carriage Meadows South PUD Development & Preliminary Plan Minor Amendment

A TRACT OF LAND LOCATED IN A PORTION OF THE NORTHEAST ONE-QUARTER (NE 1/4) OF SECTION 22 AND A PORTION OF THE NORTHWEST ONE-QUARTER (NW 1/4) OF SECTION 23, ALL IN TOWNSHIP 15 SOUTH, RANGE 65 WEST OF THE 6TH P.M., EL PASO COUNTY, COLORADO

County Zoning: RR-0.5  
Existing Land Use: Residential



**THOMAS THOMAS**  
Planning  
Urban Design  
Landscape Architecture  
702 North Tejon  
Colorado (719) 578-8777

REV #	REVISIONS	DATE	DRAWN	CHECKED	APPROVED
1					
2					
3					
4					
5					
6					

DESIGNED	JRA	05.21.18
DRAWN	JRA	05.21.18
CHECKED	LMT	05.21.18
PROJECT NUMBER:	2816.11	
SCALE:	AS NOTED	

**Lorson Ranch**  
Carriage Meadows South  
Colorado Springs, CO  
MINOR AMENDMENT  
PUD & PRELIMINARY PLAN

NORTH  
SCALE: 1" = 100'  
DSD FILE NO.: PUDSP-16-002

28066386  
6-11-18