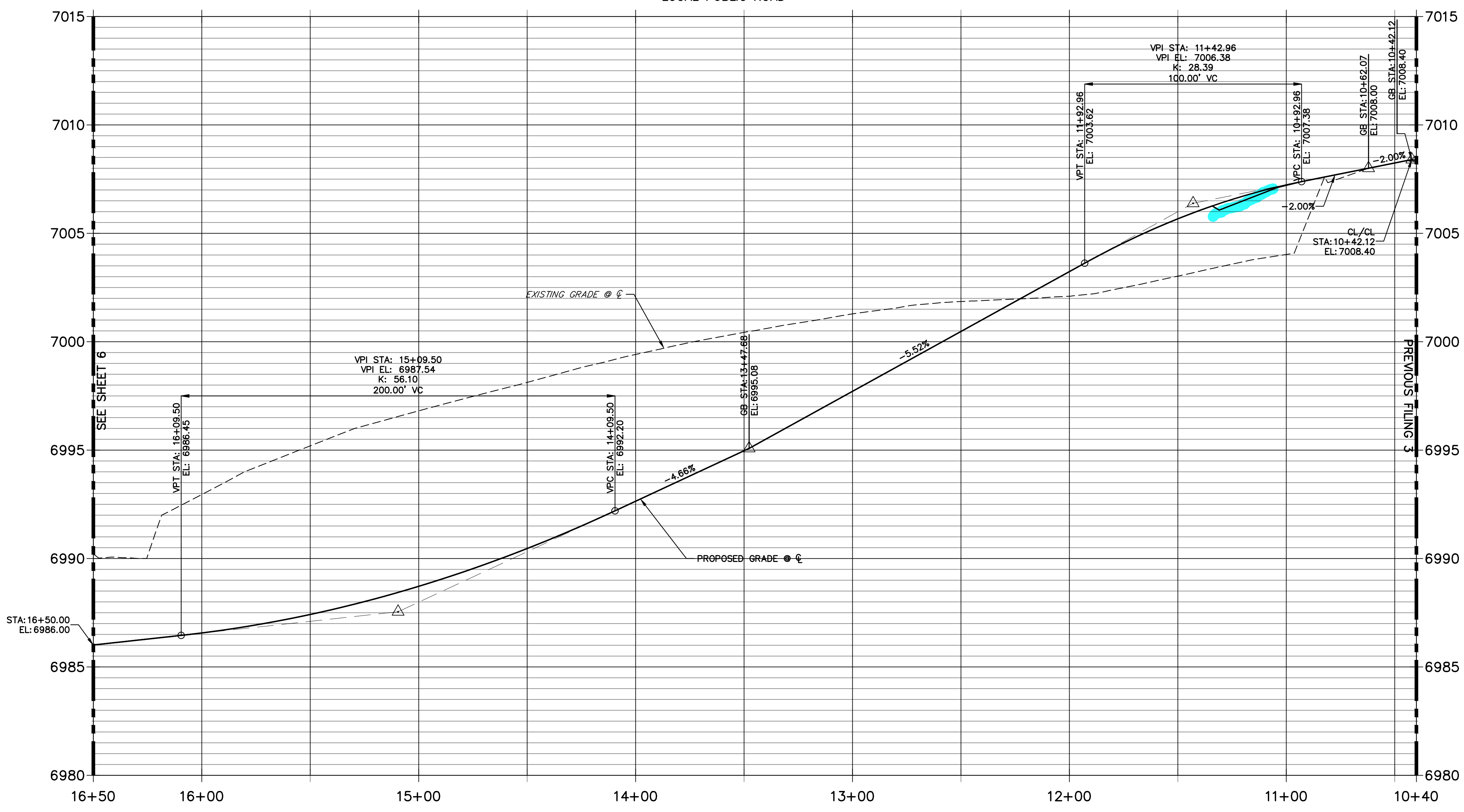


POINT TABULATION					
POINT NUMBER	STATION	OFFSET	ALIGNMENT	ELEVATION	DESCRIPTION
1	10+73.52	19.36' (RT)	PENNYDALE-MOORE	7008.38	HC RAMP MID PT
2	10+73.52	19.36' (LT)	PENNYDALE-MOORE	7007.50	HC RAMP MID PT
3	10+84.12	17.00' (RT)	PENNYDALE-MOORE	7008.16	PCR
4	10+84.12	17.00' (LT)	PENNYDALE-MOORE	7007.44	PCR
5	10+94.12	17.00' (RT)	PENNYDALE-MOORE	7007.86	CURB TRANSITION
6	11+04.12	16.17' (RT)	PENNYDALE-MOORE	7007.35	CURB TRANSITION
7	11+67.12	17.00' (LT)	PENNYDALE-MOORE	7004.47	CURB TRANSITION
8	11+77.12	16.17' (LT)	PENNYDALE-MOORE	7004.06	CURB TRANSITION
9	14+54.81	16.17' (LT)	PENNYDALE-MOORE	6989.88	PC
10	14+54.81	16.17' (RT)	PENNYDALE-MOORE	6989.88	PC

**PENNYDALE DRIVE**  
**STA 10+40.00 TO 16+50.00**  
 LOCAL PUBLIC ROAD



HORIZONTAL SCALE: 1" = 30'  
 ORIGINAL SCALE: 1" = 3'  
 VERTICAL SCALE: 1" = 3'  
 ORIGINAL SCALE: 1" = 3'

**ENGINEER'S STATEMENT**  
 PREPARED UNDER MY DIRECT SUPERVISION AND ON BEHALF OF JR ENGINEERING

MIKE A. BRAMLETT, P.E.  
 COLORADO P.E. 32314  
 FOR AND ON BEHALF OF JR ENGINEERING, INC.

UNTIL SUCH TIME AS THESE DRAWINGS ARE APPROVED BY THE APPROPRIATE REVIEWING AGENCIES, JR ENGINEERING APPROVES THEIR USES DESIGNATED BY WRITTEN AUTHORIZATION.

PREPARED FOR  
**SR LAND, LLC**  
 20 BOULDER CRESCENT  
 SUITE 200  
 COLORADO SPRINGS, CO 80903  
 JAMES F. MORLEY  
 (719) 471-1742

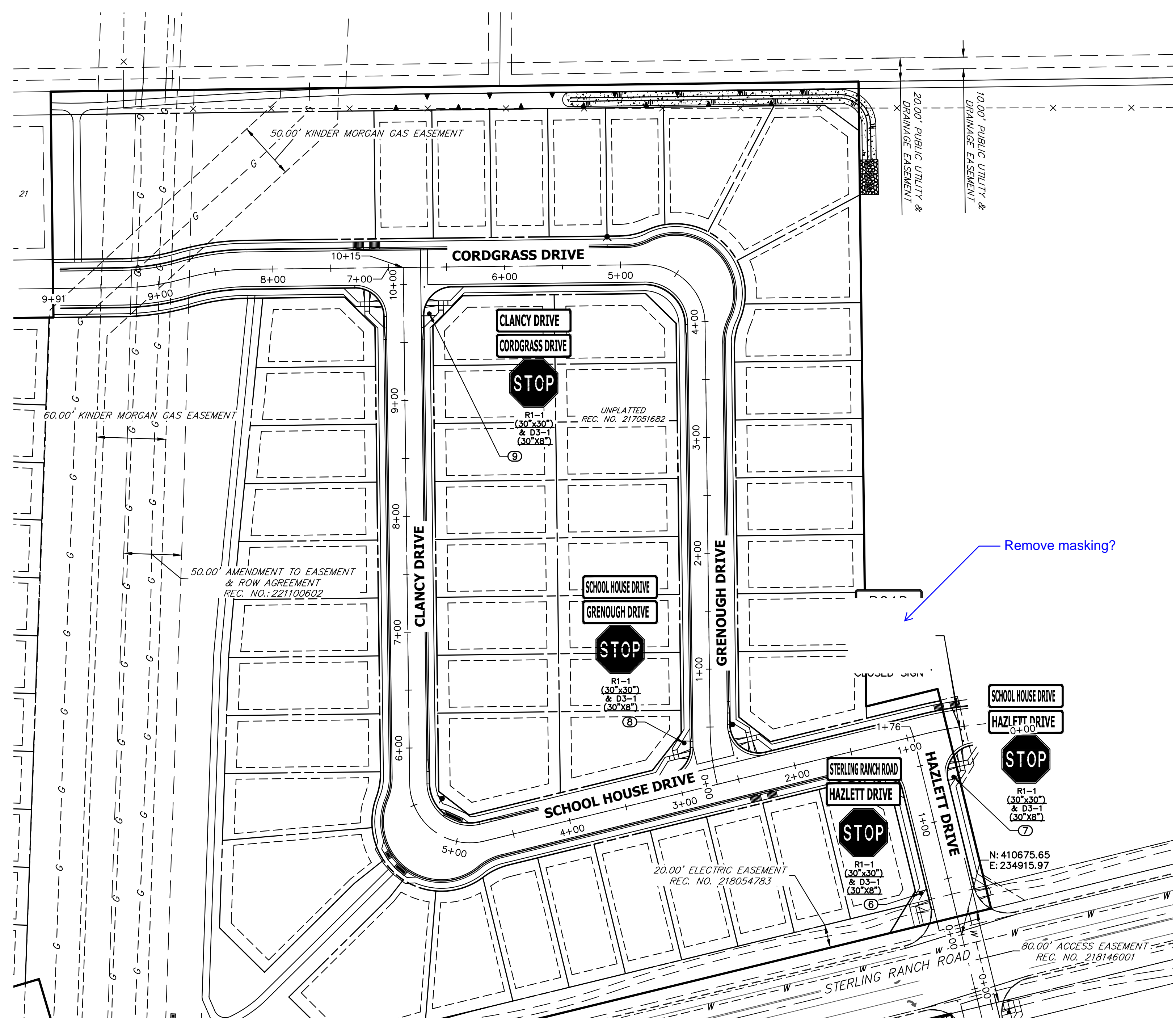
**J.R. ENGINEERING**  
 A Westman Company  
 Centennial 303-740-9888 • Colorado Springs 719-583-2583  
 Fort Collins 970-491-9888 • www.jrengineering.com

BY	DATE	No.	REVISION

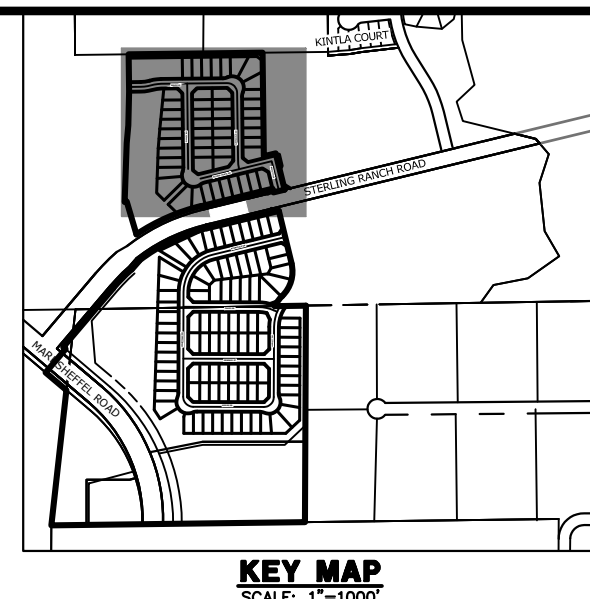
H-SCALE 1"=30'  
 V-SCALE 1"=3'  
 DATE 08/14/23  
 DESIGNED BY XXX  
 DRAWN BY WKN  
 CHECKED BY

**STERLING RANCH FILING 4**  
**STREET IMPROVEMENT PLAN**

SHEET 5 OF 25  
 JOB NO. 25188.11



POINT TABULATION				
POINT NUMBER	STATION	OFFSET	ALIGNMENT	DESCRIPTION
6	0+43.00	25.50' (LT)	HAZLETT DRIVE	STOP SIGN AND STREET SIGNS
7	1+34.00	25.50' (RT)	HAZLETT DRIVE	STOP SIGN AND STREET SIGNS
8	0+37.56	22.77' (LT)	GRENOUGH-ENNIS DR	STOP SIGN AND STREET SIGNS
9	9+74.66	22.07' (RT)	CLANCY- SCHOOLHOUSE DRIVE	STOP SIGN AND STREET SIGNS



UNTIL SUCH TIME AS THESE DRAWINGS ARE APPROVED BY THE APPROPRIATE REVIEWING AGENCIES, JR ENGINEERING APPROVES THEIR USE. THESE DRAWINGS ARE DESIGNATED BY WRITTEN AUTHORIZATION.

PREPARED FOR  
**SR LAND, LLC**  
 20 BOULDER CRESCENT  
 SUITE 200  
 COLORADO SPRINGS, CO 80903  
 JAMES F. MORLEY  
 (719) 471-1742

**J.R. ENGINEERING**  
 A Westman Company  
 Centennial 303-740-9888 • Colorado Springs 719-583-2583  
 Fort Collins 970-491-9888 • www.jrengineering.com

BY	DATE

No.	REVISION

H-SCALE	1"=60'
V-SCALE	N/A
DATE	08/14/23
DESIGNED BY	XXX
DRAWN BY	WKN
CHECKED BY	

Remove masking?

ORIGINAL SCALE: 1" = 60'

**ENGINEER'S STATEMENT**  
 PREPARED UNDER MY DIRECT SUPERVISION AND ON BEHALF OF JR ENGINEERING  
 MIKE A. BRAMLETT, P.E.  
 COLORADO P.E. 32314  
 FOR AND ON BEHALF OF JR ENGINEERING

