

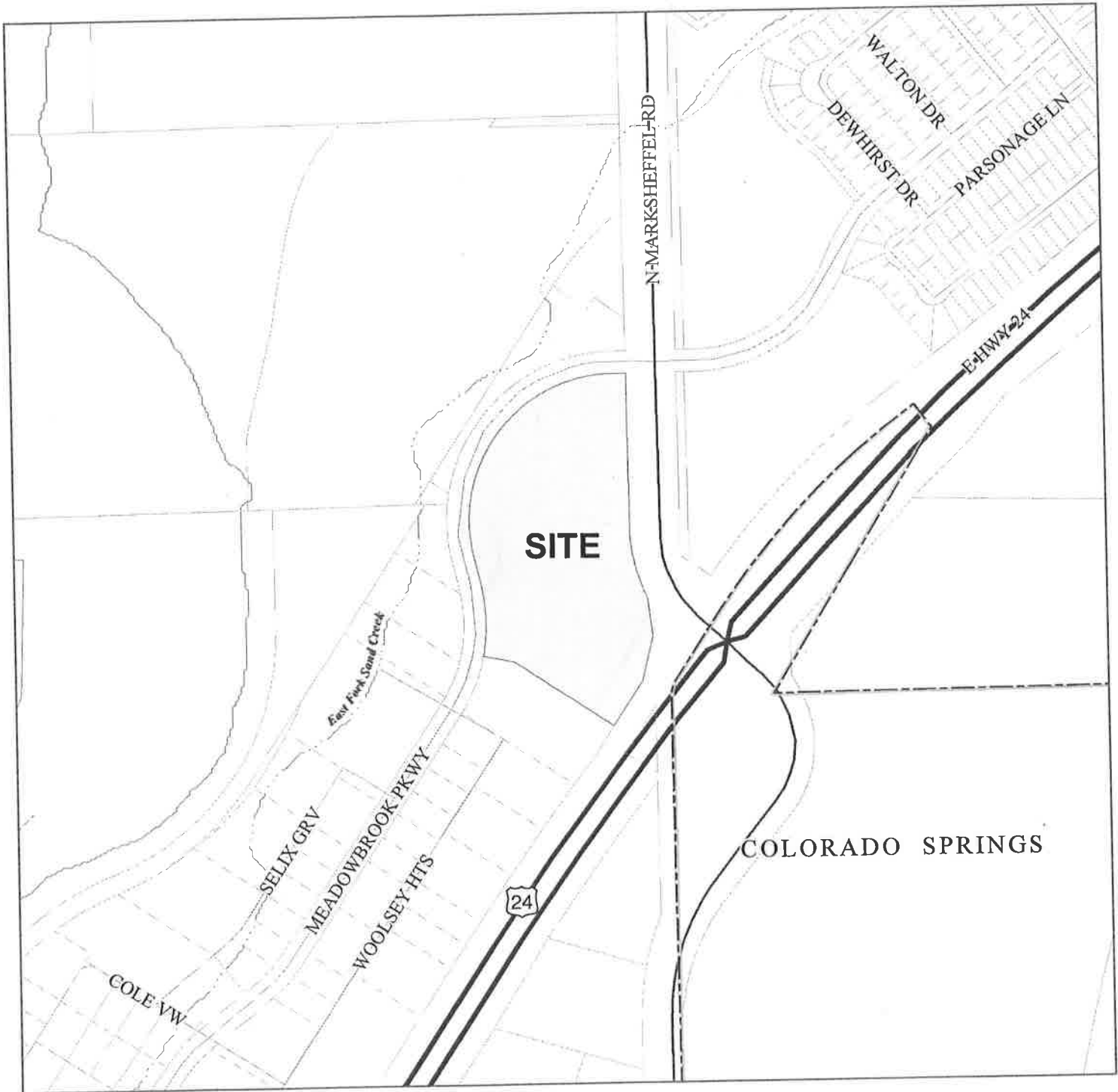
El Paso County Parcel Information

PARCEL	NAME
5405412001	STARR NANCY BARBER
5405412003	STARR NANCY BARBER
5405412002	STARR NANCY BARBER
5408101053	CASE, L.G

File Name:

Zone Map No.:

Date:



Please report any parcel discrepancies to:
 El Paso County Assessor
 1675 W. Garden of the Gods Rd
 Colorado Springs, CO 80907
 (719) 520-6600



COPYRIGHT 2018 by the Board of County Commissioners, El Paso County, Colorado. All rights reserved. No part of this document or data contained herein may be reproduced, used to prepare derivative products, or distributed without the specific written approval of the Board of County Commissioners, El Paso County, Colorado. This document was prepared from the best data available at the time of printing. El Paso County, Colorado, makes no claim as to the completeness or accuracy of the data contained herein.

MEADOWBROOK
Upper \$200S
California Communities

California Communities
CONCRETE BY
SUNBELT CONCRETE
FOR PRICE & AVAILABILITY
CALL PRICING INC.
800-771-4300

12.03.2018 16:45

POSTING REQUIREMENTS

File Number: *SP-17-004*

Post by Date: *12/3/18*

Planner: *M. Ruing*

Posting Location – See Vicinity Map

Posted by: (Circle One) Mindy Michael Joe Drew

Date Posted: *12/3/18*

Return to Planner indicated above after posting of site.