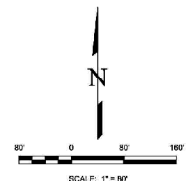
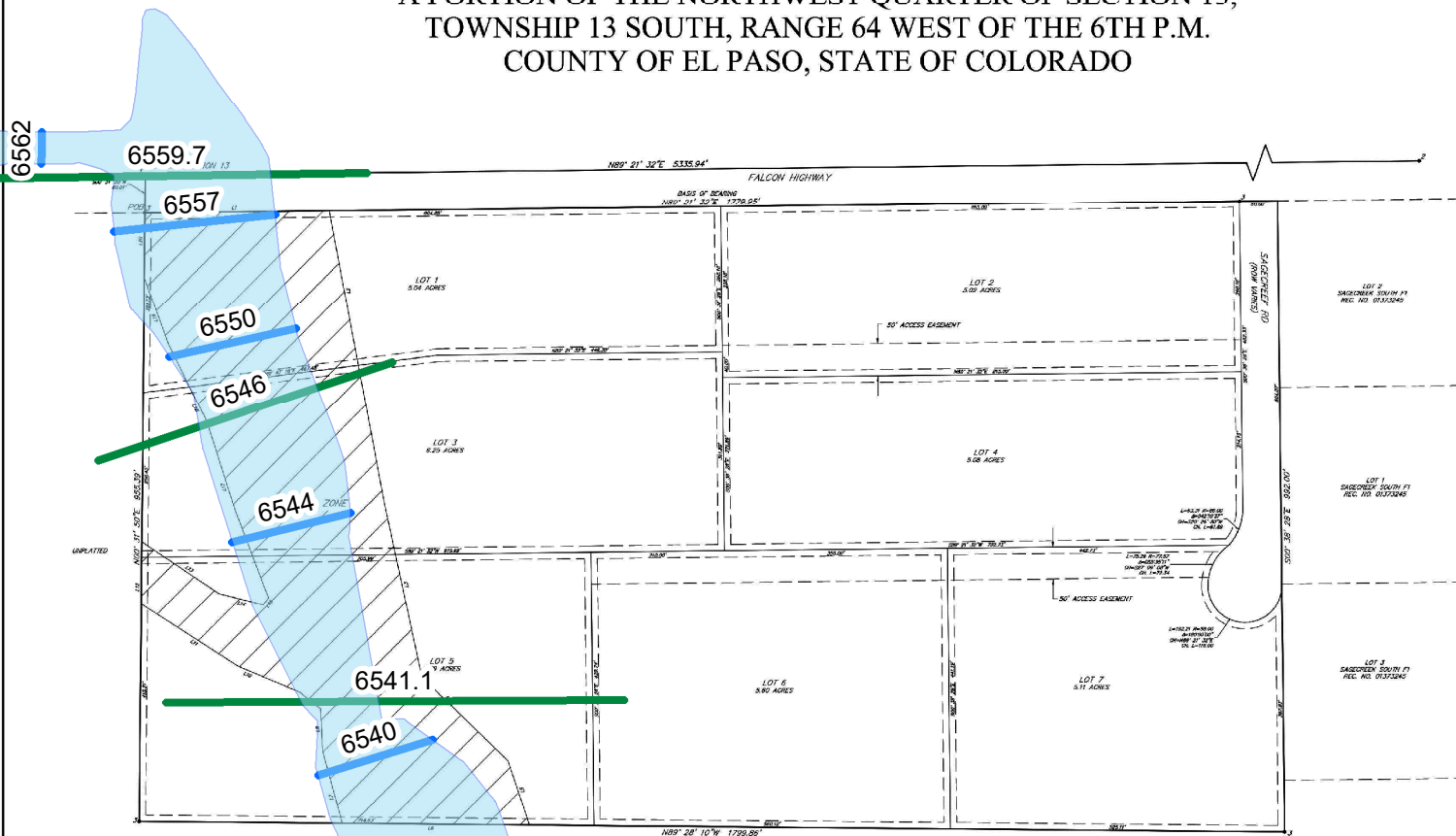


PEERLESS SUBDIVISION

FINAL PLAT

A PORTION OF THE NORTHWEST QUARTER OF SECTION 13,
TOWNSHIP 13 SOUTH, RANGE 64 WEST OF THE 6TH P.M.
COUNTY OF EL PASO, STATE OF COLORADO



Line #	Direction	Length	Line #	Direction	Length
01	N89° 21' 32" E	5335.94'	01	N89° 21' 32" E	5335.94'
02	S70° 14' 27" E	162.00'	02	S70° 14' 27" E	162.00'
03	S70° 14' 27" E	162.00'	03	S70° 14' 27" E	162.00'
04	S45° 47' 02" E	153.83'	04	S45° 47' 02" E	153.83'
05	S70° 14' 27" E	162.00'	05	S70° 14' 27" E	162.00'
06	N89° 20' 10" W	1729.85'	06	N89° 20' 10" W	1729.85'
07	N15° 08' 50" W	117.73'	07	N15° 08' 50" W	117.73'
08	N89° 00' 50" W	180.53'	08	N89° 00' 50" W	180.53'
09	N89° 04' 27" W	42.33'	09	N89° 04' 27" W	42.33'
10	N89° 11' 42" W	105.44'	10	N89° 11' 42" W	105.44'
11	N89° 21' 32" E	5335.94'	11	N89° 21' 32" E	5335.94'

- SURVEY MONUMENTATION**
- FOUND NW CORNER OF SECTION 13
2 5" ALUMINUM CAP IN RANGE BOX PLS 30130
 - FOUND NE CORNER OF SECTION 13
2 5" ALUMINUM CAP, PLS 9648
 - FOUND FLEBAR WITH YELLOW CAP, PLS 7338



2 OF 2	PLAT	MM
	PREPARED BY	SLM
	DATE	07/28/23
	PROJECT	201929

LIMITS
 T
 DAM
 THE
 E
 90
 W. u dig.
 C2

Kimley Horn
 DESIGNED DRAWN BY CHECKED DATE, 08/23
 PEERLESS FARMS
 EL PASO COUNTY, COLORADO
 PROJECT
 19911
 DRAWING
 CD_6