

FINAL PLAT STIMPLE SUBDIVISION FILING NO. 1

Check line bearings and lengths with closure sheet, title commitment

LEGEND

- AC ACRES
- SQ. FT. SQUARE FEET
- (xxxx) ADDRESS
- 1-1/2" ALUMINUM SURVEYORS CAP STAMPED "PLS 34977"
- FOUND MONUMENT AS NOTED UNDER MONUMENT LEGEND
- +0.1 Ⓢ MONUMENT LEGEND IDENTIFICATION WITH INDICATION OF MONUMENTS HEIGHT ABOVE OR BELOW EXISTING GRADE
- ✠ SECTION CORNER RECOVERED, AS NOTED

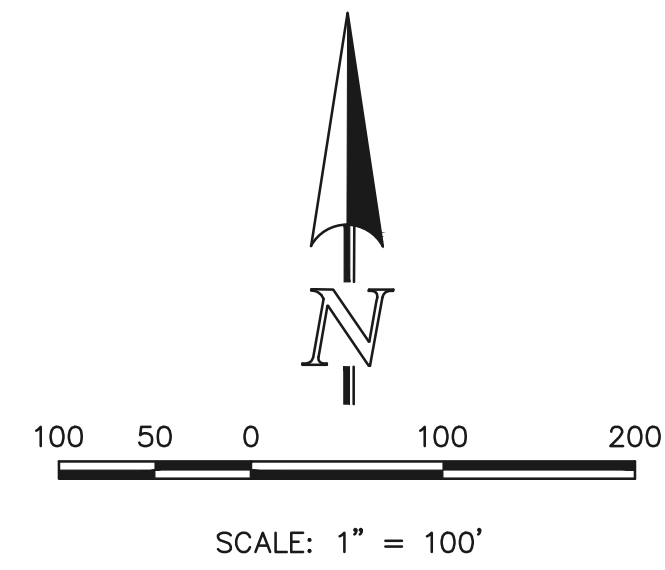
MONUMENT LEGEND

- A. INDICATES REFERENCE TO A FOUND NUMBER 5 REBAR WITH A 1-1/4 INCH PLASTIC CAP STAMPED "EDWARD JAMES PLS 37909". NO PUBLIC RECORD FOUND DOCUMENTING THE PLACEMENT OF THIS MONUMENT.
- B. INDICATES REFERENCE TO A FOUND NUMBER 5 REBAR WITH A 1-1/2 INCH ALUMINUM CAP STAMPED "EPCDPWP LS 38701", PER BLACK FOREST TRAILS ASSOCIATION, INC. SUBDIVISION EXEMPTION PLAT RECORDED AUGUST 15, 2023 UNDER RECEPTION NUMBER 223715180.
- C. INDICATES REFERENCE TO A FOUND NUMBER 5 REBAR WITH A 1-1/4 INCH ORANGE PLASTIC CAP STAMPED "M&S CIVIL PLS 32820" PER AN ALTA/NSPS LAND TITLE SURVEY DEPOSITED FOR RECORDED ON APRIL 10, 2017 UNDER RECEPTION NUMBER 217900058.

Remove

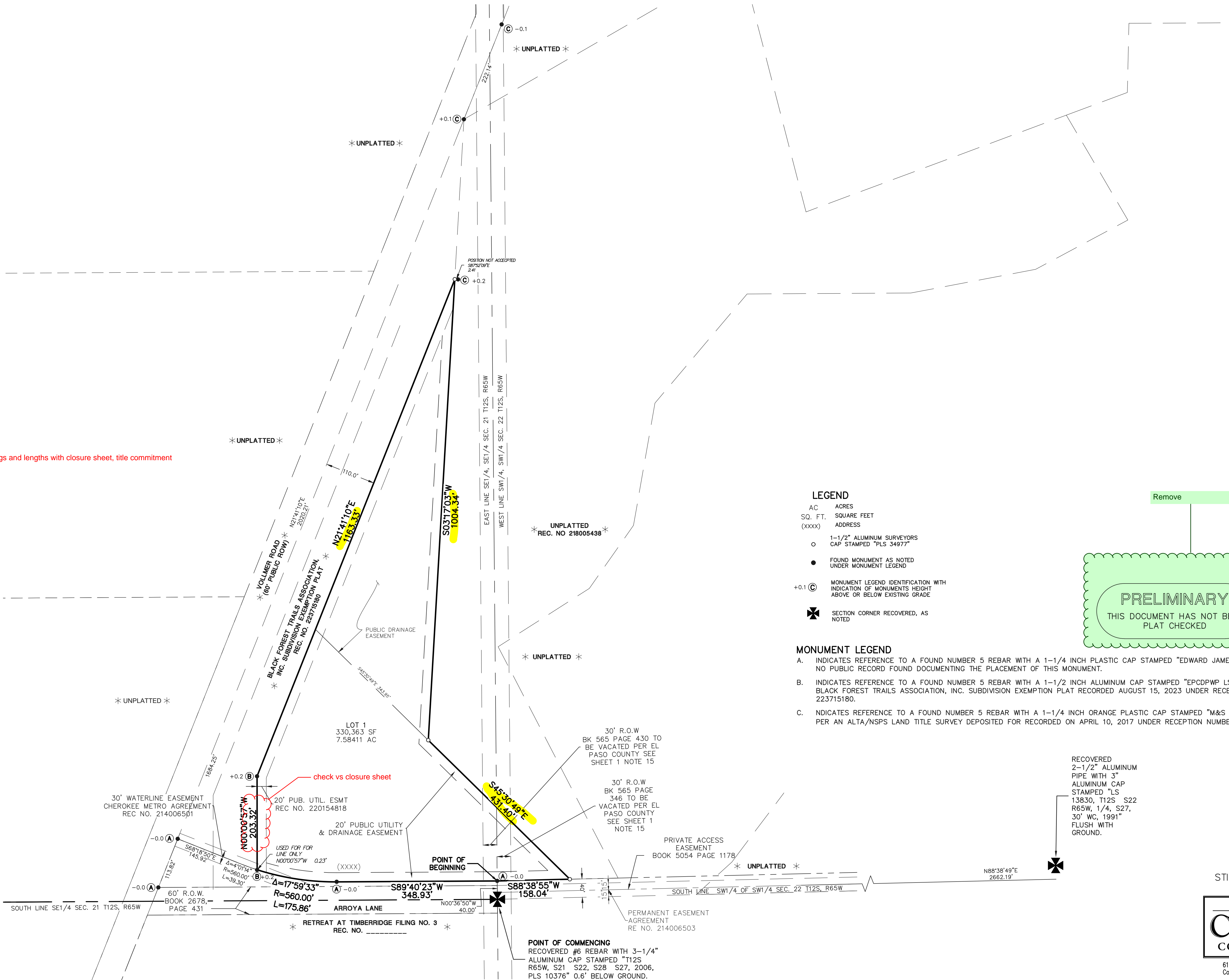
PRELIMINARY

THIS DOCUMENT HAS NOT BEEN PLAT CHECKED



RECOVERED #6 REBAR WITH 3-1/4" ALUMINUM CAP STAMPED "OLIVER E. WATTS, DO NOT DISTURB, E. 1/16, S21, S28, 2010, SURVEY MARK, PE-LS 9853" FLUSH WITH GROUND.

BASIS OF BEARINGS
N89°40'23"E 1313.53'



RECOVERED 2-1/2" ALUMINUM PIPE WITH 3" ALUMINUM CAP STAMPED "LS 13830, T12S S22 R65W, 1/4, S27, 30" WC, 1991" FLUSH WITH GROUND.

SHEET 2 OF 2
AUGUST 16, 2024
JOB NO. 1185.80
STIMPLE SUBDIVISION
FILING NO. 1



619 N. Cascade Avenue, Suite 200
Colorado Springs, Colorado 80903
(719)785-0790

PCD File: MS244