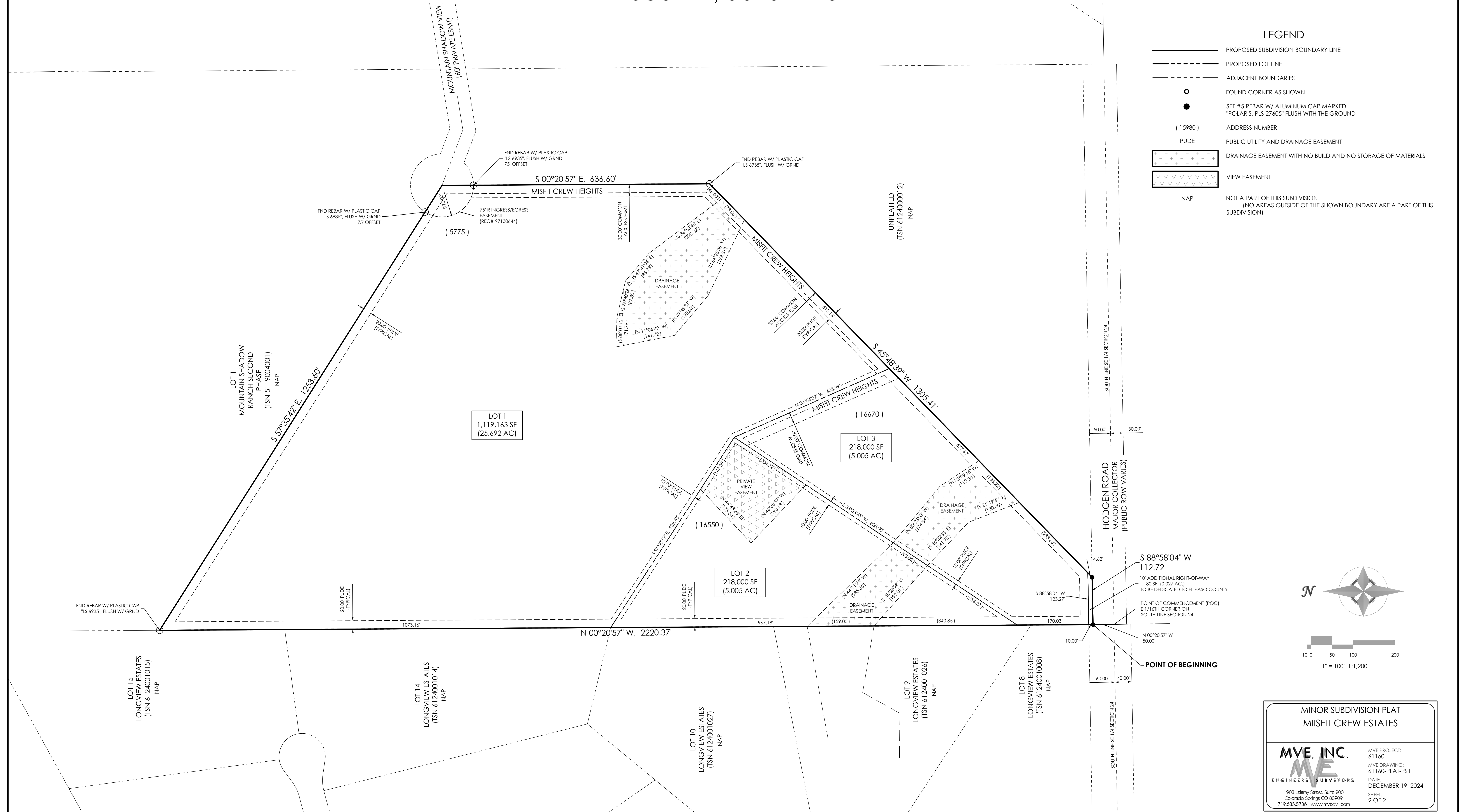
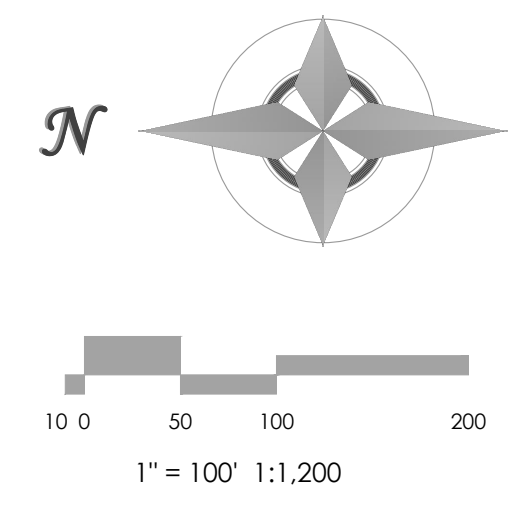


MISFIT CREW ESTATES

A TRACT OF LAND LOCATED IN THE EAST HALF OF THE SOUTHEAST QUARTER QUARTER OF SECTION 24, TOWNSHIP 11 SOUTH, RANGE 66 WEST of the 6th PRINCIPAL MERIDIAN, EL PASO COUNTY, COLORADO



LEGEND	
	PROPOSED SUBDIVISION BOUNDARY LINE
	PROPOSED LOT LINE
	ADJACENT BOUNDARIES
	FOUND CORNER AS SHOWN
	SET #5 REBAR W/ ALUMINUM CAP MARKED "POLARIS, PLS 27605" FLUSH WITH THE GROUND
(15980)	ADDRESS NUMBER
	PUDE PUBLIC UTILITY AND DRAINAGE EASEMENT
	DRAINAGE EASEMENT WITH NO BUILD AND NO STORAGE OF MATERIALS
	VIEW EASEMENT
NAP	NOT A PART OF THIS SUBDIVISION (NO AREAS OUTSIDE OF THE SHOWN BOUNDARY ARE A PART OF THIS SUBDIVISION)



MINOR SUBDIVISION PLAT
MISFIT CREW ESTATES

MVE, INC.
ENGINEERS SURVEYORS
1903 LeBarry Street, Suite 300
Colorado Springs, CO 80909
719.635.5736 www.mvecivil.com

MVE PROJECT: 61160
MVE DRAWING: 61160-PLAT-PS1
DATE: DECEMBER 19, 2024
SHEET: 2 OF 2